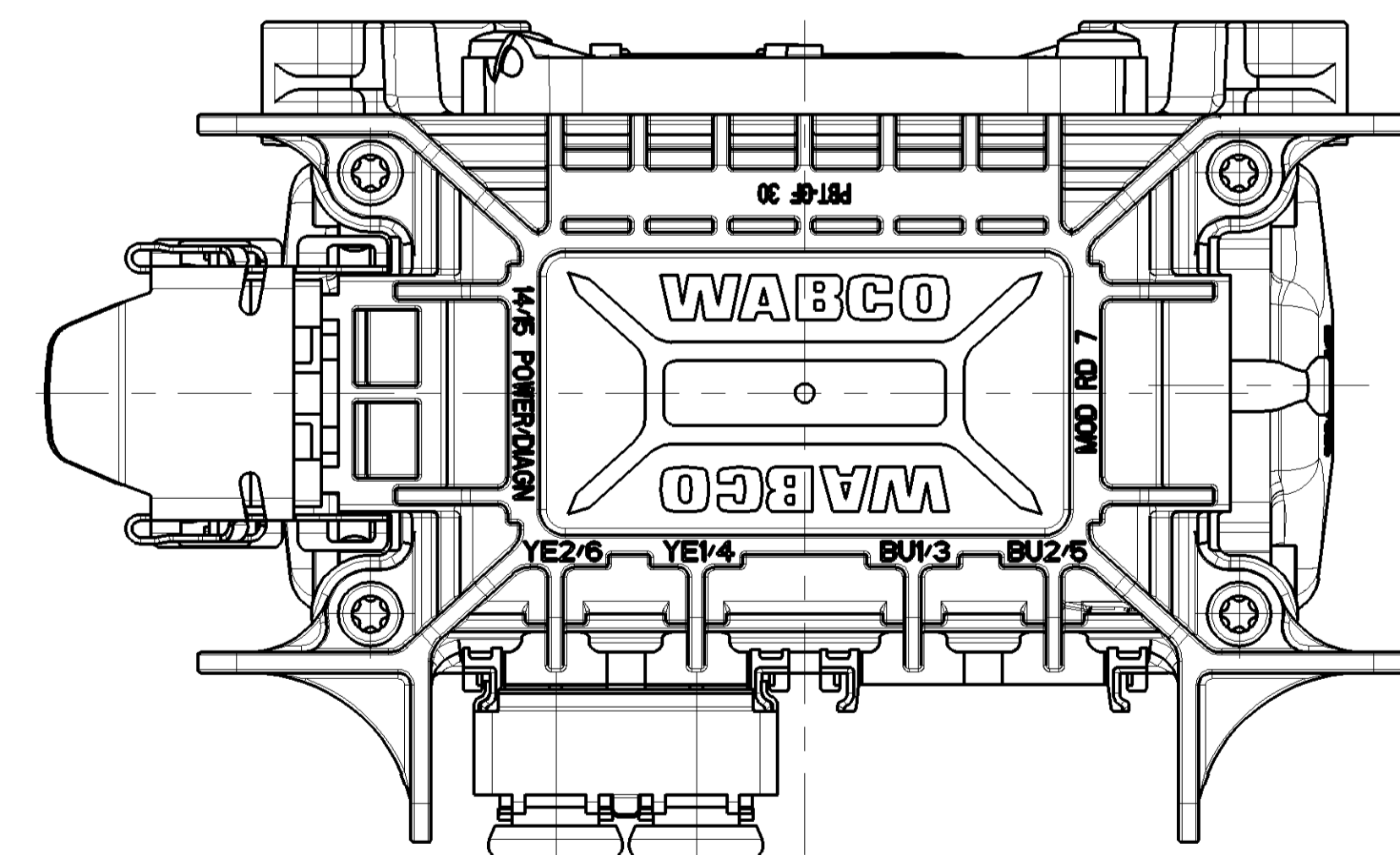
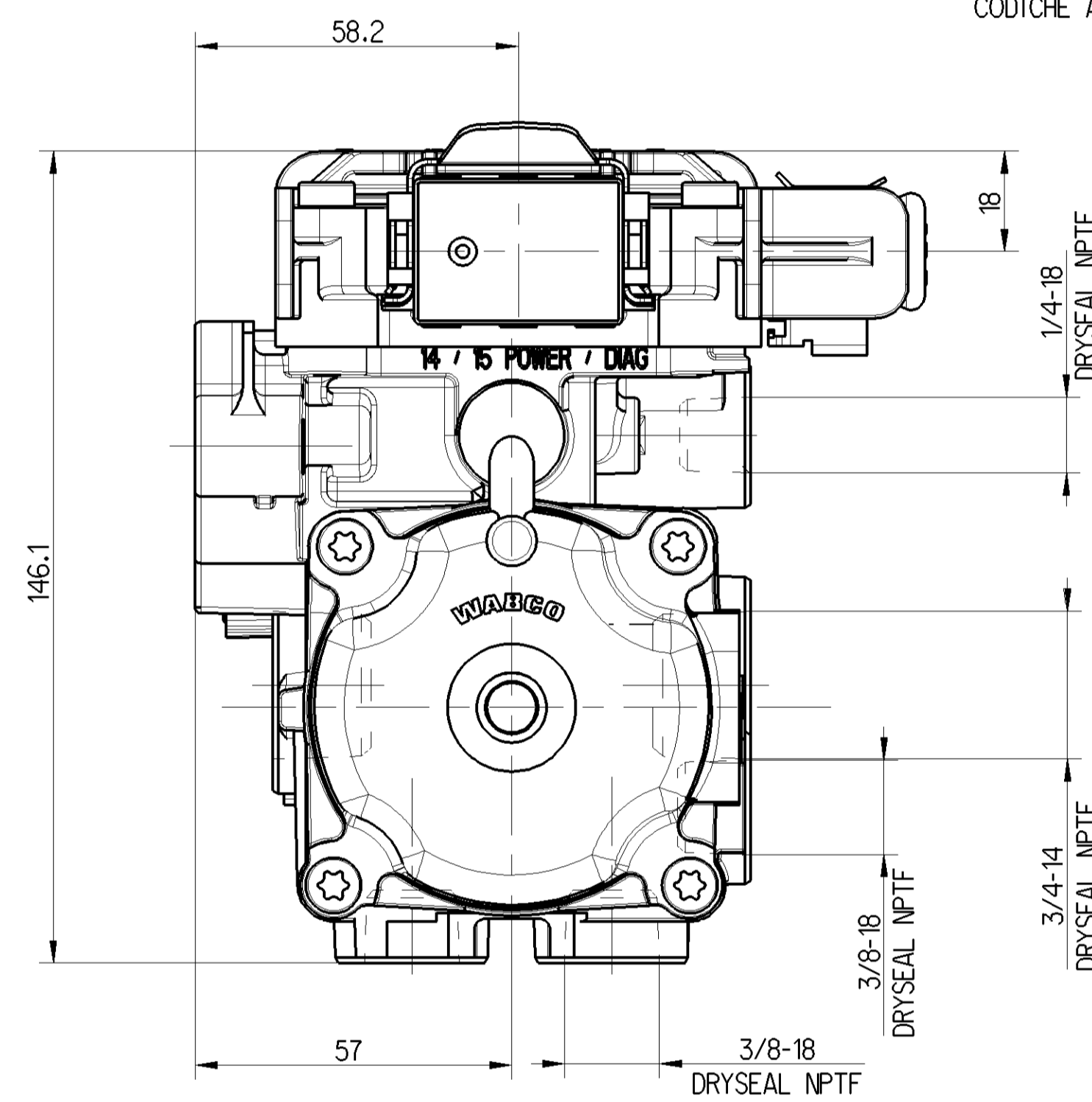
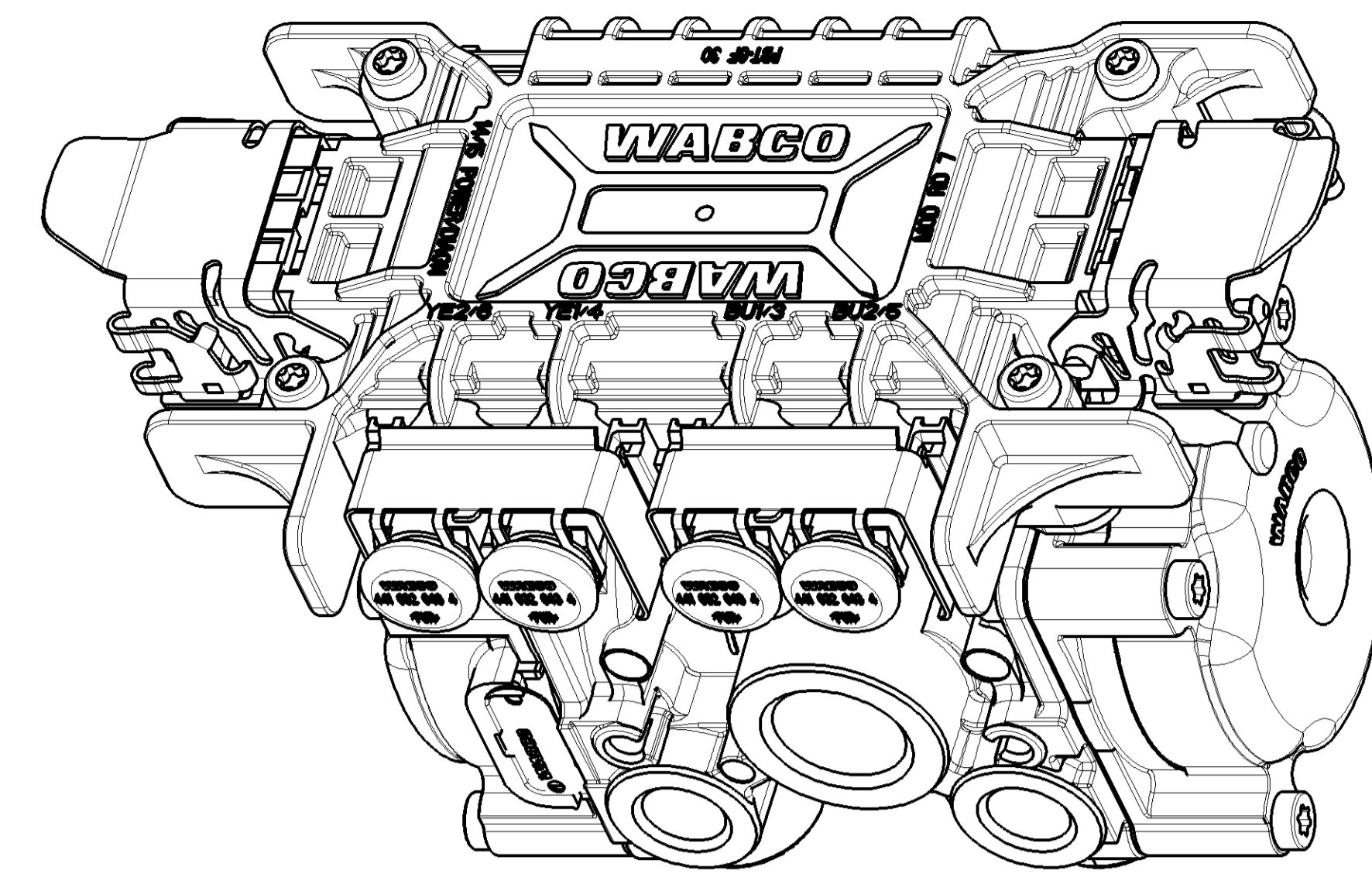


4S / 3M



2S / 2M



WORKING MEDIUM  
ARBEITSMEDIUM  
FLUIDE D'UTILISATION  
FLUIDO DI ESERCIZIO

AIR (CONTAINING WATER, OIL AND ALCOHOL)  
LUFT (WASSER, ÖL- UND ALKOHOLHALTIG)  
AIR (CHARGE D'EAU, D'HUILE ET D'ALCOOL)  
ARIA (CONTENENTE ACQUA, OLIO E ALCOOL)

WORKING PRESSURE  
BETRIEBSDRUCK  
PRESSION D'UTILISATION  
PRESSIONE DI ESERCIZIO

10 BAR

MAX. PERMISSIBLE WORKING PRESSURE  
MAX. ZULÄSSIGER BETRIEBSDRUCK  
PRESSION D'UTILISATION MAXI. ADMISSIBILE  
PRESSIONE DI ESERCIZIO MAX. AMMISSIBILE

11 BAR

MAX. PERMISSIBLE WORKING PRESSURE (SUPPLY)  
MAX. ZULÄSSIGER BETRIEBSDRUCK (VORRAT)  
PRESSION D'UTILISATION MAXI. ADMISSIBILE (ALIMENTATION)  
PRESSIONE DI ESERCIZIO MAX. AMMISSIBILE (ALIMENTAZIONE)

13 BAR

VOLTAGE  
SPANNUNG  
VOLTAGE  
VOLTAGGIO

12-13,5V DC

DEGREE OF PROTECTION ACCORDING TO IEC 60 529  
SCHUTZART NACH IEC 60 529  
DEGRE DE PROTECTION SUIVANT IEC 60 529  
GRADO DI PROTEZIONE SECONDO IEC 60 529

COMPLETE DEVICE WITH MOUNTED PLUG  
KOMPLETTES GERÄT MIT MONTIERTEM STECKER  
APPAREIL COMPLET AVEC L'FICHE MONTE  
APPARECCHIO COMPLETO CON SPINA TO MONTATO

IP66

MAX. DEVIATION OF THE DEVICE FROM THE VERTICAL  
MAX. ABWEICHUNG DES GERÄTES VON DER SENKRECHTEN  
ECART MAX. DE L'APPAREIL PAR RAPPORT A LA VERTICALE  
DEVIATIONE MAX. DELL'APPARECCHIO RIFERITO ALLA VERTICALE

±15°

THERMAL RANGE OF APPLICATION  
THERMISCHER ANWENDUNGSBEREICH  
GAMME D'UTILISATION THERMIQUE  
TEMPERATURA DI ESERCIZIO

-40°C ..... +65°C

-40°F ..... +149°F

SHORT-TIME RESISTANCE TO HEAT  
KURZZEITIGE WÄRMEBESTÄNDIGKEIT  
RESISTANCE THERMIQUE TEMPORAIRE  
RESISTANZA TERMICA PER BREVE PERIODO

110°C (1h)

230°F (1h)

FURTHER TECHNICAL DATA SEE PRODUCT SPECIFICATION, DOCUMENT NO. 1  
WEITERE TECHNISCHE DATEN SIEHE PRODUKT SPEZIFIKATION  
POUR AUTRES DONNÉES TECHNIQUES VOIR SPECIFICATION DU PRODUIT  
PER ULTERIORI DATI TECNICI VEDERE SPECIFICA DI PRODOTTO

1

LAYING OF THE CABLES ACCORDING TO INSTALLATION INSTRUCTION;  
VERLEGUNG DER ELEKTRISCHEN LEITUNGEN GEMÄSS INSTALLATIONSVORSCHRIFT;  
POSER LES CABLES SUIVANT L'INDICATION POUR L'INSTALLATION;  
POSARE I CAVI SECONDO INDICAZIONE DI MONTAGGIO;

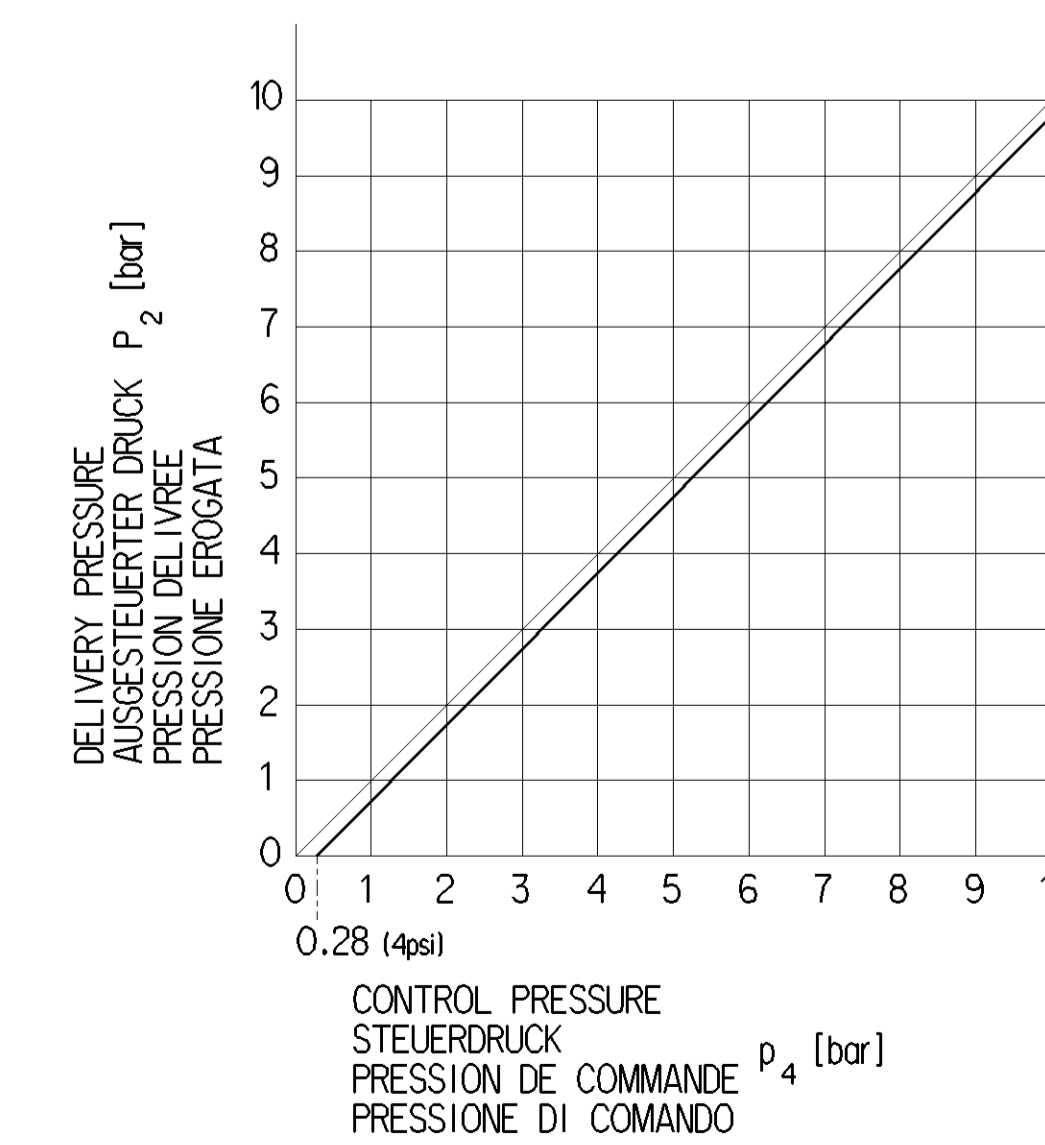
449 000 000 0

DOC-CODE 611

BLANK NAME PLATE  
BEZEICHENUNGSSCHILD NICHT BEDRUCKT  
PLAQUE DE FİRME N'EST PAS IMPRİMÉE  
TARGHETTA NON STAMPATO

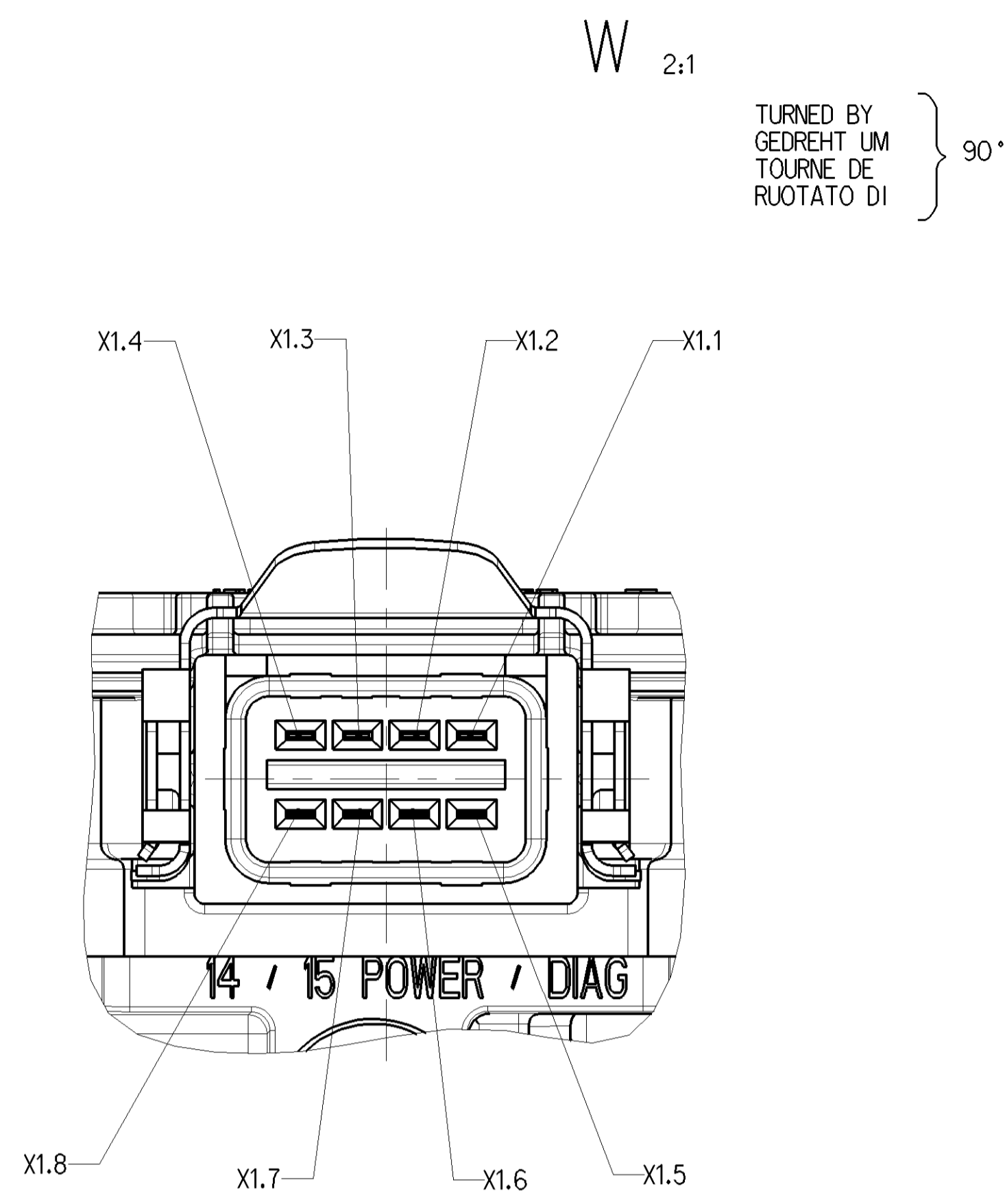
MARKED AREA FREE FROM PAINT  
MARKIERTER BEREICH FREI VON FARBE  
PARTIE MARQUÉE SANS PEINTURE  
PARTE SEGNATA SENZA VERNICE

IDENTIFICATION BENENNUNG DENOMINATION DENOMINAZIONE	MAX. SYSTEM MAX. SYSTEME MAX. SISTEMA	1	WEIGHT GEWICHT POIDS PESO
400 500 102 0	2S / 2M	400 500 100 0 DOC. CODE 435 400 500 109 0 DOC. CODE 435	2.226
400 500 103 0	4S / 3M	400 500 100 0 DOC. CODE 435 400 500 109 0 DOC. CODE 435	2.296
400 500 105 0	4S / 3M PLUS	400 500 100 0 DOC. CODE 435 400 500 109 0 DOC. CODE 435	2.336

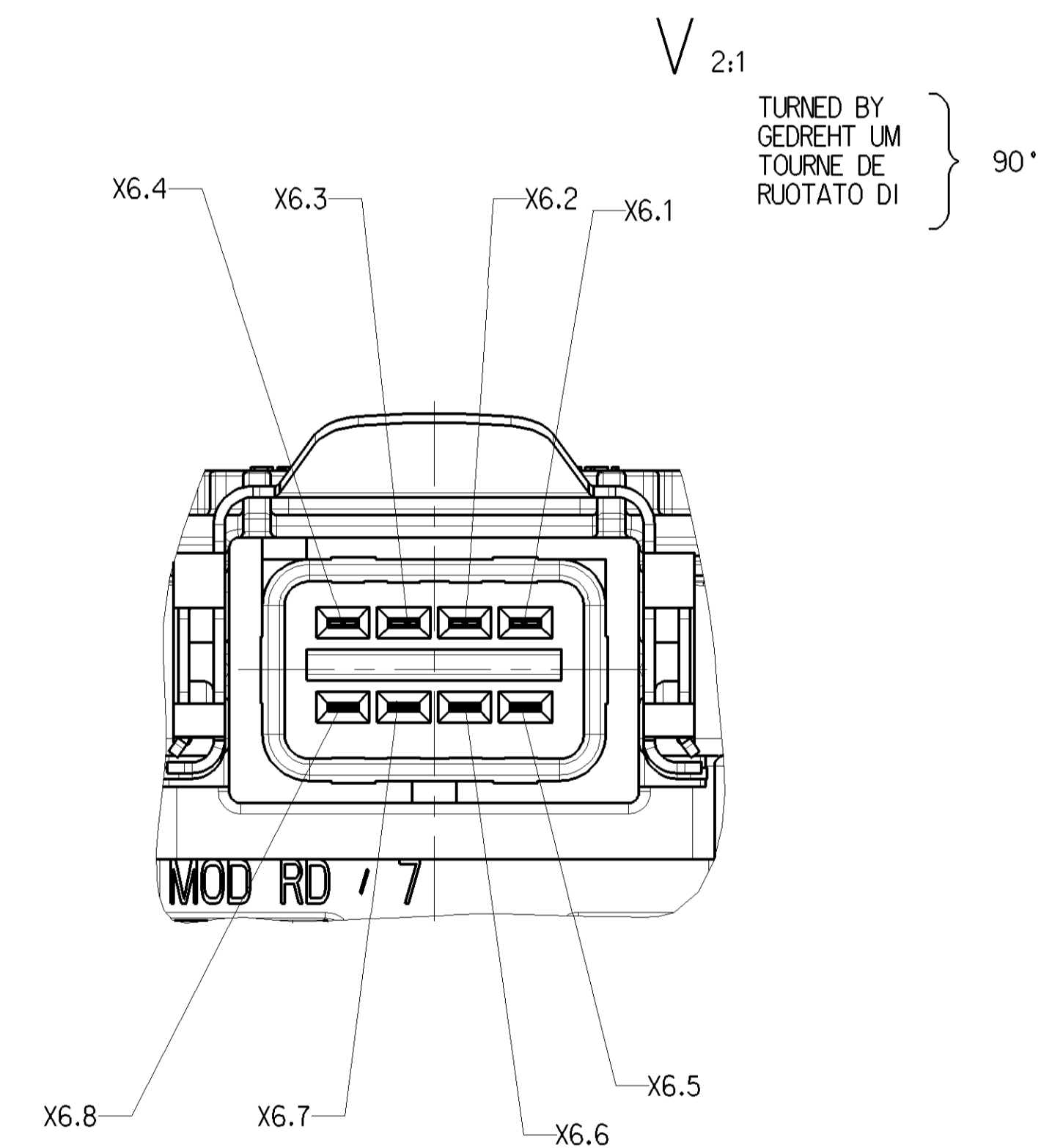
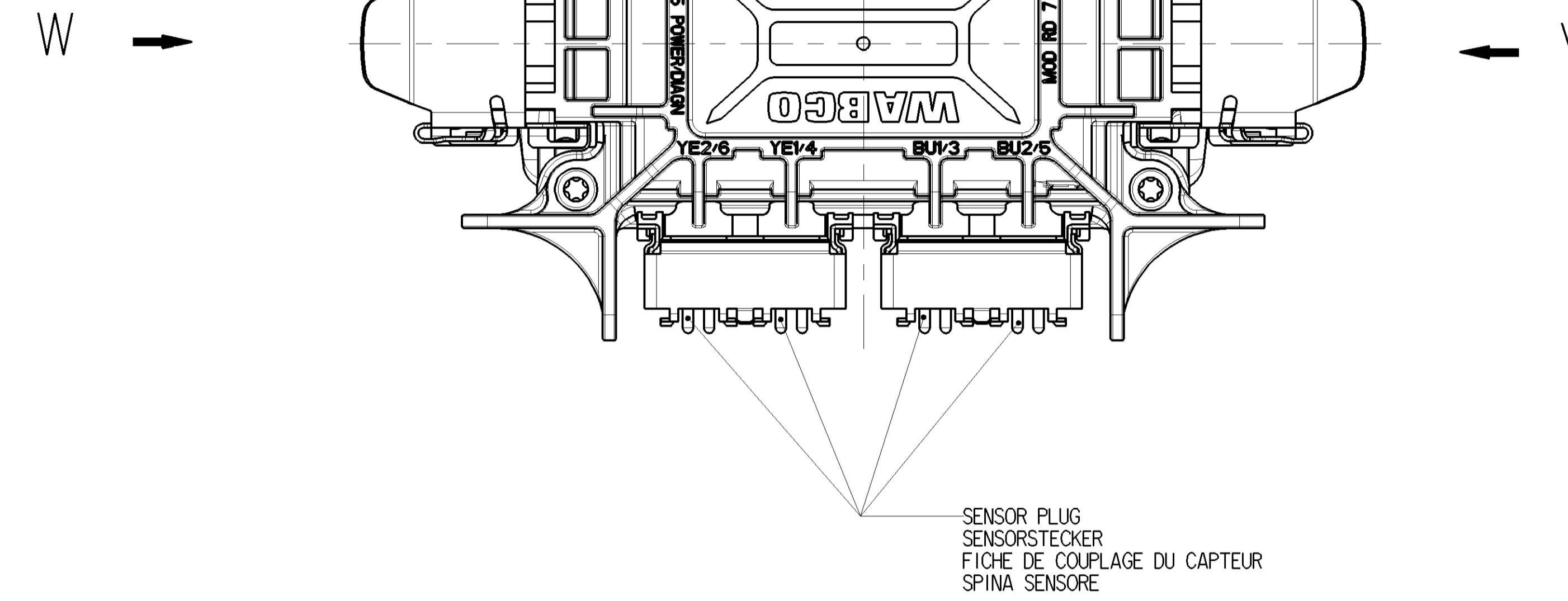


- 1 SUPPLY OF ENERGY  
ENERGIEZUFLOSS  
ALIMENTATION  
ALIMENTAZIONE
- 2 DELIVERY OF ENERGY  
ENERGIEABFLUSS  
UTILISATION  
MANDATA
- 3 EXHAUST  
ENTLEEFUNG  
ECHAFFEMENT  
SCARICO
- 4 CONTROL - SCREEN WITH MESH SIZE:  
STEUERANSCHLUSS; SIEB MIT MASCHENWEITE;  
COMMANDE; TAMIS AVEC OUVERTURE DE MAILLE;  
COMMANDO; VAGLIO CON LARGHEZZA DELLA MAGLIA;

General Specifications: 4S-3M-1, Size 150 14x100 LP		Copyright WABCO®		WABCO	
Doc. Code:	2017-01-B	Sheet:	1	Doc. Code:	400 500 109 0
Class:	1	Size:	150	Language:	ML
Material:	Al	Finish:	4	Revision:	6291
Coarse:	X	Tap:	4	Part Name:	400 500 109 0
Tap:	4	Part Name:	400 500 109 0	Part Name:	400 500 109 0
Tap:	4	Part Name:	400 500 109 0	Part Name:	400 500 109 0



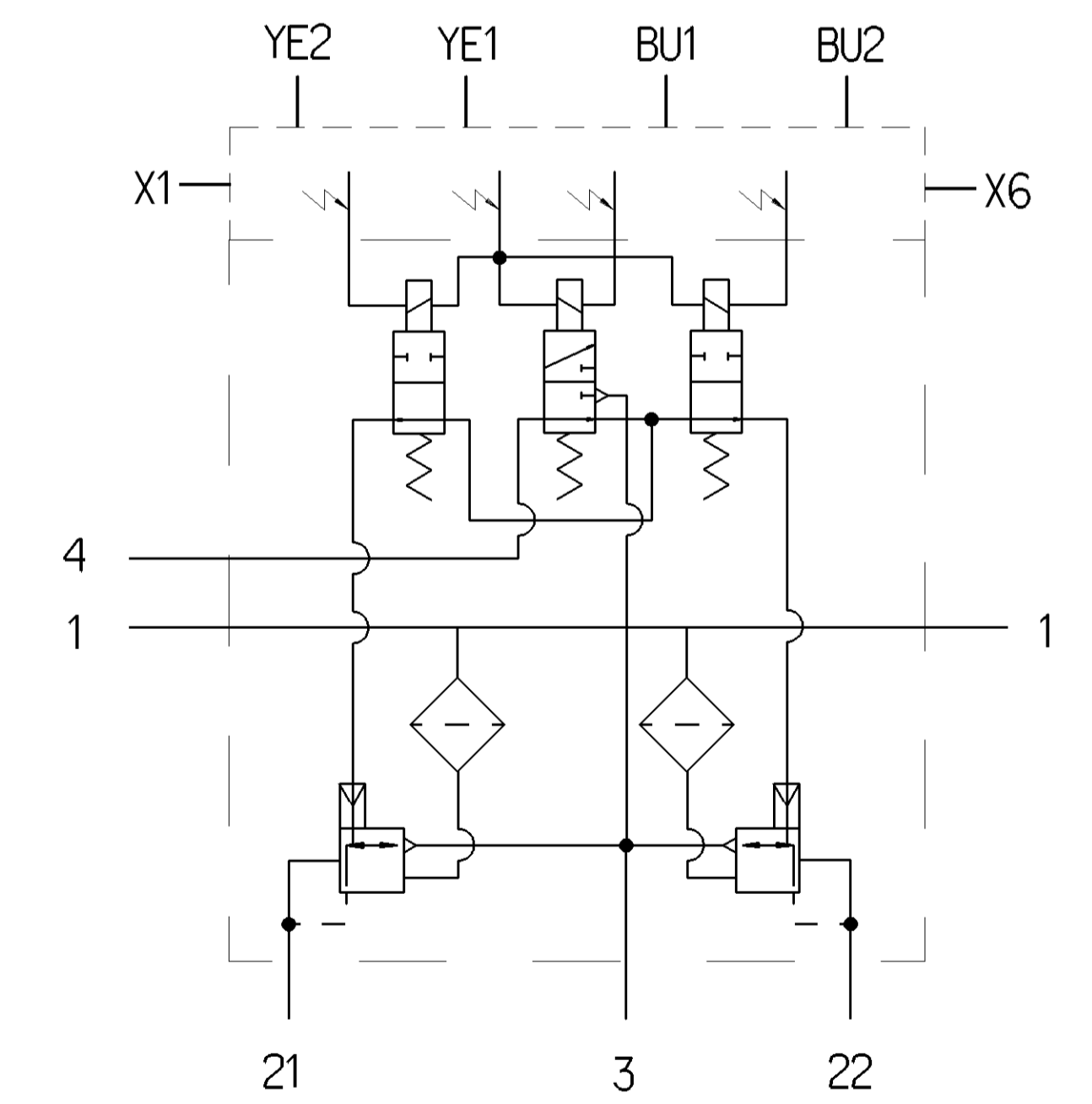
	POWER SUPPLY CONNECTOR VERSORUNGANSCHLUSS (ELEKTR.) RACCORDMENT D' ALIMENTATION CONNESSIONE DI ALIMENTAZIONE
X1.1	WARNING LAMP (FRAME GROUNDED) WARNLAMPE LAMPE TEMOIN LUCE SPIA
X1.2	SECONDARY POWER (STOP LIGHT) SEKUNDÄRE SPANNUNGSVERSORUNG ALIMENTATION ELECTRIQUE SECONDAIRE ALIMENTAZIONE ELETTRICA SECONADIA
X1.3	PRIMARY POWER (PERMANENT) PRIMAERE SPANNUNGSVERSORUNG ALIMENTATION ELECTRIQUE PRIMAIRE ALIMENTAZIONE ELETTRICA PRIMARIA
X1.4	GROUND MASSE MASSE MASSA
X1.5	GENERIC IO D1
X1.6	POWER OUTPUT (DIAGNOSTIC TOOL) SPANNUNGSVERSORUNG FUER DIAGNOSEGERAET ALIMENTATION ELECTRIQUE DIAGNOSTIC ALIMENTAZIONE ELETTRICA DIAGNOSI
X1.7	DIAGNOSTIC LINE SAE J 1708 B
X1.8	DIAGNOSTIC LINE SAE J 1708 A



	ADDITIONAL CONNECTOR ZUSATZANSCHLUSS CONNECTEUR ADDITIONNEL CONNETTORE ADDIZIONALE
X6.1	GENERIC IO D2
X6.2	GENERIC IO A1
X6.3	GENERIC IO A2
X6.4	SENSOR POWER SUPPLY 5V/12V SENSOR SPANNUNGSVERSORUNG 5V/12V ALIMENTATION ELECTRIQUE DU CAPTEUR 5V/12V ALIMENTAZIONE ELETTRICA DI SENSORE 5V/12V
X6.5	GROUND MASSE MASSE MASSA
X6.6	L-MODULATOR AV
X6.7	L-MODULATOR EV
X6.8	GENERIC IO D3

IDENTIFICATION BENENNUNG DENOMINATION DENOMINAZIONE	SYSTEM SYSTEM SYSTEME SISTEMA	COLOUR CODE FARBCODE CODE COULEUR CODICE DI COLORE
400 500 102 0	2S/2M	
400 500 103 0 400 500 105 0	2S/2M	
	4S/2M	
	4S/3M	

- 1 SUPPLY OF ENERGY  
ENERGIEZUFUSS  
ALIMENTATION  
ALIMENTAZIONE
- 2 DELIVERY OF ENERGY  
ENERGIEABFLUSS  
UTILISATION  
MANDATA
- 3 EXHAUST  
ENTLUEFTUNG  
ECHAPPEMENT  
SCARICO
- 4 CONTROL  
STEUERANSCHLUSS  
COMMANDE  
COMANDO



General Specifications: 400 500 103 0, Size: ISO 14462 LP

Further Technical Data: Sheet 1 of 1

Doc. Code: 2017-01-B, 2017-02-07

Class: 1:0, 2:0, 3:0, 4:0, 5:0, 6:5

Size: A 0

WABCO

Trailer Compact ABS  
Anhängerkompakt ABS  
Compact ABS pour Remorque  
Compatto ABS di Rimorchio

400 500 103 0

053 ML 2/2

159765