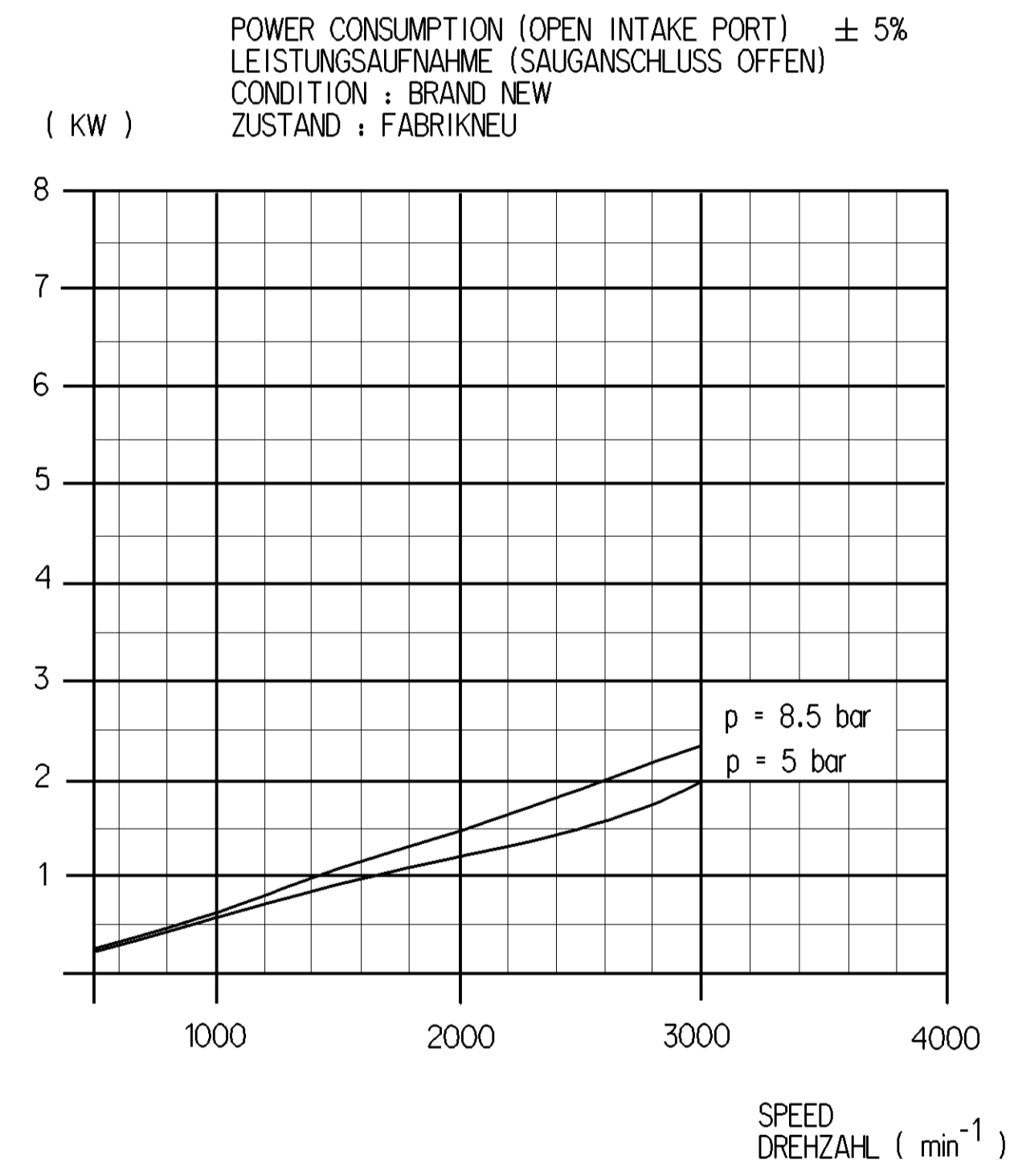
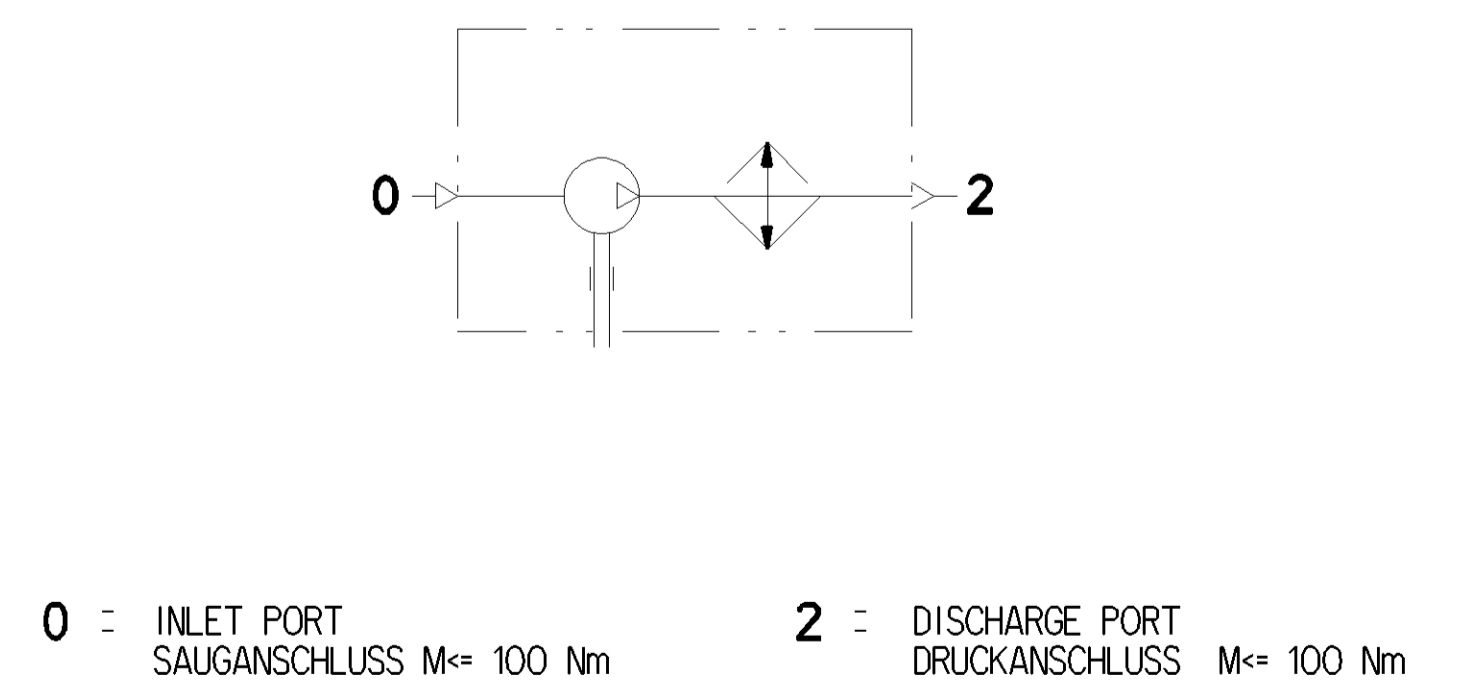
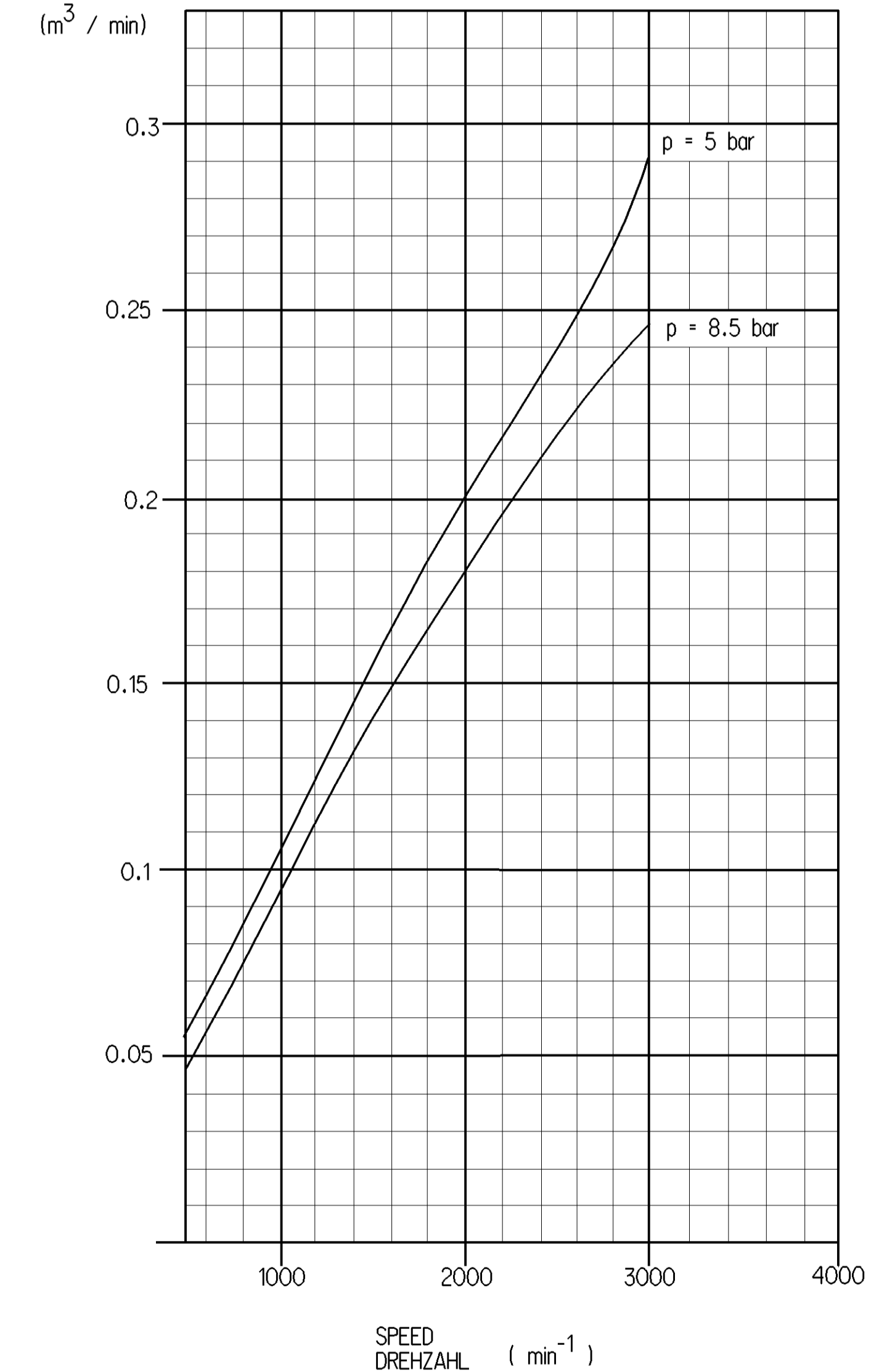


① MAX. THREAD ENGAGEMENT
MAX. EINSCHRAUBTIEFE

BORE; BOHRUNG:	Ø75 mm
STROKE; HUB:	34 mm
SWEPT VOLUME; HUBRAUM:	150 ccm
MAX. WORKING SPEED; MAX. BETRIEBSREHZAHL:	$n_{max} = 2600 \text{ min}^{-1}$
OVERSPEED (TEMPORARY MAX. 4 SEC.); UEBERREHZAHL (KURZZEITIG MAX. 4 SEC.):	$n_{ue} = 2800 \text{ min}^{-1}$
MAX. WORKING PRESSURE; MAX. BETRIEBSDRUCK:	$p = 8.5 \text{ bar}$
SHORT TERM MAX. PRESSURE AT DISCHARGE PORT (TEMPORARILY $\leq 4 \text{ SEC.}$); KURZZEITIGER HOECHSTDRUCK AM DRUCKSTUTZEN (KURZZEITIG $\leq 4 \text{ SEC.}$):	$p = 10 \text{ bar}$
REQUIRED COOLING AIR SPEED; ERFORDERLICHE KUEHLUFTGESCHWINDIGKEIT:	$\leq 8 \text{ bar } 4 \text{ m/s}$ $> 8 \text{ bar } 6 \text{ m/s}$
MAX. PERMISSIBLE TILT DURING CONTINUOUS WORKING; MAX. ZULAESSIGE NEIGUNG IM DAUERBETRIEB:	
LUBRICATION; SPLASH LUBRICATION SCHMIERART; TAUCHSCHMIERUNG	
OIL CONTENT; ÖLINHALT:	140 ccm
OIL TOPPING UP ONLY IN HORIZONTAL POSITION ÖLNACHFÜLLUNG NUR IN WAAGRECHTER LAGE	



AIR DELIVERY: FREE AIR (OPEN INTAKE PORT) ± 5%
FOERDERMENGE: ENTSPANNTE LUFT (SAUGANSCHLUSS OFFEN)
CONDITION: BRAND NEW
ZUSTAND: FABRIKNEU



(...) AUXILIARY DIMENSION
HILFSMASS

PORTS PROTECTED
ANSCHLUSSE GESCHUETZT

General Specifications: 411-534-1, Size ISO 14400 LP		Copyright WABCO®		WABCO	
Further Technical Data: 411 003 004 0		Date: 2017-06-22		SINGLE CYLINDER COMPRESSOR	
Doc. Code: 035		Sheet: 1 To 5		EINZYLINDERKOMPRESSOR	
General Tolerances: ISO 261		2017-06-22		Hirzog	
Range of Nominal Dimensions (± mm)		Class		Date of 1st issue: 2017-06-20	
Class	± 50	± 180	± 400	Doc. Code	Language
Size	0.5	1.0	1.5	005	DE
Medium	X 1.0	2.0	3.0	006	1/1
Coarse	2.0	3.5	5.0	007	
Tapped Holes acc.:	A 0		CREO	E3D No. Revision: 1 * A	
Tolerance class: Appr. Dimensioned	5000		411 003 011 0		