

BORE: BOHRUNG: $\varnothing 75$ mm

STROKE: HUB: 36 mm

SWEEP VOLUME: HILFRAUM: 159 cm³

MAX. WORKING SPEED: MAX. BETRIEBSDREHZAHL: $n_{max} = 3000$ min⁻¹

OVERSPEED (TEMPORARY MAX. 4 SEC.): UEBERDREHZAHL (KURZZEITIG MAX. 4 SEC.): $n_{ue} = 1.3 \cdot n_{max}$

MAX. WORKING PRESSURE: MAX. BETRIEBSDRUCK: $p = 10$ bar

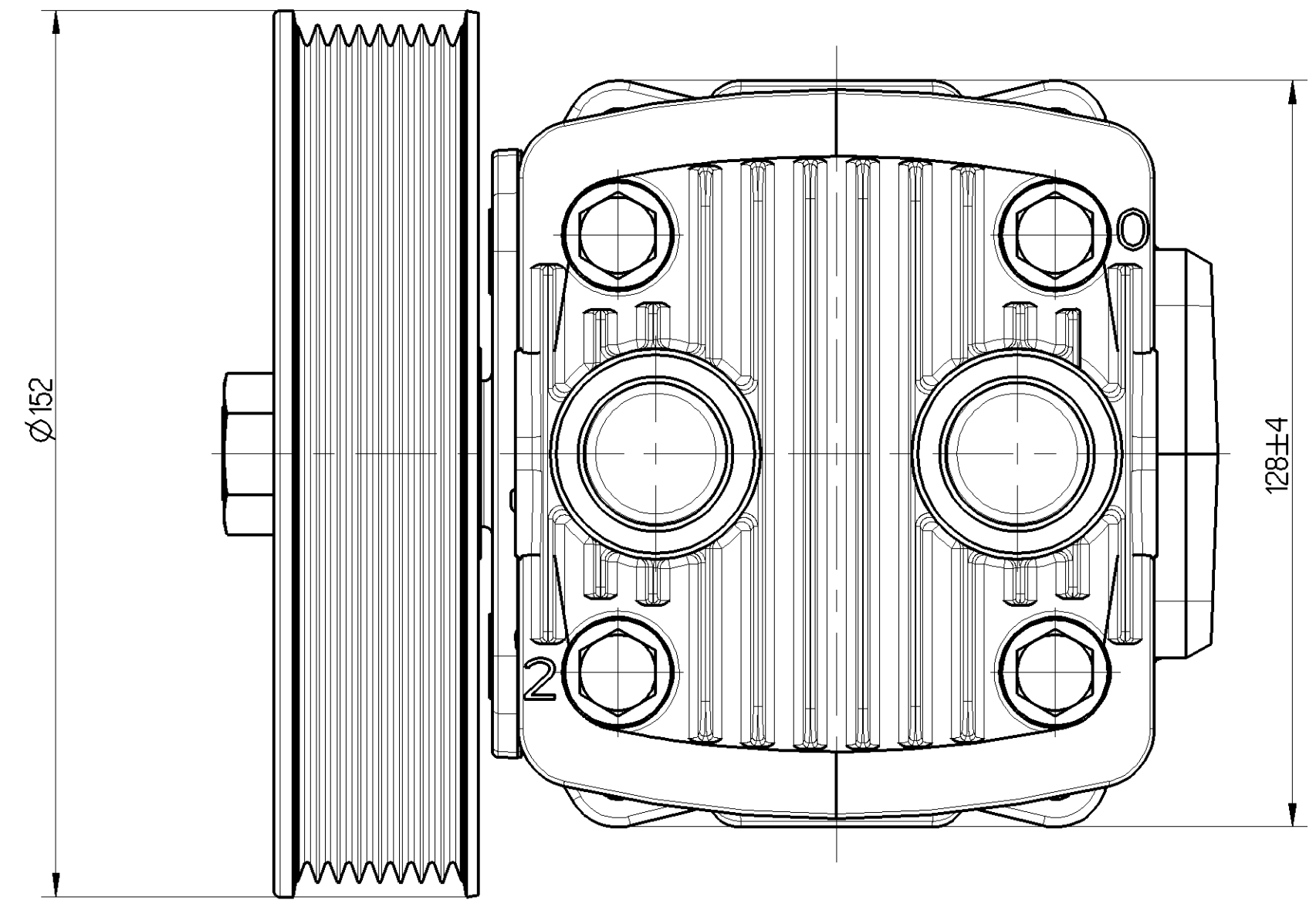
SHORT TERM MAX. PRESSURE AT DISCHARGE PORT (TEMPORARILY ≤ 4 SEC.): KURZZEITIGER HOECHSTDRUCK AM DRUCKSTUTZEN (KURZZEITIG ≤ 4 SEC.): $p = 12$ bar

REQUIRED COOLING AIR SPEED: ERFORDERLICHE KUEHLLUFTGESCHWINDIGKEIT: < 8 bar 4m/s
 > 8 bar 6m/s

END PLAY OF CRANKSHAFT: AXIALSPIEL DER KURBELWELLE: 0.2...0.6 mm

MAX. PERMISSIBLE TILT DURING CONTINUOUS WORKING: MAX. ZULAESSIGE NEIGUNG IM DAUERBETRIEB: 20°

LUBRICATION: LUBRICATION SUPPLIED FROM ENGINE
SCHMIERTAG: UMLAUFSCHEMUNG MIT DRUCKOELANSCHLUSS



0 : INLET PORT SAUGANSCHLUSS $M \times 100$ Nm

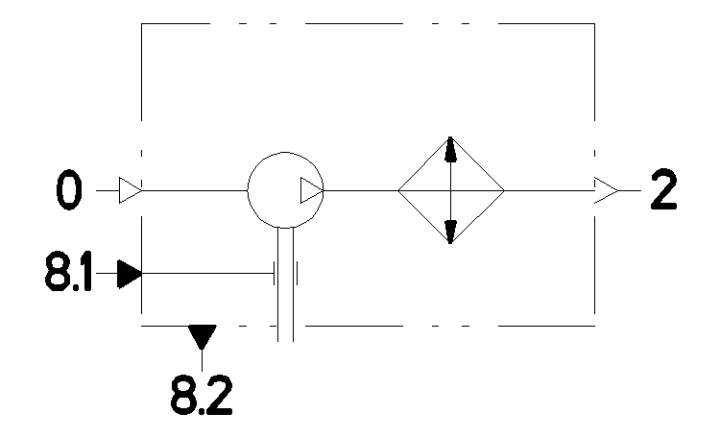
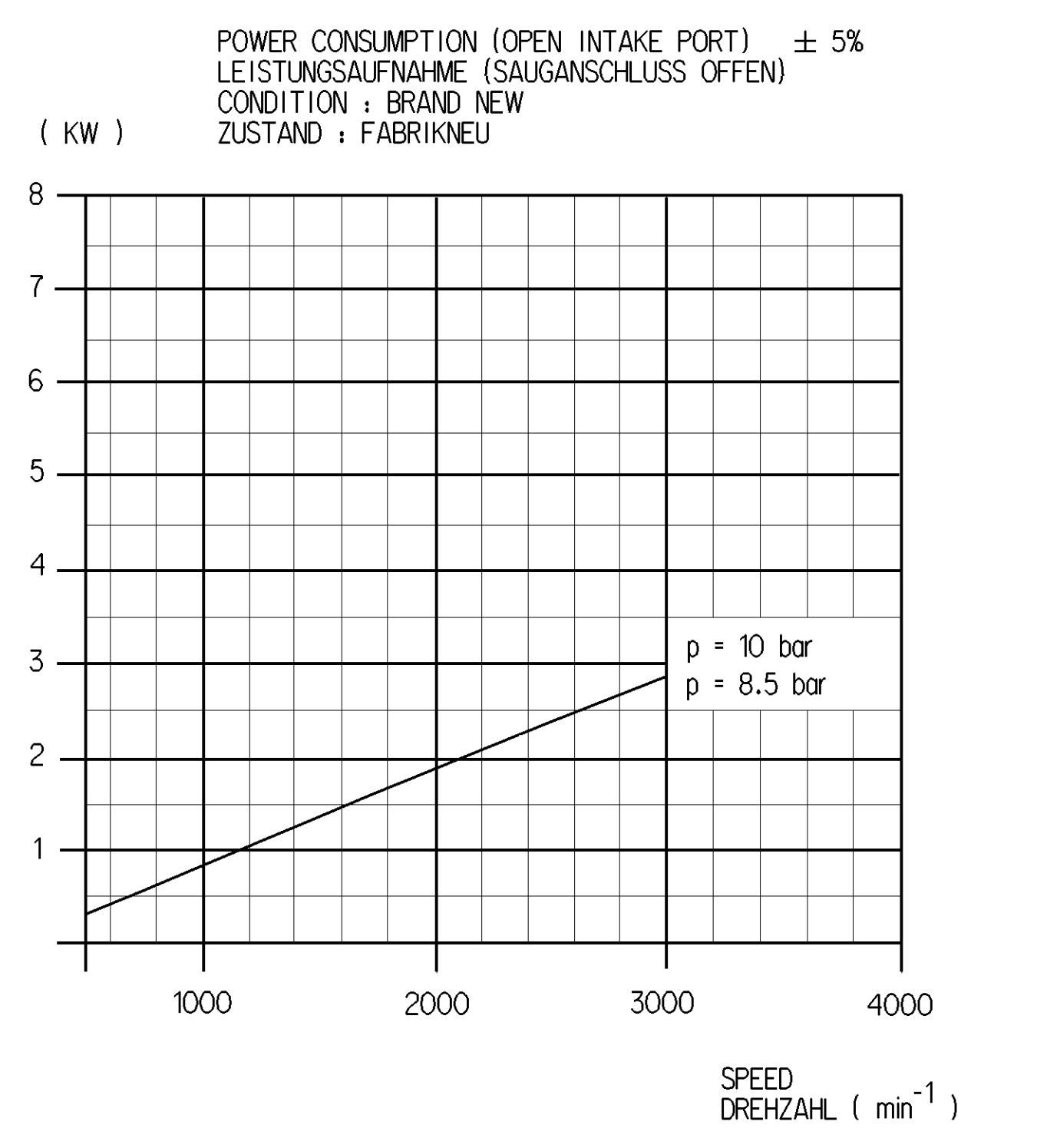
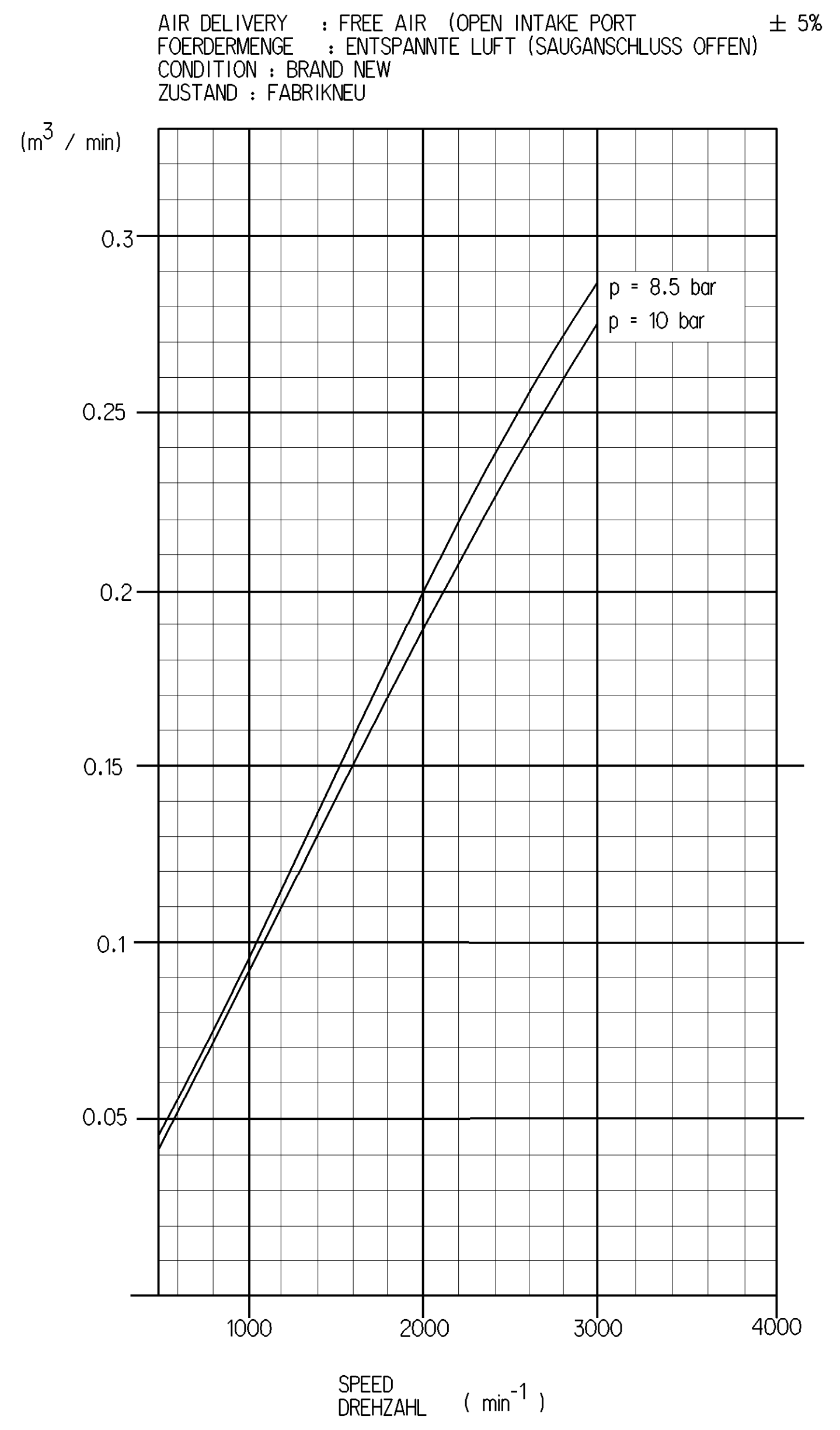
2 : DISCHARGE PORT DRUCKANSCHLUSS $M \times 100$ Nm

8.1 : OIL SUPPLY DRUCKOELANSCHLUSS $M \times 15$ Nm

8.2 : OIL DRAIN OELRUECKLAUF $M \times 60$ Nm

PORTS PROTECTED ANSCHLUESSE GESCHUETZT

MAX. THREAD ENGAGEMENT MAX. EINSCHRAUBTIEFE



(...) AUXILIARY DIMENSION HILFSSMASS

General Specifications: JED-354-0		Copyright WABCO®		WABCO	
Further Technical Data: 411 141 003 0		Title: System		SINGLE CYLINDER COMPRESSOR	
Doc. Code: 030		Date: 2017-05-09		EINZYLINDER KOMPRESSOR	
General Tolerances: JED-261		Brand: Hertzog			
Range of Nominal Dimensions (± mm)		Part: 10.378			
Class	to ± 0.5	to ± 1.0	to ± 1.5	to ± 2.0	to ± 3.0
Medium	X 1.0	2.0	3.0	4.0	5.0
Coarse	X 2.0	3.5	5.0	6.5	± 3°
Tapped holes acc. JED-152		Scale: 1:1		Medium: 1:1	
Tapped holes acc. JED-152		Material: 173117		Production: 13 x C	
Tapped holes acc. JED-152		Drawing No.: 411 141 003 0		Date of 1st issue: 2017-05-09	
Tapped holes acc. JED-152		Revision: 005		Language: DE	
Tapped holes acc. JED-152		Sheet: 1/1		Scale: 1/1	