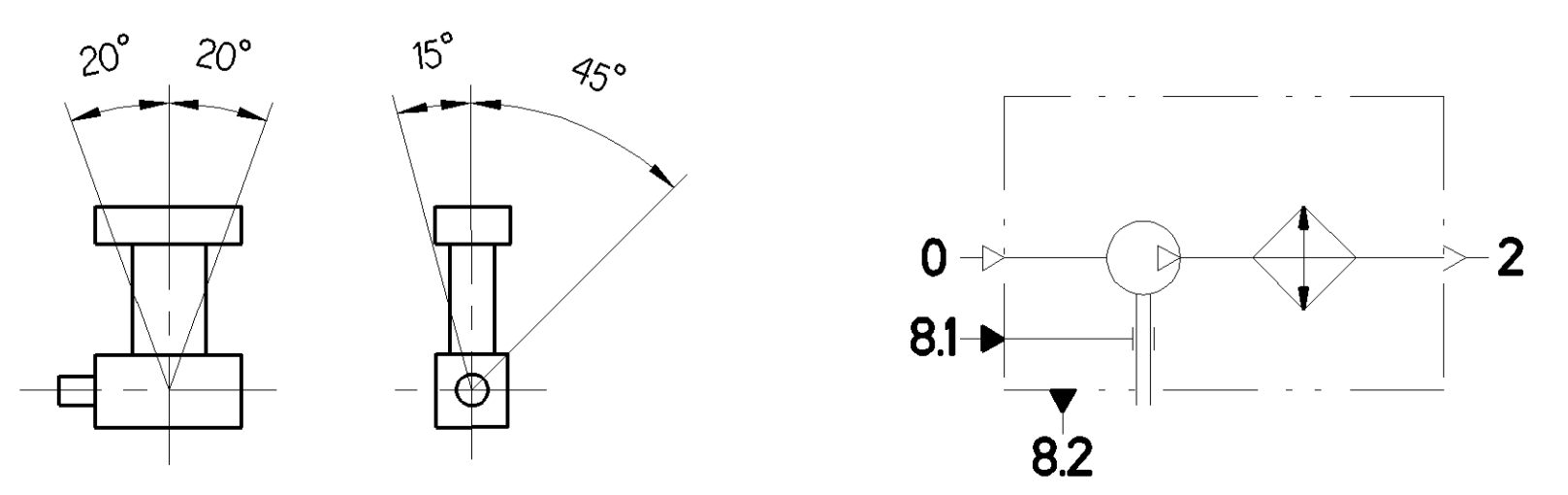
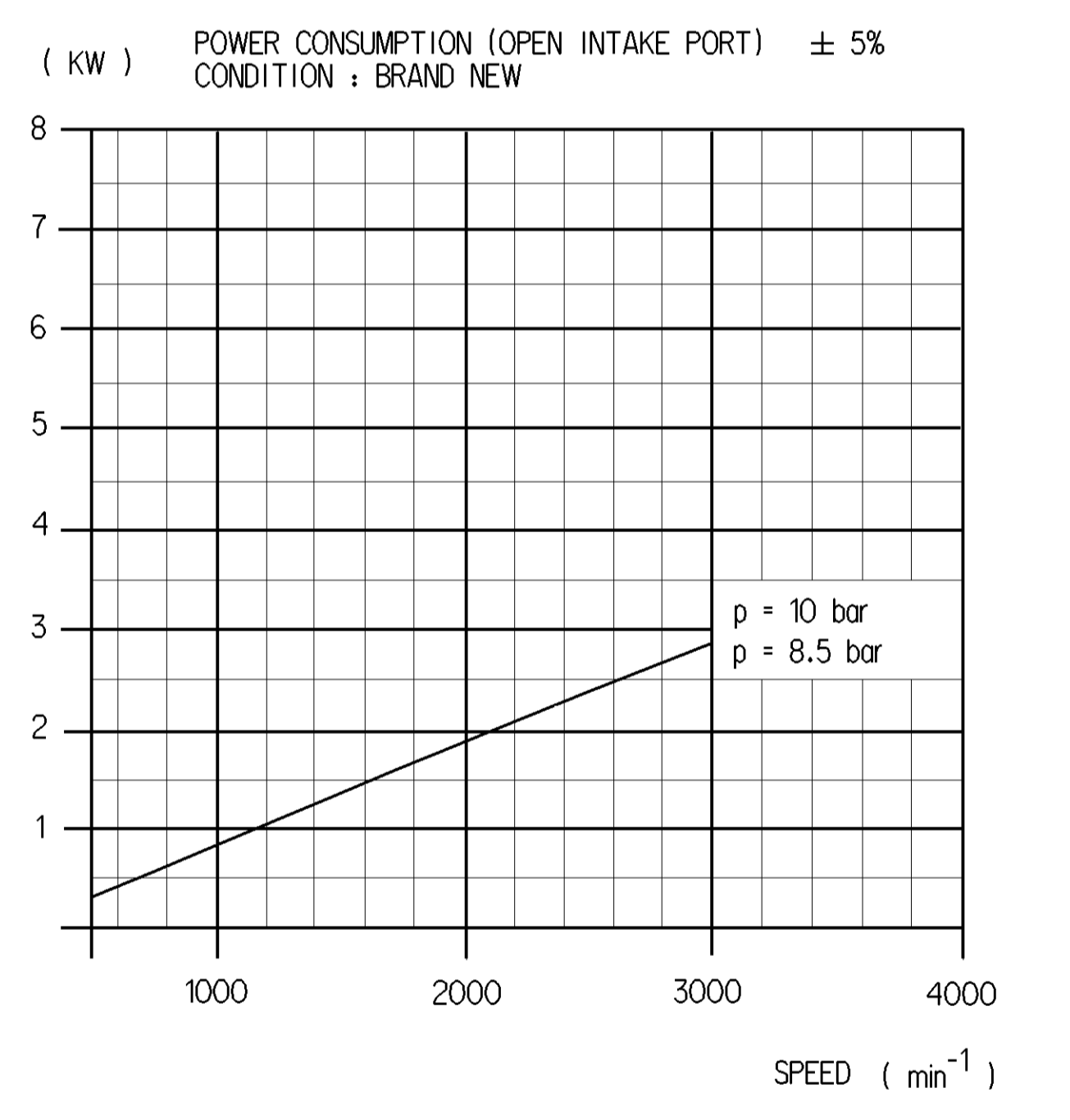
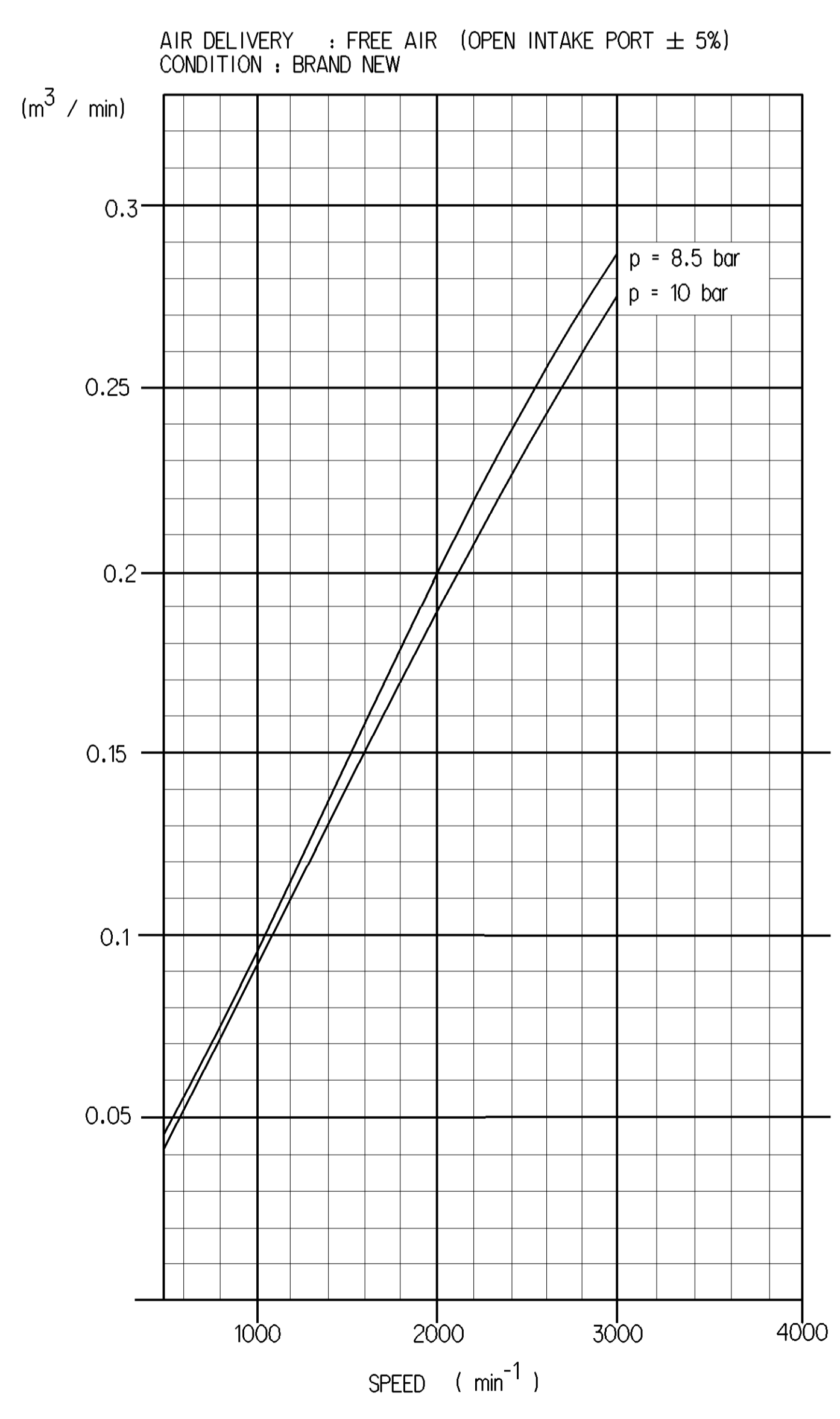


WORKING MEDIUM	AIR
COOLANT	WATER WITH ANTIFREEZE
BORE	∅ 75 mm
STROKE	36 mm
SWEPT VOLUME	159 cm ³
MAX. WORKING SPEED	n _{max} = 3000 min ⁻¹
OVERSPEED (MAX. 4 SEC.)	n _{ue} = 1.3 x n _{max}
MAX. WORKING PRESSURE	10 bar (2)
TOP PRESSURE (MAX. 4 SEC)	12 bar (2)
END PLAY OF CRANKSHAFT	0.2 ... 0.6 mm
LUBRICATION SUPPLIED FROM ENGINE	
PORTS PROTECTED	
REQUIED COOLING AIR SPEED	for <= 8 bar - 4 m/s for > 8 bar - 6 m/s

(2) MEASURE AT DISCHARGE PORT
MAX. PERMISSIBLE TILT DURING CONTINUOUS WORKING



0	SUCTION PORT	M <= 100 Nm
2	DISCHARGE PORT	M <= 100 Nm
8.1	OIL SUPPLY	M <= 15 Nm
8.2	OIL DRAIN	M <= 60 Nm



General Specifications		JED-354-0	Copyright WABCO®	WABCO	
Further Technical Data		411 141 000 0	WABCO	SINGLE CYLINDER COMPRESSOR	
Doc. Code: 030		1	Sheet: 1	EINZYLINDER KOMPRESSOR	
General Tolerances: ISO 2011		2016-12-01	Trokajo		
Range of Nominal Dimensions (± mm)		2016-12-01	Skidston		
Class	to	± 50	± 180	± 400	± 400
Frame	0.5	1.0	1.5	2.0	
Medium	X	1.0	2.0	3.0	4.0
Course		2.0	3.5	5.0	6.5
Tapped Holes acc.:					
Tolerance class: Appoint Dimensioned					
A 0		CREO		411 141 004 A	005 EN 1/1
					2016-12-01
					2009

(...) AUXILIARY DIMENSION
① CUSTOMER'S LABEL