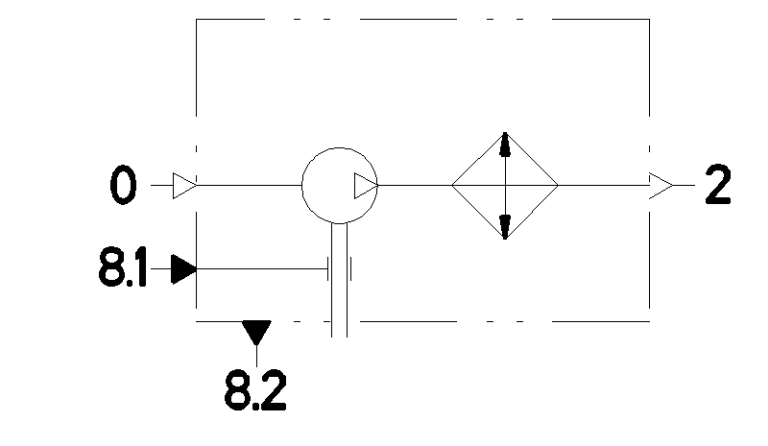
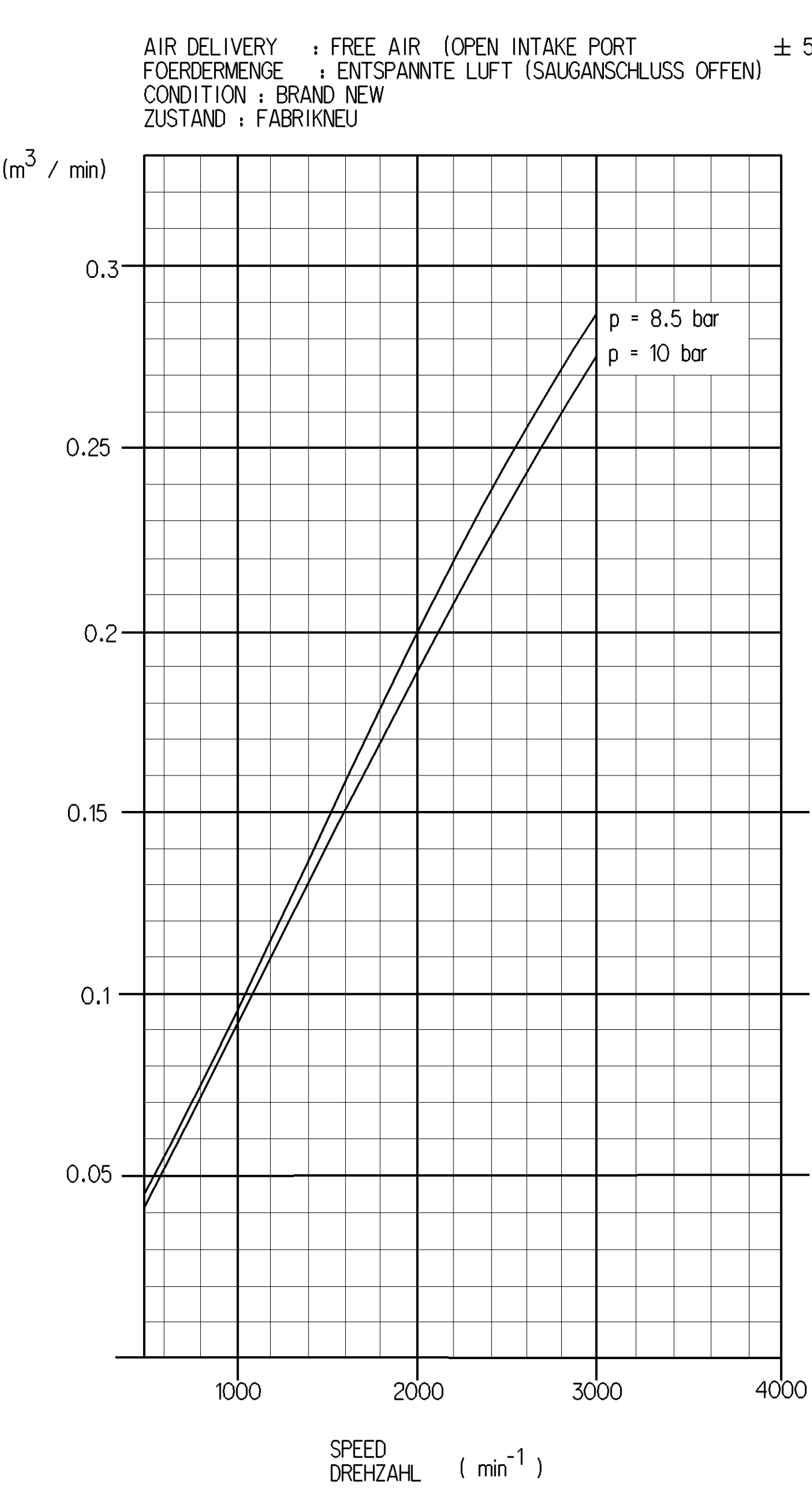
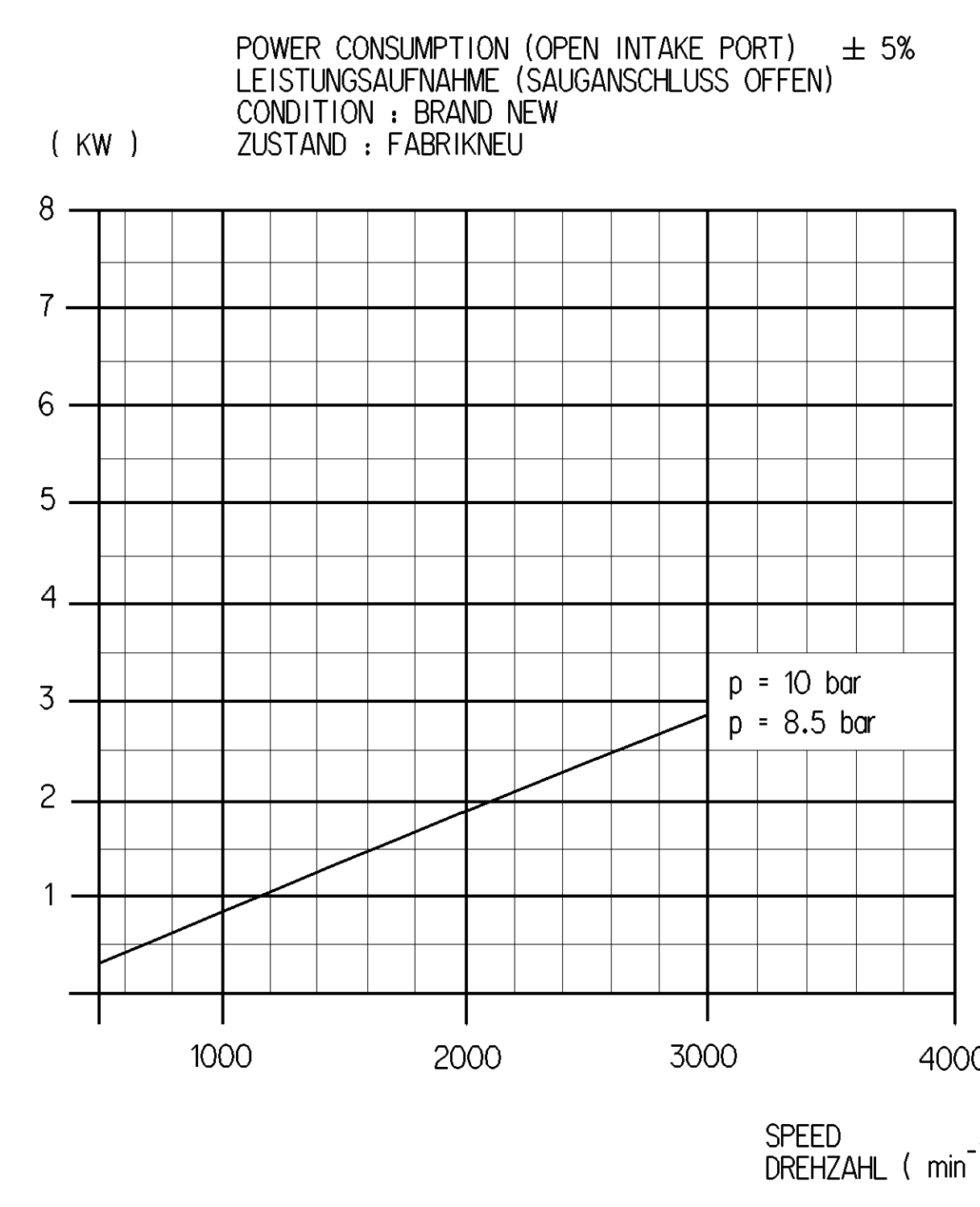


BORE: BOHRUNG:	∅75 mm
STROKE: HUB:	36 mm
SWEPT VOLUME: HUBRAUM:	159 cm ³
MAX. WORKING SPEED: MAX. BETRIEBSDREHZAHL:	n _{max} = 3000 min ⁻¹
OVERSPEED (TEMPORARY MAX. 4 SEC.): LEBERDREHZAHL (KURZZEITIG MAX. 4 SEC.):	n _{ue} = 1.3 n _{max}
MAX. WORKING PRESSURE: MAX. BETRIEBSDRUCK:	p = 8.5 bar (F)
MAX. PRESSURE AT DISCHARGE PORT: HOECHSTDRUCK AM DRUCKSTUTZEN:	p = 10 bar (F)
SHORT TERM MAX. PRESSURE AT DISCHARGE PORT (TEMPORARILY <= 4 SEC.): KURZZEITIGER HOECHSTDRUCK AM DRUCKSTUTZEN (KURZZEITIG <= 4 SEC.):	p = 12 bar (F)
REQUIRED COOLING AIR SPEED: ERFORDERLICHE KUEHLUFTGESCHWINDIGKEIT:	<= 8 bar 4m/s > 8 bar 6m/s
END PLAY OF CRANKSHAFT: AXIALSPIEL DER KURBELWELLE:	0.2...0.6 mm
MAX. PERMISSIBLE TILT DURING CONTINUOUS WORKING: MAX. ZULAESSIGE NEIGUNG IM DAUERBETRIEB:	30° 20° 45° 15°
LUBRICATION: LUBRICATION SUPPLIED FROM ENGINE SCHMIERART: UMLAUFSCHMIERUNG MIT DRUCKOELANSCHLUSS	



- 0 : INLET PORT SAUGANSCHLUSS M_v= 100 Nm
- 2 : DISCHARGE PORT DRUCKANSCHLUSS M_v= 100 Nm
- 8.1 : OIL SUPPLY DRUCKOELANSCHLUSS
- 8.2 : OIL DRAIN OELRUECKLAUF

PORTS PROTECTED ANSCHLUESSE GESCHUTZT

(...) AUXILIARY DIMENSION HILFSMASS

General Specification: 411-334-1 - Size: ISO 14400 LP	Copyright: WABCO	Material No.: 411 141 930 0	Date of 1st Issue: 005 DE 1/1
Further Technical Data: 411 141 000 0	Date: 2015-03-03	Drawn: 1 to 3	Doc. Code: Language: Sheet
Doc. Code: 005	Scale: 1:1	Wiedemann	
General Tolerances: ISO 201	2015-03-05	Herzog	
Range of Nominal Dimensions (± mm)	0.1 to 0.5	0.5 to 1.0	1.0 to 3.0
Class	IT 10	IT 9	IT 8
File	0.5	1.0	1.5
Medium	1.0	2.0	3.0
Coarse	2.0	3.5	5.0
Trapped Holes acc.:	166828 17 x F 5000 411419300 of 04-02-26		

This drawing is the property of WABCO. It is not to be reproduced, copied, or distributed without the written consent of WABCO. WABCO is not responsible for any damage or loss of data resulting from the use of this drawing. WABCO is not responsible for any damage or loss of data resulting from the use of this drawing. WABCO is not responsible for any damage or loss of data resulting from the use of this drawing.