

TECHNICAL DATA
 TECHNISCHE DATEN
 CARACTERISTIQUES TECHNIQUES
 CARATTERISTICHE TECNICHE

BORE: $\varnothing 90$ mm
 BOHRUNG: $\varnothing 90$ mm
 ALESAGE: $\varnothing 90$ mm
 ALESAGGIO: $\varnothing 90$ mm

STROKE: 36 mm
 HUB: 36 mm
 COURSE: 36 mm
 CORSA: 36 mm

SWEPT VOLUME: 229 cm³
 HUBRAUM: 229 cm³
 CYLINDREE: 229 cm³
 CYLINDRATA: 229 cm³

MAX. WORKING SPEED: $n_{max} = 3000 \frac{1}{min}$
 MAX. BETRIEBSDREHZAHL: $n_{max} = 3000 \frac{1}{min}$
 VITESSE D'UTILISATION MAXI.: $n_{max} = 3000 \frac{1}{min}$
 VELOCITA DI ESERCIZIO MAXI.: $n_{max} = 3000 \frac{1}{min}$

OVERSPEED (TEMPORARY MAX. 4 SEC.): $n_{ov} = 1.3 \times n_{max}$
 UEBERDREHZAHL (KURZZEITIG MAX. 4 SEC.): $n_{ov} = 1.3 \times n_{max}$
 SURVITESSE (DE' COURTE DUREE MAXI. 4 SEC.): $n_{ov} = 1.3 \times n_{max}$
 SOVRAVELOCITA (BREVE TEMPO SOLO MAX. 4 SEC.): $n_{ov} = 1.3 \times n_{max}$

MAX. WORKING PRESSURE: $p_e = 10$ bar
 MAX. BETRIEBSDRUCK: $p_e = 10$ bar
 PRESSION D'UTILISATION MAXI.: $p_e = 10$ bar
 PRESSIONE DI ESERCIZIO MAXI.: $p_e = 10$ bar

LUBRICATION: LUBRICATION SUPPLIED FROM ENGINE
 SCHMIERTART: UMLAUFSCHMIERUNG MIT DRUCKOELANSCHLUSS (UD)
 GRAISSAGE: GRAISSAGE PAR CIRCULATION ALIMENTATION PAR LE MOTEUR
 LUBRIFICAZIONE: LUBRIFICAZIONE A CIRCOLAZIONE ALIMENTAZIONE DAL MOTORE

PERFORMANCE DIAGRAM: 411 142 000 0 (997)
 LEISTUNGSDIAGRAMM: 411 142 000 0 (997)
 DIAGRAMME DE PUISSANCE: 411 142 000 0 (997)
 DIAGRAMMA DI POTENZA: 411 142 000 0 (997)

REQUIRED COOLING AIR SPEED: 6m/s *
 ERFORDERLICHE KUEHLLUFTGESCHWINDIGKEIT: 6m/s *
 VITESSE DE VENTILATION NECESSAIRE: 6m/s *
 VELOCITA DI VENTILAZIONE NECESSARIA: 6m/s *

* MAX. PERMISSIBLE PRESSURE TEMPERATURE IN SERVICE 220°C
 MAX. ZULAESSIGE DRUCKSTUTZENTEMPORATUR WAEHREND DES FAHRBETRIEBES 220°C
 TEMPERATURE MAX. ADMISSIBLE EN SERVICE 220°C
 TEMPERATURA MAX. AMMISSIBLE IN SERVIZIO 220°C

END PLAY OF CRANKSHAFT: 0.2...0.6 mm
 AXIALSPIEL DER KURBELWELLE: 0.2...0.6 mm
 JEU AXIAL DU VILEBREQUIN: 0.2...0.6 mm
 GIOCO ASSIALE DELL'ALBERO A GOMITO: 0.2...0.6 mm

MAX. PERMISSIBLE TILT:
 MAX. ZULAESSIGE EINBAUNEIGUNG:
 INCLINAISON ADMISSIBLE MAXI.:
 INCLINAZIONE AMMISSIBILE MASS.:

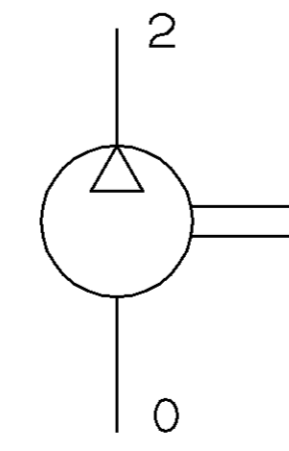
FREE FROM ASBESTOS
 ASBESTFREI
 EXEMPT D'AMIANTE
 ESENTE D'AMIANTO

0 = INLET PORT
 SAUGANSCHLUSS M ≤ 100 Nm
 ASPIRATION
 ASPIRAZIONE

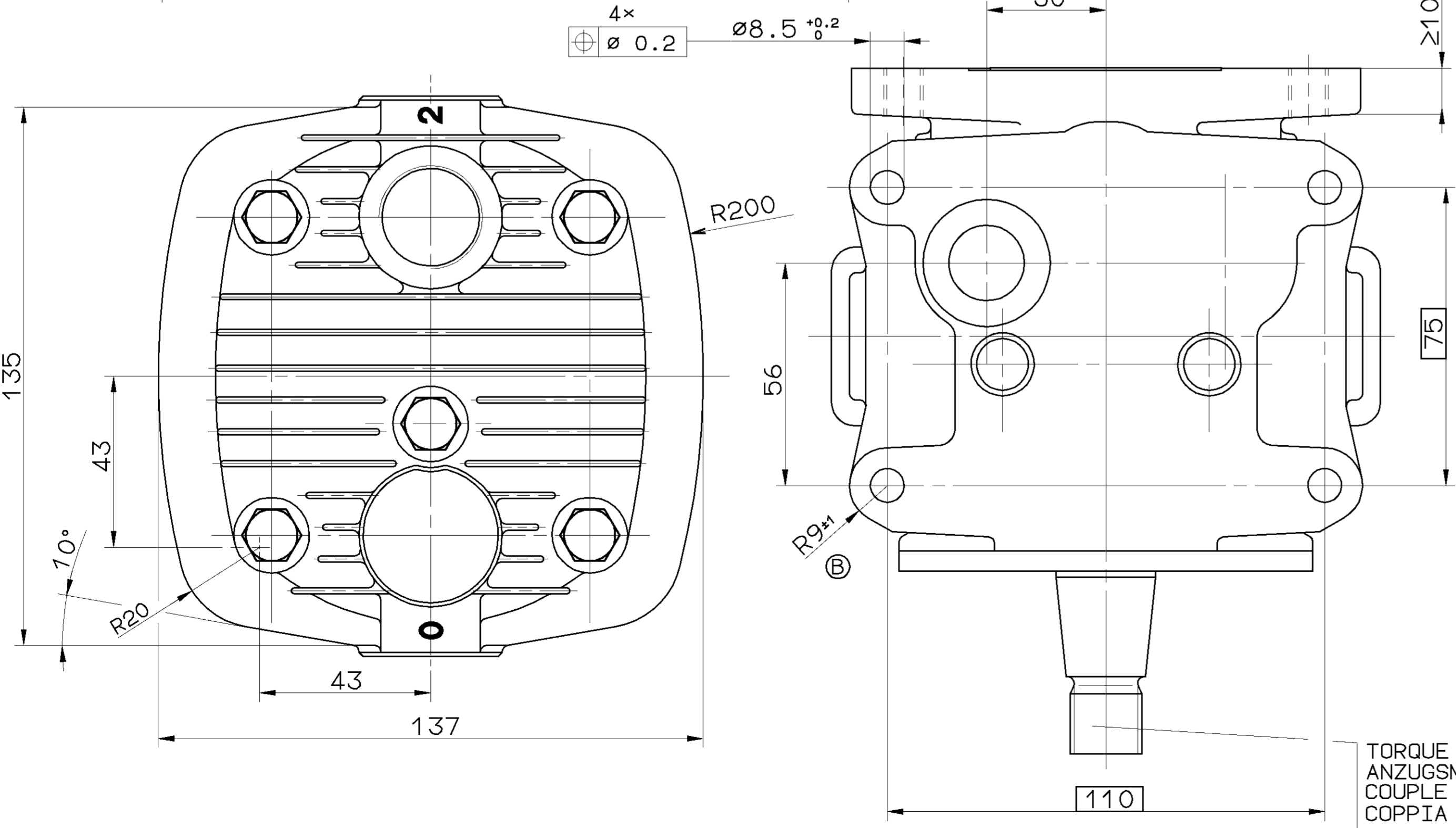
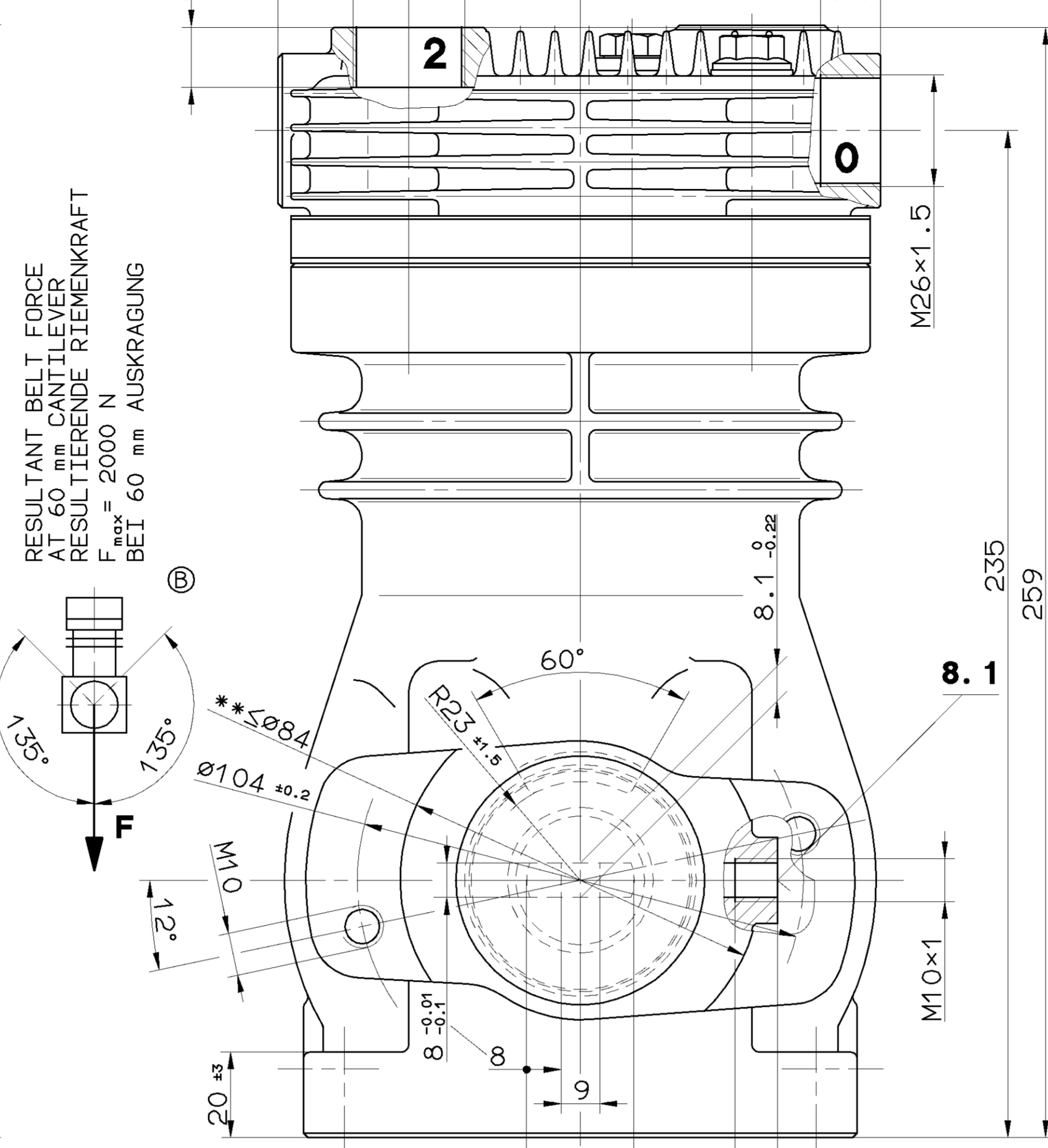
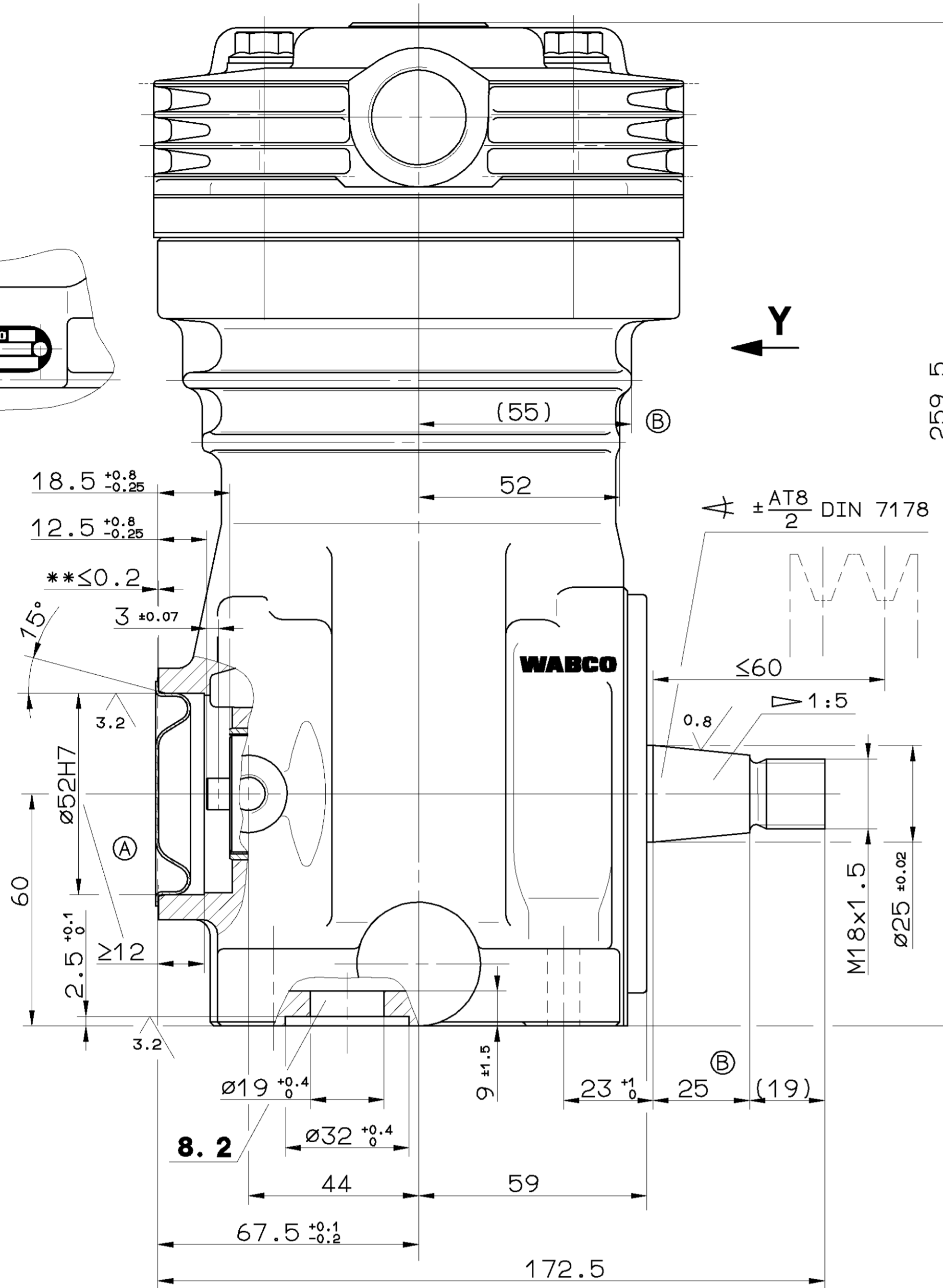
2 = DISCHARGE PORT
 DRUCKANSCHLUSS M ≤ 100 Nm
 REFOULEMENT
 COMPRESSIONE

8.1 = OIL SUPPLY
 DRUCKOELANSCHLUSS M ≤ 25 Nm
 ORIFICE D'ARRIVEE D'HUILE
 ORIFIZIO D'ARRICO OLIO

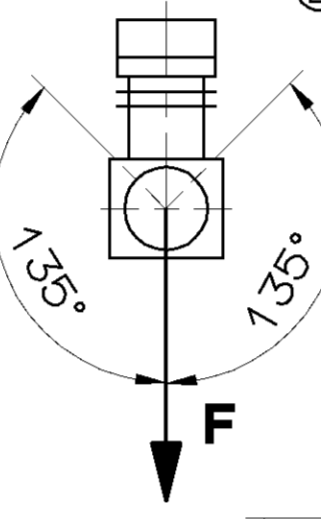
8.2 = OIL DRAIN
 OELRUECKLAUF
 RETOUR D'HUILE
 RETORNO OLIO



TORQUE OF BELT PULLEY NUT
 ANZUGSMOMENT DER RIEMENSCHLEIBENMUTTER = 100 ± 10 Nm
 COUPLE DE SERRAGE DE L'ECROU DE LA POULIE
 COPPIA DI SERRAGGIO DEL DADO DELLA PULEGGIA



RESULTANT BELT FORCE
 AT 60 mm CANTILEVER
 RESULTIERENDE RIEMENKRAFT
 F_{max} = 2000 N
 BEL 60 mm AUSKRAGUNG



GENERAL SPECIFICATION: JED-034		CAD/CAM DRAWING		WABCO	
FURTHER TECHNICAL DATA:		DATE	SIGNATURE	DRAWN: 95-12-02, GROSSKOPF	
DOC. CODE:	SHEET: TO	CHECKED: 95-12-02, KRAMER	STANDARDIZATION: COMPRESSOR MONOCYLINDRIQUE		
GENERAL TOLERANCES		MASS SCALE: 10.4 kg		PRODUCT IDENTIFICATION NO. 411 142 819 0	
RANGE OF NOMINAL DIMENSIONS (± mm)		SIZE T.R.I.		DOC. CODE 605	
CLASS	1)	SCALE	REPLACEMENT FOR		
FINE	X	1:1	SHAPE CODE		
MEDIUM		1:1	REPLACEMENT FOR		
COARSE		1:1	REPLACEMENT FOR		
TAPPED HOLES ACC. ISO 4039 / JED-162		DATE		REPLACEMENT FOR	
1) TOLERANCE CLASS APPLIED CROSSHATCHED		DATE		REPLACEMENT FOR	

TUTTE LE INFORMAZIONI DI RIPRODUZIONE DI QUESTO DOCUMENTO, NE UTILIZZANDO IL CONTENUTO O DEI
 COMPONENTI, SONO PERmesse. E' vietata espressamente la ristampa o l'uso non autorizzato senza permesso scritto dalla WABCO.
 ALL RIGHTS RESERVED. NO PART OF THIS DOCUMENT MAY BE REPRODUCED OR TRANSMITTED IN ANY FORM OR BY ANY MEANS, ELECTRONIC OR MECHANICAL, INCLUDING PHOTOCOPYING, RECORDING, OR BY ANY INFORMATION STORAGE AND RETRIEVAL SYSTEM, WITHOUT PERMISSION IN WRITING FROM WABCO.