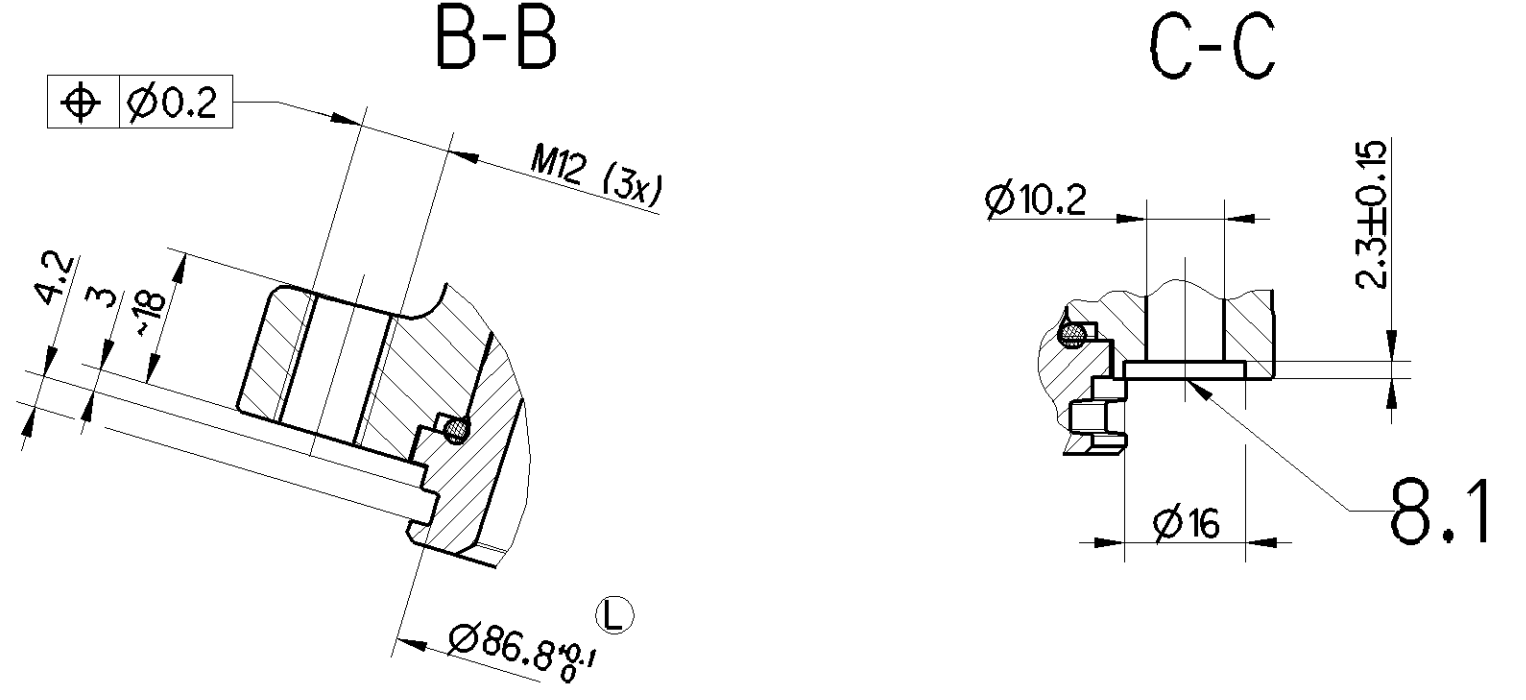
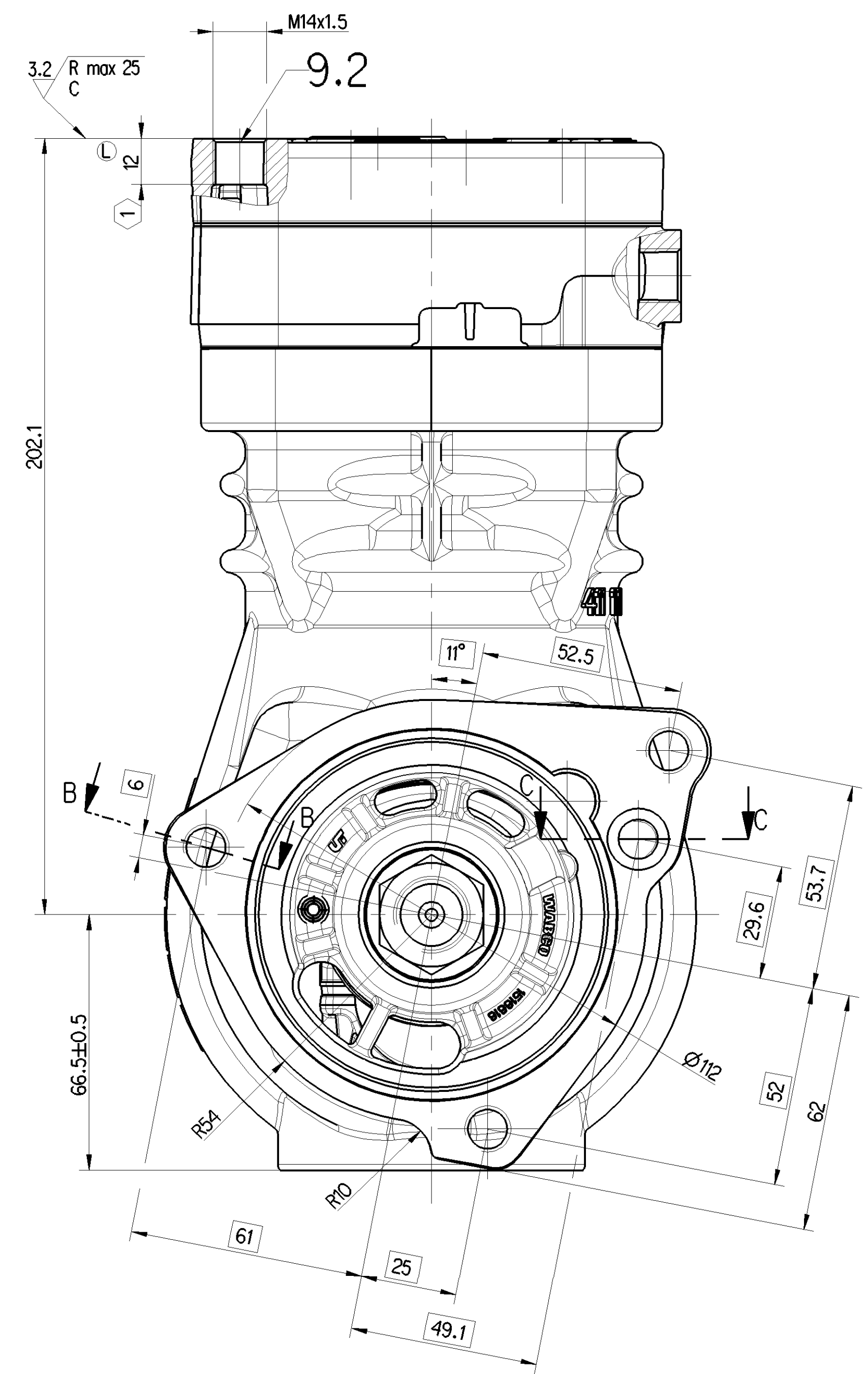
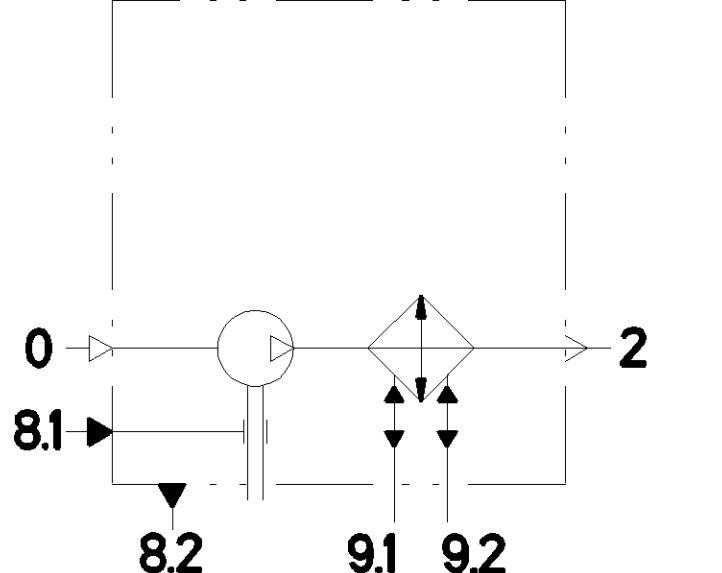
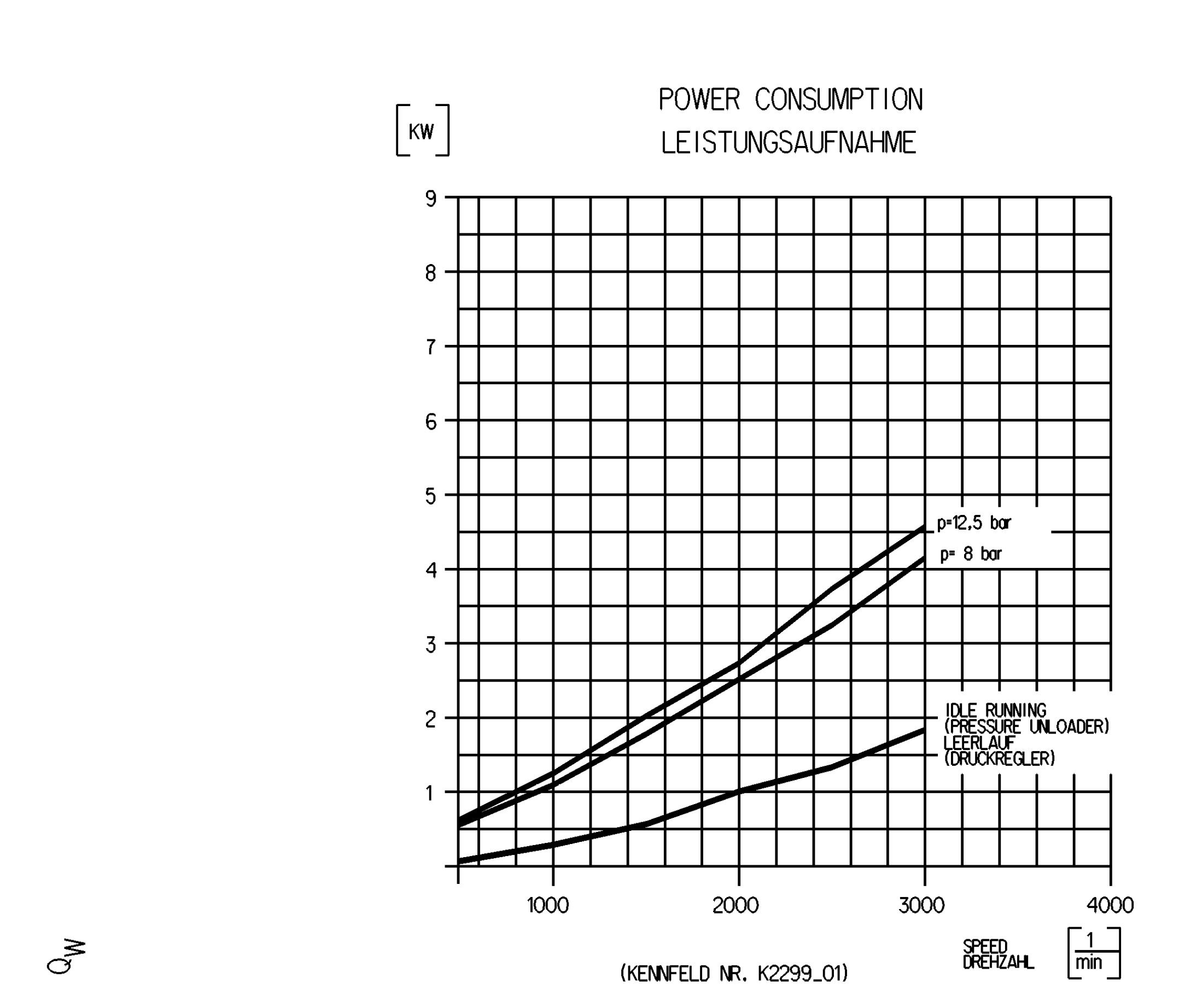
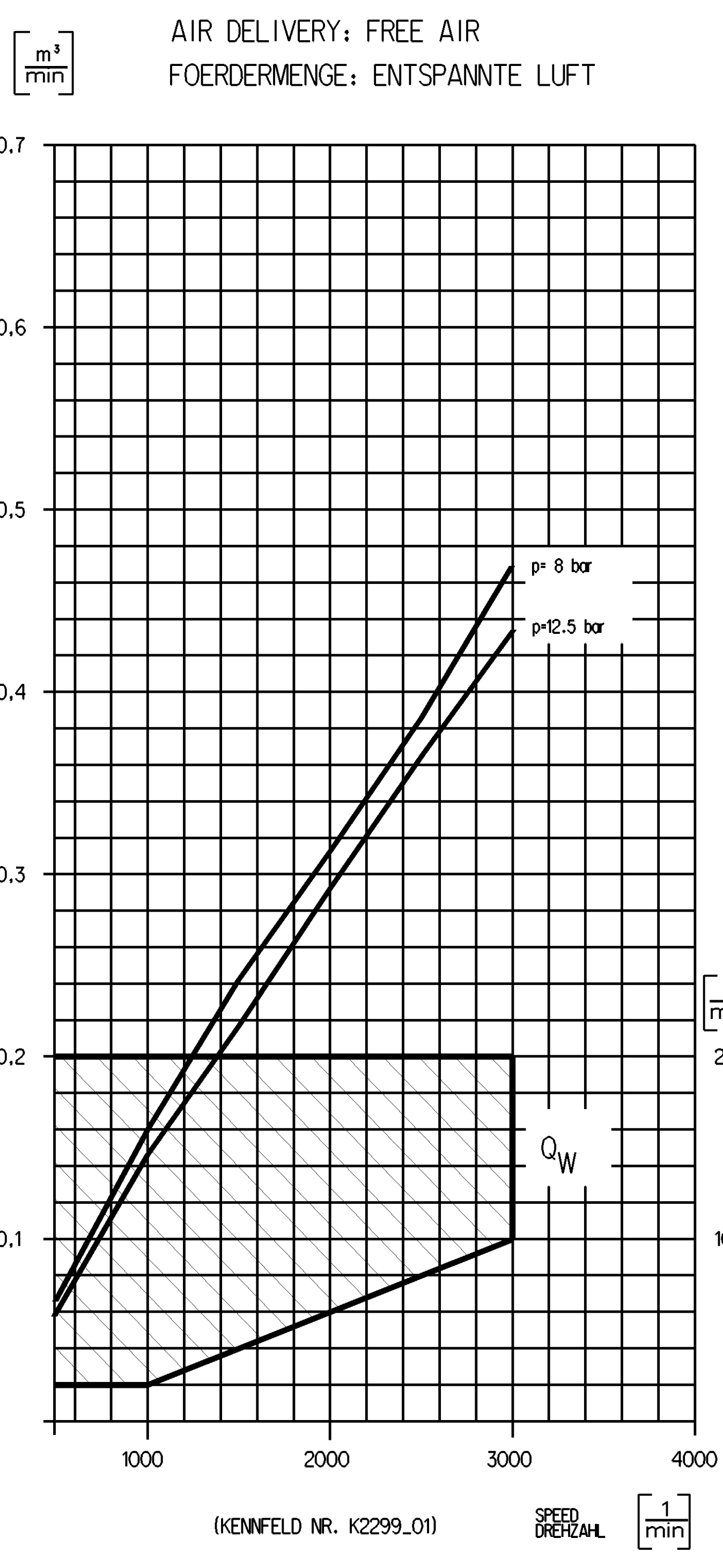


- 0 SUCTION PORT SAUGANSCHLUSS M ← 100 Nm
- 2 DISCHARGE PORT DRUCKANSCHLUSS M ← 100 Nm
- 8.1 OIL SUPPLY DRUCKOELANSCHLUSS
- 8.2 OIL DRAIN OELRUECKLAUF
- 9.1/9.2 COOLANT CONNECTION KUEHLMITTELANSCHLUSS M ← 35 Nm
- 1 MAX. THREAD ENGAGEMENT MAX. EINSCHRAUBTIEFE



WORKING MEDIUM BETRIEBSMEDIUM :	AIR LUFTE
COOLANT KUEHLMEDIUM :	WATER WITH ANTIFREEZE WASSER MIT FROSTSCHUTZ
BORE BOHRUNG :	∅ 85 mm
STROKE HUB :	42 mm
SWEPT VOLUME HUBRAUM :	238 cm ³
MAX. WORKING SPEED MAX. BETRIEBSDREHZAHL :	n _{max} = 3000 min ⁻¹
OVERSPEED (MAX. 4 SEC) UEBERDREHZAHL (MAX. 4 SEC) :	n _{ue} = 1.3 x n _{max}
MAX. WORKING PRESSURE MAX. BETRIEBSDRUCK :	p _e = 12.5 bar
MAX. PRESSURE AT PRESSPORT HOECHSTDRUCK AM DRUCKANSCHLUSS :	p _e = 16 bar
MAX. PERMISSIBLE PRESSURE TEMPERATURE IN SERVICE MAX. ZULAESSIGE DRUCKSTUTZENTEMPERATUR WAEREND DES FAHRBETRIEBES :	220 °C
END PLAY OF CRANKSHAFT AXIALSPIEL DER KURBELWELLE :	0.08 ... 0.38 mm
LUBRICATION SUPPLIED FROM ENGINE UMLAUFSCHEMIERUNG MIT DRUCKOELANSCHLUSS	
FREE FROM ASBESTOS ASBESTEINFREI	



FULL SCREEN COATED SUCTION LEAF IMPLEMENTED SINCE OCTOBER 2008.
VOLLFLAECHEIG BESCHICHTETE SAUGLAMMELLEN-DICHTUNGSEINHEIT VERBAUT SEIT OKTOBER 2008.

MAN-Nr.: 51.54101-7240

General Specifications Further Technical Data Doc. Code: 515	JED-354-0 411 151 004 0 1 To 5	Design WABCO® Date: 2018-05-15 Sheet: 1 of 1 Status: Final	WABCO SINGLE CYLINDER COMPRESSOR EINZYLINDER KOMPRESSOR
Class to: 1, 50, 180, 400, 400 Size: 0.5, 1.0, 1.5, 2.0 Course: 2.0, 3.5, 5.0, 6.5	Range of Nominal Dimensions (L x mm)	Material: Cast Iron Ratio: 1:1 Size: 8 x L CAD System: Pro/E	Working No.: 411 151 004 0 Date of 1st Issue: 005 DE 1/1 Revision: 172712 Status: 8 x L 5000 Date of 03-03-20