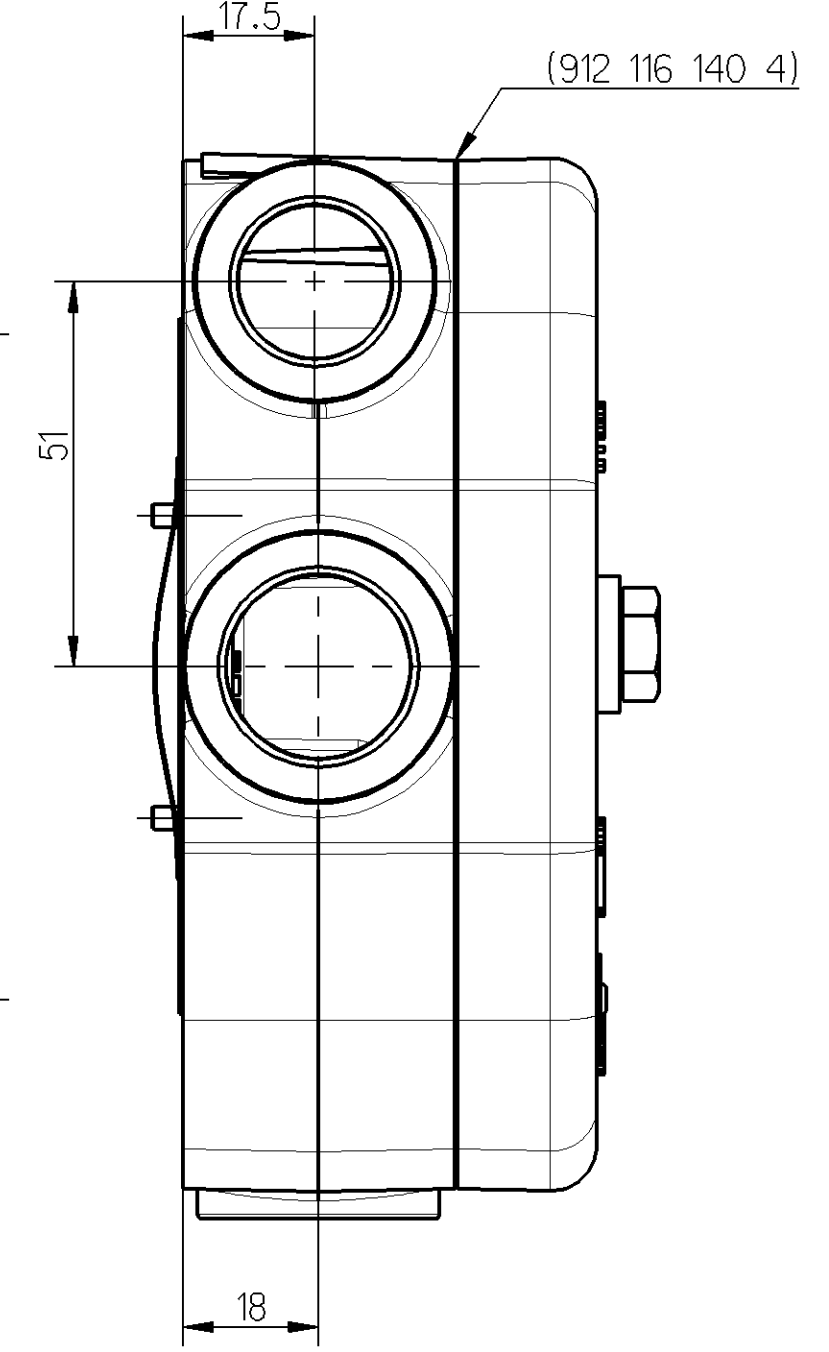
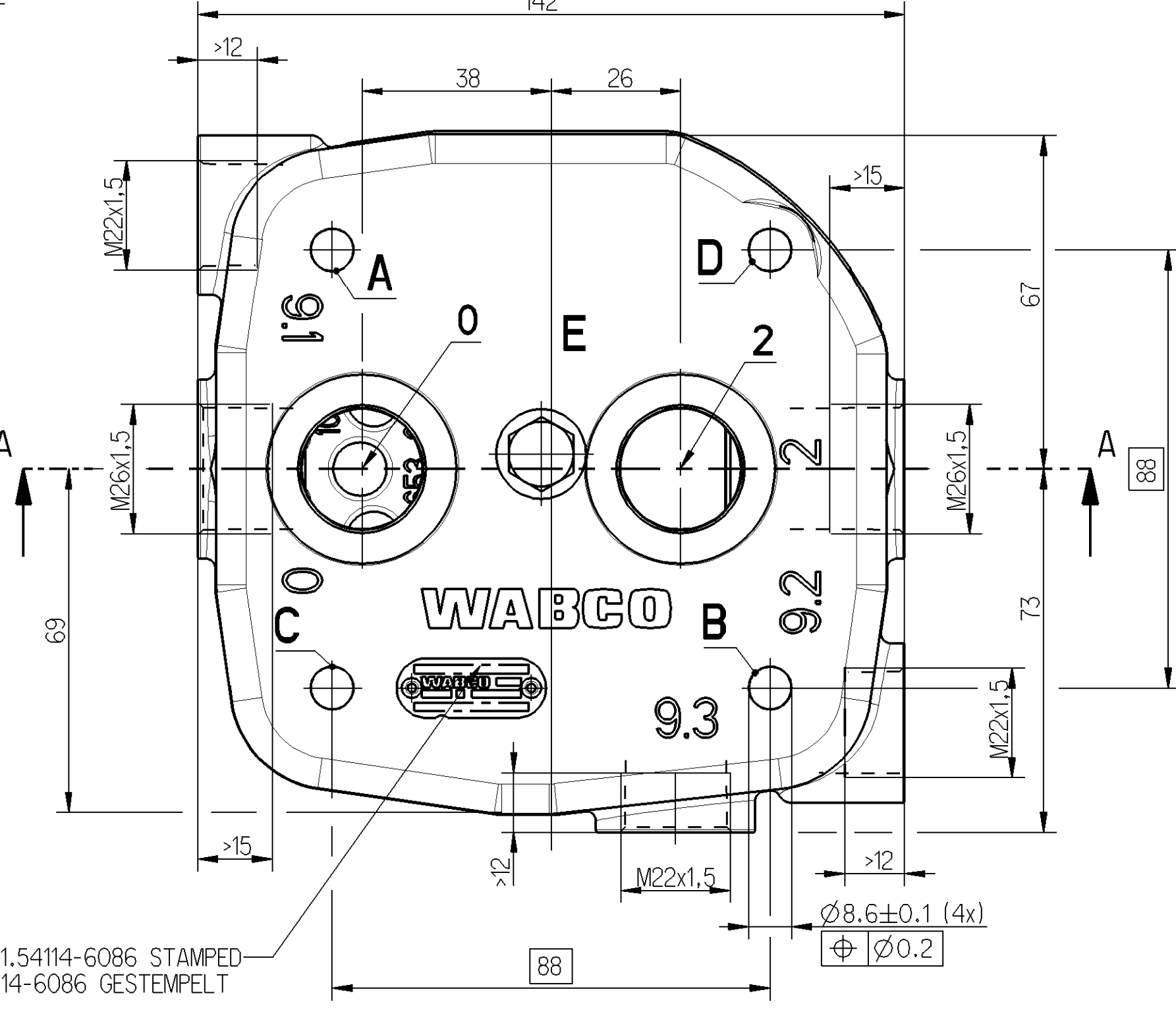
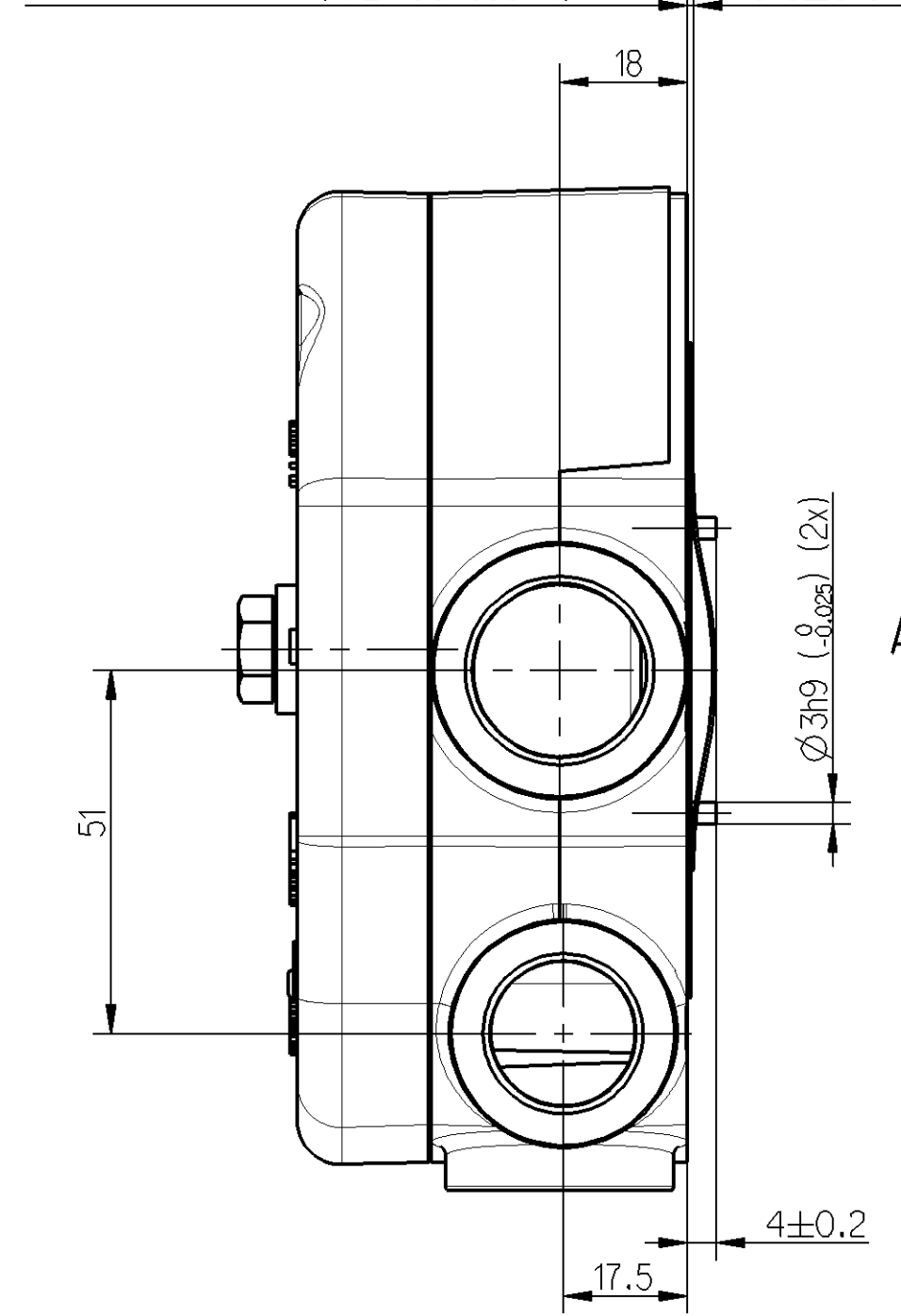
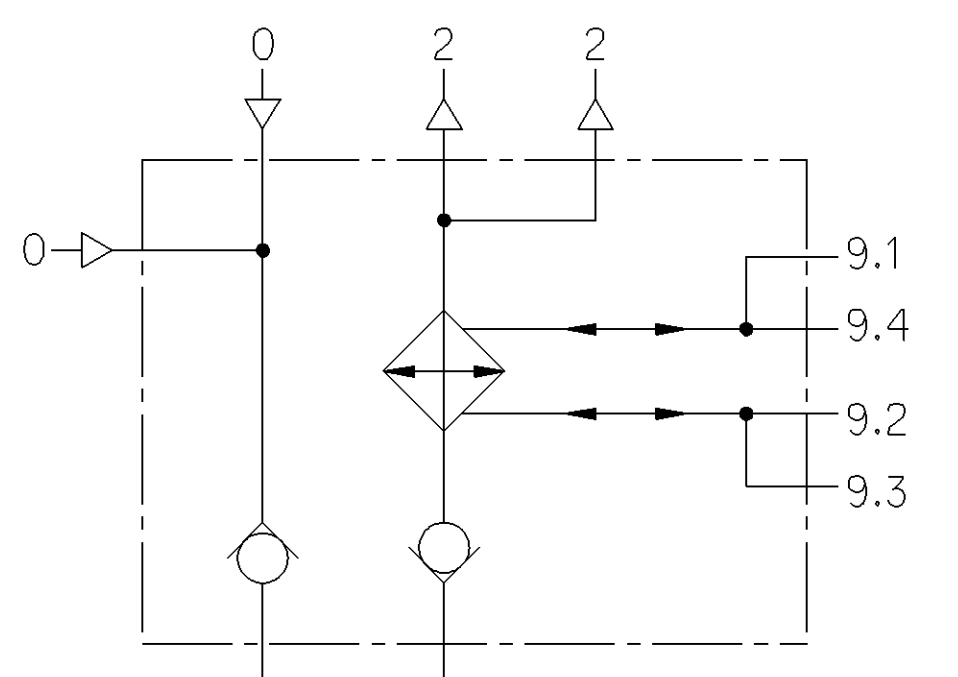
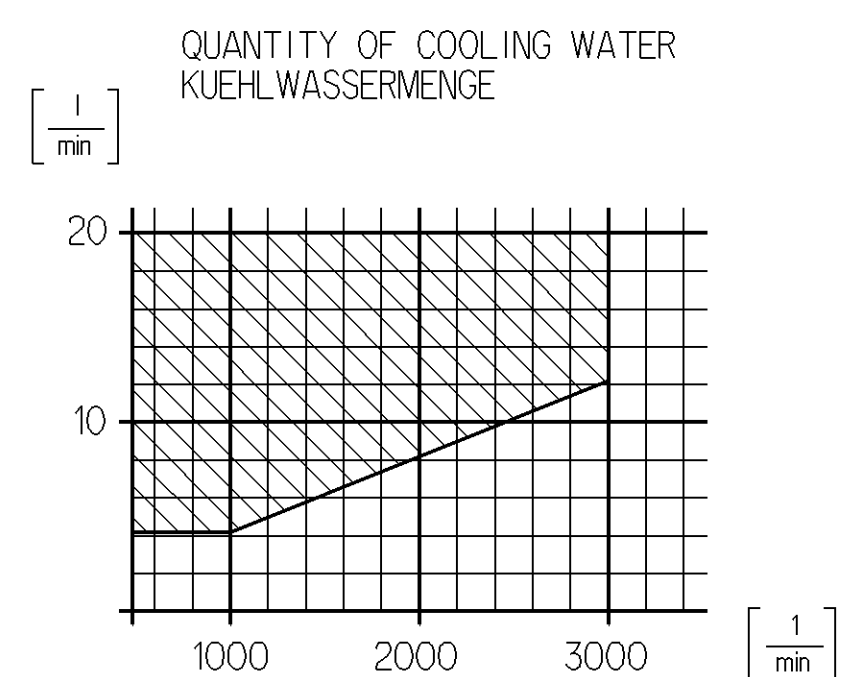
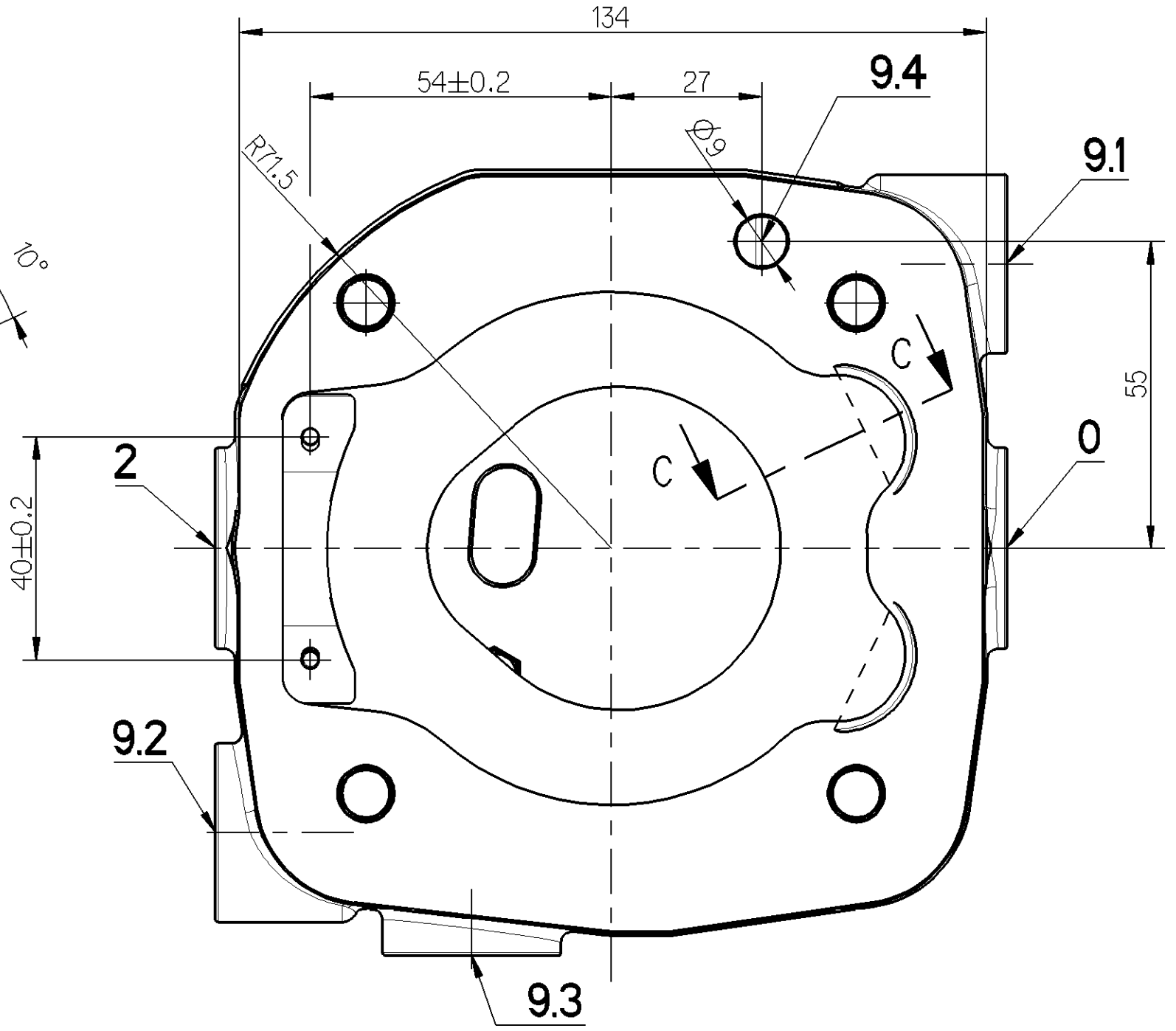
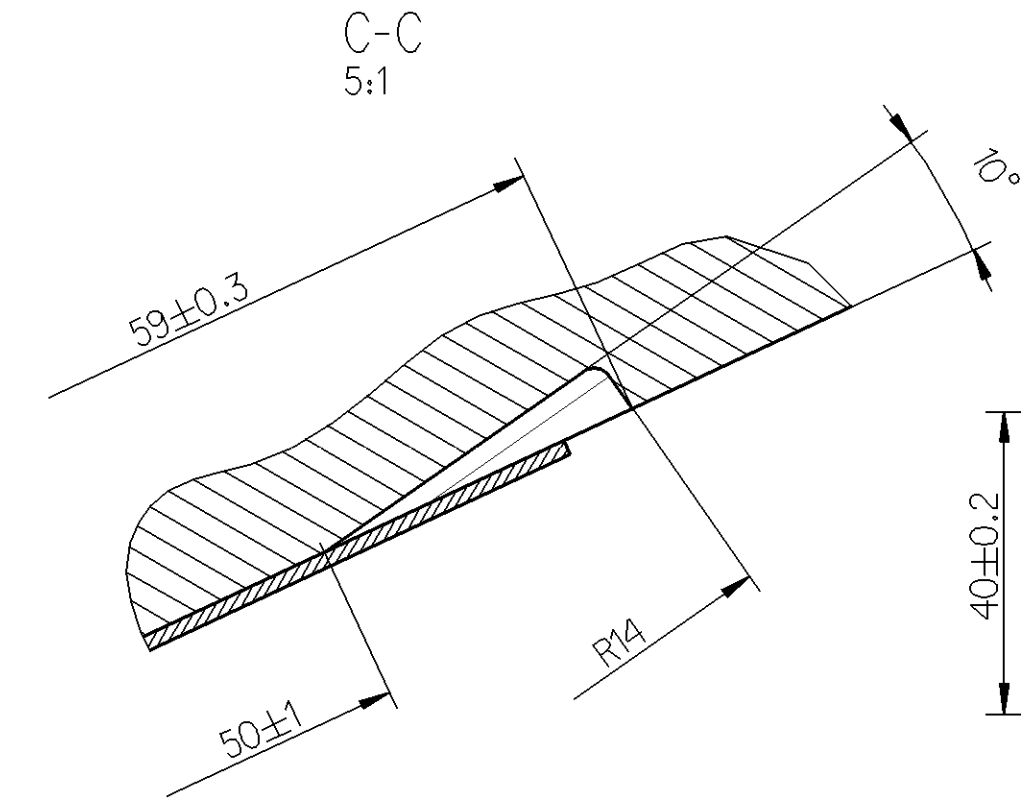


SUCTION LEAF AND CLAMPING PIECE
SAUGLAMELLE UND KLEMMSTUECK
(412 100 350 4)



CUSTOMER-NO.: 51.54114-6086 STAMPED
KUNDEN-NR.: 51.54114-6086 GESTEMPELT



INSTALLATION INSTRUCTION :
EINBAUINWEIS :
INDICATION POUR L'INSTALLATION :
INDICAZIONE DI MONTAGGIO :

- 0 SUCTION PORT
SAUGANSCHLUSS M<100Nm
ORIFICE D'ASPIRATION
ASPIRAZIONE
 - 2 DISCHARGE PORT
DRUCKANSCHLUSS M<100Nm
REFOULEMENT
ORIFICE DI MANDATA
 - 9.1 - 9.3 COOLANT CONNECTION
KUEHLMITTELANSCHLUSS M<100Nm
CONNEXION DE FLUIDE DE REFRIGERISSEMENT
COLLEGAMENTO LIQUIDO REFRIGERANTE
 - 9.4 COOLANT CONNECTION
KUEHLMITTELANSCHLUSS
CONNEXION DE FLUIDE DE REFRIGERISSEMENT
COLLEGAMENTO LIQUIDO REFRIGERANTE
- 9.1/9.4 ↔ 9.2/9.3 DIRECTION OF FLOW
DURCHSTROMRICHTUNG
SENS DE DEBIT
DIREZIONE DEL FLUSSO

Instruction for assembly / Montageanweisung

Step Schritt	Sequence Reihenfolge	Torque (Nm) Einschraubmoment	Screw angle (°) Weiterdrehwinkel
1	A, B, C, D	20 ± 2	
2	A, B, C, D		180 +10/-5
3	E	10 ± 1	
4	E		90 +10/-5

Screws / Schrauben A,B,C,D : M8-10.9 (L=180mm)

- WORKING MEDIUM : COMPRESSED AIR
BETRIEBSMEDIUM : DRUCKLUFT
FLUIDE D'UTILISATION : AIR COMPRIE
FLUIDO DI ESERCIZIO : ARIA COMPRESSA
- COOLANT : WATER
KUEHLMEDIUM : WASSER
FLUIDE DE REFRIGERISSEMENT : EAU
FLUIDO DI REFRIGERANTE : ACQUA
- BORE (CUSTOMER) :
BOHRUNG (KUNDE) : Ø 100 mm
ALESAGE (CLIENT) :
FORO (CLIENTE) :
- SWEEP VOLUME (CUSTOMER) :
HUBRAUM (KUNDE) : <= 361 cm3
CILINDREE (CLIENT) :
CILINDRATA (CLIENTE) :
- MAX. WORKING SPEED :
MAX. BETRIEBSDREHZAHL : nmax = 3000 min-1
VITESSE D'UTILISATION MAXI. :
VELOCITA' DI ROTAZIONE MAX. :
nue = 1.3 x nmax
- OVERSPEED (MAX. 4 SEC.) :
UEBERDREHZAHL (MAX. 4 SEC.) :
SURVITESSE (MAXI. 4 SEC.) :
SOVRAVELOCITA (MAX. 4 SEC.) :
- MAX. WORKING PRESSURE :
MAX. BETRIEBSDRUCK : 12.5 bar
PRESSION D'UTILISATION MAXI. :
PRESSIONE DI ESERCIZIO MAX. :
- MAX. COOLING WATER PRESSURE :
MAX. KUEHLWASSERDRUCK : 2 bar
PRESSION D'EAU MAXI. :
PRESSIONE D'ACQUA MAX. :
- MAX. PERMISSIBLE TEMPERATURE AT DISCHARGE PORT :
MAX. ZULASSIGE DRUCKSTUTZENTEMPERATUR : 220 °C
TEMPERATURE MAXI. ADMISSIBLE REFOULEMENT :
TEMPERATURA MAX. AMMISSIBILE ORIFICE DI MANDATA :

(...) AUXILIARY DIMENSION
=HILFSSMASS
DIMENSION AUXILIAIRE
DIMENSIONE AUSILIARIA

General Specifications: JED-334-0		Copyright WABCO®		WABCO	
Further Technical Data: 912 100 806 2		Date: 2010-03-10	Signature: Hecht	CYLINDER HEAD ZYLINDERKOPF	
Doc. Code: 035	Sheet: 1 To: 3	Drawn: 2010-03-10	Checked: 2010-03-10	Expert: Slumberg	
General Tolerances JED-261					
Range of Nominal Dimensions (± mm)					
Class	1)	≤ 50	> 50 ≤ 180	> 180 ≤ 400	> 400
Fine		0.5	1.0	1.5	2.0
Medium		1.0	2.0	3.0	4.0
Coarse		2.0	3.5	5.0	6.5
Tapped Holes acc. 1) Tolerance Class Applied Crossmarked					
Mass	Scale	Material No. 412 100 806 2		Date of first issue: 2010-03-10	
1.458 kg	1:1	Doc. Code: 005	Language: DE	Sheet: 1/1	
Size: A 1	Pro/E	ECN No.:	Revision: A	Techn. Resp.:	Replacement for: 412 100 805 2

Non e' permesso copiare o riprodurre questo documento, ne utilizzare il contenuto o renderlo comunque noto a terzi.
 Toute communication ou reproduction de ce document, toute exploitation ou communication de son contenu sont interdites, sauf
 autorisation expresse de WABCO. Toute utilisation non autorisee sera poursuivie judiciairement par WABCO.
 Copying of this document and giving it to others and the use or communication of its contents, hence, are forbidden without express
 authority. Communication of this position will constitute an offence under the patent law of the country of origin. All rights
 reserved for the owner of the patent or patents in respect of the subject matter of this document. This document is the property of WABCO.
 Weitergabe sowie Vervielfaechtigung, Verbreitung und Mitteilung dieses Dokuments ist ohne schriftliche Genehmigung WABCO
 nicht gestattet. Verbreitung dieses Dokuments ohne schriftliche Genehmigung WABCO ist strafbar.
 All rights reserved for the owner of the patent or patents in respect of the subject matter of this document. This document is the property of WABCO.