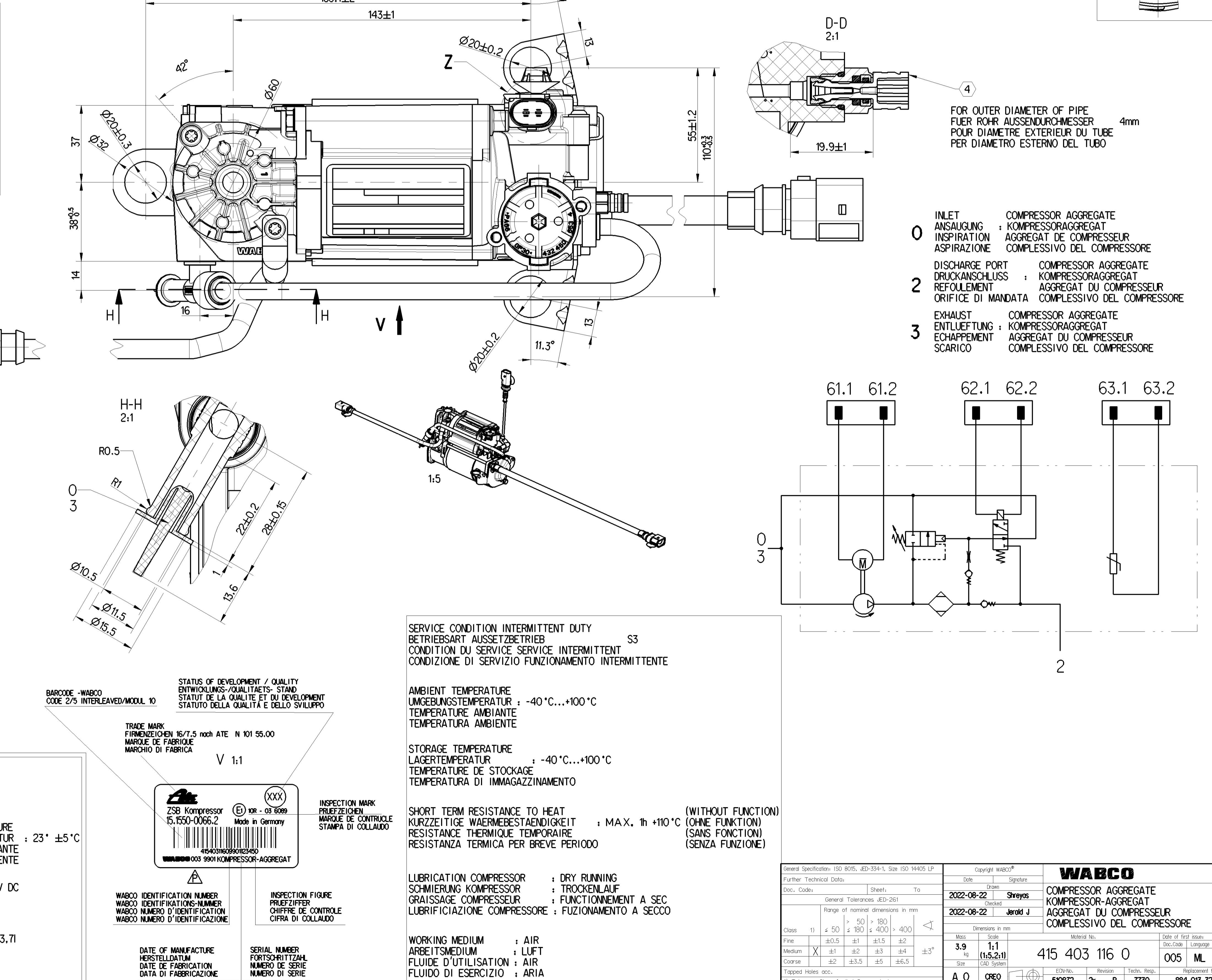
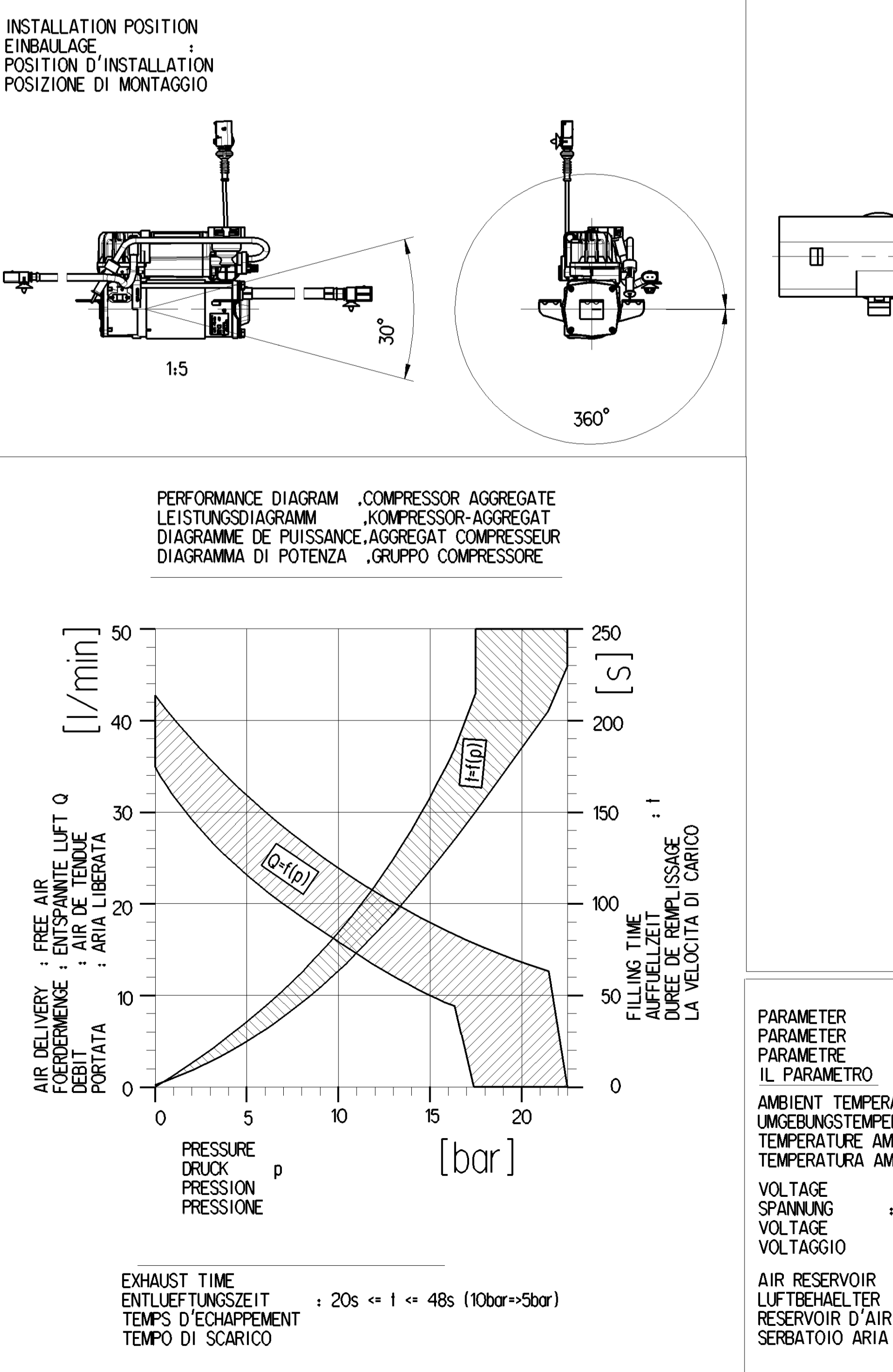


TECHNICAL DATA TECHNISCHE DATEN CARACTERISTIQUES TECHNIQUES CARATTERISTICHE TECNICHE	COMPRESSOR KOMPRESSOR COMPRESSEUR COMPRESSORE	SOLENOID VENTILMAGNET ELETTROMAGNETE	TEMPERATURE SENSOR TEMPERATURSENSOR CAPTEUR DE TEMPERATURE SENSORE DELLA TEMPERATURA
TYPE OF CURRENT STROMART NATURE DU COURANT NATURA DELLA CORRENTE	DIRECT CURRENT GLEICHSTROM COURANT CONTINU CORRENTE CONTINUA	DIRECT CURRENT GLEICHSTROM COURANT CONTINU CORRENTE CONTINUA	DIRECT CURRENT GLEICHSTROM COURANT CONTINU CORRENTE CONTINUA
OPERATING VOLTAGE BETRIEBSSPANNUNG TENSION DE SERVICE TENSIONE DI SERVIZIO	9...16V	9...16V	4.875...5.125V
NOMINAL VOLTAGE NENNSPANNUNG TENSION NOMINALE TENSIONE NOMINALE	12V	12V	5V
RATED CURRENT NENNSTROM COURANT NOMINAL CORRENTE NOMINALE	-	I = 0.75A I >= 390mA I <= 470mA PEAK AND HOLD	-
MAXIMAL CURRENT INTENSITY MAXIMALE STROMSTARKE INTENSITE MAXIMAL DU COURANT INTENSITA MASSIMA DELLA CORRENTE	(U=12V; t=23±5°C; p=10bar)	35A	0.8A
DEGREE OF PROTECTION ACCORDING TO IEC 529 SCHUTZART NACH IEC 529 DEGRE DE PROTECTION SUIVANT IEC 529 GRADO DI PROTEZIONE SECONDO IEC 529	IP68	IP68	IP68
DEGREE OF PROTECTION ACCORDING TO DIN 40050 SCHUTZART NACH DIN 40050 DEGRE DE PROTECTION SUIVANT DIN 40050 GRADO DI PROTEZIONE SECONDO DIN 40050	IP6K7 IP6K6	IP6K7 IP6K6	IP6K7 IP6K6
DUTY CYCLE EINSCHALTDAUER DUREE DE FONCTIONNEMENT CICLO DI LAVORO	15% ED / 10min (t=23±5°C) 5% ED / 10min (t=80±5°C) 3% ED / 10min (t=100±5°C)	33.3% ED / 5min (t=-40...+80°C) 100% ED (t=-40...+100°C) PEAK AND HOLD	100% ED
DYNAMIC PRESSURE LIMITING DYNAMISCHE DRUCKBEGRENZUNG LIMITATION DE PRESSION DYNAMIQUE LIMITAZIONE DI PRESSIONE DINAMICO	17.5 ±0.5 bar	-	-
RESIDUAL PRESSURE RUECKHALTDRUCK PRESSION DE RETENUE PRESSIONE DI RITENUTA	1 ±0.5 bar	-	-
OHMIC RESISTANCE OHMSCHER WIDERSTAND RESISTANCE OHM RESISTENZA OHM	-	-	0.297kΩ bei +140°C 1.084kΩ bei +90°C 10.47kΩ bei +25°C 301.5kΩ bei -40°C
MEASURING RANGE MESSBEREICH ZONE DE MESURE CAMPO DI MISURA	-	-	-40°C ... +140°C
THERMO COUPLE THERMOELEMENT COUPLE THERMOELECTRIQUE COPPIA TERMOELETTRICA	-	-	NTC-THERMISTOR NTC-THERMISTOR NTC-THERMISTANCE NTC-TERMISTORE



General Specifications ISO 8015, ISO 534-1, Size ISO 14405 LP		Copyright WABCO		WABCO	
Doc. Code	General Tolerances ISO 2013	Sheet	To	Date	Version
2022-08-22		1	1	2022-08-22	Stryas
Class	Range of nominal dimensions in mm	Material No.	Material No.	Doc. Code	Language
Medium	3.9	415 403 116 0	005 ML 1/1	005 ML 1/1	
Control	3.9	415 403 116 0	005 ML 1/1	005 ML 1/1	
Tapped Holes acc.		Tapped Holes acc.		Tapped Holes acc.	
A 0		00078		884 018 328 0	