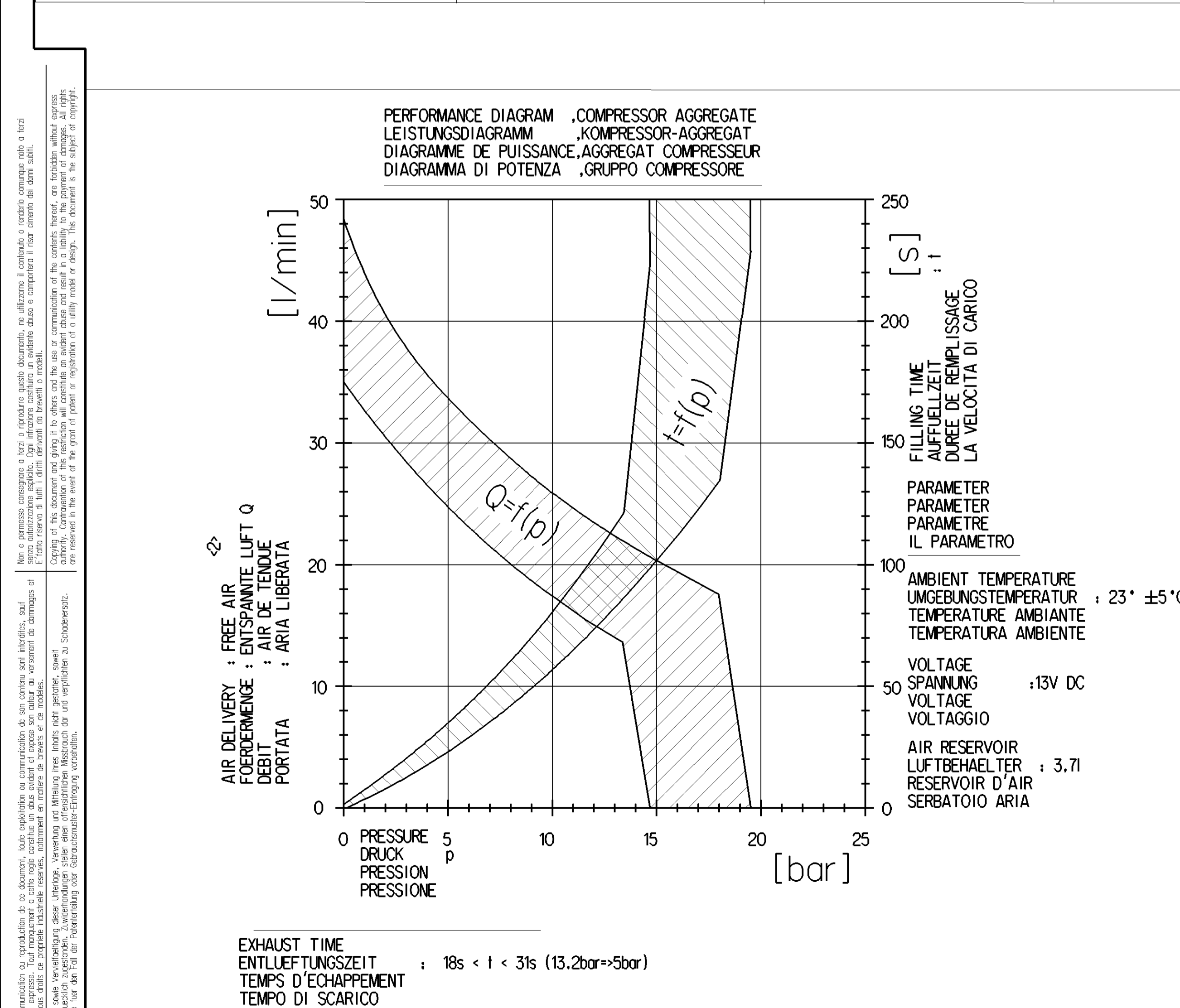
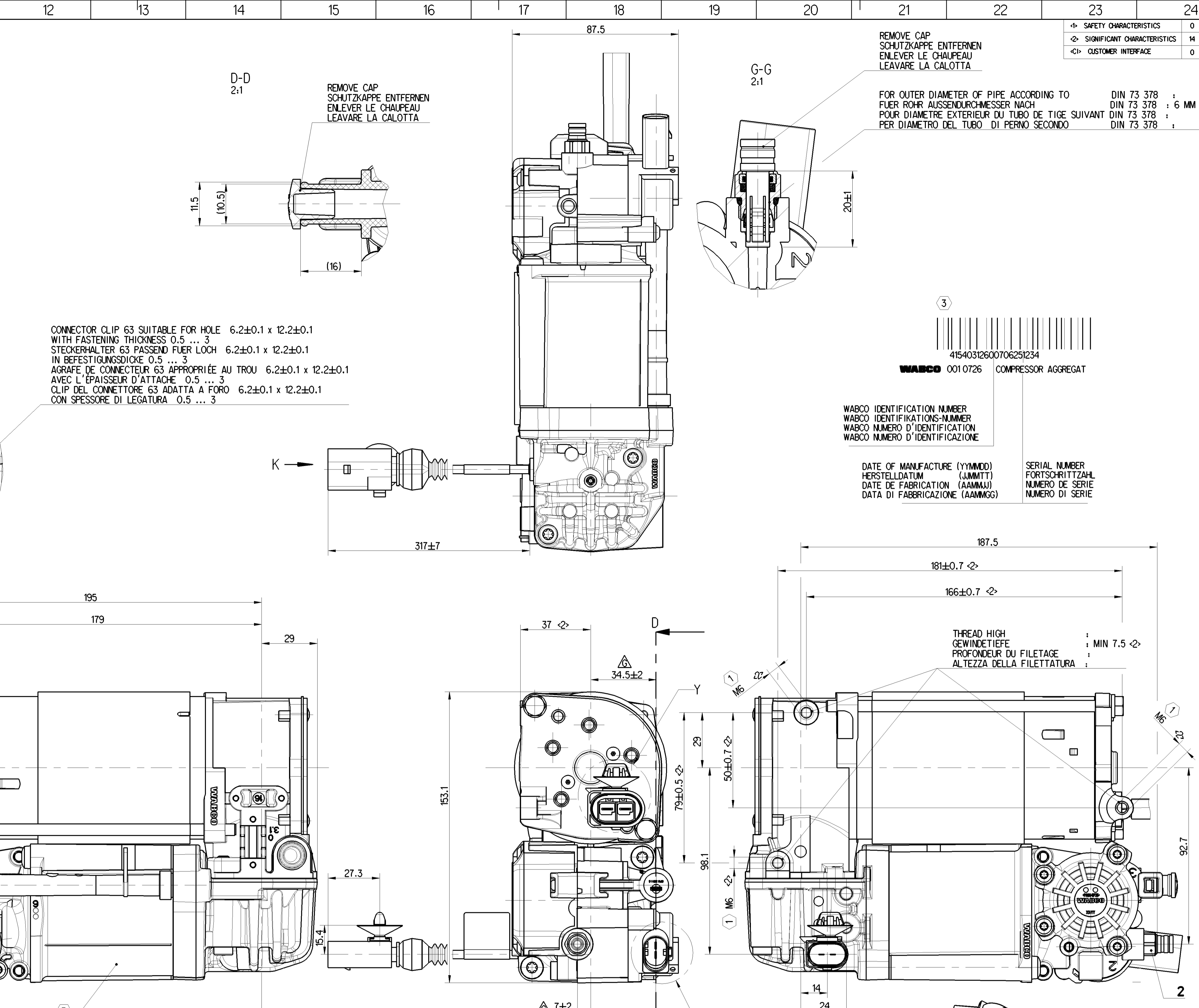


TECHNICAL DATA TECHNISCHE DATEN CARATTERISTICHE TECNICHE CARACTERISTIQUES TECHNIQUES		COMPRESSOR KOMPRESSOR COMPRESSORE	SOLENOID VALVE VENTILMAGNET AIMANT ELETTROMAGNETE	TEMPERATURE SENSOR TEMPERATURSENSOR SONDE DE TEMPERATURE SONDE DI TEMPERATURA
A	TYPE OF CURRENT STROMART NATURE DU COURANT NATURA DELLA CORRENTE	DIRECT CURRENT GLEICHSTROM COURANT CONTINU CORRENTE CONTINUA	DIRECT CURRENT GLEICHSTROM COURANT CONTINU CORRENTE CONTINUA	DIRECT CURRENT GLEICHSTROM COURANT CONTINU CORRENTE CONTINUA
B	OPERATING VOLTAGE BETRIEBSSPANUNG TENSIONE DI SERVIZIO TENSIONE DI SERVIZIO	9...16V	9...16V	$U_b + 5 \pm 0.125 \text{ V}$
C	NOMINAL VOLTAGE NENNSPANUNG TENSIONE NOMINALE TENSIONE NOMINALE	12V	12V	$U_N + 5 \text{ V}$
D	RATED CURRENT NENNSTROM COURANT NOMINAL CORRENTE NOMINALE		$I_n = 0.75 \text{ A}$ $I_{est} \leq 390 \text{ mA}$ $I_p \leq 470 \text{ mA}$ PEAK AND HOLD	---
E	MAXIMAL CURRENT INTENSITY MAXIMALE STROMSTARKE INTENSITA' MASSIMA DELLA CORRENTE INTENSITA' MASSIMA DELLA CORRENTE	35A (U=13V; I=23±5°C; p=13.2bar)	0.8A	---
F	DEGREE OF PROTECTION ACCORDING TO ISO 20663 SCHUTZART NACH ISO 20663 DEGRE DE PROTECTION SUIVANT ISO 20663 GRADO DI PROTEZIONE SECONDO ISO 20663	IP6K7 IP6K7	IP6K7 IP6K7	IP6K7
G	DUTY CYCLE EINSCHALTDAUER DUREE DE FONCTIONNEMENT CICLO DI LAVORO	(U=13V) p = 10 bar 10% ED / 10min (1-23°C) 7% ED / 10min (1-55°C) 5% ED / 10min (1-80°C) 3% ED / 10min (1-100°C)	33.3% ED / 5min (1-40...+80°C) 100% ED (1-40...+100°C) PEAK AND HOLD	100 % ED
H	DYNAMIC PRESSURE LIMITING DYNAMISCHE DRUCKBEGRENZUNG LIMITATION DE PRESSION DYNAMIQUE LIMITAZIONE DI PRESSIONE DINAMICO	14.7 ±0.8 BAR (1-23±5°C) \leq	---	---
I	RESIDUAL PRESSURE RUECKHALTEDRUCK PRESSION DE RETENUE PRESSIONE DI RITENUTA	1.5 ±1 BAR (1-23±5°C) \leq	---	---
J	OPERATING PRESSURE BETRIEBSDRUCK PRESSION DE SERVIZIO PRESSIONE DI SERVIZIO	± 13.2 BAR	---	---
K	MAX. PERMISSIBLE PRESSURE IN CONNECTION 2 AT COMPRESSOR START-UP MAX. ZULASSIGER DRUCK IN ANSCHLUSS 2 A COMPRESSORANLAUF MAX. PRESSION AMMISSIBILE A RACCORDAMENTO 2 A COMPRESSUR MISE EN TRAIN MAX. PRESSIONE AMMISSIBILE EL COLLEGAMENTO 2 A COMPRESSORE START-UP	RESIDUAL PRESSURE RUECKHALTEDRUCK PRESSION DE RETENUE PRESSIONE DI RITENUTA 2.5 BAR	---	---
L	OHMIC RESISTANCE OHMSCHER WIDERSTAND RESISTANCE OHM RESISTENZA OHM	---	---	0.48k $\pm 120^\circ\text{C}$ 1.084k $\pm 90^\circ\text{C}$ 12.65k $\pm 20^\circ\text{C}$ 264.93k $\pm 40^\circ\text{C}$
M	MEASURING RANGE MESSBEREICH ZONE DE MESURE CAMPO DI MISURA	---	---	-40°C ... +140°C
N	THERMO COUPLE THERMOELEMENT COUPLE THERMOELECTRIQUE COPPIA TERMOELETTTRICA	---	---	NTC-THERMISTOR NTC-THERMISTOR NTC-THERMISTANCE NTC-THERMISTORE
O	AMBIENT TEMPERATURE UMGEBUNGSTEMPERATUR TEMPERATURE AMBIANTE TEMPERATURA AMBIENTE	-40°C...+100°C	-40°C...+100°C	-40°C...+100°C
P	STORAGE TEMPERATURE LAGERTEMPORATUR TEMPERATURE DE STOCKAGE TEMPERATURA DI IMMAGAZZINAMENTO	-40°C...+100°C	-40°C...+100°C	-40°C...+100°C
Q	SHORT TERM RESISTANCE TO HEAT KURZZEITIGE WÄRMESTANDIGKEIT RESISTANCE THERMIQUE TEMPOIRE RESISTANZA TERMICA PER BREVE PERIODO	MAX. $t_h + 110^\circ\text{C}$ (WITHOUT FUNCTION) (OHNE FUNKTION) (SANS FONCTION) (SENZA FUNZIONE)	MAX. $t_h + 110^\circ\text{C}$ (WITHOUT FUNCTION) (OHNE FUNKTION) (SANS FONCTION) (SENZA FUNZIONE)	MAX. $t_h + 110^\circ\text{C}$ (WITHOUT FUNCTION) (OHNE FUNKTION) (SANS FONCTION) (SENZA FUNZIONE)
R	LUBRICATION COMPRESSOR SCHMIERUNG KOMPRESSOR GRAISSAGE COMPRESSEUR LUBRIFICAZIONE COMPRESSORE	DRY RUNNING TROCKENLAUF FUNCTIONNEMENT A SEC FUZIONAMENTO A SECCO	---	---

WORKING MEDIUM : AIR
ARBEITSMEDIUM : LUFT
FLUIDE D'UTILISATION : AIR
FLUIDO DI ESERCIZIO : ARIA

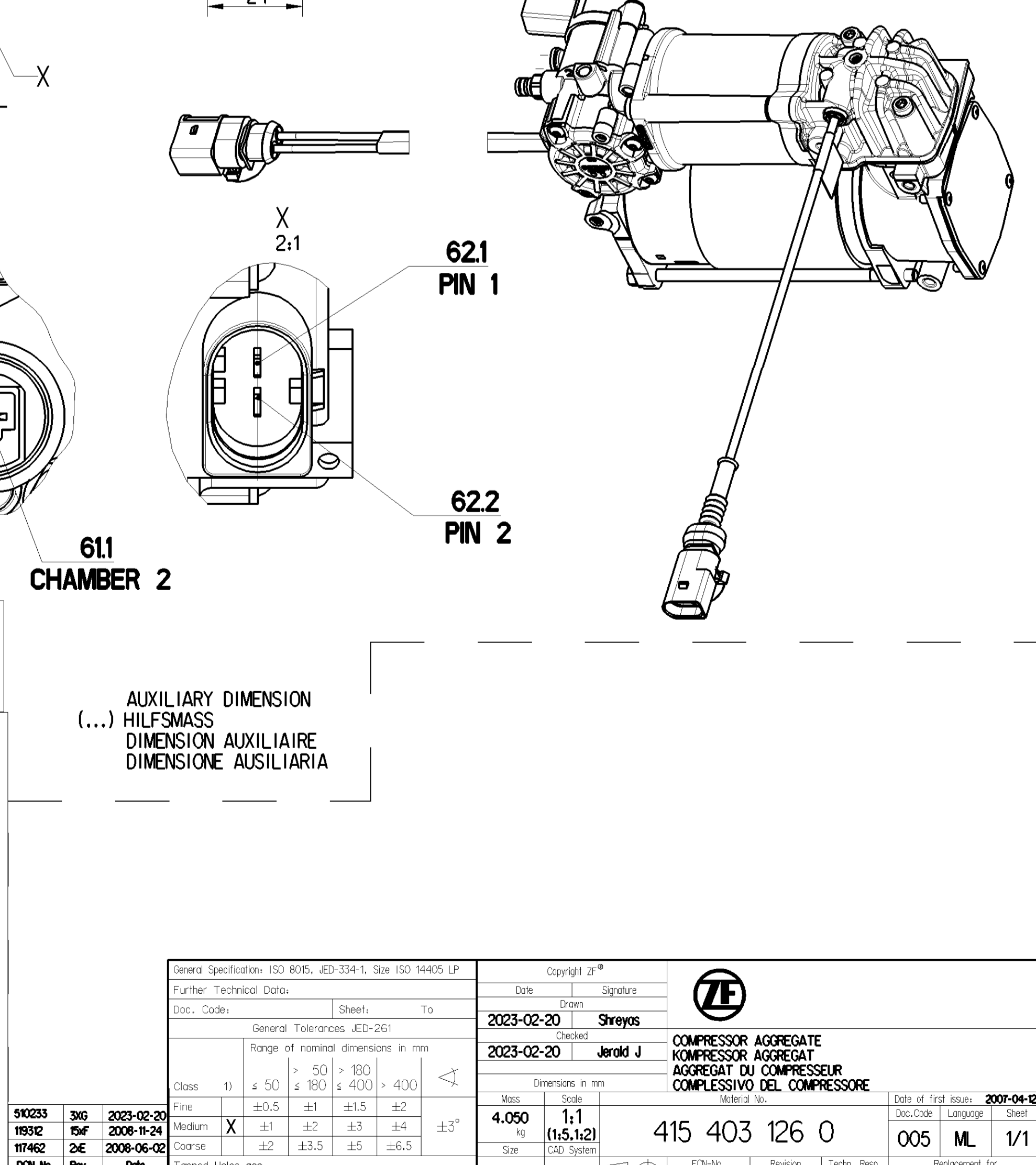
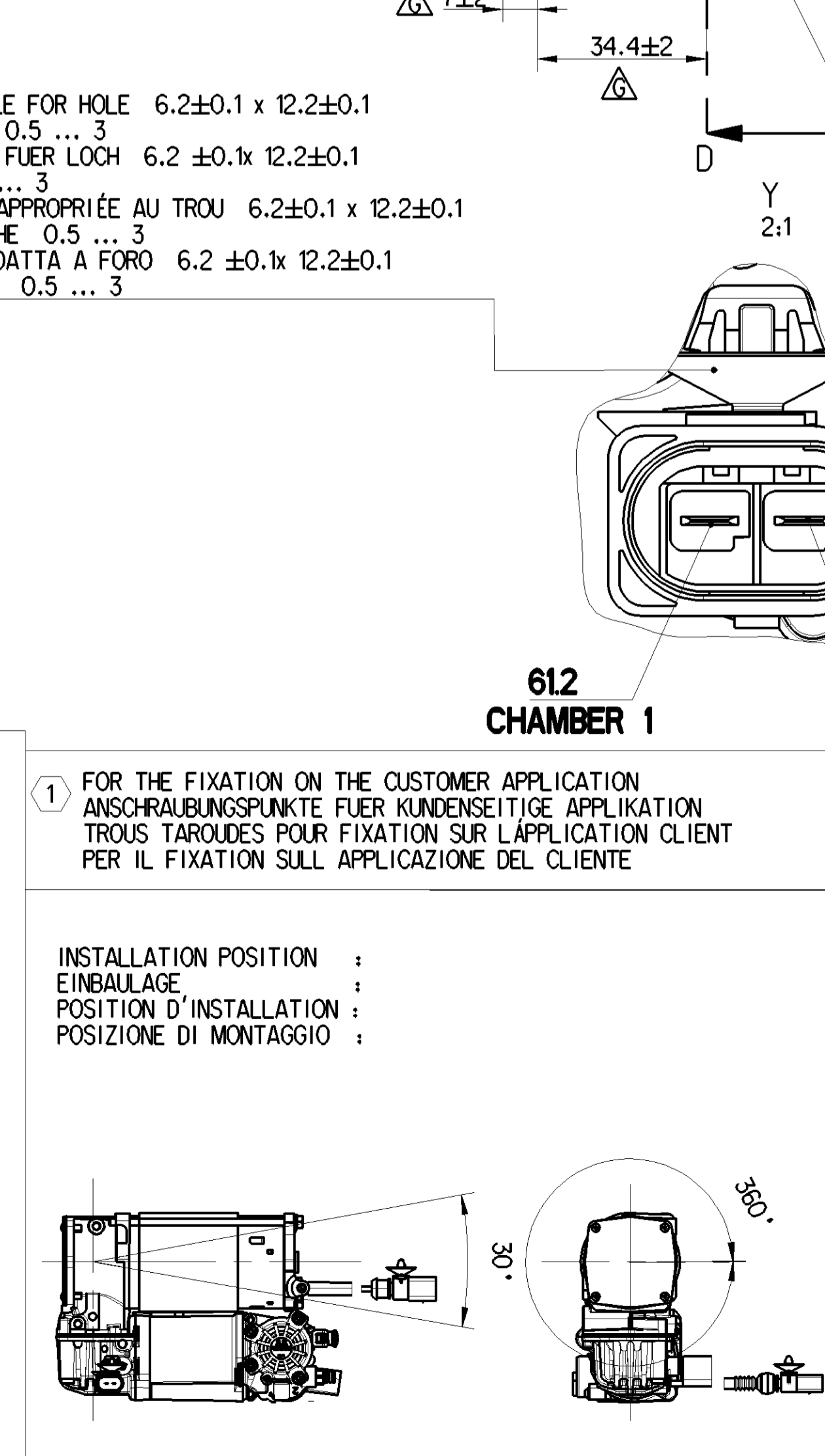
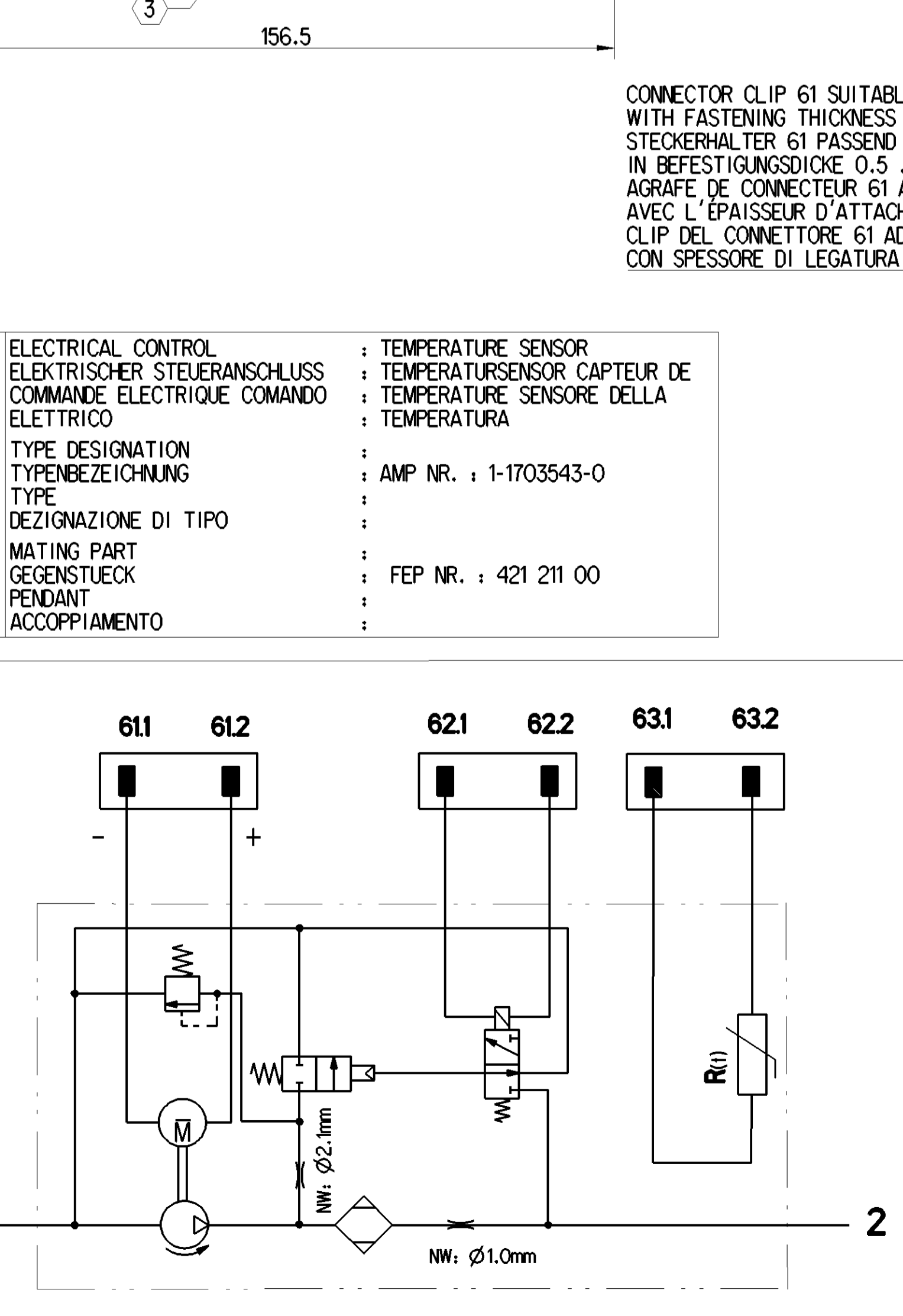
SERVICE CONDITION INTERMITTENT DUTY
BETRIEBSART AUSSETZBETRIEB
CONDITION DU SERVICE SERVICE INTERMITTENT
CONDIZIONE DI SERVIZIO FUNZIONAMENTO INTERMITTENTE

② CONNECTOR SYSTEM ACCORDING TO CUSTOMER SPECIFICATION
WABCO DOES NOT PROVIDE ANY WARRANTY RELATING TO CONNECTOR-SYSTEM DEFECTS
STECKSYSTEM NACH KUNDENANGABEN
FUER MANGEL AM STECKSYSTEM KEINE GEWAHRLEISTUNG DURCH WABCO
SYSTEME DE CONNECTEURS SUIVANT SPECIFICATION DU CLIENT
WABCO NE FOURNIT AUCUNE GARANTIE RELATIVE AUX DEFAGTS DANS LE SYSTEME DE CONNECTEURS
SISTEMA DI CONNETTORI SECONDO SPECIFICA DEL CLIENTE
WABCO NON FORNISCE NESSUNA GARAZIA SULLE DIFETTI DI SISTEMA DI CONNETTORI



TEST GEMÄß IEC 60068-2-11 SS BEI EINER DAUER VON 400 STUNDEN
TEST ACCORDING TO IEC 60068-2-11 SS WITH DURATION OF 400 HOURS
SELON IEC 60068-2-11 SS JUSQU'À UNE DURÉE DE 400 HEURES
IL COLLAUDO ADEGUATO IEC 60068-2-11 SS DURATA DI 400 DILAZIONARE

PORT	COMPRESSOR AGGREGAT	TEMPERATURE SENSOR
0	INLET ANSAUGUNG ASPIRAZIONE	ELECTRICAL CONTROL ELEKTRISCHER STEUERANSCHLUSS
2	COMPRESSED AIR PORT DRUCKANSCHLUSS	ASPIRATION ASPIRATION
3	EXHAUST ENTLUEFTUNG	AGGREGAT DU COMPRESSEUR
61	ELECTRICAL CONTROL PORT ELEKTRISCHER STEUERANSCHLUSS	COMPRESSOR AGGREGAT
61.1	Earth connection (Terminal Station 31) MASSEANSCHLUSS (KLEMME 31)	AGGREGAT DU COMPRESSEUR
61.2	CONNECTION PLUS (Terminal Station 30) ANSCHLUSS PLUS (KLEMME 30)	COMPRESSIV DEL COMPRESSEUR
62	ELECTRICAL CONTROL ELEKTRISCHER STEUERANSCHLUSS	COMPRESSOR AGGREGAT



Doc. Code	General Information	Sheet	To	Date	Version
2023-02-20	2023-02-20	1	Shreyas	2023-02-20	01
2023-02-20	2023-02-20	1	Shreyas	2023-02-20	01
2023-02-20	2023-02-20	1	Shreyas	2023-02-20	01
2023-02-20	2023-02-20	1	Shreyas	2023-02-20	01

General Specifications ISO 8015, ISO 9001, ISO 14001:2015

Further Technical Data

Doc. Code: 2023-02-20

Sheet: 1 of 1

To: Shreyas

Date: 2023-02-20

Version: 01

Copyright © 2023

COMPRESSOR AGGREGAT

KOMPRESSOR-AGGREGAT

AGGREGAT DU COMPRESSEUR

AGGREGAT DEL COMPRESSEUR

Range of nominal dimensions in mm

Dimension	H1	H2	H3	H4	H5
Class 1	±0.1	±0.2	±0.3	±0.4	±0.5
Class 2	±0.15	±0.25	±0.35	±0.45	±0.55
Class 3	±0.2	±0.3	±0.4	±0.5	±0.6
Class 4	±0.25	±0.35	±0.45	±0.55	±0.65

Scale: 1:1 (1:0.5, 1:1, 1:1.5, 1:2)

415 403 126 0

005 ML 1/1

Scale of Revision

Tapped Holes acc.

Tolerance class: 12/13/14/15/16/17/18/19/20

5/20333

3r G 1730