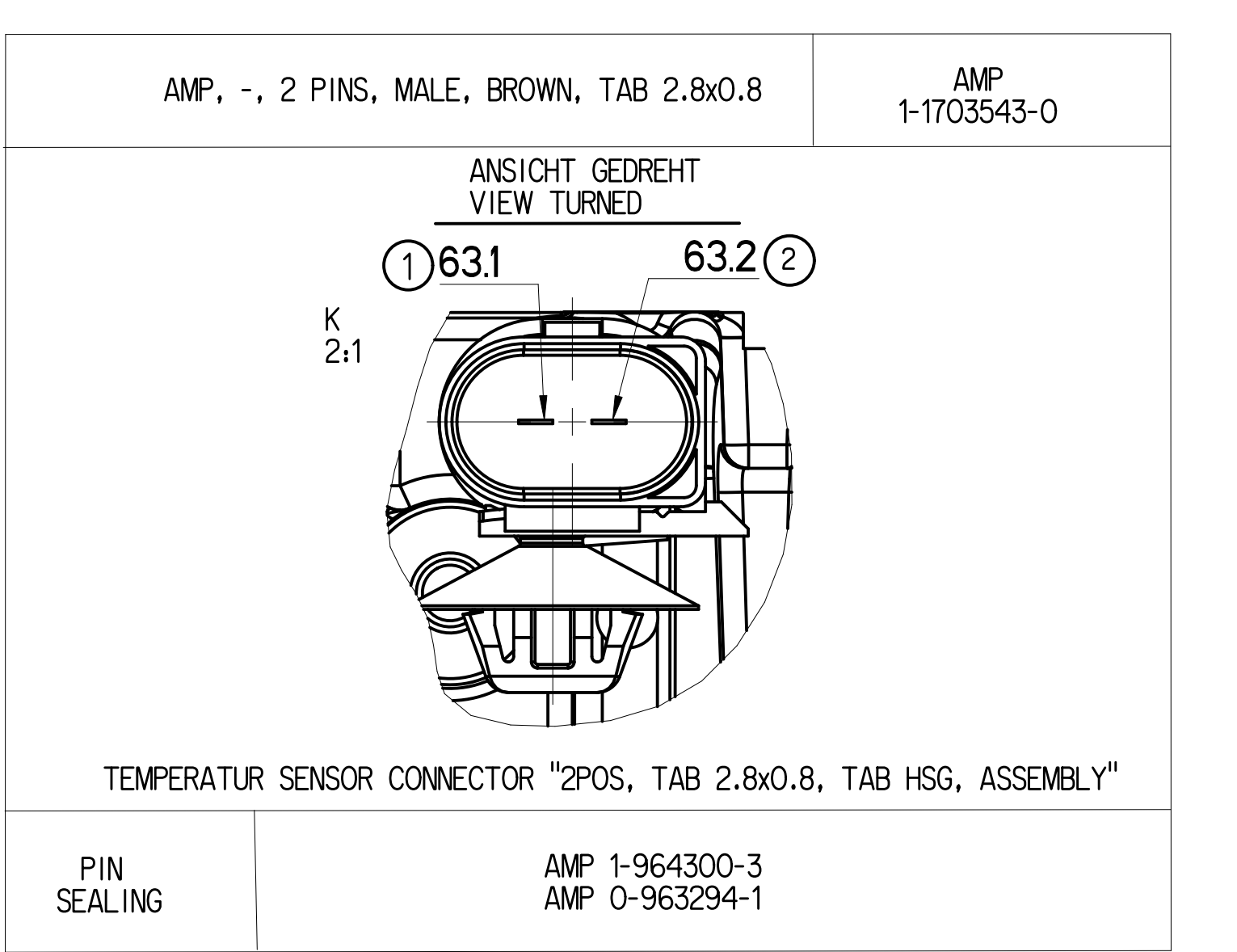
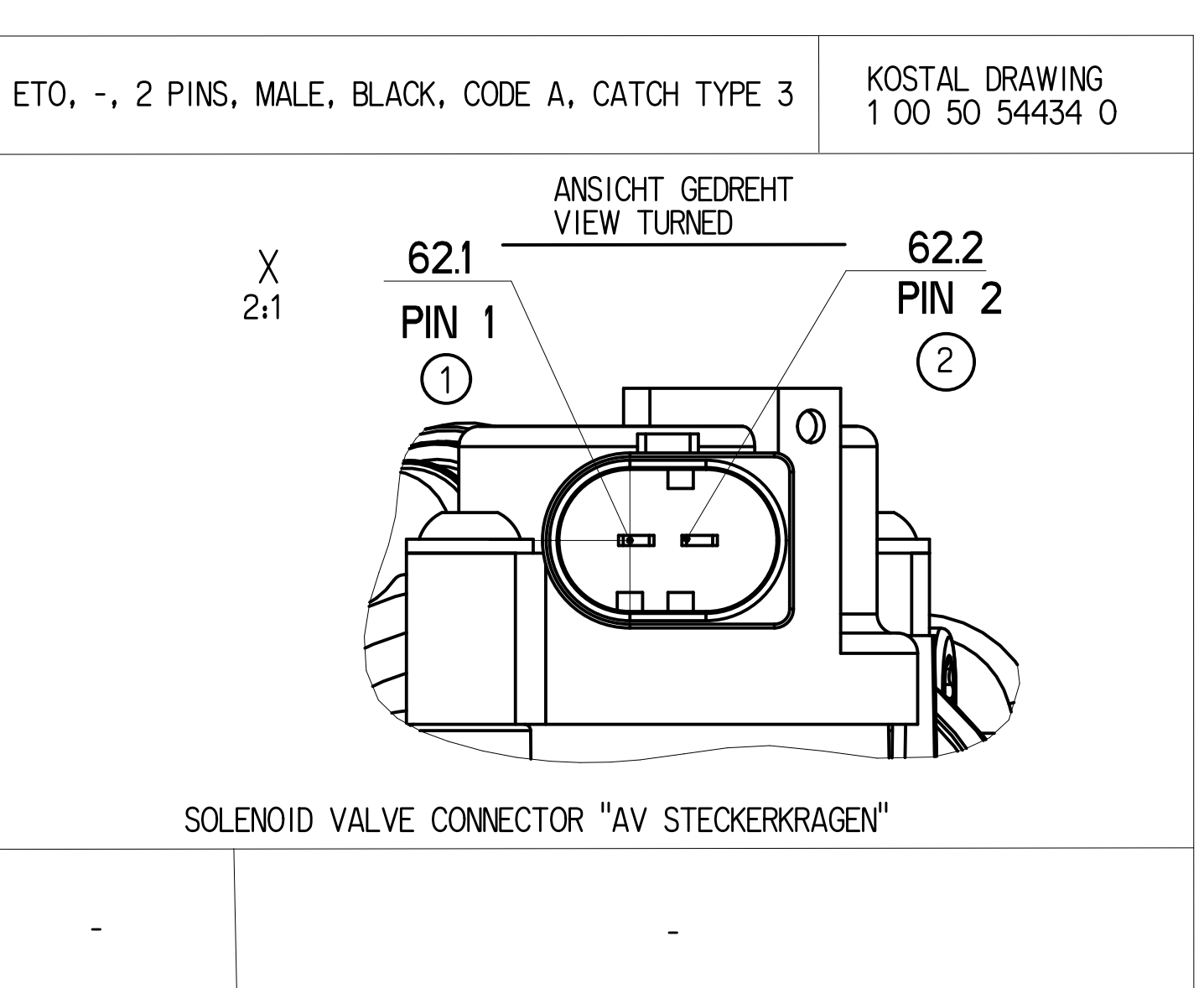
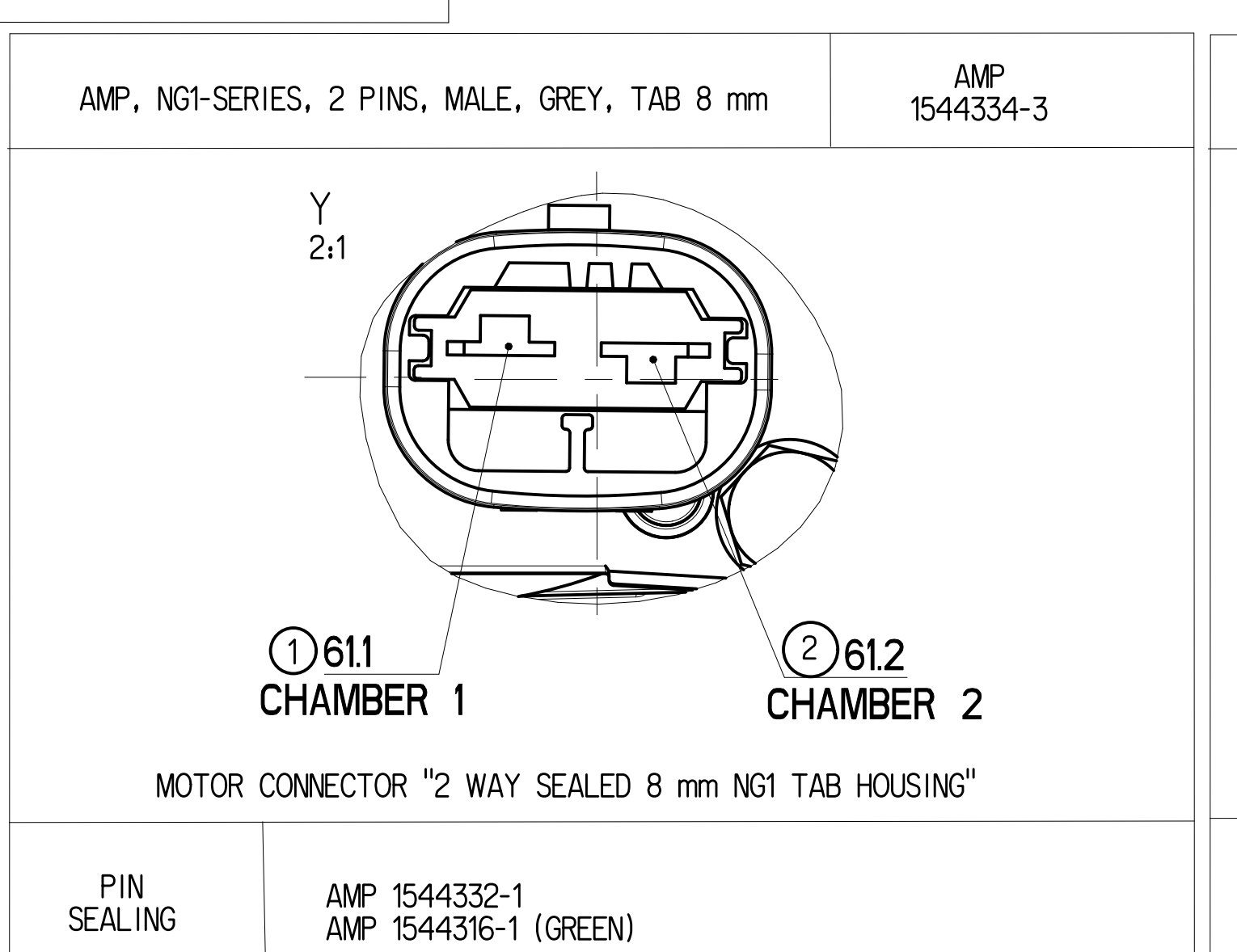
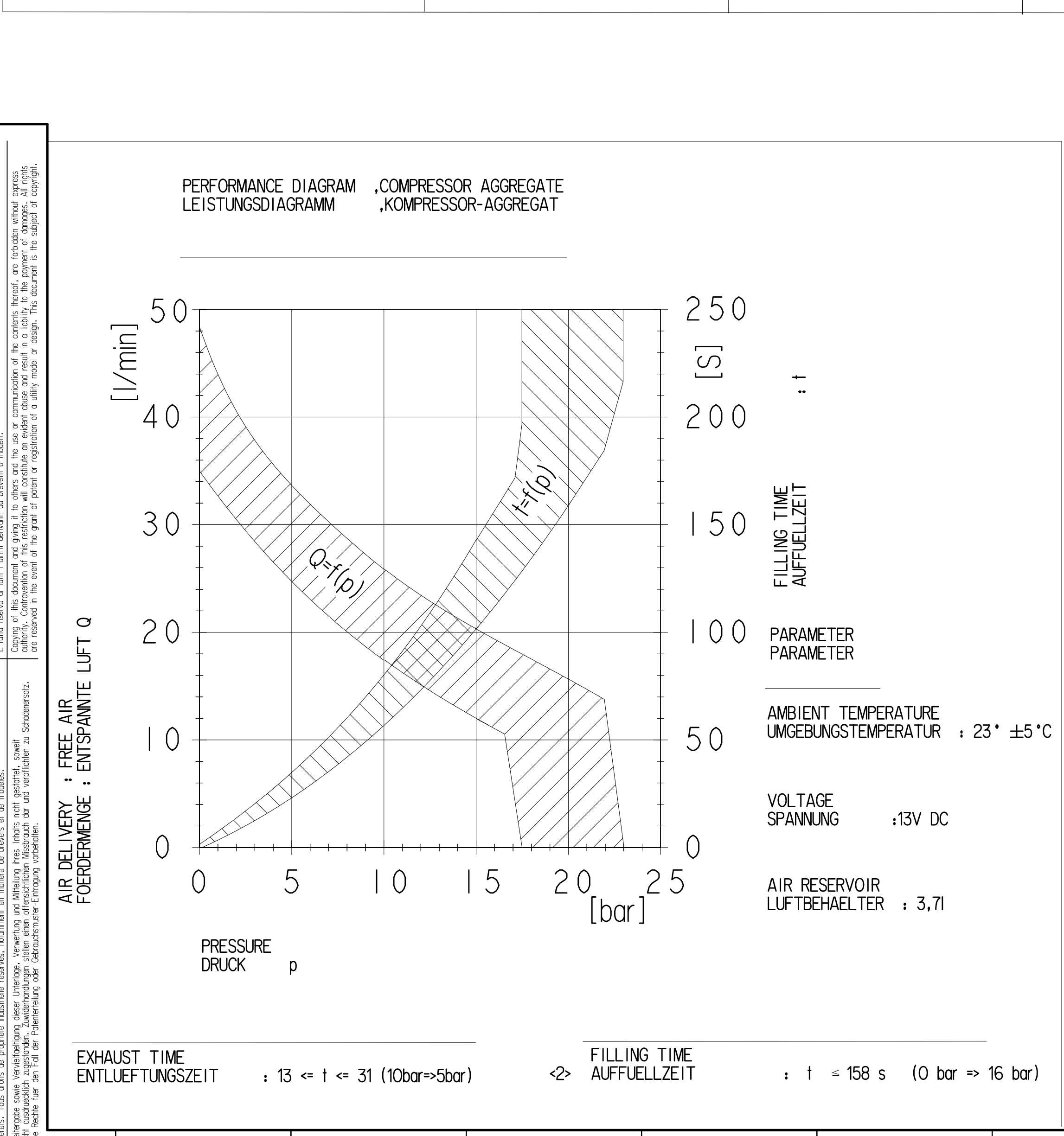
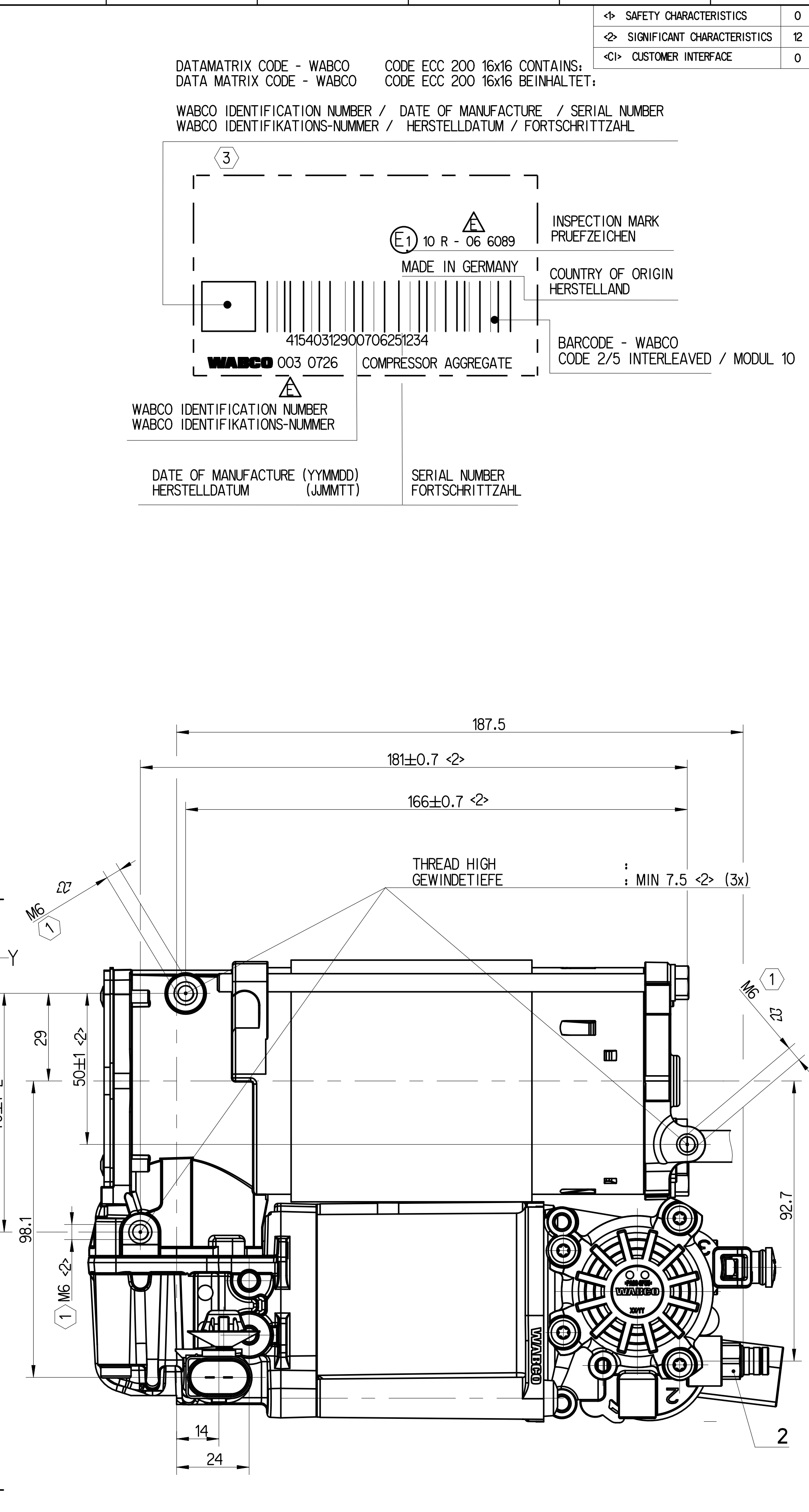
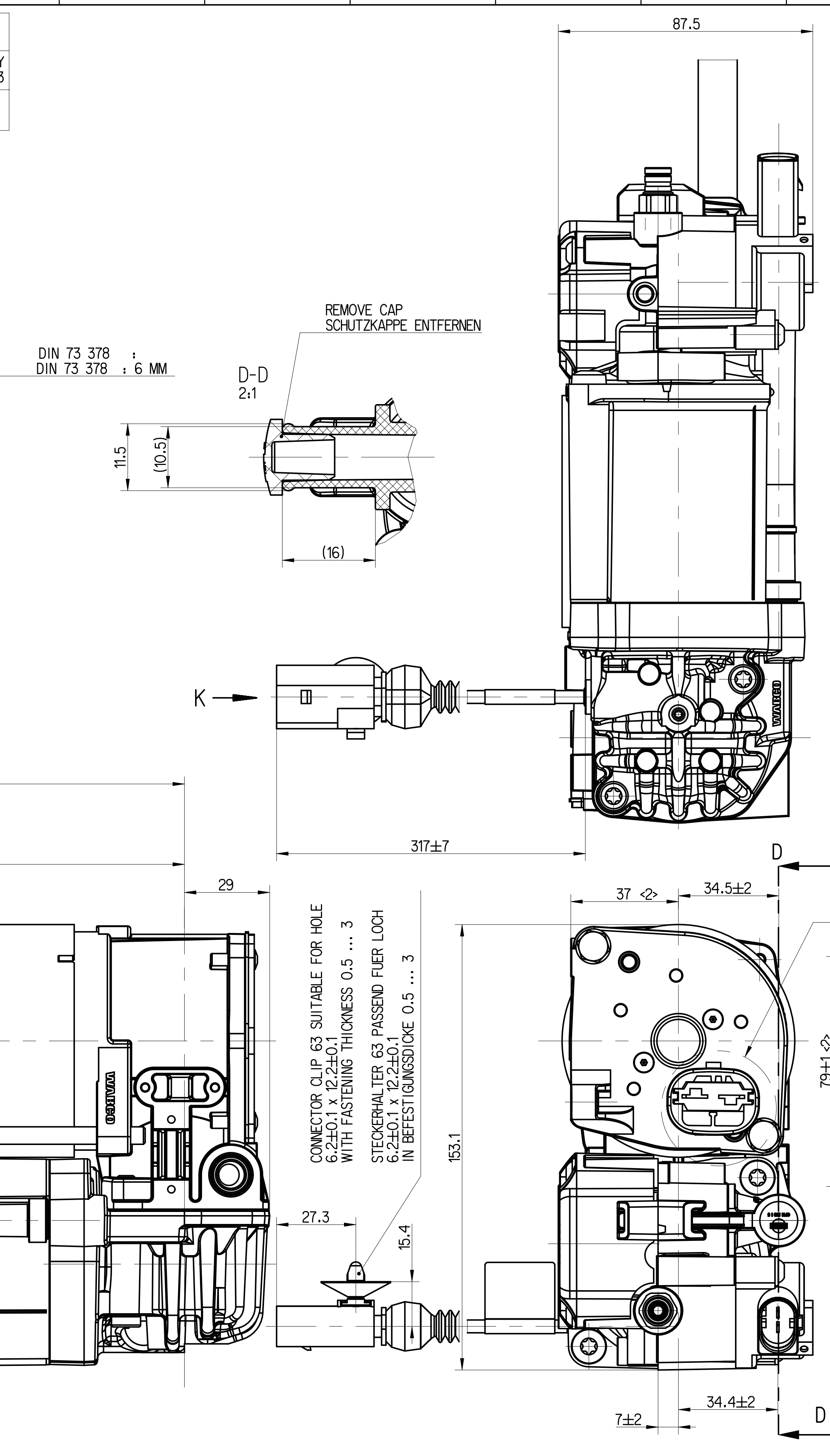
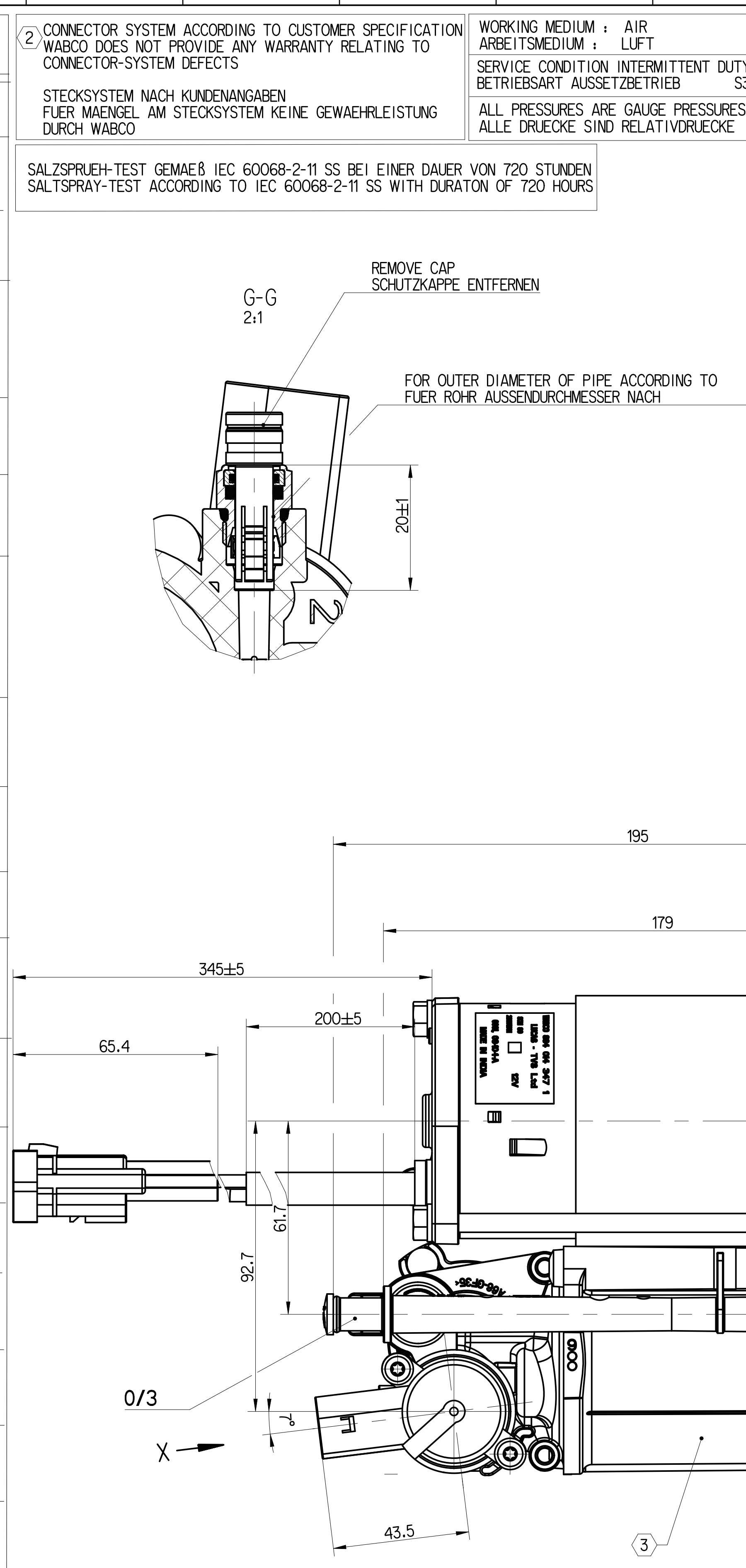
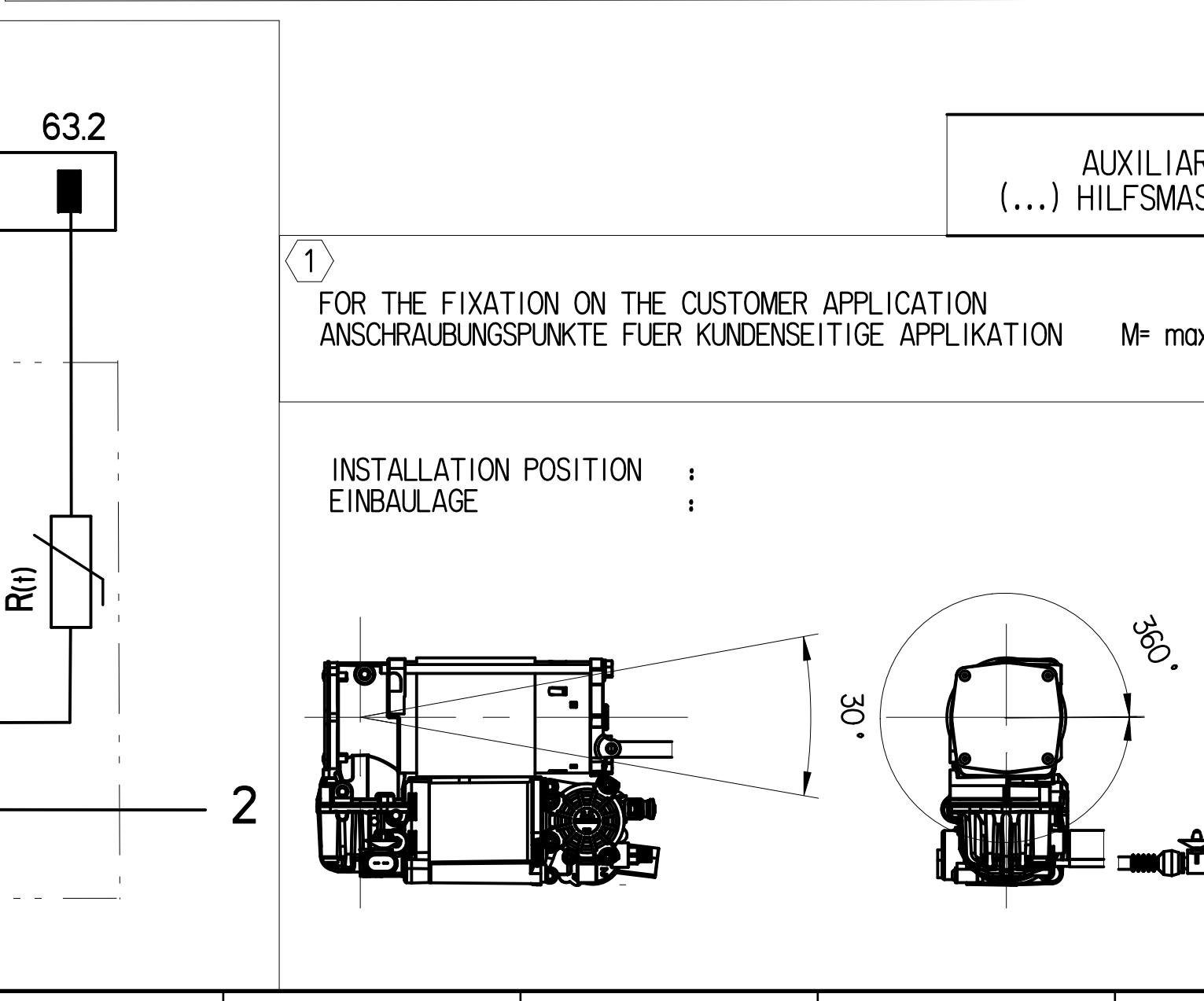
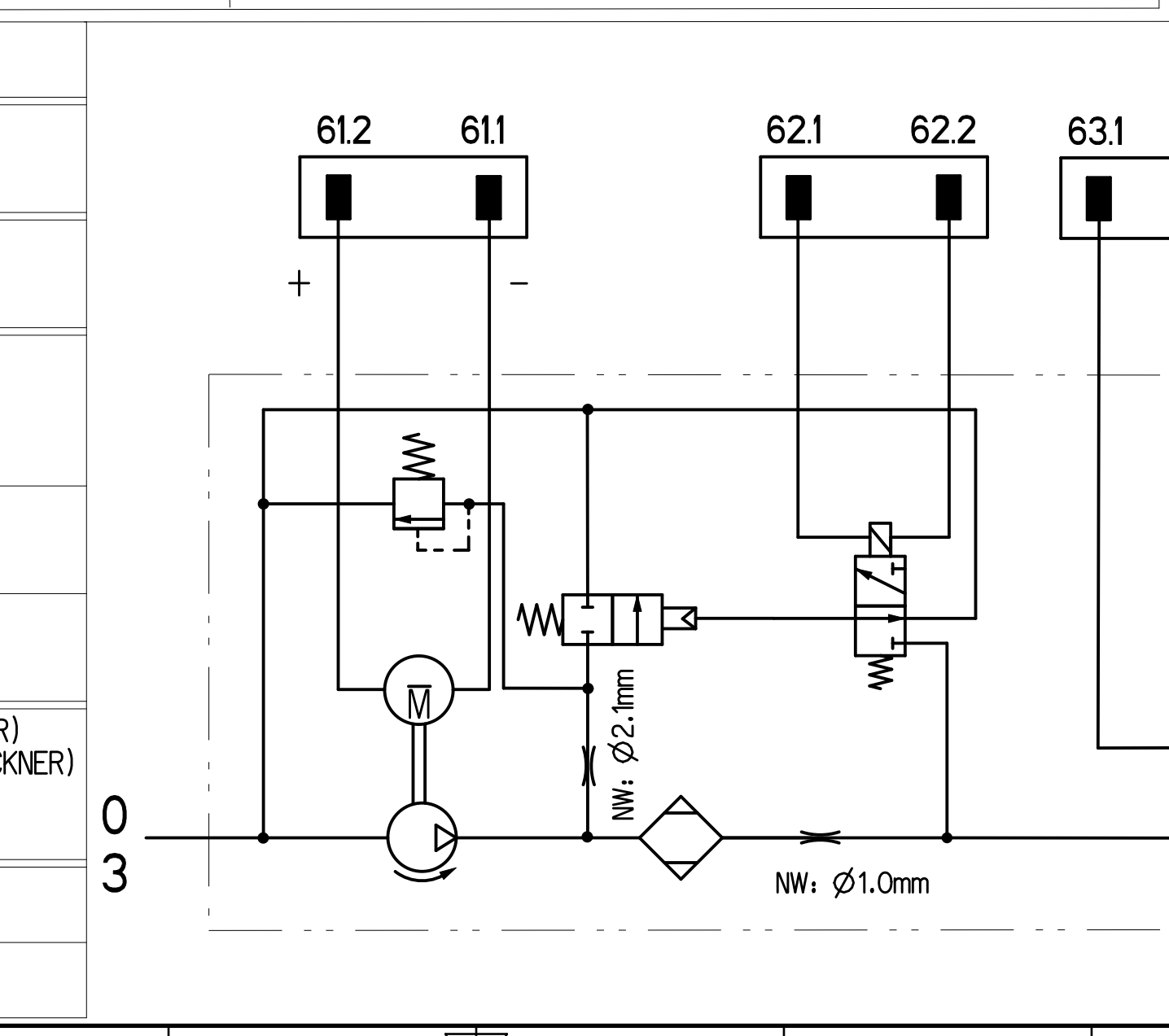


TECHNICAL DATA TECHNISCHE DATEN	COMPRESSOR KOMPRESSOR	SOLENOID VENTILMAGNET	TEMPERATURE SENSOR TEMPERATURSENSOR
TYPE OF CURRENT STROMART	DIRECT CURRENT GLEICHSTROM	DIRECT CURRENT GLEICHSTROM	DIRECT CURRENT GLEICHSTROM
OPERATING VOLTAGE BETRIEBSSPANUNG : U_n	9...16V	9...16V	5 ±0.125 V
NOMINAL VOLTAGE NENNSPANUNG : U_n	12V	12V	5 V
RATED CURRENT NENNSTROM		$I_n = 0,755A$ (23°C; 12V; 15,7Ω) PEAK AND HOLD (PWM-CONTROL) : $I_{max} = 390mA$ (4,5 bar support) $I_{max} = 427mA$ (0,0 bar support) $I_0 = 470mA$	----
MAXIMAL CURRENT INTENSITY MAXIMALE STROMSTARKE : I_{max}	35A (U=13V; ±23±5°C; p<16,0bar)	1.41A (-40°C; 16V; 14.9Ω)	----
DEGREE OF PROTECTION ACCORDING TO ISO 20653 SCHUTZART NACH ISO 20653	IP6K9K WITH MATING CONNECTOR MIT GEGENSTECKER IP6K7	IP6K9K WITH MATING CONNECTOR MIT GEGENSTECKER IP6K7	IP6K7
DUTY CYCLE EINSCHALTDAUER	10% / 10min (+ 23 °C) 7% / 10min (+ 55 °C) 4% / 10min (+ 80 °C) (U=13V; p = 10 bar)	33.3% / 5min (+ -40...+80 °C) PEAK AND HOLD (PWM-CONTROL) : 100% (+ -40...+80 °C)	100 % ED
WITHOUT ENCAPSULATION OHNE KAPSELUNG			
DYNAMIC PRESSURE LIMITING DYNAMISCHE DRUCKBEGRENZUNG : p	17.5 ¹⁰ BAR (+23 ±5 °C)	----	----
RESIDUAL PRESSURE RUECKHALTDRUCK : p	1.5 ¹⁰ BAR (+23 ±5 °C)	----	----
OPERATING PRESSURE BETRIEBSDRUCK : p	16.0 BAR	----	----
MAX. PERMISSIBLE PRESSURE IN CONNECTION 2 AT COMPRESSOR START-UP	RESIDUAL PRESSURE RUECKHALTDRUCK 2.5 BAR	----	----
OHMIC RESISTANCE OHMSCHER WIDERSTAND	----	15,7 ±0,8Ω (+20°C)	0,48kΩ @ +20°C 1,084kΩ @ +30°C 12,65kΩ @ +20°C 264,93kΩ @ -40°C
MEASURING RANGE MESSBEREICH	----	----	-40°C ... +140°C
THERMO COUPLE THERMOELEMENT	----	----	NTC-THERMISTOR NTC-TERMISTOR
AMBIENT TEMPERATURE UMGEBUNGSTEMPERATUR :	-40°C...+80°C	-40°C...+80°C	-40°C...+80°C
STORAGE TEMPERATURE LAGERTEMPERATUR :	-40°C...+90°C	-40°C...+90°C	-40°C...+90°C
SHORT TERM RESISTANCE TO HEAT KURZZEITIGE WAERMEBESTAENDIGKEIT :	MAX. 1h +110°C (WITHOUT FUNCTION) (OHNE FUNKTION)	MAX. 1h +110°C (WITHOUT FUNCTION) (OHNE FUNKTION)	MAX. 1h +110°C (WITHOUT FUNCTION) (OHNE FUNKTION)
LUBRICATION COMPRESSOR: SCHMIERUNG KOMPRESSOR:	DRY RUNNING TROCKENLAUF	----	----



PIN SEALING	AMP 1544332-1 AMP 1544316-1 (GREEN)
0	INLET ANSAUGUNG : COMPRESSOR AGGREGATE KOMPRESSOR-AGGREGAT
2	COMPRESSED AIR PORT DRUCKANSCHLUSS : COMPRESSOR AGGREGATE KOMPRESSORAGGREGAT
3	EXHAUST ENTLUEFTUNG : COMPRESSOR AGGREGATE KOMPRESSOR-AGGREGAT
61	ELECTRICAL CONTROL PORT ELEKTRISCHER STEUERANSCHLUSS : COMPRESSOR AGGREGATE KOMPRESSOR-AGGREGAT
②	MATING PART GEGENSTUECK : AMP Nr. : 1544317-3
61.1	EARTH CONNECTION MASSEANSCHLUSS
61.2	CONNECTION PLUS ANSCHLUSS PLUS
62	ELECTRICAL CONTROL ELEKTRISCHER STEUERANSCHLUSS : SOLENOID VALVE (AIR DRYER) MAGNETVENTIL (LUFTTROCKNER)
②	MATING PART GEGENSTUECK : KOSTAL 09 4412 91
63	ELECTRICAL CONTROL ELEKTRISCHER STEUERANSCHLUSS : TEMPERATURE SENSOR TEMPERATURSENSOR
②	MATING PART GEGENSTUECK : FEP NR. : 421 211 00



Further Technical Data		Date		Sheet		System	
Doc. Code	General Tolerances ISO 2013	2025-07-23	Patent	2025-07-23	1	1	1
415 403 129 0	1:1 (1:5, 1:2)	415 403 129 0	005	ML	1/1	2025-07-23	2025-07-23
Class		Material No.		Date of first issue		2025-07-23	
Fine		415 403 129 0		005		ML	
Medium		415 403 129 0		005		ML	
Course		415 403 129 0		005		ML	
Size		415 403 129 0		005		ML	
Tapped Holes acc.		415 403 129 0		005		ML	
Tolerances (also applied crossmarked)		415 403 129 0		005		ML	