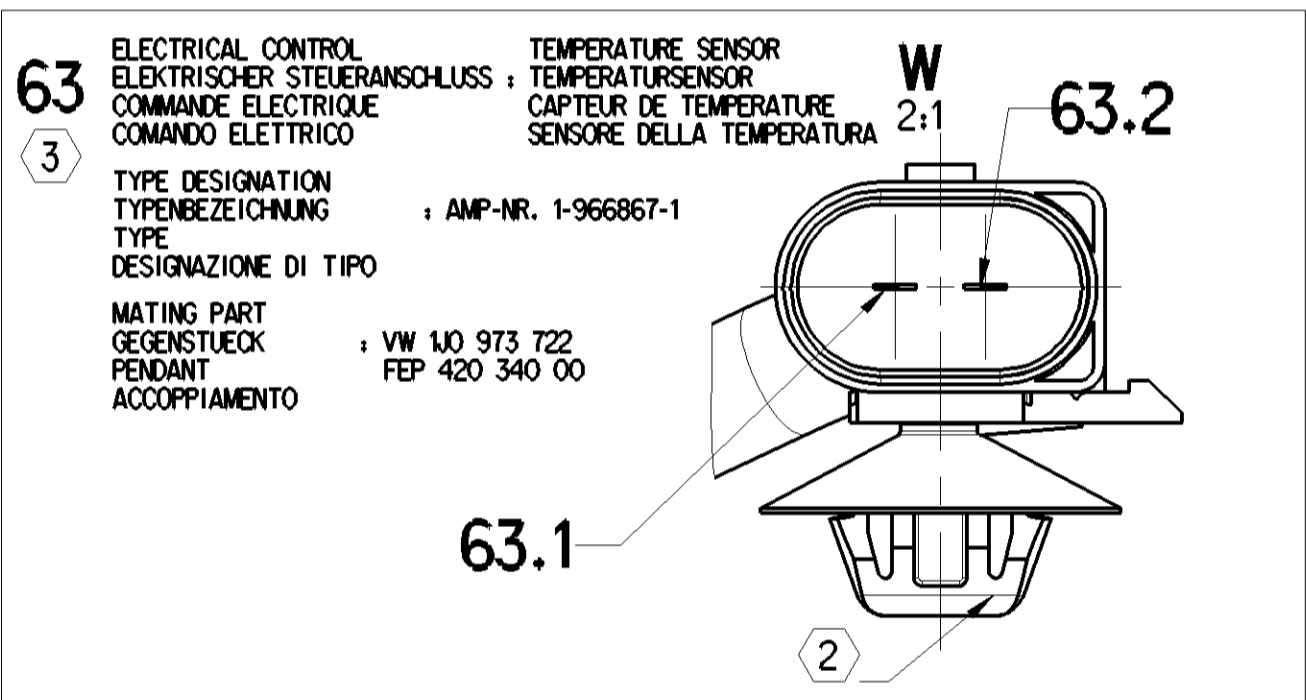
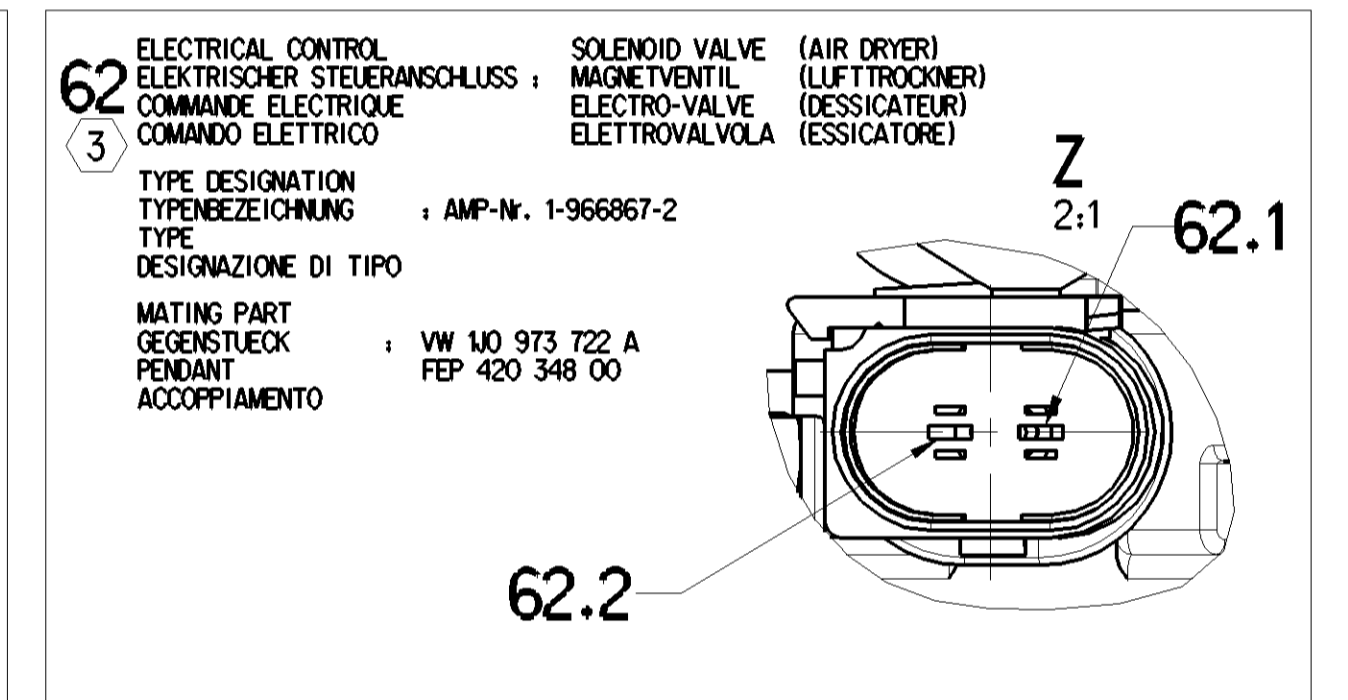
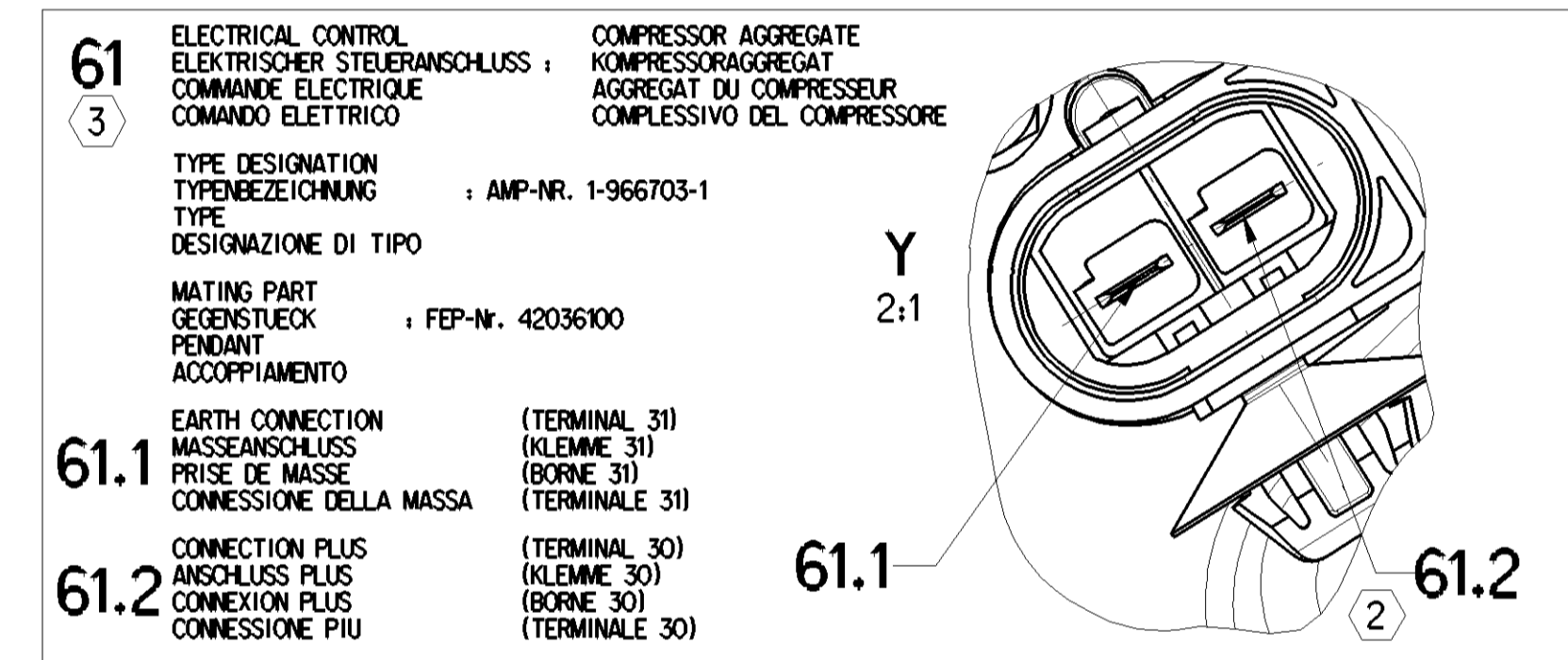


SURFACE PROTECTION : RESISTANCE TO CORROSION IN THE SALT SPRAY TEST TO 480h SST (DIN 50021S)
OBERFLÄCHENSCHUTZ : BESTÄNDIGKEIT GEGEN KORROSION IM SALZSPRÜHTEST NACH 480h SST (DIN 50021S)
PROTECTION DE SURFACE : RESISTANCE A LA CORROSION EN BROUILLARD SALIN SUIVANT 480h SST (DIN 50021S)
PROTEZIONE DELLA SUPERFICIE : RESISTENZA ALLA CORROSIONE IN NEBBIA SALINA SECONDO 480h SST (DIN 50021S)

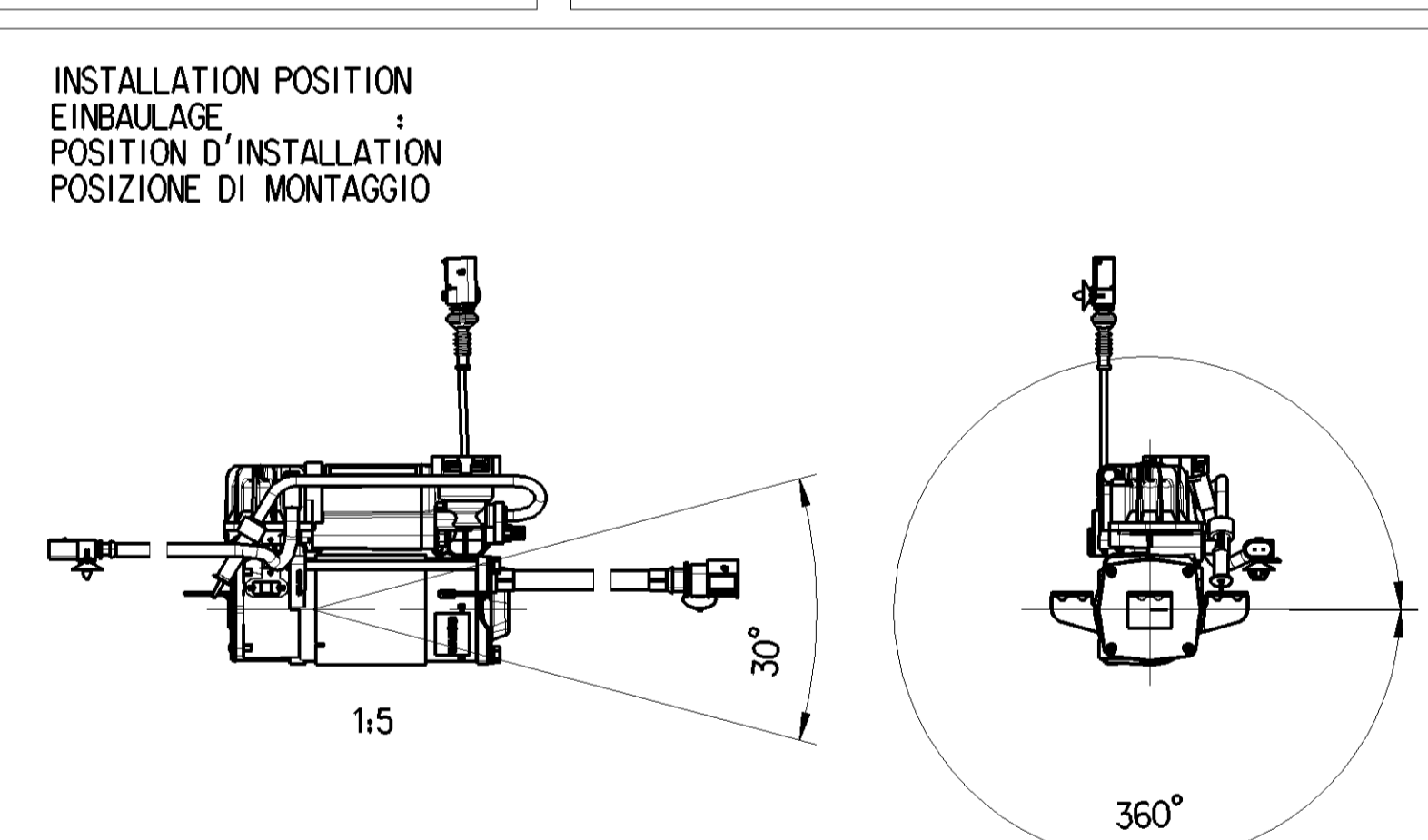
1 LENGTH OF CABLE : KABELLAENGE : TEMPERATURE SENSOR : TEMPERATURSENSOR
 LONGUEUR DU CABLE : CAPTEUR DE TEMPERATURE : LONGHEIT DEL CAVO : SENSORE DELLA TEMPERATURA
 DEVELOPED LENGTH : GESTRECKTE LAENGE : TEMPERATURE SENSOR CABLE : TEMPERATURSENSOR KABEL : 355±10
 LONGUEUR DEVELOPEE : CABLE DU CAPTEUR DE TEMPERATURE : LUNGHEZZA DELLO SVILUPPO : CAVO DI SENSORE DELLA TEMPERATURA

2 THICKNESS OF SHEET METAL : BLECHDICKLE : (0.5...3 mm) ±0.1
 EPAISSEUR DE TOLE : SPESSORE DELLA LAMIERA :
 OBLONG HOLE : LANGLOCH : (12.2 x 6.2 mm) ±0.1
 TROU OBLONG : FORO ALLUNGATO :
 4 REMOVE CAP : SCHUTZKAPPEN ENTFERNEN :
 ENLEVER LE CHAPEAU : LEAVARE LA CALOTTA

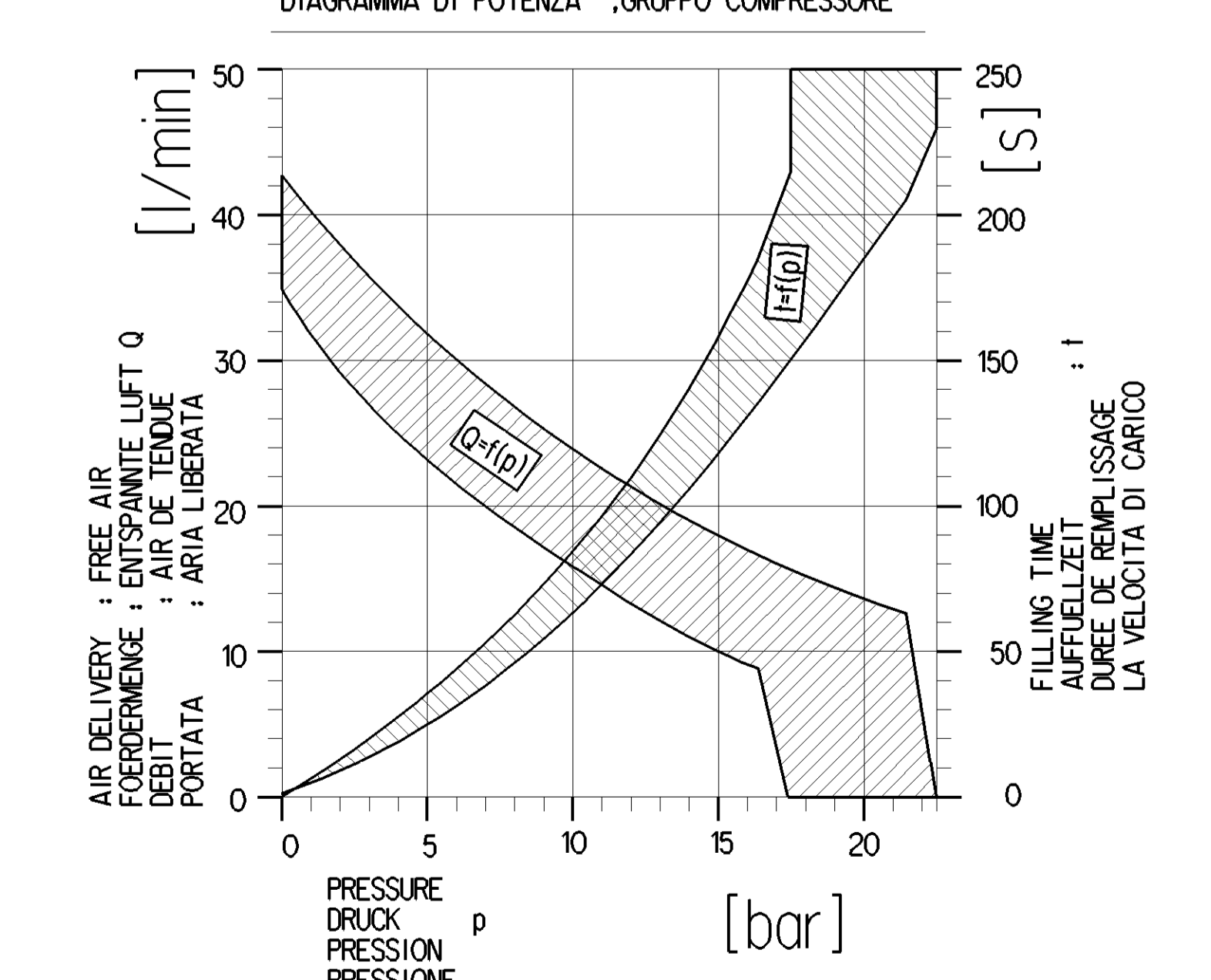
3 CONNECTOR SYSTEM ACCORDING TO CUSTOMER SPECIFICATION
 WABCO DOES NOT PROVIDE ANY WARRANTY RELATING TO CONNECTOR-SYSTEM DEFECTS
 STECKSYSTEM NACH KUNDENANGABEN
 FUER MAENDEL AM STECKSYSTEM KEINE GEWAHRLEISTUNG DURCH WABCO
 SYSTEME DE CONNECTEURS SUIVANT SPECIFICATION DU CLIENT
 WABCO NE FOURNIT AUCUNE GARANTIE RELATIVE AUX DEFAUTS DANS LE SYSTEME DE CONNECTEURS
 SISTEMA DI CONNETTORI SECONDO SPECIFICA DEL CLIENTE
 WABCO NON FORNISCE NESSUNA GARANZIA SULLE DIFETTI DI SISTEMA DI CONNETTORI



TECHNICAL DATA TECHNISCHE DATEN CARACTERISTIQUES TECHNIQUES CARATTERISTICHE TECNICHE	COMPRESSOR KOMPRESSOR COMPRESSEUR COMPRESSORE	SOLENOID VENTILMAGNET AIMANT ELETTROMAGNETE	TEMPERATURE SENSOR TEMPERATURSENSOR CAPTEUR DE TEMPERATURE SENSORE DELLA TEMPERATURA
TYPE OF CURRENT STROMART NATURE DU COURANT NATURA DELLA CORRENTE	DIRECT CURRENT GLEICHSTROM COURANT CONTINU CORRENTE CONTINUA	DIRECT CURRENT GLEICHSTROM COURANT CONTINU CORRENTE CONTINUA	DIRECT CURRENT GLEICHSTROM COURANT CONTINU CORRENTE CONTINUA
OPERATING VOLTAGE BETRIEBSSPANNUNG TENSION DE SERVICE TENSIONE DI SERVIZIO	9...16V	9...16V	4.875...5.125V
NOMINAL VOLTAGE NENNSPANNUNG TENSION NOMINALE TENSIONE NOMINALE	12V	12V	5V
RATED CURRENT NENNSTROM COURANT NOMINAL CORRENTE NOMINALE	I = 0.75A I >= 390mA I <= 470mA	I = 0.8A I >= 390mA I <= 470mA PEAK AND HOLD	
MAXIMAL CURRENT INTENSITY MAXIMALE STROMSTARKE INTENSITE MAXIMAL DU COURANT INTENSITA MASSIMA DELLA CORRENTE	35A (U=12V, t=23±5°C, p=10bar)	0.8A	
DEGREE OF PROTECTION ACCORDING TO IEC 529 SCHUTZART NACH IEC 529 DEGRE DE PROTECTION SUIVANT IEC 529 GRADO DI PROTEZIONE SECONDO IEC 529	IP68	IP68	IP68
DEGREE OF PROTECTION ACCORDING TO DIN 40050 SCHUTZART NACH DIN 40050 DEGRE DE PROTECTION SUIVANT DIN 40050 GRADO DI PROTEZIONE SECONDO DIN 40050	IP6K7 IP6K6	IP6K7 IP6K6	IP6K7 IP6K6
DUTY CYCLE EINSCHALTDAUER DUREE DE FONCTIONNEMENT CICLO DI LAVORO	15% ED / 10min (t=23±5°C) 5% ED / 10min (t=80±5°C) 3% ED / 10min (t=100±5°C)	33.3% ED / 5min (t=-40...+80°C) 100% ED (t=-40...+100°C) PEAK AND HOLD	100% ED
DYNAMIC PRESSURE LIMITING DYNAMISCHE DRUCKBEGRENZUNG LIMITATION DE PRESSION DYNAMIQUE LIMITAZIONE DI PRESSIONE DINAMICA	17.5 ±0.5 bar		
RESIDUAL PRESSURE RUECKHALTDRUCK PRESSION DE RETENUE PRESSIONE DI RITENUTA	1 ±0.5 bar		
OHMIC RESISTANCE OHMSCHER WIDERSTAND RESISTANCE OHM RESISTENZA OHM			0.297kΩ bei +140°C 1.084kΩ bei +90°C 10.47kΩ bei +25°C 301.5kΩ bei -40°C
MEASURING RANGE MESSBEREICH ZONE DE MESURE CAMPO DI MISURA			-40°C ... +140°C
THERMO COUPLE THERMOELEMENT COUPLE THERMOELECTRIQUE COPPIA TERMOELETTRICA			NTC-THERMISTOR NTC-THERMISTOR NTC-THERMISTANCE NTC-THERMISTORE

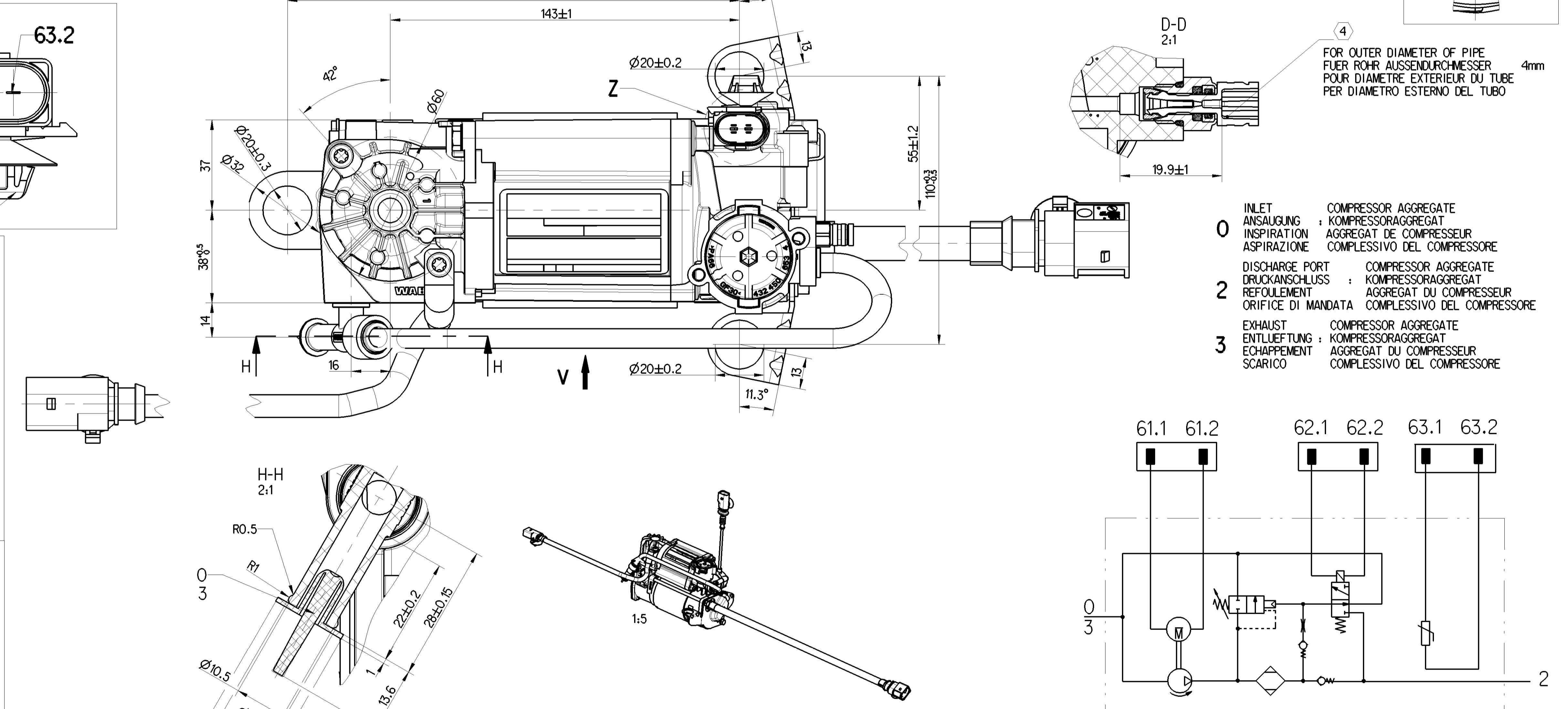


PERFORMANCE DIAGRAM : ,COMPRESSOR AGGREGATE
LEISTUNGSDIAGRAMM : ,KOMPRESSOR-AGGREGAT
DIAGRAMME DE PUISSANCE : ,AGGREGAT COMPRESSEUR
DIAGRAMMA DI POTENZA : ,GRUPPO COMPRESSORE



AIR DELIVERY : FREE AIR
FORBERMENGE : AIR DE TENDUE
PORTATA : ARIA LIBERATA

EXHAUST TIME
ENTLUFTUNGSZEIT : 20s <= t <= 48s (10bar=>5bar)
TEMPS D'ÉCHAPPEMENT
TEMPO DI SCARICO :
FILLING TIME
AUFFÜLLZEIT : t <= 175s (0bar=>16bar)
DUREE DE REMPLISSAGE
LA VELOCITÀ DI SCARICO



PARAMETER
PARAMETRE
IL PARAMETRO

AMBIENT TEMPERATURE
UMGEBUNGSTEMPERATUR : 23° ±5°C
TEMPERATURE AMBIANTE
TEMPERATURA AMBIENTE

VOLTAGE
SPANNUNG : 13V DC
VOLTAGE
VOLTAGGIO

AIR RESERVOIR
LUFTBEHALTER : 3.7l
RESERVOIR D'AIR
SERBATOIO ARIA

WABCO IDENTIFICATION NUMBER
WABCO IDENTIFIKATIONS-NUMMER
WABCO NUMERO D'IDENTIFICATION
WABCO NUMERO D'IDENTIFICAZIONE

INSPECTION FIGURE
PREFEZZIFER
CHIFFRE DE CONTROLE
CIFRA DI COLLAUDO

DATE OF MANUFACTURE
HERSTELLDATUM
DATE DE FABRICATION
DATA DI FABBRICAZIONE

SERIAL NUMBER
Fortschrittszahl
NUMERO DE SERIE
NUMERO DI SERIE

SERVICE CONDITION INTERMITTENT DUTY
BETRIEBSART AUSSETZBETRIEB : S3
CONDITION OF SERVICE SERVICE INTERMITTENT
CONDIZIONE DI SERVIZIO FUNZIONAMENTO INTERMITTENTE

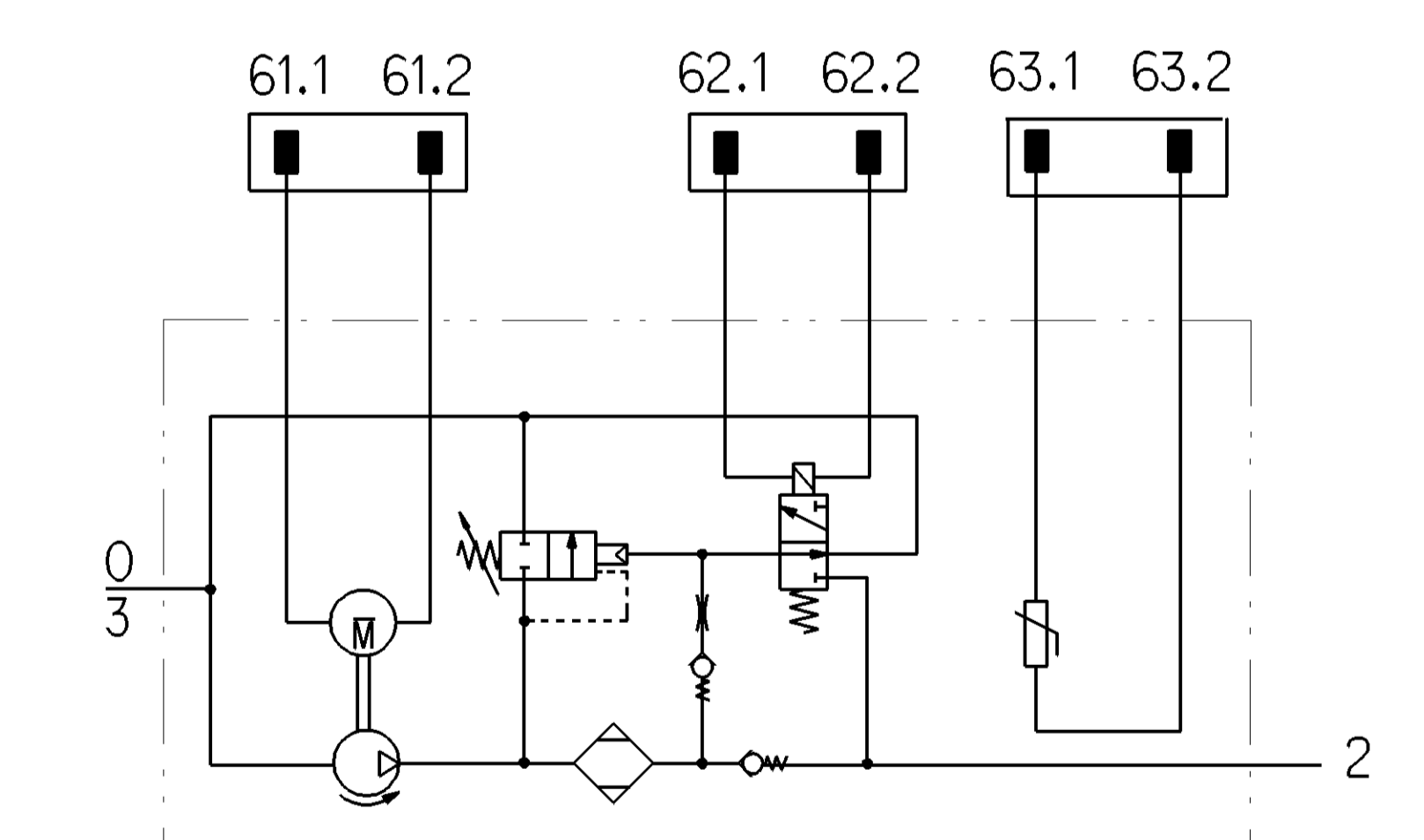
AMBIENT TEMPERATURE
UMGEBUNGSTEMPERATUR : -40°C...+100°C
TEMPERATURE AMBIANTE
TEMPERATURA AMBIENTE

STORAGE TEMPERATURE
LAGERTEMPORATUR : -40°C...+100°C
TEMPERATURE DE STOCKAGE
TEMPERATURA DI IMMAGAZINAMENTO

SHORT TERM RESISTANCE TO HEAT
KURZZEITIGE WÄRMESTÄNDIGKEIT : MAX. 1h +110°C (OHNE FUNKTION)
RESISTANCE THERMIQUE TEMPORAIRE : MAX. 1h +110°C (SANS FONCTION)
RESISTENZA TERMICA PER BREVE PERIODO (SENZA FUNZIONE)

LUBRICATION COMPRESSOR : DRY RUNNING
SCHMIERUNG KOMPRESSOR : TROCKENLAUF
GRAISSAGE COMPRESSEUR : FONCTIONNEMENT A SEC
LUBRIFICAZIONE COMPRESSORE : FUZIONAMENTO A SECCO

WORKING MEDIUM : AIR
ARBEITSMEDIUM : LUFT
FLUIDE D'UTILISATION : AIR
FLUIDO DI ESERCIZIO : ARIA



General Specification: ISO 8015, A8-334-1, Size ISO 14405 LP	Copyright WABCO	WABCO
Further Technical Data	Date: 2022-08-12	COMPRESSOR AGGREGATE KOMPRESSOR-AGGREGAT AGGREGAT DU COMPRESSEUR COMPRESSIVO DEL COMPRESORE
Doc. Code: 415 403 308 0	Sheet: 1 of 1	Revision: 005 ML 1/1
Class: 11 ±0.5 × 80 × 180 × 400 × 400	Dimensions in mm	Date of first issue: 2006-04-27
Material: X ±0.5 ±0.2 ±0.3 ±0.3 ±0.3	3.9	Doc. Code: Language: Sheet
Control: ±0.2 ±0.5 ±0.5 ±0.5 ±0.5	1:1 (0.5/2.0)	Size: (1/32)mm
A 0 090 50872 3x B 1730		Prepared for: