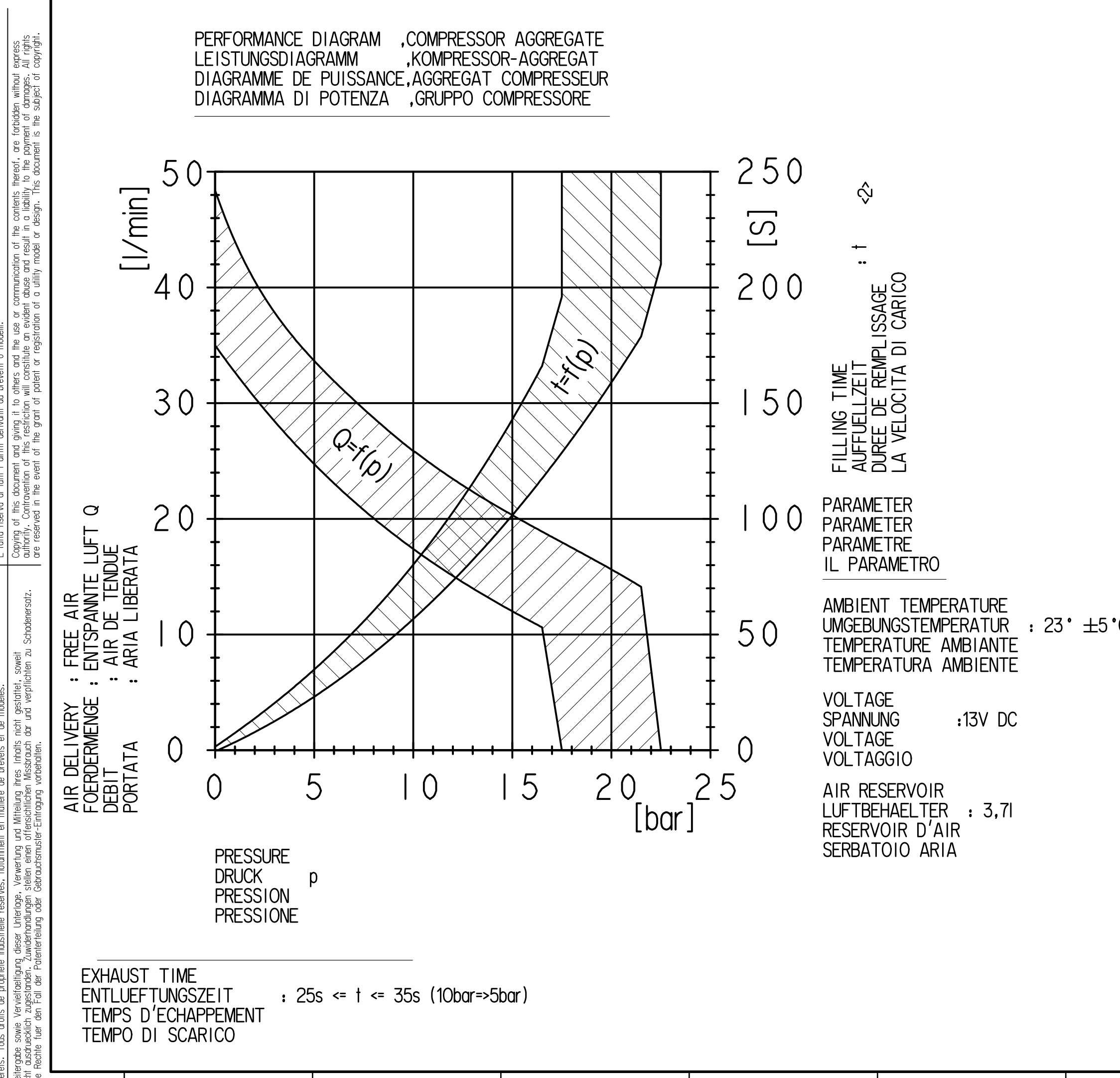
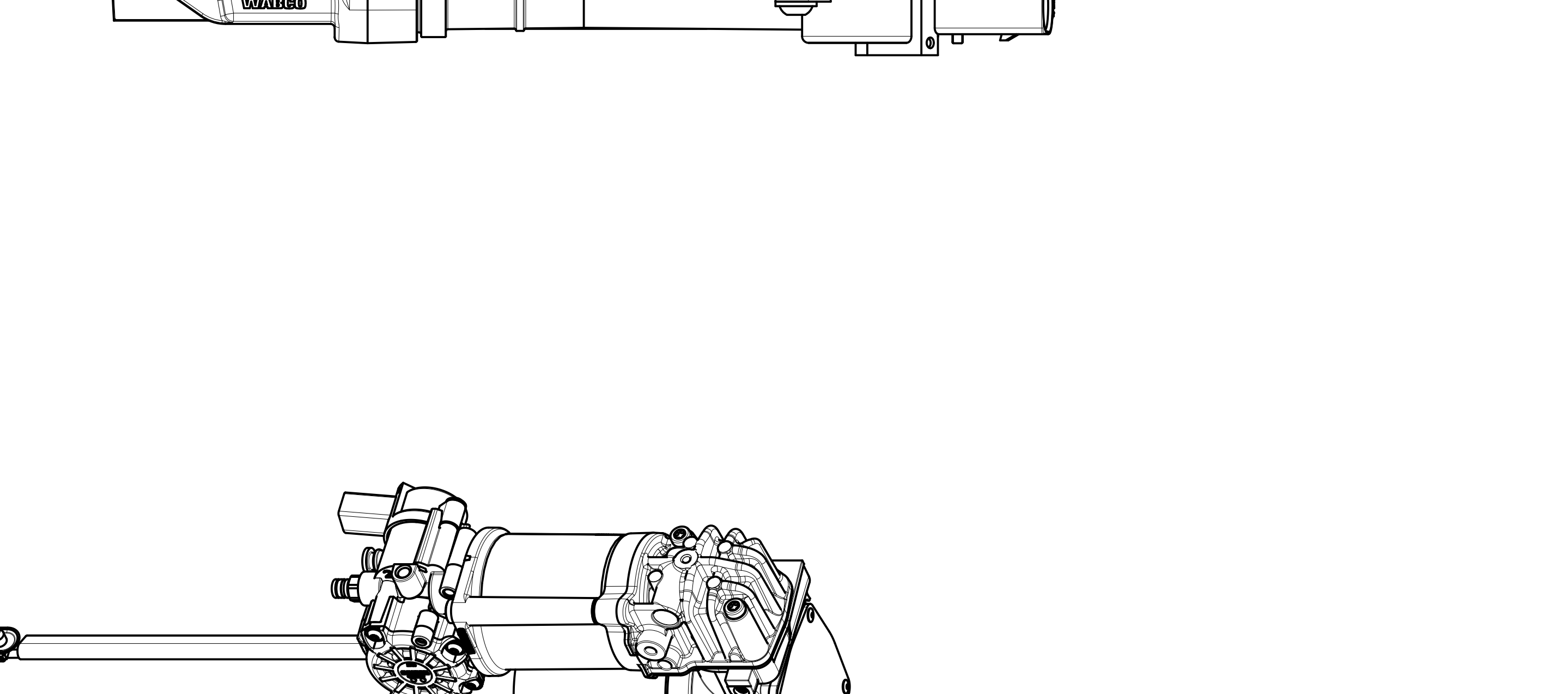
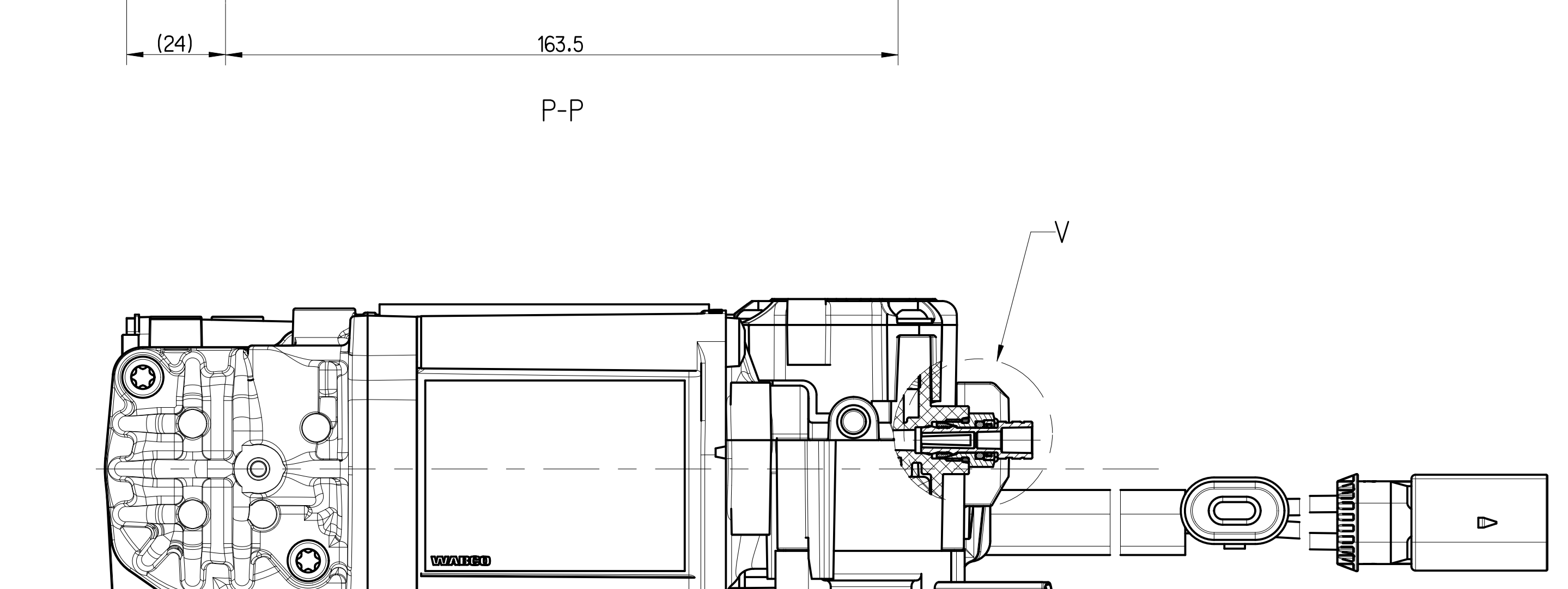
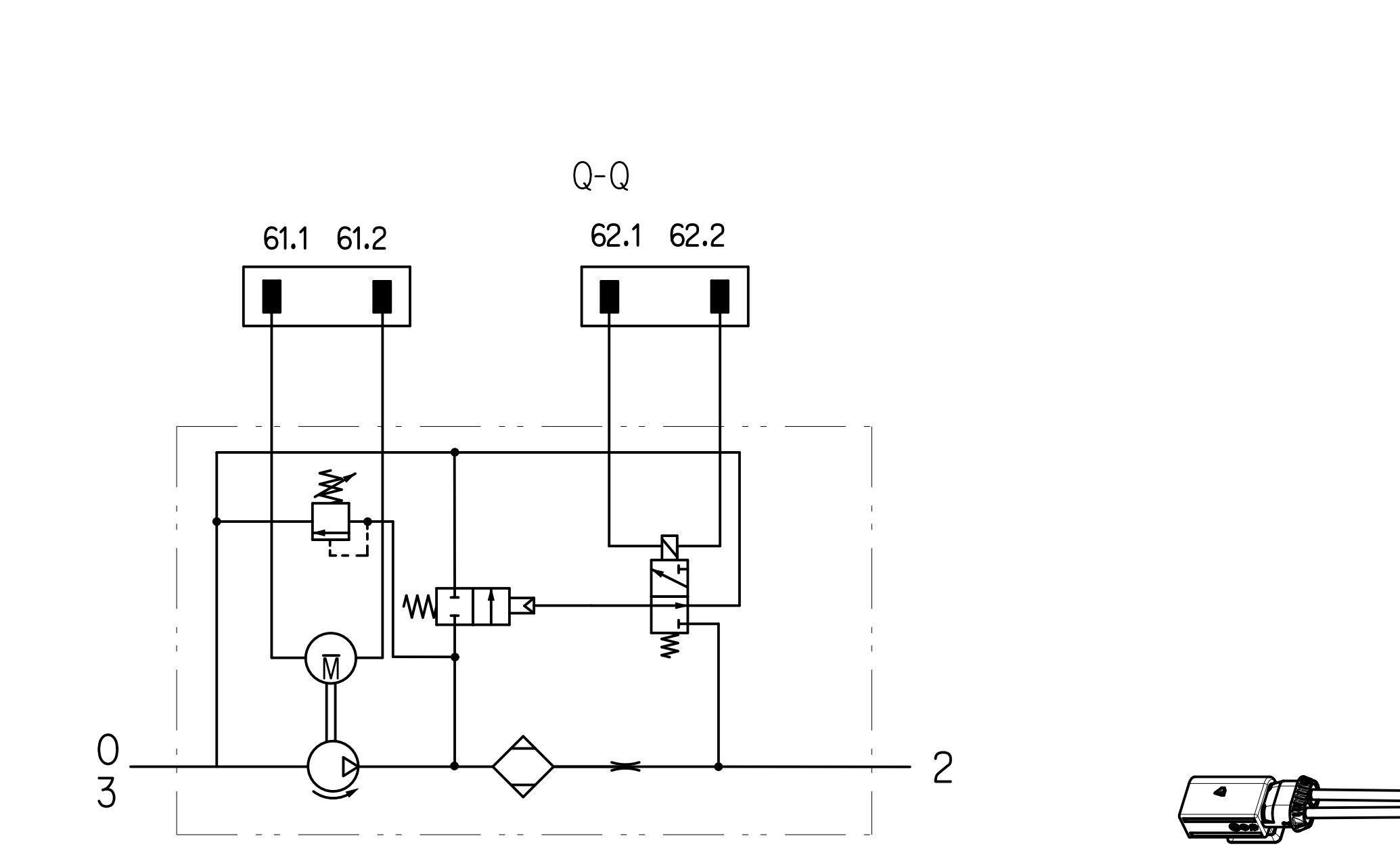
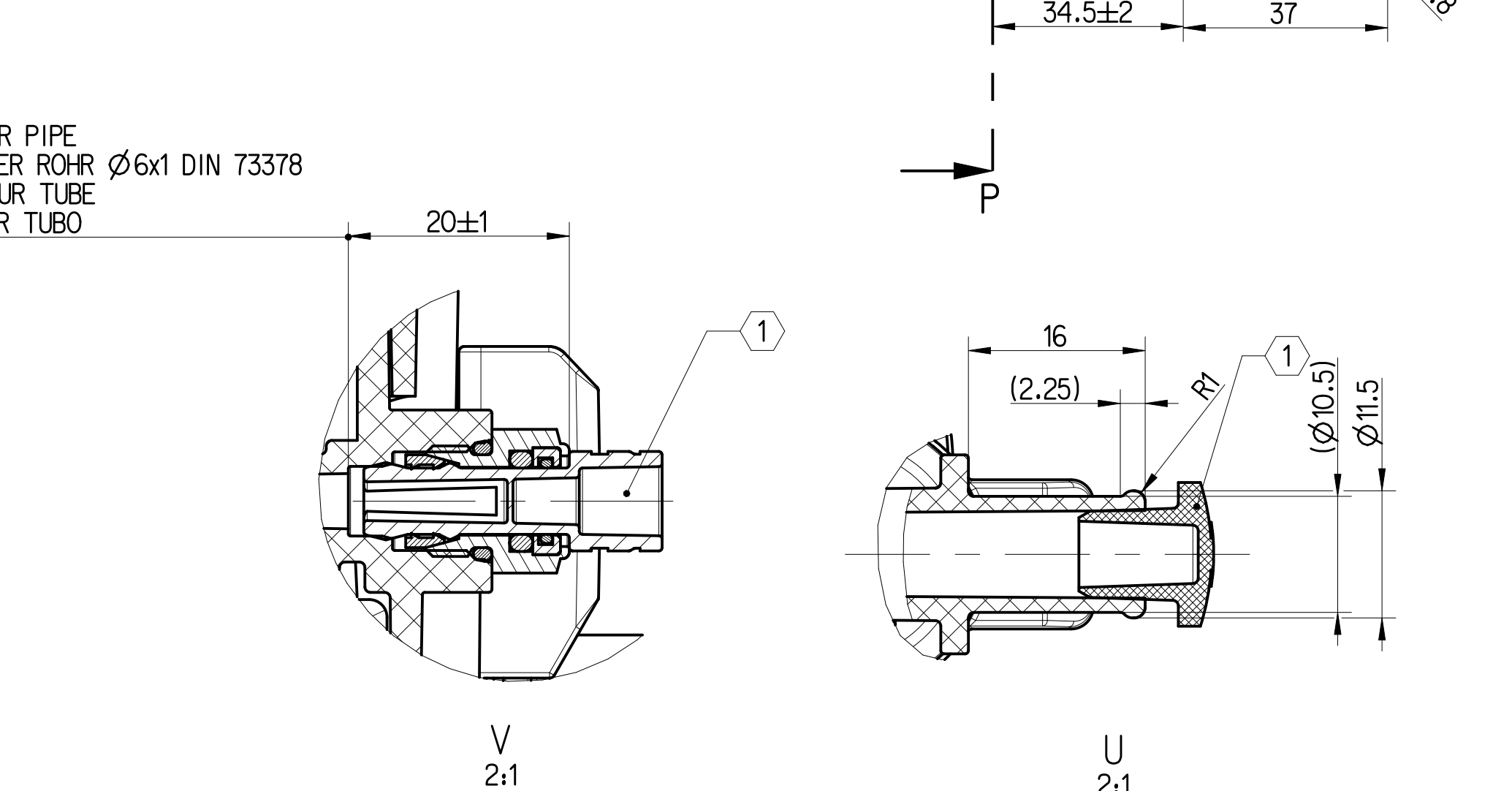


TECHNICAL DATA TECHNISCHE DATEN CARACTERISTIQUES TECHNIQUES CARATTERISTICHE TECNICHE	COMPRESSOR KOMPRESSOR COMPRESSEUR COMPRESSORE	SOLENOID VENTILMAGNET AIMANT ELETTROMAGNETE
TYPE OF CURRENT STROMART NATURE DU COURANT NATURA DELLA CORRENTE	DIRECT CURRENT GLEICHSTROM COURANT CONTINU CORRENTE CONTINUA	DIRECT CURRENT GLEICHSTROM COURANT CONTINU CORRENTE CONTINUA
OPERATING VOLTAGE BETRIEBSSPANNUNG : U _b TENSION DE SERVICE TENSIONE DI SERVIZIO	9...16V	9...16V
NOMINAL VOLTAGE NENNSPANNUNG : U _n TENSION NOMINALE TENSIONE NOMINALE	12V	12V
RATED CURRENT NENNSTROM : I _n COURANT NOMINAL CORRENTE NOMINALE		I _n = 0.75A I _{res} ≥ 390mA I _p ≤ 470mA PEAK AND HOLD
MAXIMAL CURRENT INTENSITY MAXIMALE STROMSTÄRKE : I _{max} (U=12V; INTENSITÀ MAXIMALE DU COURANT INTENSITÀ MASSIMA DELLA CORRENTE	35A	0.8A
DEGREE OF PROTECTION ACCORDING TO IEC 529 SCHUTZART NACH IEC 529 DEGRE DE PROTECTION SUIVANT IEC 529 GRADO DI PROTEZIONE SECONDO IEC 529	IP68	IP68
DEGREE OF PROTECTION ACCORDING TO DIN 40050 SCHUTZART NACH DIN 40050 DEGRE DE PROTECTION SUIVANT DIN 40050 GRADO DI PROTEZIONE SECONDO DIN 40050	IP6K6 MIT AUFGESTECKTER KONTAKTIERUNG IP6K7	IP6K6 MIT AUFGESTECKTER KONTAKTIERUNG IP6K7
DUTY CYCLE EINSCHALTDAUER (U=13V) DUREE DE FONCTIONNEMENT CICLO DI LAVORO	15% ED / 10min (+ 23±5°C) 3% ED / 10min (+ 80±5°C)	33.3% ED / 5min (+ -40...+80°C) 100% ED (+ -40...+100°C) PEAK AND HOLD
DYNAMIC PRESSURE LIMITING DYNAMISCHE DRUCKBEGRENZUNG : p LIMITATION DE PRESSION DYNAMIQUE LIMITAZIONE DI PRESSIONE DINAMICO	17.5 ³ / ₁₀ bar ↯ (+ 23±5°C)	
RESIDUAL PRESSURE RUECKHALTDRUCK : p PRESSION DE RETENUE PRESSIONE DI RITENUTA	1.5 ¹ / ₁₀ bar	
MAX. PERMISSIBLE PRESSURE IN CONNECTION 2 AT COMPRESSOR START-UP MAX. ZULÄSSIGER DRUCK IN ANSCHLUSS 2 BEI KOMPRESSORANLAUF MAX. PRESSION AMMISSIBLE A RACCORDAMENTO 2 A COMPRESSEUR MISE EN TRAIN MAX. PRESSIONE AMMISSIBILE EL COLLEGAMENTO 2 A COMPRESSORE START-UP	RESIDUAL PRESSURE RUECKHALTDRUCK 2.5 bar PRESSION DE RETENUE PRESSIONE DI RITENUTA	



0	INLET ANSAUGUNG INSPIRATION ASPIRAZIONE	COMPRESSOR AGGREGATE KOMPRESSORAGGREGAT AGGREGAT DE COMPRESSEUR COMPRESSIVO DEL COMPRESSORE
2	DISCHARGE PORT DRUCKANSCHLUSS REFOULEMENT ORIFICE DI MANDATA	COMPRESSOR AGGREGATE KOMPRESSORAGGREGAT AGGREGAT DU COMPRESSEUR COMPRESSIVO DEL COMPRESSORE
3	EXHAUST ENTLUEFTUNG ÉCHAPPEMENT SCARICO	COMPRESSOR AGGREGATE KOMPRESSORAGGREGAT AGGREGAT DU COMPRESSEUR COMPRESSIVO DEL COMPRESSORE
② 61	ELECTRICAL CONTROL ELEKTRISCHER STEUERANSCHLUSS : COMMANDE ELECTRIQUE COMANDO ELETTRICO	COMPRESSOR AGGREGATE KOMPRESSORAGGREGAT AGGREGAT DU COMPRESSEUR COMPRESSIVO DEL COMPRESSORE
	TYPE DESIGNATION TYPENBEZEICHNUNG : KOSTAL 100 22 497 DESIGNAZIONE DI TIPO	
	MATING PART GEGENSTUECK PENDANT ACCOPPIAMENTO	: KOSTAL 09 4422 00 OR KOSTAL 09 4422 91
611	EARTH CONNECTION MASSEANSCHLUSS PRISE DE MASSE CONNESSIONE DELLA MASSA (TERMINALE 31)	(TERMINAL 31) (KLEMME 31) (BORNE 31) (TERMINALE 31)
612	CONNECTION PLUS ANSCHLUSS PLUS CONNECTION PLUS (BORNE 30) CONNESSIONE PIU (TERMINALE 30)	(TERMINAL 30) (KLEMME 30) (BORNE 30) (TERMINALE 30)
② 62	ELECTRICAL CONTROL ELEKTRISCHER STEUERANSCHLUSS : COMMANDE ELECTRIQUE COMANDO ELETTRICO	
	MATING PART GEGENSTUECK PENDANT ACCOPPIAMENTO	: KOSTAL 09 4412 11
621/62.2	SOLENOID VALVE (AIR DRYER) MAGNETVENTIL (LUFTTROCKNER) ELECTRO-VALVE (DESSICATEUR) ELETTROVALVOLA (ESSICCATORE)	

SERVICE CONDITION INTERMITTENT DUTY
BETRIEBSART AUSSETZBETRIEB S3
CONDITION DU SERVICE SERVICE INTERMITTENT
CONDIZIONE DI SERVIZIO FUNZIONAMENTO INTERMITTENTE

AMBIENT TEMPERATURE
UMGEBUNGSTEMPERATUR : -40°C...+80°C
TEMPERATURE AMBIANTE
TEMPERATURA AMBIENTE

STORAGE TEMPERATURE
LAGERTEMPORATUR : -40°C...+100°C
TEMPERATURE DE STOCKAGE
TEMPERATURA DI IMMAGAZZINAMENTO

SHORT TERM RESISTANCE TO HEAT
KURZZEITIGE WÄRMERESISTÄNDIGKEIT : MAX. 1h +110°C (WITHOUT FUNCTION)
RESISTANCE THERMIQUE TEMPORAIRE
RESISTANZA TERMICA PER BREVE PERIODO (SENZA FUNZIONE)

LUBRICATION COMPRESSOR : DRY RUNNING
SCHMIERUNG KOMPRESSOR : TROCKENLAUF
GRAISSAGE COMPRESSEUR : FONCTIONNEMENT A SEC
LUBRIFICAZIONE COMPRESSORE : FUZIONAMENTO A SECCO

WORKING MEDIUM : AIR
ARBEITSMEDIUM : LUFT
FLUIDE D'UTILISATION : AIR
FLUIDO DI ESERCIZIO : ARIA

NON-DIMENSIONED CONTOURS TO BE MADE ACCORDING TO 3D CAD MODEL
NICHT BEMASSTE KONTUREN ENTSPRECHEND 3D CAD MODELL
CONTOURS NON COTES A REALISER SUIVANT MODELE CAD 3D
CONTORNI NON QUOTATI DEVONO ESSERE REALIZZATI SECONDO MODELLO CAD 3D

1 REMOVE CAP SCHUTZKAPPE ENTFERNEN
ENLEVER LE CHAPEAU
LEAVARE LA CALOTTA

2 STECKSYSTEM NACH KUNDENANGABEN
WABCO DOES NOT PROVIDE ANY WARRANTY RELATING TO CONNECTOR-SYSTEM DEFECTS

SYSTEME DE CONNECTEURS SUIVANT SPECIFICATION DU CLIENT
WABCO NE FOURNIT AUCUNE GARANTIE RELATIVE AUX DEFAUTS DANS LE SYSTEME DE CONNECTEURS

SISTEMA DI CONNETTORI SECONDO SPECIFICA DEL CLIENTE
WABCO NON FORNISCE NESSUNA GARAZIA SULLE DIFETTI DI SISTEMA DI CONNETTORI

PRODUCTION FACILITY FERTIGUNGSEINRICHTUNG

STATUS OF DEVELOPMENT / QUALITY ENTWICKLUNGS- / QUALITAETS- STAND

ZF CV Systems Hannover GmbH,
Gartenstraße 1,
31028 Gronau (Leine)
Germany

COMPRESSORAGGREGAT

BARCODE - WABCO CODE 2/5 INTERLEAVED /MODUL 10

4154033230JMMTT1234

WABCO 003 JMMV KOMPRESSORAGGREGAT SERIAL NUMBER FORTSCHRITZHAHL

WABCO IDENTIFICATION NUMBER DATE OF MANUFACTURE (YYMMDD) WABCO IDENTIFIKATIONS-NUMMER HERSTELLDATUM (JJMMTT)

WABCO IDENTIFICATION NUMBER DATE OF MANUFACTURE (YYMMDD) WABCO IDENTIFIKATIONS-NUMMER HERSTELLDATUM (JJMMTT)

General Specification: ISO 8015, ISO 8016, ISO 8017, ISO 8018, ISO 8019, ISO 8020, ISO 8021, ISO 8022, ISO 8023, ISO 8024, ISO 8025, ISO 8026, ISO 8027, ISO 8028, ISO 8029, ISO 8030, ISO 8031, ISO 8032, ISO 8033, ISO 8034, ISO 8035, ISO 8036, ISO 8037, ISO 8038, ISO 8039, ISO 8040, ISO 8041, ISO 8042, ISO 8043, ISO 8044, ISO 8045, ISO 8046, ISO 8047, ISO 8048, ISO 8049, ISO 8050, ISO 8051, ISO 8052, ISO 8053, ISO 8054, ISO 8055, ISO 8056, ISO 8057, ISO 8058, ISO 8059, ISO 8060, ISO 8061, ISO 8062, ISO 8063, ISO 8064, ISO 8065, ISO 8066, ISO 8067, ISO 8068, ISO 8069, ISO 8070, ISO 8071, ISO 8072, ISO 8073, ISO 8074, ISO 8075, ISO 8076, ISO 8077, ISO 8078, ISO 8079, ISO 8080, ISO 8081, ISO 8082, ISO 8083, ISO 8084, ISO 8085, ISO 8086, ISO 8087, ISO 8088, ISO 8089, ISO 8090, ISO 8091, ISO 8092, ISO 8093, ISO 8094, ISO 8095, ISO 8096, ISO 8097, ISO 8098, ISO 8099, ISO 8100, ISO 8101, ISO 8102, ISO 8103, ISO 8104, ISO 8105, ISO 8106, ISO 8107, ISO 8108, ISO 8109, ISO 8110, ISO 8111, ISO 8112, ISO 8113, ISO 8114, ISO 8115, ISO 8116, ISO 8117, ISO 8118, ISO 8119, ISO 8120, ISO 8121, ISO 8122, ISO 8123, ISO 8124, ISO 8125, ISO 8126, ISO 8127, ISO 8128, ISO 8129, ISO 8130, ISO 8131, ISO 8132, ISO 8133, ISO 8134, ISO 8135, ISO 8136, ISO 8137, ISO 8138, ISO 8139, ISO 8140, ISO 8141, ISO 8142, ISO 8143, ISO 8144, ISO 8145, ISO 8146, ISO 8147, ISO 8148, ISO 8149, ISO 8150, ISO 8151, ISO 8152, ISO 8153, ISO 8154, ISO 8155, ISO 8156, ISO 8157, ISO 8158, ISO 8159, ISO 8160, ISO 8161, ISO 8162, ISO 8163, ISO 8164, ISO 8165, ISO 8166, ISO 8167, ISO 8168, ISO 8169, ISO 8170, ISO 8171, ISO 8172, ISO 8173, ISO 8174, ISO 8175, ISO 8176, ISO 8177, ISO 8178, ISO 8179, ISO 8180, ISO 8181, ISO 8182, ISO 8183, ISO 8184, ISO 8185, ISO 8186, ISO 8187, ISO 8188, ISO 8189, ISO 8190, ISO 8191, ISO 8192, ISO 8193, ISO 8194, ISO 8195, ISO 8196, ISO 8197, ISO 8198, ISO 8199, ISO 8200, ISO 8201, ISO 8202, ISO 8203, ISO 8204, ISO 8205, ISO 8206, ISO 8207, ISO 8208, ISO 8209, ISO 8210, ISO 8211, ISO 8212, ISO 8213, ISO 8214, ISO 8215, ISO 8216, ISO 8217, ISO 8218, ISO 8219, ISO 8220, ISO 8221, ISO 8222, ISO 8223, ISO 8224, ISO 8225, ISO 8226, ISO 8227, ISO 8228, ISO 8229, ISO 8230, ISO 8231, ISO 8232, ISO 8233, ISO 8234, ISO 8235, ISO 8236, ISO 8237, ISO 8238, ISO 8239, ISO 8240, ISO 8241, ISO 8242, ISO 8243, ISO 8244, ISO 8245, ISO 8246, ISO 8247, ISO 8248, ISO 8249, ISO 8250, ISO 8251, ISO 8252, ISO 8253, ISO 8254, ISO 8255, ISO 8256, ISO 8257, ISO 8258, ISO 8259, ISO 8260, ISO 8261, ISO 8262, ISO 8263, ISO 8264, ISO 8265, ISO 8266, ISO 8267, ISO 8268, ISO 8269, ISO 8270, ISO 8271, ISO 8272, ISO 8273, ISO 8274, ISO 8275, ISO 8276, ISO 8277, ISO 8278, ISO 8279, ISO 8280, ISO 8281, ISO 8282, ISO 8283, ISO 8284, ISO 8285, ISO 8286, ISO 8287, ISO 8288, ISO 8289, ISO 8290, ISO 8291, ISO 8292, ISO 8293, ISO 8294, ISO 8295, ISO 8296, ISO 8297, ISO 8298, ISO 8299, ISO 8300, ISO 8301, ISO 8302, ISO 8303, ISO 8304, ISO 8305, ISO 8306, ISO 8307, ISO 8308, ISO 8309, ISO 8310, ISO 8311, ISO 8312, ISO 8313, ISO 8314, ISO 8315, ISO 8316, ISO 8317, ISO 8318, ISO 8319, ISO 8320, ISO 8321, ISO 8322, ISO 8323, ISO 8324, ISO 8325, ISO 8326, ISO 8327, ISO 8328, ISO 8329, ISO 8330, ISO 8331, ISO 8332, ISO 8333, ISO 8334, ISO 8335, ISO 8336, ISO 8337, ISO 8338, ISO 8339, ISO 8340, ISO 8341, ISO 8342, ISO 8343, ISO 8344, ISO 8345, ISO 8346, ISO 8347, ISO 8348, ISO 8349, ISO 8350, ISO 8351, ISO 8352, ISO 8353, ISO 8354, ISO 8355, ISO 8356, ISO 8357, ISO 8358, ISO 8359, ISO 8360, ISO 8361, ISO 8362, ISO 8363, ISO 8364, ISO 8365, ISO 8366, ISO 8367, ISO 8368, ISO 8369, ISO 8370, ISO 8371, ISO 8372, ISO 8373, ISO 8374, ISO 8375, ISO 8376, ISO 8377, ISO 8378, ISO 8379, ISO 8380, ISO 8381, ISO 8382, ISO 8383, ISO 8384, ISO 8385, ISO 8386, ISO 8387, ISO 8388, ISO 8389, ISO 8390, ISO 8391, ISO 8392, ISO 8393, ISO 8394, ISO 8395, ISO 8396, ISO 8397, ISO 8398, ISO 8399, ISO 8400, ISO 8401, ISO 8402, ISO 8403, ISO 8404, ISO 8405, ISO 8406, ISO 8407, ISO 8408, ISO 8409, ISO 8410, ISO 8411, ISO 8412, ISO 8413, ISO 8414, ISO 8415, ISO 8416, ISO 8417, ISO 8418, ISO 8419, ISO 8420, ISO 8421, ISO 8422, ISO 8423, ISO 8424, ISO 8425, ISO 8426, ISO 8427, ISO 8428, ISO 8429, ISO 8430, ISO 8431, ISO 8432, ISO 8433, ISO 8434, ISO 8435, ISO 8436, ISO 8437, ISO 8438, ISO 8439, ISO 8440, ISO 8441, ISO 8442, ISO 8443, ISO 8444, ISO 8445, ISO 8446, ISO 8447, ISO 8448, ISO 8449, ISO 8450, ISO 8451, ISO 8452, ISO 8453, ISO 8454, ISO 8455, ISO 8456, ISO 8457, ISO 8458, ISO 8459, ISO 8460, ISO 8461, ISO 8462, ISO 8463, ISO 8464, ISO 8465, ISO 8466, ISO 8467, ISO 8468, ISO 8469, ISO 8470, ISO 8471, ISO 8472, ISO 8473, ISO 8474, ISO 8475, ISO 8476, ISO 8477, ISO 8478, ISO 8479, ISO 8480, ISO 8481, ISO 8482, ISO 8483, ISO 8484, ISO 8485, ISO 8486, ISO 8487, ISO 8488, ISO 8489, ISO 8490, ISO 8491, ISO 8492, ISO 8493, ISO 8494, ISO 8495, ISO 8496, ISO 8497, ISO 8498, ISO 8499, ISO 8500, ISO 8501, ISO 8502, ISO 8503, ISO 8504, ISO 8505, ISO 8506, ISO 8507, ISO 8508, ISO 8509, ISO 8510, ISO 8511, ISO 8512, ISO 8513, ISO 8514, ISO 8515, ISO 8516, ISO 8517, ISO 8518, ISO 8519, ISO 8520, ISO 8521, ISO 8522, ISO 8523, ISO 8524, ISO 8525, ISO 8526, ISO 8527, ISO 8528, ISO 8529, ISO 8530, ISO 8531, ISO 8532, ISO 8533, ISO 8534, ISO 8535, ISO 8536, ISO 8537, ISO 8538, ISO 8539, ISO 8540, ISO 8541, ISO 8542, ISO 8543, ISO 8544, ISO 8545, ISO 8546, ISO 8547, ISO 8548, ISO 8549, ISO 8550, ISO 8551, ISO 8552, ISO 8553, ISO 8554, ISO 8555, ISO 8556, ISO 8557, ISO 8558, ISO 8559, ISO 8560, ISO 8561, ISO 8562, ISO 8563, ISO 8564, ISO 8565, ISO 8566, ISO 8567, ISO 8568, ISO 8569, ISO 8570, ISO 8571, ISO 8572, ISO 8573, ISO 8574, ISO 8575, ISO 8576, ISO 8577, ISO 8578, ISO 8579, ISO 8580, ISO 8581, ISO 8582, ISO 8583, ISO 8584, ISO 8585, ISO 8586, ISO 8587, ISO 8588, ISO 8589, ISO 8590, ISO 8591, ISO 8592, ISO 8593, ISO 8594, ISO 8595, ISO 8596, ISO 8597, ISO 8598, ISO 8599, ISO 8600, ISO 8601, ISO 8602, ISO 8603, ISO 8604, ISO 8605, ISO 8606, ISO 8607, ISO 8608, ISO 8609, ISO 8610, ISO 8611, ISO 8612, ISO 8613, ISO 8614, ISO 8615, ISO 8616, ISO 8617, ISO 8618, ISO 8619, ISO 8620, ISO 8621, ISO 8622, ISO 8623, ISO 8624, ISO 8625, ISO 8626, ISO 8627, ISO 8628, ISO 8629, ISO 8630, ISO 8631, ISO 8632, ISO 8633, ISO 8634, ISO 8635, ISO 8636, ISO 8637, ISO 8638, ISO 8639, ISO 8640, ISO 8641, ISO 8642, ISO 8643, ISO 8644, ISO 8645, ISO 8646, ISO 8647, ISO 8648, ISO 8649, ISO 8650, ISO 8651, ISO 8652, ISO 8653, ISO 8654, ISO 8655, ISO 8656, ISO 8657, ISO 8658, ISO 8659, ISO 8660, ISO 8661, ISO 8662, ISO 8663, ISO 8664, ISO 8665, ISO 8666, ISO 8667, ISO 8668, ISO 8669, ISO 8670, ISO 8671, ISO 8672, ISO 8673, ISO 8674, ISO 8675, ISO 8676, ISO 8677, ISO 8678, ISO 8679, ISO 8680, ISO 8681, ISO 8682, ISO 8683, ISO 8684, ISO 8685, ISO 8686, ISO 8687, ISO 8688, ISO 8689, ISO 8690, ISO 8691, ISO 8692, ISO 8693, ISO 8694, ISO 8695, ISO 8696, ISO 8697, ISO 8698, ISO 8699, ISO 8700, ISO 8701, ISO 8702, ISO 8703, ISO 8704, ISO 8705, ISO 8706, ISO 8707, ISO 8708, ISO 8709, ISO 8710, ISO 8711, ISO 8712, ISO 8713, ISO 8714, ISO 8715, ISO 8716, ISO 8717, ISO 8718, ISO 8719, ISO 8720, ISO 8721, ISO 8722, ISO 8723, ISO 8724, ISO 8725, ISO 8726, ISO 8727, ISO 8728, ISO 8729, ISO 8730, ISO 8731, ISO 8732, ISO 8733, ISO 8734, ISO 8735, ISO 8736, ISO 8737, ISO 8738, ISO 8739, ISO 8740, ISO 8741, ISO 8742, ISO 8743, ISO 8744, ISO 8745, ISO 8746, ISO 8747, ISO 8748, ISO 8749, ISO 8750, ISO 8751, ISO 8752, ISO 8753, ISO 8754, ISO 8755, ISO 8756, ISO 8757, ISO 8758, ISO 8759, ISO 8760, ISO 8761, ISO 8762, ISO 8763, ISO 8764, ISO 8765, ISO 8766, ISO 8767, ISO 8768, ISO 8769, ISO 8770, ISO 8771, ISO 8772, ISO 8773, ISO 8774, ISO 8775, ISO 8776, ISO 8777, ISO 8778, ISO 8779, ISO 8780, ISO 8781, ISO 8782, ISO 8783, ISO 8784, ISO 8785, ISO 8786, ISO 8787, ISO 8788, ISO 8789, ISO 8790, ISO 8791, ISO 8792, ISO 8793, ISO 8794, ISO 8795, ISO 8796, ISO 8797, ISO 8798, ISO 8799, ISO 8800, ISO 8801, ISO 8802, ISO 8803, ISO 8804, ISO 8805, ISO 8806, ISO 8807, ISO 8808, ISO 8809, ISO 8810, ISO 8811, ISO 8812, ISO 8813, ISO 8814, ISO 8815, ISO 8816, ISO 8817, ISO 8818, ISO 8819, ISO 8820, ISO 8821, ISO 8822, ISO 8823, ISO 8824, ISO 8825, ISO 8826, ISO 8827, ISO 8828, ISO 8829, ISO 8830, ISO 8831, ISO 8832, ISO 8833, ISO 8834, ISO 8835, ISO 8836, ISO 8837, ISO 8838, ISO 8839, ISO 8840, ISO 8841, ISO 8842, ISO 8843, ISO 8844, ISO 8845, ISO 8846, ISO 8847, ISO 8848, ISO 8849, ISO 8850, ISO 8851, ISO 8852, ISO 8853, ISO 8854, ISO 8855, ISO 8856, ISO 8857, ISO 8858, ISO 8859, ISO 8860, ISO 8861, ISO 8862, ISO 8863, ISO 8864, ISO 8865, ISO 8866, ISO 8867, ISO 8868, ISO 8869, ISO 8870, ISO 8871, ISO 8872, ISO 8873, ISO 8874, ISO 8875, ISO 8876, ISO 8877, ISO 8878, ISO 8879, ISO 8880, ISO 8881, ISO 8882, ISO 8883, ISO 8884, ISO 8885, ISO 8886, ISO 8887, ISO 8888, ISO 8889, ISO 8890, ISO 8891, ISO 8892, ISO 8893, ISO 8894, ISO 8895, ISO 8896, ISO 8897, ISO 8898, ISO 8899, ISO 8900, ISO 8901, ISO 8902, ISO 8903, ISO 8904, ISO 8905, ISO 8906, ISO 8907, ISO 8908, ISO 8909, ISO 8910, ISO 8911, ISO 8912, ISO 8913, ISO 8914, ISO 8915, ISO 8916, ISO 8917, ISO 8918, ISO 8919, ISO 8920, ISO 8921, ISO 8922, ISO 8923, ISO 8924, ISO 8925, ISO 8926, ISO 8927, ISO 8928, ISO 8929, ISO 8930, ISO 8931, ISO 8932, ISO 8933, ISO 8934, ISO 8935, ISO 8936, ISO 8937, ISO 8938, ISO 8939, ISO 8940, ISO 8941, ISO 8942, ISO 8943, ISO 8944, ISO 8945, ISO 8946, ISO 8947, ISO 8948, ISO 8949, ISO 8950, ISO 8951, ISO 8952, ISO 8953, ISO 8954, ISO 8955, ISO 8956, ISO 8957, ISO 8958, ISO 8959, ISO 8960, ISO 8961, ISO 8962, ISO 8963, ISO 8964, ISO 8965, ISO 8966, ISO 8967, ISO 8968, ISO 8969, ISO 8970, ISO 8971, ISO 8972, ISO 8973, ISO 8974, ISO 8975, ISO 8976, ISO 8977, ISO 8978, ISO 8979, ISO 8980, ISO 8981, ISO 8982, ISO 8983, ISO 8984, ISO 8985, ISO 8986, ISO 8987, ISO 8988, ISO 8989, ISO 8990, ISO 8991, ISO 8992, ISO 8993, ISO 8994, ISO 8995, ISO 8996, ISO 8997, ISO 8998, ISO 8999, ISO 9000, ISO 9001, ISO 9002, ISO 9003, ISO 9004, ISO 9005, ISO 9006, ISO 9007, ISO 9008, ISO 9009, ISO 9010, ISO 9011, ISO 9012, ISO 9013, ISO 9014, ISO 9015, ISO 9016, ISO 9017, ISO 9018, ISO 9019, ISO 9020, ISO 9021, ISO 9022, ISO 9023, ISO 9024, ISO 9025, ISO 9026, ISO 9027, ISO 9028, ISO 9029, ISO 9030, ISO 9031, ISO 9032, ISO 9033, ISO 9034, ISO 9035, ISO 9036, ISO 9037, ISO 9038, ISO 9039, ISO 9040, ISO 9041, ISO 9042, ISO 9043, ISO 9044, ISO 9045, ISO 9046, ISO 9047, ISO 9048, ISO 9049, ISO 9050, ISO 9051, ISO 9052, ISO 9053, ISO 9054, ISO 9055, ISO 9056, ISO 9057, ISO 9058, ISO 9059, ISO 9060, ISO 9061, ISO 9062, ISO 9063, ISO 9064, ISO 9065, ISO 9066, ISO 9067, ISO 9068, ISO 9069, ISO 9070, ISO 9071, ISO 9072, ISO 9073, ISO 9074, ISO 9075, ISO 9076, ISO 9077, ISO 9078, ISO 9079, ISO 9080, ISO 9081, ISO 9082, ISO 9083, ISO 9084, ISO 9085, ISO 9086, ISO 9087, ISO 9088, ISO 9089, ISO 9090, ISO 9091, ISO 9092, ISO 9093, ISO 9094, ISO 9095, ISO 9096, ISO 9097, ISO 9098, ISO 9099, ISO 9100, ISO 9101, ISO 9102, ISO 9103, ISO 9104, ISO 9105, ISO 9106, ISO 9107, ISO 9108, ISO 9109, ISO 9110, ISO 9111, ISO 9112, ISO 9113, ISO 9114, ISO 9115, ISO 9116, ISO 9117, ISO 9118, ISO 9119, ISO 9120, ISO 9121, ISO 9122, ISO 9123, ISO 9124, ISO 9125, ISO 9126, ISO 9127, ISO 9128, ISO 9129, ISO 9130, ISO 9131, ISO 9132, ISO 9133, ISO 9134, ISO 9135, ISO 9136, ISO 9137, ISO 9138, ISO 9139, ISO 9140, ISO 9141, ISO 9142, ISO 9143, ISO 9144, ISO 9145, ISO 9146, ISO 9147, ISO 9148, ISO 9149, ISO 9150, ISO 9151, ISO 9152, ISO 9153, ISO 9154, ISO 9155, ISO 9156, ISO 9157, ISO 9158, ISO 9159, ISO 9160, ISO 9161, ISO 9162, ISO 9163, ISO 9164, ISO 9165, ISO 9166, ISO 9167, ISO 9168, ISO 9169, ISO 9170, ISO 9171, ISO 9172, ISO 9173, ISO 9174, ISO 9175, ISO 9176, ISO 9177, ISO 9178, ISO 9179, ISO 9180, ISO 9181, ISO 9