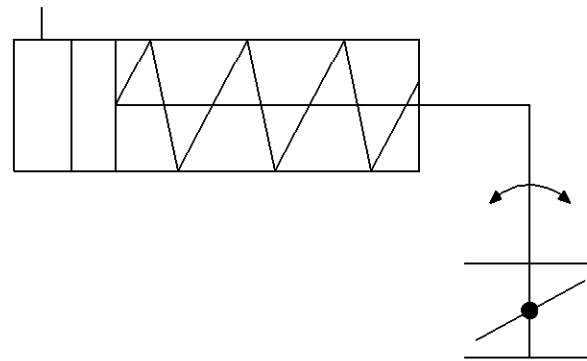
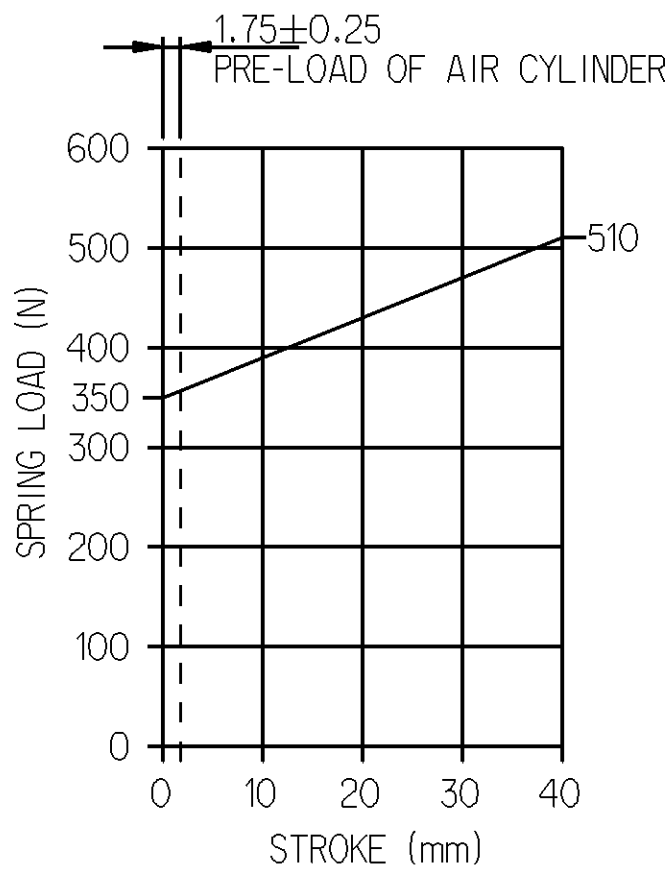
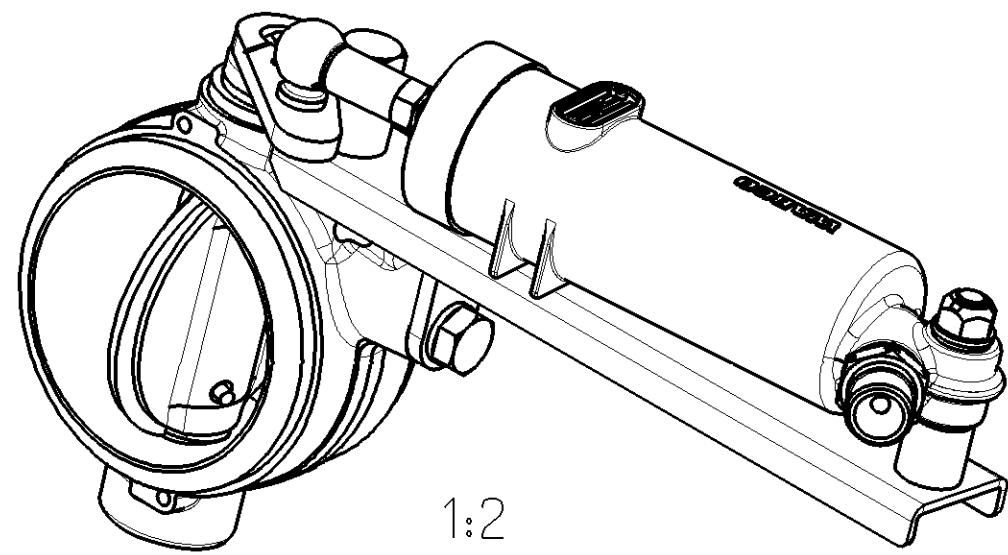
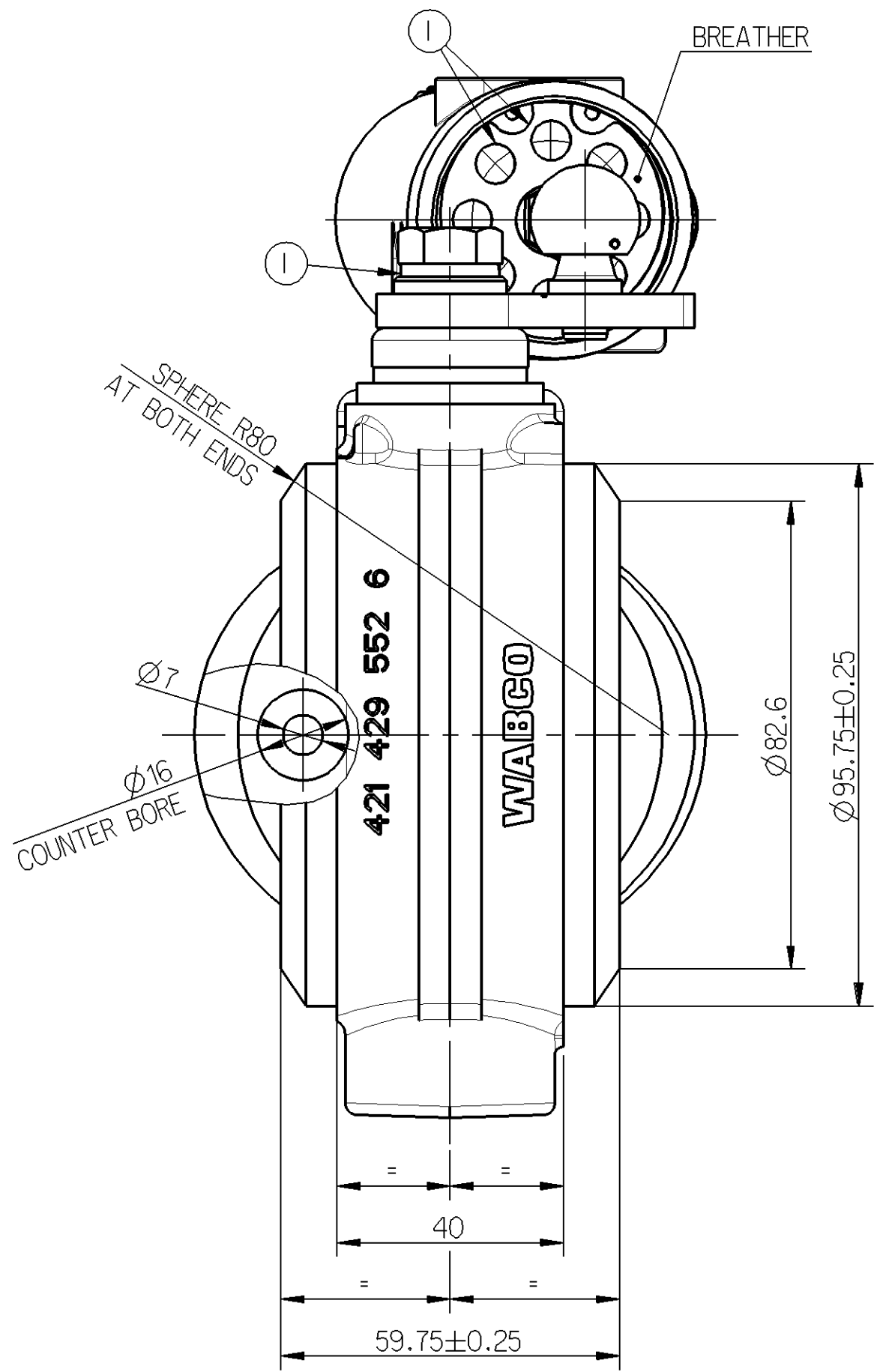
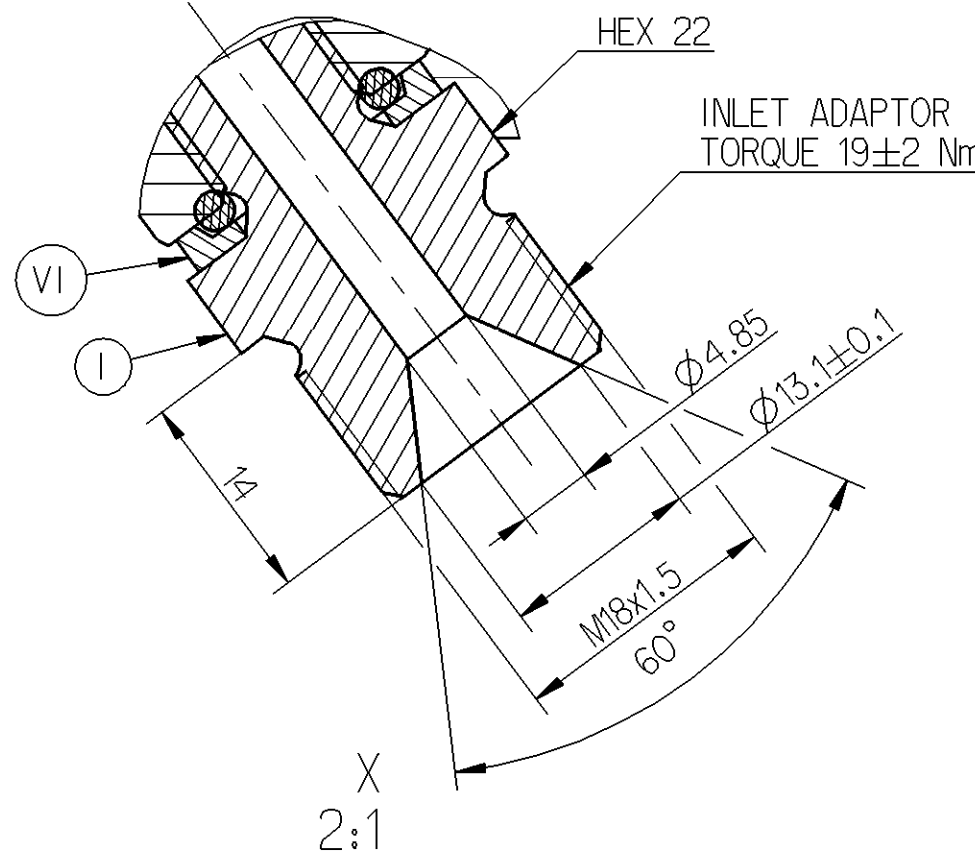
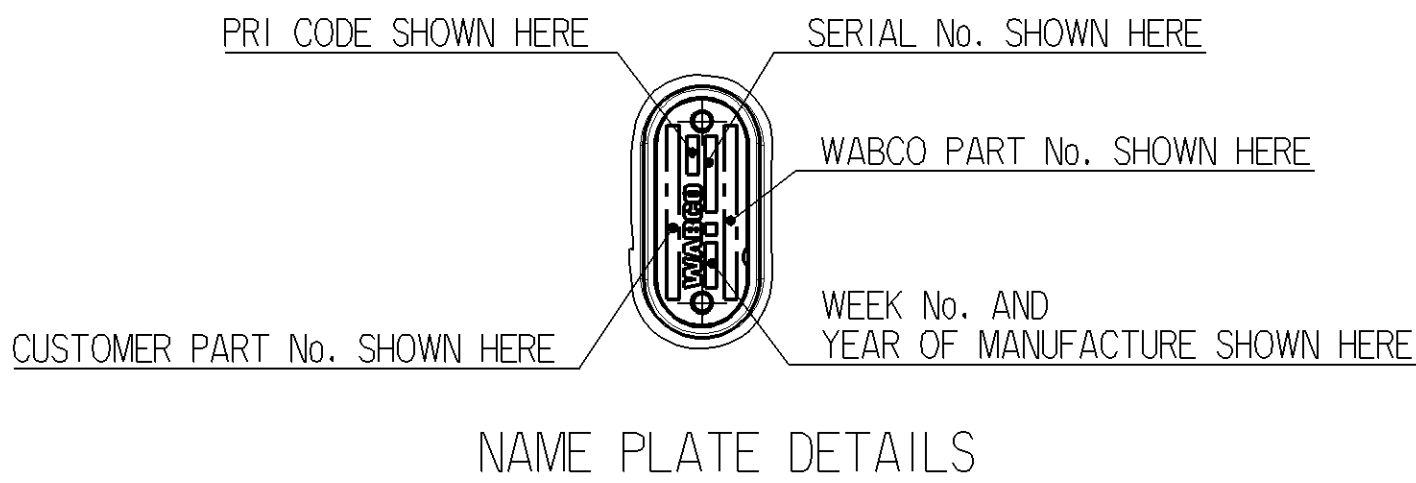
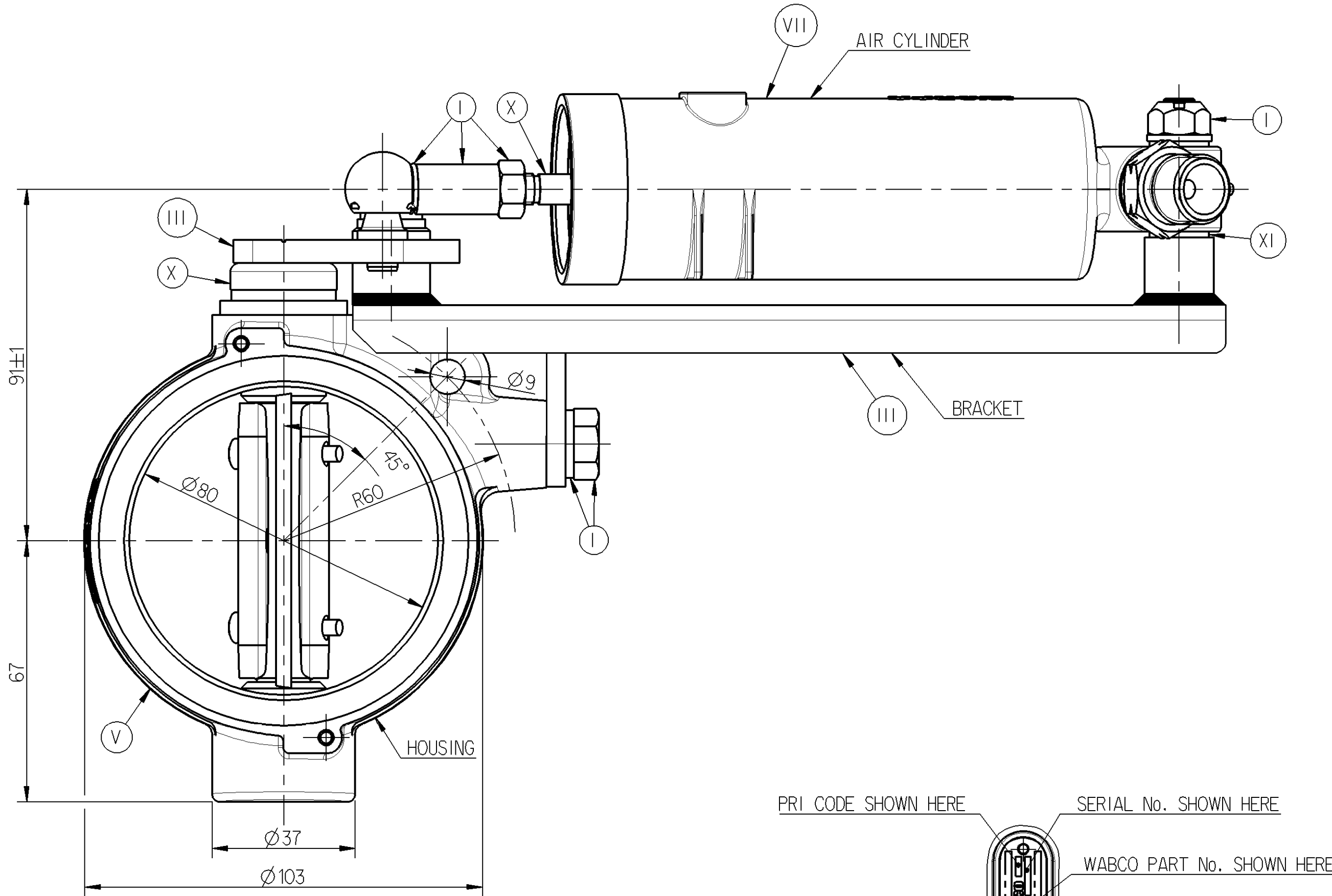
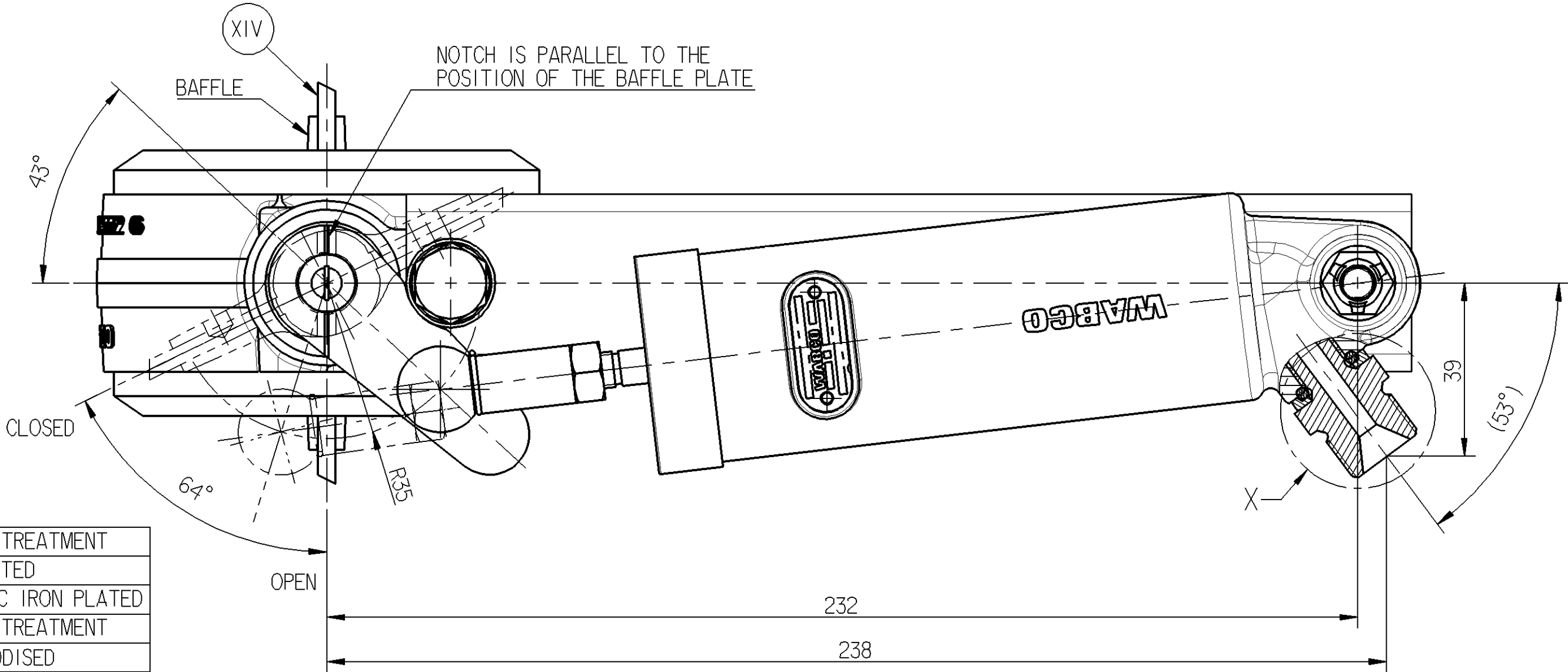


Non è permesso copiare o riprodurre questo documento, né utilizzare il contenuto o renderlo comunque noto a terzi senza permesso scritto dalla WABCO. È vietata espressamente la ristampa, la traduzione, la diffusione o l'uso non autorizzato senza permesso scritto dalla WABCO. Toute communication ou reproduction de ce document, toute exploitation ou communication de son contenu sont interdites, sauf autorisation écrite de la WABCO. Toute utilisation non autorisée du contenu de ce document est formellement interdite. Toute réimpression, toute traduction, toute diffusion ou utilisation non autorisée sans la permission écrite de la WABCO est formellement interdite. All rights reserved. No part of this document may be reproduced, stored in a retrieval system, or transmitted, in any form or by any means, electronic, mechanical, photocopying, recording, or by any information storage and retrieval system, without prior written permission from WABCO. Nachdruck, Vervielfältigung und Verbreitung, auch auszugsweise, ist ohne schriftliche Genehmigung der WABCO. All rights reserved. No part of this document may be reproduced, stored in a retrieval system, or transmitted, in any form or by any means, electronic, mechanical, photocopying, recording, or by any information storage and retrieval system, without prior written permission from WABCO.

PART CODE	MATERIAL	SURFACE PROTECTION
XVII	STEEL	NO TREATMENT
XVI	CAST IRON	PLATED
XV	STEEL	ZINC IRON PLATED
XIV	CAST IRON	NO TREATMENT
XIII	ZINC ALLOY	ANODISED
XII	PLASTIC	NO TREATMENT
XI	RUBBER	NO TREATMENT
X	STAINLESS STEEL	NO TREATMENT
IX	BRASS	NO TREATMENT
VIII	ZINC ALLOY	CHROMATED
VII	ALUMINIUM ALLOY	ANODISED
VI	ALUMINIUM ALLOY	CHROMATED
V	CAST IRON	PAINTED
IV	STEEL	POWDER COATED
III	STEEL	PAINTED
II	STEEL	PHOSPHATED
I	STEEL	ZINC PLATED



SI No.	PRODUCT SPECIFICATION No.	NOTES
1	PRODUCT SPECIFICATION No.	PS 421 429 027 0
2	WORKING MEDIUM	AIR
3	NORMAL WORKING PRESSURE	8 bar
4	MAXIMUM WORKING PRESSURE	10 bar
5	THERMAL RANGE OF APPLICATION	+30°C TO +150°C
6	AIR CYLINDER BORE DIAMETER	40 mm
7	STROKE	40.5±1.5 mm
8	SALT SPRAY TEST	300 HOURS OF NSS IS APPLICABLE FOR BRACKET, 240 HOURS MINIMUM OF NSS IS APPLICABLE FOR HOUSING, LEVER, ADAPTOR AND FASTENERS.
9	HOUSING IS PAINTED WITH HEAT AND OIL RESISTANT DOVE GREY PAINT TO IS:5 COLOUR No. 694	
10	MALE THREAD AND HOUSING ARE FITTED WITH CLOSURE SLEEVE AND CLOSURE COVERS RESPECTIVELY FOR STORAGE AND TRANSIT PURPOSES	
11	DURING INSTALLATION, ORIENT THE EXHAUST ASSEMBLY IN SUCH A WAY THAT THE AIR CYLINDER IS IN THE INCLINED CONDITION AND THE BREATHER PORTION IS FACING DOWNWARDS TOWARDS THE GROUND	
12	SERVICE LIFE TO FIRST OVERHAUL 2 YEARS / 180000 km WHICHEVER IS EARLIER FOR AIR DRYER OR DDU FITTED VEHICLE. 1 YEAR / 80000 km WHICHEVER IS EARLIER FOR NON AIR DRYER OR DDU FITTED VEHICLE.	

General Specifications: JED-334-0		Copyright WABCO®		WABCO	
Further Technical Data:		Date		Signature	
Doc. Code:		Sheet:		To:	
		2011-09-08		2011-09-09	
		Range of Nominal Dimensions (± mm)		Expert	
		Class		YOGESH	
		Fine		3	
		Medium		1:1 (2:1)	
		Coarse		A 1	
		Tapped Holes acc.		Pro/E	
		1) Tolerance Class Applied Crossmarked		ECN No.	
				Revision	
				Tech. Resp.	
				5580_WIN	
				Replacement for	
				/	