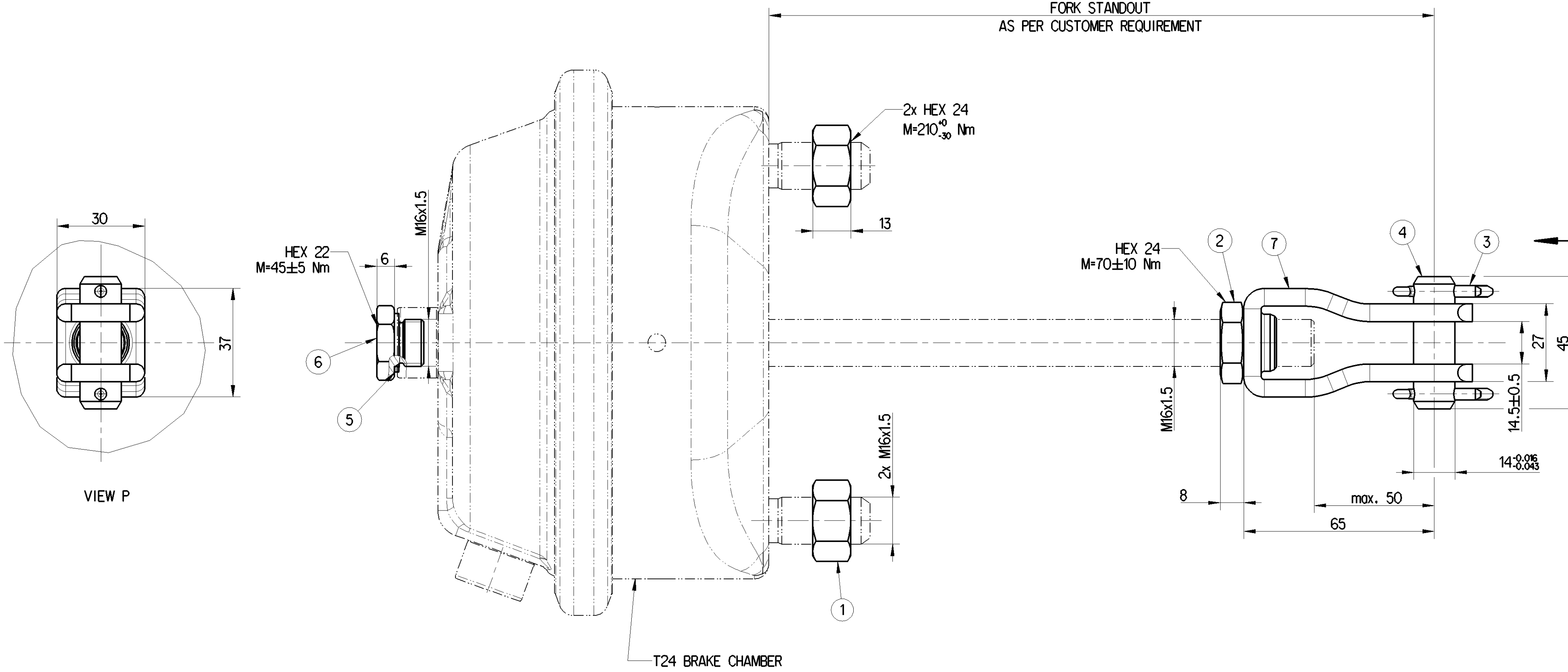


Non e permesso copiare, o terzi o riprodurre questo documento, ne utilizzare il contenuto o renderlo comunque noto o terzi senza autorizzazione esplicita. Ogni infrazione costituisce un evidente abuso e comportera il risarcimento dei danni subiti. E' fatta riserva di tutti i diritti derivanti da brevetti o modelli.

Copying of this document and giving it to others and the use or communication of the contents thereof, are forbidden without express authority. Contention of this restriction will constitute an evident abuse and result in a liability to the payment of damages. All rights are reserved in the event of the grant of patent or registration of a utility model or design. This document is the subject of copyright.

Toutte communication ou reproduction de ce document, toute exploitation ou communication de son contenu sont interdites, sauf autorisation expresse. Tout manquement a cette regle constitue un abus evident et expose son auteur au versement de dommages et interets. Tous droits de proprieete industrielle reserves, notamment en matiere de brevets et de modesles.

Wiedergabe sowie Vervielfältigung dieser Unterlagen, Verwertung und Mitteilung ihres Inhalts nicht gestattet, soweit nicht ausdrücklich ansonsten, zu wiederholenden Stellen eines öffentlichen Mitteilungsanstalt, Missbrauch der und verpflichten zu Schadensersatz. Alle Rechte für den Fall der Patentierung oder Gebrauchsmuster-Eintragung vorbehalten.



SL. NO.	ZF CVS PART NUMBER	DESCRIPTION	SURFACE PROTECTION	QTY (NOS.)	MASS PER UNIT (kg)
1	810 304 031 4	HEXAGON NUT DIN934 M16x1.5	ZINC OR ZINC ALLOY PASSIVATION	2	0.034
2	810 319 029 4	HEXAGON NUT DIN439 M16x1.5	ZINC OR ZINC ALLOY PASSIVATION	1	0.021
3	810 511 034 4	SPLIT PIN ISO1234 - 4x22 - S1	ZINC OR ZINC ALLOY PASSIVATION	2	0.003
4	810 601 097 4	FORK PIN DIN 1433 - 14F8 x 45	ZINC OR ZINC ALLOY PASSIVATION	1	0.050
5	811 401 057 4	SEALING RING DIN 7603 - A 16 x 20 - AI	NA	1	0.001
6	893 011 710 4	PLUG M16x1.5	ZINC OR ZINC ALLOY PASSIVATION	1	0.034
7	895 802 290 4	FORK	ZINC OR ZINC ALLOY PASSIVATION	1	0.223

**BRAKE CHAMBER SHOWN FOR REPRESENTATIONAL PURPOSE ONLY
IT IS NOT A PART OF THE PACKAGE**

**SUPPLY CONDITION:
ALL PARTS SUPPLIED SEPERATELY IN PACKAGE**

General Specification: ISO 8015, JED-334-1, Size ISO 14405 LP		Copyright ZF®			PACKAGE
Further Technical Data: -		Date	Signature		
Doc. Code: -	Sheet: To	2023-05-08	Viswanathan		
General Tolerances JED-261		Checked			
Range of nominal dimensions in mm		2023-05-08		Aranganarson A	
Class 1)	≤ 50	> 50 ≤ 180	> 180 ≤ 400	> 400	∠
Fine	±0.5	±1	±1.5	±2	±3°
Medium	±1	±2	±3	±4	
Coarse	±2	±3.5	±5	±6.5	
Tapped Holes acc. JED-152		Dimensions in mm			
Mass	Scale	Material No.		Date of first issue: 2023-05-08	
0.405 kg	1:1	423 000 534 2		Doc.Code	Language
Size	CAD System	ECN-No.		Revision	Techn. Resp.
A 2	CREO	-		-	5340
1) Tolerance Class Applied Crossmarked		-		Replacement for	