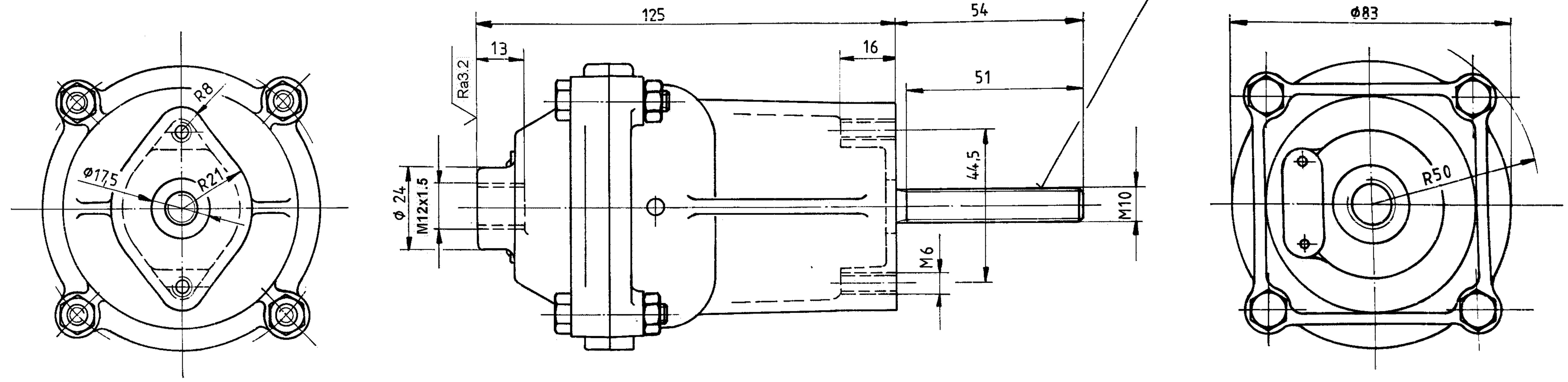
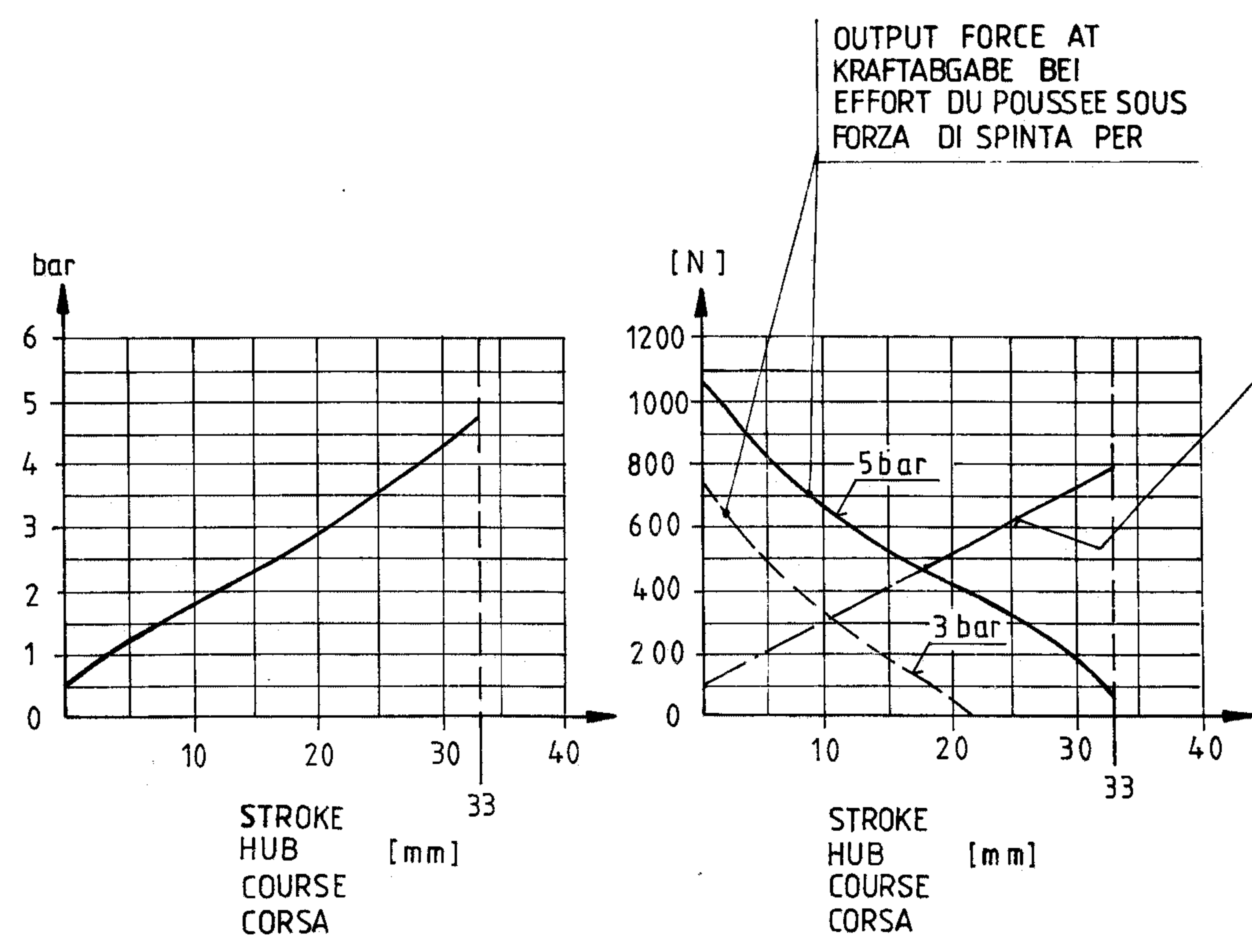


MISALIGNMENT OF PUSH ROD IN ANY DIRECTION  
 AUSLENKUNG DER DRUCKSTANGE ALLSEITIG  
 DEBATTEMENT DE LA TIGE EN TOUTES LES DIRECTION  
 DEVIAZIONE DELL'ASTA DI COMANDO IN TUTTE LE DIREZIONI  
 MAX. 2°



This document is the property of WABCO. It is not to be reproduced, stored in a retrieval system, or transmitted in any form or by any means, electronic, mechanical, photocopying, recording, or by any information storage and retrieval system, without the prior written permission of WABCO.

WORKING PRESSURE .....  
 BETRIEBSDRUCK ..... pe = MAX. 6 bar  
 PRESSION D'UTILISATION .....  
 PRESSIONE DI ESERCIZIO .....  
  
 THERMAL RANGE OF APPLICATION FROM  
 THERMISCHER ANWENDUNGSBEREICH VON  
 GAMME D'APPLICATION THERMIQUE DE  
 CAMPO DI APPLICAZIONE TERMICA DA  
 -40°C BIS +80°C  
  
 AIR VOLUME AT 33 OF STROKE  
 HUBVOLUMEN BEI 33 HUB  
 VOLUME D'AIR A 33 DE LA COURSE  
 VOLUME D'ARIA A 33 DELLA CORSA  
 80 cm<sup>3</sup>  
  
 MEDIUM AIR  
 MEDIUM DRUCKLUFT  
 FLUIDE AIR  
 FLUIDO ARIA



FORCE OF RETURN SPR  
 RUECKSTELLFEDERKRAFT  
 EFFORT DU RESSORT DE RAPPEL  
 FORZA DELLA MOLLA DI RITORNO

General Specification: JED-334-0		Copyright WABCO		<b>WABCO</b>	
Further Technical Data:		Date	Signature		
Doc. Code:	Sheet: To	Drawn	2010-01-28	BRAKE CHAMBER MEMBRANZYLINDER TYPE 3 VASE A DIAPHRAGME CYLINDRO FRENO A DIAFRAMMA	
General Tolerances JED-261		Checked	2010-01-28		
Range of Nominal Dimensions (± mm)		Expert			
Class	1l	RISCHER			
Material No.		Mass	Scale	Date of first issue: 1982-02-08	
423 020 017 0		0.65 kg	1:1	Doc. Code Language Sheet	
Tapped Holes acc.		A 2 CCD		005 ML 1/1	
1) Tolerance Class Applied Crossmarked		ECN-No. Revision Techn. Resp.		Replacement for	
		151871 1 x C 5340			