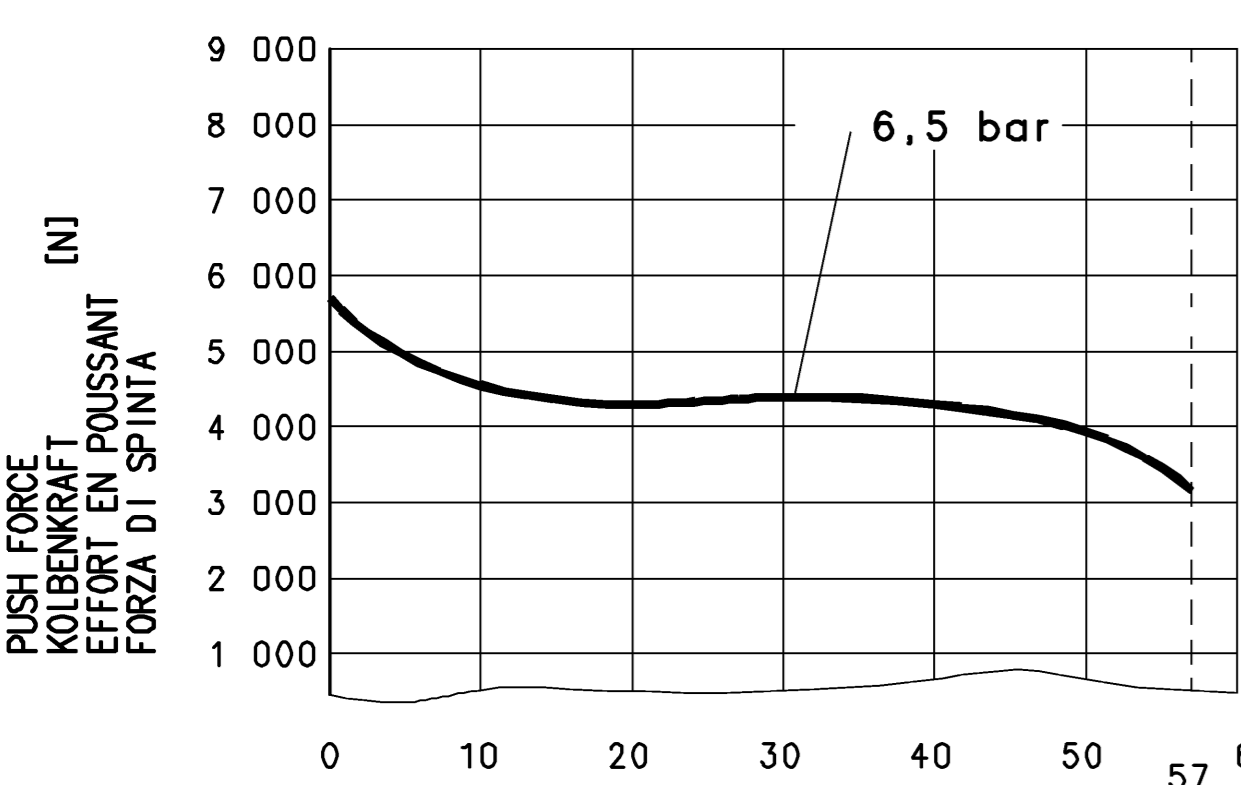
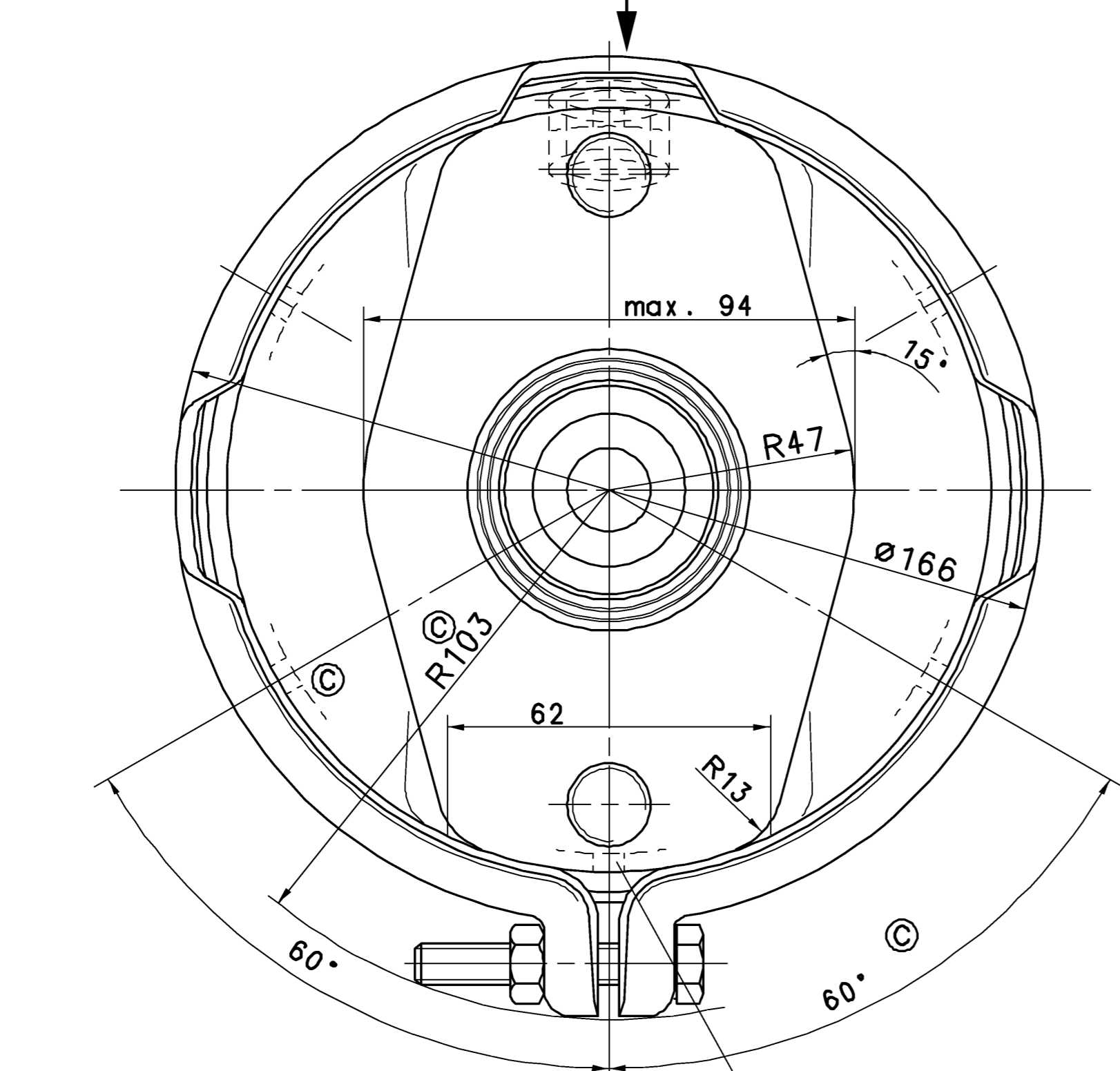
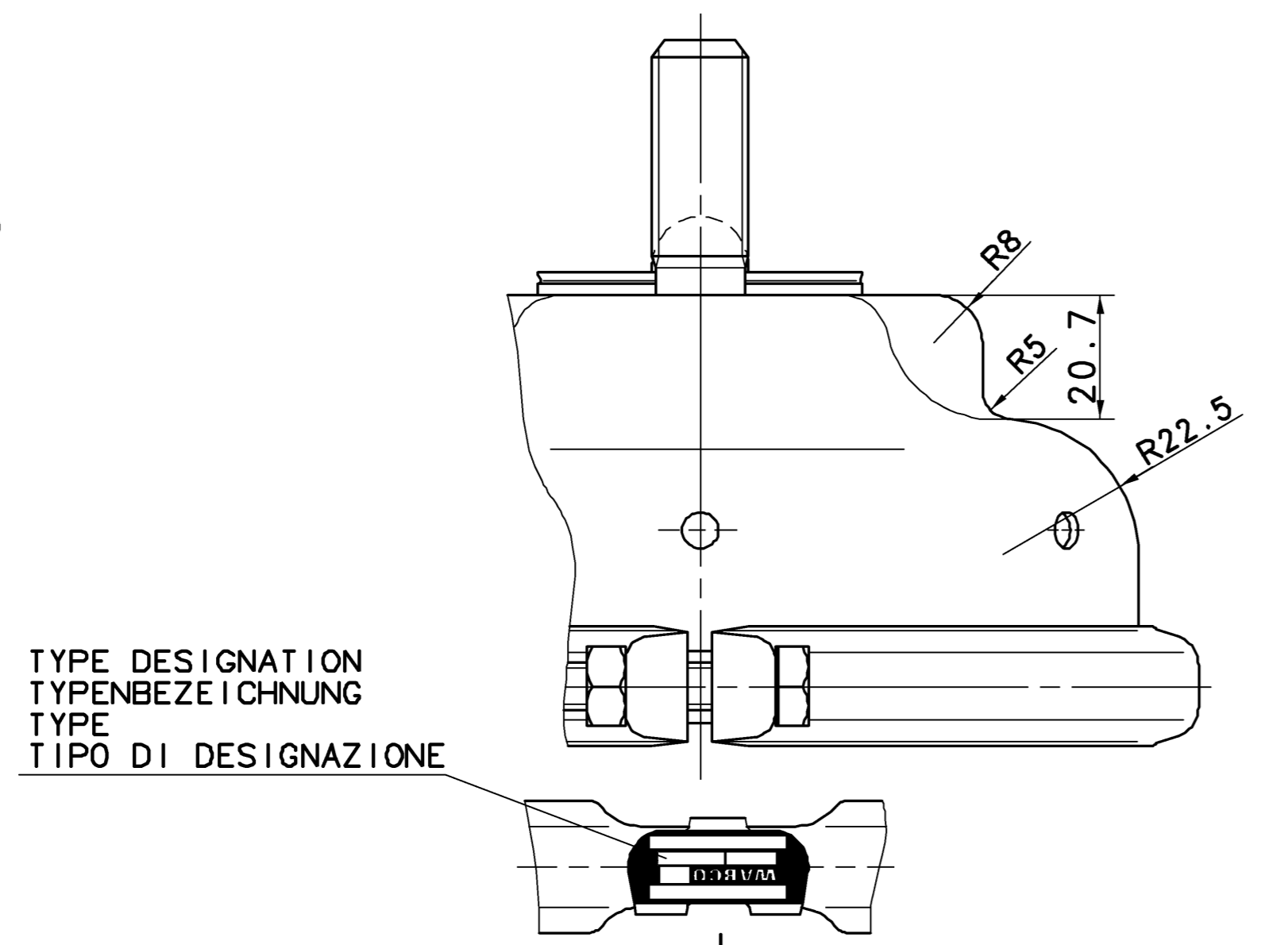
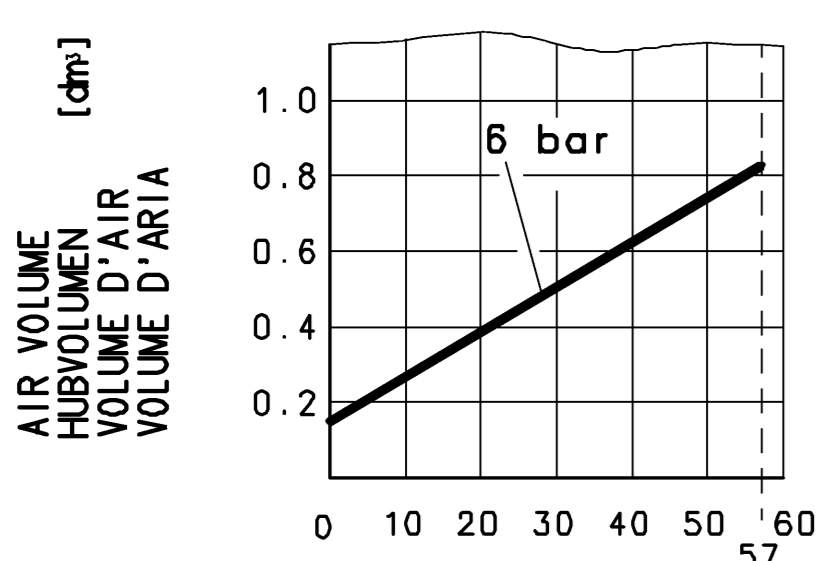


SURFACE PROTECT./OBERFL. SCHUTZ	
I	JED-240-3
II	JED-256-1
III	JED-371
IV	RUBBER/PLASTIC
V	JED-240-2

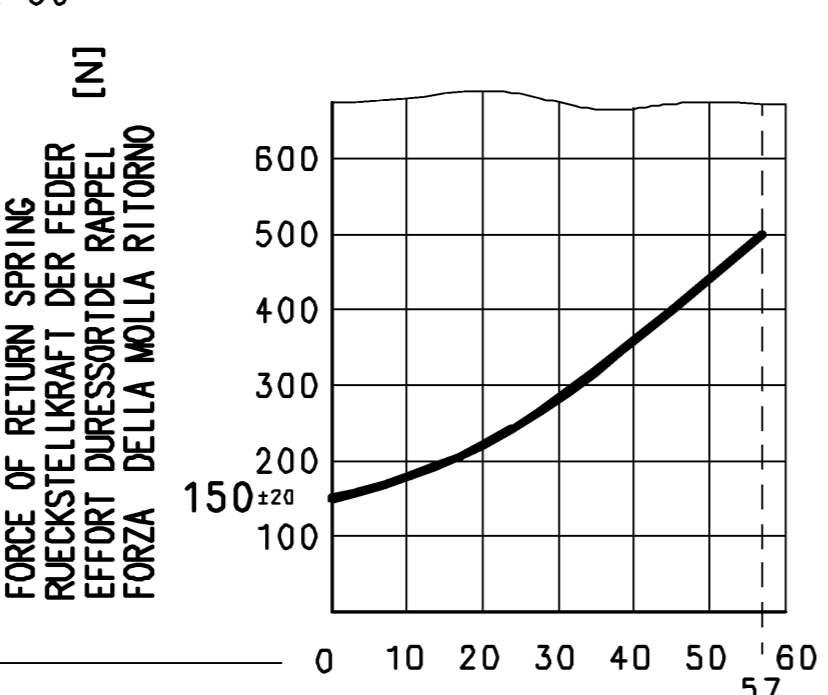


TO BE INSTALLED WITH LOWER BREATHER HOLE
IM EINBAUZUSTAND UNTERE ATMUNGSBOHRUNG
A MONTER AVEC LE RENIFLARD INFÉRIEUR
INSTALLAZIONE: CON IL FORO DI SFIATO INFERIORE

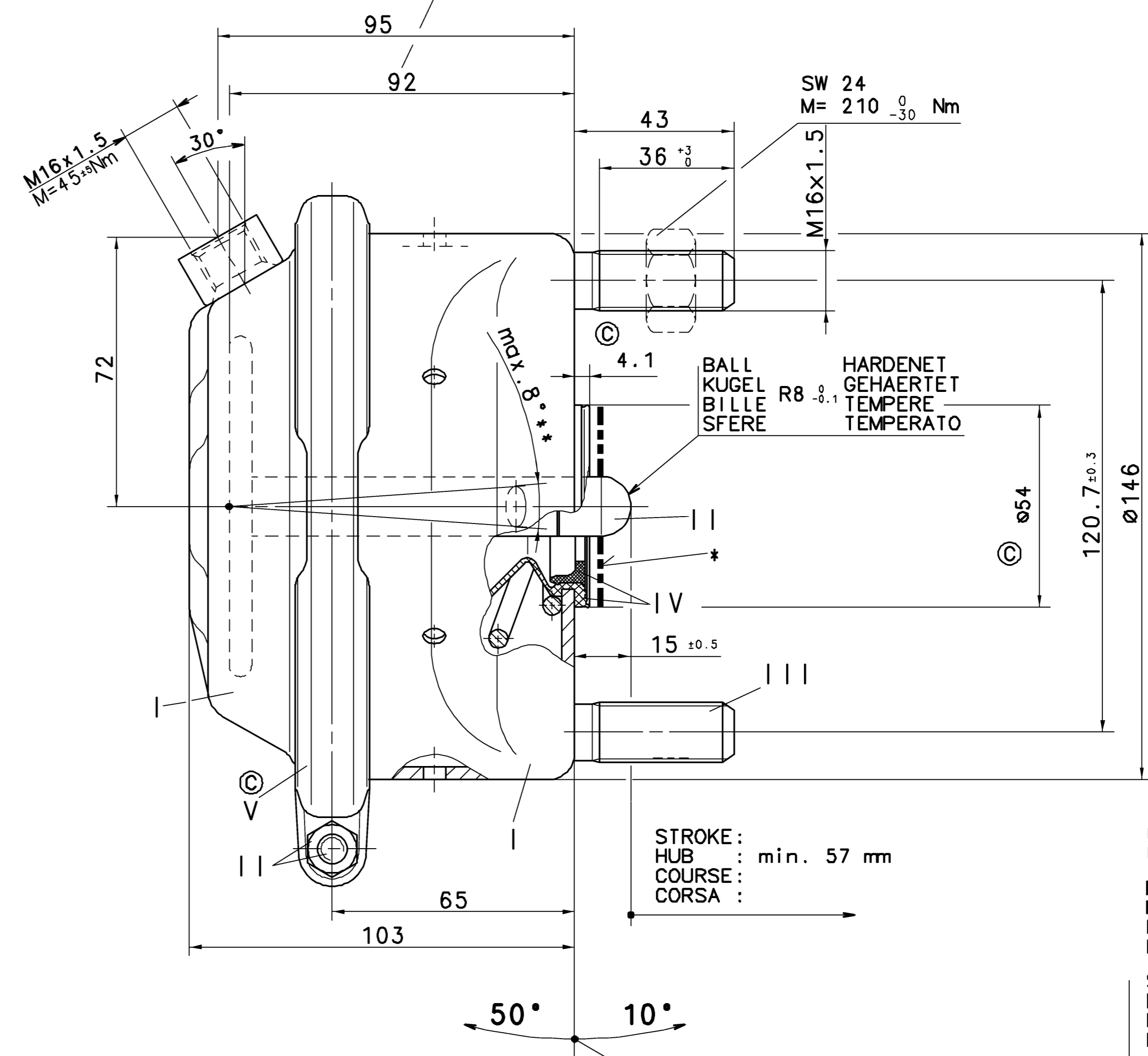
DEAD VOLUME AT
TOTVOLUMEN BEI 0 bar = 0.084 dm³
VOLUME MORT A
SPAZIO NOCIVO A



STROKE HUB
COURSE
CORSA [mm]



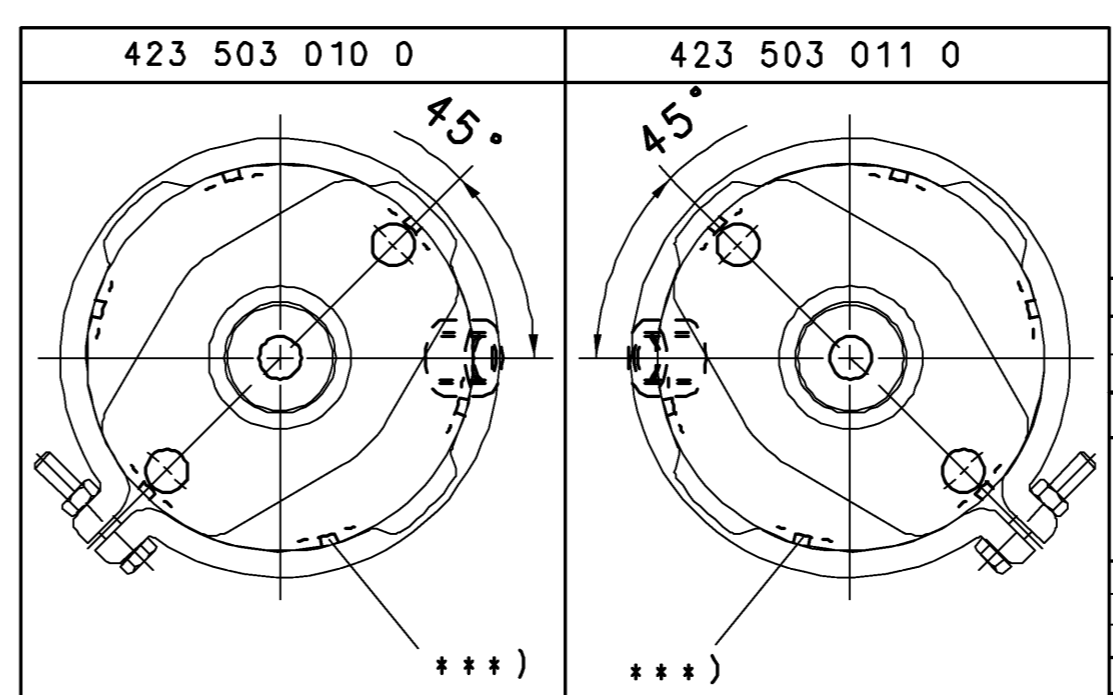
THEORETICAL SWIVEL POINT OF THE PUSH ROD
THEOR. SCHWENKPUNKT DER DRUCKSTANGE
CENTRE D'ARTICULATION THEORIQUE DE LA TIGE
CENTRO D'ARTICOLAZIONE TEORICO DELL'ASTA



STROKE:
HUB : min. 57 mm
COURSE :
CORSA :

ADMISSIBLE INSTALLATION POSITION
ZULAESSIGE EINBAULAGE
POSITION D'INSTALLATION ADMISE
POSIZIONE DI MONTAGGIO AMMESSA

MAIN VIEWS REFER TO DIMENSIONS ONLY
POSITION OF COMPONENTS SEE TABLE
HAUPTANSICHTEN BEZIEHEN SICH NUR AUF DIE ABMESSUNGEN
POSITION DER BAUTEILE SIEHE TABELLE
VUES PRINCIPALES CONCERNENT LES DIMENSIONS SEULEMENT
POSITION DES COMPOSANTS VOIR TABLEAU
VISTE PRINCIPALI RIGUARDANO DIMENSIONI SOLAMENTE
POSIZIONE DELLE COMPONENTI VEDERE TABELLA



- *) SEALING SURFACE
DICHTFLAECHE
SURFACE D' ETANCHEITE
SUPERFICI DI TENUTA
- **) DEFLECTION:
AUSLENKUNG: max. 8° AT STROKE
DEFLEXION: max. 8° BEI HUB 0 mm
DEVIAZIONE: A COURSE
A CORSA

- ** *) OPEN BREATHER HOLE
OFFEN ATMUNGSBOHRUNG 6xØ6
OUVERT TROU RENIFLEUR
APERTO FORO RESPIRATORE

WIDTH ACROSS FLATS
SW= SCHLUESSELWEITE
SURPLATS
LARGHEZZA IN CHIAVE

THERMAL RANGE OF APPLICATION :
THERMISCHER ANWENDUNGSBEREICH : -40 °C..+80 °C
GAMME D'APPLICATION THERMIQUE :
CAMPO DI APPLICAZIONE TERMICA :

MEDIUM : AIR
MEDIUM : LUFT
FLUIDE : AIR
FLUIDO : ARIA

SERVICE PRESSURE :
BETRIEBSDRUCK : Pe max. = 10 bar
PRESSION DE SERVICE :
PRESSIONE DI ESERCIZIO :

(TEMPORARILY)
(KURZZEITIG) : Pe max. = 13 bar
(DE COURTE DUREE)
(BREVE TEMPO SOLO):

GENERAL SPECIFICATION: JED-334		
FURTHER TECHNICAL DATA:		
DOC. CODE:	SHEET: TO	
GENERAL TOLERANCES		
RANGE OF NOMINAL DIMENSIONS (± mm)		
CLASS 1)	< 50 50 - 180 180 - 400 > 400	
FINE	0.5 1.0 1.5 2.0	
MEDIUM	1.0 2.0 3.0 4.0	
COARSE	2.0 3.5 5.0 6.5	
TAPPED HOLES ACC: ISO 4038 / JED-152	078102 1xA 00-12-21	
1) TOLERANCE CLASS APPLIED CROSS-MARKED		
DOH-NO.	REV.	DATE
CARTON-DRAWING DATE: 00-07-12 DRAWN: Mueller CHECKED: Riischer STANDARDIZATION:		
MASS SCALE		PRODUCT IDENTIFICATION NO.
110250 12xC 06-07-10 079313 2xB 01-04-27		3,2 kg 1:1 SIZE T.R.:
A 1 525		423 503 019 0
SHAPE CODE		REPLACEMENT FOR
8115		653 1/1

TOLE COMMUNICATION OU REPRODUCTION DE CE DOCUMENT, TOUTE ESPERATION COMMUNICATION DE SON CONTENU...
 TODA COMMUNICAZIONE O RIPRODUZIONE MESSO DOCUMENTO, NE UTILIZZARE IL CONTENUTO O RENDI-
 TOBU COMMUNICAZIONE O REPRODUKCE MIESO DOCUMENTU, NE UZITIZOVAT OBYVETI PRISTUPNIM...
 TOBY COMMUNICAZIONE O REPRODUKCE MIESO DOCUMENTU, NE UZITIZOVAT OBYVETI PRISTUPNIM...
 TOBY COMMUNICAZIONE O REPRODUKCE MIESO DOCUMENTU, NE UZITIZOVAT OBYVETI PRISTUPNIM...
 TOBY COMMUNICAZIONE O REPRODUKCE MIESO DOCUMENTU, NE UZITIZOVAT OBYVETI PRISTUPNIM...
 TOBY COMMUNICAZIONE O REPRODUKCE MIESO DOCUMENTU, NE UZITIZOVAT OBYVETI PRISTUPNIM...

A B C D E F G H I
 1 2 3 4 5 6 7 8 9 10 11 12
 1009/016/12/04_03
 05/6/03
 PRODUCT TYPE