

SURFACE PROTECT./OBERFL. SCHUTZ	
I	JED-240 (RAL 3009)
II	JED-256
III	JED-371
IV	AL
V	GUMMI ODER KUNSTSTOFF
VI	MS

ATTENTION: SPRING LOAD
VORSICHT: FEDERVORSpannung
ATTENTION: RESSORT COMPRISE
ATTENZIONE: MOLLA COMPRESSA

1 RELEASED
GELOEST
DESSERRE
RILASCIATO

2 NOT RELEASED (10 ± 25 Nm)
NICHT GELOEST
NON DESSERRE
NON RILASCIATO

MEDIUM : AIR
MEDIUM : DRUCKLUFT
FLUIDE : AIR
FLUIDO : ARIA

* OUT OF PLANE
VERSETZT GEZEICHNET
AU DEHORS DU PLAN DE PROJECTION
AL DI FUORI DEL PIANO DI PROIEZIONE

CONTROL PRESSURE :
DICHTPRUEFD RUCK : MAX.pe=10bar
PRESSION D'ESSAI :
PRESSIONE DI PROVA :

PORT : SERVICE BRAKING SYSTEM
ANSCHLUSS : BETRIEBSBREMSANLAGE
ORIFICE : 11 DISPOSITIF DE FREINAGE DE SERVICE
ORIFIZIO : DISPOSITIVO DI FRENATURA DI SERVIZIO

PORT : SPRING BRAKE CYLINDER
ANSCHLUSS : FEDERSPEICHERZYLINDER
ORIFICE : 12 CYLINDRE A RESSORT
ORIFIZIO : CILINDRO A MOLLA

THERMAL RANGE OF APPLICATION :
THERMISCHER ANWENDUNGSBEREICH : -40° ~ +80°C
GAMME D'APPLICATION THERMIQUE :
CAMPO DI APPLICAZIONE TERMICA :

TO BE INSTALLED WITH LOWER BREATHER HOLE OPEN
IM EINBAUZUSTAND UNTERE ATMUNGSBOHRUNG GEOEFFNET : ± 90°
A MONTER AVEC LE RENIFLARD INFERIEUR OUVERT
INSTALLAZIONE : CON IL FORO DI SFIATO INFERIORE APERTO

INSTALLATIONS POSITION AS DRAWN
EINBAULAGE WIE GEZEICHNET
POSITION D'INSTALLATION SUIVANT DESSIN
POSIZIONE DI MONTAGGIO COME DI SEGNA TO

AIR VOLUME OF SPRING BRAKE PART :
HUBVOLUMEN DES FEDERSPEICHERS : CA. 0,95 LITER
VOLUME D'AIR DU DISPOSITIF RESSORT :
VOLUME D'ARIA DELLA SEZIONE :

AIR VOLUME OF SERVICE PART AT 2/3 OF ITS STROKE :
HUBVOLUMEN DES BETRIEBSBREMSSTEILES BEI 2/3 HUB : 0,37 LITER
VOLUME D'AIR DU DISPOSITIF DU FRAIN DE SERVICE A 2/3 DE LA COURSE :
VOLUME D'ARIA DELLA SEZIONE DI FRENO DI SERVIZIO A 2/3 DELLA CORSA :

THE VARIATION 425 327 200 0 CORRESPONDS EXACTLY TO 425 327 064 0 UND BOTH WABCO
REF - NUMBERS ARE INDICATED ON THE NAMEPLATE.

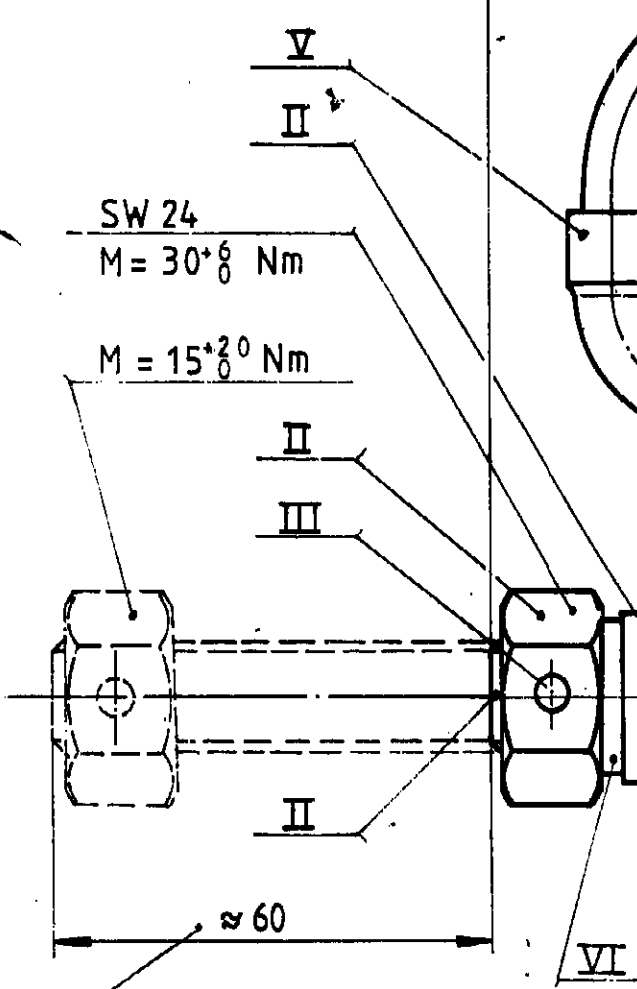
ABWANDLUNG 425 327 200 0 ENTSPRICHT GENAU 425 327 064 0 UND BEIDE NUMMERN
SIND AUF DEM TYPEN SCHILD ANGEZEIGEN.

LA VARIANTE 425 327 200 0 CORRESPOND EXACTEMENT A 425 327 064 0 ET LES DEUX
NUMEROS D'IDENTIFICATION SONT INDIGUES SUR LA PLAQUE DE FIRME.

LA VARIANTE 425 327 200 0 CORRISPONDE ESTTAMENTE AL 425 327 064 ED ENTRAMBI
I CODICI WABCO SONO RIPORTATI SULLA TARGHETTA.

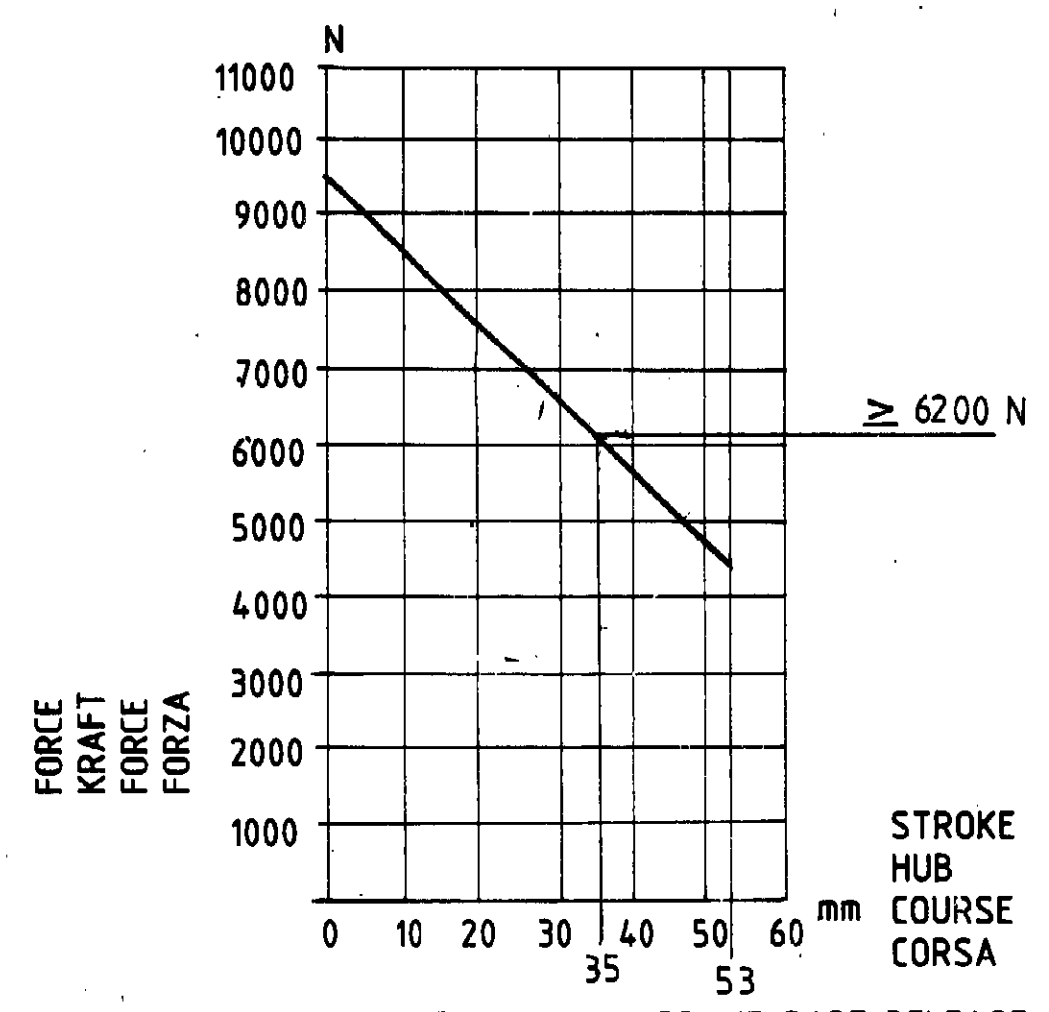
425 327 063 0	A	C	144	
425 327 200 0	B	C	187	425 327 064 0
425 327 068 0	A	C	157	
425 327 067 0	A	D	157	
425 327 064 0	B	C	187	425 327 064 0
425 327 062 0	B	C	250	

TRISTOP BRAKE ACTUATOR TRISTOPZYLINDER CYLINDRE TRISTOP CILINDRO TRISTOP	FRONT COVER ZYLINDERDECKEL COUVERCLE AVANT COPERCHIO ANTERIORE	DISASSAEMBLING CLAMP SPANNBAND COLLIER DE FIXATION FASCETTA DI FISSAGIO	L	ORDER NO. BESTELL NR. NO. DE COMMANDE NO. DELL ORDINE
---	---	--	---	--

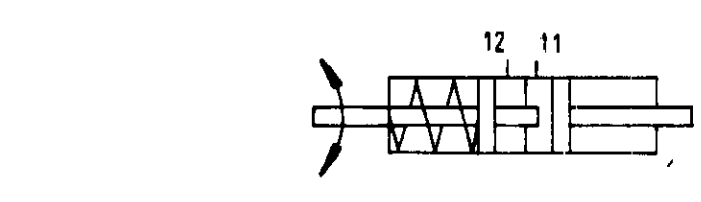


RELEASE POSITION
LOESESTELLUNG
POSITION DE DESSERRAGE
POSIZIONE DI RILASCIO

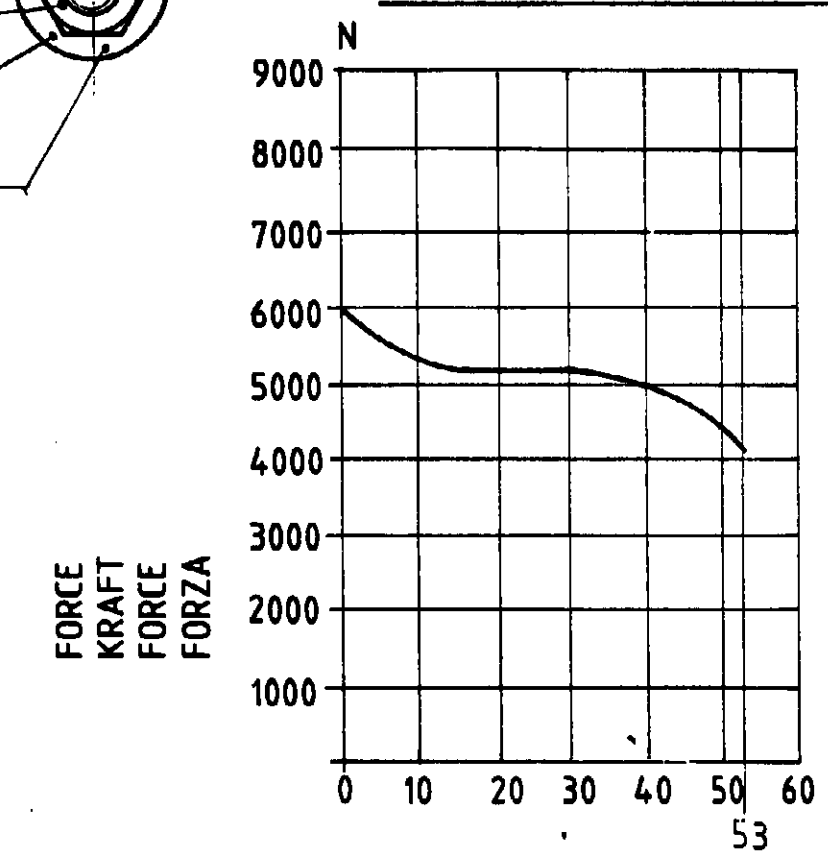
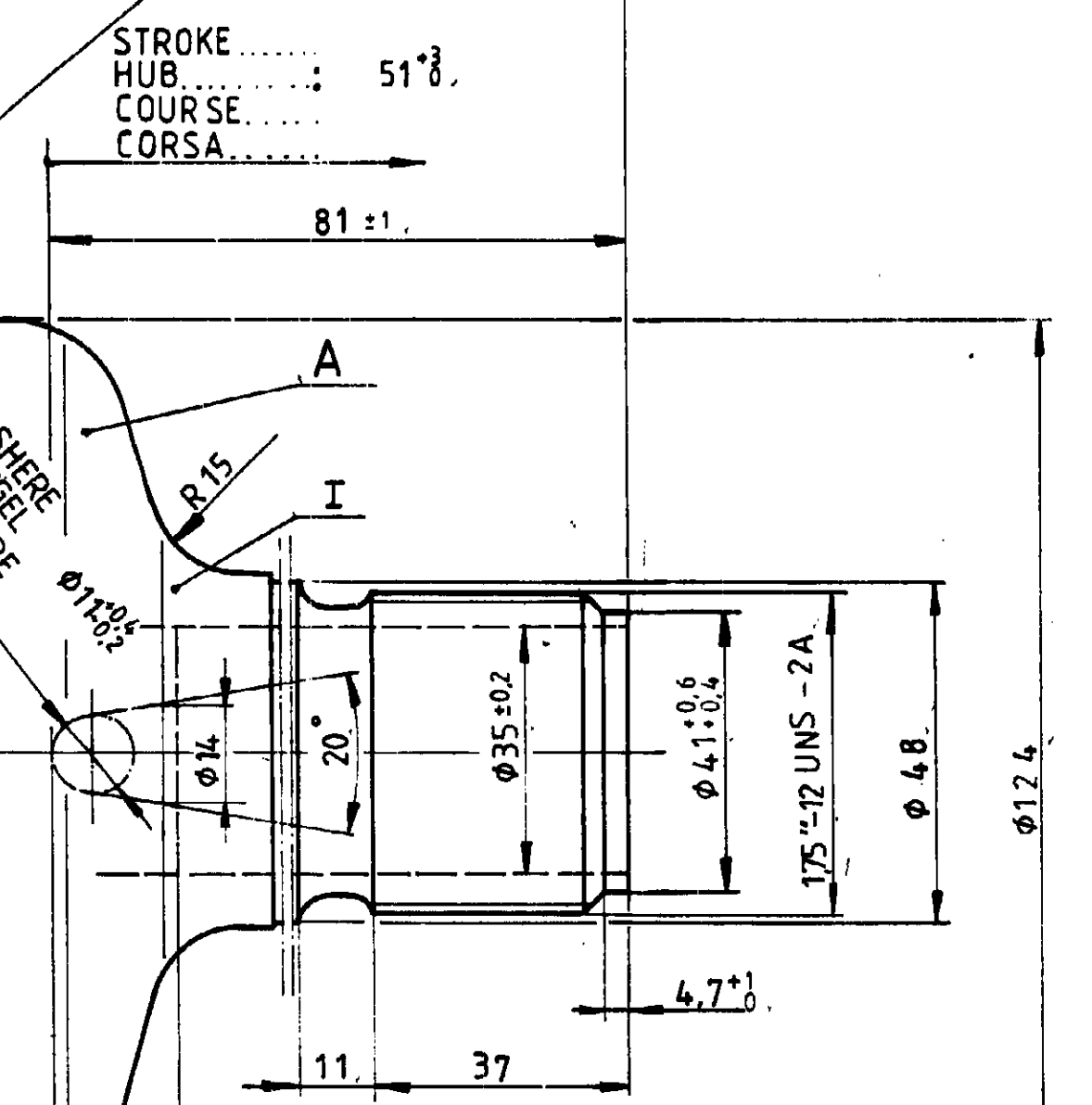
STATE AS SUPPLIED : RELESED
ANLIEFERUNGSZUSTAND : GELOEST
ETAT DE LIVRASION : DESSERRE
STATO DI CONSEGNA : RILASCIATO



OUTPUT FORCE OF SPRING BRAKE PART, RELEASE PRESSURE : 5,2 ± 0,3 bar
KRAFTABGABE DES FEDERSPEICHERS, LOESEDRUCK :
EFFORT DE POUSSEE DU DISPOSITIF RESSORT, PRESSION DE DESSERAGE :
FORZA DI SPINTA DELLA SEZIONE A MOLLA, PRESSIONE DI RILASCITO :



POSITIONING OF BREATHER TUBE IN UPPER RANGE MANDATORY
ATMUNGSROHR MUSSBEIM EINBAU IM OBEREN BEREICH ANGEORDNET WERDEN
AU MONTAGE IL EST IMPOSE A L'EPOSER LE TUBE RENIFLANT DANS LA ZONE SUPERIEURE
PER IL MONTAGGIO SI DE VE DISPORRE IL TUBO RESPIRATORE NELLA ZONA SUPERIORA



OUTPUT FORCE OF SERVICE BRAKE PART AT : 6,8 bar
KRAFTABGABE DES BETRIEBSBREMSSTEILES BEI :
EFFORT DE POUSSEE DU DISPOSITIF DU FREIN DE SERVICE SOUS :
FORZA DI SPINTA DELLA SEZIONE DI FRENO DI SERVIZIO PER :

GENERAL SPECIFICATION: JED-334		CADAM-DRAWING COPYRIGHT	
FURTHER TECHNICAL DATA:		DATE: 85-07-04	
DOC. CODE: SHEET: TO		DRAWN: [Signature]	
GENERAL TOLERANCES		CHECKED: [Signature]	
RANGE OF NOMINAL DIMENSIONS (± mm)		STANDARDIZATION: 85-07-15	
CLASS	1)	MASS	SCALE
FINE	0,5	1,0	1,5
MEDIUM	1,0	2,0	3,0
COARSE	2,0	3,5	5,0
TAPPED HOLES ACC. ISO 4039 / JED-152		PRODUCT IDENTIFICATION NO.	
080444 1x E 01-06-28		425 327 069 0	
DCN-NO. REV. DATE		DOC. CODE SHEET	
A 1 185		653 1/1	
SHAPE CODE		REPLACEMENT FOR	
1) TOLERANCE CLASS APPLIED CROSSMARKED		SHAPE CODE	
100mm		REPLACEMENT FOR	
EXPERT CODE 738		PRODUCT TYPE 00X	