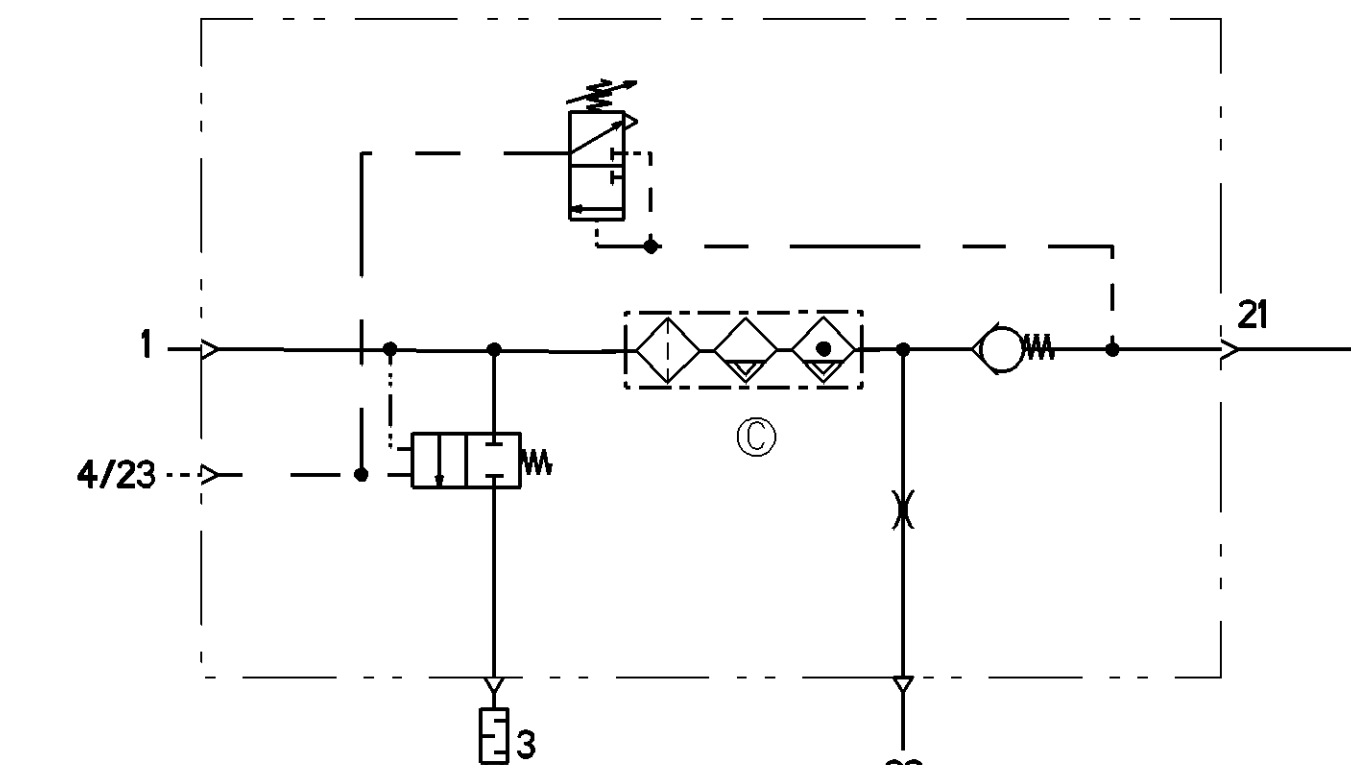
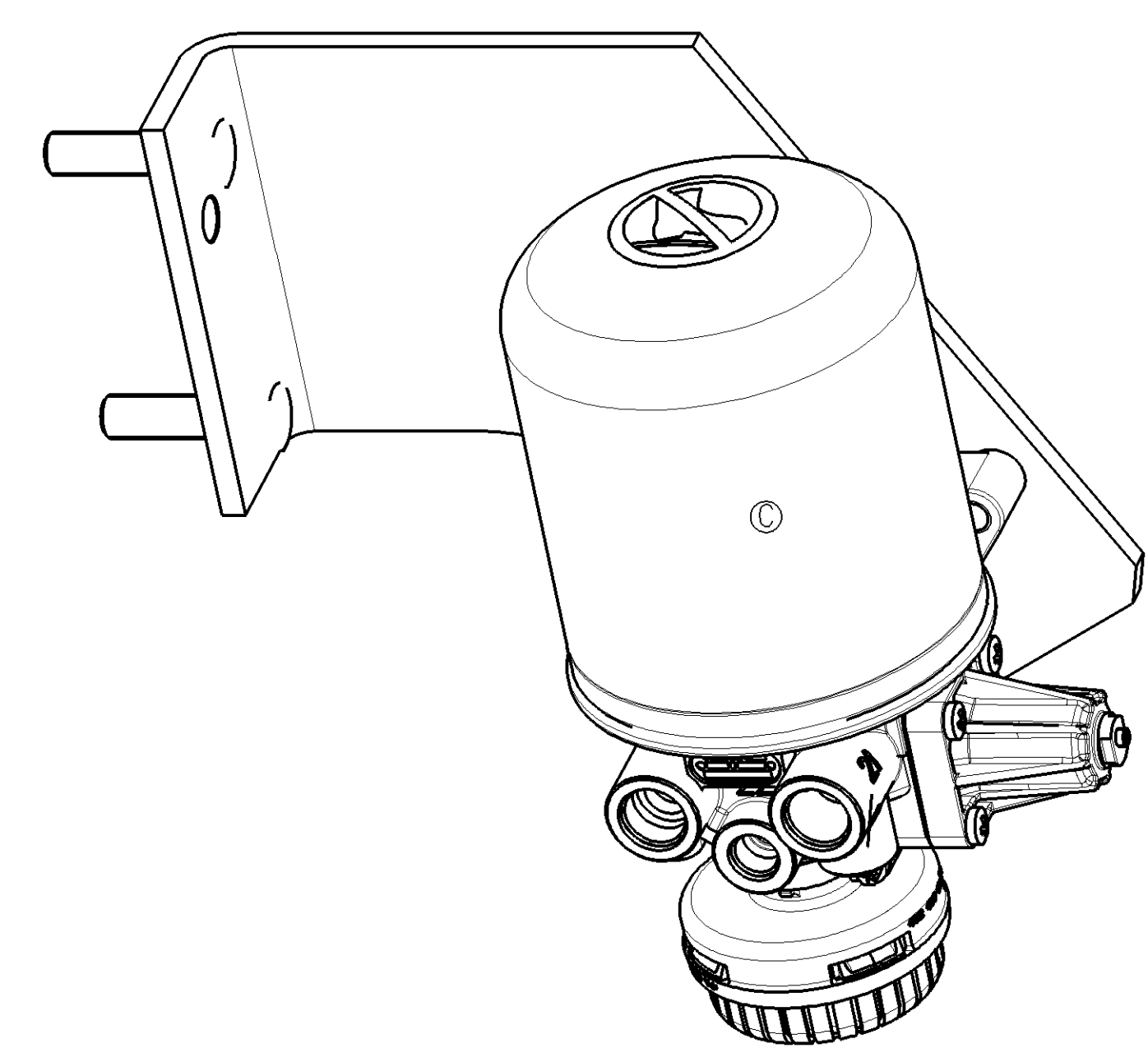
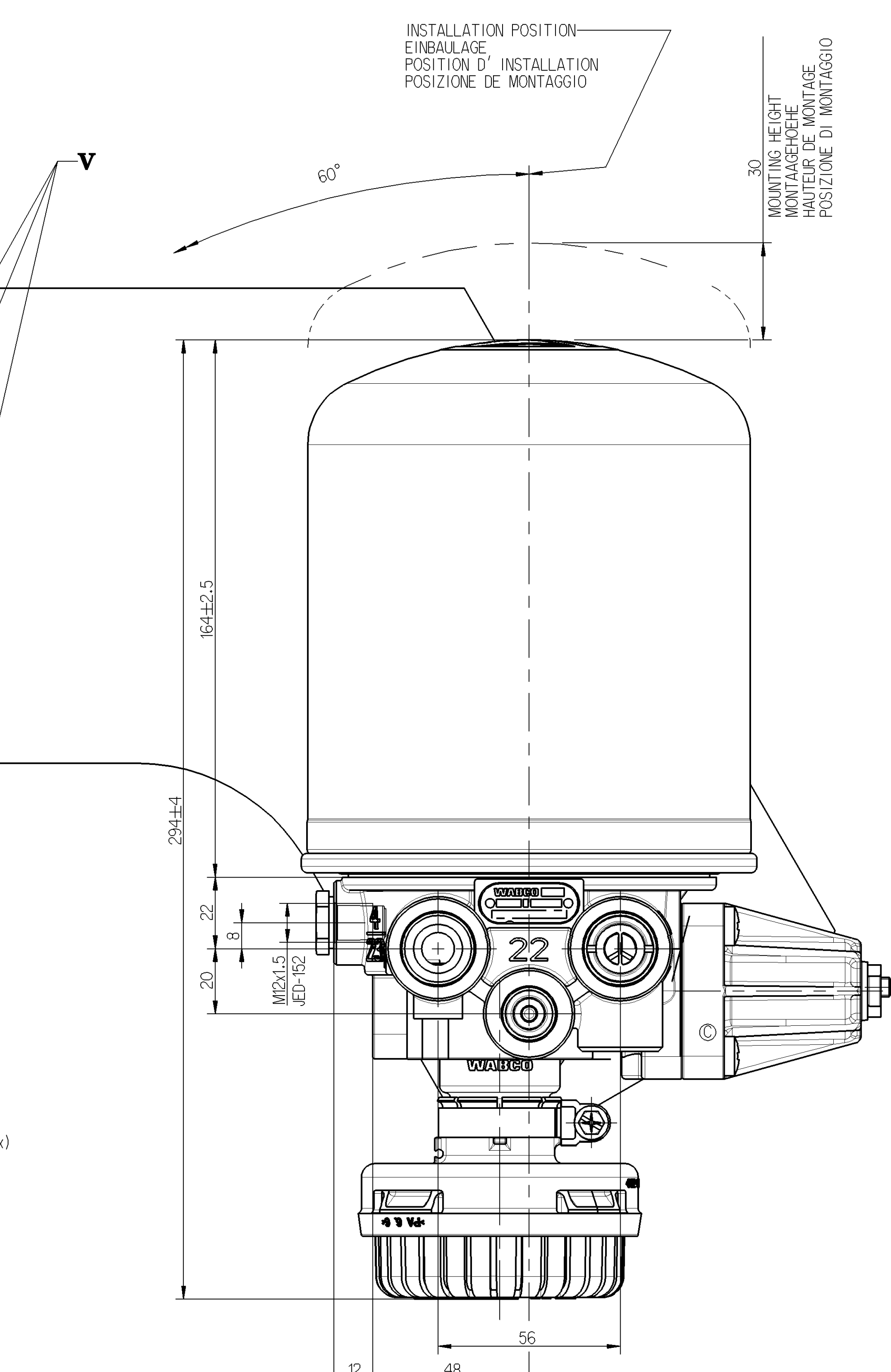
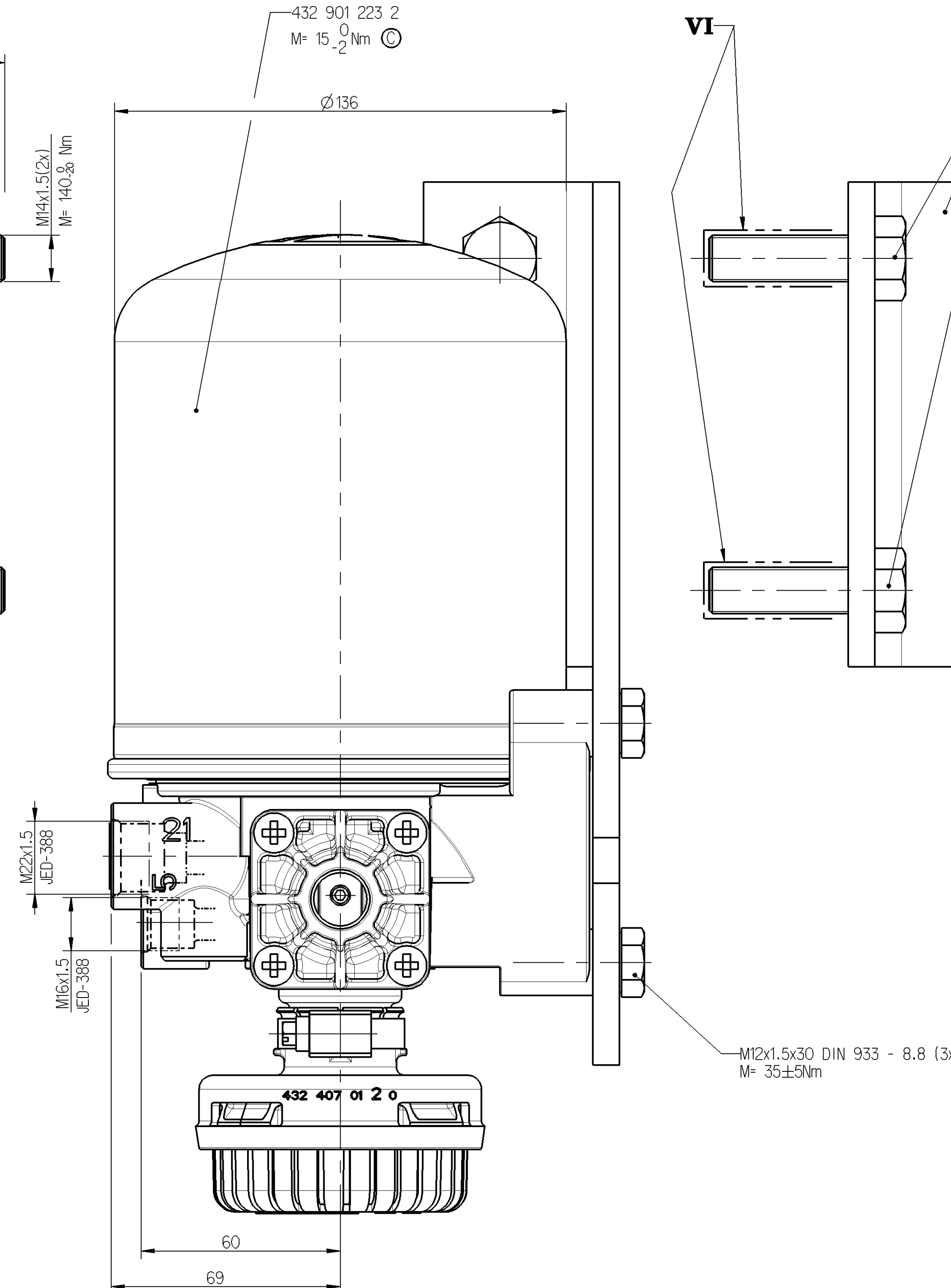
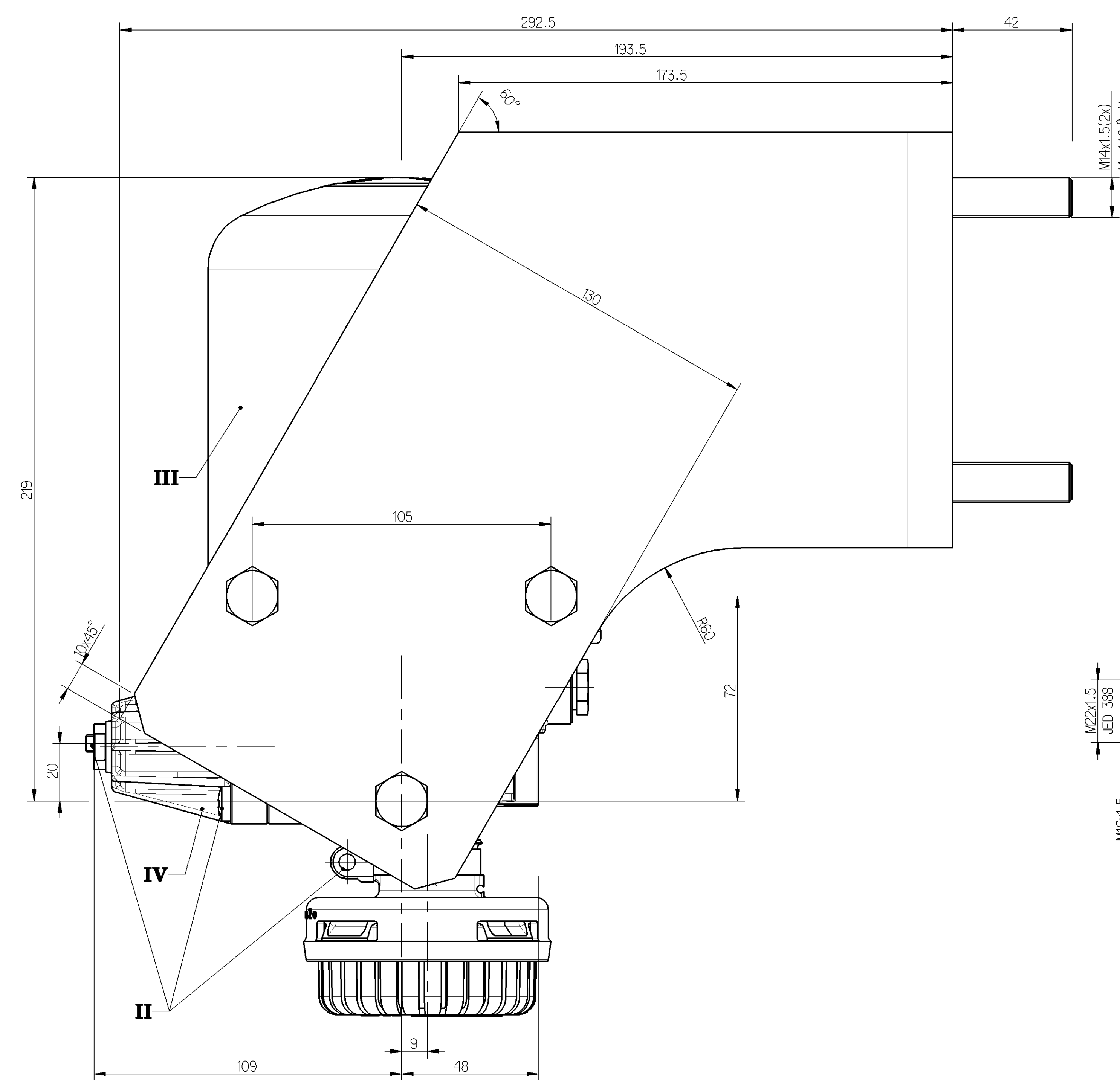
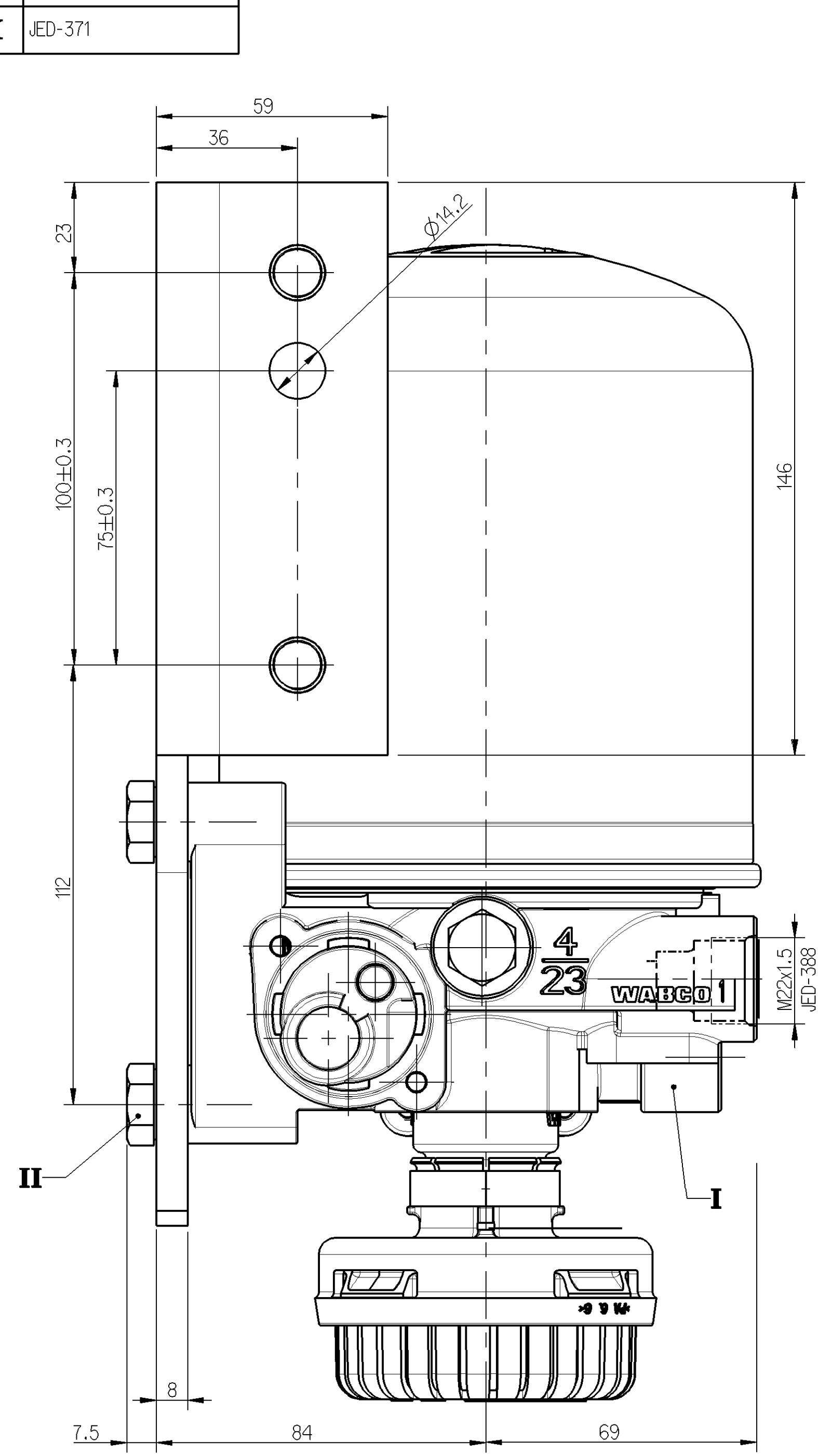


EXTERNAL SURFACE AUßERE OBERFLÄCHE SURFACE EXTERIEURE SUPERFICIE ESTERNA	
I	JED-259
II	JED-256-4
III	JED-471 WHITE ALUMINIUM
IV	JED-CLASS 25
V	JED-240-5
VI	JED-371



1	FROM THE COMPRESSOR VOM KOMPRESSOR PROVENANT DU COMPRESSEUR PROVENIENTE DEL COMPRESSORE			
21	TO THE RESERVOIRS ZU DEN LUFTBEHALTERN AUX RESERVOIR AL SERBATOII PER			
22	TO THE RESERVOIRS FOR REGENERATED AIR ZUM REGENERATIONS-LUFTBEHALTER AUX RESERVOIRS D'AIR REGENERE AL SERBATOII PER L'ARIA RIGENERATA			
4/23	TO THE COMPRESSOR ZUM KOMPRESSOR AU COMPRESSEUR AL COMPRESSORE			
3	EXHAUST FOR COMPRESSED AIR ENTLEEFUNG FUER DRUCKLUFT ECHAPPEMENT POUR AIR COMPRIME SCARICO PER ARIA COMPRESSA			
	<p>THERMAL RANGE OF CONTINUOUS APPLICATION THERMISCHER DAUERANWENDUNGSBEREICH PLAGE DE TEMPERATURE EN UTILISATION CONTINUE: -40°C...+65°C COMPO DI APPLICAZIONE CONTINUA</p> <p>RESISTANCE TO HEAT WAERMEBESTAENDIGKEIT RESISTANCE A LA CHALEUR RESISTANZA AL CALORE</p> <p>MEDIUM: COMPRESSED AIR MEDIUM: DRUCKLUFT FLUIDE: AIR COMPRIME FLUIDO: ARIA COMPRESSA</p> <p>WORKING PRESSURE BETRIEBSDRUCK PRESSION DE SERVICE PRESSIONE D'ESERCIZIO</p> <p>MAX. PERMISSIBLE FREQUENCY MAX. ZULAESSIGE FREQUENZ MAX. AMMISSIBILE FREQUENZA MAX. AMMISSIBILE FREQUENZA</p> <p>TORQUE FOR CONNECTIONS ANZUGSMOMENT FUER EINSCHRAUBSTUTZEN COUPLE DE SERRAGE DES RACCORDS COPPIA DI SERRAGGIO DEI RACCORDI</p>	<p>MAX. +80°C</p> <p>$p_{0\text{MAX.}} = 13\text{bar}$</p> <p>50 Hz</p> <p>M12x1.5 M max. 2Nm M16x1.5 M max. 34Nm M22x1.5 M max. 53Nm</p>	<p>COMBINED UNLOADER DRUCKREGLER REGULATEUR DE PRESSION GRUPPO DI REGOLAZIONE</p> <p>CUT OUT PRESSURE ABSCHALDRUCK PRESSION D'OUVERTURE PRESSIONE D'APERATURA</p> <p>OPERATING RANGE SCHALTSPANNE PLAGE DE REGULATION GAMME DI REGOLAZIONE</p> <p>MAX. PERMISSIBLE ACCELERATION MAX. ZULAESSIGE BESCHLEUNIGUNG ACCELERATION MAX. AMMISSIBILE ACCELERAZIONE MAX. AMMESSA</p> <p>INSTALLATION POSITION AS DRAW EINBALLAGE WIE GEZEICHNET POSITION D'INSTALLATION SUIVANT DESSIN POSIZIONE DI MONTAGGIO COME DISEGNATO</p>	<p>9.2±0.2bar</p> <p>0.7^{+0.6} bar</p>

COMBINED UNLOADER DRUCKREGLER REGULATEUR DE PRESS. GRUPPO DI REGOLAZIONE:	CUT OUT PRESSURE ABSCHALDRUCK PRESSION DE DECL. PRESSIONE D'APERT	DYNAMIC PRESSURE OF THE SAFETY VALVE STAUDRUCK DES SICHERHEITSVENTILES PRESSION DYNAMIQUE DU SOUPAPE DE SECURITE PRESSIONE DINAMICA DELLA VALVOLA DI SIOUREZZA
(bar)	(bar)	(bar)
7.1 ± 8.5 8.6 ± 10.0	≤ 14.5 (BEI Vn= 100cm³/min.) ≤ 16.0 (BEI Vn= 100dm³/min.)	

General Specification: JED-334-D - Size ISO 14405-1-E		Coppia WABCO	
Further Technical Data:		Date: 2013-07-30	
Doc. Code:	2013-07-30	Sheet:	1
General Tolerances ISO 2011	2013-07-31	Material:	Aluminum
Range of Nominal Dimensions (± mm)	± 0.10 - 0.20	Surface Treatment:	Aluminum
Class	1.0	Filter:	ALYTER
Flow	0.5 - 1.0	Pressure Drop:	7.5 bar
Medium	1.0 - 2.0	Temperature:	120°C
Coarse	2.0 - 3.5	Size:	Ø 136mm
Trapped Water acc.:	JED-388	Material No.:	432 410 017 0
Dr. Technical Class: Applied Compressor		Code of Reg. Inst.:	005 ML 1/1
		Scale:	1:1
		Material:	6 x C
		Pressure:	5050