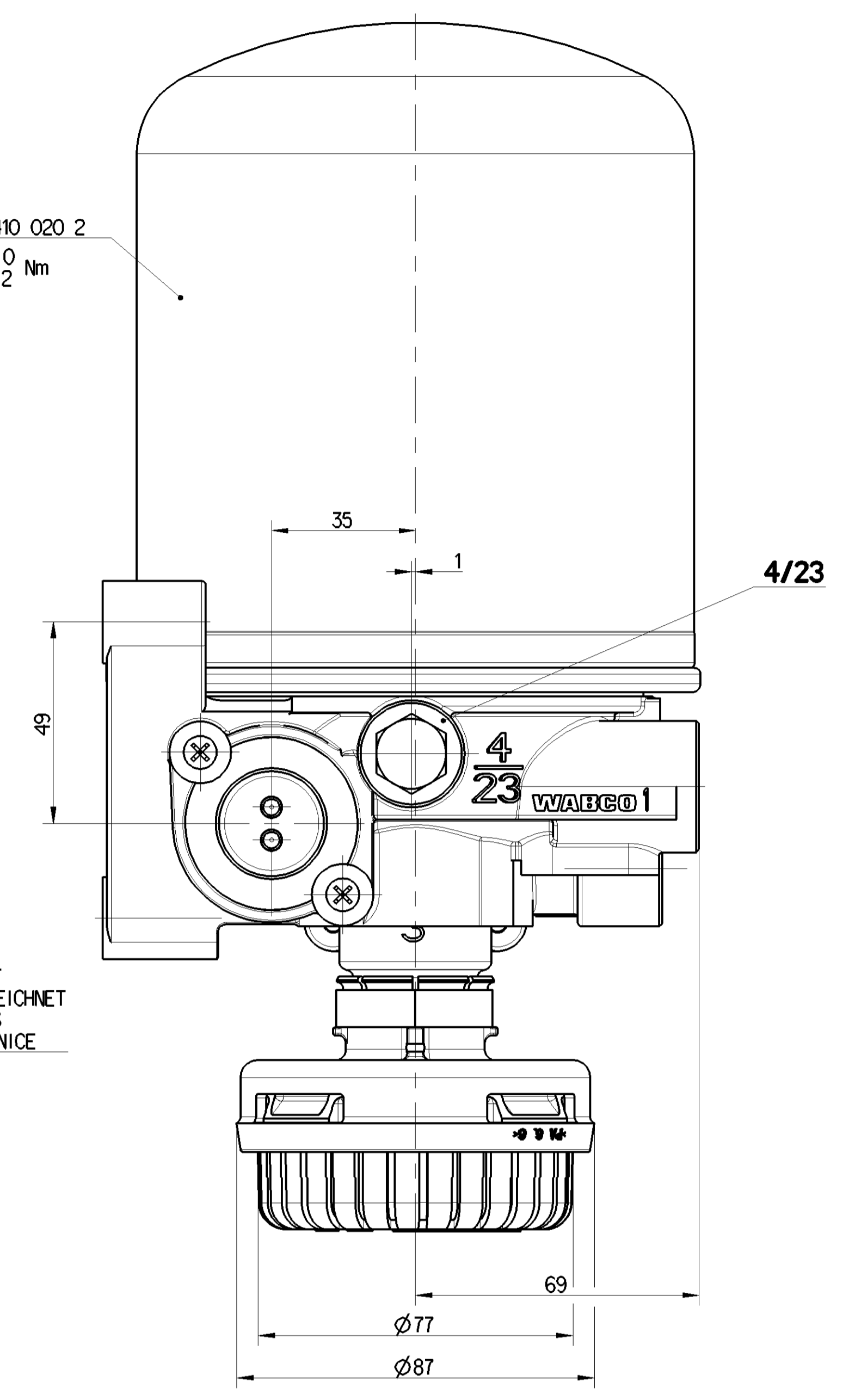
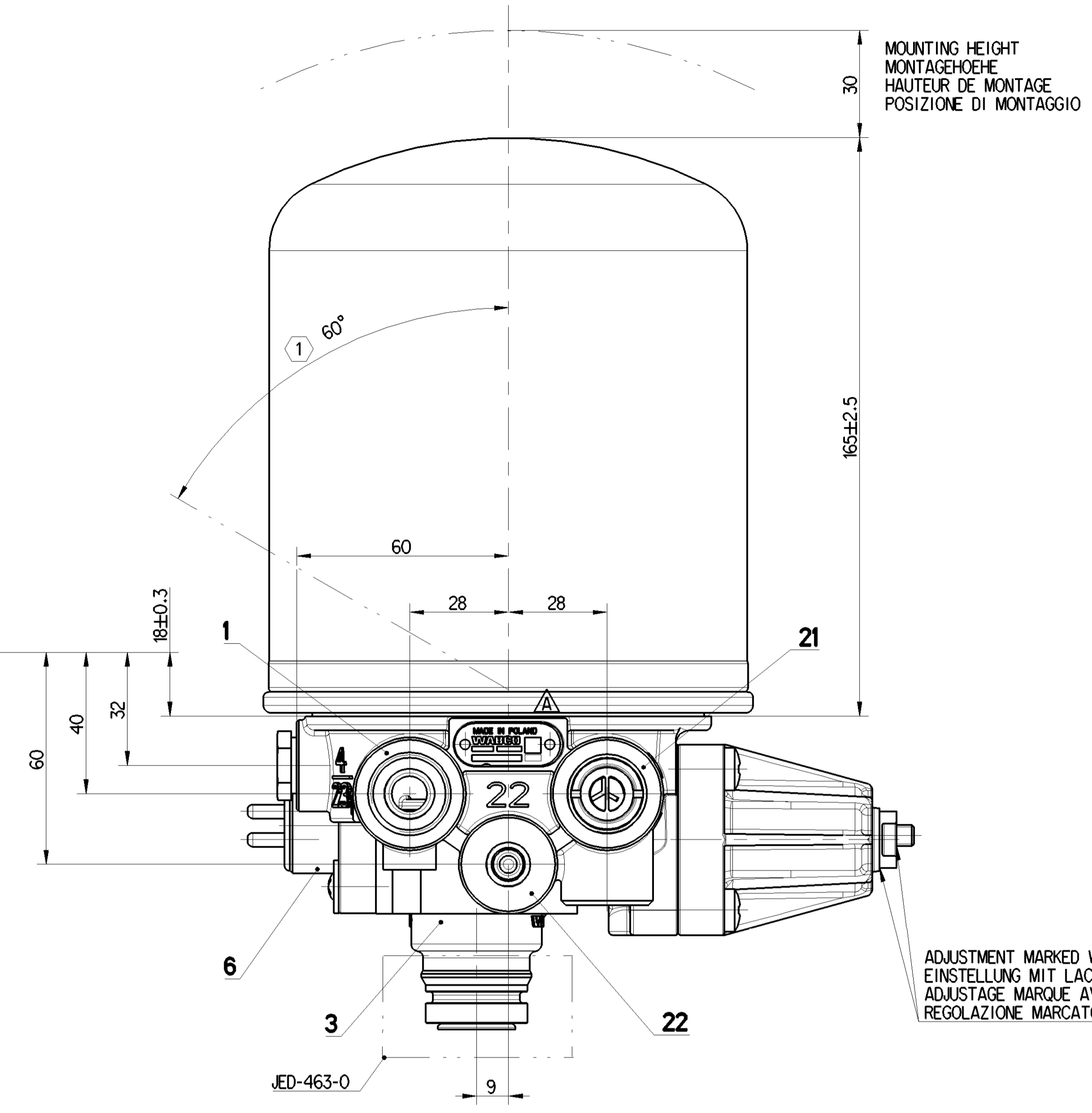
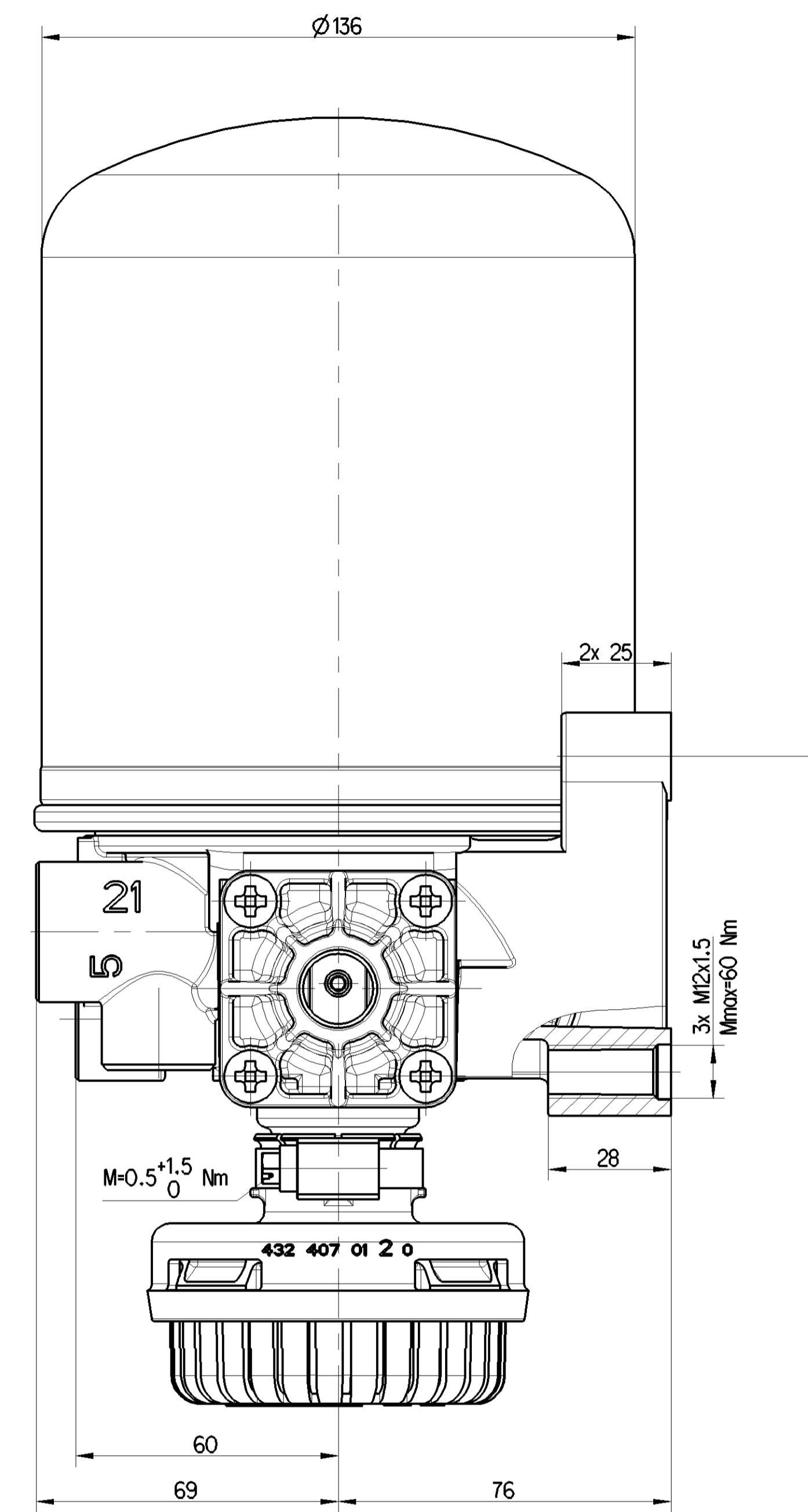
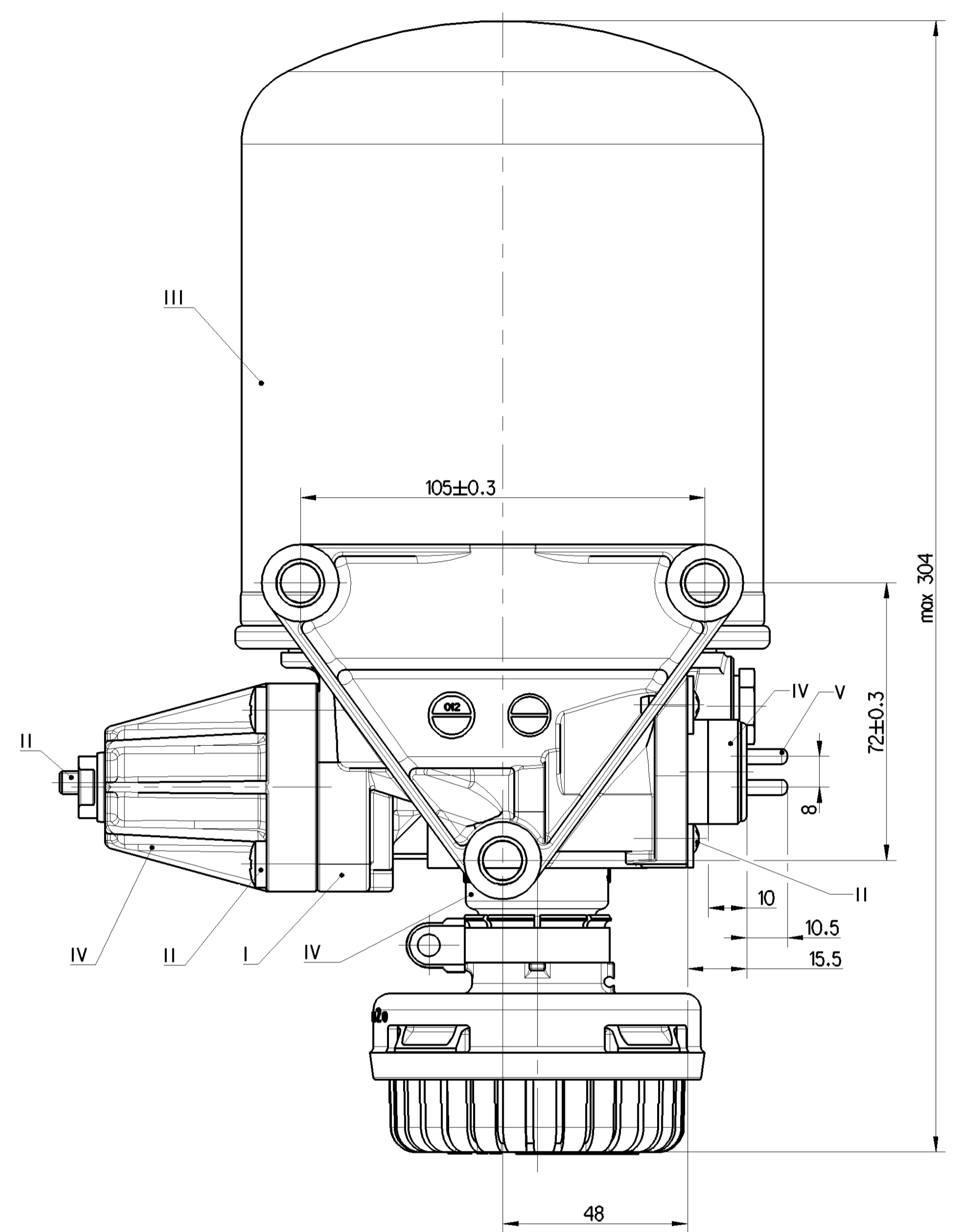
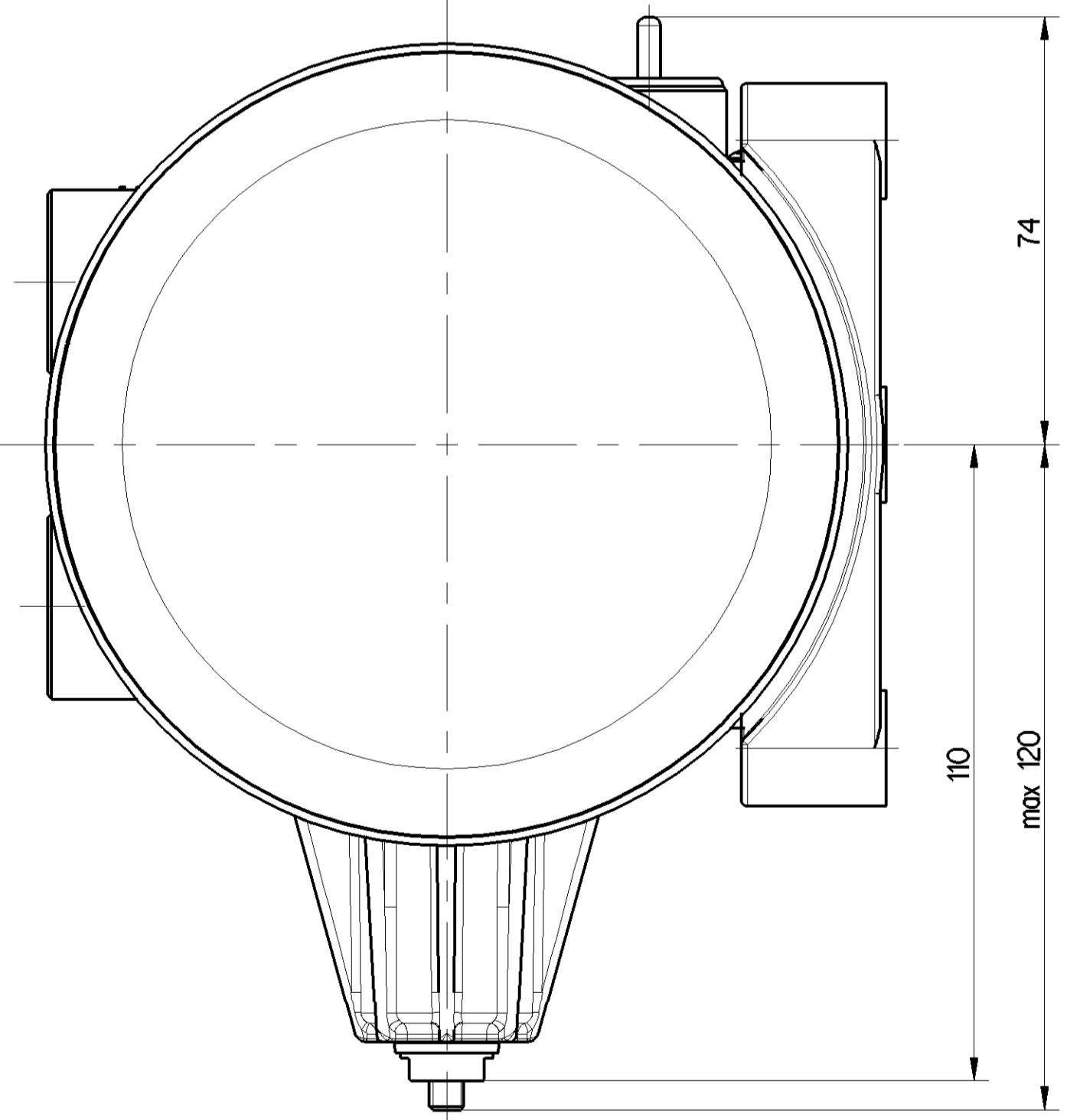


PART CODE	MATERIAL	SURFACE PROTECTION
I	ALUMINIUM ALLOY	CHROMATED
II	STEEL	PASSIVATED
III	STEEL	PAINTED
IV	PLASTIC	NO TREATMENT
V	BRASS	SILVER COATING



VIEW WITHOUT SILENCER



TECHNICAL DATA, TECHNISCHE DATEN, CARACTERISTIQUES TECHNIQUES, CARATTERISTICHE TECNICHE

THERMAL RANGE OF CONTINUOUS APPLICATION:
 THERMISCHER DAUERANWENDUNGSBEREICH: -40°C... +65°C
 PLAGE DE TEMPERATURE EN UTILISATION CONTINUE: -40°C... +65°C
 COMPO DI APPLICAZIONE CONTINUA: -40°C... +65°C

RESISTANCE TO HEAT:
 WAERMEBESTAENDIGKEIT: +80°C MAX.
 RESISTANCE A LA CHALEUR: +80°C MAX.
 RESISTANZA AL CALORE: +80°C MAX.

MEDIUM:
 MEDIUM: COMPRESSED AIR
 FLUIDE: AIR COMPRIE
 FLUIDO: ARIA COMPRESSA

WORKING PRESSURE:
 BETRIEBSDRUCK: Pe MAX. +13 bar
 PRESSION DE SERVICE: Pe MAX. +13 bar
 PRESSIONE D' ESERCIZIO: Pe MAX. +13 bar

MAX. PERMISSIBLE FREQUENCY:
 MAX. ZULAESSIGE FREQUENZ: 50 Hz
 MAX. ADMISSIBLE FREQUENZE: 50 Hz
 MAX. AMMISSIBILE FREQUENZA: 50 Hz

MAX. PERMISSIBLE ACCELERATION:
 MAX. ZULAESSIGE BESCHLEUNIGUNG: ±10 xg
 ACCELERATION MAX. ADMISSIBILE: ±10 xg
 ACCELERAZIONE MAX. AMMISSIBILE: ±10 xg

DYNAMIC PRESSURE OF SAFETY VALVE:
 STAUDRUCK DES SICHERHEITSVENTILES: 12⁺⁴₀ bar (BY Vn=100 dm³/min)
 PRESSION DYNAMIQUE DU SOUPEPE DE SECURITE: 12⁺⁴₀ bar (BY Vn=100 dm³/min)
 PRESSIONE DINAMICA DELLA VALVOLA DI SICUREZZA: 12⁺⁴₀ bar (BY Vn=100 dm³/min)

TORQUES FOR CONNECTIONS:
 ANZUNGSNOMENT FÜR EINSCHRAUBSTUTZEN: M12x1.5: Mmax = 21 Nm
 COUPLE DE SERRAGE DES RACCORDS: M22x1.5: Mmax = 53 Nm
 COPPIA DI SERRAGGIO DEI RACCORDI: M22x1.5: Mmax = 53 Nm

INSTALLATION POSITION AS DRAWN
 EINBALLAGE WIE GEZEICHNET
 POSITION D' INSTALLATION SUIVANT DESSIN
 POSIZIONE DI MONTAGGIO COME DISEGNATO

COMBINED UNLOADER
 DRUCKREGLER
 REGULATORE DE PRESSION
 GRUPPO DI REGOLAZIONE

OUT OUT PRESSURE:
 ABSCHALTDRUCK: 9.5±0.2 bar
 PRESSION D'OUVERTURE: 9.5±0.2 bar
 PRESSIONE D' APERTURA: 9.5±0.2 bar

OPERATING RANGE:
 SCHALTSPANNE: 0.7^{+0.6}₀ bar

PLAGE DE REGULATION:
 GAMME DI REGOLAZIONE: 0.7^{+0.6}₀ bar

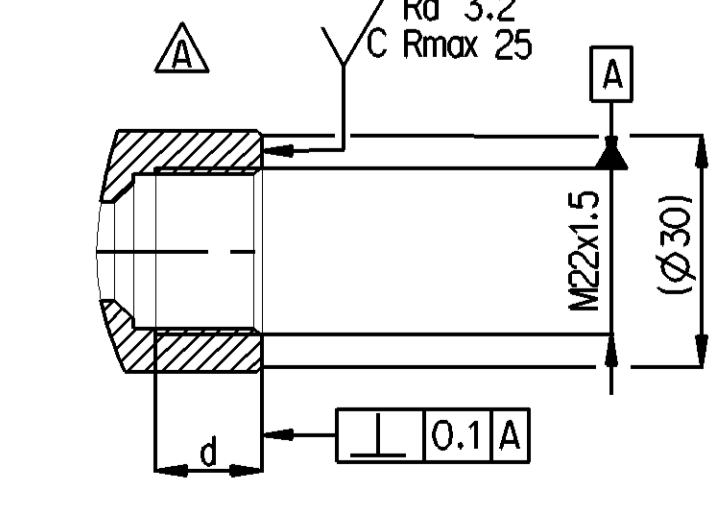
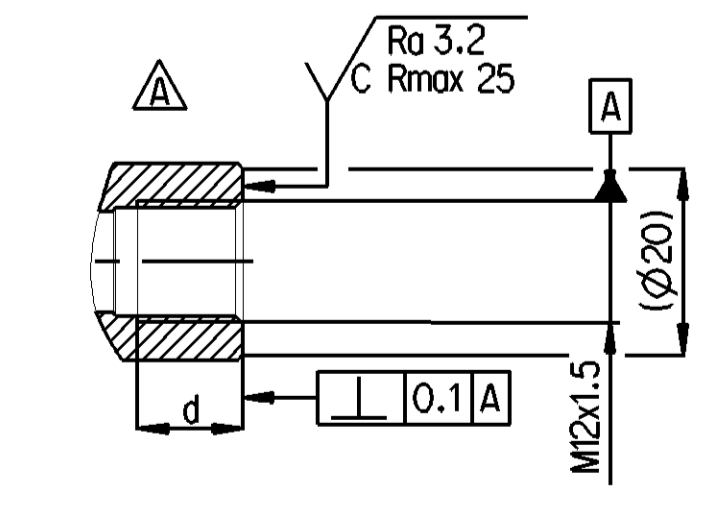
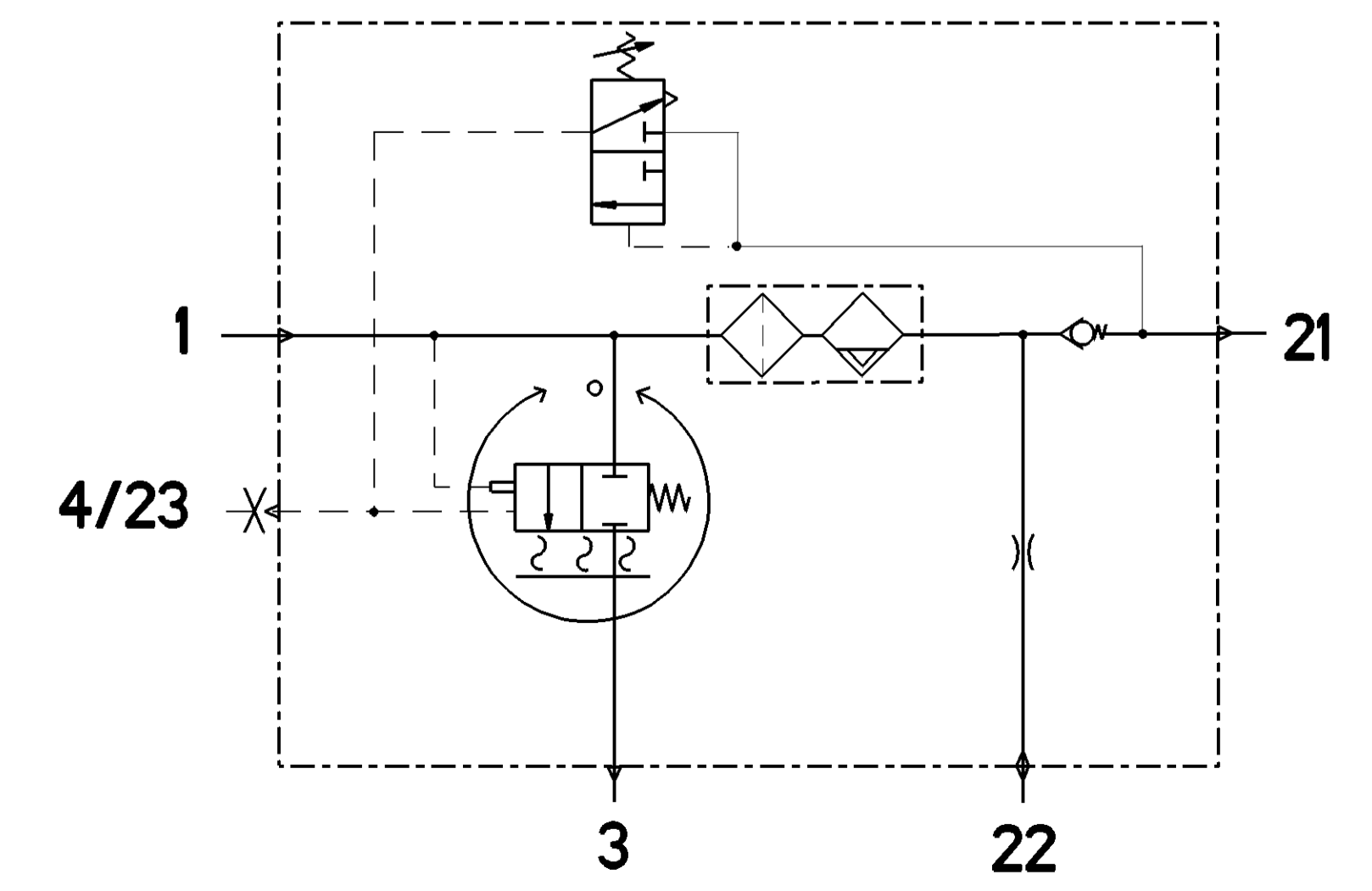
HEATING:
 HEIZUNG:
 CHAUFFAGE:
 RISCALDAMENTO:

NOMINAL POWER:
 NENNLEISTUNG:
 PUISSANCE NOMINALE:
 POTENZA NOMINALE: 100W

BATTERY VOLTAGE:
 BATTERIESPANNUNG:
 TENSION DE BATERIA:
 TENSIONE DI BATERIA: 24.0 V DC

CUT IN TEMPERATURE:
 EINSCHALT - TEMPERATUR:
 TEMPERATURE DE FERMETURE:
 TEMPERATURA DI CHIUSURA: 7 ±6 °C

CUT OUT TEMPERATURE:
 AUSSCHALT-TEMPERATUR:
 TEMPERATURE DE MISE:
 TEMPERATURA DI APERTURA: 29.5 ±3.0 °C



MOUNTING HEIGHT
 MONTAGEHOEHE
 HAUTEUR DE MONTAGE
 POSIZIONE DI MONTAGGIO

ADJUSTMENT MARKED WITH PAINT
 EINSTELLUNG MIT LACK GEKENZEICHNET
 ADJUSTAGE MARQUE AVEC VERNIS
 REGOLAZIONE MARCATO CON VERNICE

PORT ANSCHLUSS ORIFIZIO	FUNCTION FUNCTION FONCTION FUNZIONE	THREAD GEWINDE FILETTATURA
1	FROM THE COMPRESSOR VOM LUFTPRESSER PROVENANT DU COMPRESSEUR PROVENIENTE DEL COMPRESSORE	M22x1.5 d=15
21	TO THE RESERVOIRS ZU DEN LUFTBEHAELTERN AUX RESERVOIR AL SERBATOI PER	M22x1.5 d=16
22	TO THE RESERVOIRS FOR REGENERATED AIR ZUM REGENERATIONS-LUFTBEHALTER AUX RESERVOIRS D' AIR REGENERE AL SERBATOI PER L' ARIA RIGENERATA	M12x1.5 d=12
3	EXHAUST FOR COMPRESSED AIR ENTLUEFTUNG FUER DRUCKLUFT ECHAPPEMENT POUR AIR COMPRIE SCARIO PER ARIA COMPRESSA	SILENCER 432 407 012 0
4/23	CONTROL PORT / TO COMPRESSOR STEUERANSCHLUSS / ZUM KOMPRESSOR ORIFICE DE COMMANDE / AU COMPRESSEUR ORIFIZIO DI COMANDO / A COMPRESORE	- CLOSED - VERSCHLOSSEN - FERME - CHIUSO M12x1.5 d=12
6	HEATER HEIZUNG CHAUFFAGE RISCALDAMENTO	M27x1

General Specification: ISO 8015, ED-334-1, Size ISO 14405 LP
 Further Technical Data: Product Specification
 Doc. Code: 0262
 Sheet: 1 To 7
 Date: 2022-06-28
 Author: Kuryshki
 Checked: 2022-06-31
 Checked: Koszowski
 Class: 11
 Size: 4.35
 Scale: 1:1
 Material: 432 410 022 0
 Date of first issue: 2019-09-18
 Date of last issue: 2022-06-28
 Revision: 4 x A
 Drawing No.: 432 410 022 0
 Part No.: 005 ML 1/1
 WABCO AIR DRYER LUFTTROCKNER DESSICATEUR D' AIR ESSICCATORE D' ARIA