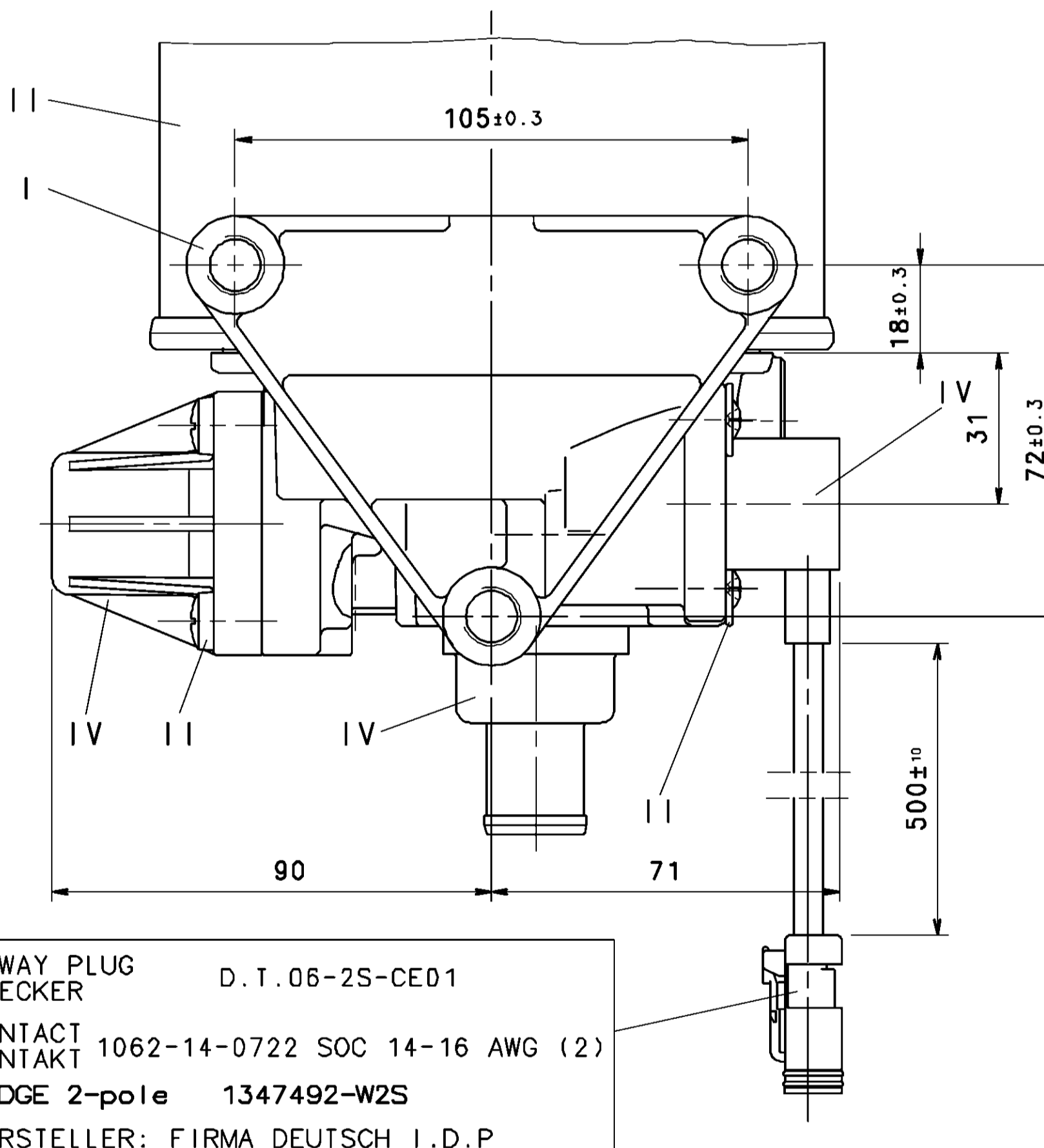
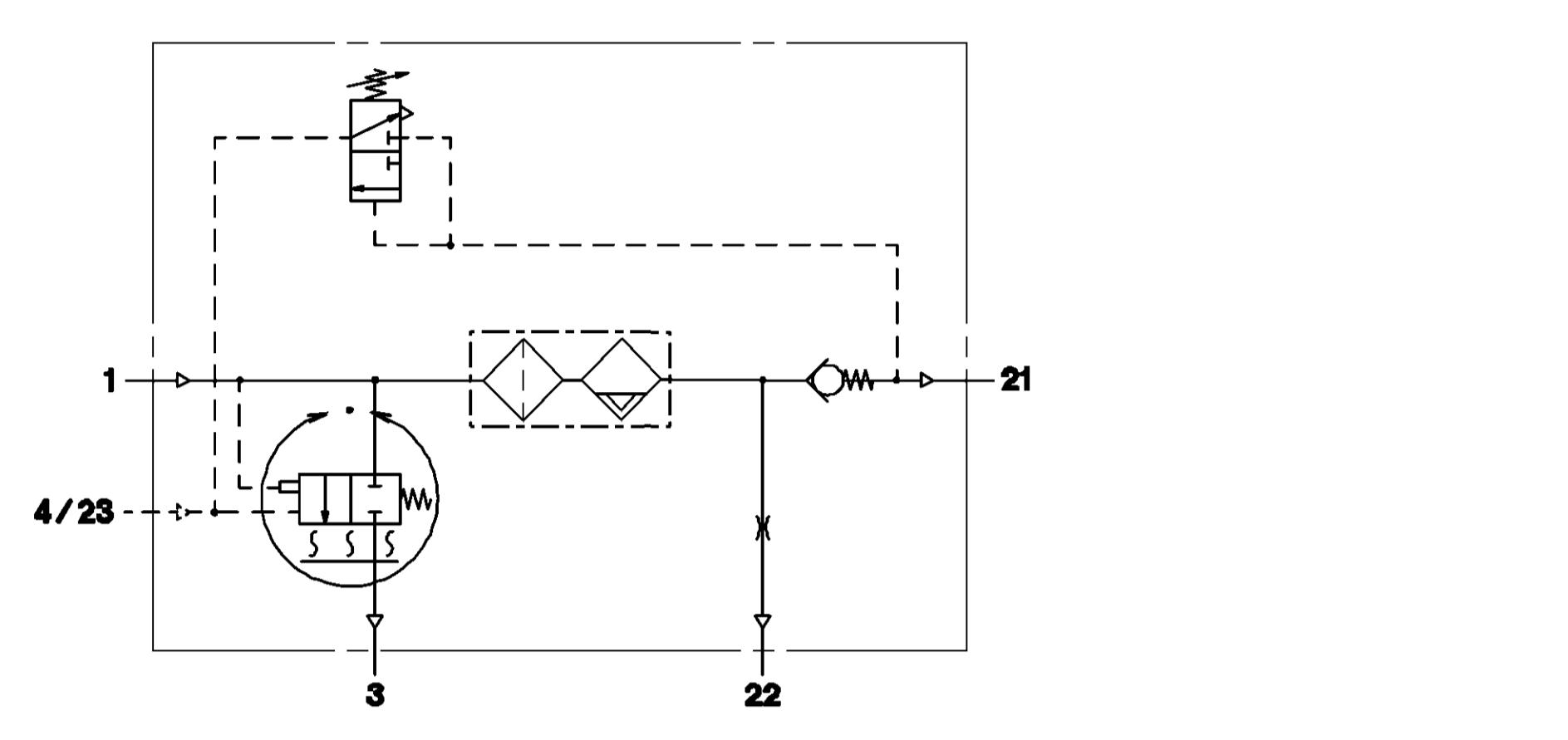


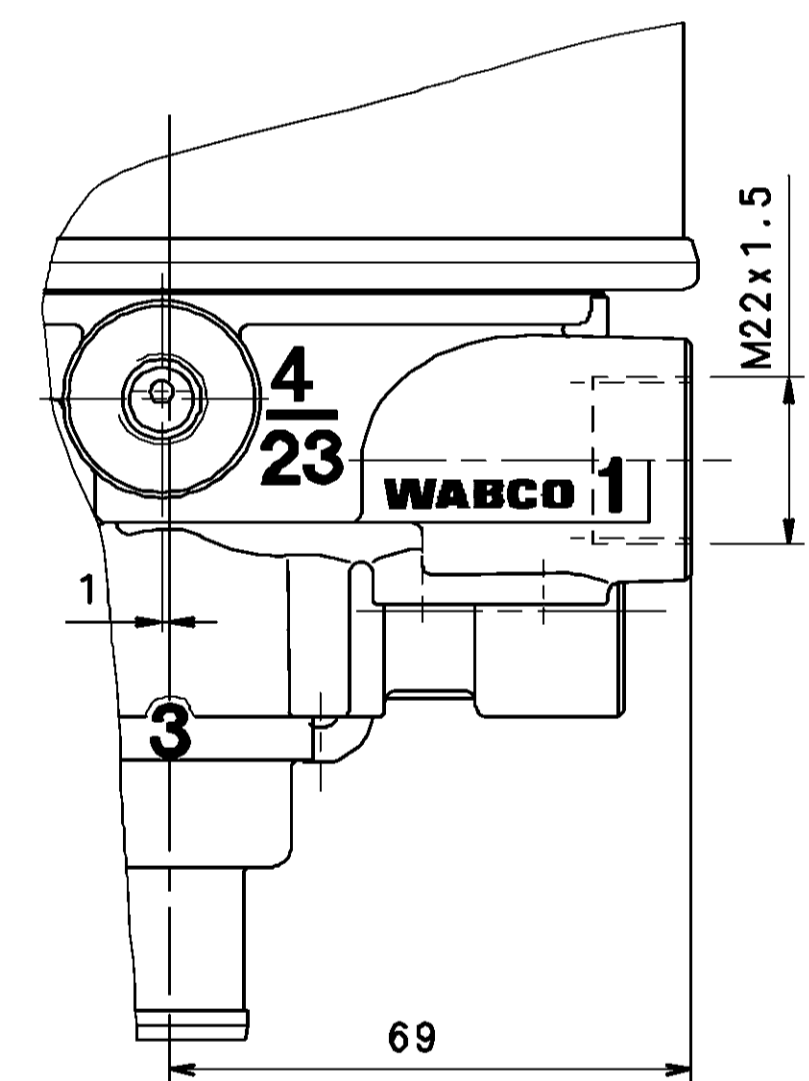
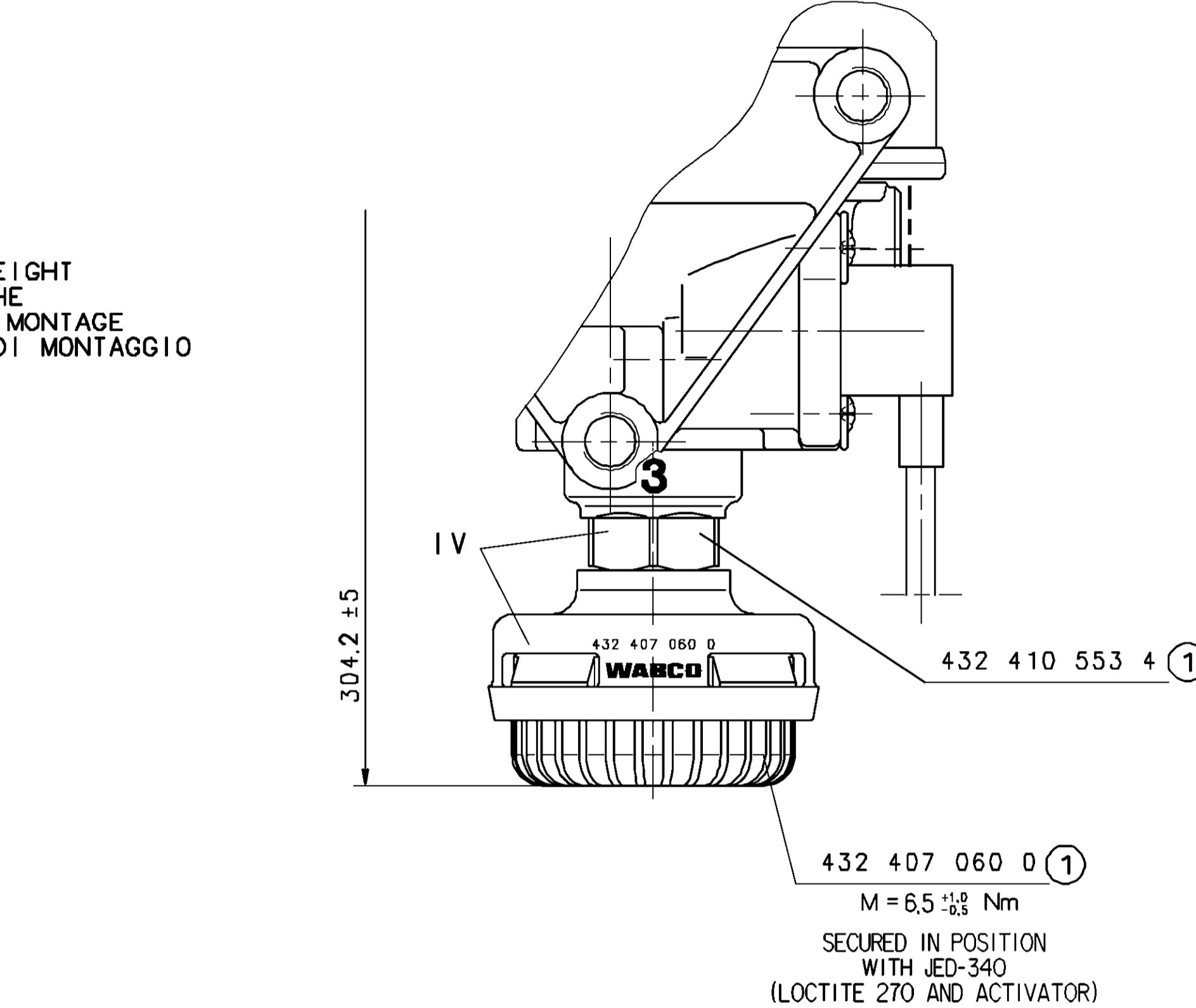
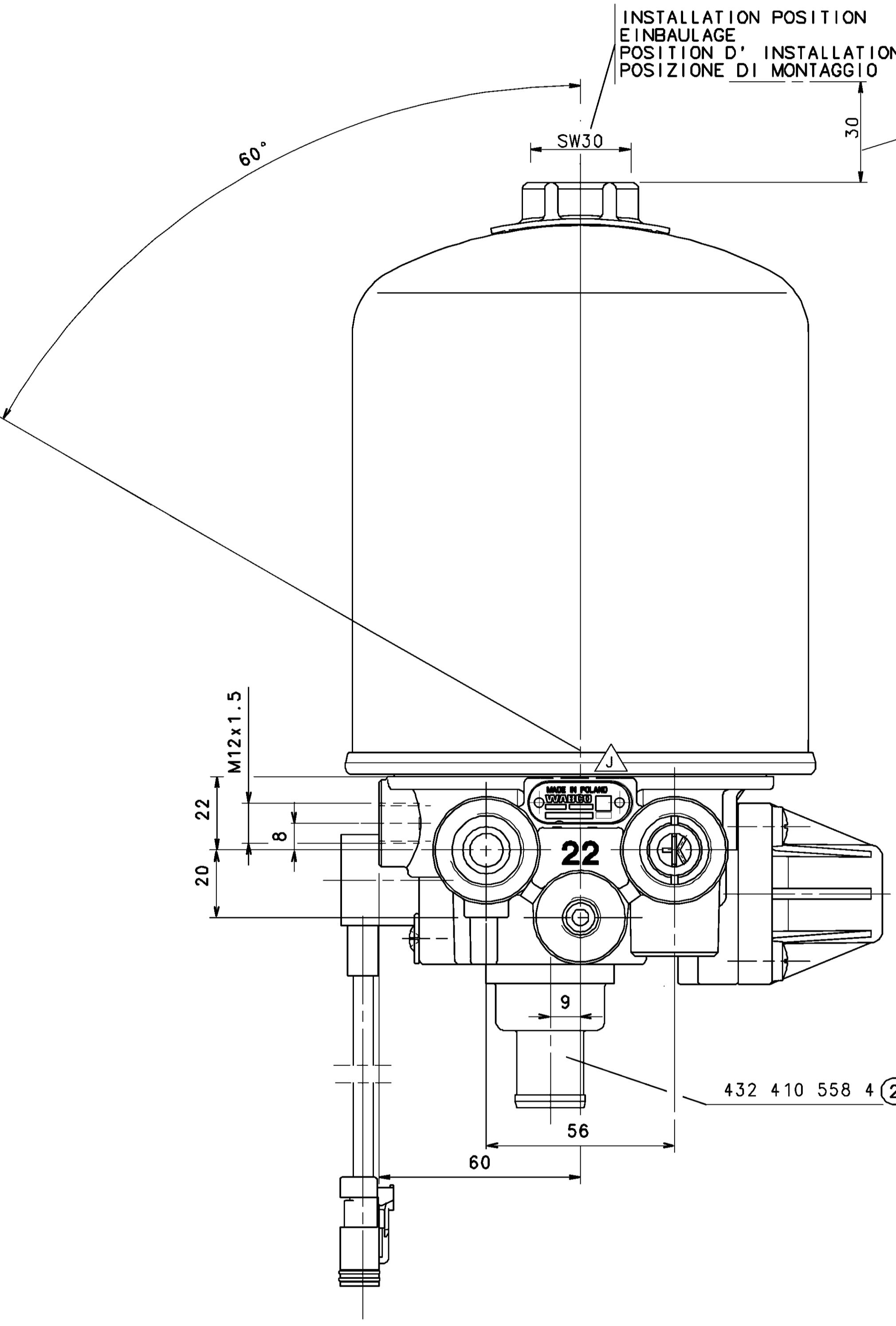
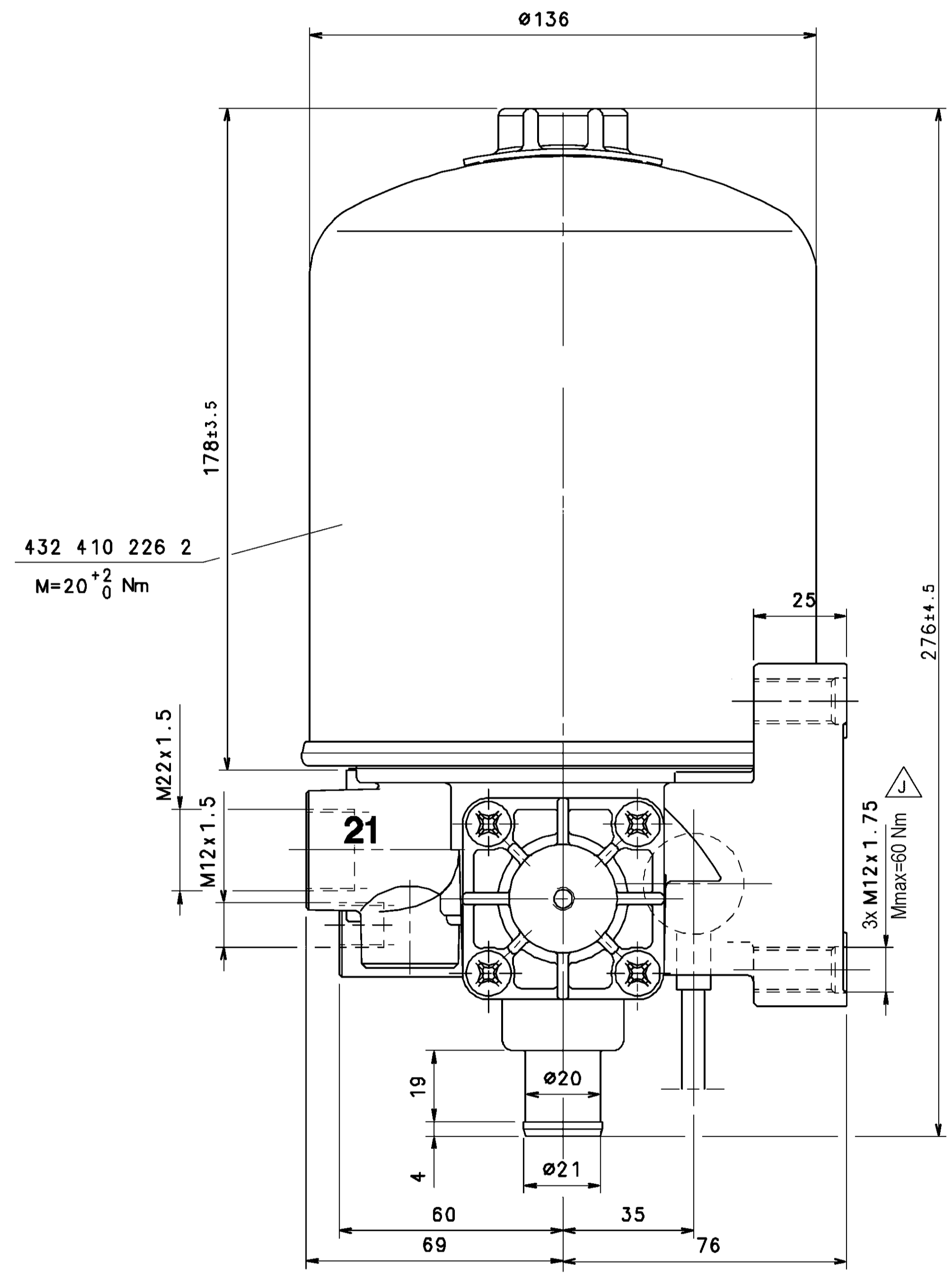
PART CODE	MATERIAL	SURFACE PROTECTION
I	ALUMINIUM ALLOY	CHROMATED
II	STEEL	PASSIVATED
III	STEEL	PAINTED
IV	PLASTIC	NO TREATMENT

FIRST ANGLE PROJECTION

IDENTIFICATION		DESICCANT CARTRIDGE TROCKENMITTELBEHALTER CARTOUCHE DU DESSICATEUR CARTUCCIA	COMBINED UNLOADER, DRUCKREGLER, REGULATEUR DE PRESS., GRUPPO DI REGOLAZIONE		MOUNTING HEIGHT MONTAGEHOEHE HAUTEUR DE MONTAGE POSIZIONE DI MONTAGGIO	OPERATING RANGE SCHALTSPANNE Δp (bar) PLAGE DE REGULATION GAMME DE REGUL.	MASS MASSE MASSE MASSA
WABCO	CUSTOMERS NO. KUNDEN-NR. NO CLIENT CLIENTE		CUT OUT PRESSURE ABSCHALTDRUCK P_0 (bar) PRESSION DE DECLENCH. PRESSIONE D' APERTURA	REGULATION RANGE			
432 410 083 0	*	432 410 226 2	9.3±0.2	0.9±0.3	≈4,32		
432 410 090 0	*	432 410 226 2	12.2±0.2	1.1 ^{+0.5} ₀	≈4,32		
432 410 144 0	*	432 901 228 2	9.3±0.2	0.9±0.3	≈4,39		



2 WAY PLUG
STECKER D.T. 06-2S-CE01
CONTACT
KONTAKT 1062-14-0722 SOC 14-16 AWG (2)
WEDGE 2-pole 1347492-W2S
HERSTELLER: FIRMA DEUTSCH I.D.P.



- 1 FROM THE COMPRESSOR
VOM LUFTPRESSER
PROVENANT DU COMPRESSEUR
PROVENIENTE DEL COMPRESSORE
- 21 TO THE RESERVOIRS
ZU DEN LUFTRBEHALTERN
AUX RESERVOIR
AL SERBATOIO PER
- 22 TO THE RESERVOIRS FOR REGENERATED AIR
ZUM REGENERATIONS-LUFTRBEHALTER
AUX RESERVOIRS D' AIR REGENERE
AL SERBATOIO PER L' ARIA RIGENERATA
- 4/23 TO THE COMPRESSOR
ZUM COMPRESSEUR
AU COMPRESSEUR
AL COMPRESSORE
- 3 EXHAUST FOR COMPRESSED AIR
ENTLUEFTUNG FUER DRUCKLUFT
ECHAPPEMENT POUR AIR COMPRI
SCARIO PER ARIA COMPRESSA

THERMAL RANGE OF CONTINUOUS APPLICATION:
THERMISCHER DAUERANWENDUNGSBEREICH: -40°C.....+65°C
PLAGE DE TEMPERATURE EN UTILISATION CONTINUE: -40°C.....+65°C
COMPO DI APPLICAZIONE CONTINUA:

RESISTANCE TO HEAT:
WAERMEBESTAENDIGKEIT: MAX.+80°C
RESISTANCE A LA CHALEUR:
RESISTANZA AL CALORE:

MEDIUM: COMPRESSED AIR
MEDIUM: DRUCKLUFT
FLUIDE: AIR COMPRI
FLUIDO: ARIA COMPRESSA

WORKING PRESSURE:
BETRIEBSDRUCK:
PRESSION DE SERVICE: $P_{e\max} = 13\text{bar}$
PRESSIONE D' ESERCIZIO:

TORQUE FOR CONNECTIONS:
ANZUGSMOMENT FUER EINSCHRAUBSTUTZEN: M12x1.5: $M_{\max} = 21\text{ Nm}$
COUPLE DE SERRAGE DES RACCORDS: M22x1.5: $M_{\max} = 53\text{ Nm}$
COPPIA DI SERRAGGIO DEI RACCORDI:

HEATING:
HEIZUNG:
CHAUFFAGE:
RISCALDAMENTO:

CUT-IN TEMPERATURE
EINSCHALT-TEMPERATUR 7*±6°C
TEMPERATURE DE FERMETURE
TEMPERATURA DI CHIUSURA

CUT-OFF TEMPERATURE
AUSSCHALT-TEMPERATUR 29.5*±3°C
TEMPERATURE DE MISE
TEMPERATURA DI APERTURA

BATTERY VOLTAGE:
BATTERIESPANNUNG: 24 ±4.8 V DC
TENSION DE BATTERIE: -2.4
TENSIONE DI BATTERIA:

POWER:
LEISTUNG: WITHOUT CURRENT
STROMLOS
PUISSANCE: 100 W
SANS COURANT
SENZA CORRENTE
POTENZA:

APPLIED ACROSS THE HEATER CONTACTS
DIREKT AN DEN HEIZUNGSKONTAKTEN
APPLIQUEE SUR LES CONTACTS DE CHAUFFAGE
APPLICATA SULLE CONTATTI DI RISCALDAMENTO

MAX. PERMISSIBLE FREQUENCY
MAX. ZULAESSIGE FREQUENZ 50 Hz
MAX. ADMISSIBLE FREQUENZE
MAX. AMMISSIBILE FREQUENZA

INSTALLATION POSITION AS DRAWN
EINBAULAGE WIE GEZEICHNET
POSITION D' INSTALLATION SUIVANT DESSIN
POSIZIONE DI MONTAGGIO COME DISEGNATO

MAX. PERMISSIBLE ACCELERATION:
MAX. ZULAESSIGE BESCHLEUNIGUNG: ±10xg
ACCELERATION MAX. ADMISSIBLE:
ACCELERAZIONE MAX. AMMESSA:

COMBINED UNLOADER: CUT OUT PRESSURE
DRUCKREGLER: ABSCHALTDRUCK
REGULATEUR DE PRESS.: PRESSION DE DECL.
GRUPPO DI REGOLAZIONE: PRESSIONE D' APERT.
(bar)

DYNAMIC PRESSURE OF THE SAFETY VALVE
STAUDRUCK DES SICHERHEITSVENTILES
PRESSION DYNAMIQUE DU SOUPEPE DE SECURITE
PRESSIONE DINAMICA DELLA VALVOLA DI SICUREZZA
(bar)

8.6 + 10.0
11.6 + 13.0

≤16.0 (BEI $V_n=100\text{dm}^3/\text{min.}$)
≤19.0 (BEI $V_n=100\text{dm}^3/\text{min.}$)

General Specification ISO 8015, JED-334-1, Size ISO 14405 LP		Copyright WABCO		WABCO	
Further Technical Data: Product Specification		Date: 2022-07-05		Sheet: 1 To 4	
Doc. Code: 026		2022-07-05		Kurzyński	
General Tolerances: ISO 2011		2022-07-05		Kozłowski	
Range of nominal dimensions in mm		Class		Tolerance	
11 ±0.10		11		±0.05	
12 ±0.10		12		±0.05	
13 ±0.10		13		±0.05	
14 ±0.10		14		±0.05	
15 ±0.10		15		±0.05	
16 ±0.10		16		±0.05	
17 ±0.10		17		±0.05	
18 ±0.10		18		±0.05	
19 ±0.10		19		±0.05	
20 ±0.10		20		±0.05	
21 ±0.10		21		±0.05	
22 ±0.10		22		±0.05	
23 ±0.10		23		±0.05	
24 ±0.10		24		±0.05	
25 ±0.10		25		±0.05	
26 ±0.10		26		±0.05	
27 ±0.10		27		±0.05	
28 ±0.10		28		±0.05	
29 ±0.10		29		±0.05	
30 ±0.10		30		±0.05	
31 ±0.10		31		±0.05	
32 ±0.10		32		±0.05	
33 ±0.10		33		±0.05	
34 ±0.10		34		±0.05	
35 ±0.10		35		±0.05	
36 ±0.10		36		±0.05	
37 ±0.10		37		±0.05	
38 ±0.10		38		±0.05	
39 ±0.10		39		±0.05	
40 ±0.10		40		±0.05	
41 ±0.10		41		±0.05	
42 ±0.10		42		±0.05	
43 ±0.10		43		±0.05	
44 ±0.10		44		±0.05	
45 ±0.10		45		±0.05	
46 ±0.10		46		±0.05	
47 ±0.10		47		±0.05	
48 ±0.10		48		±0.05	
49 ±0.10		49		±0.05	
50 ±0.10		50		±0.05	
51 ±0.10		51		±0.05	
52 ±0.10		52		±0.05	
53 ±0.10		53		±0.05	
54 ±0.10		54		±0.05	
55 ±0.10		55		±0.05	
56 ±0.10		56		±0.05	
57 ±0.10		57		±0.05	
58 ±0.10		58		±0.05	
59 ±0.10		59		±0.05	
60 ±0.10		60		±0.05	
61 ±0.10		61		±0.05	
62 ±0.10		62		±0.05	
63 ±0.10		63		±0.05	
64 ±0.10		64		±0.05	
65 ±0.10		65		±0.05	
66 ±0.10		66		±0.05	
67 ±0.10		67		±0.05	
68 ±0.10		68		±0.05	
69 ±0.10		69		±0.05	
70 ±0.10		70		±0.05	
71 ±0.10		71		±0.05	
72 ±0.10		72		±0.05	
73 ±0.10		73		±0.05	
74 ±0.10		74		±0.05	
75 ±0.10		75		±0.05	
76 ±0.10		76		±0.05	
77 ±0.10		77		±0.05	
78 ±0.10		78		±0.05	
79 ±0.10		79		±0.05	
80 ±0.10		80		±0.05	
81 ±0.10		81		±0.05	
82 ±0.10		82		±0.05	
83 ±0.10		83		±0.05	
84 ±0.10		84		±0.05	
85 ±0.10		85		±0.05	
86 ±0.10		86		±0.05	
87 ±0.10		87		±0.05	
88 ±0.10		88		±0.05	
89 ±0.10		89		±0.05	
90 ±0.10		90		±0.05	
91 ±0.10		91		±0.05	
92 ±0.10		92		±0.05	
93 ±0.10		93		±0.05	
94 ±0.10		94		±0.05	
95 ±0.10		95		±0.05	
96 ±0.10		96		±0.05	
97 ±0.10		97		±0.05	
98 ±0.10		98		±0.05	
99 ±0.10		99		±0.05	
100 ±0.10		100		±0.05	