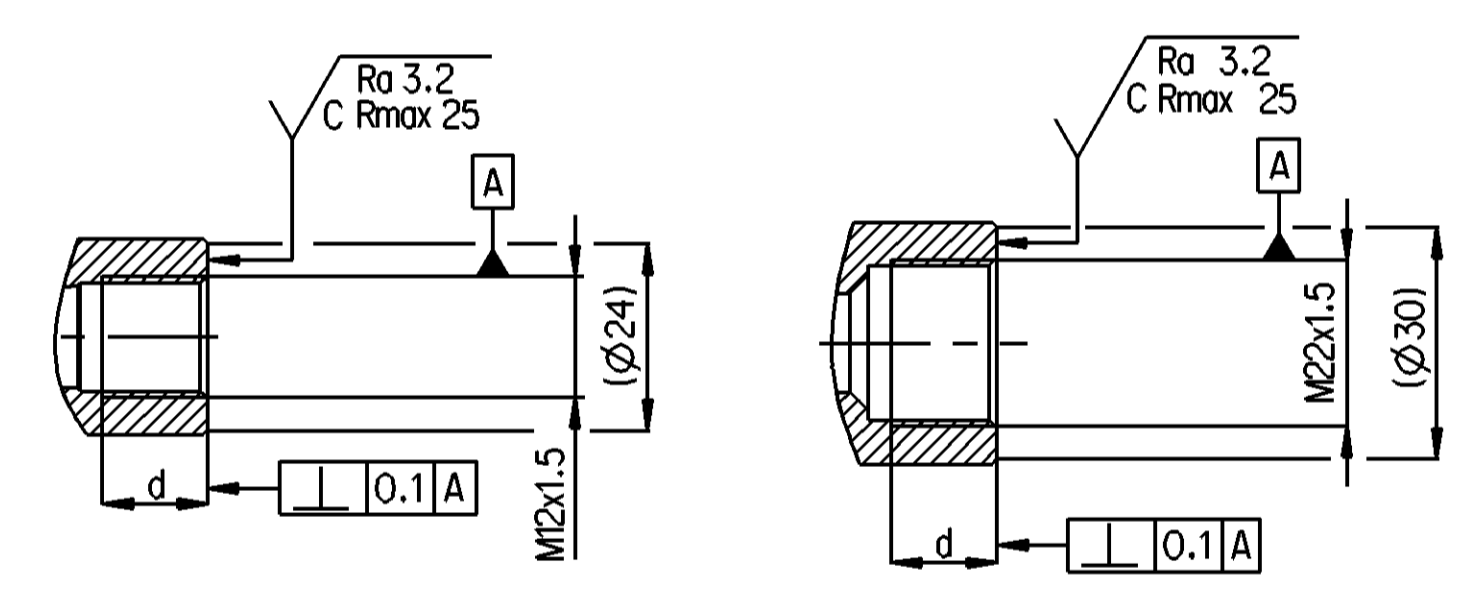
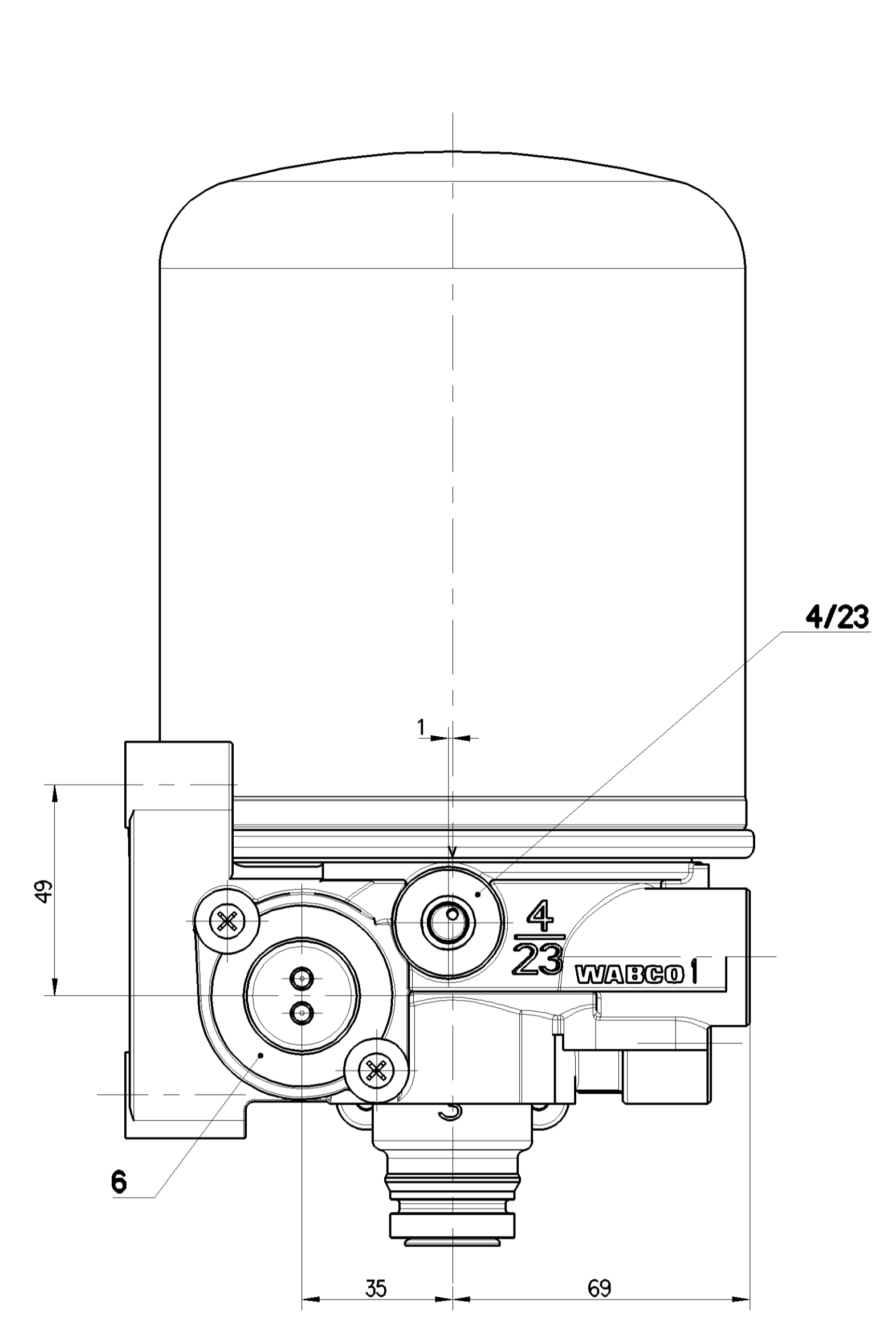
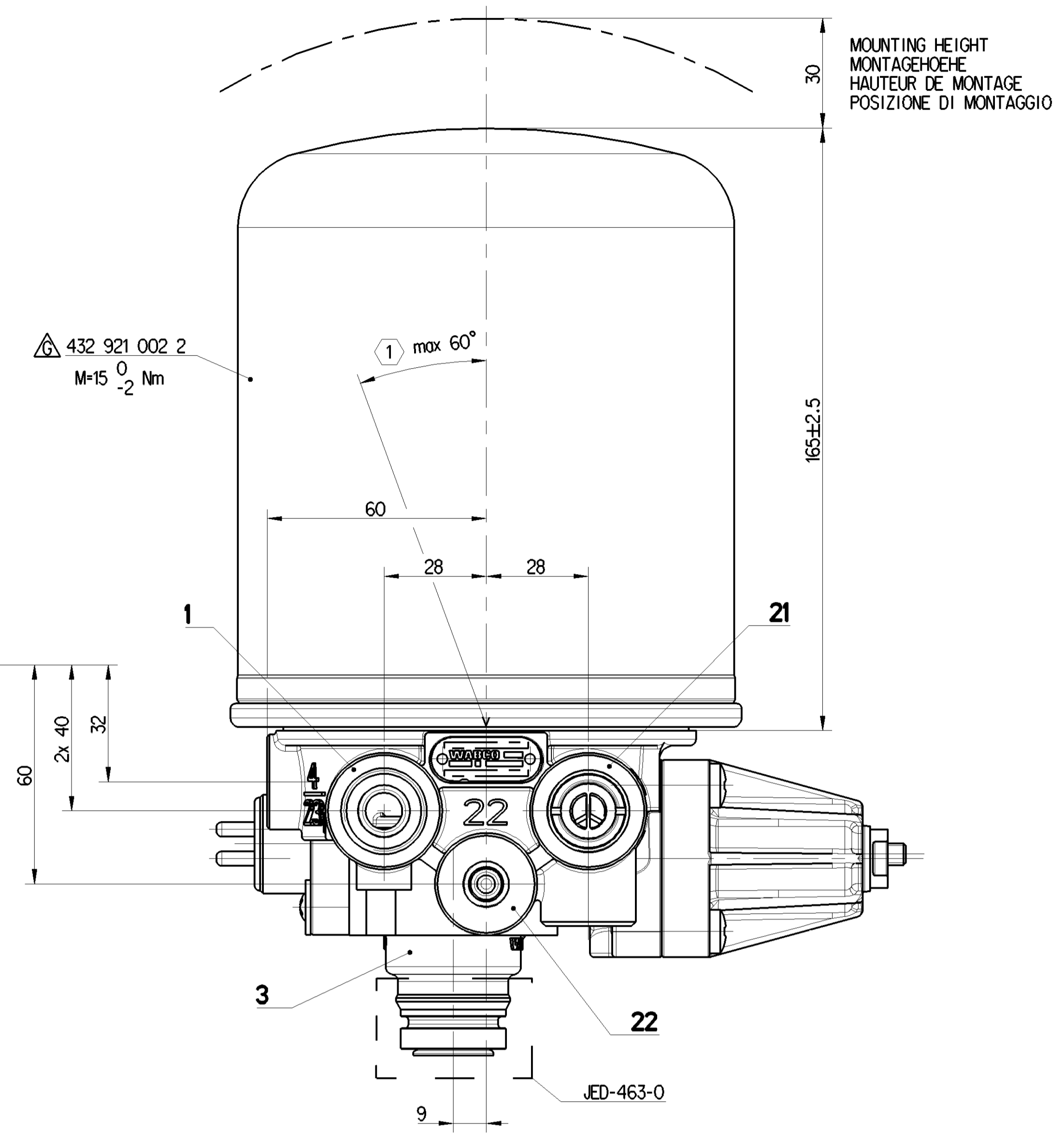
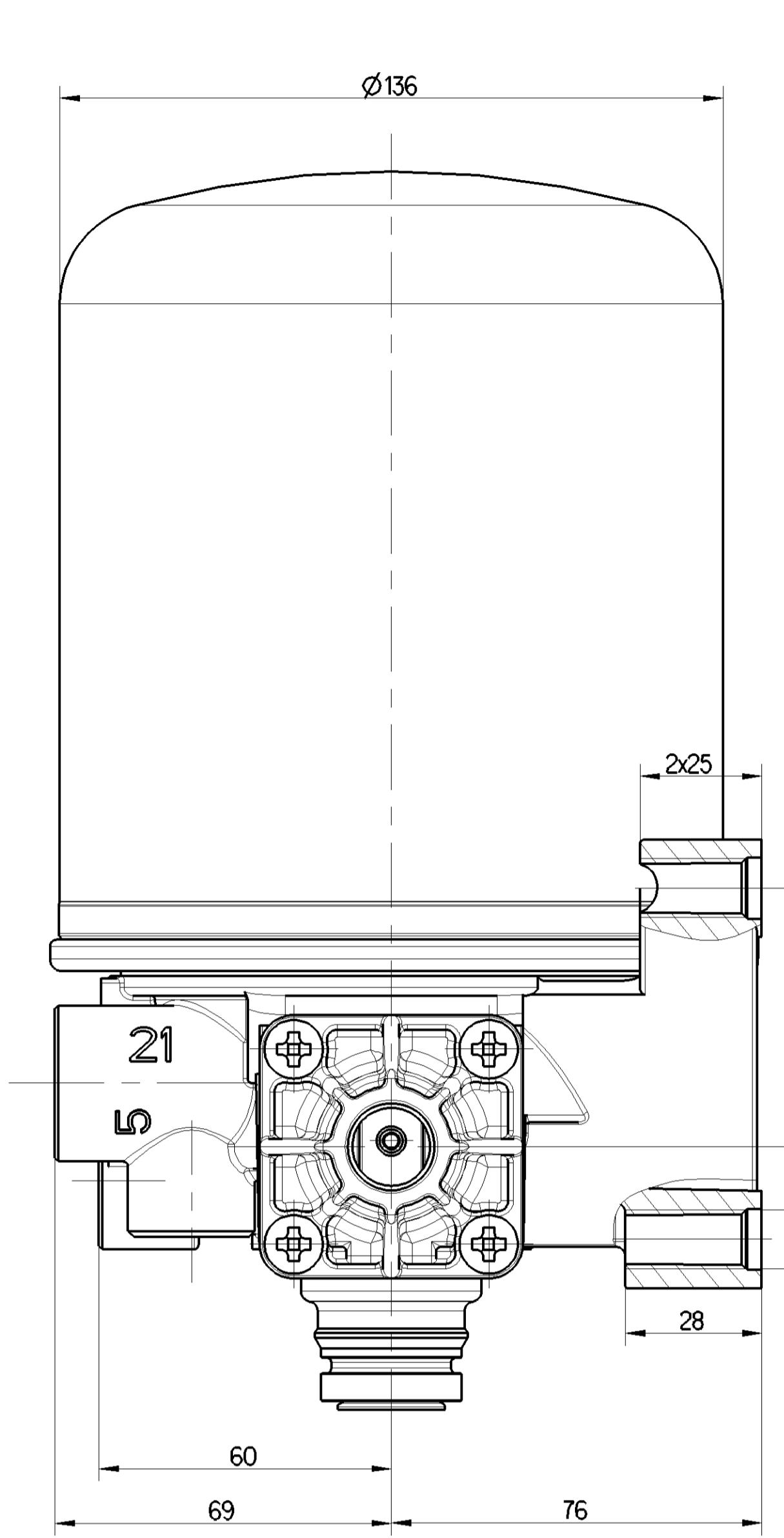
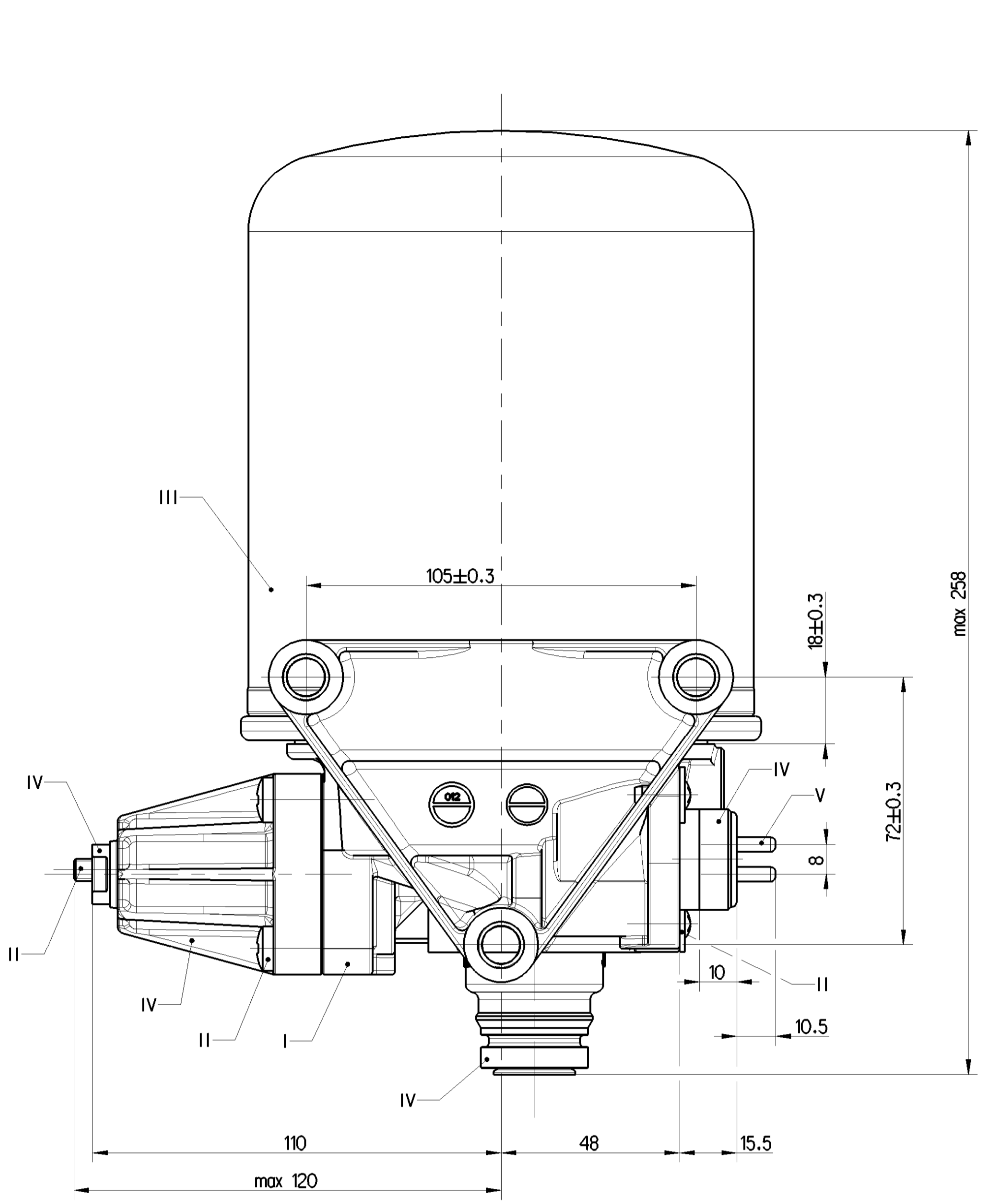
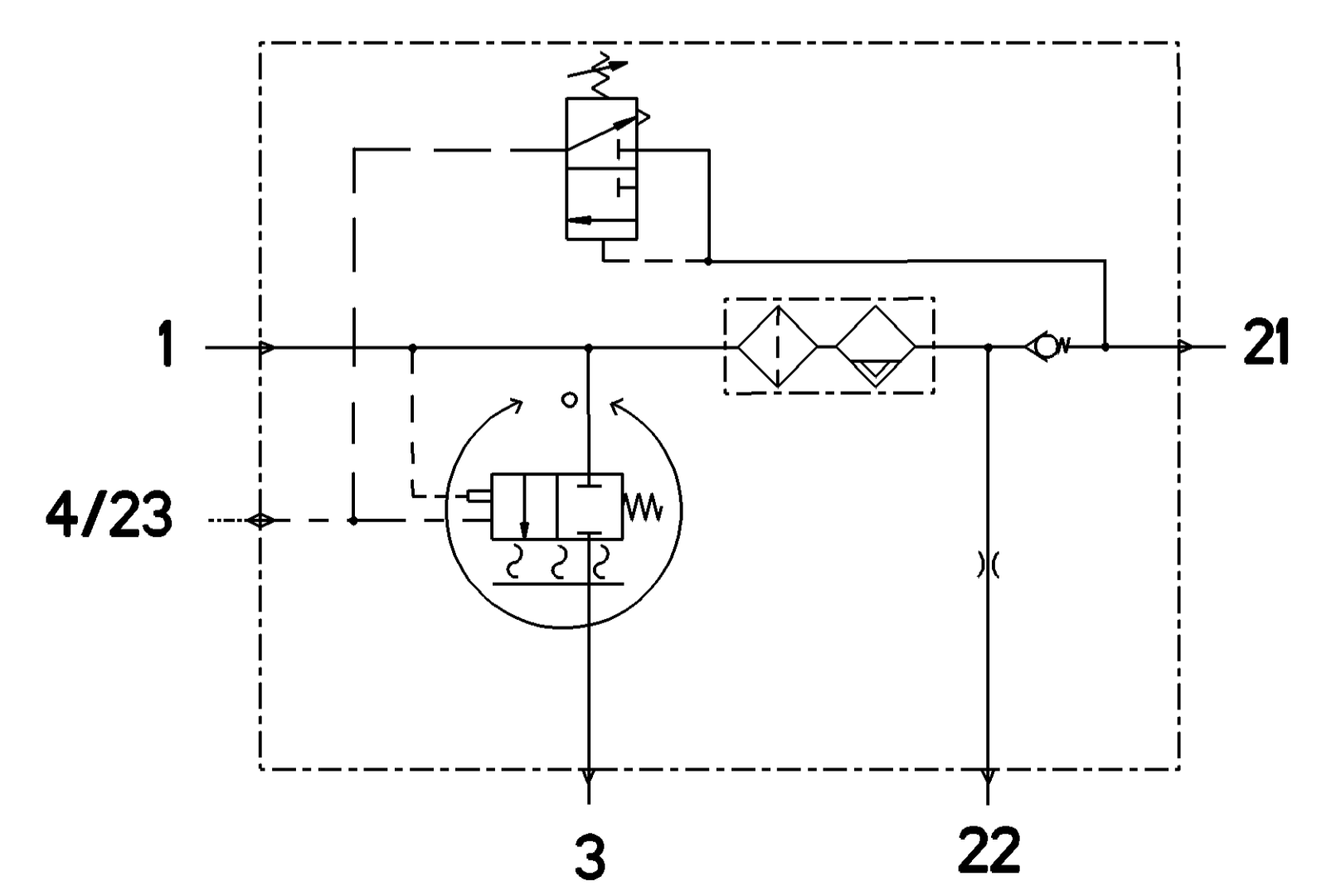


PART CODE	MATERIAL	SURFACE PROTECTION
I	ALUMINIUM ALLOY	CHROMATED
II	STEEL	ZINK PLATED
III	STEEL	PAINTED
IV	PLASTIC	NO TREATMENT
V	COPPER	SILVER COATING



**TECHNICAL DATA, TECHNISCHE DATEN, CARATTERISTICHE TECNICHE, CARATTERISTICHE TECNICHE**

<b>THERMAL RANGE OF CONTINUOUS APPLICATION:</b> THERMISCHER DAUERANWENDUNGSBEREICH: PLAGE DE TEMPERATURE EN UTILISATION CONTINUE: COMPO DI APPLICAZIONE CONTINUA:	-40°C.....+65°C	
<b>RESISTANCE TO HEAT:</b> WAERMEBESTAENDIGKEIT: RESISTANCE A LA CHALEUR: RESISTANZA AL CALORE:	max +80°C	
<b>MEDIUM:</b> MEDIUM: FLUIDE: FLUIDO:	COMPRESSED AIR DRUCKLUFT AIR COMPRIE ARIA COMPRESSA	
<b>WORKING PRESSURE:</b> BETRIEBSDRUCK: PRESSION DE SERVICE: PRESSIONE D' ESERCIZIO:	p <sub>g</sub> max=10 bar	
<b>MAX. PERMISSIBLE FREQUENCY:</b> MAX. ZULAESSIGE FREQUENZ: MAX. AMMISSIBILE FREQUENZE: MAX. AMMISSIBILE FREQUENZA:	50 Hz	
<b>MAX. PERMISSIBLE ACCELERATION:</b> MAX. ZULAESSIGE BESCHLEUNIGUNG: ACCELERATION MAX. AMMISSIBILE: ACCELERAZIONE MAX. AMMESSA:	±10g	
<b>TORQUE FOR CONNECTIONS:</b> ANZUGSMOMENT FUER EINSCHRAUBSTUTZEN: COUPLE DE SERRAGE DES RACCORDS: COPPIA DI SERRAGGIO DEI RACCORDI:	M12x1.5: Mmax=21 Nm M22x1.5: Mmax=53 Nm	
<b>COMBINED UNLOADER:</b> DRUCKREGLER: REGULATEUR DE PRESS: GRUPPO DI REGOLAZIONE:		<b>CUT-IN TEMPERATURE:</b> EINSCHALT-TEMPERATUR: TEMPERATURE DE FERMETURE: TEMPERATURA DI CHIUSURA:
<b>CUT OUT PRESSURE:</b> ABSCHALTDRUCK: PRESSION DE DECLENC: PRESSIONE D' APERTURA:	8.5±0.2 bar	<b>CUT-OFF TEMPERATURE:</b> AUSSCHALT-TEMPERATUR: TEMPERATURE DE MISE: TEMPERATURA DI APERTURA:
<b>OPERATING RANGE:</b> SCHALTSPANNE: PLAGE DE REGULATION: GAMME DI REGUL:	0.7 +0.5/0 bar	<b>BATTERY VOLTAGE:</b> BATTERIESPANNUNG: TENSION DE BATTERIE: TENSIONE DI BATTERIA:
<b>DYNAMIC PRESSURE OF THE SAFETY VALVE:</b> STAUDRUCK DES SICHERHEITSVENTILES: PRESSION DYNAMIQUE DU SOUPEPE DE SECURITE: PRESSIONE DINAMICA DELLA VALVOLA DI SICUREZZA:	≤14.5 (BY V <sub>n</sub> =100dm <sup>3</sup> /min.) bar	<b>NOMINAL POWER:</b> NENNLEISTUNG: PULSSANCE NOMINALE: POTENZA NIMINALE:
<b>INSTALLATION POSITION</b> EINBAULAGE POSITION D'INSTALLATION POSIZIONE DI MONTAGGIO		<b>POWER WITH 24V DC:</b> LEISTUNG BEI 24V DC: PUISSANCE AVEC 24V DC: POTENZA CON 24V DC:
		7 <sup>+</sup> ±6°C
		29.5 <sup>+</sup> ±3.0°C
		24.0 V DC
		100W
		95 0/-5W



PORT ANSCHLUSS ORIFICE ORIFIZIO	FUNCTION FONCTION FUNZIONE	THREAD GEWINDE FILETTAGE FILETTATURA
1	FROM THE COMPRESSOR VOM LUFTPRESSER PROVENANT DU COMPRESSEUR PROVENIENTE DEL COMPRESORE	M22x1.5 d=15
21	TO THE RESERVOIRS ZU DEN LUFTBHAELTERN AUX RESERVOIRS D'AIR REGENERE AL SERBATOII PER	M22x1.5 d=16
22	TO THE RESERVOIRS FOR REGENERATED AIR ZUM REGENERATIONS-LUFTBHAELTER AUX RESERVOIRS D'AIR REGENERE AL SERBATOII PER L'ARIA RIGENERATA	M12x1.5 d=12
3	EXHAUST FOR COMPRESSED AIR ENTLUEFTUNG FUER DRUCKLUFT ECHAPPEMENT POUR AIR COMPRIE SCARIO PER ARIA COMPRESSA	-
4/23	CONTROL PORT / TO COMPRESSOR STEUERANSCHLUSS / ZUM KOMPRESSOR ORIFICE DE COMMANDE / AU COMPRESSEUR ORIFIZIO DI COMANDO / A COMPRESORE	M12x1.5 d=12
6	HEATER HEIZUNG CHAUFFAGE RISCALDAMENTO	M27x1

General Specification: ISO 8015, ISO 15424-1, ISO 15424-2, ISO 15424-3, ISO 15424-4, ISO 15424-5, ISO 15424-6, ISO 15424-7, ISO 15424-8, ISO 15424-9, ISO 15424-10, ISO 15424-11, ISO 15424-12, ISO 15424-13, ISO 15424-14, ISO 15424-15, ISO 15424-16, ISO 15424-17, ISO 15424-18, ISO 15424-19, ISO 15424-20, ISO 15424-21, ISO 15424-22, ISO 15424-23, ISO 15424-24, ISO 15424-25, ISO 15424-26, ISO 15424-27, ISO 15424-28, ISO 15424-29, ISO 15424-30, ISO 15424-31, ISO 15424-32, ISO 15424-33, ISO 15424-34, ISO 15424-35, ISO 15424-36, ISO 15424-37, ISO 15424-38, ISO 15424-39, ISO 15424-40, ISO 15424-41, ISO 15424-42, ISO 15424-43, ISO 15424-44, ISO 15424-45, ISO 15424-46, ISO 15424-47, ISO 15424-48, ISO 15424-49, ISO 15424-50, ISO 15424-51, ISO 15424-52, ISO 15424-53, ISO 15424-54, ISO 15424-55, ISO 15424-56, ISO 15424-57, ISO 15424-58, ISO 15424-59, ISO 15424-60, ISO 15424-61, ISO 15424-62, ISO 15424-63, ISO 15424-64, ISO 15424-65, ISO 15424-66, ISO 15424-67, ISO 15424-68, ISO 15424-69, ISO 15424-70, ISO 15424-71, ISO 15424-72, ISO 15424-73, ISO 15424-74, ISO 15424-75, ISO 15424-76, ISO 15424-77, ISO 15424-78, ISO 15424-79, ISO 15424-80, ISO 15424-81, ISO 15424-82, ISO 15424-83, ISO 15424-84, ISO 15424-85, ISO 15424-86, ISO 15424-87, ISO 15424-88, ISO 15424-89, ISO 15424-90, ISO 15424-91, ISO 15424-92, ISO 15424-93, ISO 15424-94, ISO 15424-95, ISO 15424-96, ISO 15424-97, ISO 15424-98, ISO 15424-99, ISO 15424-100.

Doc. Code: 025  
2023-07-21  
1:1  
432 410 152 0  
005 ML 1/1