

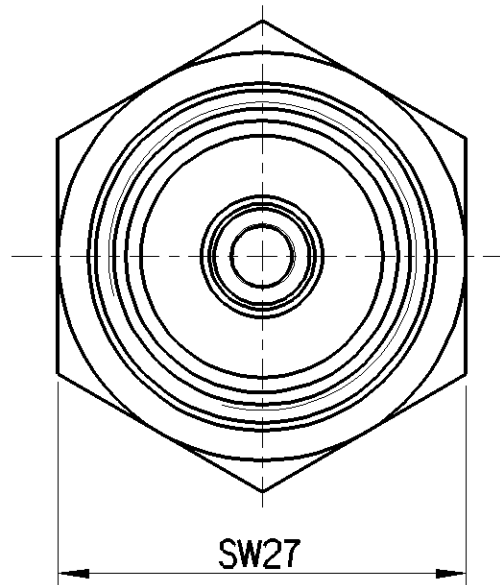
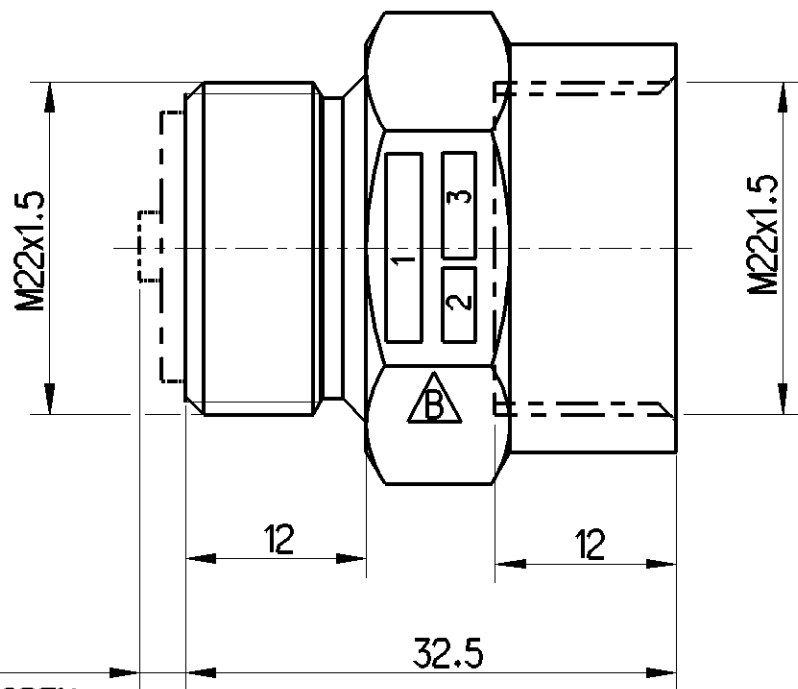
Non e permesso consegnare a terzi o riprodurre questo documento, ne utilizzare il contenuto o renderlo comunque noto a terzi senza autorizzazione esplicita. Ogni infrazione costituirà un evidente abuso e comporterà il risarcimento dei danni subiti. E' fatta riserva di tutti i diritti derivanti da brevetti o modelli.

Copying of this document and giving it to others and the use or communication of the contents thereof, are forbidden without express authority. Contravention of this restriction will constitute an evident abuse and result in a liability to the payment of damages. All rights are reserved in the event of the grant of patent or registration of a utility model or design. This document is the subject of copyright.

Toute communication ou reproduction de ce document, toute exploitation ou communication de son contenu sont interdites, sauf autorisation expresse. Tout manquement a cette regle constitue un abus evident et expose son auteur au versement de dommages et interets. Tous droits de propriete industrielle reserves, notamment en matiere de brevets et de modesles.

Weitergabe sowie Vervielfaeligung dieser Unterlage, Verwertung und Mitteilung ihres Inhalts nicht gestattet, soweit nicht ausdruecklich zugestanden. Zuwiderhandlungen stellen einen offensichtlichen Missbrauch dar und verpflichten zu Schadenersatz. Alle Rechte fuer den Fall der Patenterteilung oder Gebrauchsmuster-Eintragung vorbehalten.

DIRECTION OF FLOW  
STROEMUNGSRICHTUNG  
DIRECTION DU FLUX  
DIREZIONE DEL FLUSSO



WORKING PRESSURE:  
BETRIEBSDRUCK: MAX 8 BAR  
PRESSION D UTILISATION:  
PRESSIONE DI ESERCIZIO:

FLOWTHROUGH:  
FALAECHEN DER DURCHSTROEMUNG:  
SECTION DE PASSAGE D AIR: 0.45 cm<sup>2</sup>  
SEZIONE PASSAGION ARIA:

MAX3

WHEN VALVE IS OPEN  
BEI GEOEFNETEM VENTIL  
A CLAPET DE RETENUE OUVERT  
CON VALVOLA APERTA

**B** MARKED DETAILS WITH:  
1. PART NUMBER  
2. PRODUCTION PLANT  
3. WEEK\YEAR

MARKIERTE DETAILS MIT:  
1. TEILE NR.  
2. FERTIGUNGSWERK  
3. WOCHEN\JAHR

DÉTAILS MARQUÉS AVEC :  
1. NO. DE PIECE  
2. USINE DE PRODUCTION  
3. SEMAINE\ANNEE

DETTAGLI SEGNALATI CON:  
1. PARTICOLARE NO.  
2. STABILIMENTO DI PRODUZIONE  
3. SETTIMANA\ANNO

General Specification: ISO 8015, JED-334-1, Size ISO 14405 LP					
Further Technical Data: PRODUCT SPECIFICATION					
Doc. Code: O35			Sheet: 1 To 2		
General Tolerances JED-261					
	Range of nominal dimensions in mm				
Class 1)	≤ 50	> 50 ≤ 180	> 180 ≤ 400	> 400	
Fine	±0.5	±1	±1.5	±2	±3°
Medium	X ±1	±2	±3	±4	
Coarse	±2	±3.5	±5	±6.5	
Tapped Holes acc.					
1) Tolerance Class Applied Crossmarked					

Copyright WABCO®	
Date	Signature
2022-04-27	Ganesan
Checked	
2022-06-24	Schul T
Dimensions in mm	
Mass	Scale
0.076 kg	2:1
Size	CAD System
A 3	CREO

<b>WABCO</b>		
CHECK VALVE RUECKSCHLAGVENTIL CLAPET DE RETENUE VALVOLA DI RITORNO		
Material No.		Date of first issue: 2010-09-29
434 023 000 0		Doc.Code Language Sheet
005	ML	1/1
ECN-No.	Revision	Techn. Resp.
510482	2x B	5140
Replacement for		
-		

