

TORQUE FOR CONNECTIONS
ANZUGSMOMENT FÜR EINSCHRAUBSTUTZEN
COUPLE DE SERRAGE DES RACCORDS
COPPIA DI SERRAGIO DEI RACCORDI

53 Nm. MAX

WORKING POSITION
EINBAULAGE
POSITION DE FONCTIONNEMENT
POSIZIONE DI FUNZIONAMENTO

UNIMPORTANT
BELIEBIG
INDIFFERENTE
INDIFFERENTE

CONTROL FLUID
STEUERMEDIUM
FLUIDE DE COMMANDE
FLUIDO DI COMANDO

AIR
LUFT
AIR
ARIA

THERMAL RANGE
THERM ANWENDUGSBEREICH
TEMPERATURE D'UTILISATION
TEMPERATURA DI UTILIZZAZIONE

-40°C...+80°C

AIR PRESSURE INLET
DRUCKLUFT
PRESSION PNEUMATIQUE D'ALIMENTATION
PRESSIONE PNEUMATICO DI ALIMENTAZIONE

10 BAR MAX

MARKING OF PORTS
KENNZEICHNUNG DER ANSCHLUESSE
MARQUAGE DES ORIFICES
MARCATURA DEGLI ORIFIZI

11

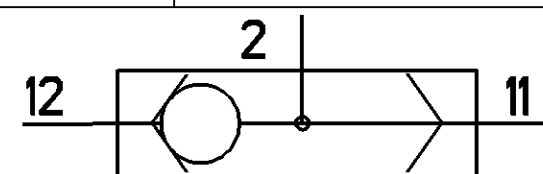
AIR INLET
VORRATSLEITUNG
ALIMENTATION
ALIMENTAZIONE

12

2

DELIVERY
AUSGESTEUERTE LUFT
UTILISATION
UTILIZZAZIONE

SYMBOL
SINNBILD
SYMBOLE
SIMBOLO



General Specification: JED-334-0			Copyright WABCO®		
Further Technical Data:			Date	Signature	
Doc. Code:	Sheet:	To:	2003-01-08	Antas	
General Tolerances JED-261			Checked		
Range of Nominal Dimensions (± mm)			2003-02-03		
Class 1)	≤ 50	> 50 ≤ 180	1.0	1.5	2.0
Fine	0.5	1.0	1.5	2.0	±3°
Medium X	1.0	2.0	3.0	4.0	
Coarse	2.0	3.5	5.0	6.5	
Tapped Holes acc.			Expert		
State of Revision			Czapiewski		
1) Tolerance Class Applied Crossmarked			Mass	Scale	Material No.
114425	4x	2007-09-13	0.153	1:1	434 208 029 0
087161	1x	2003-09-09	KG		005 ML 1/1
DCN-No.	Rev.	Date	Size	TR1	WABCO Id. No.: 4342080290
			A 2	510	Doc.Code Language Sheet
			Function Code CAD System Prod.Type Replacement for		
			Pro/E 0 0 X		

WABCO

DOUBLE CHECK VALVE
ZWEIWEGE VENTIL
DOUBLE VALVE D'ARRET
DOPPIA VALVOLA D'ARRESTO

005 ML 1/1

100mm

Non è permesso consegnare o terzi o riprodurre questo documento, ne utilizzare il contenuto o renderlo comunque noto a terzi senza permesso scritto dalla WABCO. È vietata espressamente la ristampa o l'uso non autorizzato in qualsiasi forma e con qualsiasi mezzo. E' fatto riserva di tutti i diritti. Copying of this document and giving it to others and the use or communication of the contents thereof, are forbidden without express written permission of WABCO. It is expressly prohibited to reproduce or use this document in any form and by any means. All rights are reserved in the event of the grant of patent or registration of a utility model or design. This document is the subject of copyright.

Toute communication ou reproduction de ce document, toute exploitation ou communication de son contenu sont interdites, sauf autorisation expresse. Tout manquement à cette règle constitue un abus évident et expose son auteur au versement de dommages et intérêts. Toute réimpression ou utilisation non autorisée sans la permission écrite de la WABCO est formellement interdite. Toute réimpression ou utilisation non autorisée sans la permission écrite de la WABCO est formellement interdite. Weitergabe sowie Verfertigung dieser Unterlagen, Verwertung und Mitteilung ihres Inhaltes nicht autorisierten zugestanden. Zuwiderhandlungen stellen einen strafrechtlichen Missbrauch dar und verpflichten zu Schadenersatz. Alle Rechte für den Fall der Patentierung oder Gebrauchsmuster-Eintragung vorbehalten.