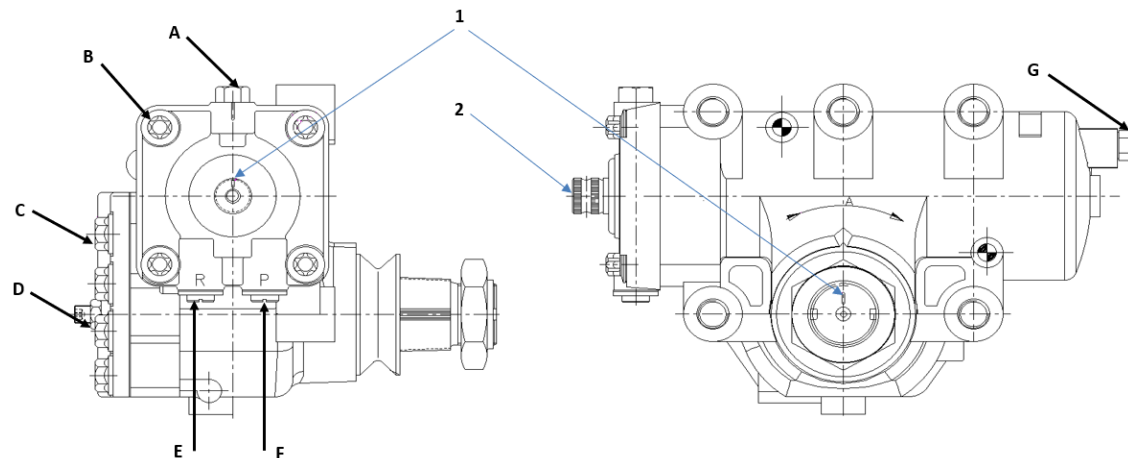


ID	Dimensions
A	RELIEF VALVE CAP TIGHTENING TORQUE 34-47.5Nm DRY
B	4 SCREWS - TORQUE 210-225 Nm DRY
C	8 SCREWS - TORQUE 280-300 Nm DRY
D	ADJUSTING SCREW - TORQUE 43-51Nm DRY
E	R-OUTPUT M18x1.5
F	P-INPUT M16x1.5
G	AUXILIARY PORT - TORQUE 68-82Nm




Max pressure:	175 ± 5 bar
Number of revolutions:	5.9
Flow:	16 l/min

Supplier reference:
JRB5020.WC (Rev. A – PS/25/07/2022)

<1>	Safety characteristics	0
<2>	Significant characteristics	0
<CI>	Customer Interface	0

ID	Remark
1	POSITION OF SIGNS FOR DRIVING STRAIGHT
2	1x79 PARALLEL GROOVES
3	INPUT SHAFT ROTATION MUST NOT EXCEED 24° (1.4 INPUT SHAFT REVOLUTIONS) FROM THE CENTER POSITION DEFINED BY THE VALVE AND COMBAL ALIGNMENT MARKS
4	THIS ASSEMBLY MATCHES : BY FUNCTIONAL TEST 31 881 036 DEPARTMENT 1 PAINTING ACCORDING TO SPECIFICATION (RS01) EMBOSSING ACCORDING TO (RS58)

General Specification: JED 331-D , Size 150 14605 E , JED 762		Rough Part No.			
-		-			
Treatment	Surface Protection	Material			
-	Black wet painting or zinc passivation	Iron			
Copyright WABCO®		<div>WABCO</div> <div>REMAN Steering gear</div>			
Date	Signature				
Drawn					
10.05.2023	D. Žuberek				
Checked					
12.05.2023	M.Mucha				
Expert					
M.Mucha					
Mass	Scale	Material No.	Date of first issue:		
40	N/A	440 005 020 R	Doc.Code	Language	Sheet
KG			005	EN	1/1
Size	CAD System				
A 4	CREO	EQN.No.	Revision	Techn. Resp.	Replacement for
		514092	A	7103_RM	-