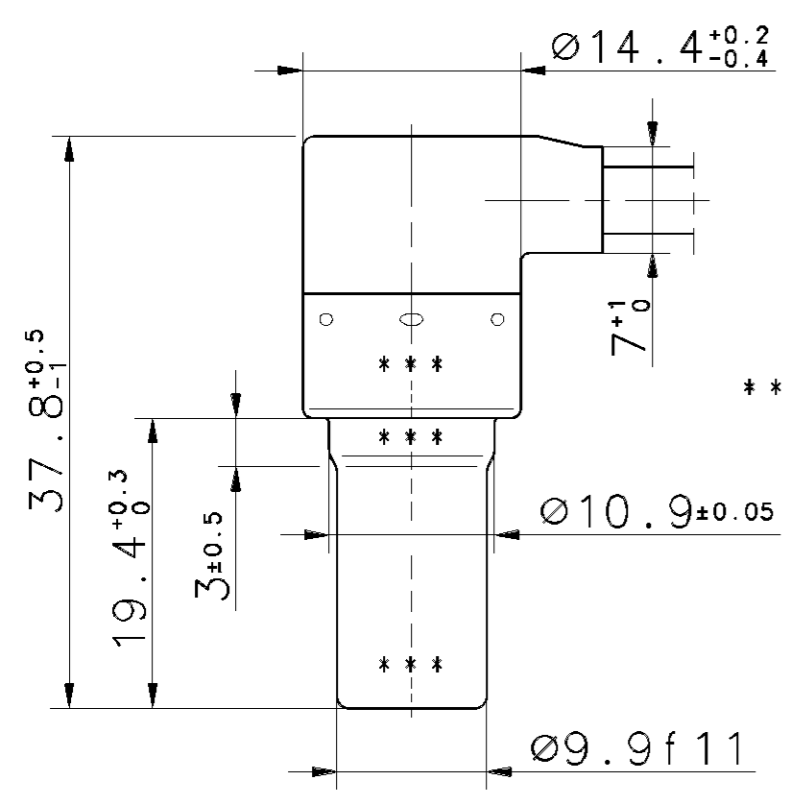


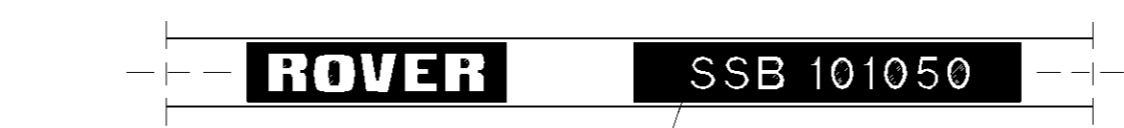
① PROTECTION CAP TO BE USED FOR DELIVERY
2:1



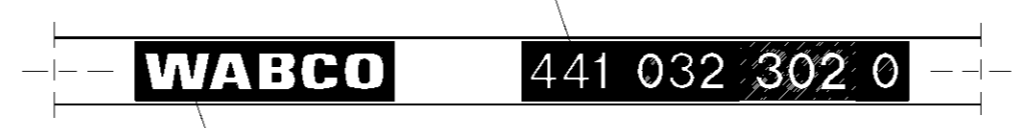
*** STAINLESS STEEL

**** SLIDING FORCE
VERSCHIEBEKRAFT
FORCE DE DEPLACEMENT
FORZA DI STRAPPO } F > 50 N

***** GAP ON BOTH SIDES PERMISSIBLE
SPALT BEIDSEITIG ZULAESSIG
AUX DEUX COTES ADMISSIBLE
DA DUE LATI AMMISSIBILE } MAX. 10mm



X 2:1
PART NO.
TEILE-NR. **
NO. DE PIECE
CODICE



WABCO-16-JED-369 **

* TWO CORE CABLE
LEITUNG ZWEIADRIG
CABLE A DEUX CONDUCTEURS
CAVO A DUE CONDUTORI } THERMORAD
2x0.5mm²
ASC 77799 A

** ABRASION RESISTANT PRINT
ABRIEBFESTER AUFDRUCK
RESISTANTE A L'ABRASION
RESISTENTE ALL'ABRASIONE } RAL 9001

BEND RADIUS CABLE
BIEGERADIUS KABEL
RAYON DE COURBURE DE CABLE
RAGGIO DI CURVATURA DEL CAVO } R 15 MIN, $\sphericalangle 90^\circ$

STRAIN RELIEF CABLE
ZUGENTLASTUNG KABEL
ARRET DE CABLE
SCARICO DI TRAZIONE DEL CAVO } MAX. 50N [1s], $\varphi = 20^\circ\text{C}$

COIL RESISTANCE
SPULENWIDERSTAND
RESISTANCE DE BOBINE
RESISTENZA DELLA BOBINA } 1050 ±100 Ω $\varphi = 20^\circ\text{C}$

PARTS NO. OF ROVER IN BRACKETS
ROVER-TEILENUMMER IN KLAMMERN
NO. DE PIECE DE ROVER ENTRE PARENTHESES
NO. DELLA PARTE DI ROVER FRA PARENTESI

THERMAL RANGE OF APPLICATION
THERMISCHER ANWENDUNGSBEREICH
GAMME D'APPLICATION THERMIQUE
CAMPO DI APPLICAZIONE TERMICA }
I -40°C... +150°C
+200°C [1h]
II -40°C... +150°C
+180°C [1h]
III -40°C... +180°C
+220°C [1h]
IV -40°C... +80°C

TYPE OF PROTECTION (IN CONNECTION WITH PLUG)
SCHUTZART (IN VERBINDUNG MIT STECKER)
MODE DE PROTECTION (DANS CONNECTION AVEC FICHE)
TIPO DI PROTEZIONE (NELLE INAUTIVO CON SPINOTTO) } IP 68 → EN 60529/IEC 529
IP 69K → DIN 40050 BL.9

FOR FURTHER TECHNICAL DATA SEE PRODUCT SPECIFICATION
WEITERE TECHNISCHE DATEN SIEHE PRODUKT SPEZIFIKATION
POUR AUTRES DONNEES TECHNIQUES VOIR PRODUCT SPECIFICATION
PER ULTERIORI DATI TECNICI VEDERE SPECIFICA DI PRODOTTO } 441 032 302 0

GENERAL SPECIFICATION: JED-334		CADAM-DRAWING COPYRIGHT		WABCO	
FURTHER TECHNICAL DATA:		DATE: 18-02-07		SIGNATURE: MARKUSZEWSKI	
DOC. CODE: SHEET: TO		DRAWN: 18-02-07		CHECKED: 18-02-07	
GENERAL TOLERANCES		MARKUSZEWSKI		GRUENDCKER	
RANGE OF NOMINAL DIMENSIONS (± mm)		STANDARDIZATION:		PRODUCT IDENTIFICATION NO.	
CLASS 1)	≤50	>50 ≤180	>180 ≤400	>400	175651 1x D 18-02-07
FINE	0,5	1,0	1,5	2,0	068392 1x C 99-10-04
MEDIUM	1,0	2,0	3,0	4,0	064003 3x B 97-07-25
COARSE	2,0	3,5	5,0	6,5	061594 3x A 97-04-21
TAPPED HOLES ACC. ISO 4039 / JED-152		DCN-NO.		REV.	
1) TOLERANCE CLASS APPLIED CROSSMARKED		DATE		DATE	
MASS		SCALE		PRODUCT IDENTIFICATION NO.	
1:1		1:1		441 032 302 0	
2:1		2:1		DOC. CODE	
SIZE		T.R.I.		SHEET	
A 2		141		605 1/1	
SHAPE CODE		REPLACEMENT FOR			
EXPERT CODE 760		PRODUCT TYPE 02			

NON E' PERMESSO CONSERVARE A TERZI O RIPRODURRE QUESTO DOCUMENTO. NE UTILIZZARNE IL CONTENUTO O RENDERSI RESPONSABILI PER QUALSIASI DANNI SUBITI. E' FATTA RISERVA DI TUTTI I DIRITTI DERIVANTI DA BREVETTI O MODELLI.
 COPIING OF THIS DOCUMENT AND ITS USE OR COMMUNICATION OF ITS CONTENTS THEREOF, WITHOUT THE WRITTEN PERMISSION OF THE DESIGNER, IS PROHIBITED. ALL RIGHTS ARE RESERVED IN THE EVENT OF THE ABUSE AND RESULT IN A LIABILITY TO THE PAYMENT OF DAMAGES.
 TOUPE COMMUNICATION OU REPRODUCTION DE CE DOCUMENT, TOUTE EXPLOITATION OU COMMUNICATION DE SON CONTENU, ENVIANT EN TROISIEME PERSONNE, SONT AUTOUR AU PERMETTRE DE DANNES ET INTERETS A TOUTS DROITS DE PROPRIETE INDUSTRIELLE RESERVES. NOTAMMENT EN MATIERE DE BREVETS ET DE MODELES.
 WELLEGABE SOMME VERVUELFAELTUNG DIESER UNTERLAGE, WERBUNG UND MITTEILUNG IHRES INHALTS NICHT OHNE SCHRIFTLICHE ZULASSUNG DES ENTWERFERS. ALLE RECHTE SIND VORBEHALTEN.