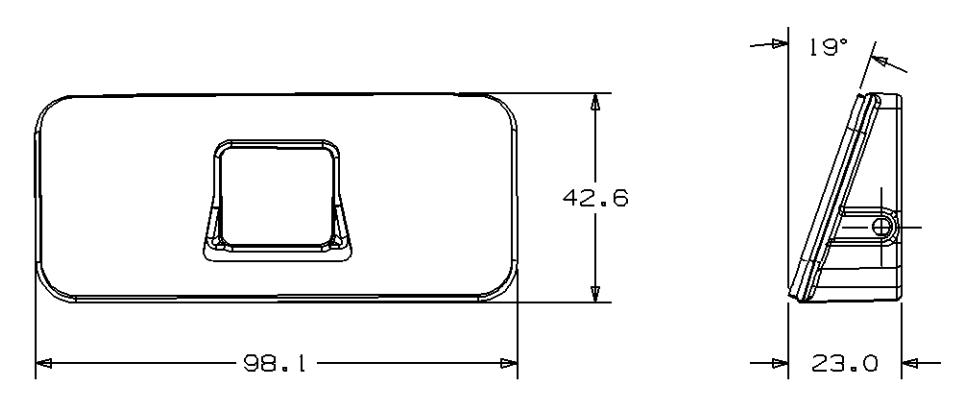
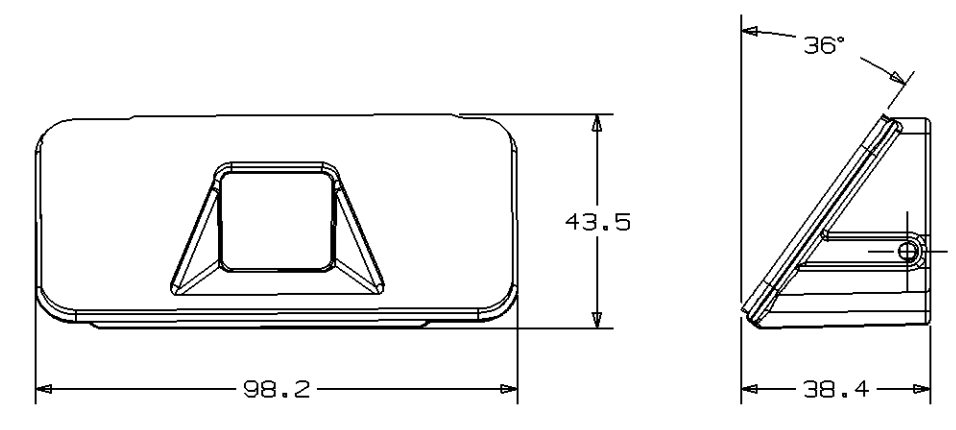


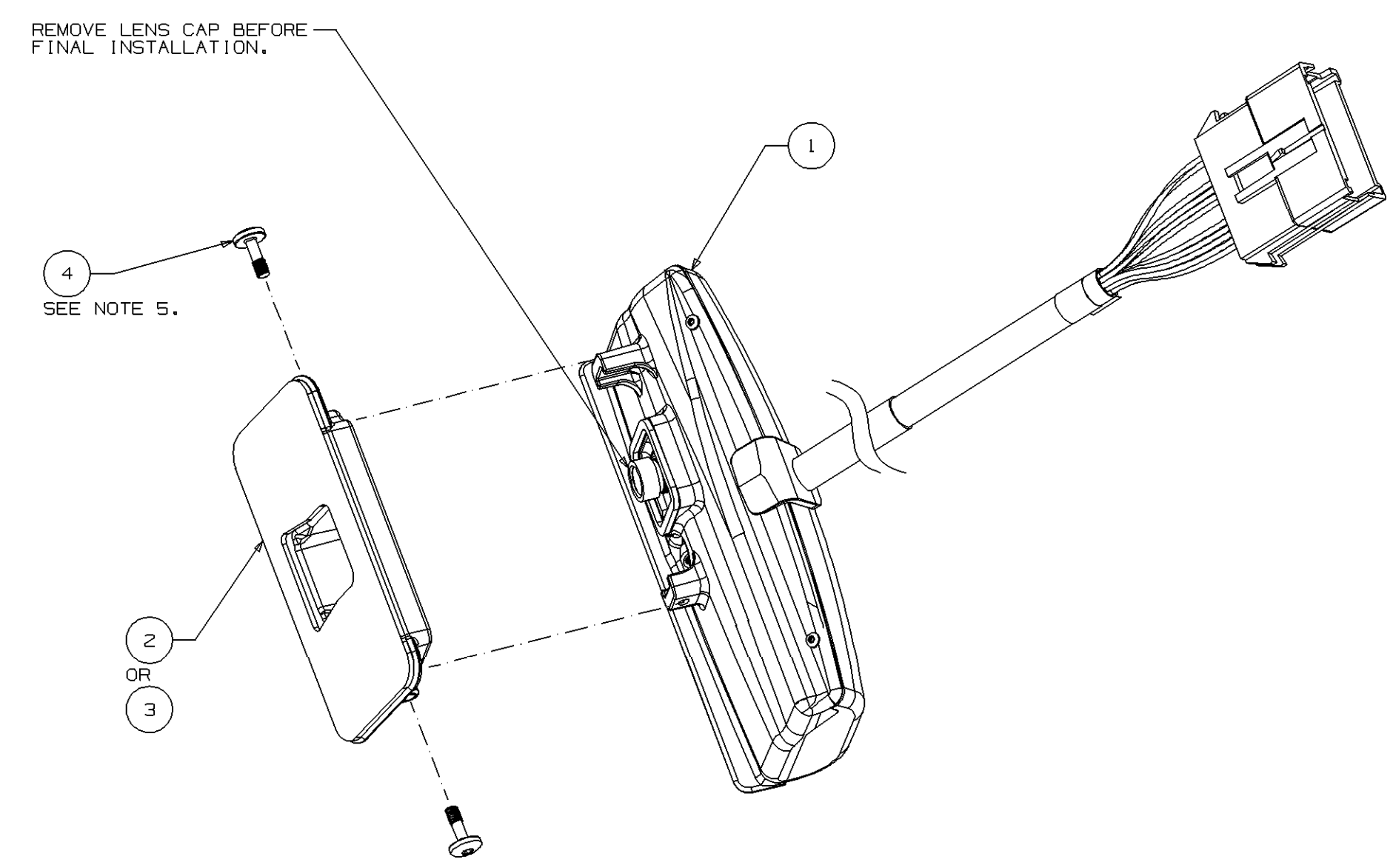
Note e permesso consegnare a terzi o riprodurre questo documento, ne utilizza il contenuto e riferisce come tale a terzi. È vietata espressamente la ristampa, la traduzione, la distribuzione, la comunicazione o l'uso non autorizzato senza permesso scritto dalla Delphi Packard. Copia di questo documento può essere fatta per uso personale o per uso interno di un'azienda. È vietata espressamente la ristampa, la traduzione, la distribuzione, la comunicazione o l'uso non autorizzato senza permesso scritto dalla Delphi Packard. Toute communication ou reproduction de ce document, toute exploitation ou communication de son contenu sont interdites, sauf autorisation écrite de la Delphi Packard. Toute utilisation non autorisée sans la permission écrite de la Delphi Packard est formellement interdite. Toute réimpression, toute traduction, toute distribution, toute communication ou utilisation non autorisée sans la permission écrite de la Delphi Packard est formellement interdite.



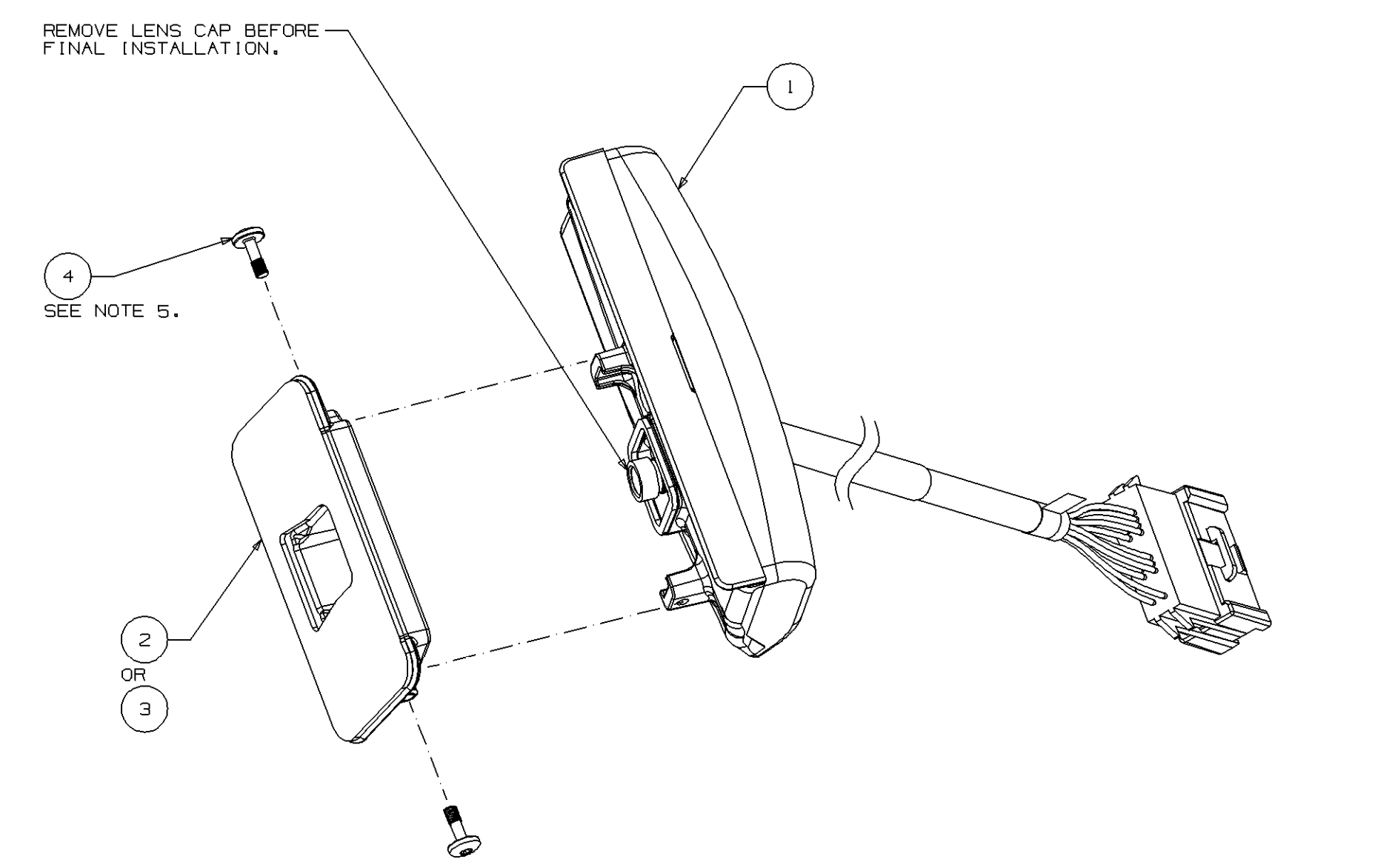
2 19° BRACKET ASSEMBLY



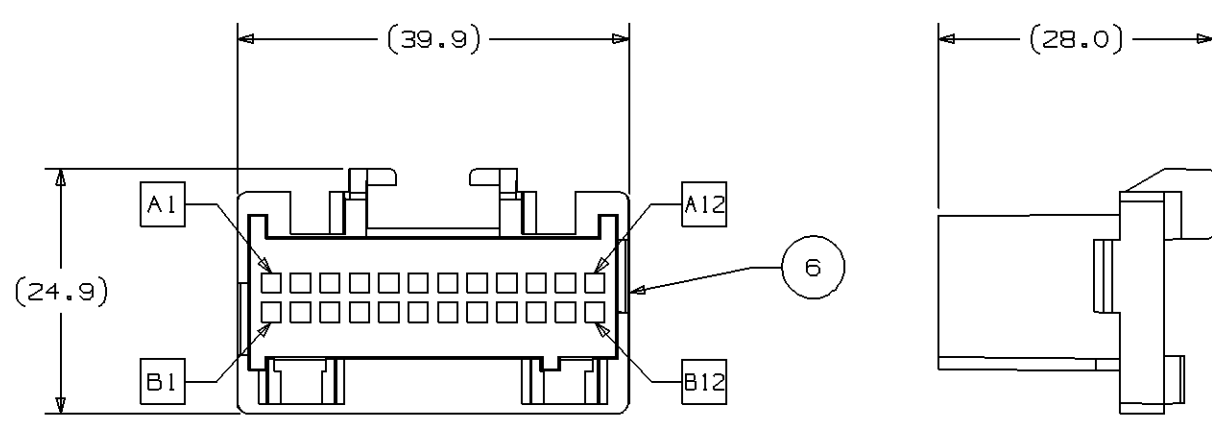
3 36° BRACKET ASSEMBLY



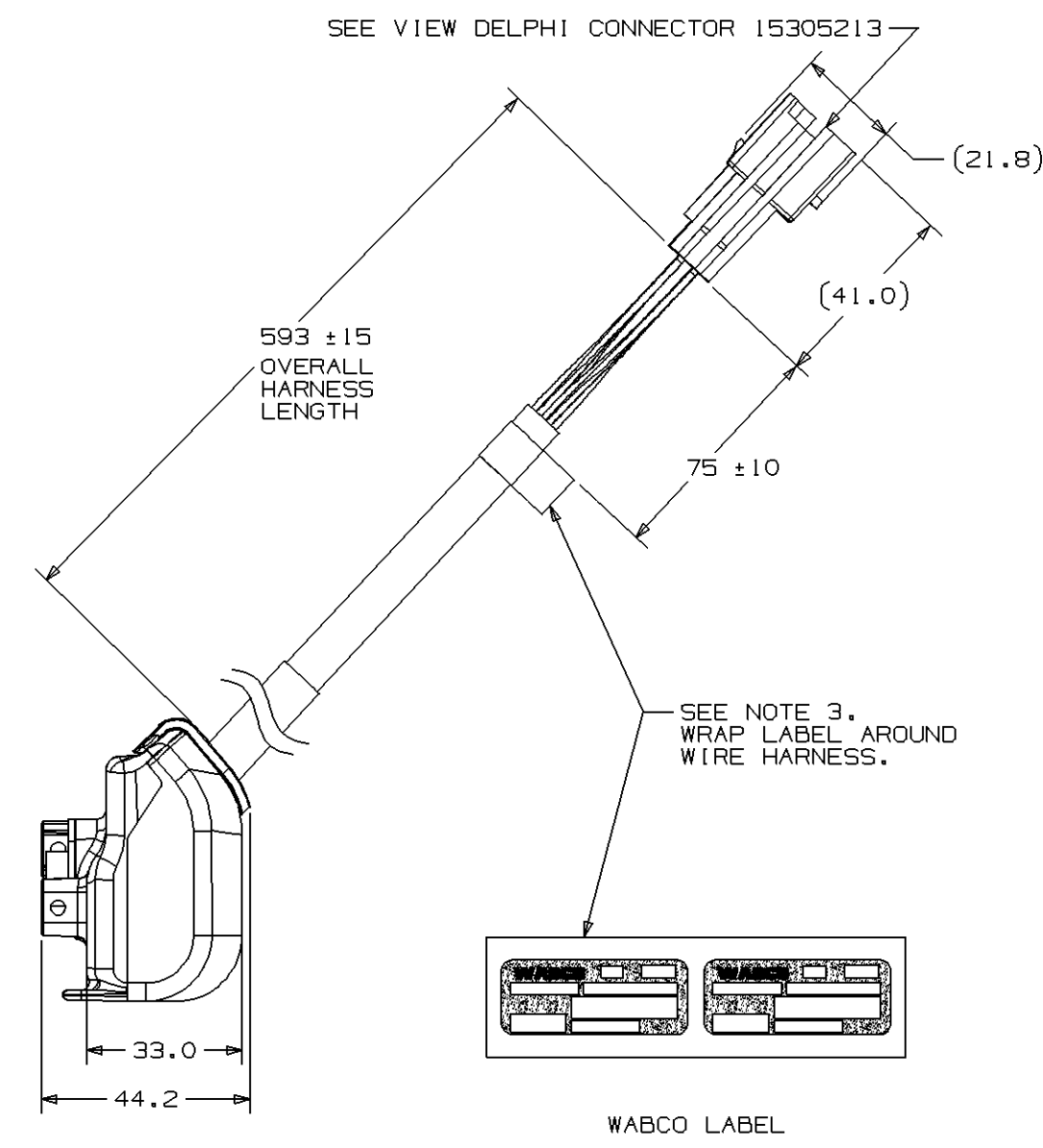
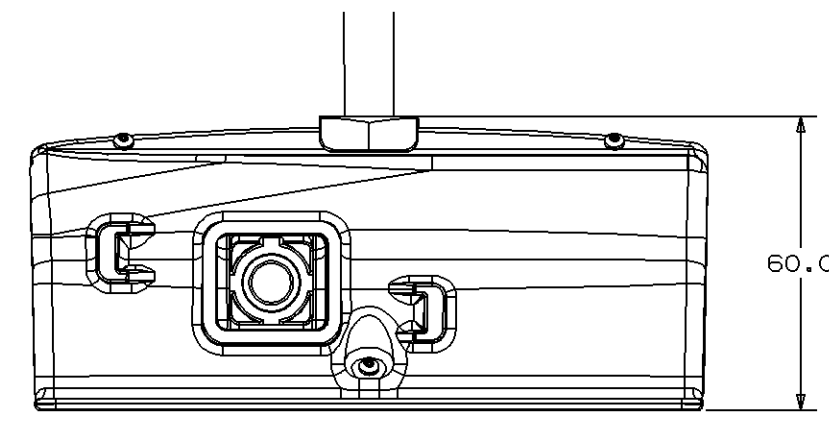
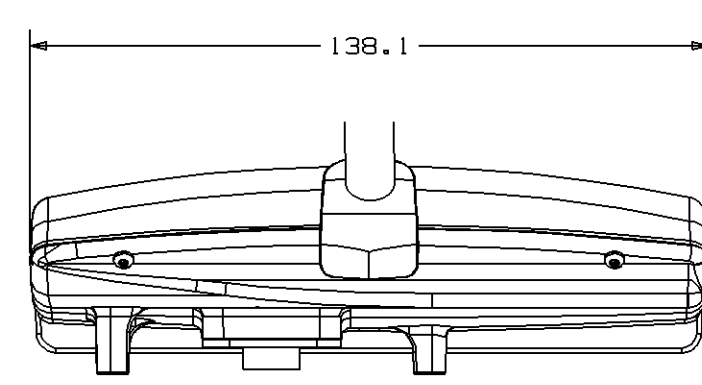
TOP MOUNT CONFIGURATION



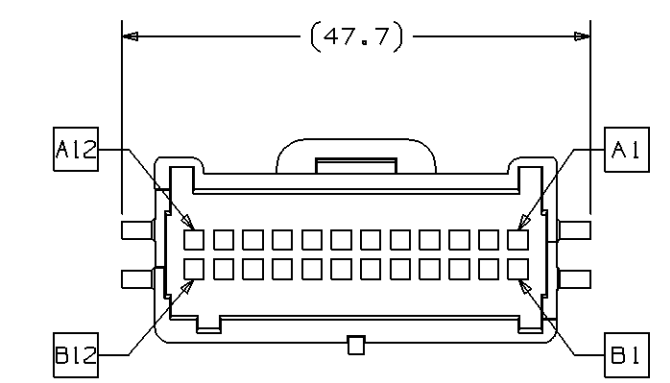
BOTTOM MOUNT CONFIGURATION



DELPHI CONNECTOR 12110088 SCALE 2:1



WABCO LABEL



DELPHI CONNECTOR 15305213 SCALE 2:1

- 6
- 7
- 8
- 9
- 10

ITEM #	DESCRIPTION	QUANTITY
6	FEMALE CONNECTOR	1
7	FEMALE CONNECTOR SHELL	1
8	SECONDARY LOCK - A	1
9	SECONDARY LOCK - B	1
10	FEMALE TERMINAL 0.35 - 0.6mm <sup>2</sup> (20AWG)	1
11	FEMALE TERMINAL 0.8 - 1.0mm <sup>2</sup> (18 AWG)	1

DELPHI 12110088 P/N #	CIRCUIT REFERENCE
A1	L SPEAKER (+)
A2	R SPEAKER (+)
A3	N/C
A4	L TURN SIGNAL
A5	N/C
A6	N/C
A7	LDWS DISABLED/ERROR INDICATOR OUTPUT OR AUDIO MUTE OUTPUT OR LEFT SEAT VIBRATOR OUTPUT
A8	BRAKE SWITCH
A9	IGNITION
A10	N/C
A11	N/C
A12	J1939_HI
B1	L SPEAKER (-)
B2	R SPEAKER (-)
B3	N/C
B4	R TURN SIGNAL
B5	N/C
B6	N/C
B7	LDWS "AVAILABLE TO WARN" INDICATOR OUTPUT OR AUDIO MUTE OUTPUT OR RIGHT SEAT VIBRATOR OUTPUT
B8	ENABLE/DISABLE SW
B9	GROUND
B10	N/C
B11	N/C
B12	J1939_LO

DELPHI 15305213 P/N #	CIRCUIT REFERENCE
A1	L SPEAKER (+)
A2	R SPEAKER (+)
A3	N/C
A4	L TURN SIGNAL
A5	N/C
A6	N/C
A7	LDWS DISABLED/ERROR INDICATOR OUTPUT OR AUDIO MUTE OUTPUT OR LEFT SEAT VIBRATOR OUTPUT
A8	BRAKE SWITCH
A9	IGNITION
A10	N/C
A11	N/C
A12	J1939_HI
B1	L SPEAKER (-)
B2	R SPEAKER (-)
B3	N/C
B4	R TURN SIGNAL
B5	N/C
B6	N/C
B7	LDWS "AVAILABLE TO WARN" INDICATOR OUTPUT OR AUDIO MUTE OUTPUT OR RIGHT SEAT VIBRATOR OUTPUT
B8	ENABLE/DISABLE SW
B9	GROUND
B10	N/C
B11	N/C
B12	J1939_LO

ITEM NUMBER	DESCRIPTION	QUANTITY
11	USER MANUAL	1
10	FEMALE TERMINAL	16
9	FEMALE TERMINAL	16
8	SECONDARY LOCK B	1
7	SECONDARY LOCK A	1
6	FEMALE CONNECTOR SHELL	1
5	INSTALLATION MANUAL	1
4	SCREW - M3.5 X 11	2
3	BRACKET ASSEMBLY - 36°	1
2	BRACKET ASSEMBLY - 19°	1
1	OnLane MODULE ASSEMBLY	1

- NOTE UNLESS OTHERWISE SPECIFIED:
- ALL DIMENSIONS IN MILLIMETERS.
  - GENERAL TOLERANCES:  
 LINEAR - X.X = ±0.3  
 - X.XX = ±0.13  
 ANGULAR - ±1°
  - REFERENCE WABCO DOCUMENT 446 069 010 0 - 922 AT LATEST REVISION FOR LABEL REQUIREMENTS.
  - PARTS SHALL BE FREE OF MOLD RELEASE, DIRT, GREASE, OIL, SALT RESIDUE, DETERGENTS AND OTHER PROCESSING CHEMICALS, FLASH, SINK, VOIDS, NICKS, SCRATCHES, TOOL MARKS, METAL FLAKES >0.13mm AND OTHER GENERAL CONTAMINANTS AND IMPERFECTIONS THAT MAY BE DETRIMENTAL TO PART FIT OR FUNCTION. (PERMISSIBLE; LESS THAN SIX METAL FLAKES <0.13mm ON INTERIOR SURFACES).
  - SCREW TORQUE: 2.5±0.4Nm
  - SEE MANUAL FOR INSTALLATION INSTRUCTIONS
  - BEFORE USE, THE UNIT HAS TO BE PARAMETERIZED ACCORDINGLY FOR THE RESPECTIVE VEHICLE TYPE AND INSTALLATION POSITION WITH WABCO PC DIAGNOSTICS

General Specifications: JED-334-0 - Size ISO 14405-1 E

Copyright WABCO®

Doc. Code: \_\_\_\_\_ Sheet: \_\_\_\_\_ To: \_\_\_\_\_

Date: 2013-01-24 | Drawn: \_\_\_\_\_ | Signature: \_\_\_\_\_

2013-02-01 | Checked: \_\_\_\_\_ | Expert: \_\_\_\_\_

2013-02-01 | Pandy: \_\_\_\_\_

Material No.: 446 069 010 0 | Date of first issue: 2013-02-01

Doc. Code: 005 | Language: EN | Sheet: 1/1

ECN No.: \_\_\_\_\_ | Revision: \_\_\_\_\_ | Techn. Resp.: \_\_\_\_\_ | Replaced by: \_\_\_\_\_

Size: A 1 | Pro/E | Tapped Holes acc. JED-192 | 6834 | 884 016 633 0

1) Tolerance Class Applied Crossmarked