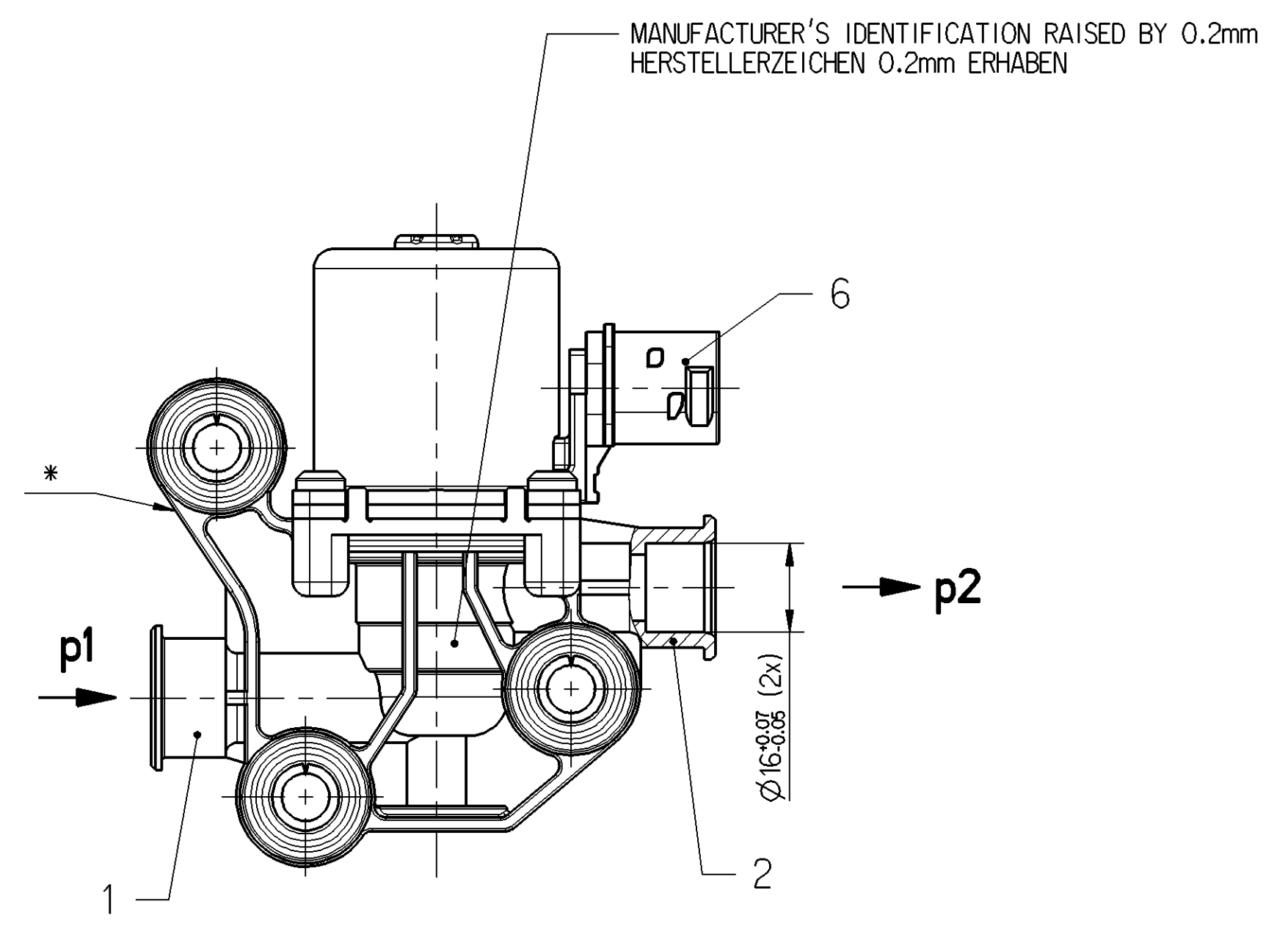
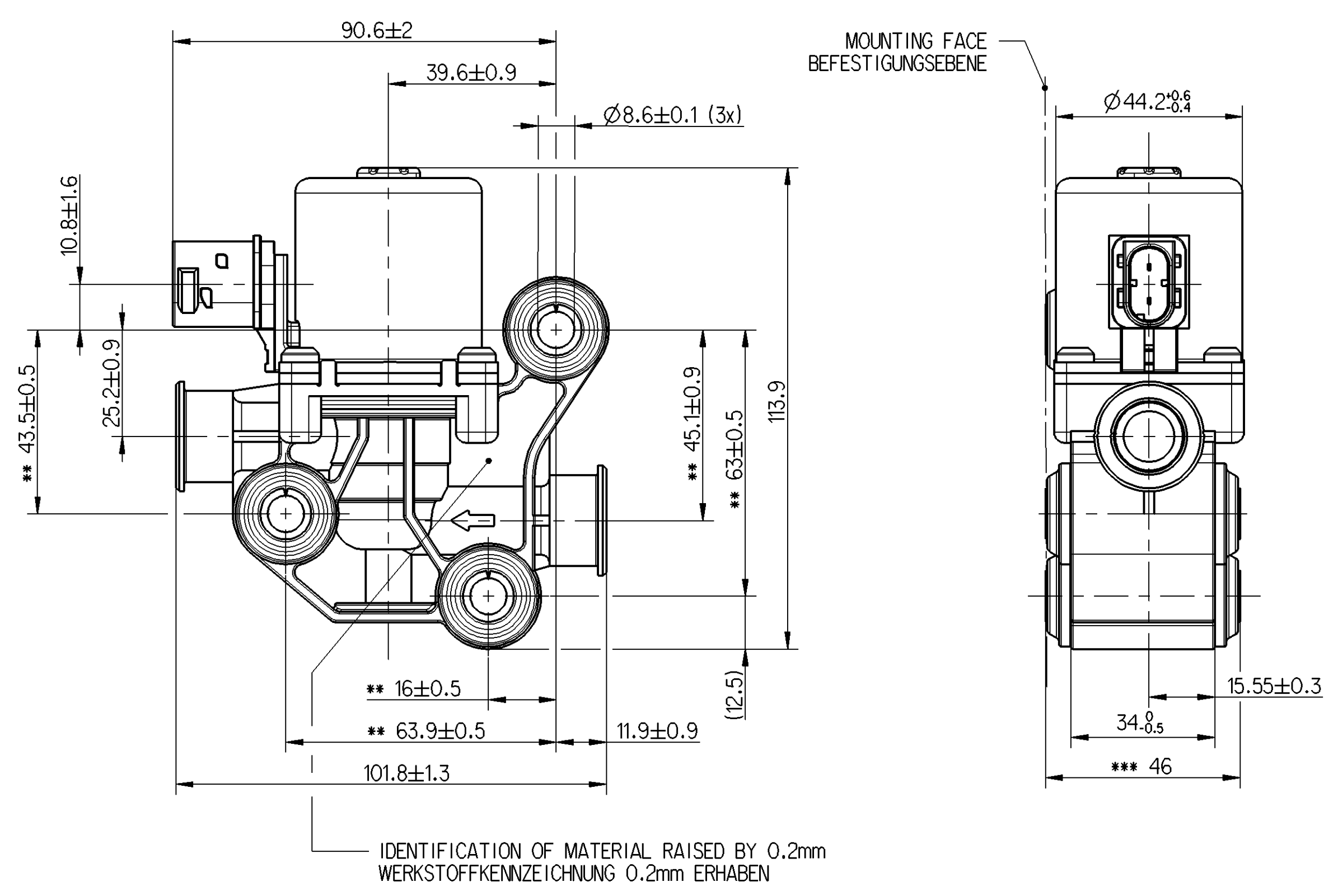


Toute communication ou reproduction de ce document, toute exploitation ou communication de son contenu sont interdites, sauf autorisation écrite de la Direction des Ingénieries. Toute réimpression ou utilisation non autorisée sans la permission écrite de la Direction des Ingénieries est formellement interdite.   
 Nachdruck, Vervielfältigung und Verbreitung, auch auszugsweise, ist ohne schriftliche Genehmigung der WABCO.   
 This document is the property of WABCO. All rights reserved. No part of this document may be reproduced or transmitted in any form or by any means electronic or mechanical, including photocopying and recording, or by any information storage or retrieval system, without permission in writing from WABCO.   
 Non è permesso copiare o riprodurre questo documento, né utilizzare il contenuto in modo non autorizzato senza permesso scritto dalla Direzione Ing.   
 This document is the property of WABCO. All rights reserved. No part of this document may be reproduced or transmitted in any form or by any means electronic or mechanical, including photocopying and recording, or by any information storage or retrieval system, without permission in writing from WABCO.



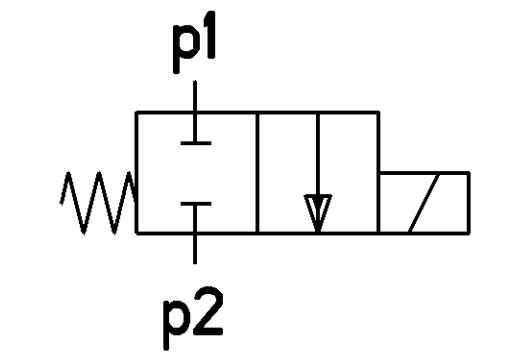
- 1 INLET ZUFLUSS
  - 2 OUTLET ABFLUSS
  - 6 ELECTRIC CONNECTOR ELEKTRISCHER ANSCHLUSS
- WATER CONNECTION ACCORDING TO: VOSS AUS/ SV246 NG12 KU  
 WASSERANSCHLÜSSE GEMÄSS : EXTENDED TOLERANCE OF Ø16
- : TYCO HDSCS, 3-POLE (PIN 2 NOT EXISTING), CODING A,  
 : OUTLINE ACC. TO 858 000 853 4 (TYCO C-114-18743-1, REV. D)

TERMINAL PLATING: TIN

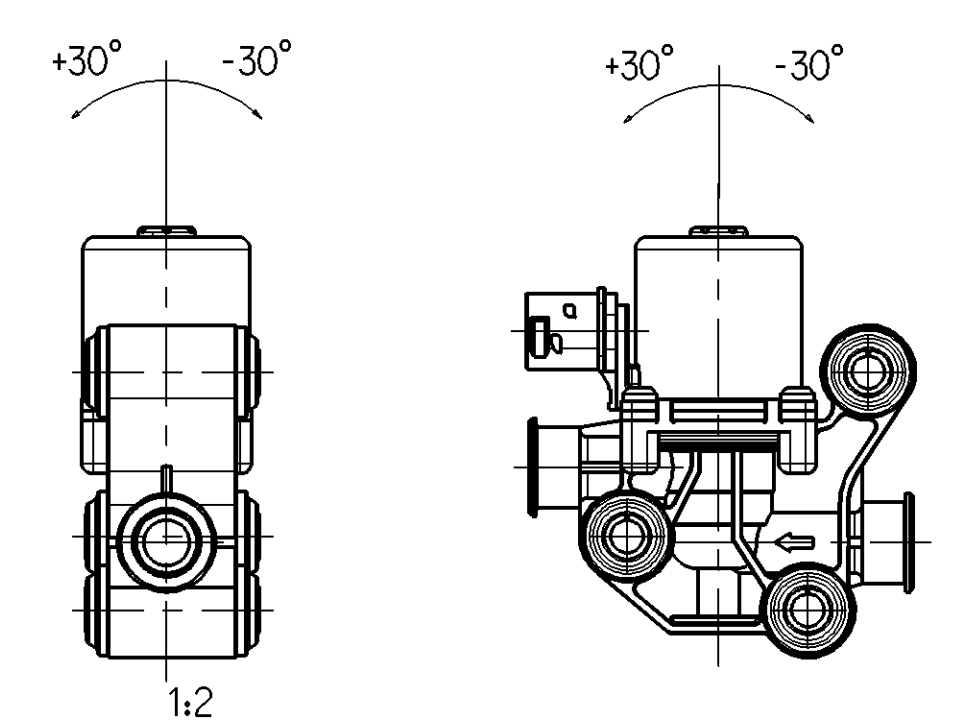
PIN	OPTIONAL
1	+ -
3	- +

NOMINAL VOLTAGE: NENNSPANNUNG: 24V DC  
 PERMISSIBLE OPERATING VOLTAGE: ZULÄSSIGE BETRIEBSPANNUNG: 22...32V DC  
 NOMINAL CURRENT AT 24V AND 20°C: NENNSTROM BEI 24V UND 20°C: 0.75 A  
 WORKING MEDIUM: ANTI-FREEZE-WATER MIXTURE G48, OPTIONAL G12  
 BETRIEBSMEDIUM: FROSTSCHUTZ-WASSER-GEMISCH G48, WAHLWEISE G12 } MAX. 1:1  
 THERMAL RANGE OF APPLICATION: THERMISCHER ANWENDUNGSBEREICH: -40°C...+105°C  
 COOLANT TEMPERATURE: KUEHLWASSTERTEMPERATUR: -40°C...+125°C  
 DUTY CYCLE: EINSCHALTDAUER: 100% ED  
 OPERATING PRESSURE (p1): BETRIEBSDRUCK (p1): 0..2.5 bar  
 MAX. DIFFERENTIAL PRESSURE (p1-p2): MAX. DIFFERENZDRUCK (p1-p2): 0..1.6 bar  
 FLOW RATE: DURCHFUSS: 350l/h AT (p1-p2) = 75 mbar  
 DEGREE OF PROTECTION: SCHUTZART: IP 6K9K DIN 40050 WHEN INSTALLED IM EINGEBAUTEN ZUSTAND  
 TIGHTENING TORQUE OF THE FASTENING SCREW (3x): ANZIEHDREHMOMENT DER BEFESTIGUNGSSCHRAUBE (3x): M ≤ 20 Nm  
 WABCO-20-JED-369, PART NUMBER, NO. PRI, NOMINAL CURRENT, NOMINAL VOLTAGE AND MANUFACTURING DATE  
 WABCO-20-JED-369, TEILENUMMER, PRI-NR., NENNSTROM, NENNSPANNUNG UND HERSTELLDATUM  
 \*\* MEASURED ON INDIVIDUAL COMPONENT GEMESSEN AM EINZELTEIL  
 \*\*\* INSTALLED CONDITION EINGEBAUTER ZUSTAND

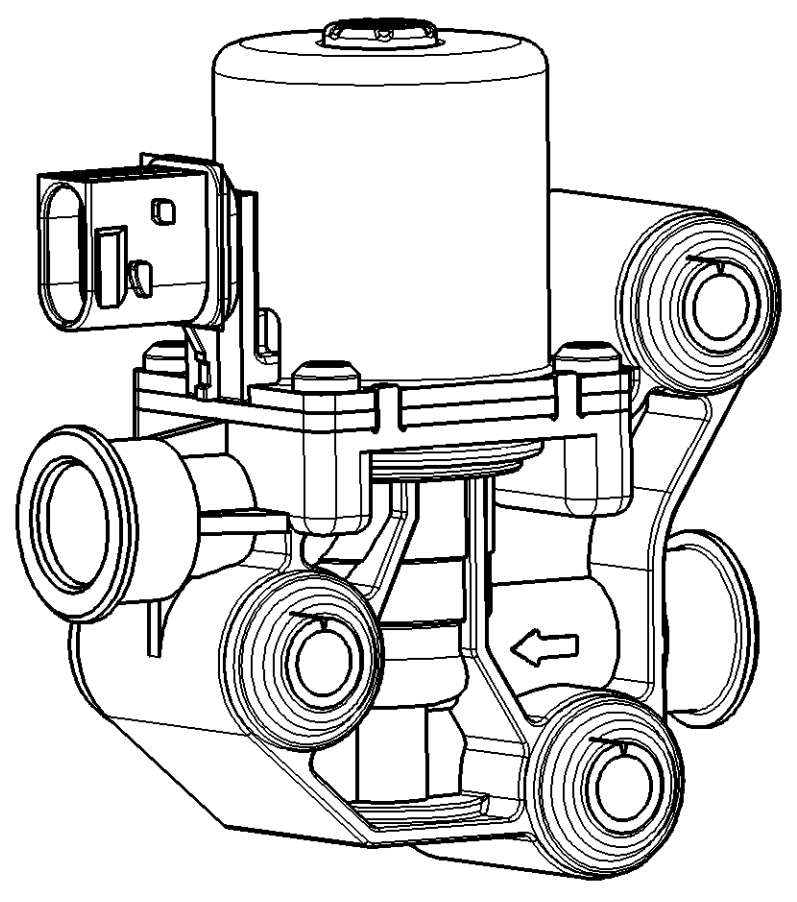
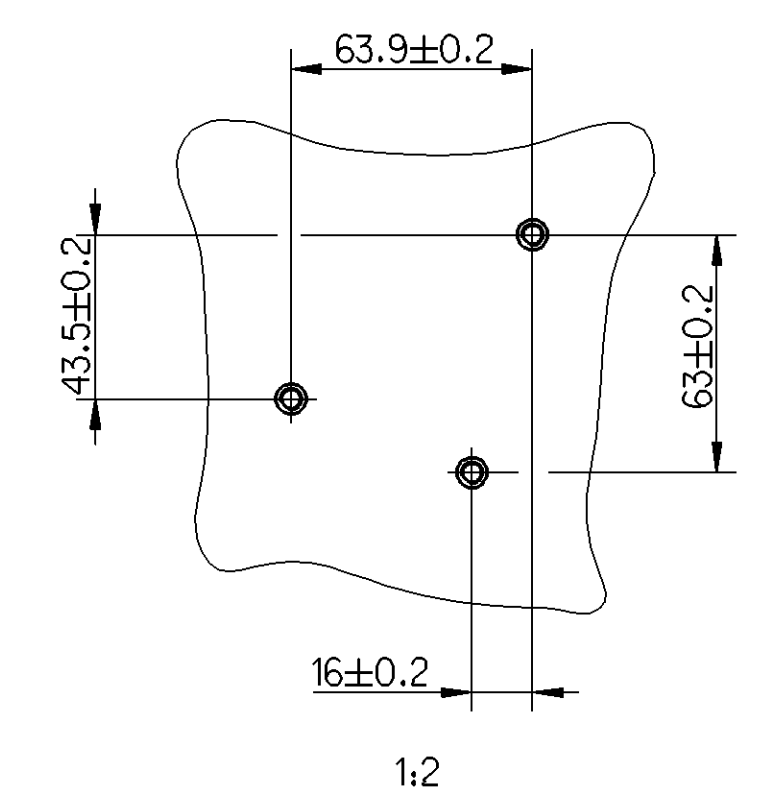
FUNCTION SCHEME/ FUNKTIONSSCHEMA



INSTALLATION POSITION EINBAULAGE



CONNECTING HOLE PATTERN ANSCHLUSSLOCHBILD



General Specification: JED-334-0		Copyright WABCO®		<b>WABCO</b>	
Further Technical Data: 446 091 302 0		Date	Drawn	Signature	
Doc. Code: 035	Sheet: To	2014-02-11	Herzberg	WATERVALVE WASSERVENTIL	
General Tolerances JED-261		Checked	Hoefler		
Range of Nominal Dimensions ( ± mm)		Expert Herzberg			
Class	1) ≤ 50 > 50 ≤ 180 > 180 > 400	Mass	Scale	Material No.	
Fine	X 0.5 1.0 1.5 2.0	0.650 kg	1:1	446 091 302 0	
Medium	1.0 2.0 3.0 4.0	Size	CAD System	Doc. Code	Language
Coarse	2.0 3.5 5.0 6.5	A 1	Pro/E	005	DE
Tapped Holes acc.:		Ech-No.		Revision	Techn. Resp.
1) Tolerance Class Applied Crossmarked		163695		1x C	6570_EM
		100mm		Date of first issue: 2006-10-15	
				Replacement for	