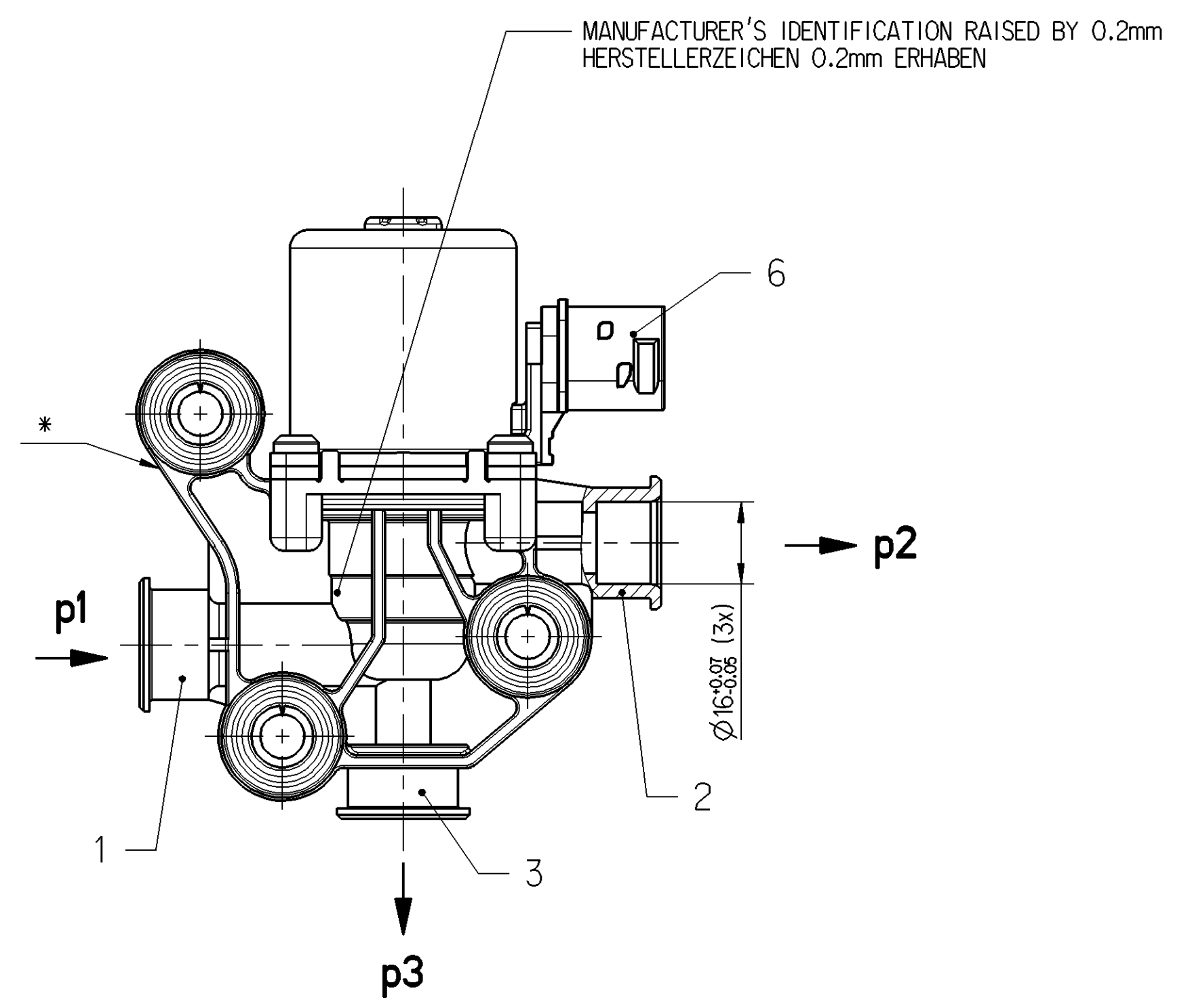
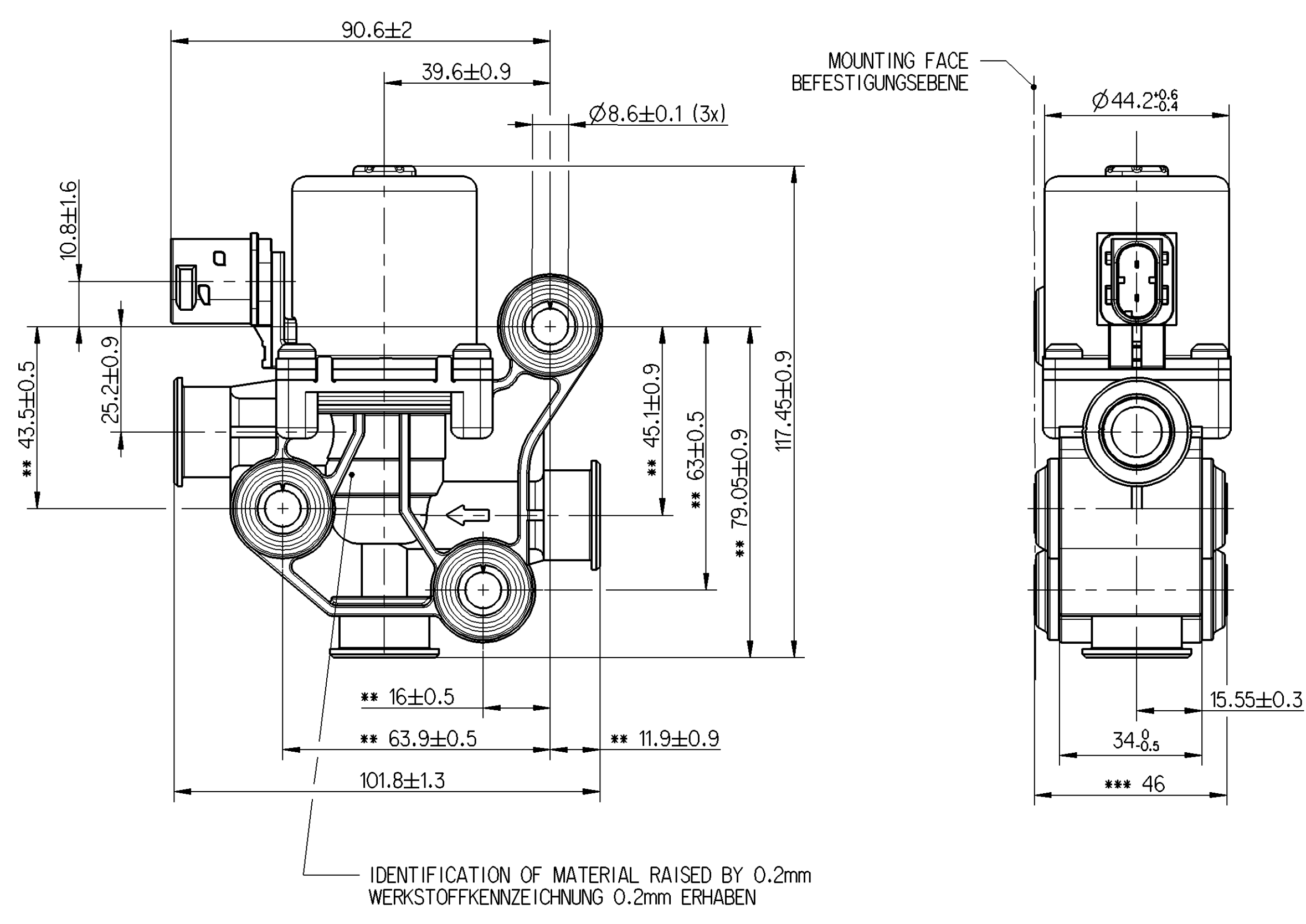


Non è permesso copiare o riprodurre questo documento, né utilizzare i contenuti o i dati contenuti in esso, senza permesso scritto dalla WABCO. È vietata espressamente la ristampa, la traduzione, la distribuzione, la comunicazione o l'uso non autorizzato di questo documento. Toute réimpression ou reproduction de ce document, toute exploitation ou communication de son contenu sans autorisation écrite de la WABCO est formellement interdite. Toute utilisation non autorisée de ce document est formellement interdite. All rights reserved. No part of this document may be reproduced, stored in a retrieval system, or transmitted, in any form or by any means, without the prior written permission of WABCO.



- 1 INLET ZUFLUSS
 - 2 OUTLET ABFLUSS
 - 3 BYPASS BYPASS
 - 6 ELECTRIC CONNECTOR : TYCO HDSCS, 3-POLE (PIN 2 NOT EXISTING), CODING A, ELEKTRISCHER ANSCHLUSS : OUTLINE ACC. TO 858 000 853 4 (TYCO C-114-18743-1, REV. D)
- WATER CONNECTION ACCORDING TO: VOSS AUS/ SV246 NG12 KU
WASSERANSCHLÜSSE GEMÄSS : EXTENDED TOLERANCE OF Ø16

TERMINAL PLATING: TIN

| PIN | OPTIONAL |
|-----|----------|
| 1 | + - |
| 3 | - + |

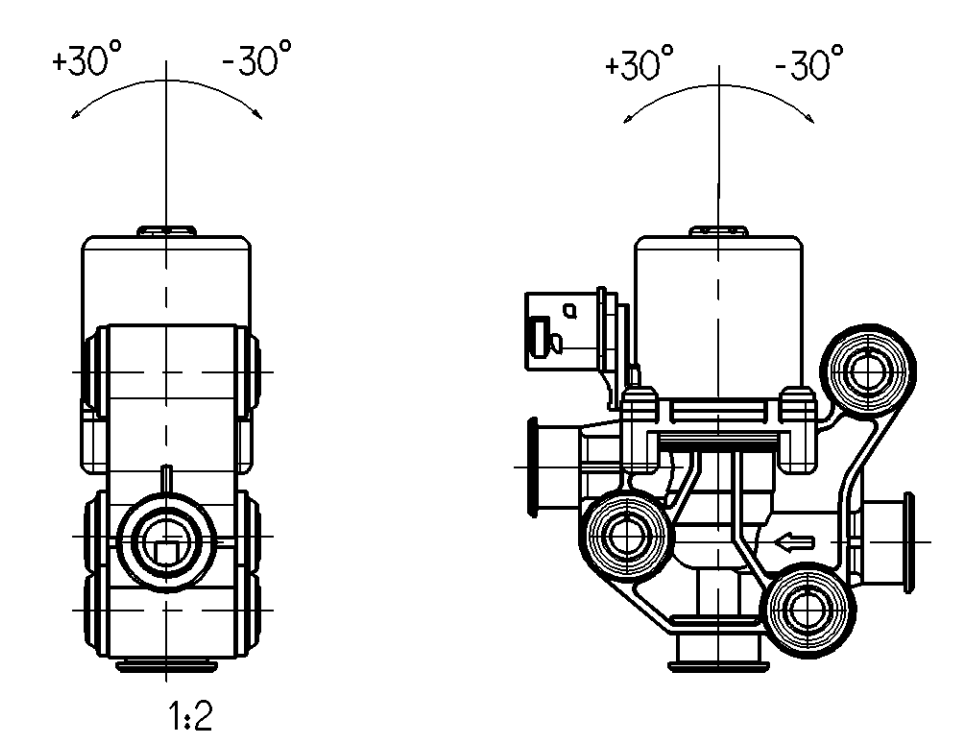
NOMINAL VOLTAGE: NENNSPANNUNG: 24V DC
 PERMISSIBLE OPERATING VOLTAGE: ZULÄSSIGE BETRIEBSpannung: 22...32V DC
 NOMINAL CURRENT AT 24V AND 20°C: NENNSTROM BEI 24V UND 20°C: 0.75 A
 WORKING MEDIUM : ANTI-FREEZE-WATER MIXTURE G48, OPTIONAL G12
 BETRIEBSMEDIUM : FROSTSCHUTZ-WASSER-GEMISCH G48, WAHLWEISE G12 } MAX. 1:1
 THERMAL RANGE OF APPLICATION: THERMISCHER ANWENDUNGSBEREICH: -40°C...+105°C
 COOLANT TEMPERATURE: KUEHLWASSTERTEMPERATUR: -40°C...+125°C
 DUTY CYCLE: EINSCHALTDAUER: 100% ED
 OPERATING PRESSURE (p1): BETRIEBSDRUCK (p1): 0..2.5 bar
 FLOW RATE: DURCHFLUSS: 350l/h AT (p1-p2) = 75 mbar
 FOR (p1-p3) = 85 mbar
 MAX. FLOW FOR SWITCHING BACK; MAX. DURCHFLUSS ZUM UMSCHALTEN: FROM p1-p2 TO p1-p3
 400 l/h
 DEGREE OF PROTECTION: SCHUTZART: IP 6K9K DIN 40050 WHEN INSTALLED IM EINGEBAUTEN ZUSTAND

TIGHTENING TORQUE OF THE FASTENING SCREW (3x); ANZIEHDREHMOMENT DER BEFESTIGUNGSSCHRAUBE (3x): M ≤ 20 Nm

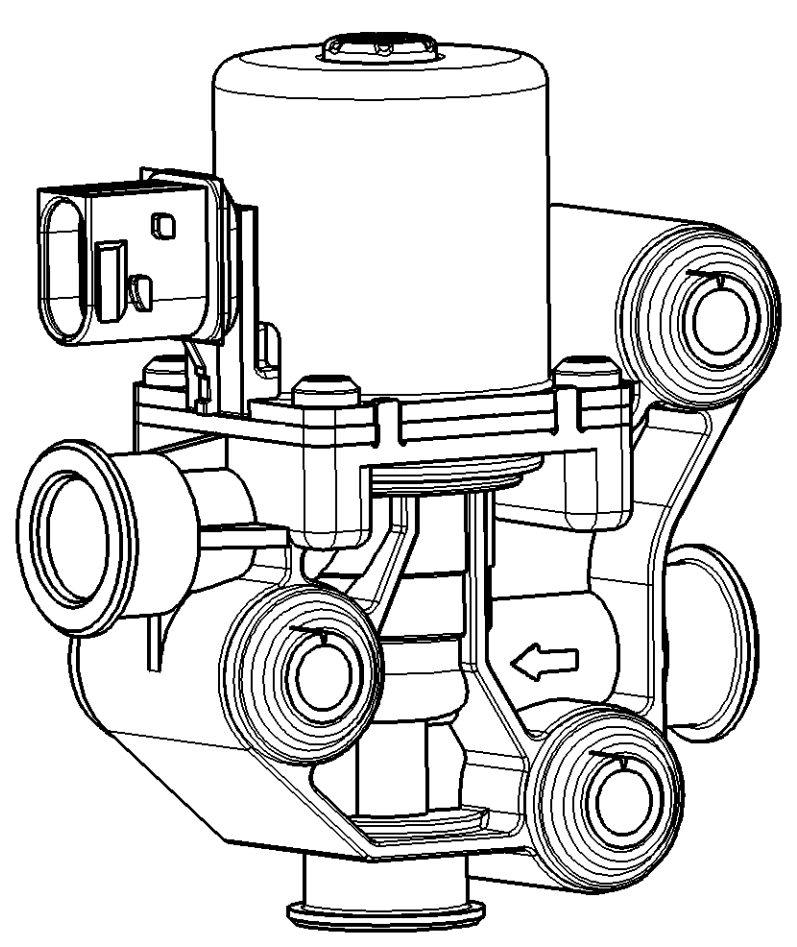
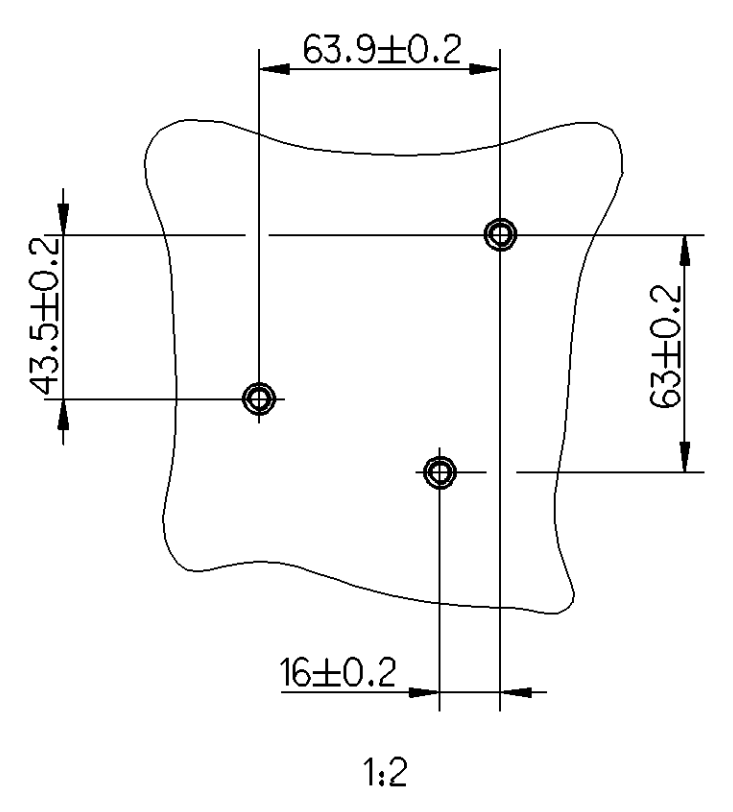
* WABCO-20-JED-369, PART NUMBER, NO. PRI., NOMINAL CURRENT, NOMINAL VOLTAGE AND MANUFACTURING DATE
 WABCO-20-JED-369, TEILENUMMER, PRI-NR., NENNSTROM, NENNSPANNUNG UND HERSTELLDATUM

** MEASURED ON INDIVIDUAL COMPONENT GEMESSEN AM EINZELTEIL
 *** INSTALLED CONDITION EINGEBAUTER ZUSTAND

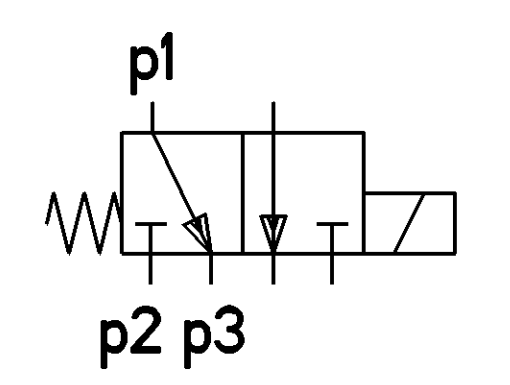
INSTALLATION POSITION EINBAULAGE



CONNECTING HOLE PATTERN ANSCHLUSSLOCHBILD



FUNCTION SCHEME/ FUNKTIONSSCHEMA



| | | | | | |
|--|-----------|------------------|------------|---------------------------------|----------|
| General Specification: JED-334-O | | Copyright WABCO® | | WABCO | |
| Further Technical Data: 446 091 308 0 | | Date | Drawn | Date of first issue: 2009-02-24 | |
| Doc. Code: 035 | Sheet: To | 2014-02-11 | Herzberg | Doc.Code | Language |
| General Tolerances JED-261 | | 2014-02-11 | Hoefler | 005 | ML |
| Range of Nominal Dimensions (± mm) | | Expert Herzberg | | 1/1 | |
| Class | 1) | ≤ 50 | > 50 ≤ 180 | ≤ 180 ≤ 400 | > 400 |
| Fine | X | 0.5 | 1.0 | 1.5 | 2.0 |
| Medium | | 1.0 | 2.0 | 3.0 | 4.0 |
| Coarse | | 2.0 | 3.5 | 5.0 | 6.5 |
| Tapped Holes acc.: | | A 1 | | Pro/E | |
| 1) Tolerance Class Applied Crossmarked | | Mass | Scale | Material No. | |
| | | 0.650 kg | 1:1 | 446 091 308 0 | |
| | | Size | CAD System | Date of first issue: 2009-02-24 | |
| | | | | Doc.Code Language Sheet | |
| | | | | 005 ML 1/1 | |
| | | | | Replacement for | |
| | | | | 163695 1x C 6570_EM | |
| | | | | 100mm | |