

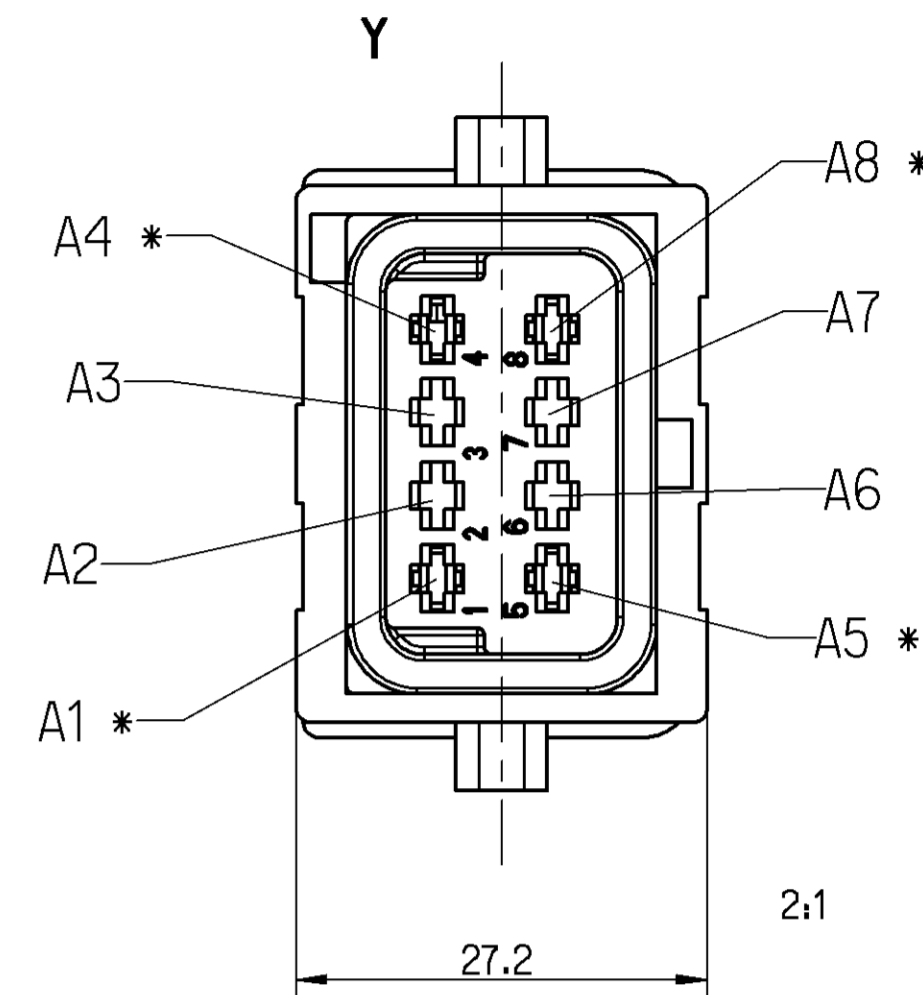
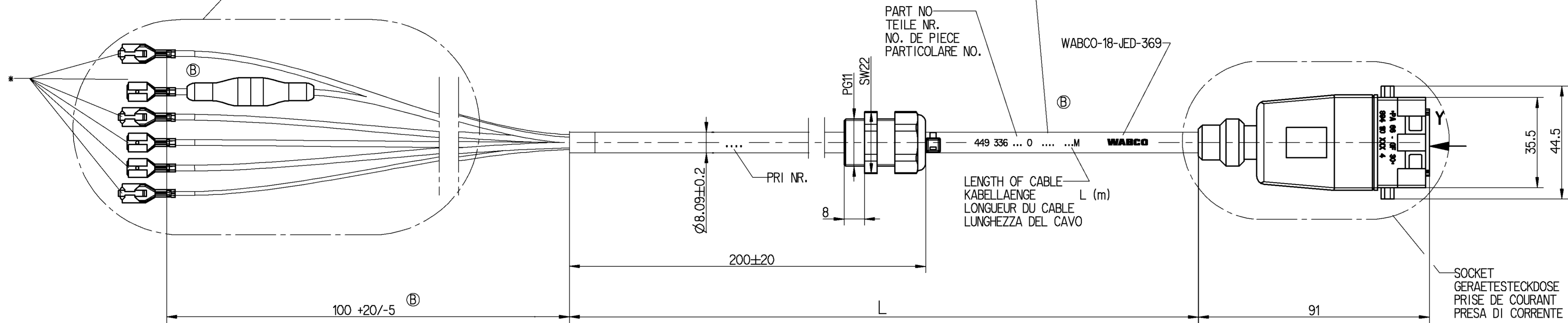
CABLE SEAL AGAINST INGRESS WATER REQUIRED  
 KABELDICHTUNG GEGEN EINDRINGEN VON WASSER ERFORDERLICH  
 PRESSE-ETOUPE DE CABLE NECESSAIRE POUR PROTECTION CONTRE L'EAU  
 NECESSARIO SERRACAVO PER PROTEZIONE DALL'INGRESSO DI ACQUA

DATE OF MANUFACTURE : JED-226  
 HERSTELLDATUM : JED-226  
 DATE DE FABRICATION : JED-226  
 DATA DI FABBRICAZIONE : JED-226

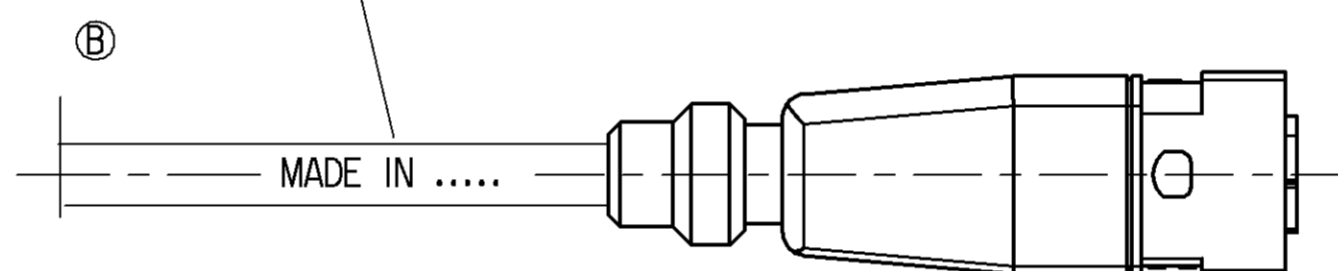
PART NO.  
 TEILE NR.  
 NO. DE PIECE  
 PARTICOLARE NO.

WABCO-18-JED-369

449 336 ... 0 ... M  
 WABCO  
 LENGTH OF CABLE  
 KABELLAENGE  
 LONGUEUR DU CABLE  
 LUNGHEZZA DEL CAVO



IDENTIFICATION OF COUNTRY OF ORIGIN  
 KENNZEICHNUNG WARENURSPRUNGSLAND  
 IDENTIFICATION DA PAYS D'ORIGINE  
 IDENTIFICAZIONE DEL PAESE D'ORIGINE



THERMAL RANGE OF APPLICATION :  
 THERMISCHER ANWENDUNGSBEREICH: -40°C....+80°C  
 GAMME D'APPLICATION THERMIQUE:  
 CAMPO TERMICO D'APPLICAZIONE :

RESISTANT TO : AIR, WATER, MINERAL OIL, PETROL, DIESEL OIL, SALT SPRAY  
 BESTAENDIG GEGEN: LUFT, WASSER, MINERALOEL, BENZIN, DIESEL OEL, SALZSPRUEHNEBEL  
 RESISTANT A : AIR, EAU, HUILE MINERALE, ESSENCE, GASOIL, BROUILLARD SALIN  
 RESISTENTE A : ARIA, AQUA, OLIO MINERALE, BENZINA, GASOLIO, NEBBIA SALINA

6-CORE CABLE PUR  
 LEITUNG 6-ADRIG 1 x 0.5mm<sup>2</sup>  
 CABLE A 6 CONDUCTEURS 5 x 1.5mm<sup>2</sup>  
 CAVO A 6 CODUTORI

SURFACE PROTECTION :  
 OBERFLAECHENSCHUTZ : \* Sn  
 PROTECTION DE SURFACE:  
 PROTEZIONE SUPERFICI :

DEGREE OF PROTECTION (IN CONNECTION WITH PLUG) :  
 SCHUTZART (IN VERBINDUNG MIT STECKER) : IP 6K 9K / IP 67  
 DEGRE DE PROTECTION (DANS CONNECTION AVEC FICHE):  
 GRADO DI PROTEZIONE (IN RELAZIONE CON SPINA) :

CHAMBER IN: KAMMER IN: CHAMBRE EN: CAMERA IN:	CABLE KABEL CABLE CAVO	WIRE COLOUR ADER FARBE FIL COLEURE FILO COLORE
	CROSS SECTION QUERSCHNITT SECTION DE TRANSVERSALE SEZIONE TRASVERSAL	
1	1,5 mm <sup>2</sup>	BLUE BLAU BLEU BLU
2	-	-
3	-	-
4	1,5 mm <sup>2</sup>	YELLOW/GREEN GELB/GRUEN JAUNE/VERT GIALLO/VERDE
5	1,5 mm <sup>2</sup>	BROWN BRAUN BRUN BRUNO
	1,5 mm <sup>2</sup>	BROWN/BLACK BRAUN/SCHWARZ BRUN/NOIR BRUNO/NERO
6	-	-
7	-	-
8	0,5 mm <sup>2</sup>	WHITE WEISS BLANC BIANCO
	0,5 mm <sup>2</sup>	YELLOW GELB JAUNE GIALLO

CODE OF LENGTH LAENGENCODIERUNG CODE DE LA LONGUEUR CODICE DEL LUNGHEZZA	L[m] 449 336 □ □ □ 0
PART NO. TEILE NR. NO DE PIECE CODICE	449 336 □ □ □ 0
EXAMPLE BEISPIEL EXEMPLE ESEMPIO	L = 18_m 449 336 180 0
MIN/MAX LENGTH MIN/MAX LAENGE MIN/MAX LONGUEUR MIN/MAX LUNGHEZZA	L <sub>min</sub> = 0.1m L <sub>max</sub> = 20m
TOLERANCES TOLERANZEN TOLERANCES TOLERANZA	L ≤ 10m ±0.050m L > 10m ±0.075m

General Specification: JED-334-0		Copyright WABCO		<b>WABCO</b>	
Further Technical Data		Date		Signature	
Doc. Code	Sheet	2003-09-11		NIEBER	
General Tolerances JED-261		2003-09-11		GRUENDKER	
Range of Nominal Dimensions ( ± mm)		Expert		Nieber	
Class	1)	> 50	> 180	> 400	±3°
Fine	0,5	1,0	1,5	2,0	
Medium	X	1,0	2,0	3,0	4,0
Coarse		2,0	3,5	5,0	6,5
Mass	kg	1:1 (2:1)		Product Identification No.	
Size	TR1	449 336 000 0		Doc. Code Language Sheet	
A 1	650	Function Code CAD System Prod. Type		653 en 1/1	
1) Tolerance Class Applied Crossmarked		Pro/E 1 1 X		Replacement for	

Non è permesso copiare o riprodurre questo documento, in qualsiasi forma o per qualsiasi mezzo, senza il permesso scritto della WABCO. È vietata espressamente la ristampa o l'uso non autorizzato di questo documento. Toute réimpression ou reproduction de ce document, sans l'autorisation écrite de la WABCO, est formellement interdite. Toute réimpression ou utilisation non autorisée sans la permission écrite de la WABCO est formellement interdite. All rights reserved. No part of this document may be reproduced, stored in a retrieval system, or transmitted, in any form or by any means, electronic, mechanical, photocopying, recording, or otherwise, without the prior written permission of WABCO.