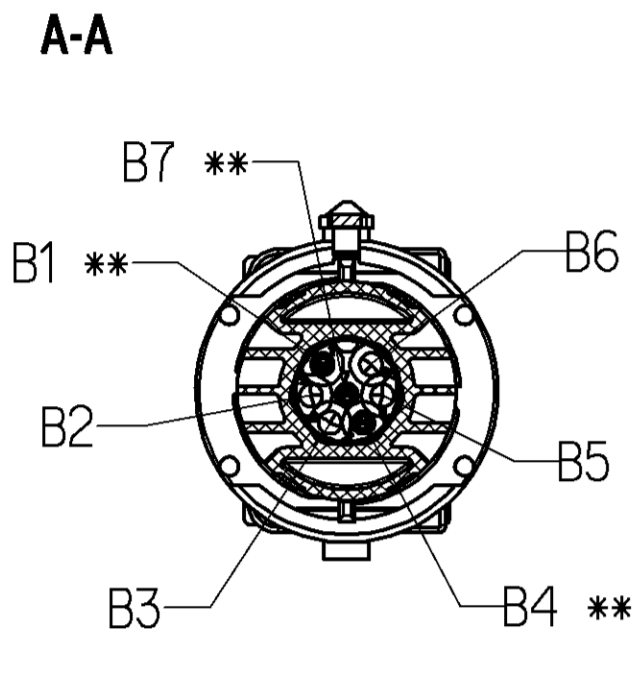
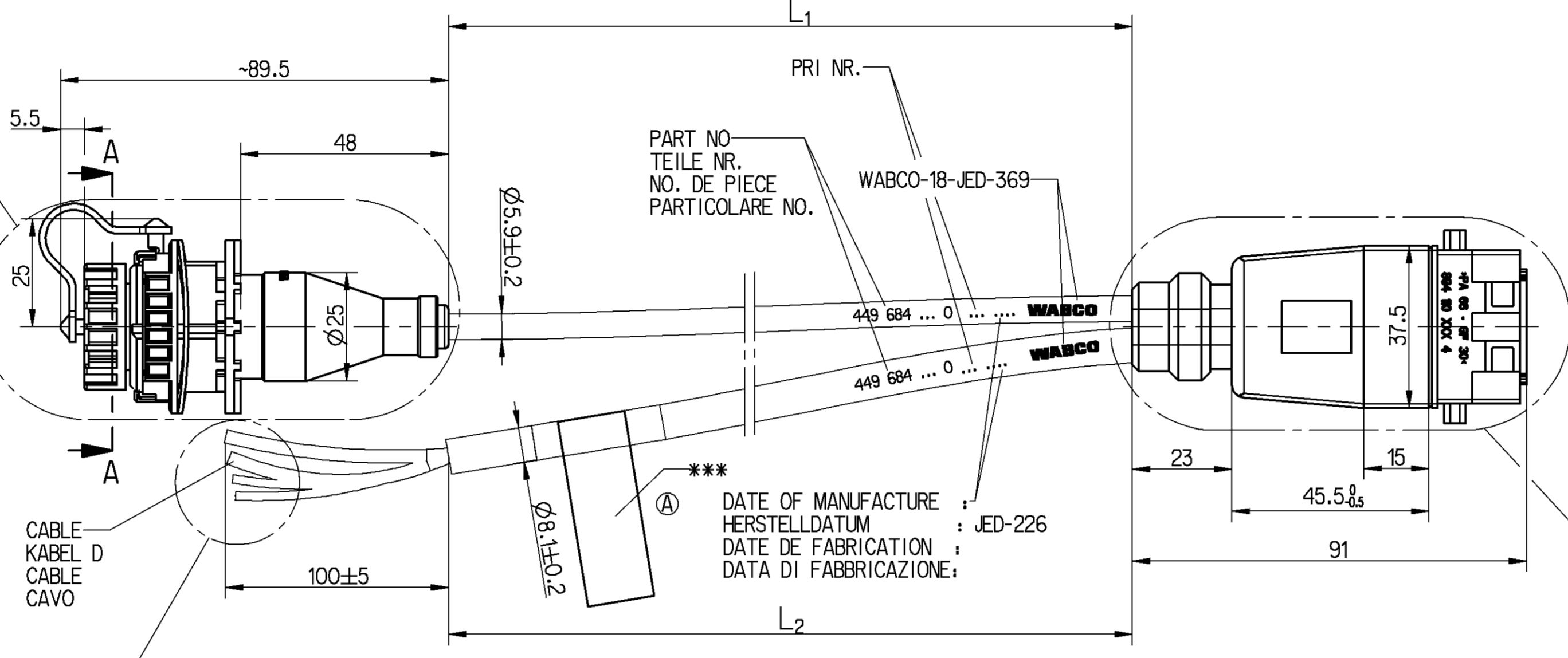


*** LABEL WITH PIN ASSIGNMENT
 ETIKETT MIT ANSCHLUSSBELEGUNG
 ETIQUETTE AVEC PRÉGRUPPEMENT DES CABLES
 TARGHETTA CON RAGGRUPPAMENTO DEI CAVI

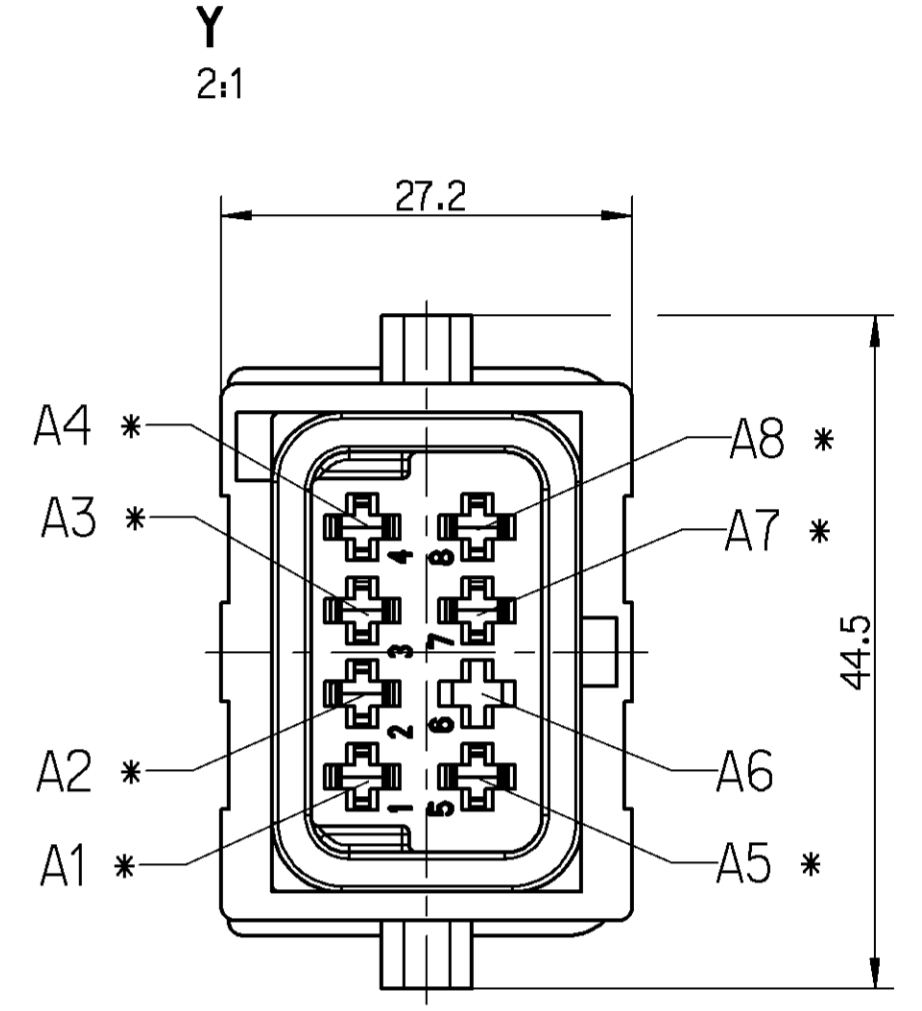


SOCKET
 GERÄTESTECKDOSE
 PRISE DE COURANT
 PRESA DI CORRENTE



DATE OF MANUFACTURE : JED-226
 HERSTELLDATUM : JED-226
 DATE DE FABRICATION :
 DATA DI FABBRICAZIONE :

CABLE SEAL AGAINST INGRESS WATER REQUIRED
 KABELDICHTUNG GEGEN EINDRINGEN VON WASSER ERFORDERLICH
 PRESSE-ÉTOUPE DE CABLE NECESSAIRE POUR PROTECTION CONTRE L'EAU
 È NECESSARIO SERRACAVO PER PROTEZIONE DALL'INGRESSO DI ACQUA



THERMAL RANGE OF APPLICATION :
 THERMISCHER ANWENDUNGSBEREICH : -40°C....+80°C
 GAMME D'APPLICATION THERMIQUE :
 CAMPO TERMICO D'APPLICAZIONE :

RESISTANT TO : AIR,WATER,MINERAL OIL,PETROL,DIESELOIL,SALTSPRAY
 BESTÄNDIG GEGEN: LUFT,WASSER,MINERALÖL,BENZIN,DIESELÖL,SALZSPRUEHNEBEL
 RESISTANT A : AIR,EAU,HUILE MINERALE,ESSENCE,GASOIL,BROUILLARD SALIN
 RESISTENTE A : ARIA,AQUA,OLIO MINERALE,BENZINA,GASOLIO,NEBBIA SALINA

CABLE LEITUNG CABLE CAVO
 B: PUR 3 x 0.5mm²
 D: PUR 2 x 0.5mm² / 2 x 2.5mm²

SURFACE PROTECTION :
 OBERFLÄCHENSCHUTZ : * Sn
 PROTECTION DE SURFACE : ** Ag
 PROTEZIONE SUPERFICI :

DEGREE OF PROTECTION (IN CONNECTION WITH PLUG) :
 SCHUTZART (IN VERBINDUNG MIT STECKER) : IP 6K 9K / IP 67
 DEGRE DE PROTECTION (DANS CONNECTION AVEC FICHE):
 GRADO DI PROTEZIONE (IN RELAZIONE CON SPINA) :

CODE OF LENGTH LAENGCODIERUNG : ORDER NUMBER BESTELLNUMMER : 449 684 000 0
 CODE DE LA LONGUEUR CODE DE LA LONGUEUR : 449 684 000 0
 CODICE DEL LUNGEZZA : NUMERO DELL'ORDINE : 449 684 153 0

L ₁ [m]	L ₂ [m]
0.25	001 002 003 004 005 006 007 008 009 010 011 012 013 014 015 016 017 018 019
0.40	021 022 023 024 025 026 027 028 029 030 031 032 033 034 035 036 037 038 039
1.00	041 042 043 044 045 046 047 048 049 050 051 052 053 054 055 056 057 058 059
1.35	061 062 063 064 065 066 067 068 069 070 071 072 073 074 075 076 077 078 079
1.50	081 082 083 084 085 086 087 088 089 090 091 092 093 094 095 096 097 098 099
2.00	101 102 103 104 105 106 107 108 109 110 111 112 113 114 115 116 117 118 119
2.50	121 122 123 124 125 126 127 128 129 130 131 132 133 134 135 136 137 138 139
3.00	141 142 143 144 145 146 147 148 149 150 151 152 153 154 155 156 157 158 159
3.50	161 162 163 164 165 166 167 168 169 170 171 172 173 174 175 176 177 178 179
4.00	181 182 183 184 185 186 187 188 189 190 191 192 193 194 195 196 197 198 199
4.50	201 202 203 204 205 206 207 208 209 210 211 212 213 214 215 216 217 218 219
5.00	221 222 223 224 225 226 227 228 229 230 231 232 233 234 235 236 237 238 239
6.00	241 242 243 244 245 246 247 248 249 250 251 252 253 254 255 256 257 258 259
7.00	261 262 263 264 265 266 267 268 269 270 271 272 273 274 275 276 277 278 279
8.00	281 282 283 284 285 286 287 288 289 290 291 292 293 294 295 296 297 298 299
10.0	301 302 303 304 305 306 307 308 309 310 311 312 313 314 315 316 317 318 319
12.0	321 322 323 324 325 326 327 328 329 330 331 332 333 334 335 336 337 338 339
15.0	341 342 343 344 345 346 347 348 349 350 351 352 353 354 355 356 357 358 359
18.0	361 362 363 364 365 366 367 368 369 370 371 372 373 374 375 376 377 378 379

MIN/MAX LENGTH LAENGE
 MIN/MAX LONGUEUR
 MIN/MAX LUNGEZZA
 $L_{min} = 0.3m$ Ⓐ
 $L_{max} = 18.00m$
 TOLERANCES TOLERANZEN
 TOLERANCI
 TOLERANZA
 $L \le 10m$ +0.100 / -0.050
 $L > 10m$ +0.125 / -0.075

CHAMBER KAMMER A CHAMBRE CAMERA	WIRE COLOUR ADER FARBE FIL COLEURE FILO COLORE	CABLE KABEL CABLE CAVO CROSS SECTION QUERSCHNITT SECTION DE TRANSVERSALE SEZIONE TRASVERSAL	CHAMBER KAMMER B CHAMBRE CAMERA
1	RED ROT ROUGE ROSSO	0.5mm ²	4
2	WHITE WEISS BLANC BIANCO	0.5mm ²	1
3	BROWN BRAUN BRUN BRUNO	0.5mm ²	7
4	BLUE BLAU BLEU BLU	0.5mm ²	— CABLE KABEL CABLE CAVO D
5	RED ROT ROUGE ROSSO	2.5mm ²	— CABLE KABEL CABLE CAVO D
6			
7	BROWN BRAUN BRUN BRUNO	2.5mm ²	— CABLE KABEL CABLE CAVO D
8	GREEN GRUEN VERT VERDE	0.5mm ²	— CABLE KABEL CABLE CAVO D

MINIMUM OF PROTECTION OF INFORMATION OF COMMUNICATION OR COMMUNICATION OF DATA. THE INFORMATION IS NOT TO BE REPRODUCED OR TRANSMITTED IN ANY FORM OR BY ANY MEANS, ELECTRONIC OR MECHANICAL, INCLUDING PHOTOCOPYING, RECORDING, OR BY ANY INFORMATION STORAGE AND RETRIEVAL SYSTEM. THE INFORMATION IS NOT TO BE REPRODUCED OR TRANSMITTED IN ANY FORM OR BY ANY MEANS, ELECTRONIC OR MECHANICAL, INCLUDING PHOTOCOPYING, RECORDING, OR BY ANY INFORMATION STORAGE AND RETRIEVAL SYSTEM. THE INFORMATION IS NOT TO BE REPRODUCED OR TRANSMITTED IN ANY FORM OR BY ANY MEANS, ELECTRONIC OR MECHANICAL, INCLUDING PHOTOCOPYING, RECORDING, OR BY ANY INFORMATION STORAGE AND RETRIEVAL SYSTEM. THE INFORMATION IS NOT TO BE REPRODUCED OR TRANSMITTED IN ANY FORM OR BY ANY MEANS, ELECTRONIC OR MECHANICAL, INCLUDING PHOTOCOPYING, RECORDING, OR BY ANY INFORMATION STORAGE AND RETRIEVAL SYSTEM. THE INFORMATION IS NOT TO BE REPRODUCED OR TRANSMITTED IN ANY FORM OR BY ANY MEANS, ELECTRONIC OR MECHANICAL, INCLUDING PHOTOCOPYING, RECORDING, OR BY ANY INFORMATION STORAGE AND RETRIEVAL SYSTEM.

Dr. - 44694000_053 ***
 H
 Tel. - 44694000_052 4.1