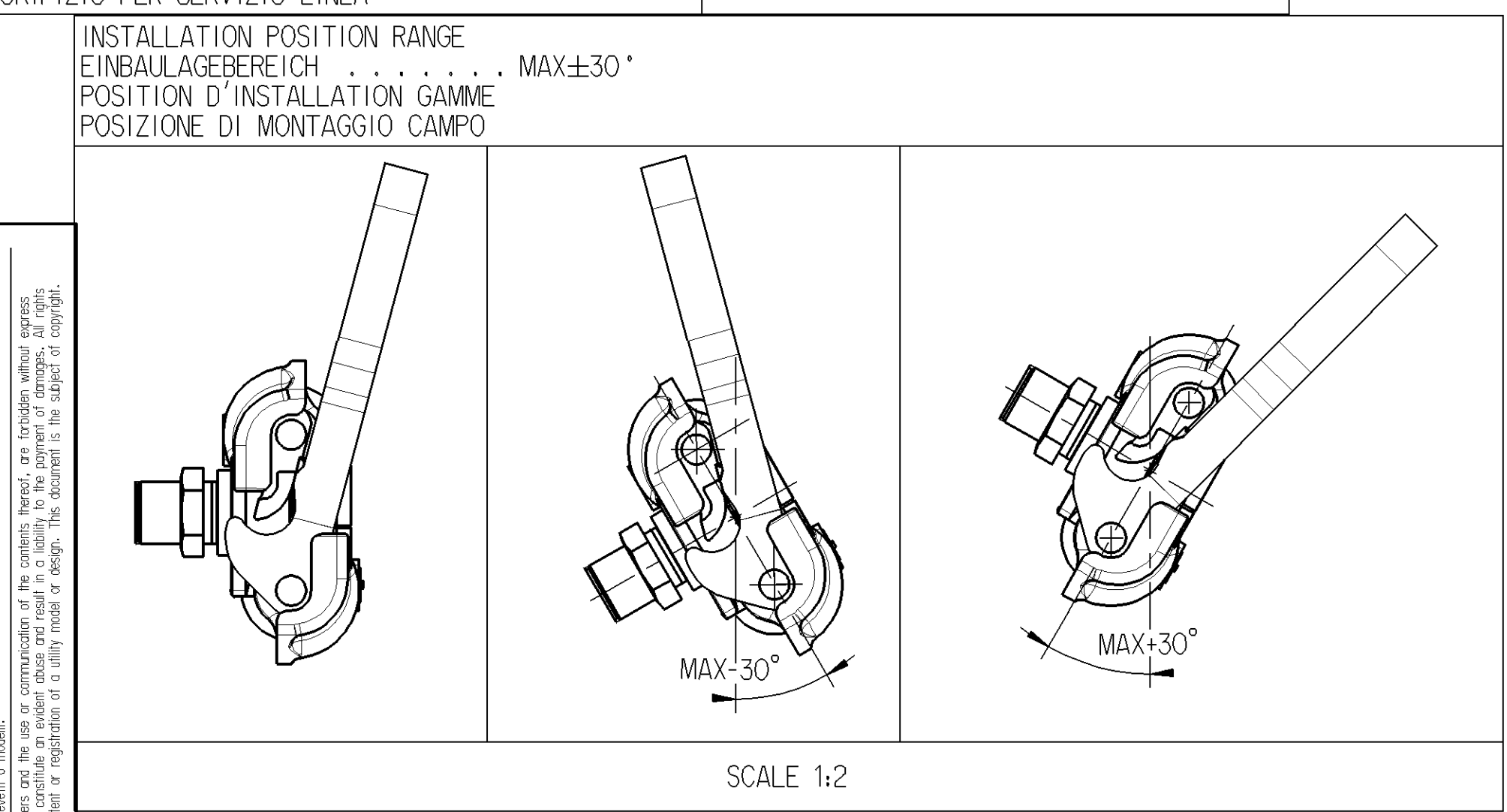
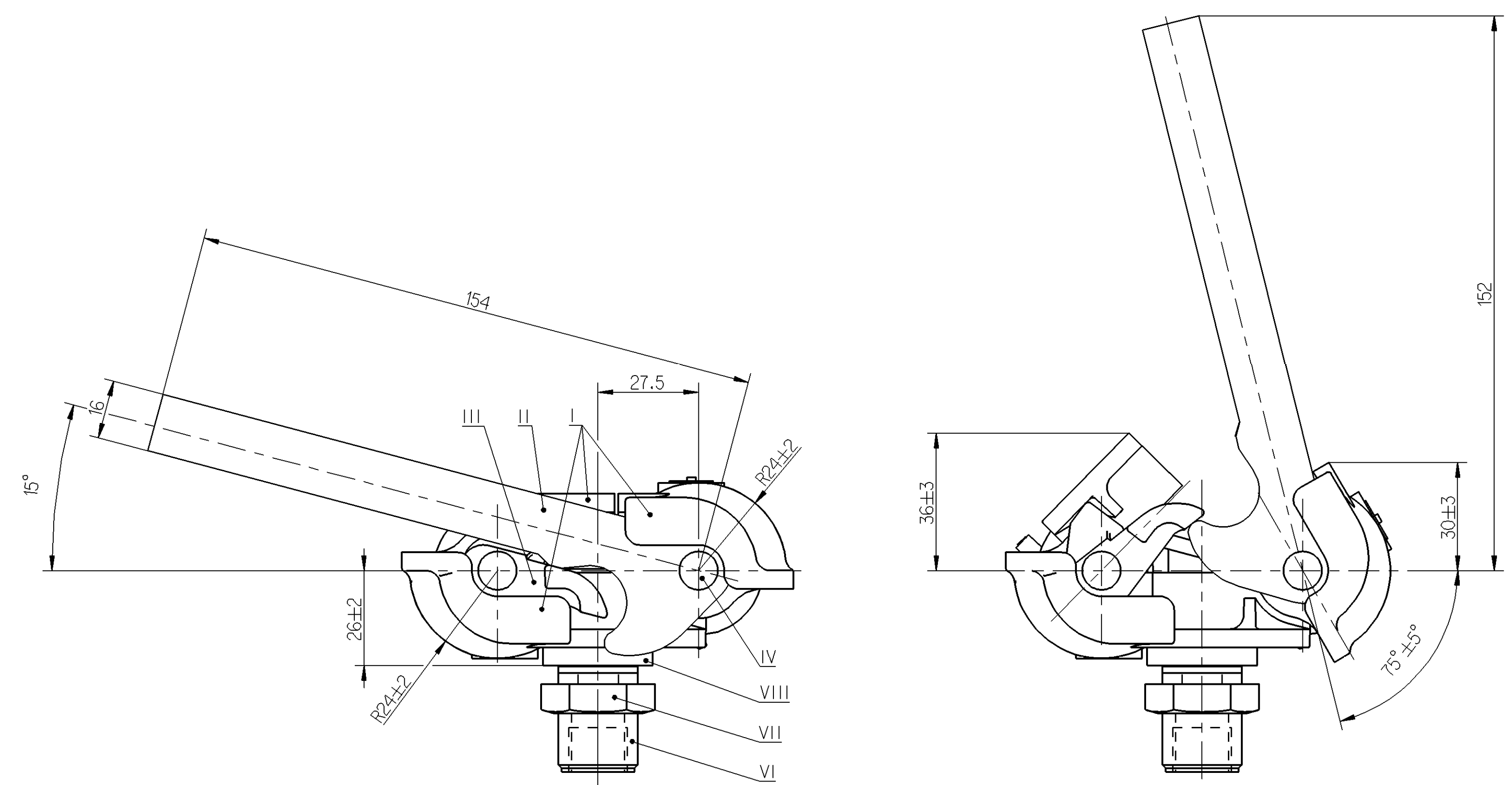


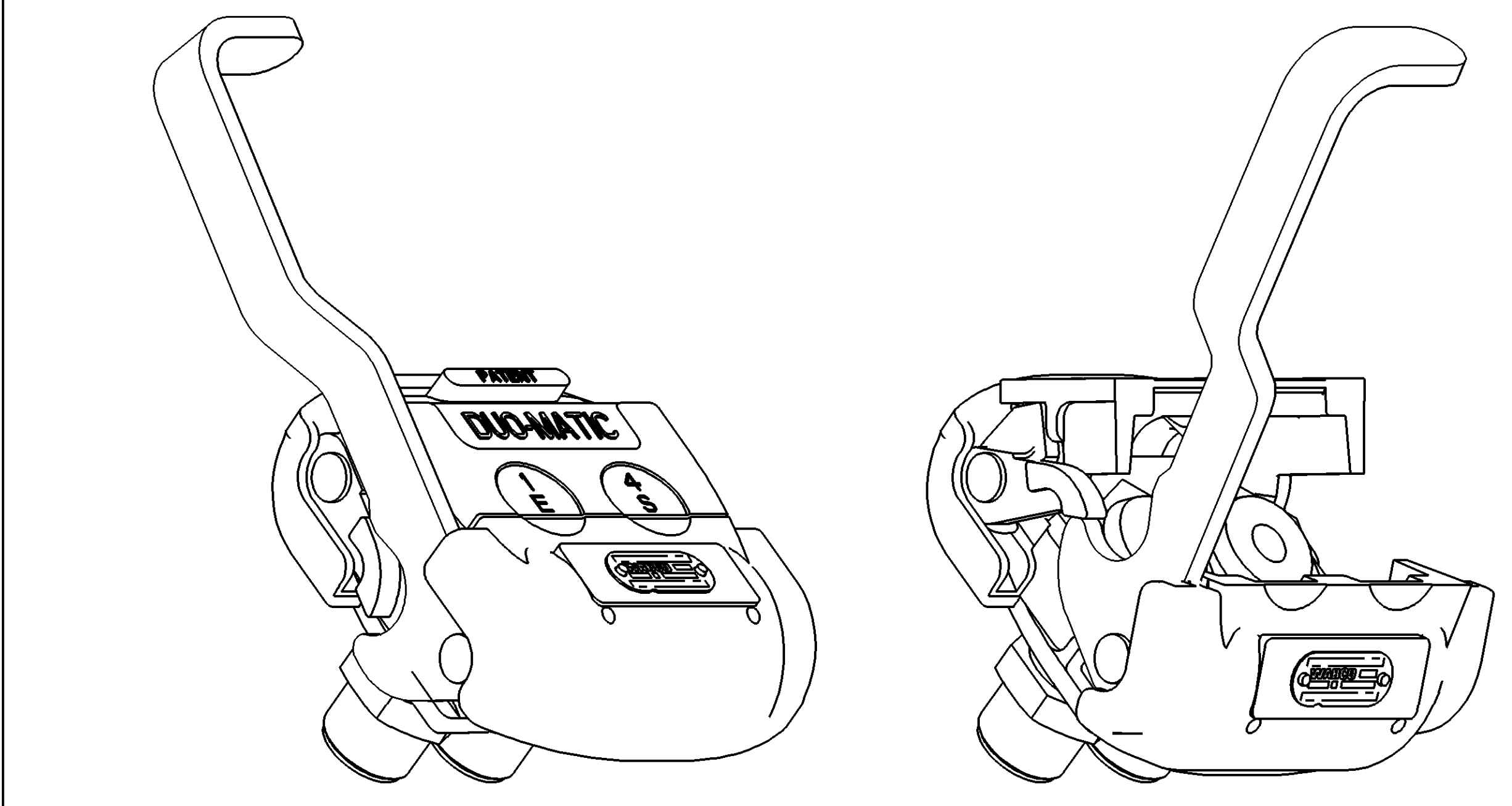
A	WORKING MEDIUM ARBEITSMEDIUM FLUIDE D'UTILISATION FLUIDO DI ESERCIZIO	AIR LUFT (JED-848) AIR ARIA	MATERIAL AND SURFACE PROTECTION
	SHORT TERM RESISTANCE TO HEAT KURZZEITIGE WAERMEBESTAENDIGKEIT RESISTANCE THERMIQUE TEMPORAIRE RESISTENZA TERMICA PER BREVE PERIODO	MAX. 1h AT 110°C	I Al JED-029M1 C JED-259 II Fe JED-060M1 Zn/Fe JED-256-1 III Fe JED-004M C JED-260 IV Fe JED-020-1 Zn/Fe JED-256-1 V Fe JED-050MO --- VI Fe JED-020-1 Zn/Fe JED-256-1 VII Fe 14H Zn JED-378-4 VIII Fe JED-020-1 Zn/Fe JED-256-1
	THERMAL RANGE OF APPLICATION THERMISCHER ANWENDUNGSBEREICH GAMME D'APPLICATION THERMIQUE CAMPO DI APLICAZIONE TERMICA	-40°C...+80°C	
B	WORKING PRESSURE (SUPPLY) BETRIEBSDRUCK (VORRAT) PRESSION DE SERVICE (ALIMENTATION) PRESSIONE DI ESERCIZIO (ALIMENTAZIONE)	10 BAR	
	TORQUE ANZUGSMOMENT COUPLE DE SERRAGE COPPIA DI SERRAGGIO	45±5 Nm	
	TORQUE ANZUGSMOMENT COUPLE DE SERRAGE COPPIA DI SERRAGGIO	max.45 Nm	
C	TORQUE ANZUGSMOMENT COUPLE DE SERRAGE COPPIA DI SERRAGGIO	max.70Nm (EXCEPT SW27)	
	SERVICE CONDITION BETRIEBSART CONDITION DE SERVICE CONDIZIONE DI SERVIZIO	CONTINUOUS SERVICE DAUERBETRIEB SERVICE CONTINU SERVIZIO CONTINUO	
	MAINTENANCE REQUIREMENTS WARTUNGSANFORDERUNGEN ENTRETIEN MANUTENZIONE	NONE KEINE NON NON	
D	PORT FOR EMERGENCY ANSCHLUSS FUER VORRATSLEITUNG ORIFICE POUR LIGNE D'URGENCE ORIFIZIO PER LINEA D'EMERGENZA	1	
	PORT FOR SERVICE LINE ANSCHLUSS FUER BREMSLEITUNG ORIFICE POUR SERVICE LIGNE ORIFIZIO PER SERVIZIO LINEA	4	

I	Al JED-029M1	C JED-259
II	Fe JED-060M1	Zn/Fe JED-256-1
III	Fe JED-004M	C JED-260
IV	Fe JED-020-1	Zn/Fe JED-256-1
V	Fe JED-050MO	---
VI	Fe JED-020-1	Zn/Fe JED-256-1
VII	Fe 14H	Zn JED-378-4
VIII	Fe JED-020-1	Zn/Fe JED-256-1



* WIDTH ACROSS FLATS
 SCHLUESSELWEITE SW27
 SURPLATS
 LARGHEZZA IN CHIAVE

Non è permesso copiare o riprodurre questo documento, né utilizzare il contenuto o i contenuti concesso in licenza, senza permesso scritto dalla WABCO. Toute réimpression ou reproduction de ce document, toute exploitation ou communication de son contenu sont interdites, sauf autorisation écrite de la WABCO. No es permitido copiar o reproducir este documento, ni utilizar el contenido o el contenido con licencia, sin el consentimiento escrito de WABCO. Kopiranje ovog dokumenta i njegovo korišćenje, kao i korišćenje sadržaja ovog dokumenta, bez pismog odobrenja WABCO je zabranjeno. Kopeerend van dit document en het gebruik daarvan is niet toegestaan. Het verspreiden van de inhoud van dit document is niet toegestaan. Het verspreiden van de inhoud van dit document is niet toegestaan.



General Specifications: JED-334-0		Copyright WABCO®		WABCO	
Further Technical Data:		Date	Drawn	Signature	
Doc. Code:	Sheet: To:	2011-12-01	Buczyko	QUICK COUPLING SCHNELLKUPPLUNG RACCORD RAPIDE ACCOPIAMENTO RAPIDO	
General Tolerances JED-261		Checked	Hlodik	Expert	
Range of Nominal Dimensions (± mm)		BUCZYKO		Material No.	
Class	1) ≤ 50 > 50 > 180 > 400	Mates		Scale	Date of first issue
Fine	0.5 1.0 1.5 2.0	1:1		1:1	Doc.Code Language Sheet
Medium	1.0 2.0 3.0 4.0	Size		452 803 004 0	005 ML 1/1
Coarse	2.0 3.5 5.0 6.5	CAD System		Pro/E	Replacement for
Tapped Holes acc. JED-152		Ech.No.		155975	890 158 411 0
1) Tolerance Class Applied Crossmarked		Revision		2 E	5711
		Tech. Resp.		100mm	