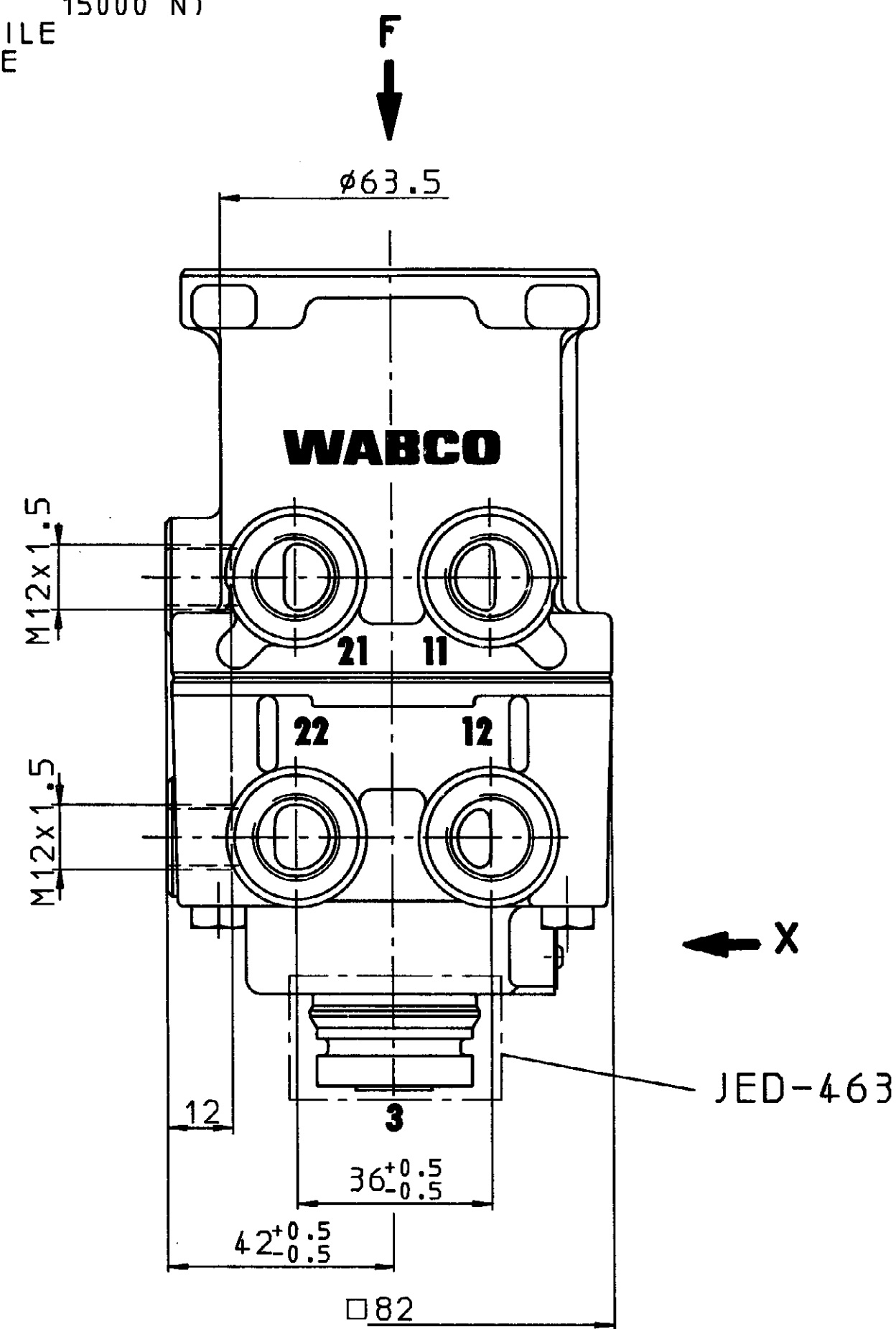
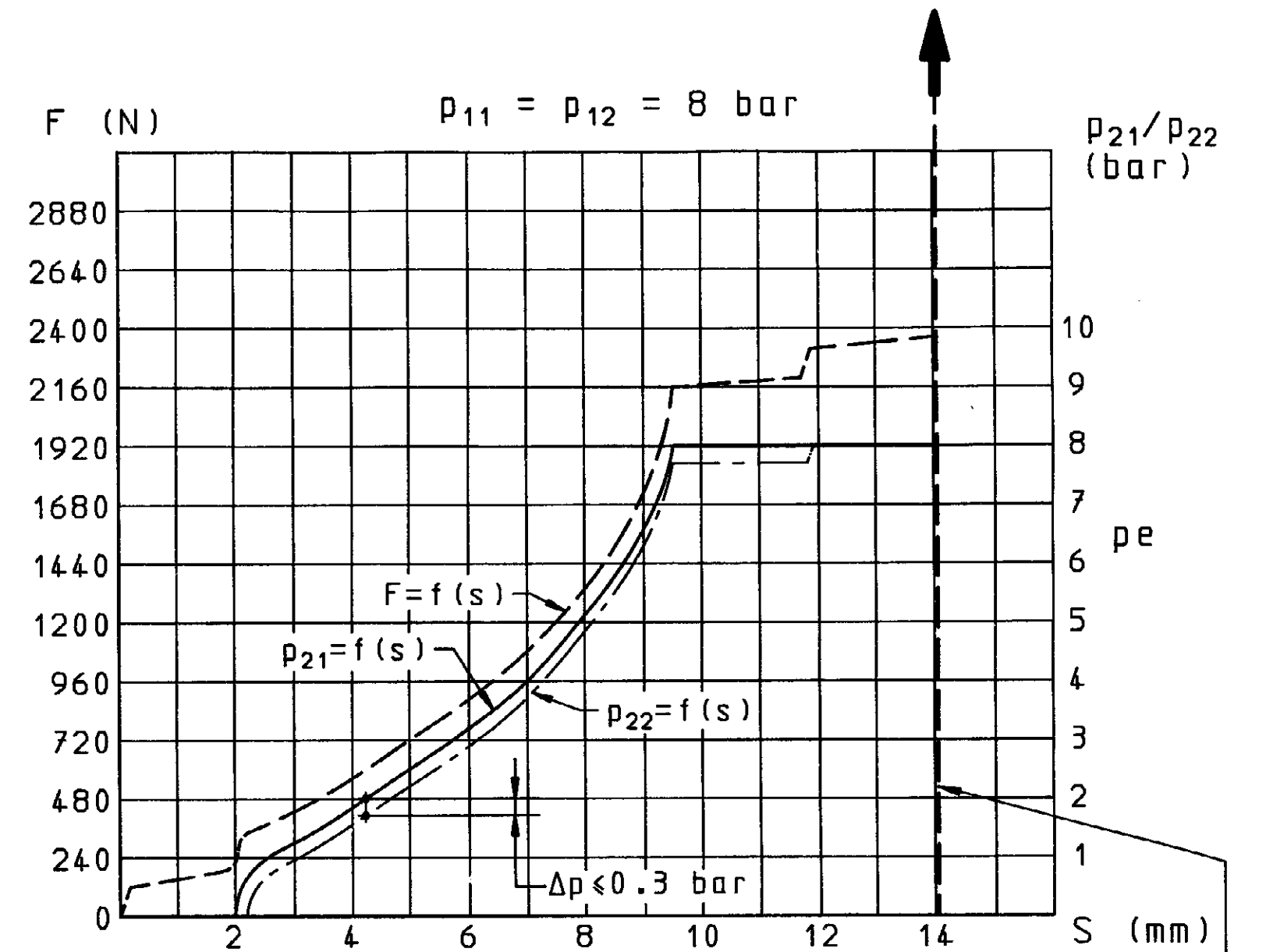
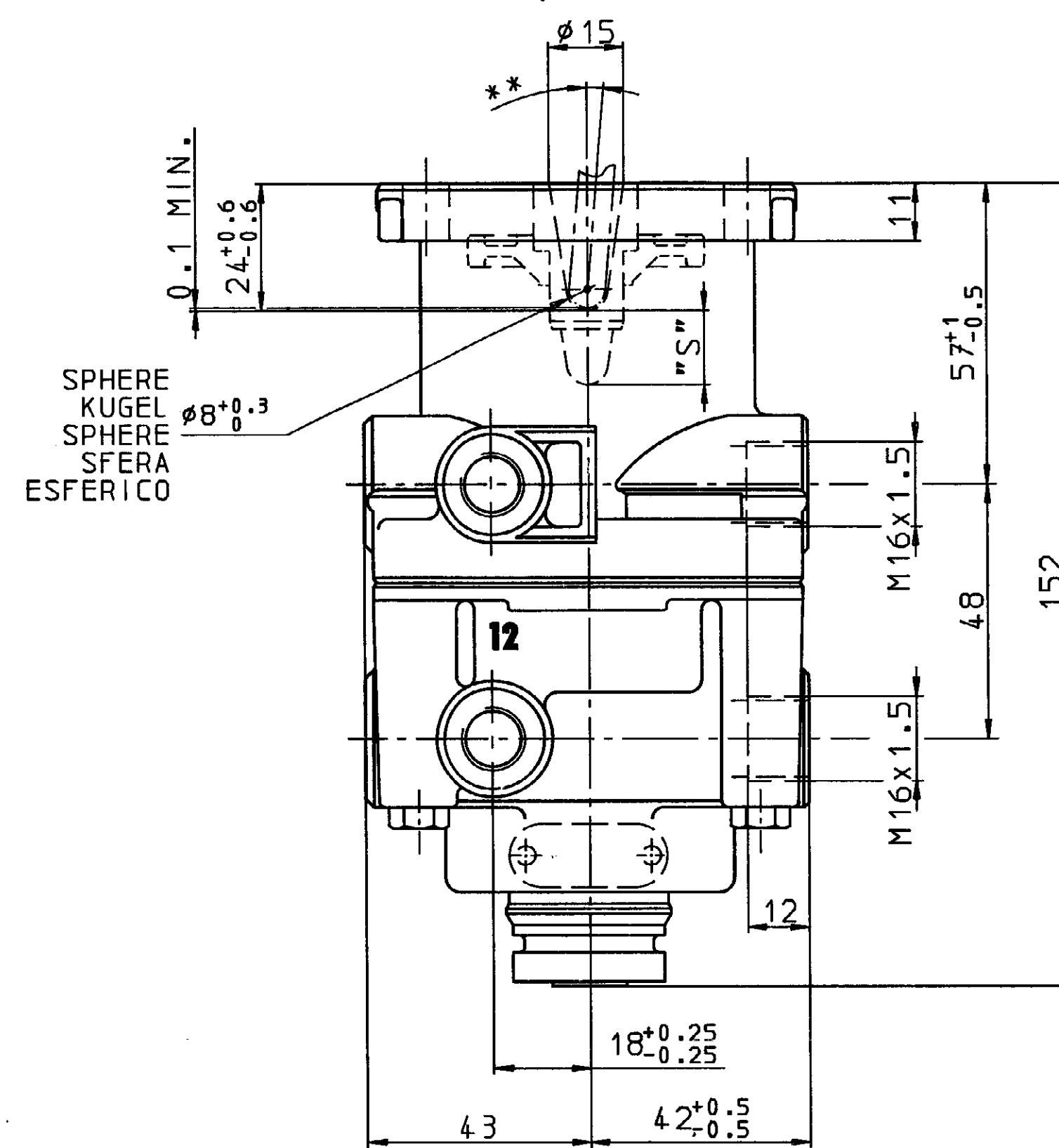


F (MAX. ADMISSIBLE ZULAESSIG 15000 N)  
 ADMISSE AMMISSIBILE  
 ADMISSIBLE ADMISIBILE



\*\* ALL ROUND ALLSEITIG  
 UNIVERSEL SU CIASCUN LATO  
 DESPLAZ. ANGULAR MAX. 5°



AT FAILURE CIRCUIT 1: NECESSARY COURSE S>14 mm  
 NECESSARY FORCE F=3400 N  
 BEI AUSFALL KREIS 1: ERFORDERLICHER WEG S>14 mm  
 ERFORDERLICHER KRAFT F=3400 N  
 EN CAS DE DEFAILLANCE: COURSE NECESSAIRE S>14 mm  
 FORCE NECESSAIRE F=3400 N  
 IN CASO DI DIFETTO: CORSA NECESSARIA S>14 mm  
 FORZA NECESSARIA F=3400 N  
 EN CASO DE FALLO: CARRERA NECESARIA S>14 mm  
 FUERZA NECESARIA F=3400 N

\*) STOP WITHIN THE DEVICE ADMISSIBLE  
 ANSCHLAG IM GERAET ZULAESSIG  
 BUTEE DANS L'APPAREIL ADMISE  
 ARRESTO NEL APPARATO AMMISSIBILE  
 TOPE DENTRO DEL APARATO ADMISIBILE

11/12 SUPPLY VORRAT  
 ALIMENTATION ALIMENTAZIONE  
 ALIMENTACION

21/22 OUTLET AUSGANG  
 SORTIE USCITA  
 UTILIZACION

3 EXHAUST ENTLUEFTUNG  
 ECHAPPEMENT SCARICO  
 ESCAPE

MEDIUM: AIR  
 MEDIUM: LUFT  
 FLUIDE: AIR  
 FLUIDO: ARIA  
 FLUIDO: AIRE

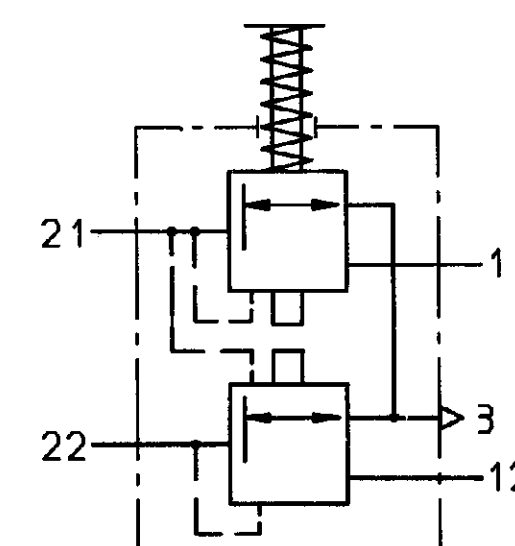
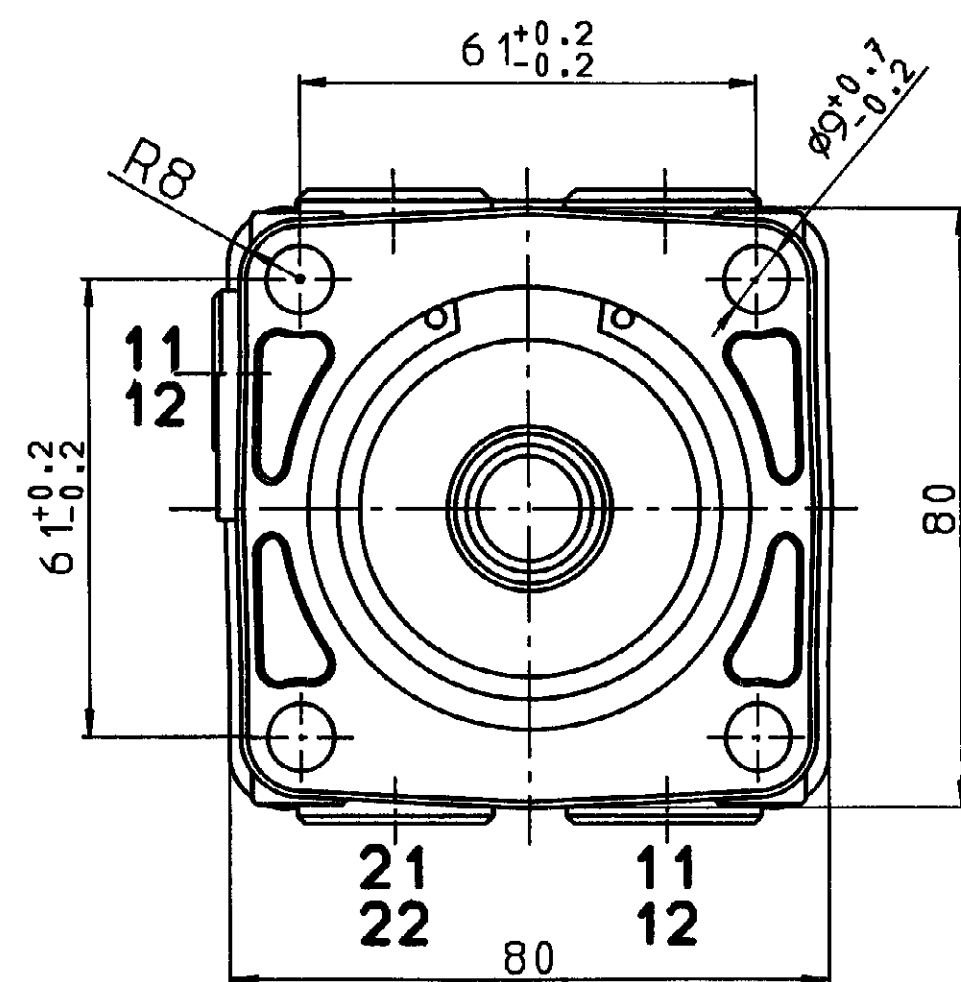
NOMINAL DIAMETER: NENNWEITE:  
 DIAMETRE NOMINAL: 78.5 mm<sup>2</sup> = ∅10  
 DIAMETRO NOMINALE:  
 DIAMETRO NOMINAL:

WORKING PRESSURE: BETRIEBSDRUCK:  
 PRESSION D'UTILISATION: p<sub>e</sub> = MAX. 8.5 bar  
 PRESSIONE DI ESERCIZIO:  
 PRESSION DE UTILIZACION:

(TEMPORARILY: KURZZEITIG:  
 (BREVE TEMPO DUREE: p<sub>e</sub> = MAX. 10 bar)  
 (SOLO BREVE TIEMPO:

INSTALLATION POSITION: EXHAUST SHOWN AT BASE (AXIS CENTRE OF THE DEVICE DEVIATES MAX. 45° FROM VERTICAL)  
 EINBAULAGE: ENTLUEFTUNG NACH UNTEN (MITTELACHSE DES GERAETES MAX. 45° VON DER SENKRECHTEN ABWEICHEND)  
 POSITION D'INSTALLATION: ECHAPPEMENT VERS LE BAS (ECART DE L'AXE MEDIAN DE L'APPAREIL PAR RAPPORT A LA VERTICALE: 45° MAX.)  
 POSIZIONE DI MONTAGGIO: SCARICO VERSO IL BASSO (DEVIAZIONE ASSE APPARECCHIO RISPETTO ALLA VERTICALE: 45° MAX.)  
 POSICION DE MONTAJE: ESCAPE HACIA ABAJO (DESVIACION DEL EJE DEL APARATO RESPECTO A LA VERTICAL: 45° MAX.)

TORQUE FOR CONNECTIONS: ANZUGSMOMENT FUER EINSCHRAUBSTUTZEN:  
 COUPLE DE SERRAGE DES RACCORDS: M12x1.5: M=MAX. 21 Nm  
 COPPIA DI SERRAGGIO DEI RACCORDI: M16x1.5: M=MAX. 34 Nm  
 PAR DE APRIETO DE LOS RACORES:



|  |      |                             |           |                         |                  |
|--|------|-----------------------------|-----------|-------------------------|------------------|
| GENERAL SPECIFICATION: JED-374         |      | CABIN-BRAKING COP/STOP      |           | <b>WABCO</b>            |                  |
| FURTHER TECHNICAL DATA:                |      | DATE: 94-03-04              |           | BRAKE VALVE             |                  |
| DOC. CODE: SHEET: 70                   |      | REVISION: 1/1               |           | MOTORWAGEN BREMSVENTIL  |                  |
| GENERAL TOLERANCES                     |      | CHECKED: 37-07-10           |           | ROBINET DE FREINAGE     |                  |
| RANGE OF NOMINAL DIMENSIONS (f = 0.01) |      | DRAWN: ac                   |           | DISTRIBUTORE DI COMANDO |                  |
| CLASS 1)                               | ±0.5 | ±1.0                        | ±1.5      | ±2.0                    | VALVULA DE FRENO |
| PIPE                                   | 0.5  | 1.0                         | 1.5       | 2.0                     |                  |
| MEDIUM                                 | X    | 2.0                         | 3.0       | 4.0                     |                  |
| CHAMFER                                | 2.0  | 3.5                         | 5.0       | 6.5                     |                  |
| TAPPED HOLES ACC. ISO 8837 / JIS-155   |      | PRODUCT IDENTIFICATION NO.: |           | DRW. CODE SHEET         |                  |
| 1) TOLERANCE CLASS APPLIER CONSIDERED  |      | 461 315 063 0               |           | 605 1/1                 |                  |
| ACQ. NO.                               | REV. | DATE                        | DRW. CODE | REPLACEMENT FOR         |                  |
|  |      |                             | A 1 140   | WES 63385 7             |                  |