

1 2 3 4 5 6 7 8 9 10 11 12

A B C D E F G H

ALL ROUND
ALLSEITIG
UNIVERSAL
SU CIASCUN LATO

MAX. 5°

WABCO

21 11

22 12

36±0.5

3

42±0.5

82

57±0.5

M12×1.5
JED-464

48

M12×1.5
JED-464

X

WABCO

461 315 153 0

Ø9^{+0.7}_{-0.2}

61±0.2

80

21 11

22 12

61±0.2

80

R8

ADMISSIBLE
ZULAESSIG
ADMISE
AMMISSIBILE

F (MAX. 15000 N)

Ø63.5

Ø15

**

0.1 MIN.

11

12

48

M16×1.5
JED-464

152

18±0.25

JED-463

43

42±0.5

Ø8^{+0.3}_{-0.1} SPHERE
KUGEL
SPHERE
SFERA

F [N]

p₁₁ = p₁₂ = 8 bar

p₂₁/p₂₂ [bar]

S [mm]

F = f(s)

p₂₁ = f(s)

p₂₂ = f(s)

*) 14^{+1.2}_{-0.2}

Δp ≤ 0.3 bar

AT FAILURE CIRCUIT 1 : NECESSARY COURSE S ≥ 14 mm
NECESSARY FORCE F = 3400 N
BEI AUSFALL KREIS 1 : ERFORDERLICHER WEG S ≥ 14 mm
ERFORDERLICHE KRAFT F = 3400 N
EN CAS DE DEFAILLANCE : COURSE NECESSAIRE S ≥ 14 mm
FORCE NECESSAIRE F = 3400 N
CIRCUIT 1
IN CASO DI DIFETTO : CORSA NECESSARIA S ≥ 14 mm
FORZA NECESSARIA F = 3400 N
CIRCUITI 1

11 / 12 SUPPLY
VORRAT
ALIMENTATION
ALIMENTAZIONE

21 / 22 OUTLET
AUSGANG
SORTIE
USCITA

3 EXHAUST
ENTLUEFTUNG
ECHAPPEMENT
SCARICO

THERMAL RANGE OF APPLICATION:
THERMISCHER ANWENDUNGSBEREICH:
GAMME D' APPLICATION THERMIQUE:
CAMPO DI APPLICAZIONE:

MEDIUM: AIR
MEDIUM: LUFT
FLUIDE: AIR
FLUIDO: ARIA

NOMINAL DIAMETER:
NENNWEITE:
DIAMETRE NOMINAL:
DIAMETRO NOMINALE:

78.5 mm² ± Ø10

WORKING PRESSURE:
BETRIEBSDRUCK:
PRESSION D'UTILISATION : p_e = MAX. 8.5bar
PRESSIONE DI ESERCIZIO :

(TEMPORARILY :
(KURZZEITIG : p_e = MAX. 10 bar)
(DE COURTE DUREE :
(BREVE TEMPO SOLO :

TORQUE FOR CONNECTIONS:
ANZUGSMOMENT FUER EINSCHRAUBSTUTZEN:
COUPLE DE SERRAGE DES RACCORDS:
COPPIA DI SERRAGGIO DEI RACCORDI:

M12×1.5: M=MAX. 21 Nm
M16×1.5: M=MAX. 34 Nm

INSTALLATION POSITION : EXHAUST SHOWN AT BASE (AXIS CENTRE OF THE
DEVICE DEVIATES MAX.±45° FROM VERTICAL)
EINBAULAGE : ENTLUEFTUNG NACH UNTEN (MITTELACHSE DES GERAETES
MAX.±45° VON DER SENKRECHTEN ABWEICHEND)
POSITION D'INSTALLATION : ECHAPPEMENT VERS LE BAS (ECART DE L'AXE
MEDIAN DE L' APPAREIL PAR RAPPORT A LA
VERTICALE:±45° MAX.)
POSIZIONE DI MONTAGGIO : SCARICO VERSO IL BASSO (DEVIAZIONE ASSE
APPARECCHIO RISPETTO ALLA VERTICALE: MAX.±45°)

21 11

22 12

3

GENERAL SPECIFICATION: JED-334

FURTHER TECHNICAL DATA:

DOC. CODE: SHEET: TO

GENERAL TOLERANCES

RANGE OF NOMINAL DIMENSIONS (± mm)

CLASS	1)	≤50	50-180	180-400	400
FINE	×	0.5	1.0	1.5	2.0
MEDIUM	×	1.0	2.0	3.0	4.0
COARSE	×	2.0	3.5	5.0	6.5

± 3°

TAPPED HOLES ACC. ISO 4039 / JED-162

1) TOLERANCE CLASS APPLIED CROSSHATCHED

DEN-NO. REV. DATE

100mm

EXPERT CODE 736

PRODUCT TYPE 00X

DATE: 95-03-29

DRAWN: KULERSKY

CHECKED: MARTINI

STANDARDIZATION: PANTZER

PRODUCT IDENTIFICATION NO. 461 315 153 0

DOC. CODE: 605

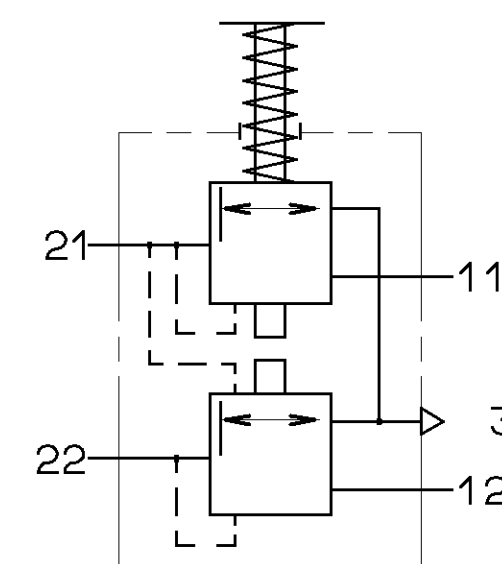
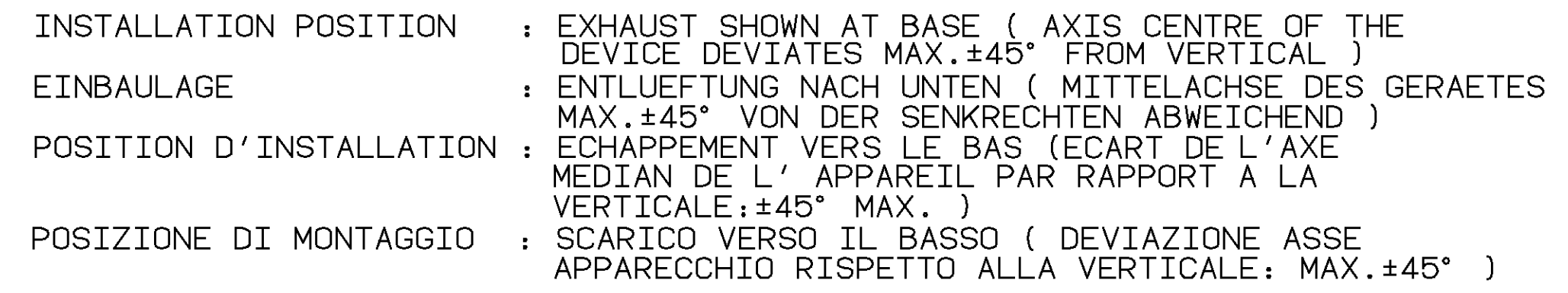
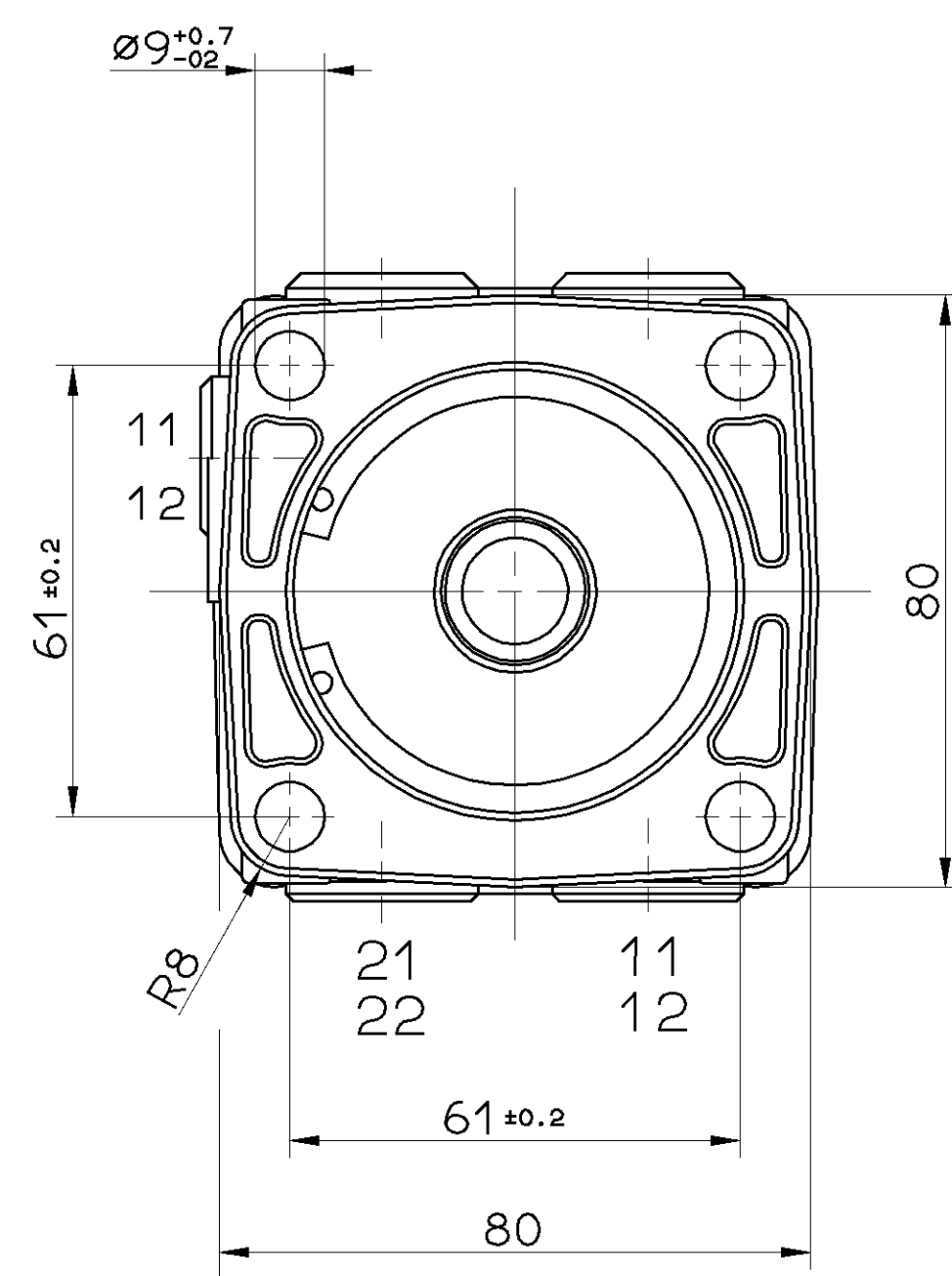
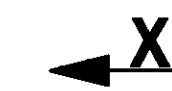
SHEET: 1/1

SHAPE CODE

REPLACEMENT FOR

WABCO

BRAKE VALVE
MOTORWAGEN-BREMSVENTIL
ROBINET DE FREINAGE
DISTRIBUTORE DI COMANDO



GENERAL SPECIFICATION: JED-334				CADAM-DRAWING COPYRIGHT		WABCO	
FURTHER TECHNICAL DATA:				DATE			
DOC. CODE:		SHEET: TO		DRAWN:		95-03-29 KULERSKY	
GENERAL TOLERANCES				CHECKED:		BRAKE VALVE	
RANGE OF NOMINAL DIMENSIONS (± mm)				95-03-29 MARTINI		MOTORWAGEN-BREMSVENTIL	
CLASS 1)	≤50 >50 >80 ≤180 ≤400 >400	▽		STANDARDIZATION:		ROBINET DE FREINAGE	
FINE	0,5 1,0 1,5 2,0			95-03-29 PANTZER		DISTRIBUTORE DI COMANDO	
MEDIUM	× 1,0 2,0 3,0 4,0						
COARSE	2,0 3,5 5,0 6,5						
TAPPED HOLES ACC. ISO 4039 / JED-182				MASS SCALE		PRODUCT IDENTIFICATION NO.	
				≈1,15 1:1		DCC. CODE SHEET	
				SIZE T.R.I.		461 315 153 0 605 1/1	
				A 1 140		SHAPE CODE REPLACEMENT FOR	
1) TOLERANCE CLASS APPLIED CROSSMARKED		DOH-NO. REV.		DATE			
9				100mm		EXPORT CODE 7136	
						PROJECT TYPE 0101	