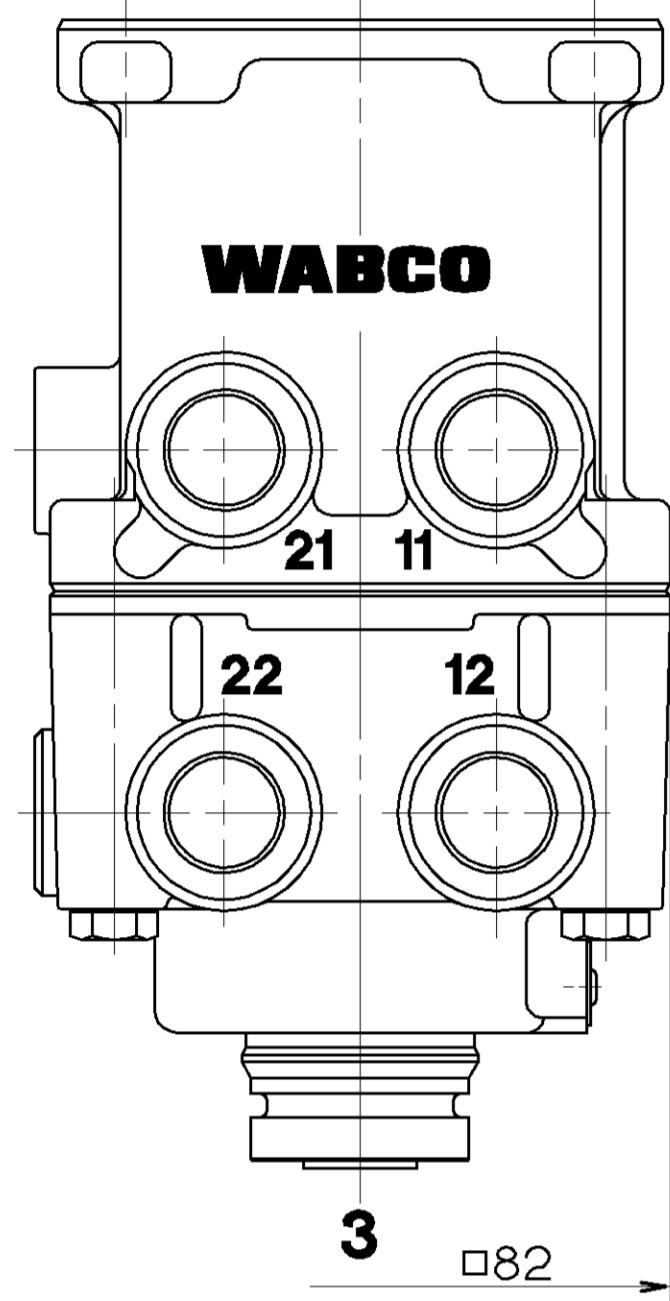


ALL ROUND  
ALLSEITIG  
UNIVERSAL  
SU CIASCUN LATO

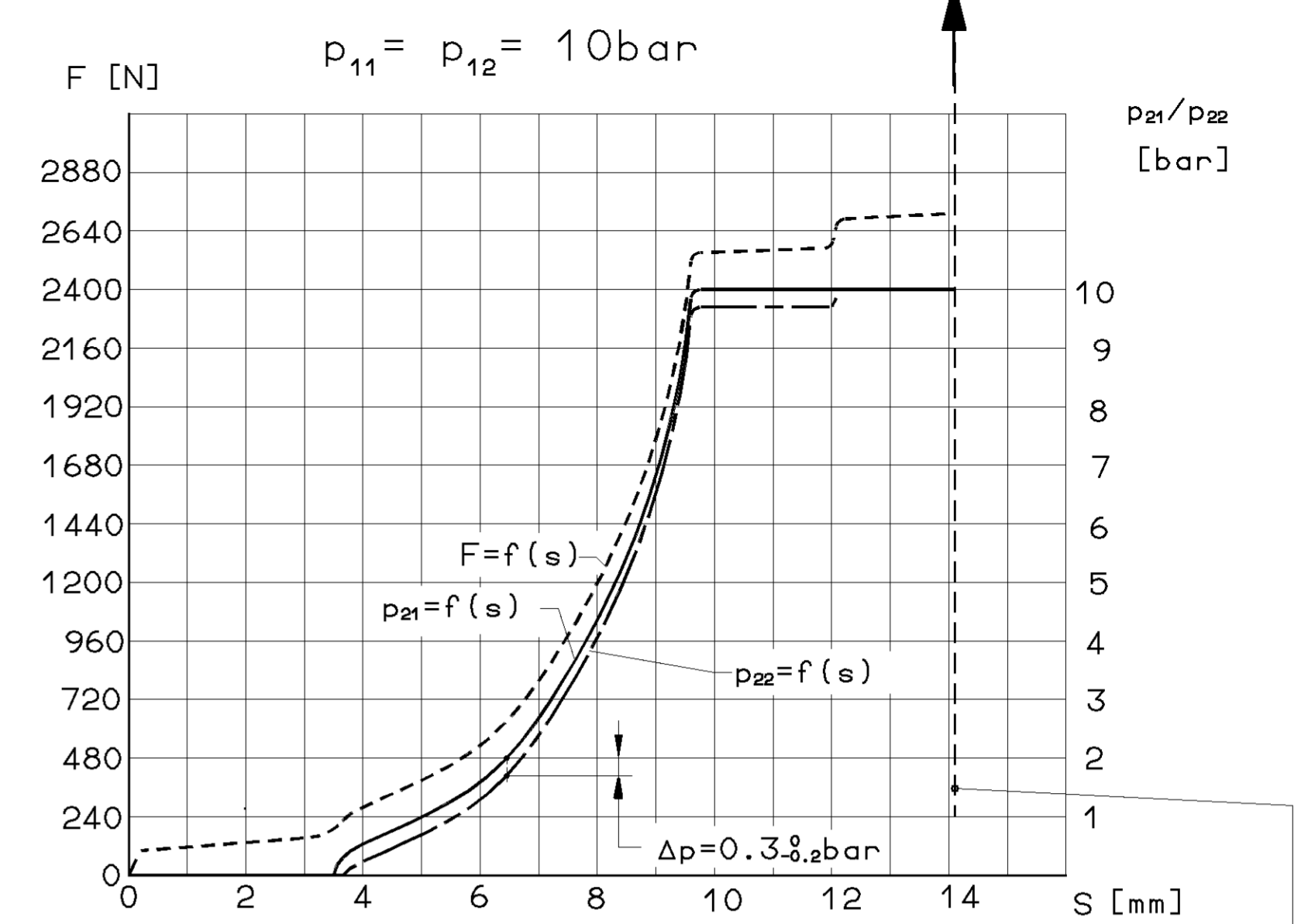
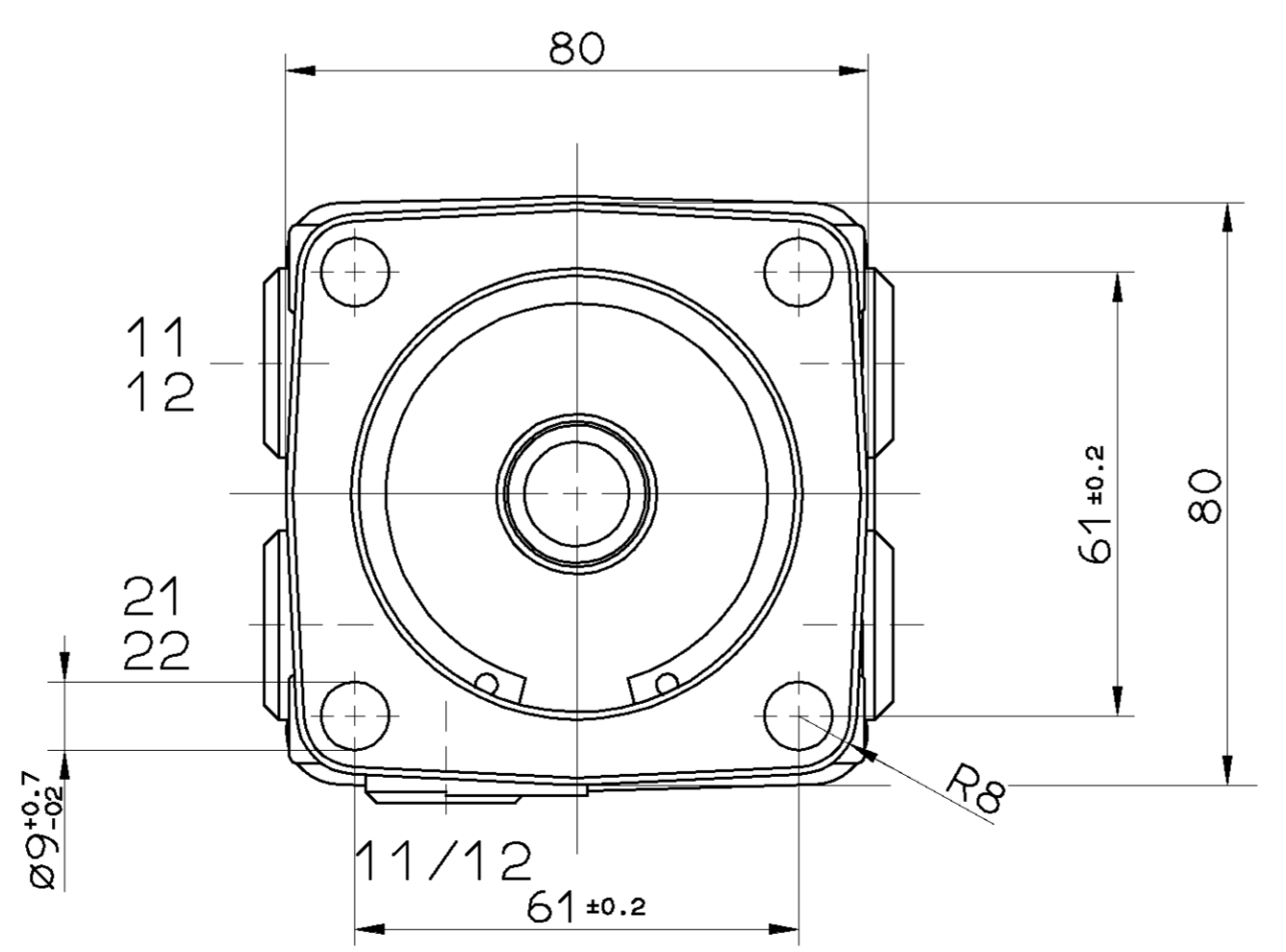
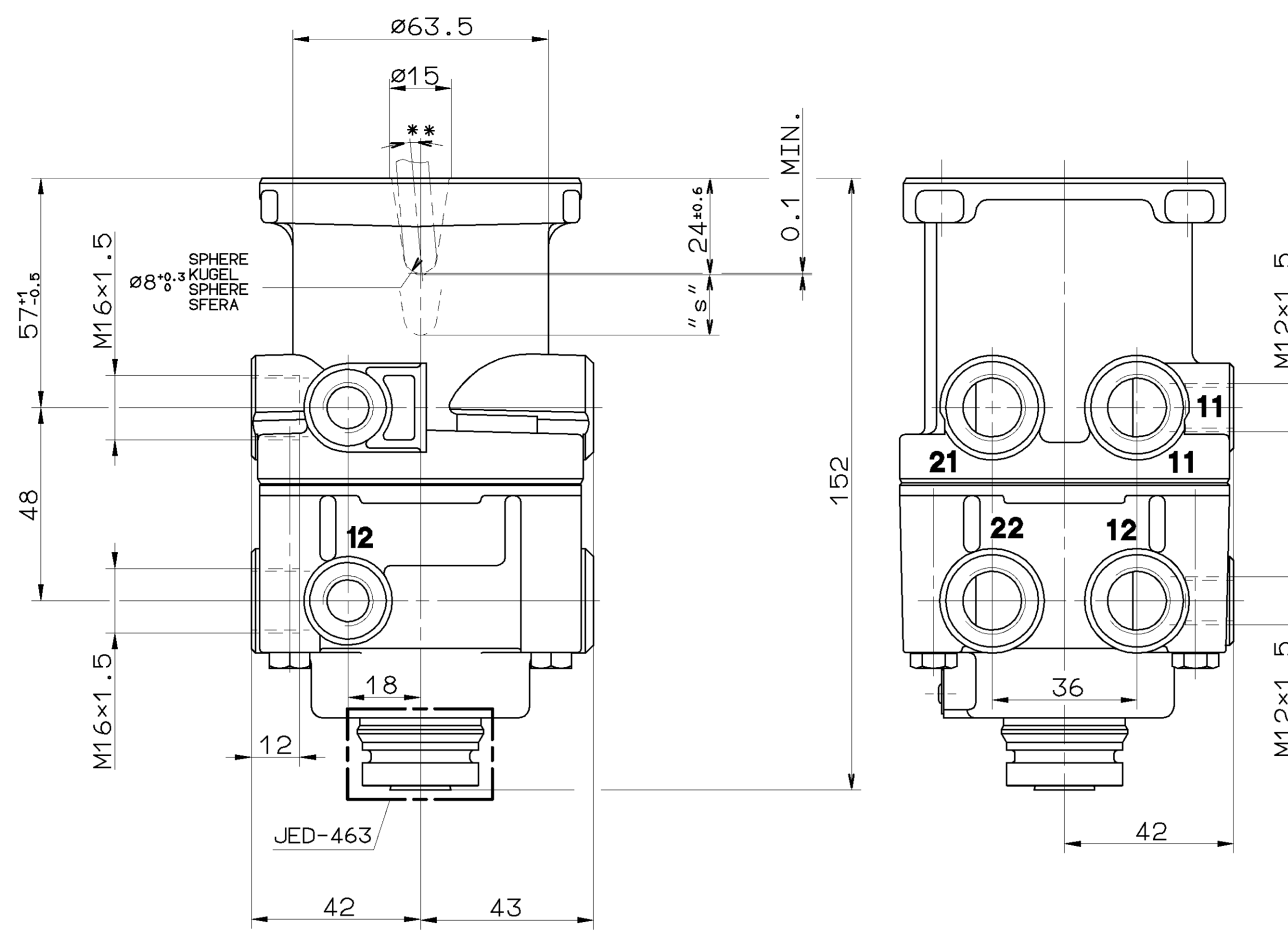
MAX. 5°



X



ADMISSIBLE ZULAESSIG  
ADMISE ADMISSIBILE  
15000 N



\*) STOP WITHIN THE DEVICE ADMISSIBLE ANSCHLAG IM GERÄT ZULAESSIG BUTEE DANS L'APPAREIL ADMISE ARRESTO NEL APPARATO AMMISSIBILE  
AT FAILURE CIRCUIT 1 : NECESSARY COURSE  $S \geq 14 \text{ mm}$  NECESSARY FORCE  $F = 4100 \text{ N}$  BEI AUSFALL KREIS 1 : ERFORDERLICHE WEG  $S \geq 14 \text{ mm}$  ERFORDERLICHE KRAFT  $F = 4100 \text{ N}$  EN CAS DE DEFAILLANCE : COURSE NECESSAIRE  $S \geq 14 \text{ mm}$  FORCE NECESSAIRE  $F = 4100 \text{ N}$  IN CASO DI DIFETTO : CORSA NECESSARIA  $S \geq 14 \text{ mm}$  FORZA NECESSARIA  $F = 4100 \text{ N}$

1 / 12 SUPPLY VORRAT ALIMENTATION ALIMENTAZIONE  
21 / 22 OUTLET AUSGANG SORTIE USCITA  
3 EXHAUST ENTLUEFTUNG ECHAPPEMENT SCARICO

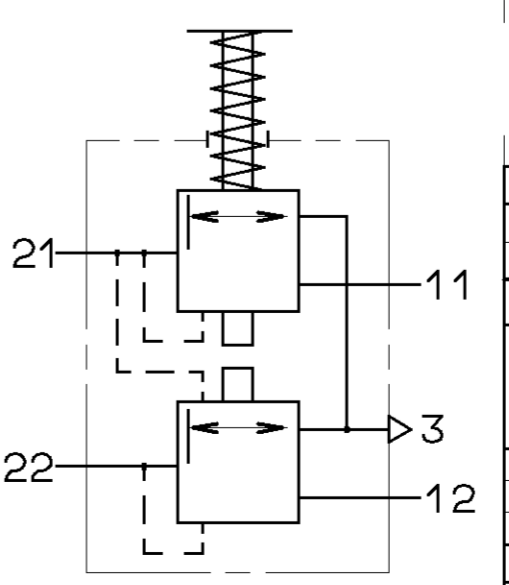
THERMAL RANGE OF APPLICATION: THERMISCHER ANWENDUNGSBEREICH: MEDIUM: AIR  
GAMME D' APPLICATION THERMIQUE: -40°C...+80°C MEDIUM: LUFT  
CAMPO DI APPLICAZIONE: FLUIDE: AIR  
FLUIDO: ARIA

NOMINAL DIAMETER: NENNWEITE: 78.5 mm<sup>2</sup> ± ø10  
DIAMETRE NOMINAL: DIAMETRO NOMINALE:

WORKING PRESSURE: BETRIEBSDRUCK: (TEMPORARILY: (KURZZEITIG: :  
PRESSION D'UTILISATION:  $p_e = \text{MAX. } 10 \text{ bar}$  (DE COURTE DUREE: :  $p_e = \text{MAX. } 11 \text{ bar}$ )  
PRESSIONE DI ESERCIZIO: (BREVE TEMPO SOLO: :

TORQUE FOR CONNECTIONS: ANZUGSMOMENT FUER EINSCHRAUBSTUTZEN: M12x1.5: M=MAX. 21 Nm  
COUPLE DE SERRAGE DES RACCORDS: M16x1.5: M=MAX. 34 Nm  
COPPIA DI SERRAGGIO DEI RACCORDI:

INSTALLATION POSITION : EXHAUST SHOWN AT BASE ( AXIS CENTRE OF THE DEVICE DEVIATES MAX.±45° FROM VERTICAL )  
EINBAULAGE : ENTLUEFTUNG NACH UNTEN ( MITTELACHSE DES GERÄTES MAX.±45° VON DER SENKRECHTEN ABWEICHEND )  
POSITION D'INSTALLATION : ECHAPPEMENT VERS LE BAS ( ECART DE L'AXE MEDIAN DE L' APPAREIL PAR RAPPORT A LA VERTICALE:±45° MAX. )  
POSIZIONE DI MONTAGGIO : SCARICO VERSO IL BASSO ( DEVIAZIONE ASSE APPARECCHIO RISPETTO ALLA VERTICALE: MAX.±45° )



GENERAL SPECIFICATION: JED-034		CAD/CAM DRAWING COPYRIGHT	
FURTHER TECHNICAL DATA:		DATE: SIGNATURE:	
DOC. CODE: SHEET: TO:		DRAWN: 97-11-13, KULERSKY	
CHECKED: 97-11-13, MARTINI		STANDARDIZATION:	
GENERAL TOLERANCES		PRODUCT IDENTIFICATION NO. 461 315 457 0	
RANGE OF NOMINAL DIMENSIONS ( ± mm )		DOC. CODE: 605	
CLASS	1)	SCALE: 1:1	SHEET: 1/1
<math>\leq 50</math>	±0.5	TAPPED HOLES ACC. ISO 4039 / JED-162	
<math>50 < \leq 180</math>	±1.0	1) TOLERANCE CLASS APPLIED CROSSHATCHED	
<math>180 < \leq 400</math>	±1.5	DEN. NO. REV. DATE	
<math>400 < \leq 630</math>	±2.0	A 1 140	
<math>630 < \leq 1000</math>	±3.0	SHAPE CODE	
> 1000	±4.0	REPLACEMENT FOR	
FINISH		EXPERT CODE: 7336	
FINE	±0.1	PRODUCT TYPE: 00X	
MEDIUM	±0.2		
COARSE	±0.5		