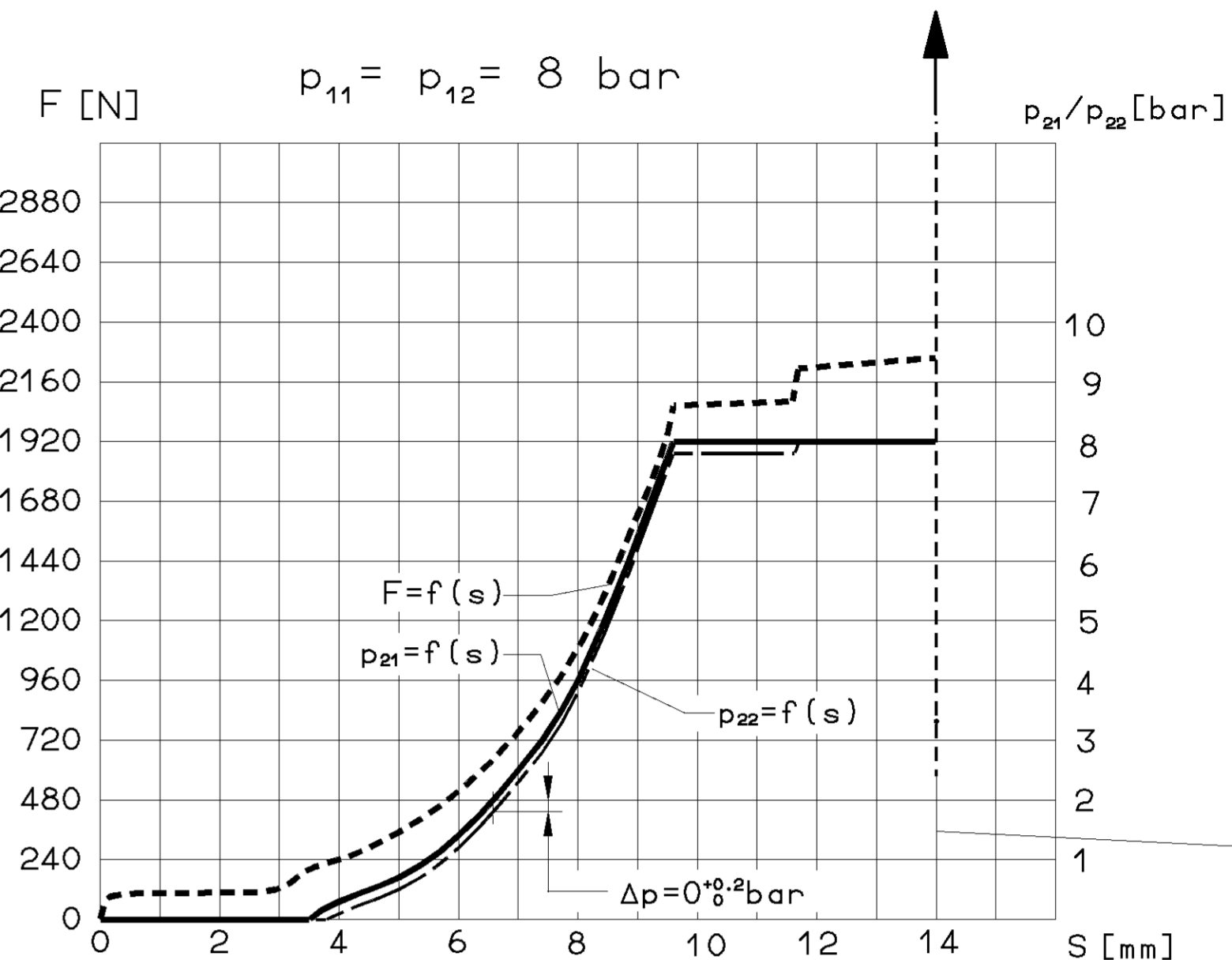
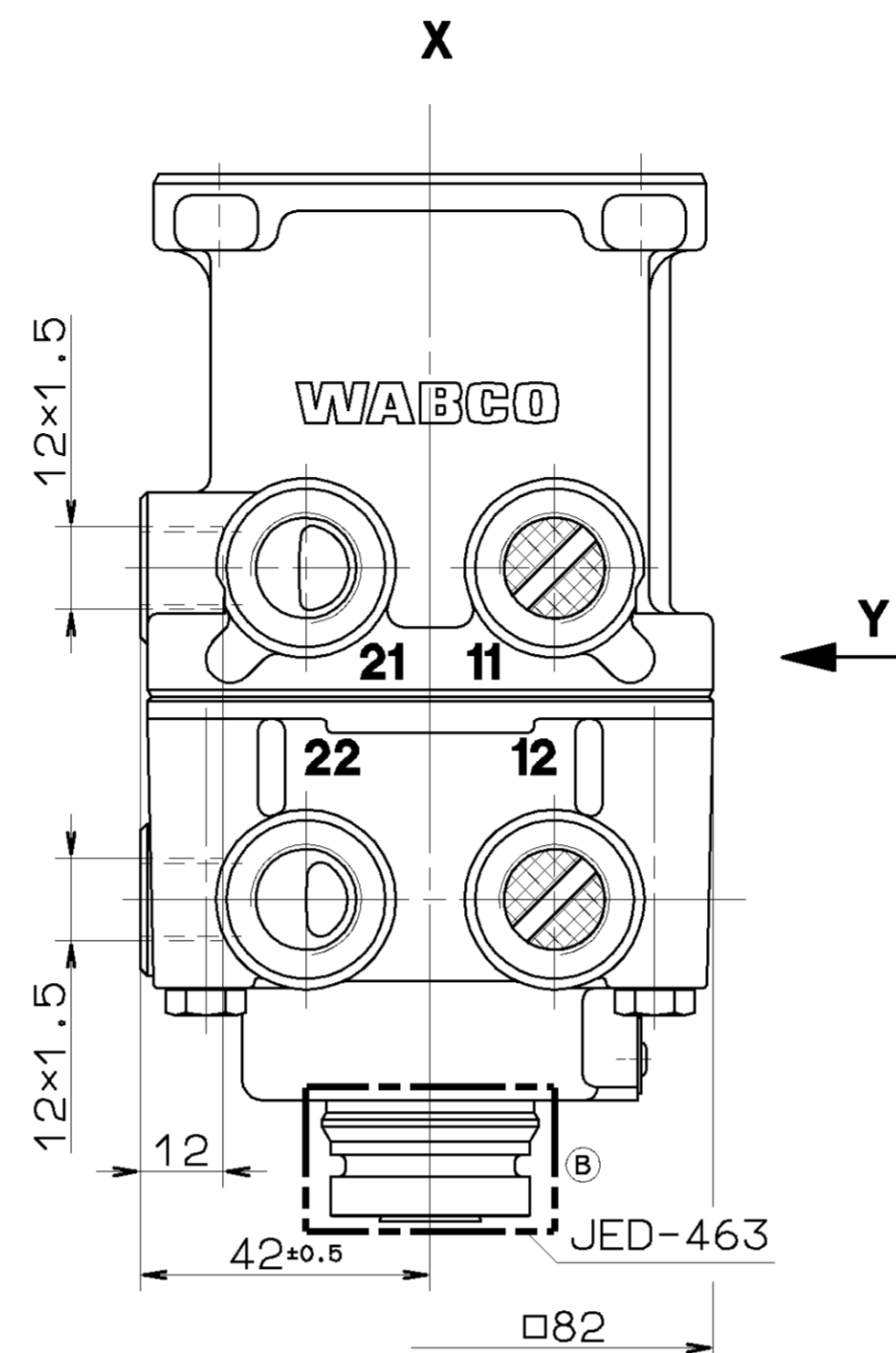
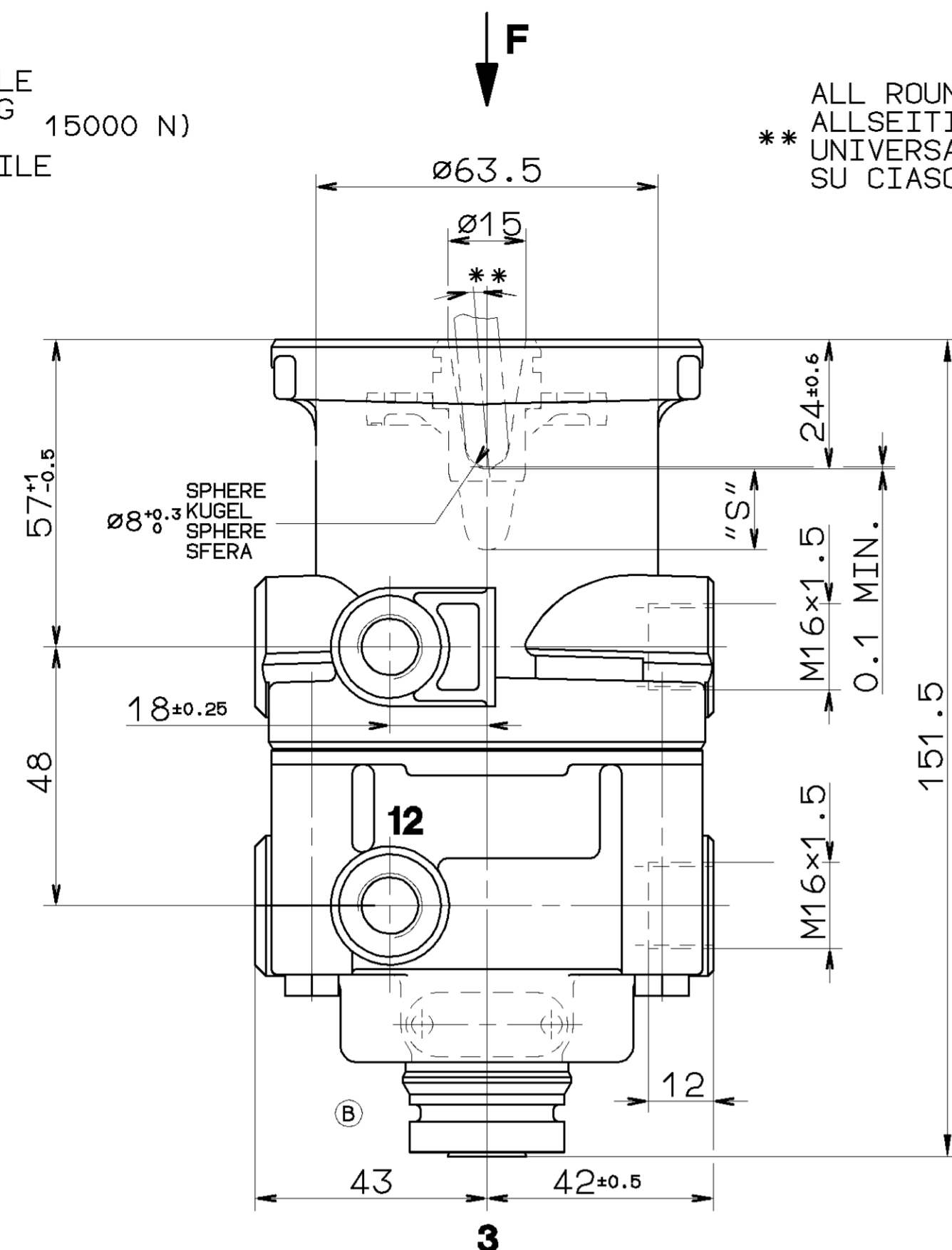


F (MAX.) ADMISSIBLE
ZULAESSIG 15000 N)
ADMISE
AMMISSIBILE

** ALL ROUND
ALLSEITIG
UNIVERSAL
SU CIASCUN LATO
MAX.5°



AT FAILURE CIRCUIT 1 : NECESSARY COURSE $S \geq 14$ mm
NECESSARY FORCE $F = 3400$ N
BEI AUSFALL KREIS 1 : ERFORDERLICHER WEG $S \geq 14$ mm
ERFORDERLICHE KRAFT $F = 3400$ N
EN CAS DE DEFAILANCE : COURSE NECESSAIRE $S \geq 14$ mm
FORCE NECESSAIRE $F = 3400$ N
IN CASO DI DIFETTO : CORSA NECESSARIA $S \geq 14$ mm
FORZA NECESSARIA $F = 3400$ N

*) STOP WITHIN THE DEVICE ADMISSIBLE
ANSCHLAG IM GERAET ZULAESSIG
BUTEE DANS L APPAREIL ADMISE
ARRESTO NEL APPARATO AMMISSIBILE

11/12 SUPPLY
VORRAT ALIMENTATION
ALIMENTAZIONE

21/22 OUTLET
AUSGANG SORTIE
USCITA

3 EXHAUST
ENTLUEFTUNG
ECHAPPEMENT
SCARICO

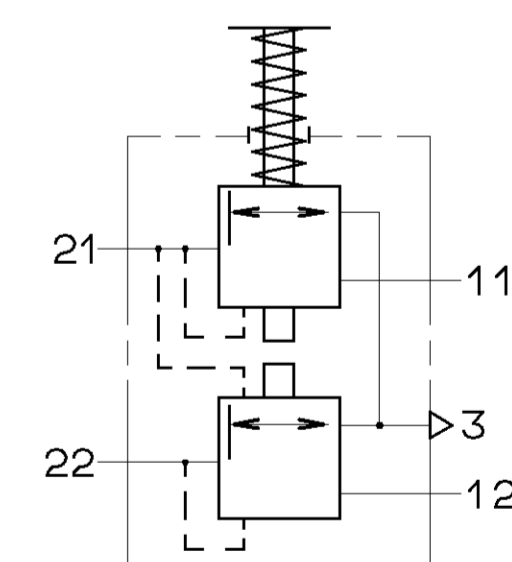
MEDIUM: AIR
MEDIUM: LUFT
FLUIDE: AIR
FLUIDO: ARIA

NOMINAL DIAMETER :
NENNWEITE : 78.5 mm \pm 0.10
DIAMETRE NOMINAL :
DIAMETRO NOMINALE :

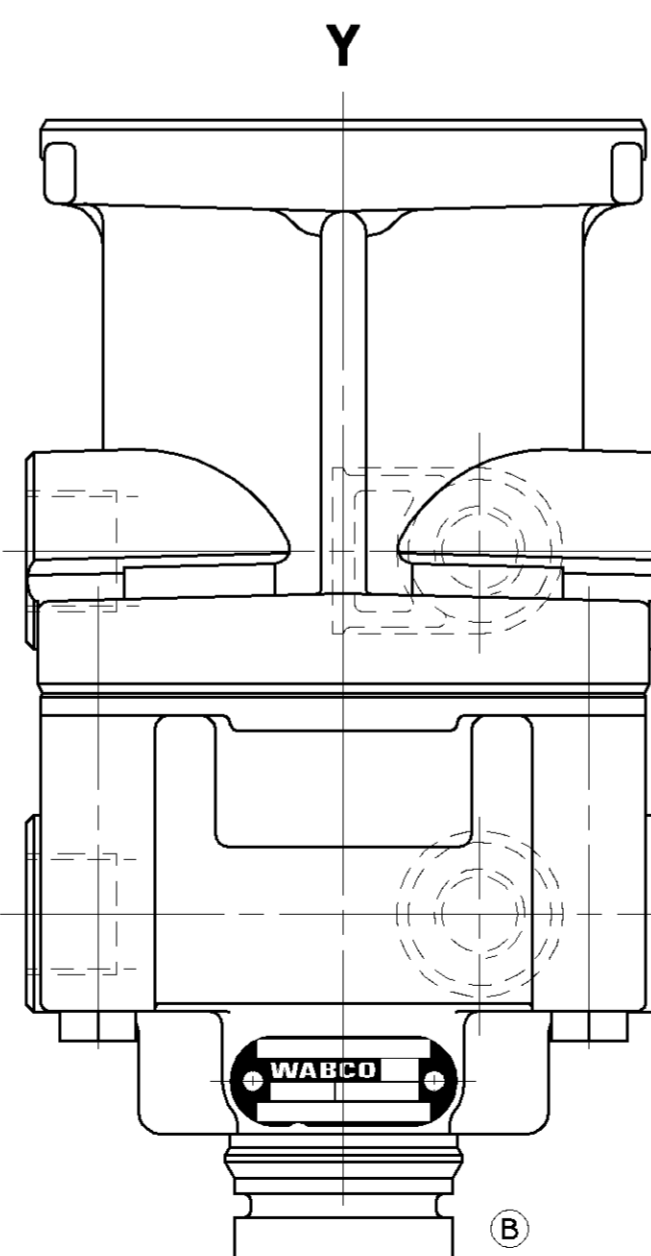
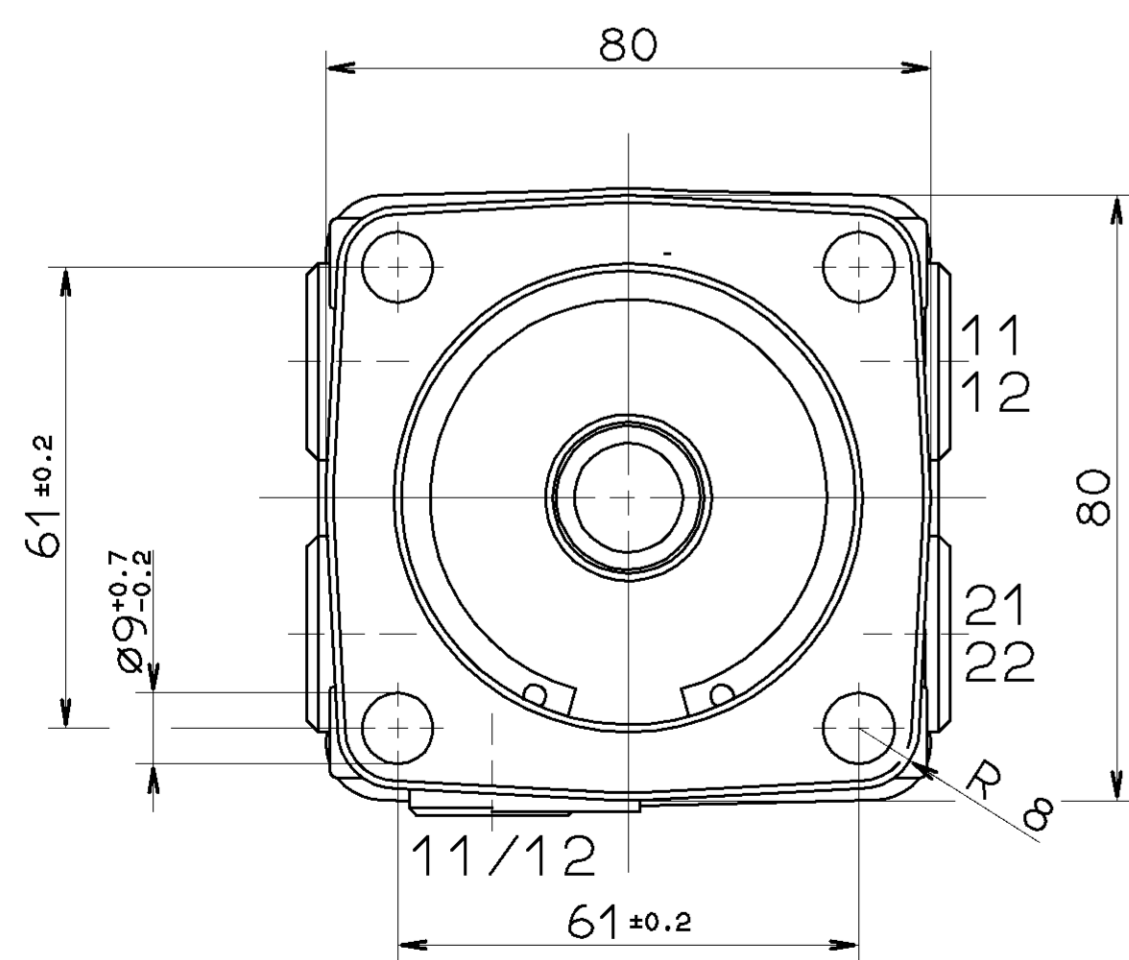
MAX. WORKING PRESSURE : (TEMPORARILY :
MAX. BETRIEBSDRUCK : (KURZZEITIG : $p_e = \text{MAX. } 10 \text{ bar}$)
PRESSION D UTILISATION MAXI : $p_e = 8.5 \text{ bar}$ (DE COURTE DUREE :
PRESSIONE DI ESERCIZIO MAX. : (BREVE TEMPO SOLO :

THERMAL RANGE OF APPLICATION :
THERM. ANWENDUNGSBEREICH : $-40^\circ \text{C} \dots +80^\circ \text{C}$
GAMME D APPLICATION THERMIQUE :
CAMPO DI APPLICAZIONE TERMICA :

TORQUE FOR CONNECTIONS
ANZUGSMOMENT FUER EINSCHRAUBSTUTZEN : M12x1.5: M=MAX. 21Nm
COUPLE DE SERRAGE DES RACCORDS : M16x1.5: M=MAX. 34Nm
COPPIA DI SERRAGIO DEI RACCORDI :



INSTALLATION POSITION: EXHAUST SHOWN AT BASE (AXIS CENTRE OF THE
DEVICE DEVIATES MAX. 45° FROM VERTICAL)
EINBAULAGE: ENTLUEFTUNG NACH UNTEN (MITTELACHSE DES GERAETES
MAX. 45° VON DER SENKRECHTEN ABWEICHEND)
POSITION D'INSTALLATION: ECHAPPEMENT VERS LE BAS (ECART DE L'AXE
MEDIAN DE L' APPAREIL PAR RAPPORT A LA
RAPPORT A LA VERTICALE: 45° MAX.)
POSIZIONE DI MONTAGGIO: SCARICO VERSO IL BASSO (DEVIAZIONE ASSE
APPARECCHIO RISPETTO ALLA VERTICALE: MAX. 45°)



GENERAL SPECIFICATION: JED-334		CAD/CAM DRAWING COPYRIGHT	
FURTHER TECHNICAL DATA:		DATE: 99-01-27	
DOC. CODE: SHEET: TO		SIGNATURE: SOMMER	
GENERAL TOLERANCES		DRAWN: 99-01-27	
RANGE OF NOMINAL DIMENSIONS (± mm)		CHECKED: MARTINI	
CLASS	1) 1) 1) 1)	STANDARDIZATION:	
FINE	0,5 1,0 1,5 2,0	PRODUCT IDENTIFICATION NO.	
MEDIUM	1,0 2,0 3,0 4,0	461 315 482 0	
COARSE	2,0 3,5 5,0 6,5	DOC. CODE SHEET	
TAPPED HOLES ACC. ISO 4039 / JED-162		605 1/1	
1) TOLERANCE CLASS APPLIED CROSSMARKED		REPLACEMENT FOR	
069714	4xB 99-01-26	461 315 482 0 OF (B)	
DN-NO.	REV.	DATE	
A 1	140	SHAPE CODE	
100mm		518	
EXPERT CODE 7336		PRODUCT TYPE 00X	

TUTTE LE INFORMAZIONI DI REPRODUCTION DE CE DOCUMENT, TOUTE REPRODUCTION OU COMMUNICATION DE SON CONTENU, SONT INTERDITES SANS LAutorisation écrite de WABCO. Toute réimpression, reproduction ou communication de ce document sans la permission écrite de WABCO est formellement interdite. Toute réimpression, reproduction ou communication de ce document sans la permission écrite de WABCO est formellement interdite.