

* MAJOR THREAD DIAMETER
 GEWINDEAUSSENDURCHMESSER 26^{+0.1}_{-0.6}
 DIAMETRE EXTERNEUR
 DIAMETRO ESTERNO

WORKING PRESSURE MAX.
 BETRIEBSDRUCK MAX. 10 bar
 PRESSION D'UTILISATION MAX.
 PRESSIONE DI ESERCIZIO MAX.

ACTUATING FORCE AT RESERVOIR PRESSURE
 BETAETIGUNGSKRAFT BEI VORRATSDRUCK = 5 bar: MAX. 72 N
 EFFORT DE COMMANDE SOUS PRESSION DE RESERVOIR = 7 bar: MAX. 90 N
 FORZA DI COMANDO PRESSIONE DI SERBATOIO

HOLDING FORCE AT RESERVOIR PRESSURE
 HALTEKRAFT BEI VORRATSDRUCK = 5 bar: MAX. 45 N
 EFFORT DE MAINTIEN SOUS PRESSION DE RESERVOIR = 7 bar: MAX. 48 N
 FORZA DI REGIME PRESSIONE DI SERBATOIO

* * COURSE
 BETAETIGUNGSWEG 5,7 ± 0,3 mm
 COURSE
 CORSA

ADMISSIBLE MEDIUM AIR
 ZULAESSIGES MEDIUM LUFT
 FLUIDE ADMISSIBLE AIR
 FLUIDO AMMISSIBILE ARIA

NOMINAL DIAMETER
 NENNWEITE ∅ 4 mm
 DIAMETRE NOMINAL
 DIAMETRO NOMINALE

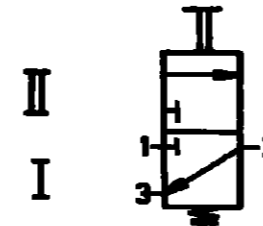
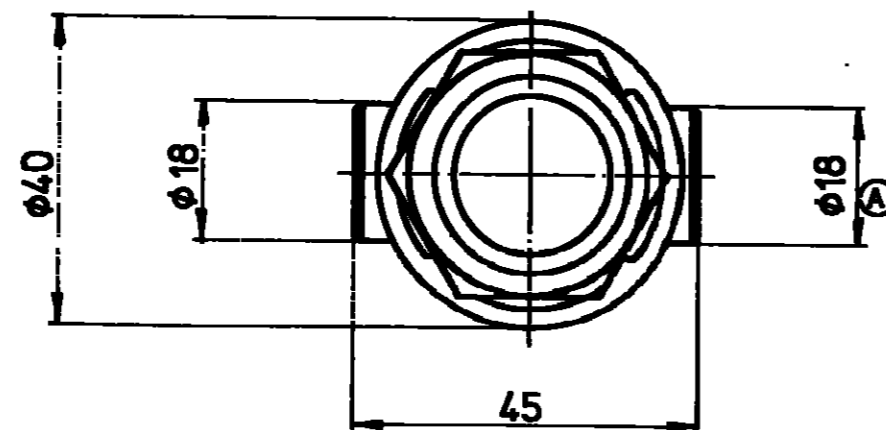
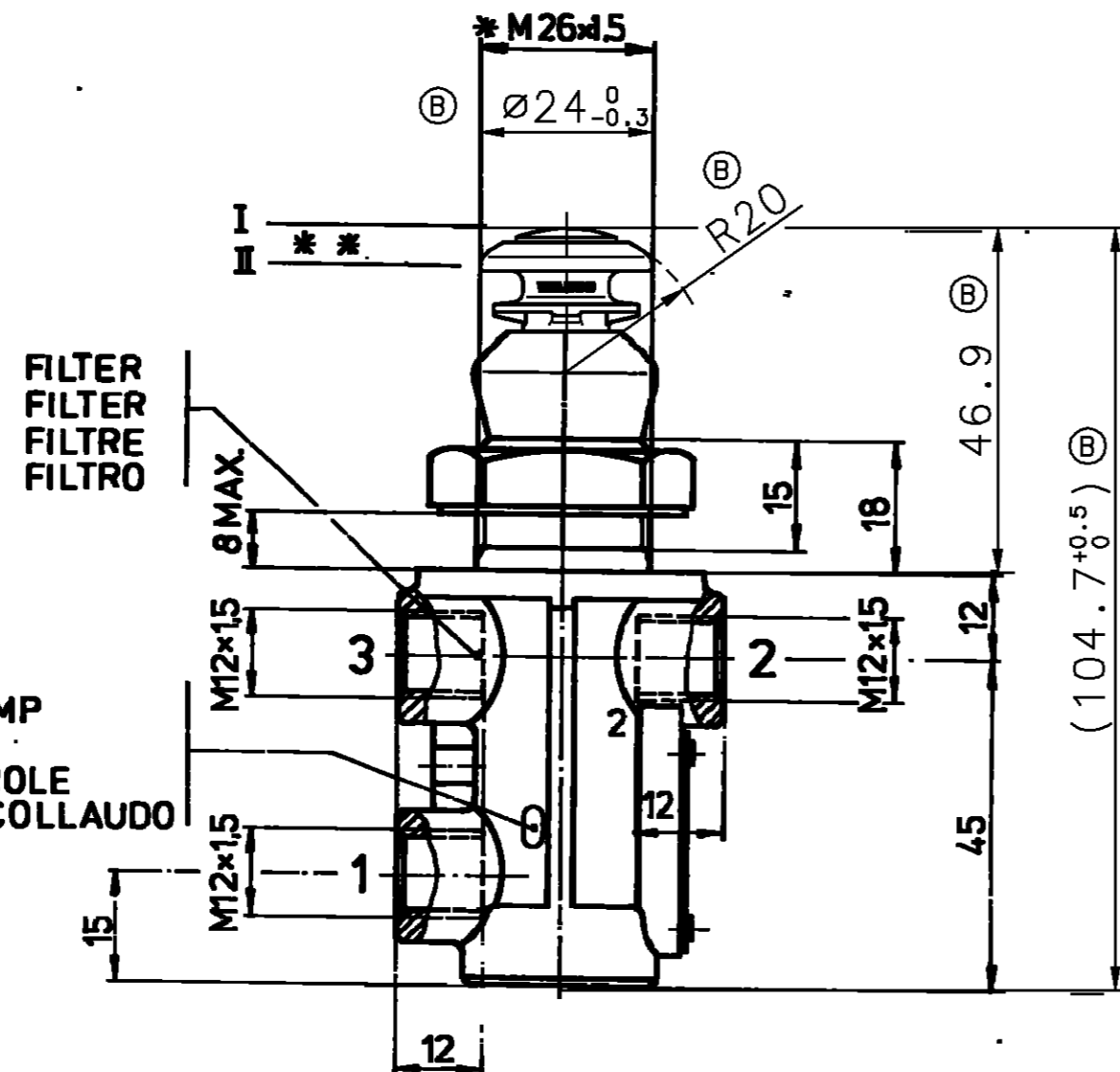
THERMAL RANGE OF APPLICATION
 THERMISCHER ANWENDUNGSBEREICH - 40 ... + 80° C
 GAMME D'APPLICATION THERMIQUE
 CAMPO DI APPLCAZIONE TERMICA

SUPPLY OF ENERGY
 ENERGIEZUFLUSS (VOM VORRAT)
 ALIMENTATION D'ENERGIE
 ALIMENTAZIONE DI ENERGIA

DELIVERY OF ENERGY
 ENERGIEABFLUSS (IN DIE ARBEITSLEITUNG)
 UTILISATION D'ENERGIE
 UTILIZZAZIONE DI ENERGIA

EXHAUST
 ENTLUEFTUNG
 ECHAPPEMENT
 SCARICO

INSPECTION TEST STAMP
 PRUEFSTEMPEL
 MARQUAGE DE CONTROLE
 STAMPIGLIATURA DI COLLAUDO



| | | | | | | | |
|--|--|--------------------------------------|--|-------------------------|--|----------------------------|--|
| GENERAL SPECIFICATION: | | JED-334 | | CADAM-DRAWING COPYRIGHT | | WABCO | |
| FURTHER TECHNICAL DATA: | | | | DATE: 77-09-05 | | SIGNATURE: KLÜCK | |
| DOC. CODE: | | SHEET: TO | | CHECKED: 77-09-06 | | GEIGER | |
| GENERAL TOLERANCES | | | | STANDARDIZATION: | | 77-09-08 SOMMER | |
| CLASS 1) | | RANGE OF NOMINAL DIMENSIONS (± mm) | | MASS | | SCALE | |
| | | ≤ 50 | | 1:1 | | PRODUCT IDENTIFICATION NO. | |
| | | 50 < 180 | | KG | | 463 013 116 0 | |
| | | 180 < 400 | | SIZE | | DOC. CODE | |
| | | 400 < 400 | | A 2 | | 605 | |
| | | ≥ 400 | | T.R.I. | | SHEET | |
| FINE | | ± 0,5 | | 066730 | | 1/1 | |
| MEDIUM | | ± 1,0 | | 4xB | | REPLACEMENT FOR | |
| COARSE | | ± 2,0 | | 98-05-25 | | 884 002 744 0 | |
| | | ± 3,0 | | 022630 | | SHAPE CODE | |
| | | ± 4,0 | | 2xA | | REPLACEMENT FOR | |
| | | ± 5,0 | | 79-07-18 | | 884 002 744 0 | |
| | | ± 6,5 | | DCN-NO. | | REV. | |
| TAPPED HOLES ACC. ISO 4038 / JED-152 | | | | DATE | | | |
| 1) TOLERANCE CLASS APPLIED CROSSMARKED | | | | | | | |

NON E' PERMESSO CONSERVARE A TERZI O RIPRODURRE QUESTO DOCUMENTO, NE UTILIZZARNE IL CONTENUTO O RENDERSI RESPONSABILI PER QUALSIASI DANNI, COSTI O PERDITE, DIRETTI O INDIRETTI, DERIVANTI DA UN'USUA O INDEBITA UTILIZZAZIONE. IL RISPETTO DEI DIRITTI DI PROPRIETA' INTELLETTUALE E' FATTA RISERVA DI TUTTI I DIRITTI DERIVANTI DA BREVETTI O MODELLI.
 COPIING OF THIS DOCUMENT AND ITS CONTENTS, REPRODUCTION OF THE CONTENTS THEREOF, OR THE USE OF THE INFORMATION CONTAINED HEREIN FOR ANY PURPOSES, WITHOUT THE WRITTEN PERMISSION OF WABCO, IS PROHIBITED. WABCO AND ITS LOGO ARE TRADEMARKS OF WABCO. ALL RIGHTS ARE RESERVED IN THE EVENT OF THE GRANT OF PATENT OR REGISTRATION OF A UTILITY MODEL OR DESIGN. THIS DOCUMENT IS THE SUBJECT OF COPYRIGHT.

1009/012/204-83
 605/603