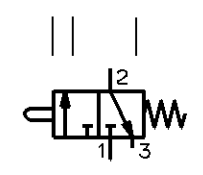
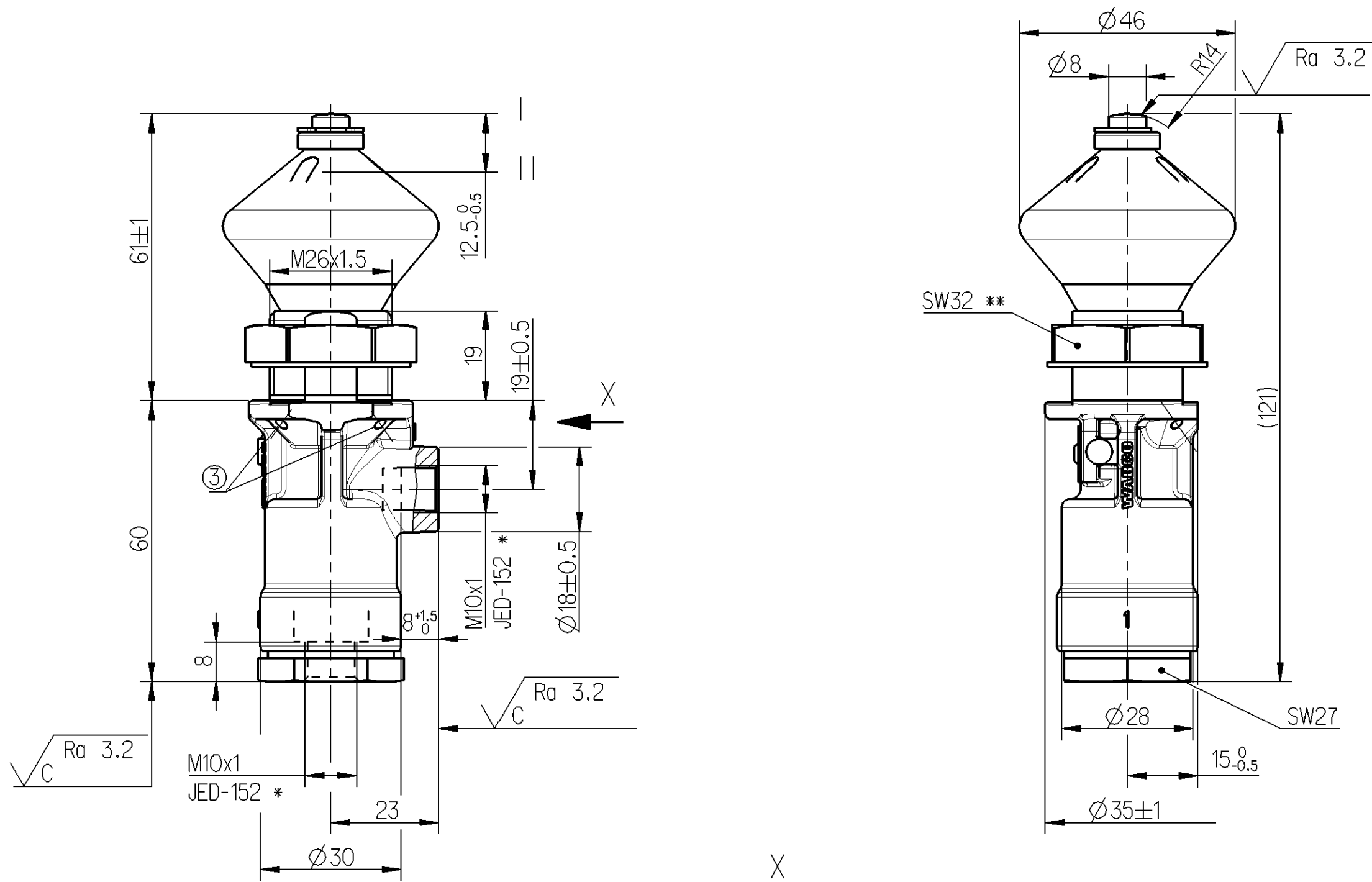


Non è permesso consegnare o terzi o riprodurre questo documento, né utilizzare il contenuto o renderlo comunque noto a terzi.
 E' fatto riserva di tutti i diritti, brevetti o marchi.
 Copying of this document and giving it to others and the use or communication of the contents thereof, are forbidden without express
 permission of the manufacturer. This reservation of copyright and other rights is made in the event of the grant of patent or design. This document is the subject of copyright.

Toute communication ou reproduction de ce document, toute exploitation ou communication de son contenu sont interdites, sauf autorisation expresse.
 Toute réimpression ou autre réimpression ou autre utilisation sans autorisation de WABCO est formellement interdite.
 Weitergabe sowie Vervielfältigung dieses Urteils, Verwertung und Mitteilung ihres Inhalts nicht gestattet, soweit nicht ausdrücklich zugelassen.
 Alle Rechte für den Fall der Patentierung oder Gebrauchsmuster-Eintragung vorbehalten.

- ① INLET
VORRAT
ALIMENTATION
ALIMENTAZIONE
- ② DELIVERY
AUSGESTEUERTE LUFT
UTILISATION
UTILIZZAZIONE
- ③ EXHAUST
ENTLUEFTUNG
ECHAPPEMENT
SCARICO

	*	**
TORQUE ACCORDING TO JED-366 ANZUGSMOMENT ENTSPRECHEND JED-366 COUPLE DE SERRAGE SUIVANT JED-366 COPPIA DI SERRAGGIO SECONDO JED-366	M10x1	M26x1.5 (SW32)
FOR THREAD PERMISSIBLE FUER GEWINDE ZULAESSIG POUR FILETTAGE ADMISE PER FILETTATURA AMMESSA	max. 13 Nm	max. 40 Nm



NOMINAL DIAMETER NENNWEITE DIAMETRE NOMINAL DIAMETRE NOMINALE	4 mm
WORKING PRESSURE BETRIEBSDRUCK PRESSION D'UTILISATION PRESSIONE DI ESERCIZIO	Pe=MAX. 10 bar
THERMAL RANGE OF APPLICATION THERM. ANWENDUNGSBEREICH GAMME D'APPLICATION THERMIQUE CAMPO DI APPLICAZIONE TERMICA	-40°C .. +100°C
OPERATING FORCE AT 7 bar BETAETIGUNGSKRAFT BEI 7 bar EFFORT DE COMMANDE A 7 bar FORZA DI COMANDO PER 7 bar	MAX. 150N
MEDIUM MEDIUM FLUIDE FLUIDO	AIR LUFT AIR ARIA
STROKE LIMIT EXTERNALLY HUBBEGRENZUNG EXTERN LIMITE DE COURSE EXTERNE LIMITAZIONE DI CORSA ESTERNO	
STROKE HUB COURSE CORSIA	12.5 ⁰ / _{-0.5} mm
DIMENSIONS WITHOUT TOLERANCES MASSE OHNE TOLERANZ ANGABE DIMENSIONS NON TOLERANCEES DIMENSIONI NON TOLLERATE	±1.5 mm
POSITION OF INSTALLATION EINBAULAGE POSITION D'INSTALLATION POSIZIONE DI MONTAGGIO	OPTIONAL BELIEBIG AU CHOIX A PIACERE

General Specification: JED-334-0		Copyright WABCO®		WABCO (E)	
Further Technical Data:		Date	Signature	3/2 DIRECTIONAL CONTROL VALVE	
Doc. Code:	Sheet: To	2011-07-19	Wysacki	3/2 WEGEVENTIL	
General Tolerances JED-261		Checked	Molyn	DISTRIBUTEUR 3/2	
Range of Nominal Dimensions (± mm)		Expert	Wysocki	DISTRIBUTORE	
Class 1)	≤ 50	> 50	> 180	> 400	Δ
Fine	0.5	1.0	1.5	2.0	±3°
Medium X	1.0	2.0	3.0	4.0	
Coarse	2.0	3.5	5.0	6.5	
Tapped Holes acc. JED-152		Mass	Scale	Material No.	Date of first issue: 1979-12-17
1) Tolerance Class Applied Crossmarked		0.190 KG	1:1 (2:1)	463 022 021 0	Doc.Code Language Sheet
		Size CAD System	ECN-No.	Revision	Techn. Resp.
		A 2 Pro/E	154100	1 E	5810
		Replacement for		005 ML 1/1	