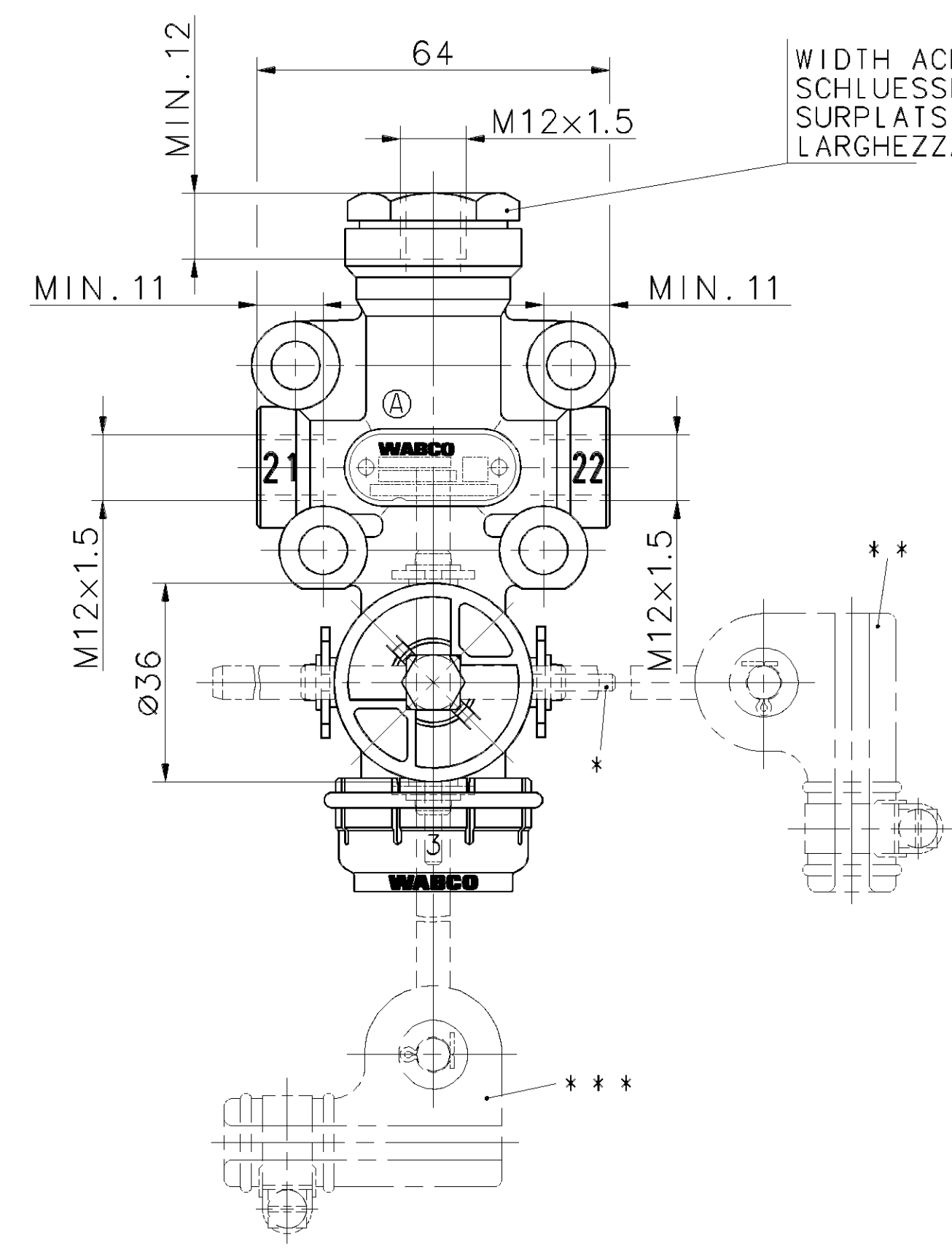
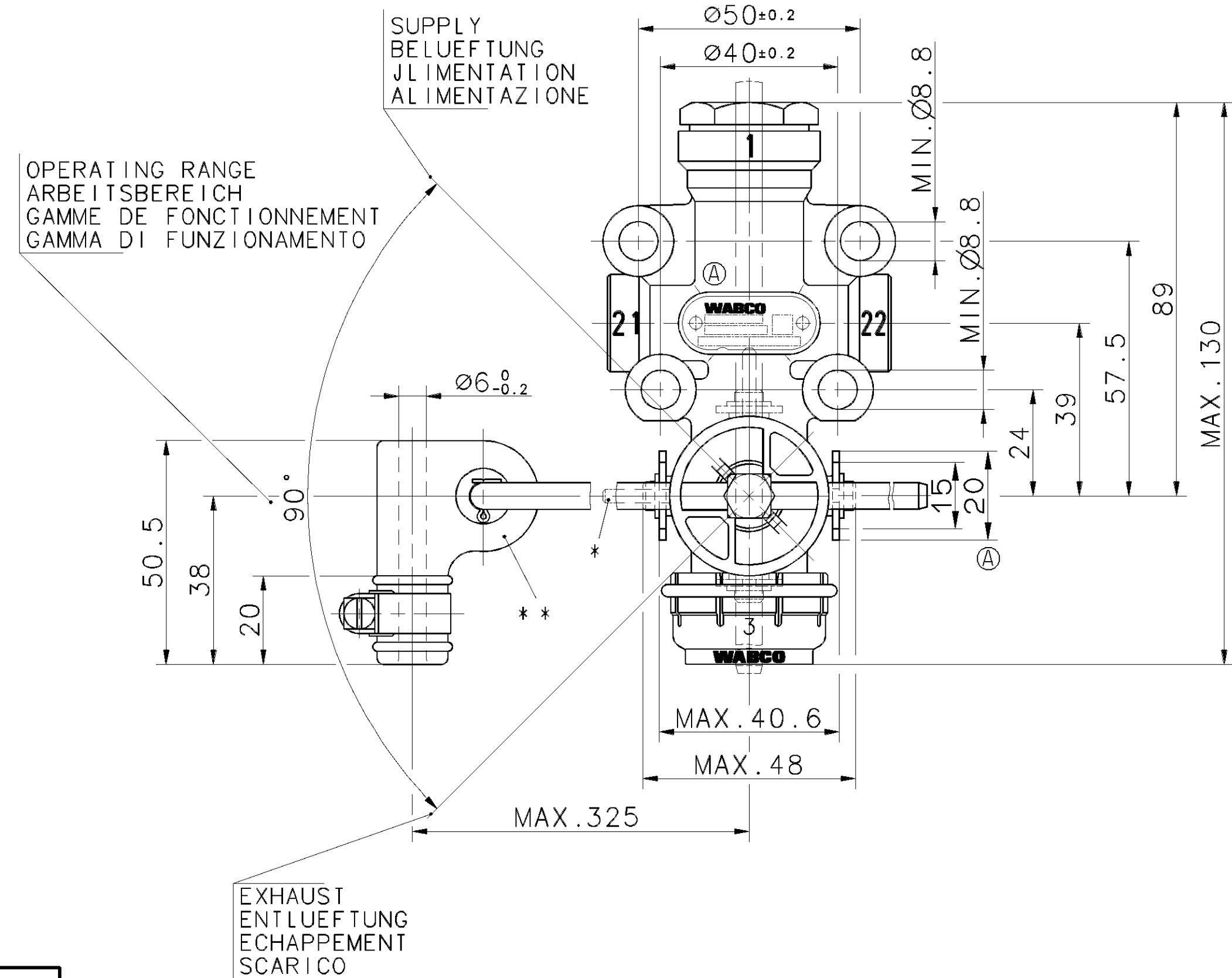


BODY COLOUR BLACK ACC. TO JED-461-1
 GEHÄUSE FARBE SCHWARZ ENTSPRECHEND JED-461-1
 CORPS COULEUR NOIRE SUIVANT JED-461-1
 CORPO COLORE NERO SECONDO JED-461-1



INSTALLATION POSITION : VERTICAL ±45° EXHAUST DOWNWARD
 EINBAULAGE : SENKRECHT ±45° ENTLUEFTUNG NACH UNTEN
 POSITION D'INSTALLATION : VERTICALE ±45° ECHAPPEMENT VERS LE BAS
 POSIZIONE DI MONTAGGIO : VERTICALE ±45° SCARICO VERSO IL BASSO

WORKING MEDIUM : AIR (CONTAINING WATER, DUST AND OIL)
 ARBEITSMEDIUM : LUFT (WASSER-, STAUB- UND OELHALTIG)
 FLUIDE D'UTILISATION : AIR (HUMIDE, HUILEUX,
 FLUIDO DI ESERCIZIO : ARIA (ACQUA, POLVERE E OILU INQUINATO)

AMBIENT ENVIRONMENT : AIR (CONTAINING WATER, DUST AND OIL)
 UMGEBUNGSMEDIUM : LUFT (WASSER-, STAUB- UND OELHALTIG)
 FLUIDE AMBIENT : AIR (HUMIDE, HUILEUX,
 FLUIDO AMBIENTE : ARIA (ACQUA, POLVERE E OILU INQUINATO)

THERMAL RANGE OF APPLICATION UNDER NORMAL AMBIANT CONDITIONS
 THERM. ANWENDUNGSBEREICH UNTER NORMALEN UMGEBUNGSBEDINGUNGEN : -40°...+80°C
 GAMME D'APPLICATION THERMIQUE EN UTILISATION CONTINUE DE
 CAMPO TERMICO D'APPLICAZIONE NELLE NORMALI CONDIZIONI AMBIENTALI

SHORT TERM RESISTANCE TO HEAT :
 KURZZEITIGE WAERMEBESTAENDIGKEIT : max. 1h AT 110°C
 RESISTANCE THERMIQUE TEMPORAIRE :
 RESISTANZA TERMICA PER BREVE PERIODO :

RESERVOIR PRESSURE :
 VORRATSDRUCK : max. P_e = 13bar
 PRESSION DANS LE RESERVOIR :
 PRESSIONE DEL SEBRATOIO :

DYNAMIC BELLOWS PRESSURE :
 DYNAMISCHER BALGDRUCK : max. P_e = 15bar
 PRESSION DYNAMIQUE DE COUSSIN D'AIR :
 PRESSIONE DINAMICA DEL SOFFIETTI :

NOMINAL DIAMETER : PER DELIVERY
 NENNWEITE : min. 7.1mm² Ø3mm JE ARBEITSLEITUNG
 DIAMETRE NOMINAL : PAR UTILISATION
 DIAMETRO NOMINALE : PER MANDATA

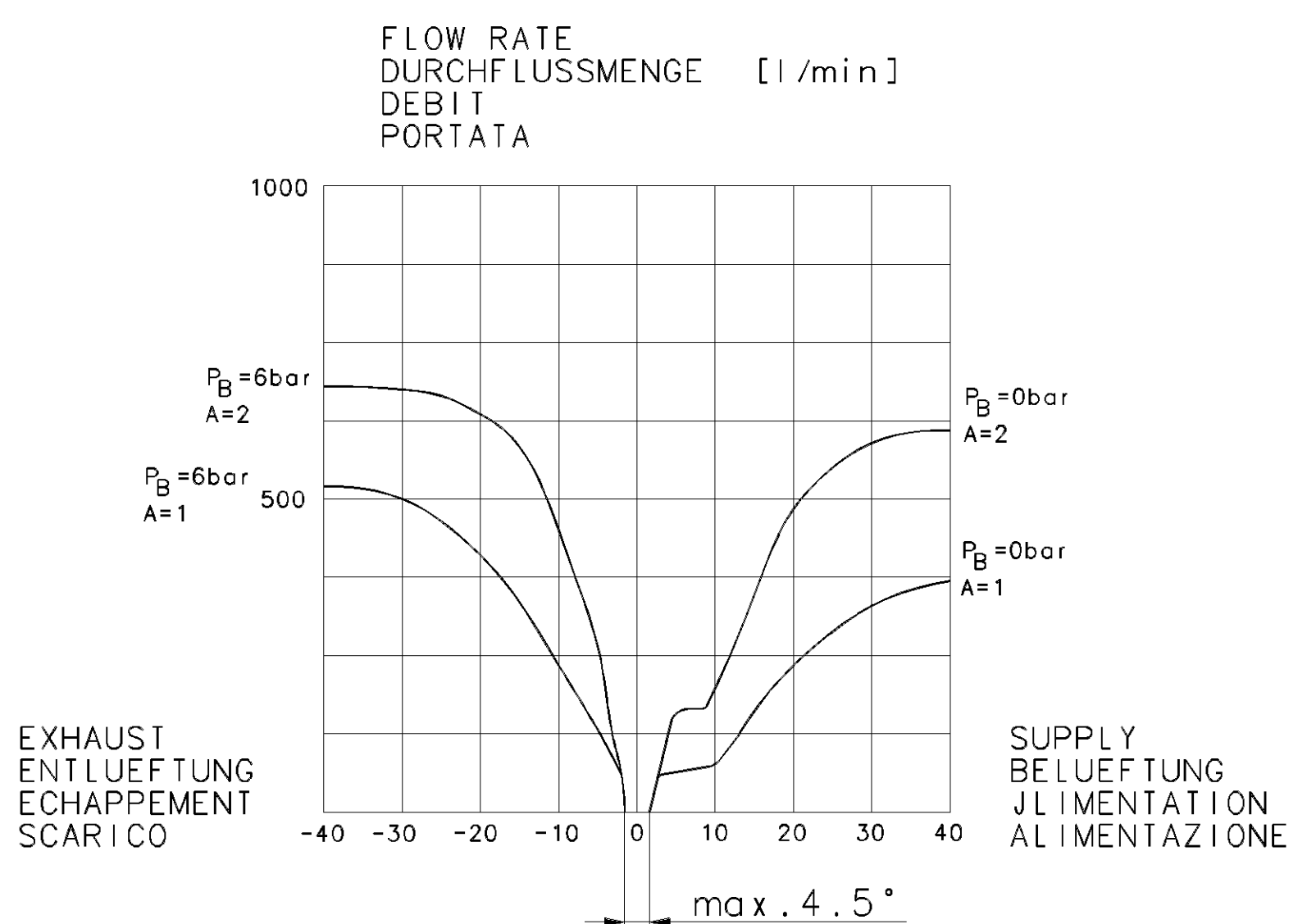
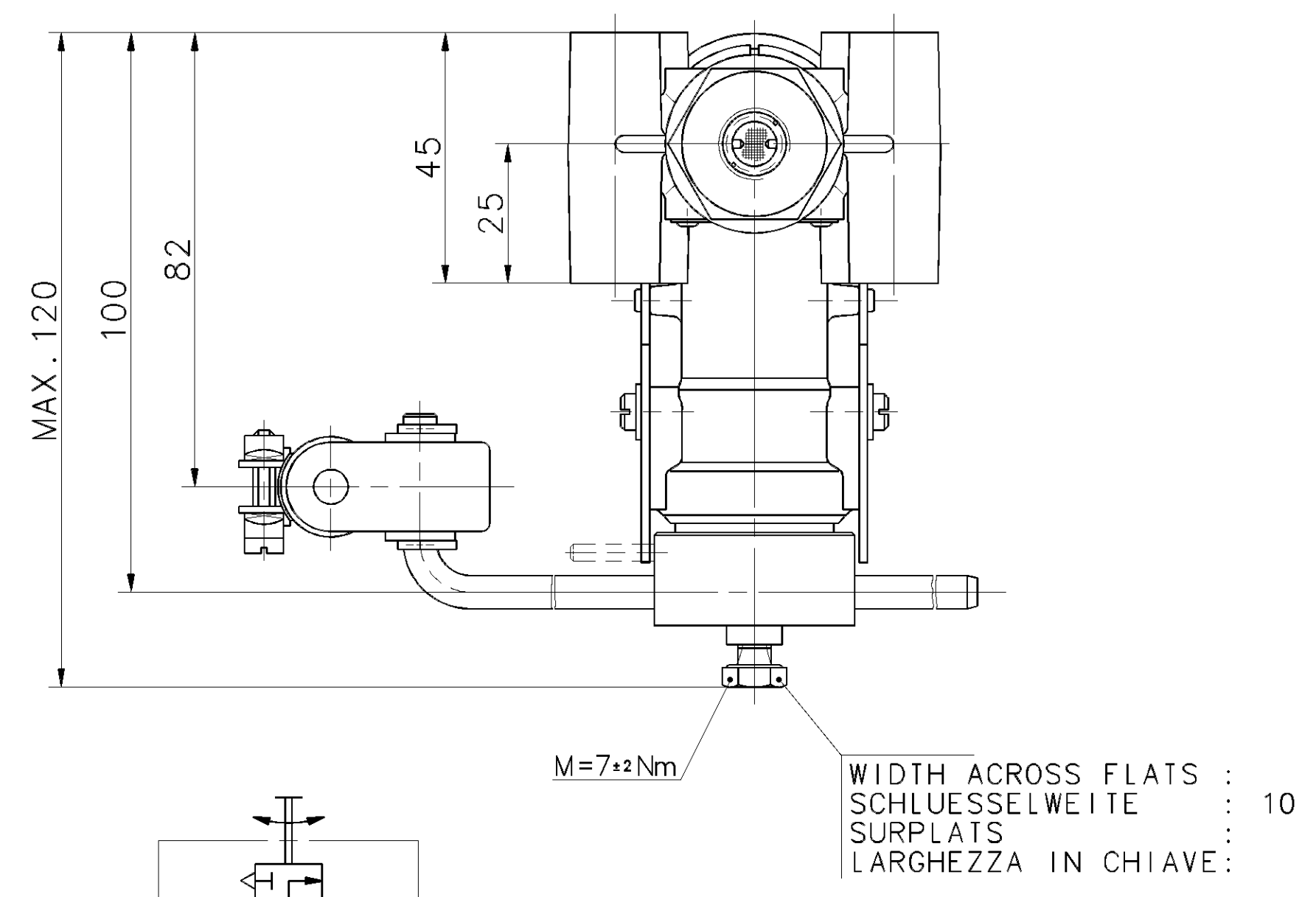
** INSTALLATION POSITION : VERTICAL
 EINBAULAGE : SENKRECHT
 POSITION D'INSTALLATION : VERTICALE
 POSIZIONE DI MONTAGGIO : VERTICALE

*** INSTALLATION POSITION : HORIZONTAL
 EINBAULAGE : WAAGERECHT
 POSITION D'INSTALLATION : HORIZONTAL
 POSIZIONE DI MONTAGGIO : ORIZZONTALE

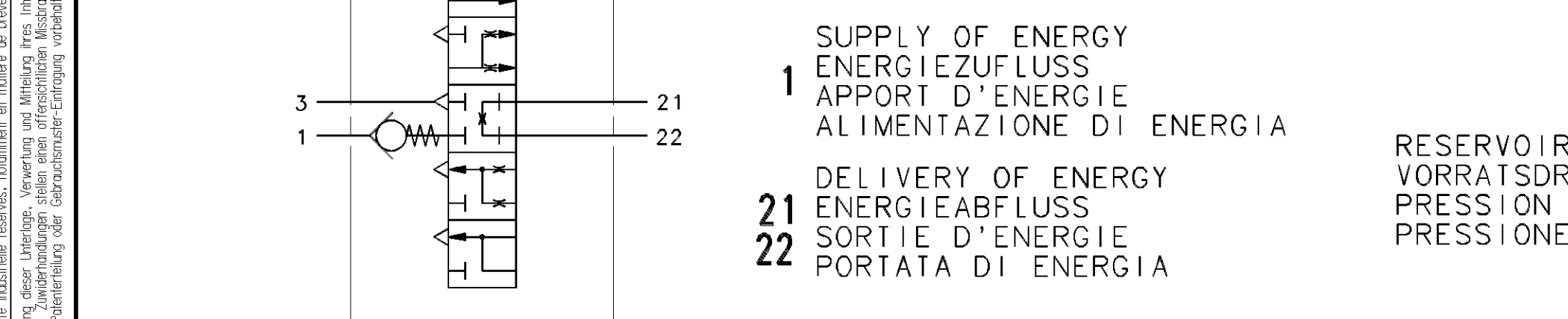
ORIENTATION OF THE VALVE ON FOUR SIDES POSSIBLE,
 TURN RESP. CHANGE LEVER
 ANLENKUNG DES VENTILS VIERSEITIG MOEGLICH,
 STANGE DEMENTSPRECHEND UMSCHWENKEN BZW. UMSTECKEN
 LIAISON SUR LA VALVE POSSIBLE DES QUATRE COTES,
 ORIENTER LA BARRE EN TOURNANT CONFORMENT
 ACCOPPIAMENTO DELLA VALVOLA POSSIBILE DALLE QUATRO,
 PATI PER ORIENTARE LA LEVA GIRARE CONFORME

* OBSERVE THE POSITION OF THE POSITIONING PIN BORE
 LAGE DER FIXIERSTIFTBOHRUNG BEACHTEN
 OBSERVER LA POSITION DE L'ALEPAGE POUR LA GOUPILLE D'AJUSTAGE
 OSSERVARE LA POSIZIONE DI FORO PER IL PERNO DI FISSAGGIO

FIXING OF THE VALVE IN CLOSED POSITION AT ≥7bar RESERVOIR PRESSURE AND ≤3bar
 PRESSURE IN THE BELLOW BY A PIN OF Ø3h8 OR A PARALLEL PIN Ø3h8x24 DIN7
 FIXIERUNG DES VENTILES IN ABSCHLUSSSTELLUNG BEI ≥7bar VORRATSDRUCK UND ≤3bar
 BALGDRUCK MITTELS DORN Ø3h8 ODER ZYL.-STIFT Ø3h8x24 DIN7
 FIXATION DE LA VALVE EN POSITION FERMEE SOUS ≥7bar PRESSION DANS LE RESERVOIR
 ET ≤3bar DANS LE COUSSIN PAR UN TIGE DE Ø3h8 OU UNE GOUPILLE CYLINDRIQUE
 Ø3h8x24 DIN7
 FISSAGGIO DELLA VALVOLA IN POSIZIONE CHIUSO PER ≥7bar PRESSIONE NEL SEBRATOIO
 E ≤3bar PRESSIONE NEL SOFFIETTO PER UNA SPINA DI Ø3h8 O UNA SPINA CILINDRICA
 Ø3h8x24 DIN7



DEFLECTION OF LEVER AT OPENING
 HEBELAULENKUNG AB OEFFNUNGSBEGINN [°]
 DEBATTEMENT DU LEVIER A L'OUVERTURE
 DEVIAZIONE DELLA LEVA ALLA APERATURA



General Specifications: JED-334-1, Size ISO 14405 LP		Copyright WABCO®	
Further Technical Data:		Date	Signature
Doc. Code:	Sheet: To	2017-10-12	Bolago
General Tolerances JED-261		Checked	Zak
Range of Nominal Dimensions (± mm)		Expert	Zak
Class 1)	≤ 50 > 50 > 180 > 400	Mass	Scale
Fine	0.5 1.0 1.5 2.0	0.41	1:1
Medium	1.0 2.0 3.0 4.0	Size	CAD System
Coarse	2.0 3.5 5.0 6.5	A 1	CADAM
Tapped Holes acc. JED-192		ECN No.	Revision
1) Tolerance Class Applied Crossmarked		173975	3 x A
Material No.		464 006 012 7	Date of first issue: 2014-10-24
Doc. Code		005	Language: ML
Sheet		1/1	Replaced for

Non è permesso copiare o riprodurre questo documento, né utilizzare il contenuto o i dati contenuti in esso, senza permesso scritto dalla WABCO. Il presente documento è proprietà intellettuale della WABCO. È vietata espressamente la ristampa o l'uso non autorizzato. Toute réimpression ou utilisation non autorisée sans la permission écrite de la WABCO est formellement interdite. Toute réimpression ou utilisation non autorisée sans la permission écrite de la WABCO est formellement interdite. All rights reserved. No part of this document may be reproduced, stored in a retrieval system, or transmitted, in any form or by any means, electronic, mechanical, photocopying, recording, or otherwise, without the prior written permission of WABCO.