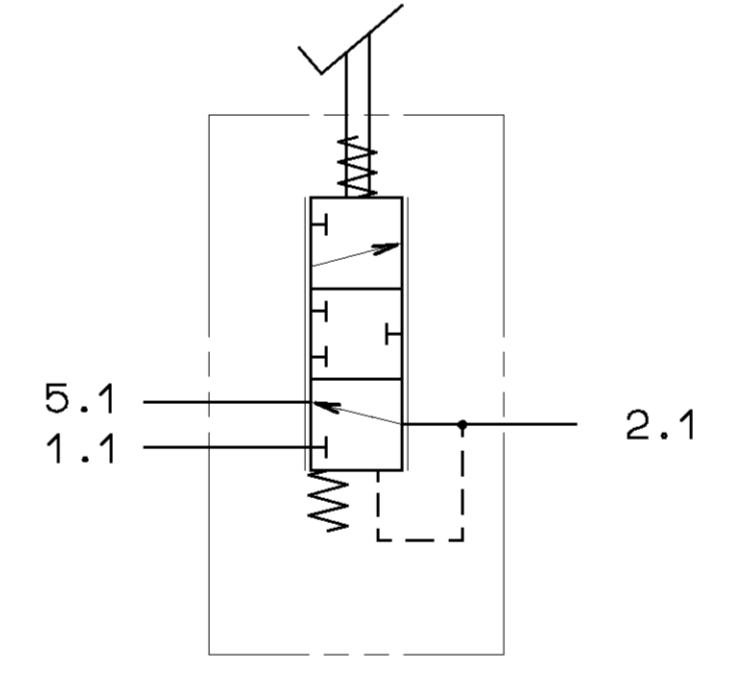
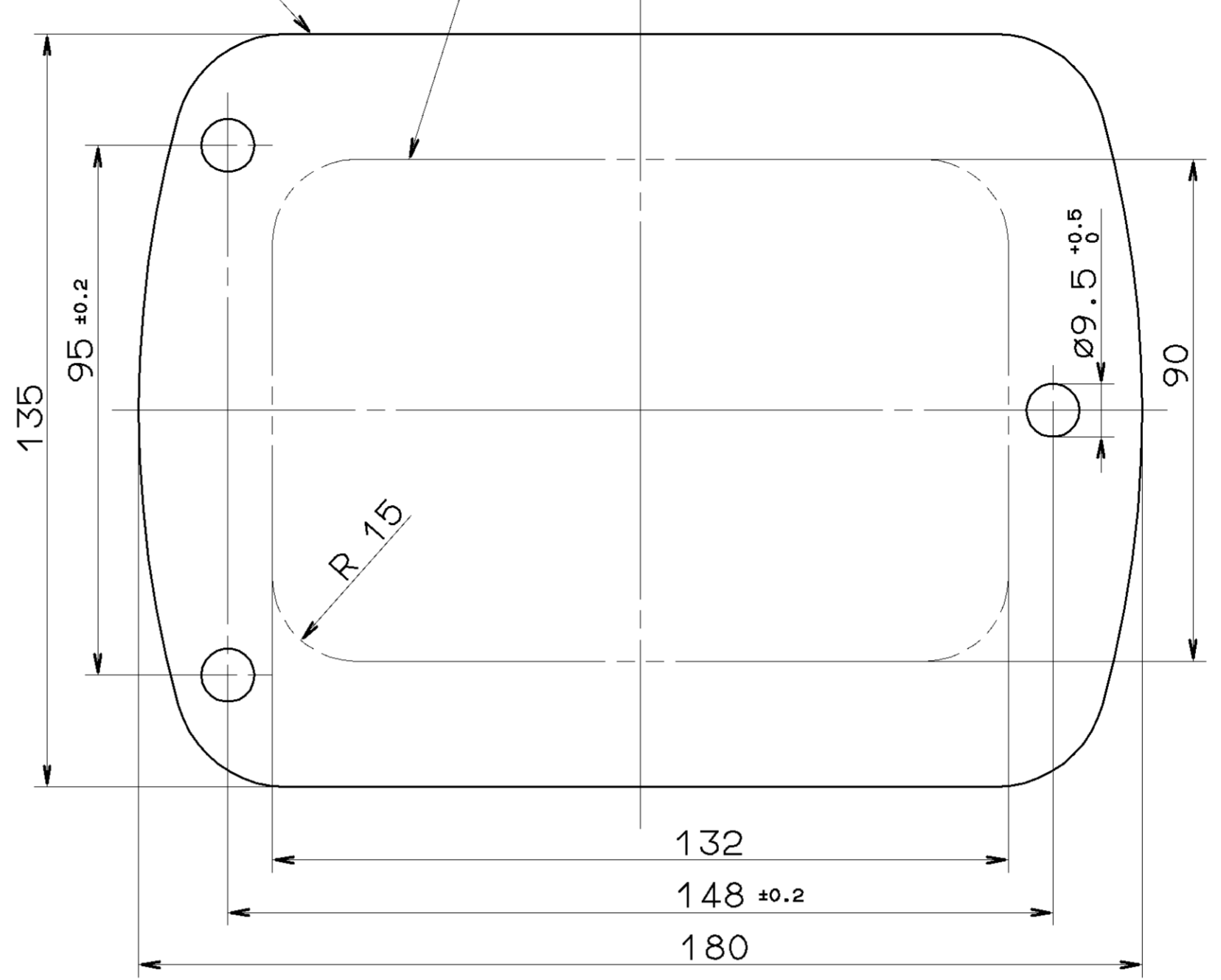


BRACKET
TRAEGERPLATTE
SUPPORT
SUPPORTO

BASE PLATE PANEL OPENING
BODENBLECH EINBAUOEFFNUNG
PLAQUE DE BASE PERCEMENT DU TABLEAU DE BORD
PIASTRA DI BASE FORO DEL PANNELLO



TECHNICAL DATA
TECHNISCHE DATEN
CARACTERISTIQUES TECHNIQUES
CARATTERISTICHE TECNICHE

WORKING MEDIUM: MINERAL OIL, 10 UP TO 2000mm²/s
BETRIEBSMEDIUM: MINERALOEL, 2000 BIS 10 mm²/s
FLUIDE: HUILE MINERALE, 2000 A 10mm²/s
FLUIDO DI ESERCIZIO: OLIO MINERALE, 2000 A 10mm²/s

TEMPERATUR OF MEDIUM:
DRUCKMITTELTEMPERATUR: -30° ... 80° C
TEMPERATURE DU FLUIDE:
TEMPERATURA DEL FLUIDO:

AMBIENT TEMPERATURE:
UMGEBUNGSTEMPERATUR: -30° ... 80° C
TEMPERATURE AMBIANT:
TEMPERATURA AMBIENTE:

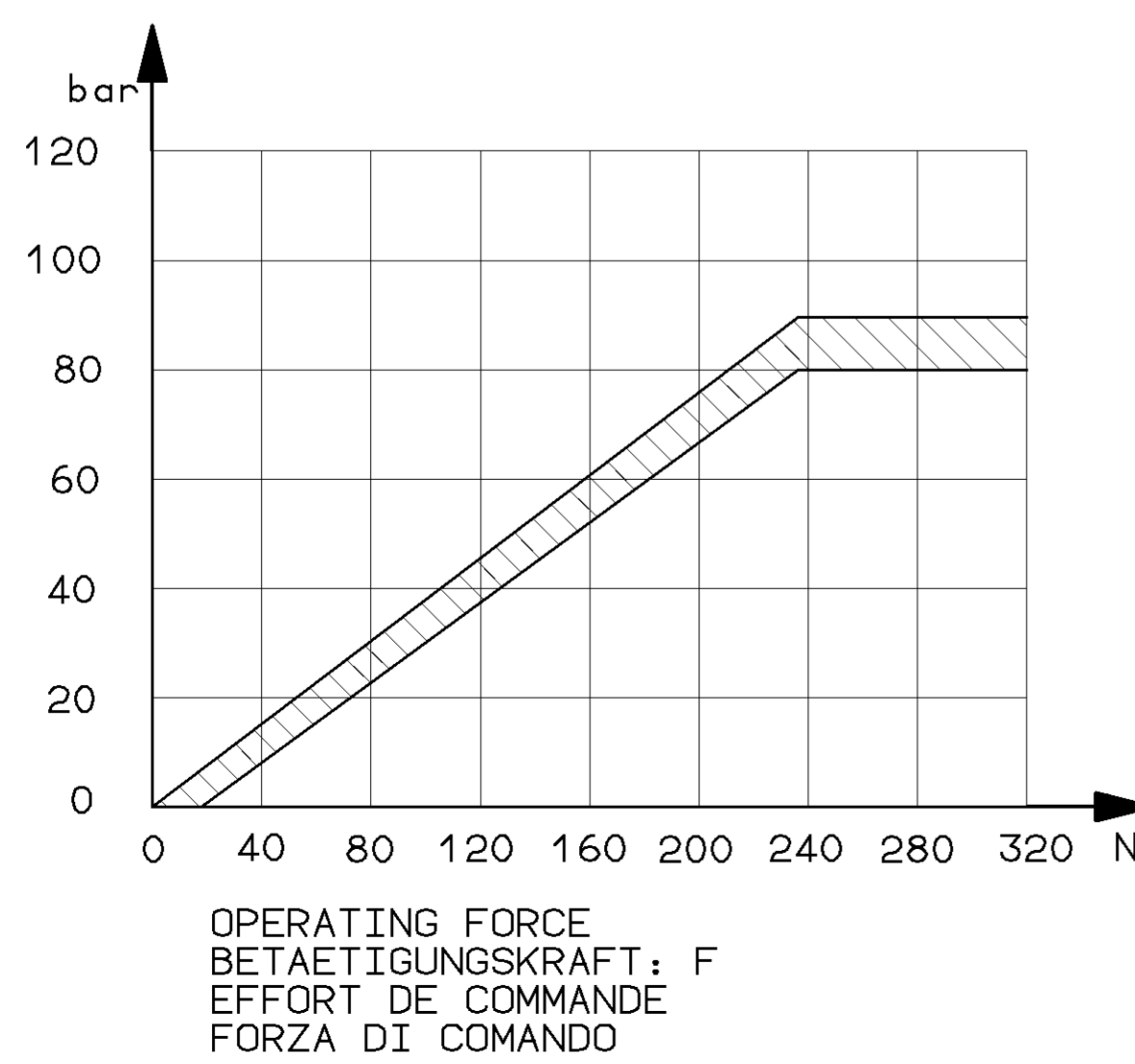
INSTALLATION POSITION: OPTIONAL
EINBAULAGE; BELIEBIG
POSITION D' INSTALLATION: AU CHOIX
POSIZIONE DI MONTAGGIO: A PIACERE

WORKING PRESSURE:
BETRIEBSDRUCK: 150 bar
PRESSION D' UTILISATION:
PRESSIONE DI ESERCIZIO:

PAINTING: BLACK SYNTHETIC RESIN VARNISH RAL9005
PORTS AND HOLES FREE OF PAINT
FARBANSTRICH: KUNSTHARZ-DECKLACK SCHWARZ RAL9005
ANCHLUESSE UND BOHRUNGEN FARBFREI
PEINTURE: VERNIS SYNTHETIQUE NOIR RAL 9005
ORIFICES ET TROUS SANS PEINTURE
VERNICATURA: VERNICE SINTETICA MERA RAL 9005
ORIFIZI ET FORI SENZA VERNICE

PRESSURE LIMITATION:
DRUCKBEGRENZUNG: 80±0 bar
LIMITATION DE PRESSION:
LIMITAZIONE DI PRESSIONE:

PRESSURE AT THE RETURN PORT:
GEGENDRUCK AM RUECKLAUFANSCHLUSS: MAX. 5 bar
PRESSION AU ORIFICE DE RETOUR:
PRESSIONE A ORIFIZIO DI RITORNO:



MARKING OF THE PORTS
KENNZEICHNUNG DER ANSCHLUESSE
DISTINCTIVE DES ORIFICES
DISTINTIVE DEGLI ORIFIZI

1.1 HYDRAULIC ACCUMULATOR
HYDRAULIKSPEICHER
ACCUMULATEUR DE PRESSION
ACCUMULATORE

2.1 SERVO BRAKE
BETRIEBSBREMSE
FREIN DE SERVICE
FRENO DI SERVIZIO

5.1 RETURN PORT
RUECKLAUFANSCHLUSS
ORIFICE DE RETOUR
ORIFIZIO DI RITORNO

TORQUE
ANZUGSMOMENT
COUPLE DE SERRAGE
COPPIA DE SERRAGGIO

M14x1.5: 35±5 Nm

BRAKING PRESSURE
BREMSDRUCK
PRESSION DE FREINAGE
PRESSIONE DI FRENATURA

GENERAL SPECIFICATION: JED-034	
FURTHER TECHNICAL DATA:	
DOC. CODE:	SHEET: TO
GENERAL TOLERANCES	
RANGE OF NOMINAL DIMENSIONS (± mm)	
CLASS	1)
0.5	1.0
1.0	1.5
1.5	2.0
2.0	3.0
3.0	4.0
4.0	5.0
5.0	6.5
TAPPED HOLES ACC. ISO 4039 / JED-162	
1) TOLERANCE CLASS APPLIED CROSSMARKED	

DATE	SIGNATURE
92-12-14	HEINRICH
CHECKED:	ALTMPEPPEN
STANDARDIZATION:	PANTZER
DATE	93-05-25
REV.	11
DATE	92-12-14
EXPERT CODE	71017

WABCO	
BRAKE VALVE BREMSVENTIL ROBINET DE FREINAGE DISTRIBUTORE DI COMANDO	
DOC. CODE	605
SHEET	1/1
REPLACEMENT FOR	467 406 102 0
DATE	92-02-23
PRODUCT TYPE	012