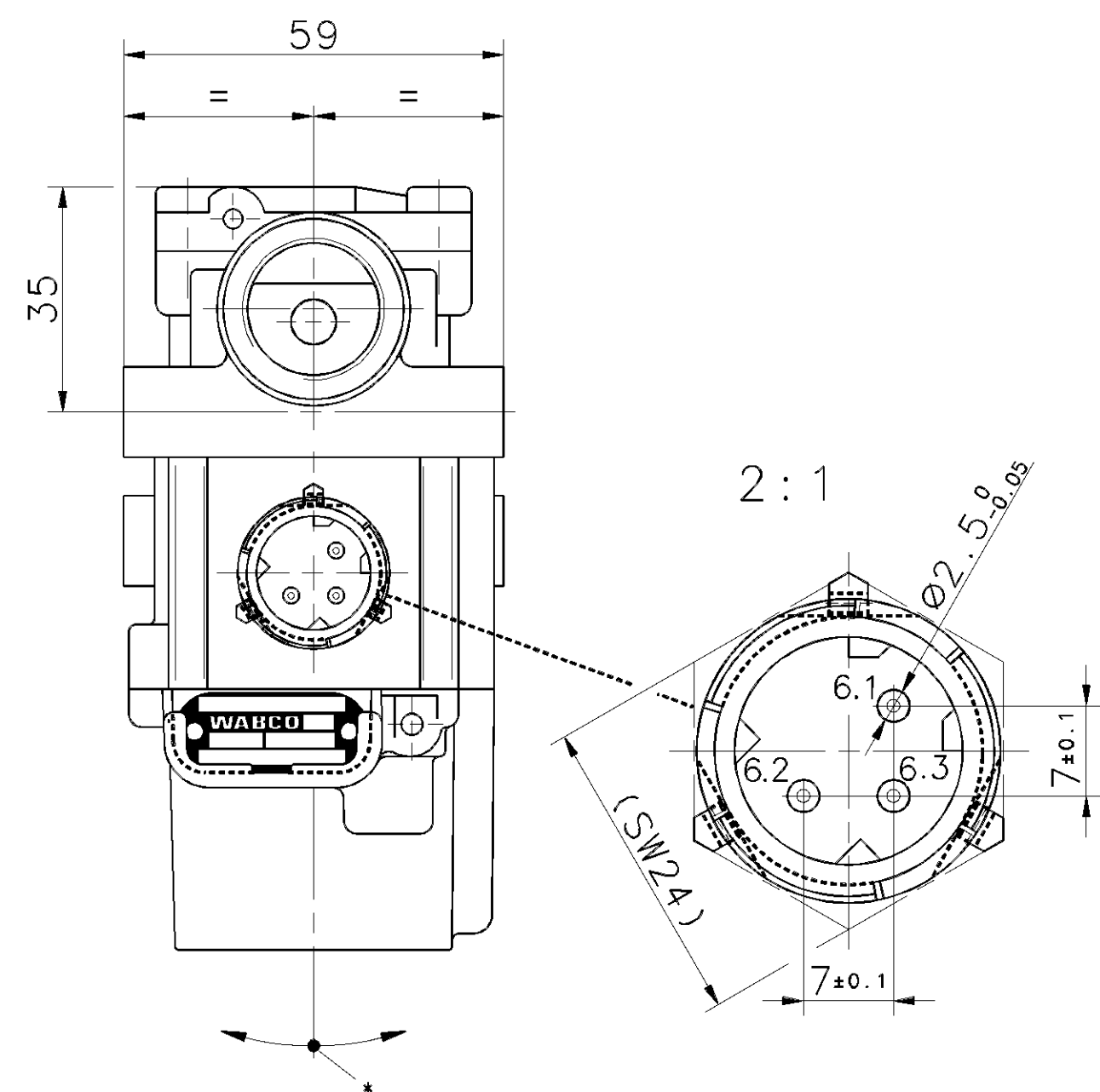


SOCKET	}	894 590 154 2 [DOC.653]
GERÄTESTECKDOSE		
PRISE DE COURANT		
PRESA DI CORRENTE		



ELECTRICAL CONTROL
ELEKTRISCHER STEUERANSCHLUSS
COMMANDE ELECTRIQUE
COMANDO ELETTRICO

} DIN 72585-A1-3.1-Sn/K1

THE VALVE CORRESPONDS TO THE REGULATIONS FOR ELECTROMAGNETIC DEVICES ACCORDING TO VDE 0580
DAS GERAET ENTSPRICHT DEN BESTIMMUNGEN FUER ELEKTROMAGNETISCHE GERAETE NACH VDE 0580
LA VALVE CORRESPOND AUX CONDITIONS POUR DES APPAREILS ELECTROMAGNETIQUES SUIVANT VDE 0580
LA VALVOLA CORRISPONDE ALLE CONDIZIONI PER APPARECCHI ELETROMAGNETICI SECONDO VDE 0580

MEDIUM } AIR
MEDIUM } LUFT
FLUIDE } AIR
FLUIDO } ARIA

NOMINAL VOLTAGE	}	$U_N = 24 \text{ V DC}$
NENNSPANNUNG		
VOLTAGE NOMINAL		
VOLTAGGIO NOMINALE		

SERVICE CONDITION	}	DISCONTINUOUS SERVICE	ED 20% / 5min
BETRIEBSART		AUSSETZBETRIEB	
CONDITION DU SERVICE		SERVICE DISCONTINUE	
CONDIZIONE DI SERVIZIO		ESERCIZIO DISCONTIN	

NOMINAL CURRENT
NENNSTROM
COURANT NOMINAL
CORRENTE NOMINALE

} $I_N \leq 1.65 \text{ A}$

TYPE OF PROTECTION	}	IP 69 K DIN 40050 Bl.9
SCHUTZART		
MODE DE PROTECTION		
TIPO DI PROTEZIONE		

PROTECTION CLASS	}	III VDE 0580
SCHUTZKLASSE		
CLASSE DE PROTECTION		
CLASSE DI PROTEZIONE		

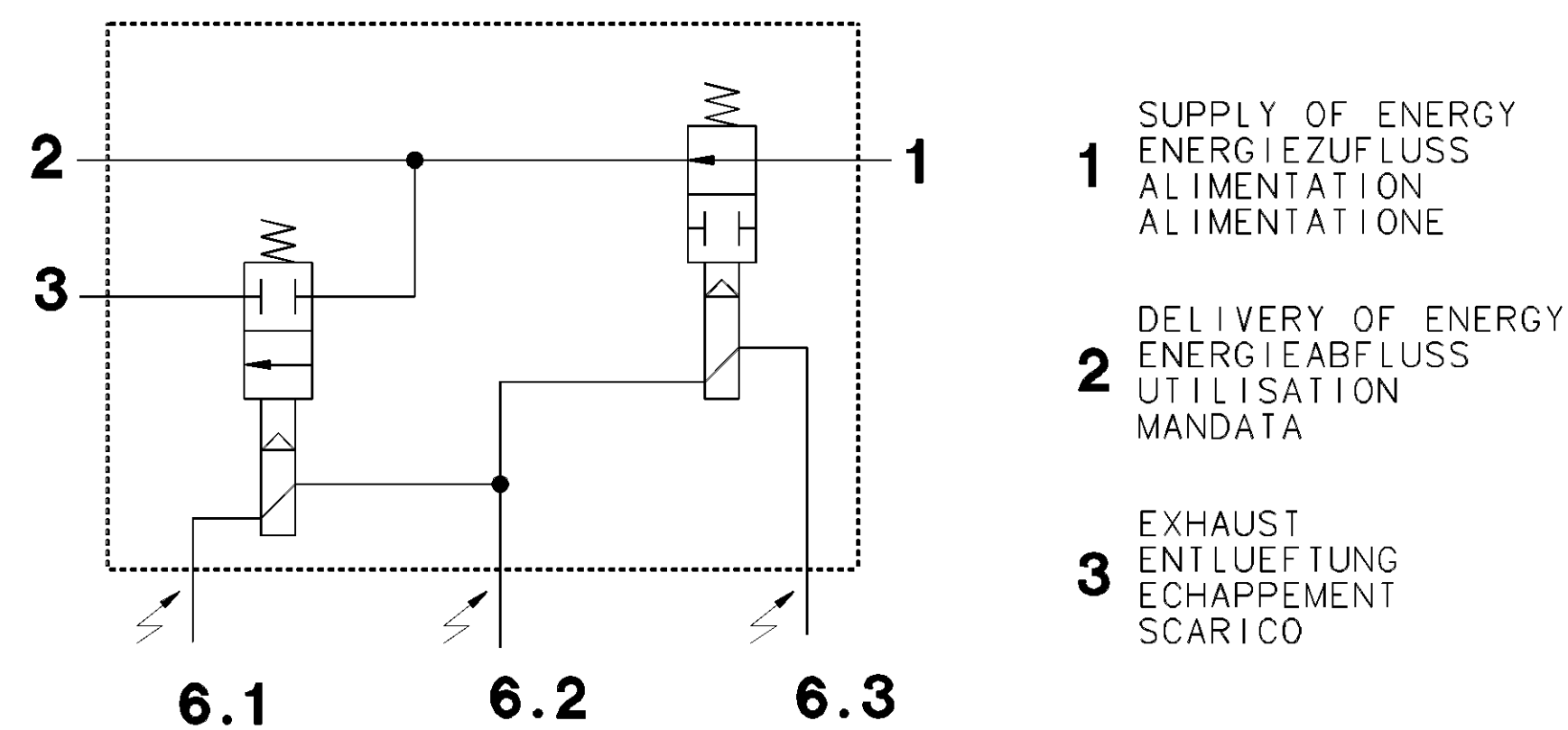
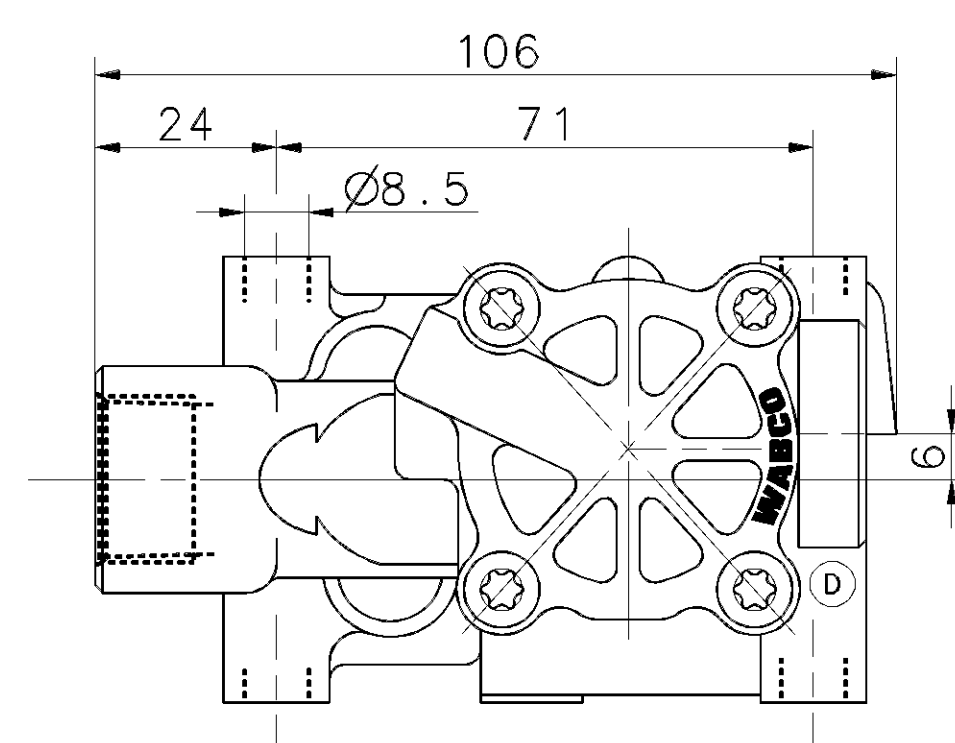
WORKING PRESSURE
BETRIEBSDRUCK
PRESSION D'UTILISATION
PRESSION DI ESERCIZIO

} $p_e = \text{MAX. } 13 \text{ bar}$

THERMAL RANGE OF APPLICATION
 THERMISCHER ANWENDUNGSBEREICH
 GAMME D'APPLICATION THERMIQUE
 CAMPO DI APPLICAZIONE TERMICA

} -40°C....+80°C

* ADMISSIBLE INSTALLATION POSITION
ZULAESSIGE EINBAULAGE
POSITION D'INSTALLATION ADMISE
POSIZIONE DI MONTAGGIO AMMESSA } $\pm 30^\circ$



ELECTRICAL CONTROL (SOLENOID)
ELEKTRISCHER STEUERANSCHLUSS (MAGNET)
COMMANDE ELECTRIQUE (AIMANT)
COMMANDO ELETTRICO (MAGNETE)

6.1 EXHAUST SOLENOID
AUSLASSMAGNET
AIMANT D'ÉCHAPPEMENT
MAGNETE DI SCARICO

6.2 GROUND
MASSE
MASSE
MASSA

6.3 INLET SOLENOID
EINLASSMAGNET
AIMANT D'ADMISSION
MAGNETE D'IMMISSIONE

FOR FURTHER TECHNICAL DATA SEE PRODUCT SPECIFICATION
WEITERE TECHNISCHE DATEN SIEHE PRODUKT SPEZIFIKATION
POUR AUTRES DONNEES TECHNIQUES VOIR PRODUIT SPECIFICATION
PER ULTERIORI DATI TECNICI VEDERE SPECIFICA DI PRODOTTO

472 195 018 0
(CODE 435)

[illegible]

H