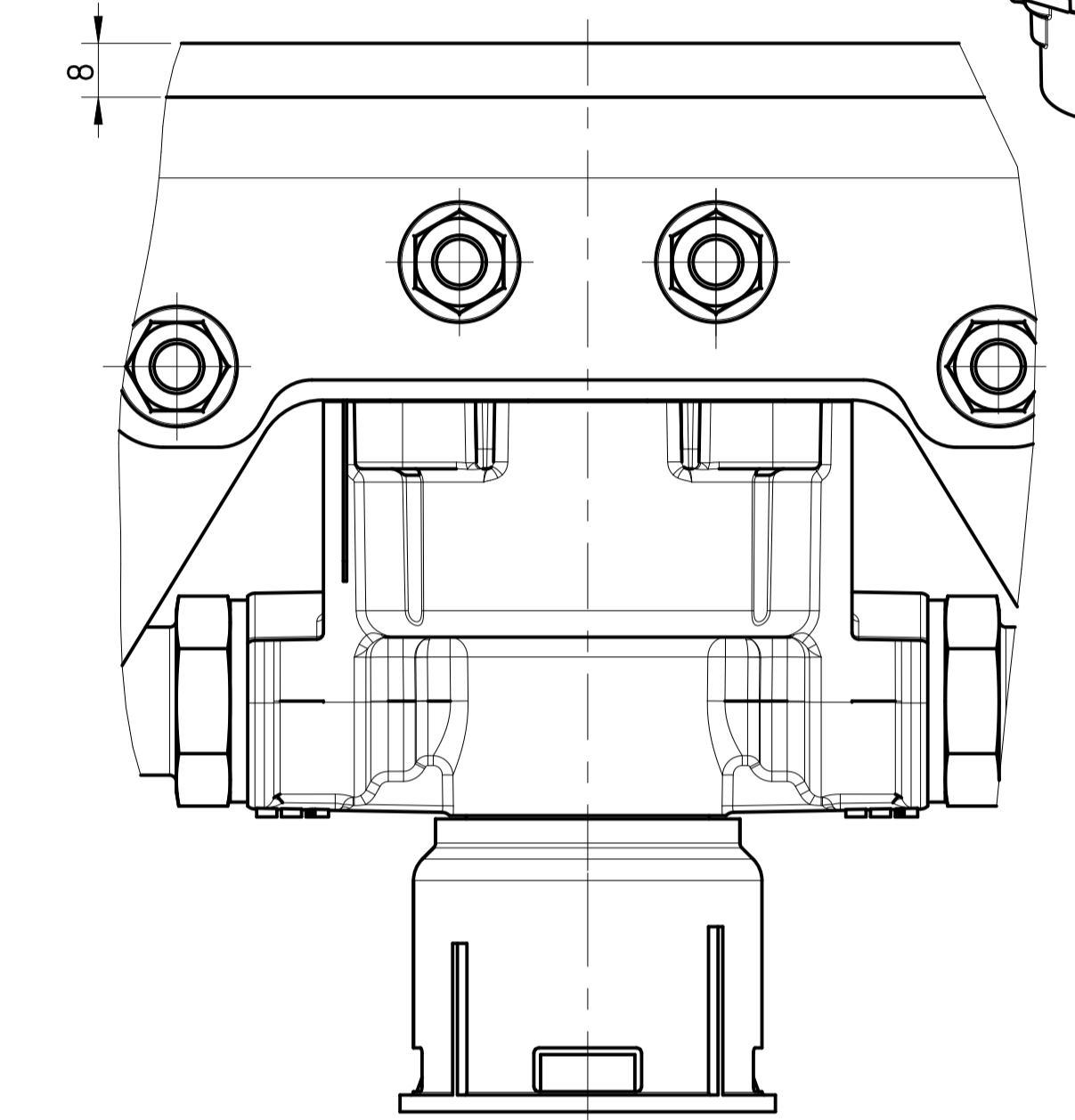
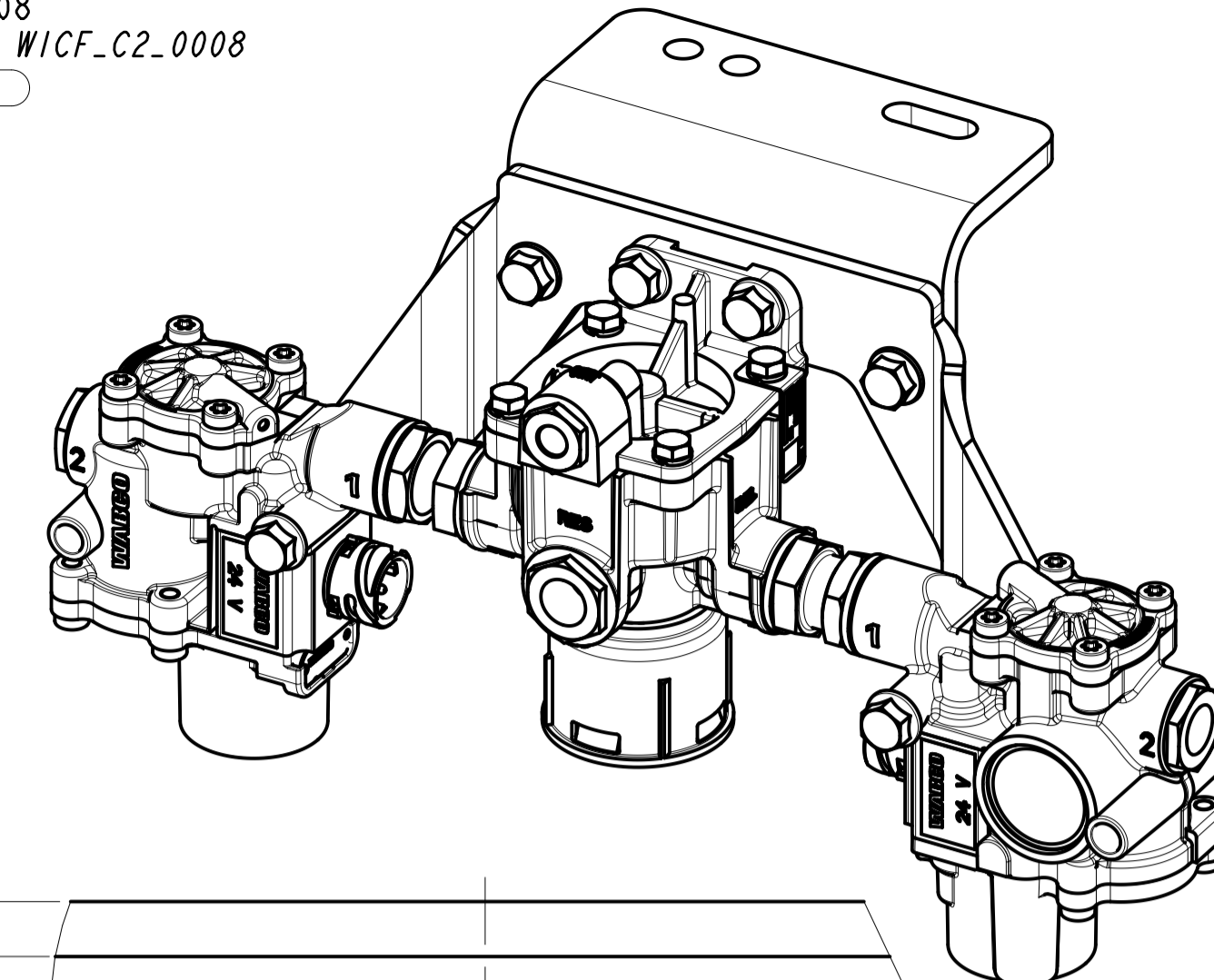
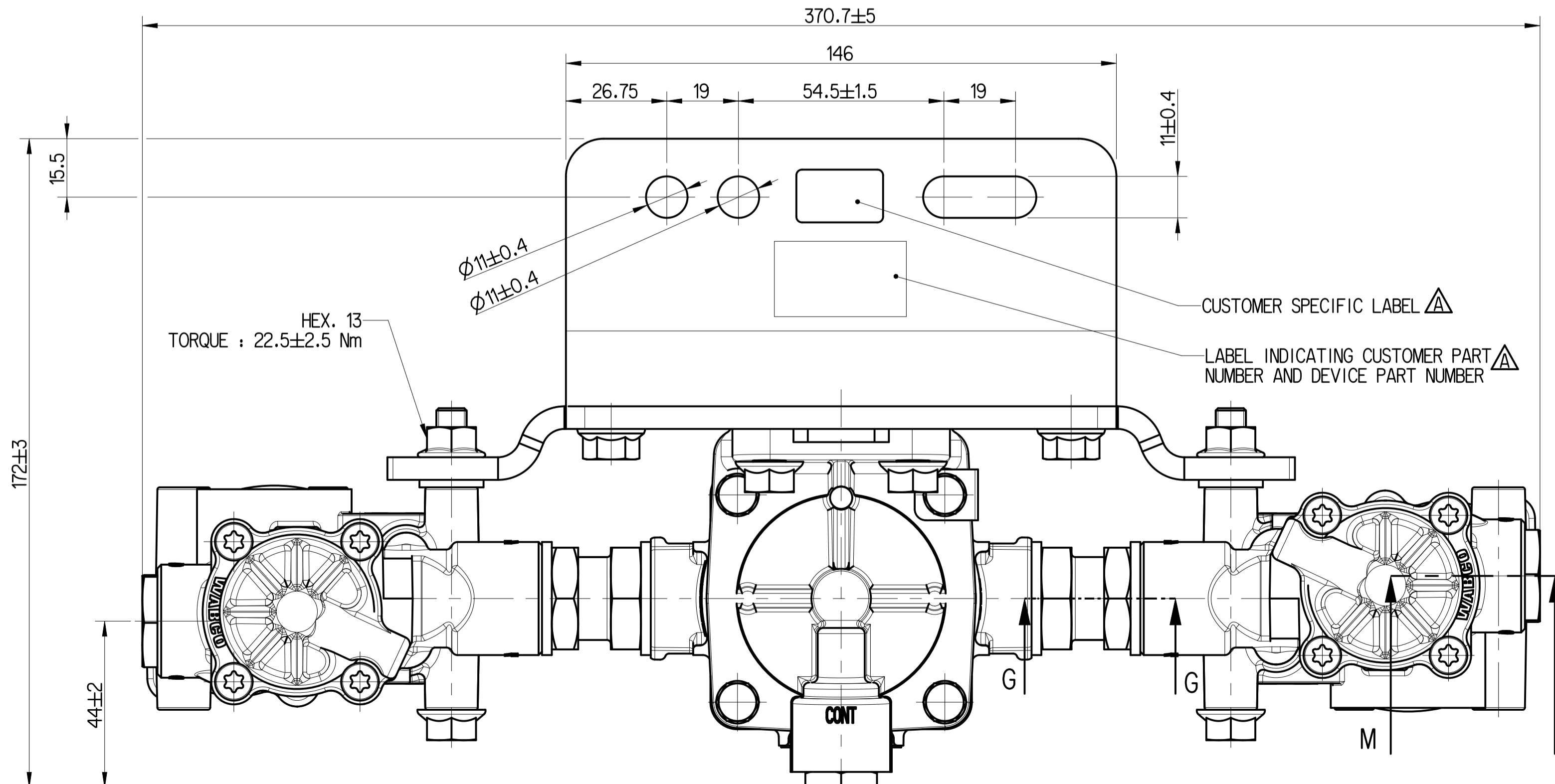
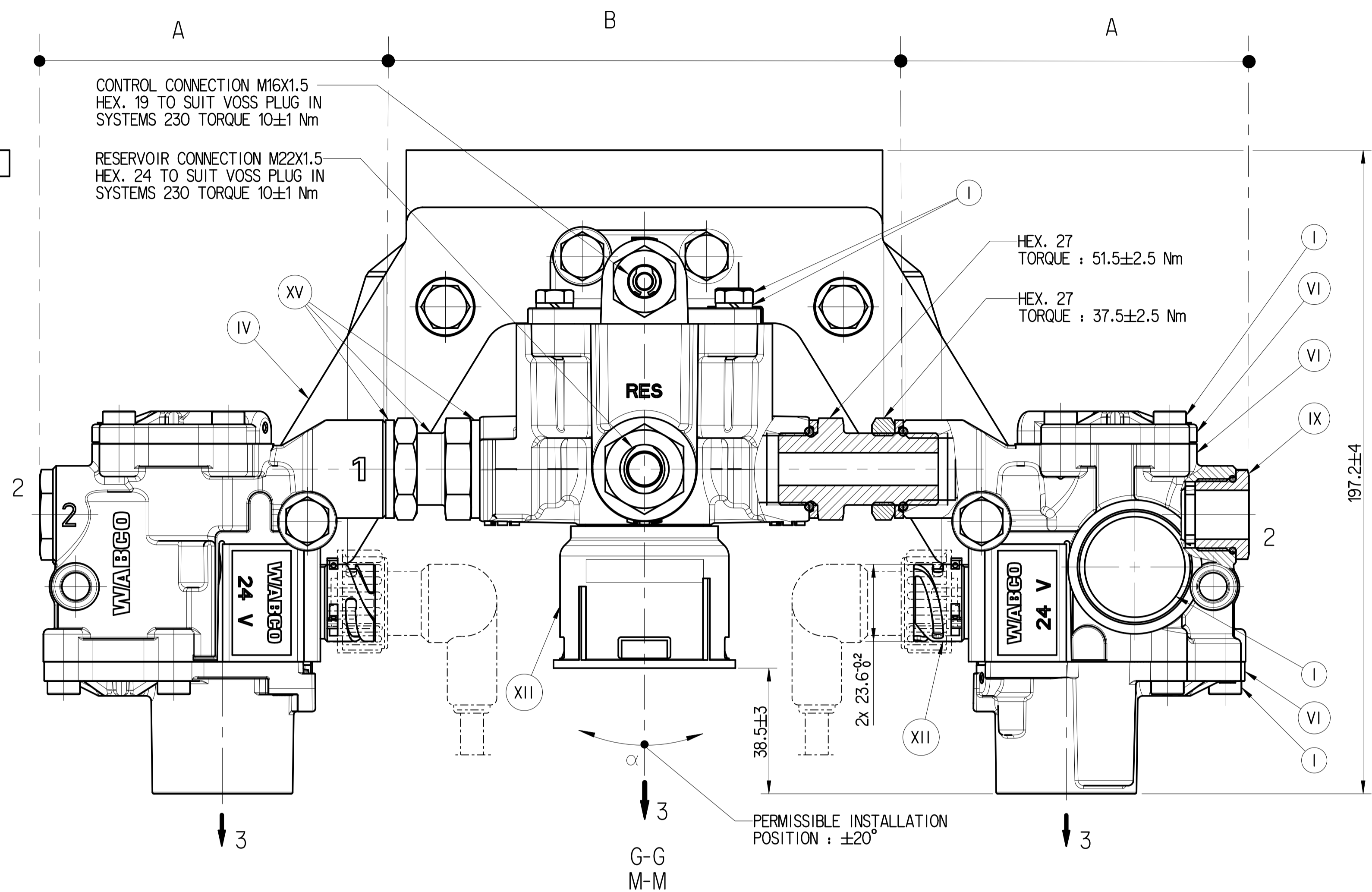
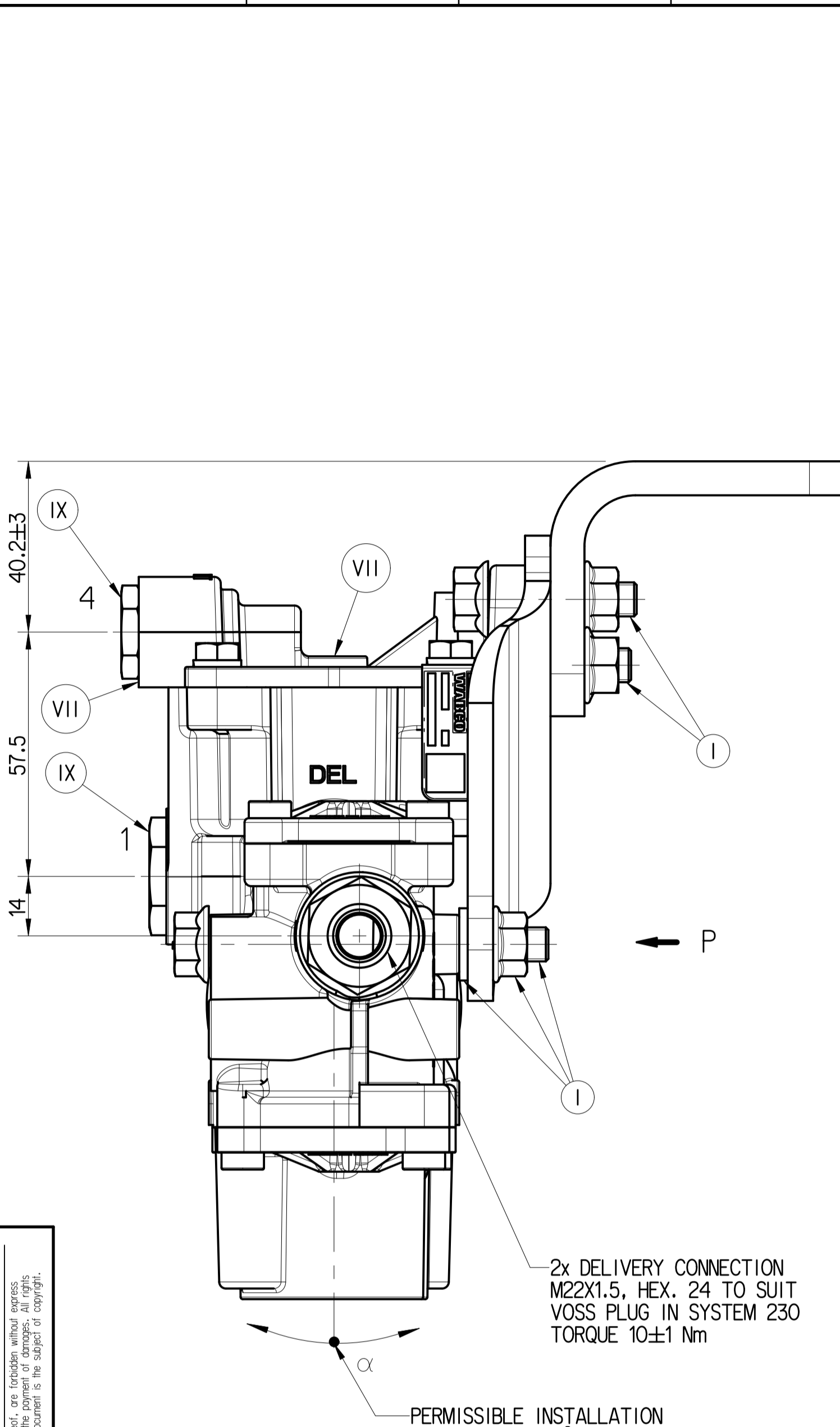


Merkmale nach WICF_C2_0008
 Characteristics acc. to WICF_C2_0008
 C 0(0) S 0(0)



VIEW P



| S.No. | TECHNICAL DATA | |
|-------|---|----------------|
| 1 | WORKING MEDIUM | AIR |
| 2 | MAXIMUM WORKING PRESSURE | 10 bar |
| 3 | THERMAL RANGE OF APPLICATION | -40°C TO +80°C |
| 4 | OPEN PORTS AND CONNECTIONS ARE FITTED WITH CLOSURE PLUGS FOR STORAGE AND TRANSIT PURPOSES | |

| | DEVICE | PS DETAILS | DEVICE PART No. |
|--|--------|------------|-----------------|
| FOR FURTHER TECHNICAL DATA SEE PRODUCT SPECIFICATION | A | 4721950160 | 472 195 124 0 |
| | B | 9732980180 | 973 298 099 0 |
| | A | 4721950160 | 472 195 124 0 |

| PART CODE | MATERIAL | SURFACE PROTECTION |
|-----------|-----------------|--------------------|
| XVII | STEEL | NO TREATMENT |
| XVI | CAST IRON | PLATED |
| XV | STEEL | ZINC IRON PLATED |
| XIV | CAST IRON | NO TREATMENT |
| XIII | ZINC ALLOY | ANODISED |
| XII | PLASTIC | NO TREATMENT |
| XI | RUBBER | NO TREATMENT |
| X | STAINLESS STEEL | NO TREATMENT |
| IX | BRASS | NO TREATMENT |
| VIII | ZINC ALLOY | CHROMATED |
| VII | ALUMINIUM ALLOY | ANODISED |
| VI | ALUMINIUM ALLOY | CHROMATED |
| V | CAST IRON | PAINTED |
| IV | STEEL | POWDER COATED |
| III | STEEL | PAINTED |
| II | STEEL | PHOSPHATED |
| I | STEEL | ZINC PLATED |

General Specifications: ISO 8015, JED-334-1, Size ISO 14405 LP
 Further Technical Data: REFER TABLE
 Doc. Code: 035 Sheet: To

Copyright ZF®
 Date: 2026-03-30
 Drawn: Prasanna
 Checked: Balakrishnan
 2026-04-01

REAR AXLE PACKAGE

Material No.: 472 195 123 0
 Date of first issue: 2015-12-11
 Doc. Code: 005 EN 1/1
 Sheet

Mass: 3.93 kg
 Scale: 1:1
 Dimensions in mm

EDN-No.: 519312
 Revision: 3
 Techn. Resp.: A
 6335

1) Tolerance Class Applied Crossmarked

Non è permesso copiare o riprodurre questo documento, né utilizzare a contenuto o renderlo comunque noto a terzi senza permesso scritto dalla ZF. È vietata espressamente la ristampa o l'uso non autorizzato. Toute réimpression ou utilisation non autorisée sans la permission écrite de la ZF est formellement interdite. Toute réimpression ou utilisation non autorisée sans la permission écrite de la ZF est formellement interdite.