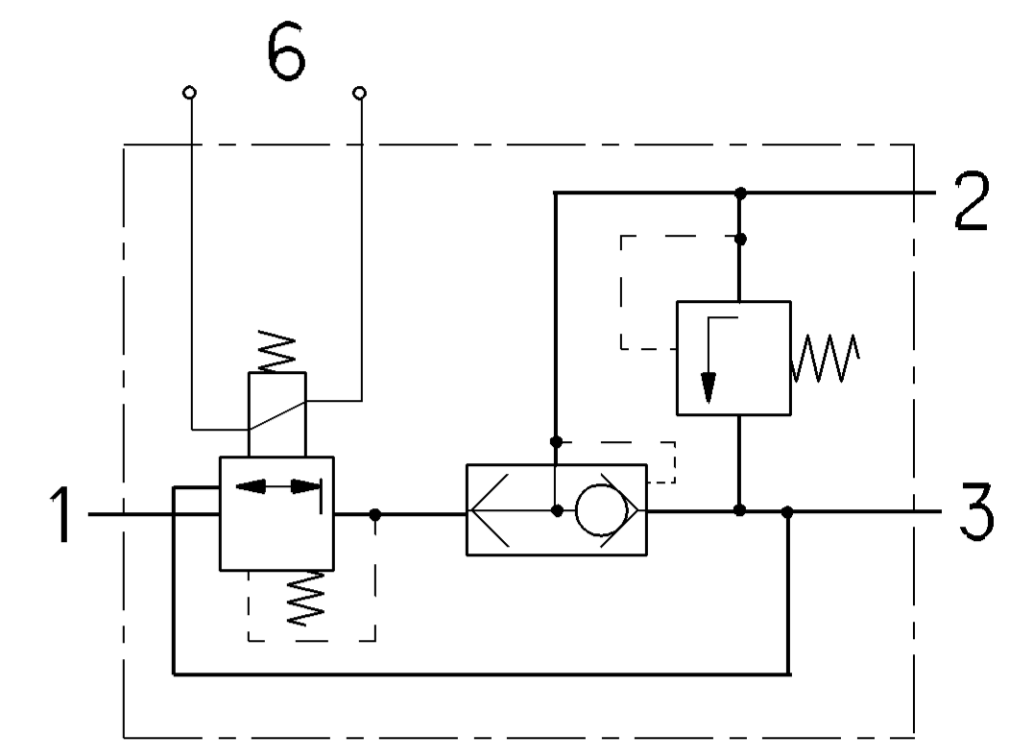
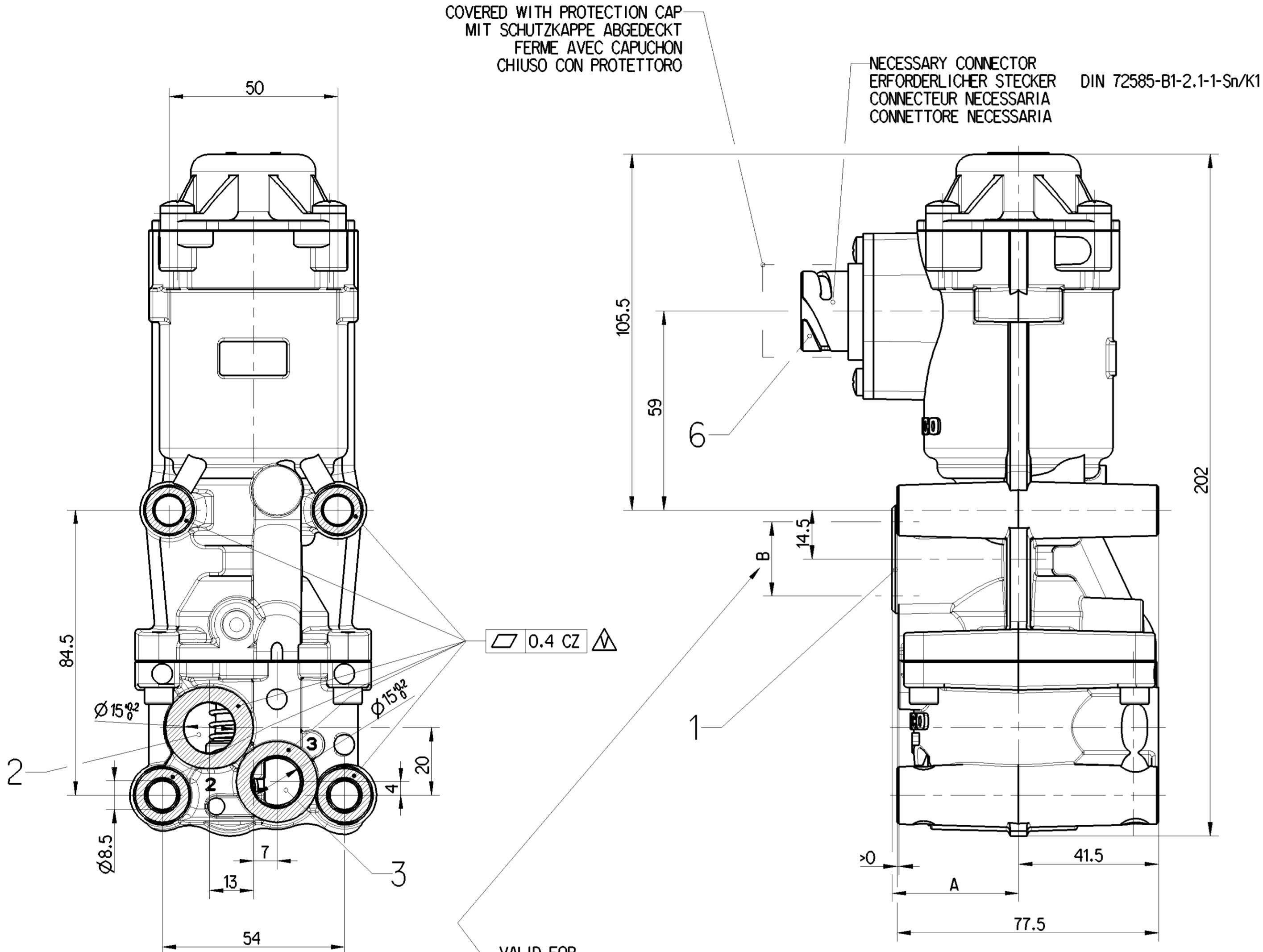


PORT ANSCHLUSS PORT ATTACCO	FUNCTION FUNCTION FUNZIONE
6.1	HIGH, HIGH, HIGH, ALTO
6.2	LOW, LOW, LOW, BASSO



- 1 SUPPLY, ENERGIEZUFLOSS VOM VORRAT, ALIMENTATION, ALIMENTAZIONE
- 2 DELIVERY, ENERGIEABFLUSS IN DIE ARBEITSLEITUNG, UTILISATION, MANDATA
- 3 EXHAUST, ENTLUEFTUNGSANSCHLUSS, ECHAPPEMENT, SCARICO
- 6 ELECTRICAL CONTROL, ELEKTRISCHER STEUERANSCHLUSS, COMMANDE ELECTRIQUE, COMANDO ELETTRICO

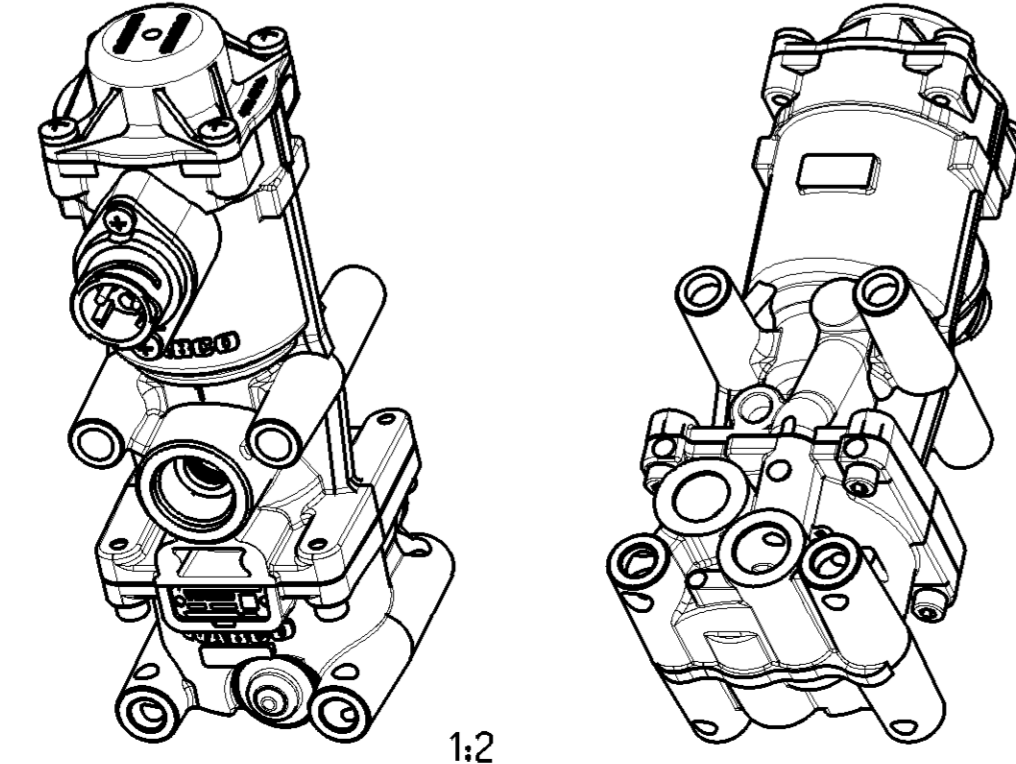
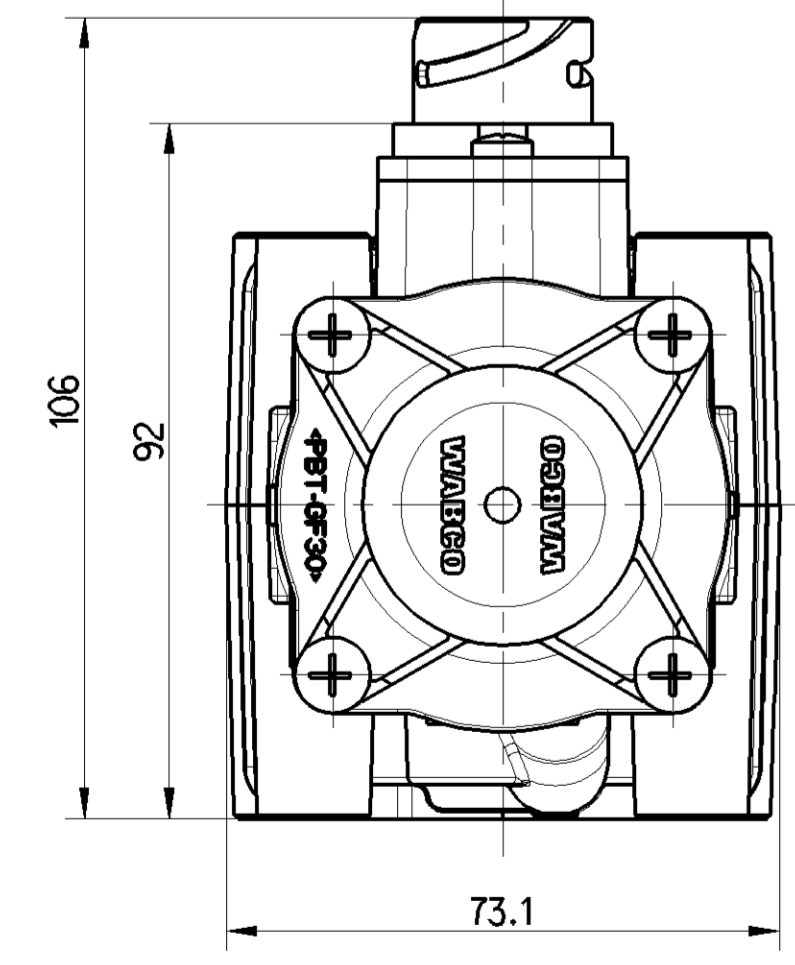
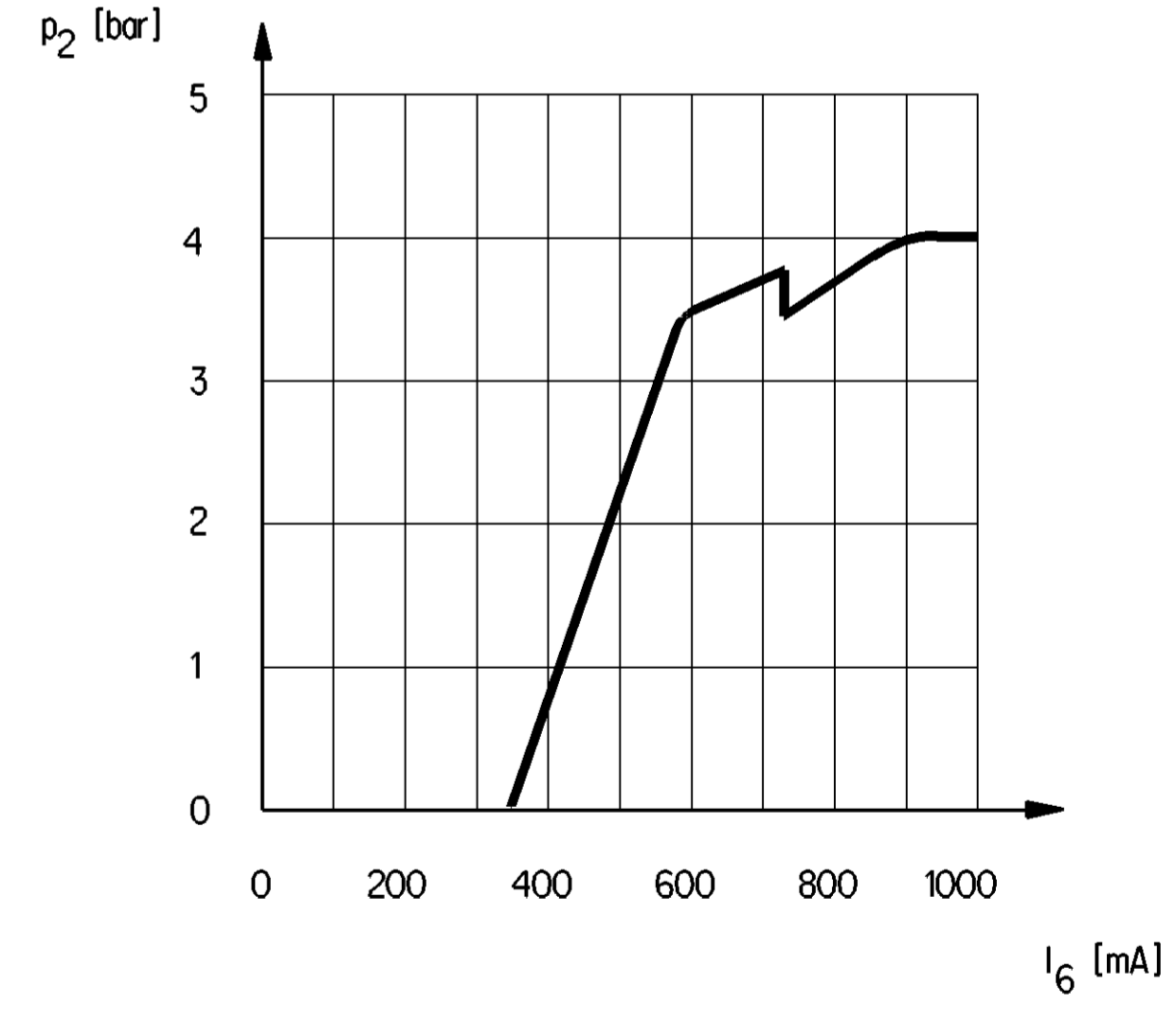
CODING HOLE ONLY BY
KODIERBOHRUNG NUR BEI
CODANT LE FORAGE SEULEMENT
CODIFICANDO PERFORARE SOLTANTO

472 260 006 0

IN THIS ZONE : FREE FROM PAINT
IN DIESEM BEREICH : FREI VON LACK
DANS CETTE ZONE : SANS PEINTURE
IN QUESTA ZONA : SENZA VERNICE

VALID FOR
GILT NUR FÜR
SEULEMENT VALABLE POUR
SOLO PALIDO PER

472 260 005 0
472 260 006 0



No.	TEXT	TEXT HEIGHT	COLOUR
1	CUSTOMER NO KUNDEN-NR. NO CLIENT NO CLIENTE	1.7	Metallic
2	JED-369-WABCO-14mm	2.2	Black
3	PRI	>1.5	Metallic
4	DATE OF MANUFACTURE HERSTELLDATUM DATE OF FABRICATION DATA DI FABRICAZIONE	>1.5	Metallic
5	DATA CODING	4	Metallic
6	OPTIONAL BELIEBIG A VOLONTE A SCELTA	>1.5	Metallic
7	WABCO IDENTIFICATION NUMBER WABCO IDENTIFIKATIONS-NUMMER WABCO NUMERO D'IDENTIFICATION WABCO NUMERO D'IDENTIFICAZIONE	1.7	Metallic

2:1

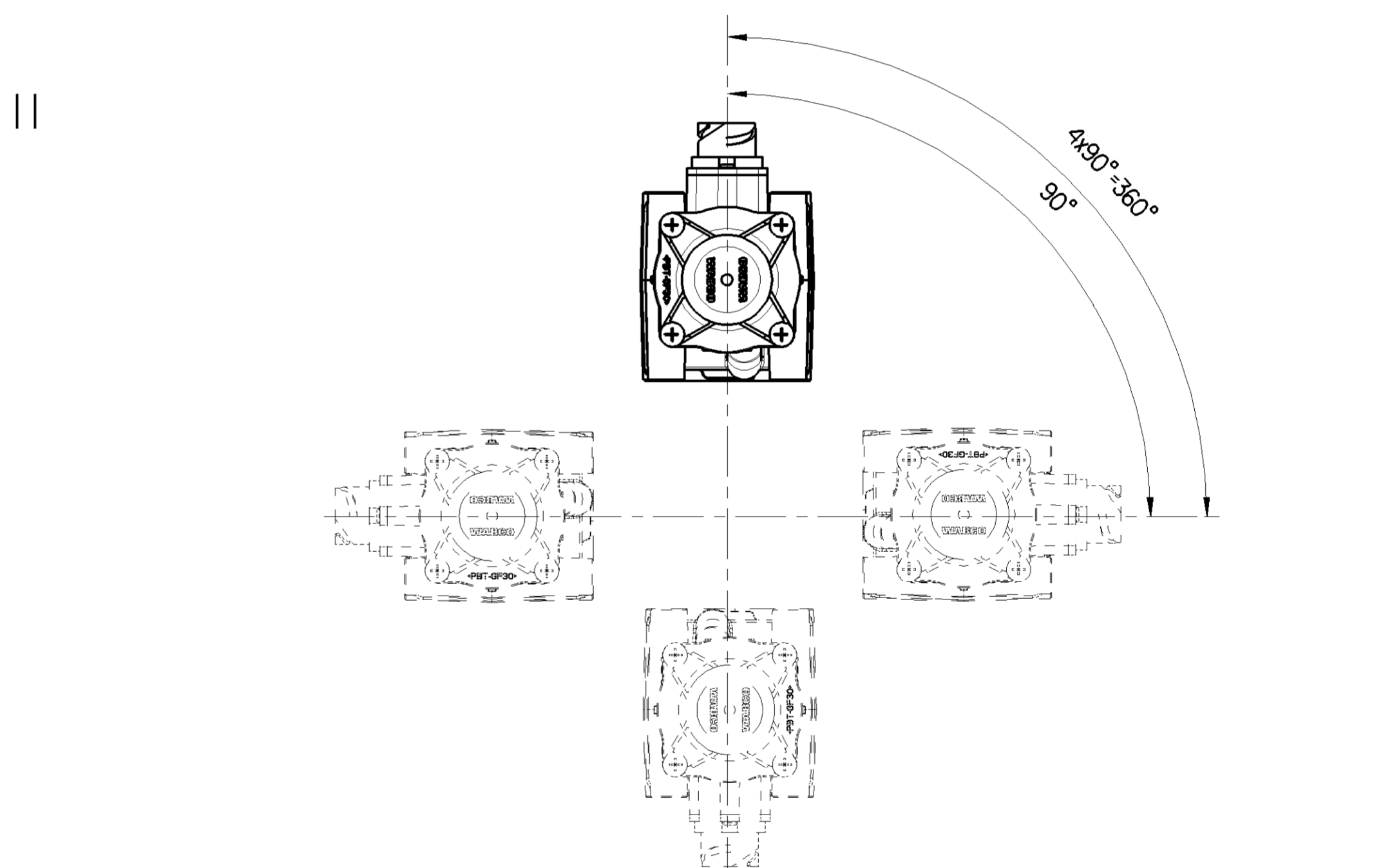
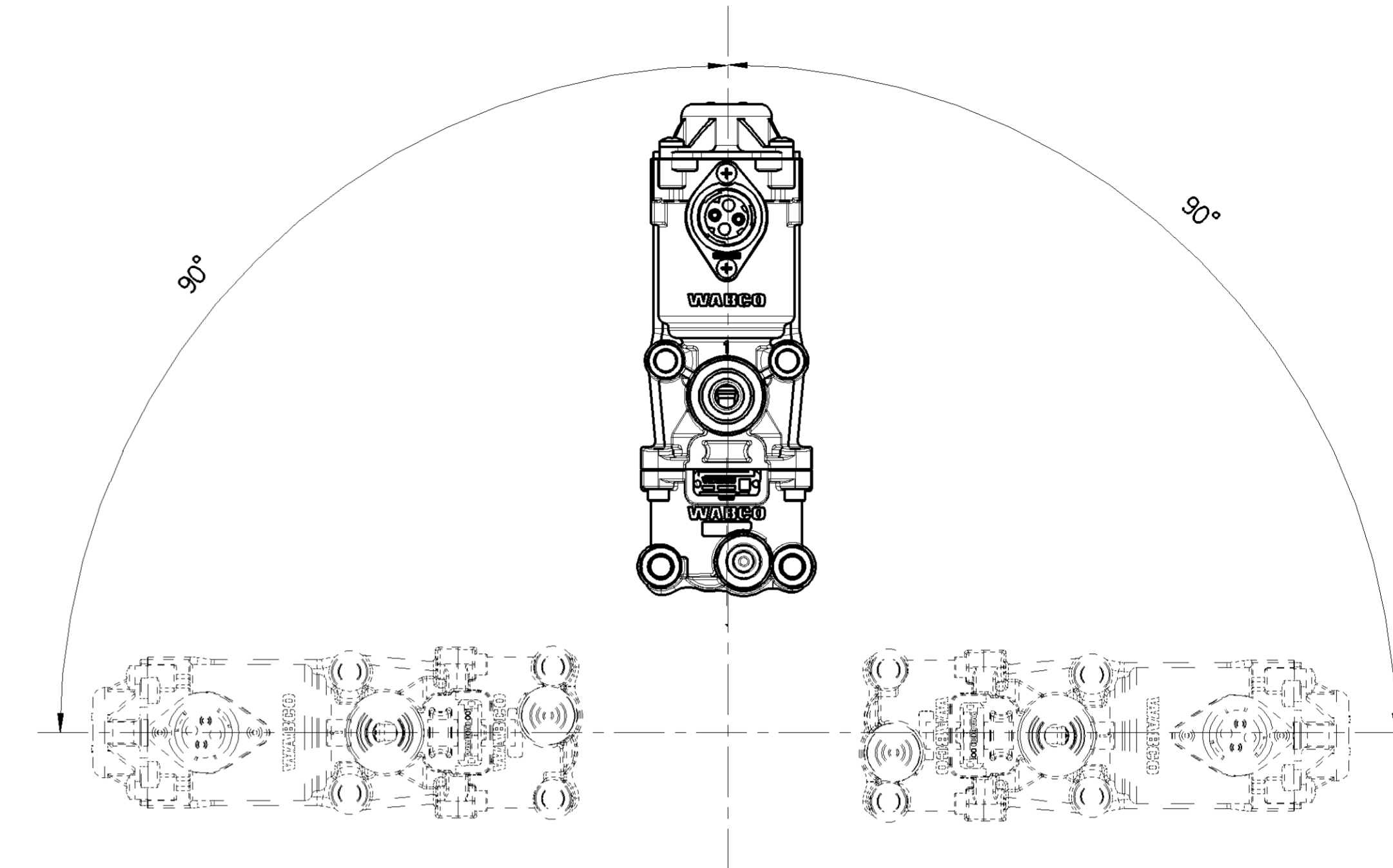
472 260 006 0	37.5	M22x1.5/JED-464
472 260 005 0	37.5	M22x1.5/JED-152
WABCO	A	B
IDENTIFICATION BENENNUNG DENOMINATION DENOMINAZIONE	DIMENSIONS ABMESSUNGEN DIMENSIONS DIMENSIONI	THREAD GEWINDE FILETTAGE FILETTATURA

General Specifications: ISO 8015, JED-334-1, Size ISO 14405 LP		Copyright WABCO®	
Further Technical Data:		Date: 2022-07-05	Signature: Cwikalski
Doc. Code: 511541	Sheet: 1/1	Brand: Zeleni	Checked: Zeleni
General Tolerances JED-261			
Range of nominal dimensions in mm			
Class	1)	≤ 50	> 50 ≤ 180
Class	2)	±0.5	±1
Class	3)	±1	±2
Class	4)	±2	±3
Class	5)	±3	±4
Class	6)	±4	±5
Class	7)	±5	±6.5
Dimensions in mm			
Mass	Scale	1:1	
1.6 kg	1:1	(1:2, 2:1)	
Size	CAD System	472 260 003 0	
Tapped Holes acc. JED-152		Material No. 053 ML 1/2	
1) Tolerance Class Applied Crossmarked		Date of first issue:	
A 1 CREO		Doc. Code Language Sheet	
511541		053 ML 1/2	
Revision Techn. Resp. 6430		Replacement for	
472 260 003 0/97-04-25			

Non è permesso copiare o riprodurre questo documento, né utilizzare il contenuto a fini di lucro, senza permesso scritto dalla WABCO. È vietata espressamente la ristampa o l'uso non autorizzato senza permesso scritto dalla WABCO. Toute réimpression ou utilisation de ce document, ou copie partielle ou intégrale, sans la permission écrite de la WABCO, est formellement interdite. Toute utilisation non autorisée sans la permission écrite de la WABCO est formellement interdite. All rights reserved. No part of this document may be reproduced, stored in a retrieval system, or transmitted, in any form or by any means, without the prior written permission of WABCO. All rights reserved. No part of this document may be reproduced, stored in a retrieval system, or transmitted, in any form or by any means, without the prior written permission of WABCO.

THE VALVE CORRESPONDS TO THE REGULATIONS FOR ELECTROMAGNETIC DEVICES ACCORDING TO VDE 0580 GERAET ENTSPRICHT DEN BESTIMMUNGEN FUER ELEKTROMAGNETISCHE GERAETE NACH VDE 0580 LA VALVE CORRESPOND AUX CONDITIONS POUR DES APPAREILS ELECTROMAGNETIQUES SUIVANT VDE 0580 LA VALVOLA CORRESPONDE ALLE CONDIZIONI PER APPARECCHI ELEKTROMAGNETICHI SECONDO VDE 0580			
1.1	WORKING MEDIUM: ARBEITSMEDIUM: FLUIDE D'UTILISATION: FLUIDO DI ESERCIZIO:	AIR (WATER-, OIL AND ALCOHOL CONTAINING) LUFT (WASSER-, OEL UND ALKOHOLHALTIG) AIR (CHARGE D'EAU, D'HUILE ET D'ALCOOL) ARIA (ACQUOSO, OLEIFERO E ALCOOLOSO)	
1.2	WORKING ENVIRONMENT: UMGEBUNGSMEDIUM: FLUIDE AMBIANTE: FLUIDO AMBIENTE:	AIR (CONTAINING WATER, SALT, DUST AND OIL) LUFT (WASSER-, SALZ-, STAUB- UND OELHALTIG) AIR (CHARGE D'EAU, DE SEL, DE POUSSIERE ET D'HUILE) ARIA (CONTENENTE ACQUA, SALE, POLVERE ED OLIO)	
2.1	THERMAL RANGE OF APPLICATION UNDER NORMAL AMBIANT CONDITIONS: THERMISCHER ANWENDUNGSBEREICH UNTER NORMALEN UMGEBUNGSBEDINGUNGEN: PLAGE DE TEMPERATURE EN UTILISATION CONTINUE DE: CAMPO D'APPLICAZIONE TERMICA NELLE NORMALI CONDIZIONI AMBIENTALI:	FULL FUNCTION FOR VOLLE FUNKTION FUER FONCTION COMPLETE POUR FUNZIONE COMPLETA PER	472 260 006 0: -20°C...+110°C 472 260 005 0: -15°C...+110°C
		LIMITED FUNCTION FOR EINGESCHRAENKTE FUNKTION FUER FONCTION LIMITEE POUR FUNZIONE LIMITATA PER	472 260 006 0: -40°C...-20°C 472 260 005 0: -40°C...-15°C
2.2	SHORT THERMAL RESISTANCE TO HEAT (WHEN VENTING): KURZZEITIGE WAERMEBESTAENDIGKEIT (BEIM ENTLUEFTEN): RESISTANCE A LA CHALEUR A COURTE DUREE (A LA PURGE): RESISTENZA AL CALORE BREVE TEMPO SOLO (ALLO SCARICO):	MAX. 180°C AT 10s / BREAK PAUSE 1min PAUSE PAUSA	
3.1	WORKING PRESSURE (SUPPLY): BETRIEBSDRUCK (VORRAT): PRESSION D'UTILIZATION (ALIMENTATION): PRESSIONE DI ESERCIZIO (ALIMENTAZIONE):	$p_1 = 5...12 \text{ bar}$	
3.2	MAX. PERMISSIBLE WORKING PRESSURE (WITHOUT FUNKTION) (SUPPLY): MAX. ZULAESSIGER BETRIEBSDRUCK (OHNE FUNKTION) (VORRAT): PRESSION D'UTILIZATION MAXI ADMISSIBLE (SANS FONCTION) (ALIMENTATION): PRESSIONE DI ESERCIZIO MAX. AMMISSIBILE (SENZA FUNZIONE) (ALIMENTAZIONE):	$p_1 = 16 \text{ bar}$	
3.3	OUTPUT PRESSURE: AUSGANGSDRUCK: PRESSION DE SORTIE: PRESSIONE D'USCITA:	$p_2 = 4 \text{ bar} / \text{ED} = 100\%$	
4.1	MIN. FLOW PASSAGE /NOMINAL DIAMETER: MIN. DURCHFLUSSOFFNUNG /NENNWEITE: MIN. ORIFICE CALIBRE /DIAMETRE NOMINAL: MIN. PASSAGGIO LIBERO /DIAMETRO NOMINALE:	PORT 1 - 2: ANSCHLUSS 1 - 2: ORIFICE 1 - 2: ORIFIZIO 1 - 2:	$50 \text{ mm}^2 / \text{NW } 8$
4.2		PORT 2 - 3: ANSCHLUSS 2 - 3: ORIFICE 2 - 3: ORIFIZIO 2 - 3:	$153.9 \text{ mm}^2 / \text{NW } 14$
5	VOLTAGE: SPANNUNG: VOLTAGE: VOLTAGGIO:	17 ... 32 V	
6	TYPE OF CURRENT: STROMART: NATURE DU COURANT: NATURA DELLA CORRENTE:	DIRECT CURRENT GLEICHSTROM COURANT CONTINU CORRENTE CONTINUA	
7	SERVICE CONDITION: BETRIEBSART: CONDITION DU SERVICE: CONDIZIONE DI SERVIZIO:	CONTINUOUS SERVICE DAUERBETRIEB SERVICE CONTINU SERVIZIO CONTINUO	
8	NOMINAL CURRENT: NENNSTROM: (ED = 100%) COURANT NOMINAL: CORRENTE NOMINAL:	$I_N = 650 \text{ mA} / \text{ED} = 100\%$	
9	DEGREE OF PROTECTION: SCHUTZART: DEGRE DE PROTECTION: GRADO DI PROTEZIONE:	COMPLETE DEVICE WITH MOUNTED COUPLING KOMPLETTES GERAET MIT MONTIERTER KUPPLUNG APPAREIL COMPLET AVEC L' ACCOUPLEMENT MONTE APPARECCHIO COMPLETO CON ACCOPPIAMENTO MONTATO	IP 67, IP 6K9 K
10	PROTECTION CLASS: SCHUTZKLASSE: CLASSE DE PROTECTION: CLASSE DI PROTEZIONE:		III

ADMISSIBLE INSTALLATION POSITION :
ZULAESSIGE EINBAULAGE :
POSITION D'INSTALLATION ADMISE :
POSIZIONE DI MONTAGGIO AMMESSA :



General Specification: ISO 9015, IED-334-1, Size ISO 14405 LP		Copyright WABCO®	
Further Technical Data:		Date	Signature
Doc. Code	Sheet To	2022-07-05	Cwidakski
General Tolerances IED-261		Checked	Zeleni
Range of nominal dimensions in mm		Dimensions in mm	
Class	1) ≤ 50	2) 50 > 180	3) 180 ≤ 400
Fine	±0.5	±1	±1.5
Medium	±1	±2	±3
Coarse	±2	±3.5	±5
Tapped Holes acc. IED-152		Material No.	
1) Tolerance Class Applied Crossmarked		Mass	Scale
		1.6 kg	1:2
		Size	CAD System
		A 1	CREO
		Material No. 472 260 003 0	
		Date of first issue	
		053 ML 2/2	
		Doc. Code Language Sheet	
		053 ML 2/2	
		EOL-No. Revision Techn. Resp.	
		511541 0x/1x V 6430	
		Replacement for	
		472 260 003 0/97-04-25	

Tutti i diritti sono riservati. È vietata espressamente la ristampa o l'uso non autorizzato senza permesso scritto dalla WABCO. Tutti i diritti sono riservati. È vietata espressamente la ristampa o l'uso non autorizzato senza permesso scritto dalla WABCO. All rights reserved. No part of this document may be reproduced or transmitted in any form or by any means electronic or mechanical, including photocopying and recording, or by any information storage or retrieval system, without prior written permission from WABCO.