

MATERIAL AND SURFACE PROTECTION			
a	PA6.6	e	PA6.6 35% GF
b	Zn / C	f	SI / Zn
c	8.8 / Zn	g	SI / painted
d	PA 6T/6I 30% GF	h	10.9 / Zn
j	8.8 / Zn	k	PA6.6 35% GF (A)
l			AL

THE VALVE CORRESPONDS TO THE REGULATIONS FOR ELECTROMAGNETIC DEVICES ACCORDING TO VDE 0580  
 DAS GERÄT ENTSPRICHT DEN BESTIMMUNGEN FÜR ELEKTROMAGNETISCHE GERÄTE NACH VDE 0580  
 LA VALVE CORRESPOND AUX CONDITIONS POUR DES APPAREILS ELECTROMAGNETIQUES SUIVANT VDE 0580  
 LA VALVOLA CORRISPONDE ALLE CONDIZIONI PER APPARECCHI ELEKTROMAGNETICHI DECONDO VDE 0580

1.1 WORKING MEDIUM : AIR (CONTAINING WATER, OIL AND ALCOHOL)  
 ARBEITSMEDIUM : LUFT (WASSER, OEL- UND ALKOHOLHALTIG)  
 FLUIDE D'UTILISATION : AIR (CHARGE D'EAU, D'HUILE ET D'ALCOOL)  
 FLUIDO DI ESERCIZIO : ARIA (CONTENENTE ACQUA, OLIO ED ALCOOL)

1.2 AMBIENT MEDIUM : AIR (CONTAINING WATER AND SALT)  
 UMGEBUNGSMEDIUM : LUFT (WASSER- UND SALZHALTIG)  
 FLUIDE AMBIANT : AIR (CHARGE D'EAU ET DE SEL)  
 FLUIDO AMBIENTE : ARIA (CONTENENTE ACQUA ED SALE)

2.1 THERMAL RANGE OF APPLICATION UNDER NORMAL AMBIENT CONDITIONS : -40°C...+80°C  
 THERMISCHER ANWENDUNGSBEREICH UNTER NORMALEN UMGEBUNGSBEDINGUNGEN :  
 GAMME D'APPLICATION THERMIQUE DANS CONDITIONS AMBIENTES NORMALES :  
 CAMPO TERMICO D'APPLICAZIONE NELLE NORMALI CONDIZIONI AMBIENTALI :

2.2 SHORT TERM RESISTANCE TO HEAT : MAX. 1h AT 110°C  
 KURZZEITIGE WAERMEBESTAENDIGKEIT :  
 RESISTANCE THERMIQUE TEMPORAIRE :  
 RESISTANZA TERMICA PER BREVE PERIODO :

3.1 WORKING PRESSURE (SUPPLY) :  $p_e = 5...13$  bar  
 BETRIEBSDRUCK (VORRAT) :  
 PRESSION D'UTILISATION (ALIMENTATION) :  
 PRESSIONE DI ESERCIZIO (ALIMENTAZIONE) :

3.2 MAX. DYNAMIC PRESSURE (DELIVERY) :  $p_e = 20$  bar  
 MAX. DYNAMISCHER DRUCK (ARBEITSLAUF) :  
 PRESSION DYNAMIQUE MAXI. (UTILISATION) :  
 PRESSIONE DINAMICA MAX. (MANDATA) :

4.1 MIN. FLOW PASSAGE /NOMINAL DIAMETER  
 MIN. DURCHFLOSSUEFFNUNG /NENNWEITE  
 MIN. ORIFICE CALIBRE /DIAMETRE NOMINAL  
 MIN. PASSAGGIO LIBERO /DIAMETRO NOMINALE

4.2 PORT 3,11,21 : ANSCHLUSS 3,11,21: 75 mm<sup>2</sup> (=  $\varnothing 9.8$ mm)  
 ORIFICE 3,11,21 :  
 ORIFIZIO 3,11,21 :

4.3 PORT 22,23,25,26,27 : ANSCHLUSS 22,23,25,26,27 : 38.5 mm<sup>2</sup> (=  $\varnothing 7$ mm)  
 ORIFICE 22,23,25,26,27 :  
 ORIFIZIO 22,23,25,26,27 :

5 TYPE OF CURRENT : DIRECT CURRENT  
 STROMART : GLEICHSTROM  
 NATURE DU COURANT : COURANT CONTINU  
 NATURA DELLA CORRENTE : CORRENTE CONTINUA

6 MAINTENANCE REQUIREMENTS : NONE  
 WARTUNGSANFORDERUNGEN : KEINE  
 ENTRETIEN : NON  
 MANUTENZIONE : NON

7 OPERATING VOLTAGE : 24V <sup>+6V</sup> / -4.4V  
 BETRIEBSSPANNUNG :  
 TENSION DE SERVICE :  
 TENSIONE DI SERVIZIO :

8 INSTALLATION LIMITATIONS : DIRECTION A, B OR C MAY POINT UPWARDS  
 EINBAUBESCHRAENKUNGEN : RICHTUNG A, B ODER C NACH OBEN ZULAESSIG  
 RESTRICTIONS D'INSTALLATION : DIRECTION A, B OU C PEUT ETRE ORIENTEE VERS LE HAUT  
 LIMITAZIONE DI MONIAGGIO : DIREZIONE A, B O C ORIENTATA VERSO L'ALTO AMMESSA

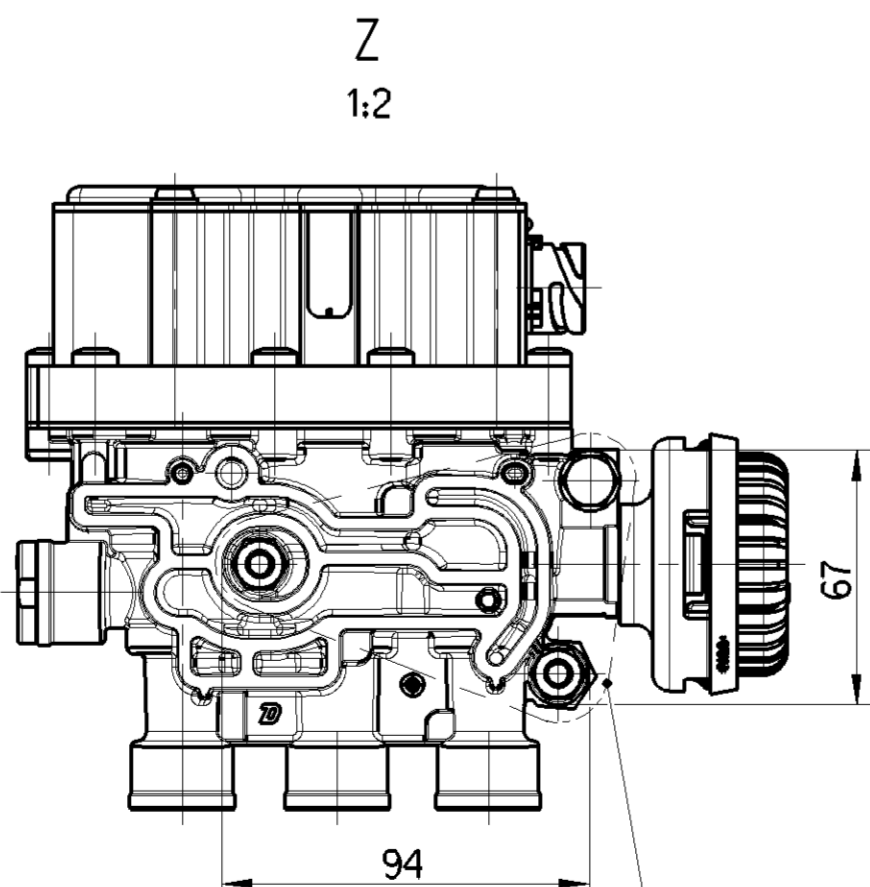
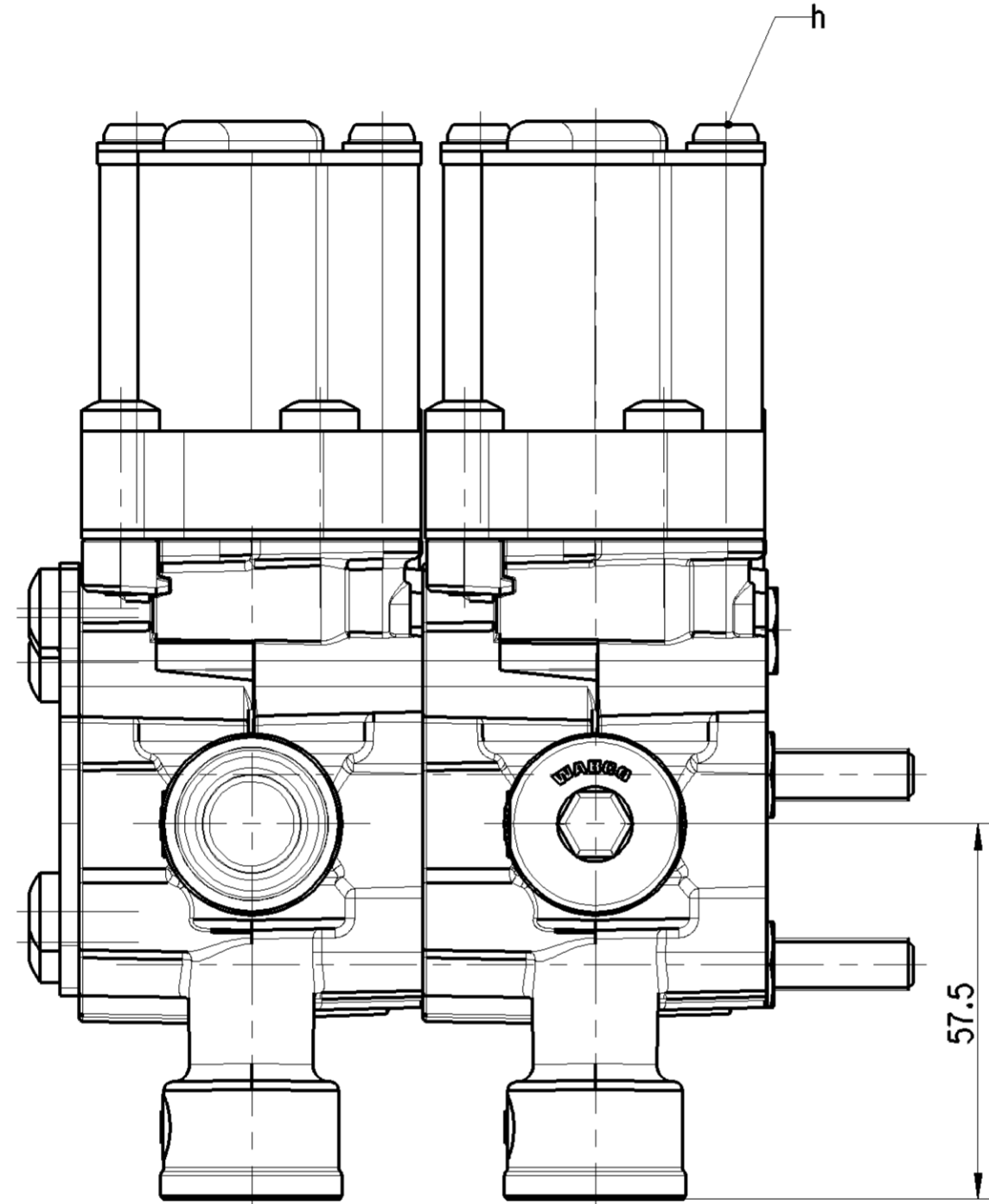
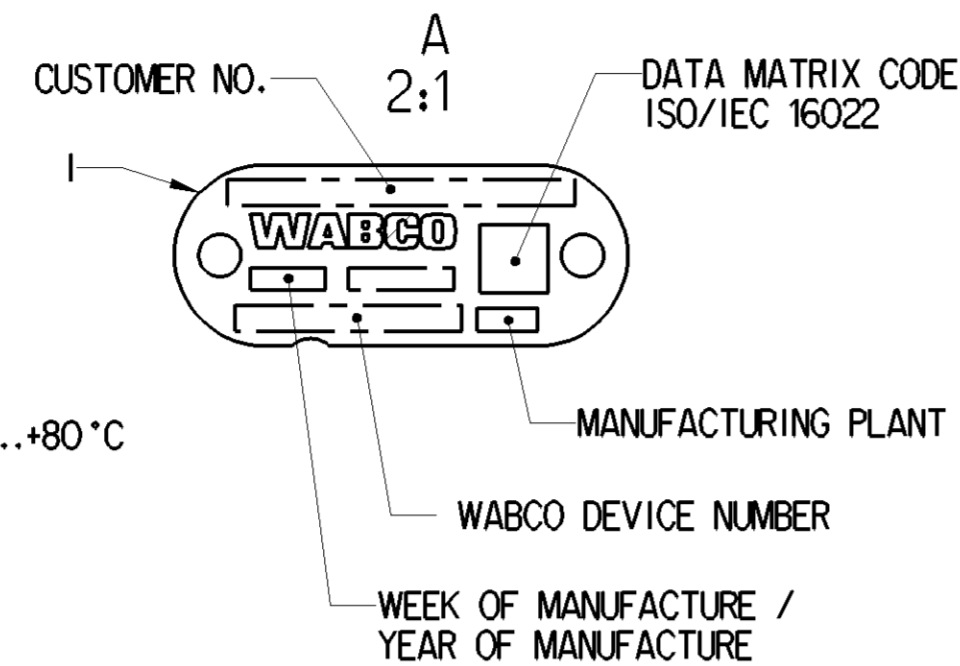
9 SERVICE CONDITION : VALVE : 100% ED  
 BETRIEBSART : VENTIL I + II : (-40°C...+60°C)  
 CONDITION DU SERVICE : CLAPET : 50% ED/5min.  
 CONDIZIONE DI SERVIZIO : VALVOLA : (+60°C...+80°C)

10 SECURITY AGAINST THE CONFUSING OF POLES: EXISTING  
 VERPOLSICHERHEIT : VORHANDEN  
 DISPOSITIF DE TROMPEUR DE POLES : EXISTANT  
 SICUREZZA CONTRO L'INVERSIONE DEI POLI : ESISTENTE

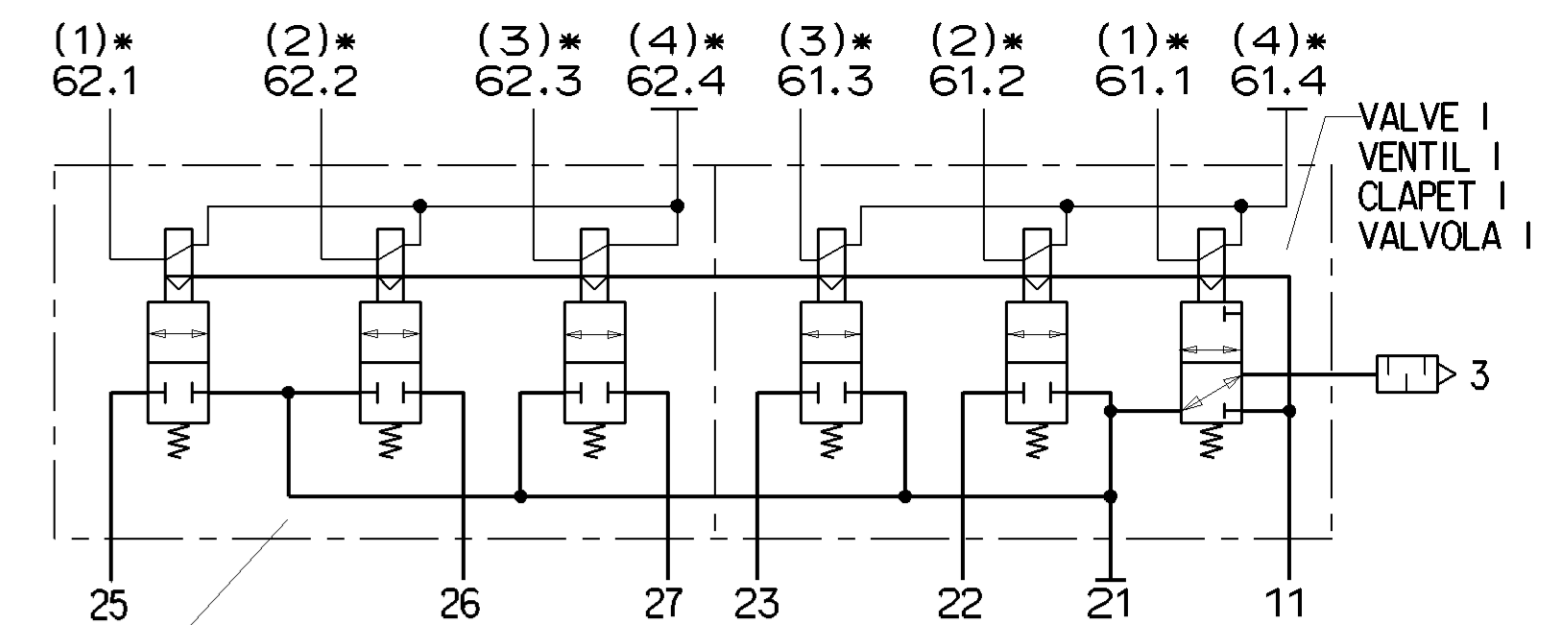
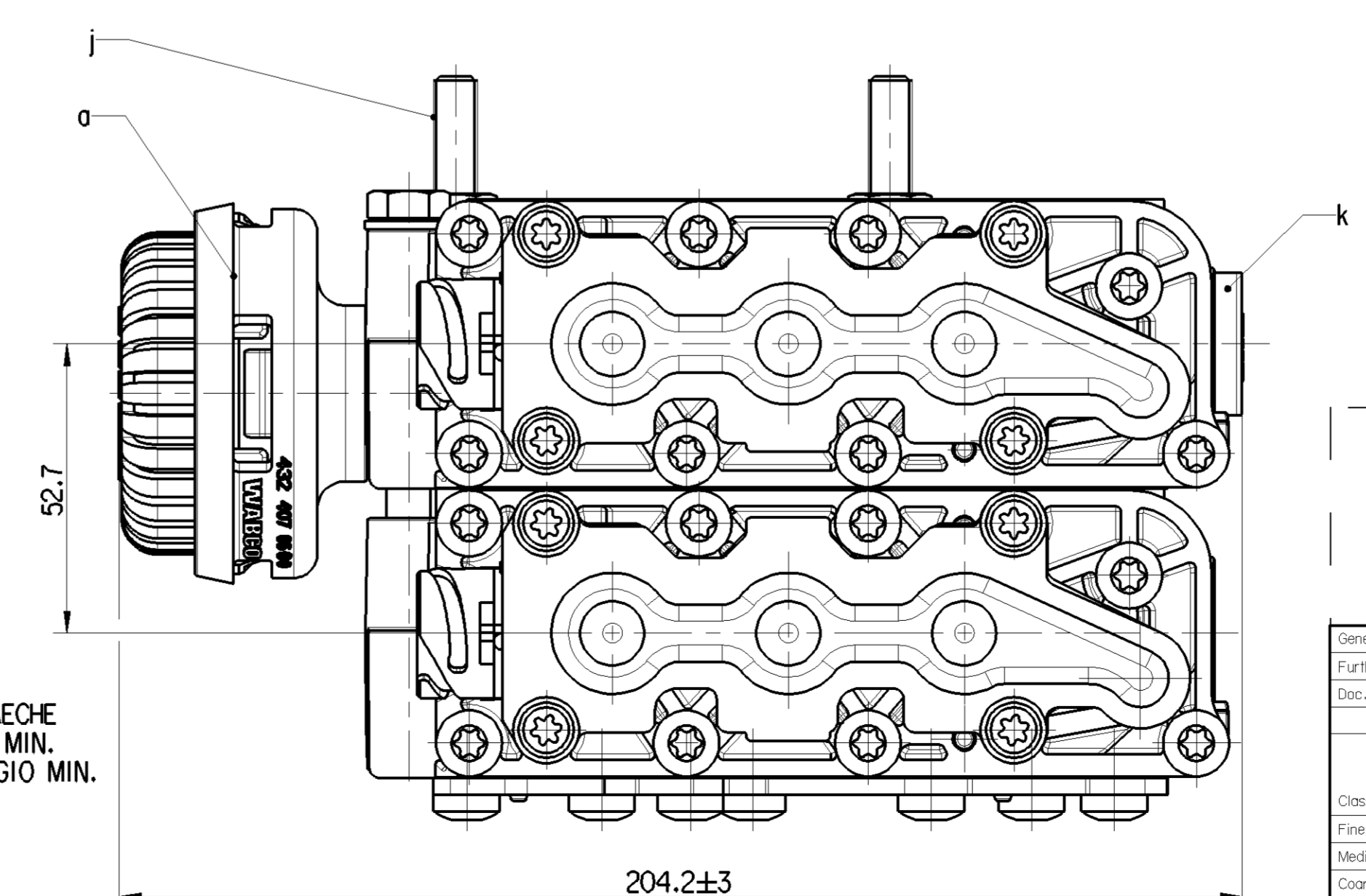
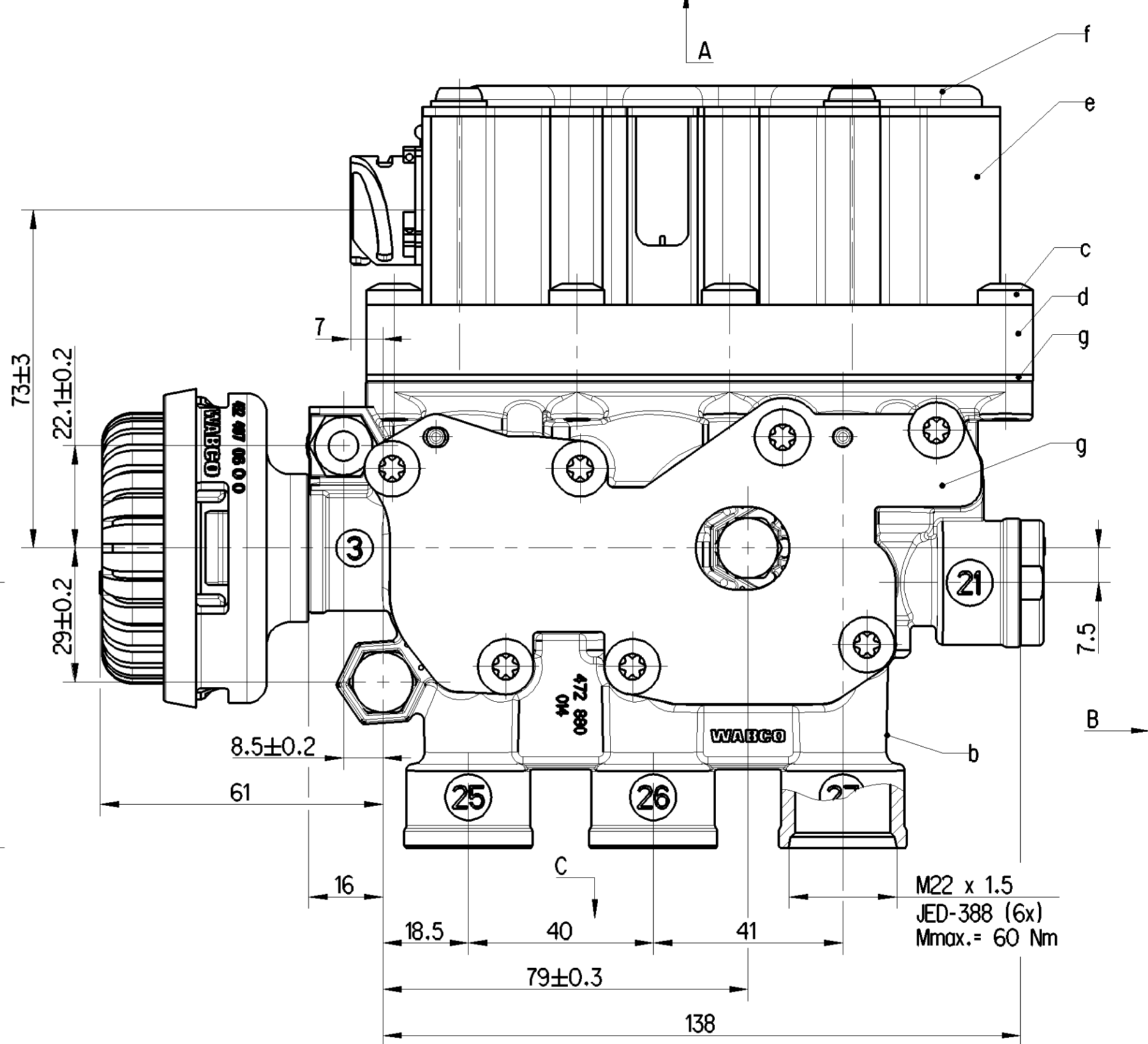
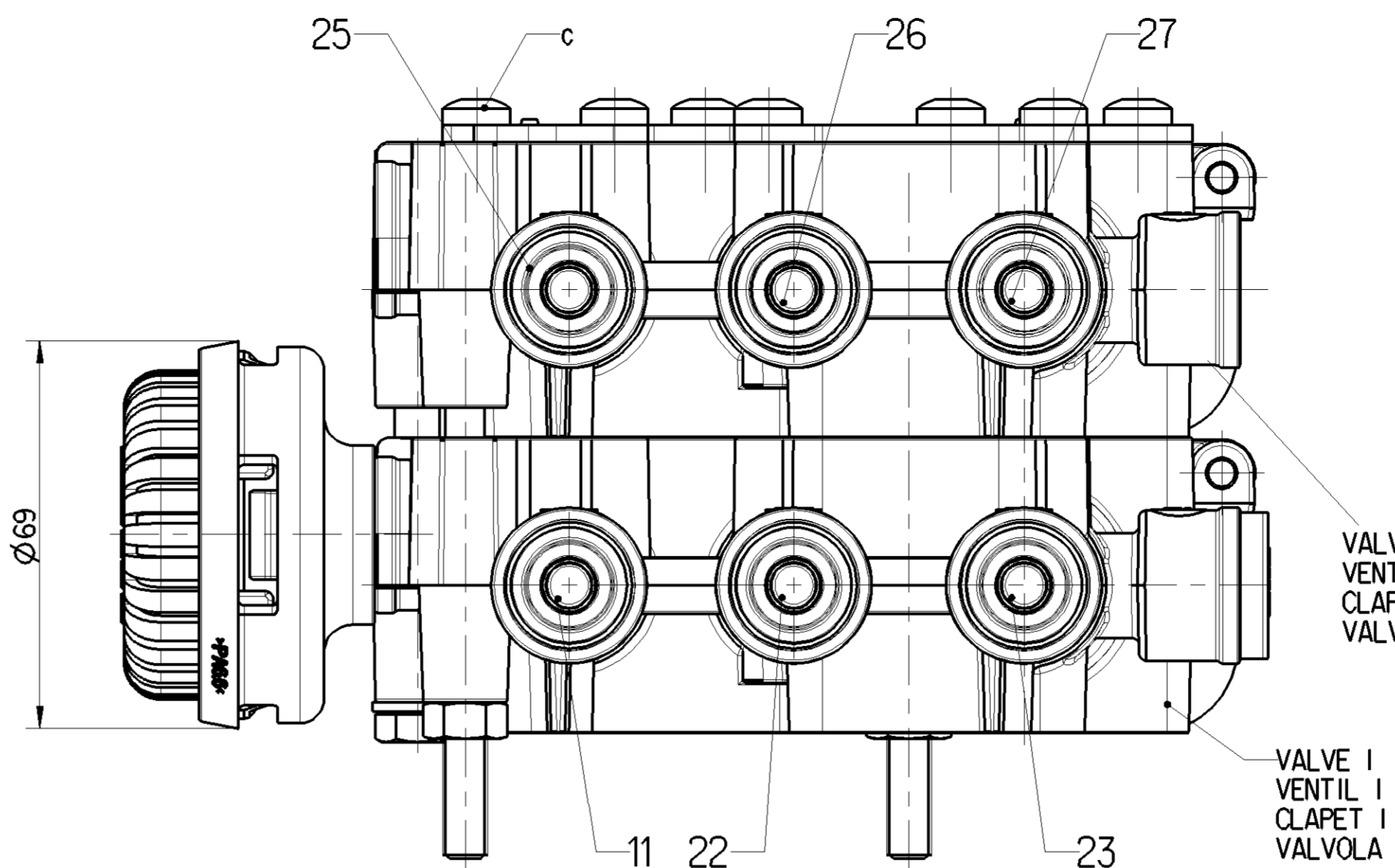
11 RATED CURRENT AT ROOM TEMPERATURE :  $I_N = 0.32$  A  
 NENNSTROM BEI RAUMTEMPERATUR :  
 COURANT NOMINAL A LA TEMPERATURE AMBIANTE :  
 CORRENTE NOMINALE ALLA TEMPERATURA AMBIENTE :

12 DEGREE OF PROTECTION ACCORDING TO DIN 40050 : IP 6K9K  
 SCHUTZART NACH DIN 40050 :  
 DEGRE DE PROTECTION SUIVANT DIN 40050 :  
 GRADO DI PROTEZIONE SECONDO DIN 40050 :

11: SUPPLY; ENERGIEZUFLOSS VOM VORRAT; ALIMENTATION;  
 ALIMENTAZIONE  
 21, 22, 23,25,26,27: DELIVERY; ENERGIEABFLUSS IN DIE ARBEITSLAUF;  
 UTILISATION; MANDATA  
 3: EXHAUST; ANSCHLUSS ATHMOSPHAERE; ECHAPPEMENT; SCARICO  
 61.1, 61.2, 61.3, 61.4: ELECTRICAL CONTROL; ELEKTTRISCHER STEUERANSCHLUSS;  
 62.1, 62.2, 62.3, 62.4 COMMANDE ELECTRIQUE; COMANDO ELETRICO

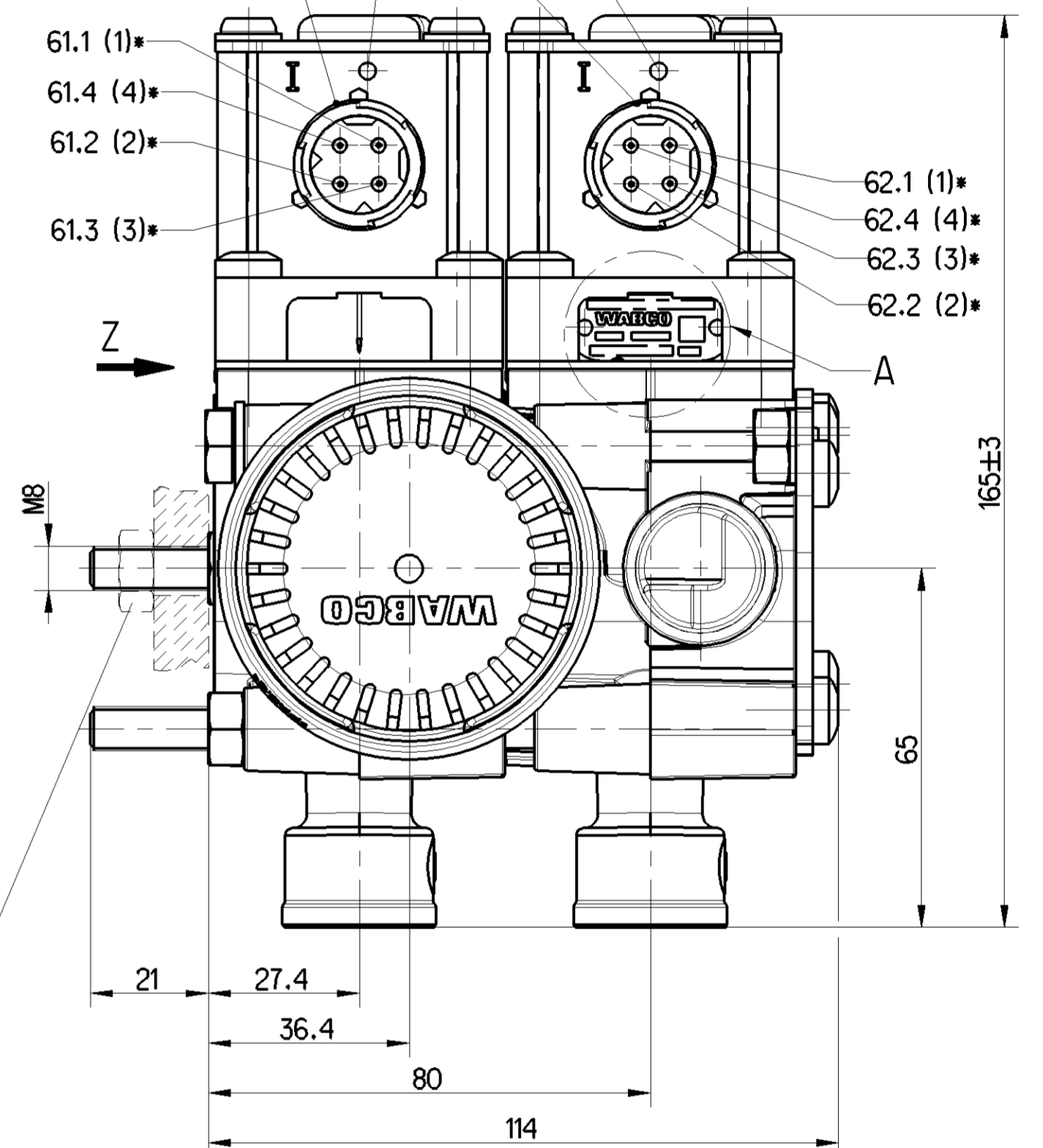


MIN. MOUNTING FACE  
 MIN. BEFESTIGUNGSFLAECHE  
 SURFACE DE FIXATION MIN.  
 SUPERFICIE DI FISSAGGIO MIN.



DIN 72585-A1-4.1-Sn/K2  
 CODE FOR PLUG  
 CODIERUNG FUER STECKER  
 CODEF POUR FICHE  
 CODICE PER SPINA

\* SOCKET  
 GERÄTESTECKDOSE  
 PRISE DE COURANT  
 PRESA DI CORRENTE



TORQUE : max. 23 Nm  
 ANZUGSMOMENT :  
 COUPLE DE SERRAGE :  
 COPPIA DI SERRAGGIO :

General Specifications		Copyright WABCO	
JED-334-1 - Size ISO 14405 LP		Date	Signature
Further Technical Data		2017-12-07	Reple
Doc. Code	Sheet To	2017-12-18	Zak
General Tolerances JED-261		Expert	
Range of Nominal Dimensions (± mm)		Zak	
Class	1) ≤ 50	2) > 50	3) > 180
Fine	± 0.1	± 0.15	± 0.2
Medium	± 0.2	± 0.3	± 0.4
Coarse	± 0.3	± 0.5	± 0.6
Tapped Holes acc.		Mass	Scale
1) Tolerance Class Applied Crossmarked		4.6	1:1
		kg	(1:2,2:1)
		Size	CAD System
		A 1	CREO
		ED-Code	Revision
		112872	1x A
		Techn. Resp.	6670
		Replacement for	

**WABCO**

SOLENOID VALVE  
 MAGNETVENTIL  
 ELECTRO-VALVE  
 ELETTROVALVOLA

Material No. 472 880 106 0  
 Date of first issue: 2014-09-10  
 Doc. Code Language Sheet  
 005 ML 1/1

M