

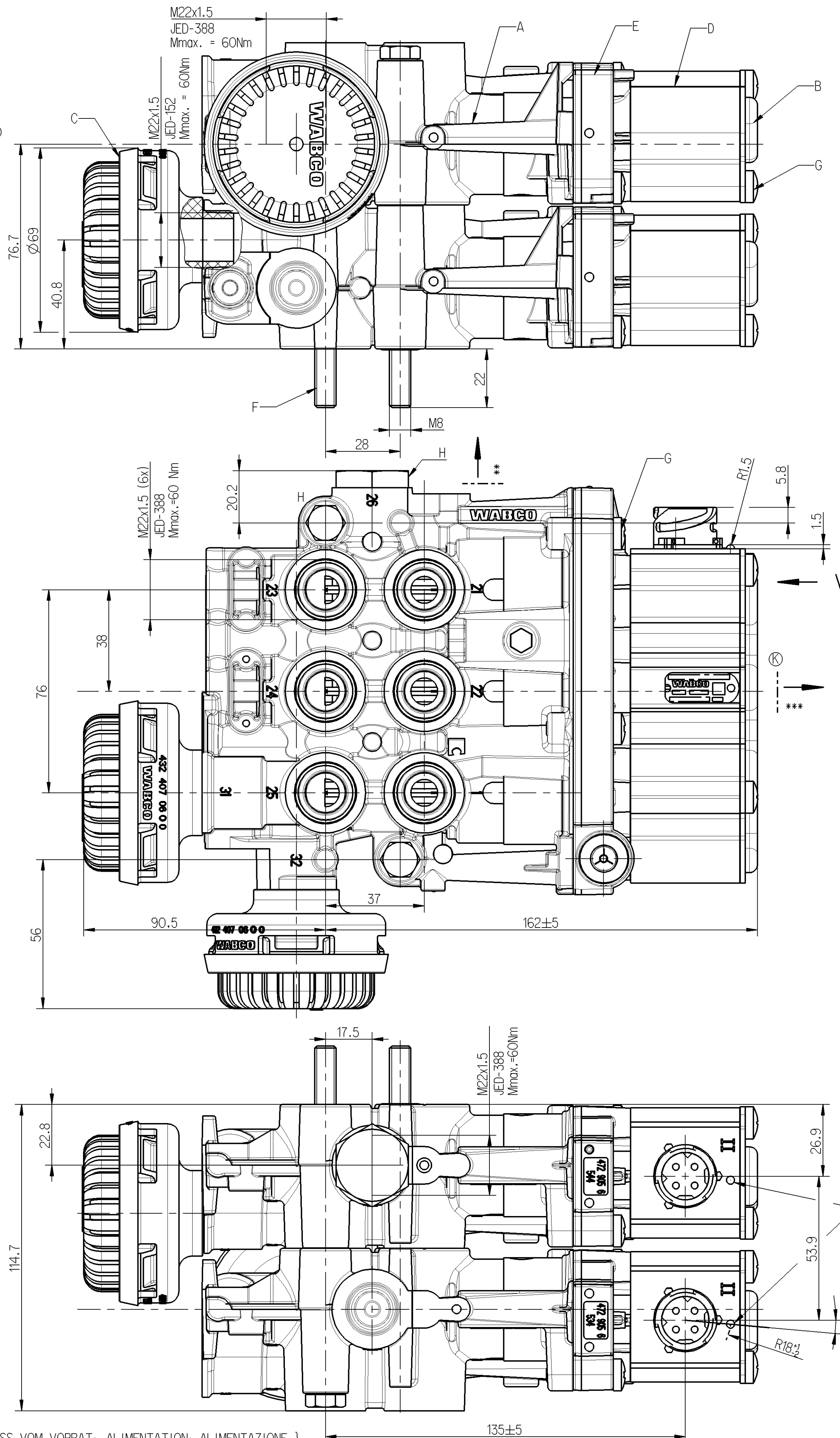
| MATERIAL AND SURFACE PROTECTION |              |   |           |
|---------------------------------|--------------|---|-----------|
| A                               | AL / C       | F | 8.8 / ZN  |
| B                               | FE / ZN-FE   | G | 4.8 / ZN  |
| C                               | PA 6.6       | H | JED-020-0 |
| D                               | PA 6.6 GF-35 | I | AL        |
| E                               | ZN/C         |   |           |

THE VALVE CORRESPONDS TO THE REGULATIONS FOR ELECTROMAGNETIC DEVICES ACCORDING TO VDE 0580  
 DAS GERÄT ENTSPRICHT DEN BESTIMMUNGEN FUER ELEKTROMAGNETISCHE GERÄTE NACH VDE 0580  
 LA VALVE CORRESPOND AUX CONDITIONS POUR DES APPARELS ELECTROMAGNETIQUES SUIVANT VDE 0580  
 LA VALVOLA CORRISPONDE ALLE CONDIZIONI PER APPARECCHI ELEKTROMAGNETICHI DECONDO VDE 0580

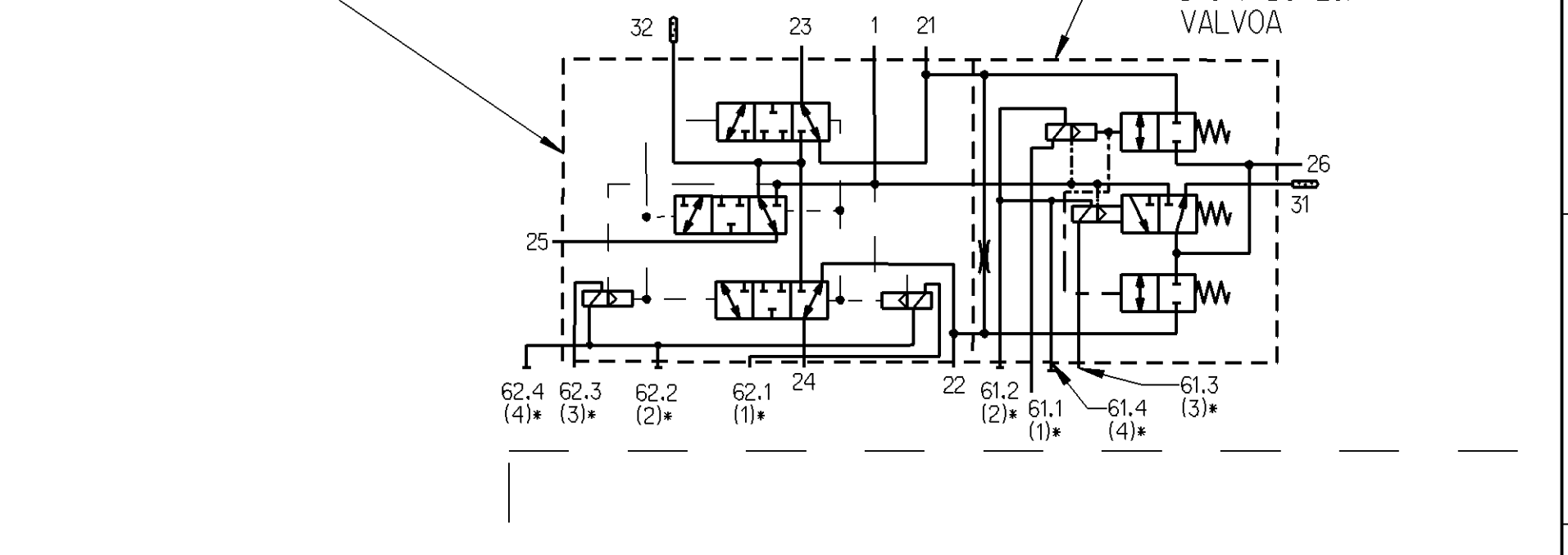
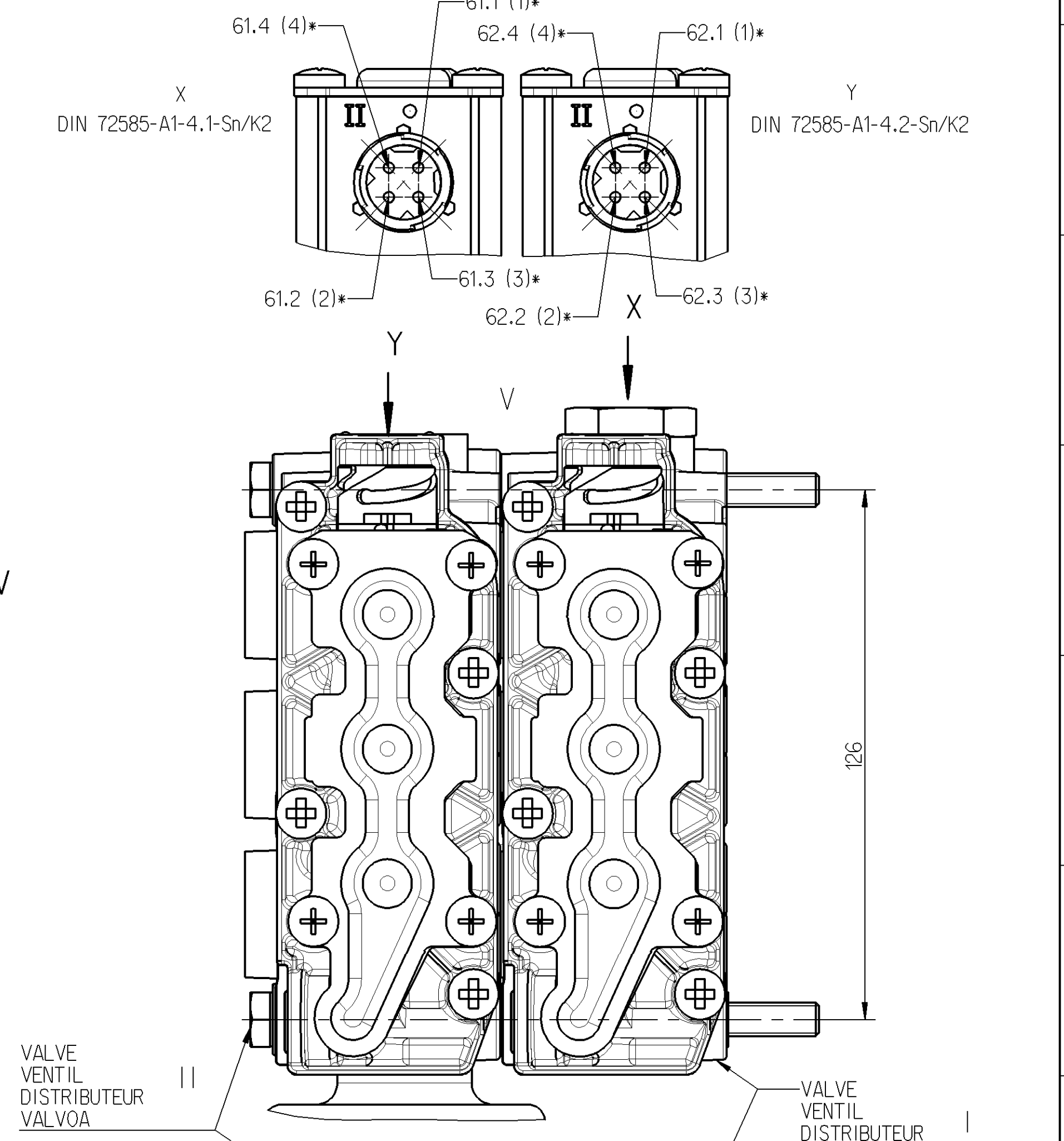
- 1.1 WORKING MEDIUM : AIR ( permissible contaminations see JED-848 )  
 ARBEITSMEDIUM : LUFT  
 FLUIDE D'UTILISATION : AIR  
 FLUIDO DI ESERCIZIO : ARIA
- 1.2 AMBIENT MEDIUM : AIR (CONTAINING WATER AND SALT)  
 UMGEBUNGSMEDIUM: LUFT (WASSER- UND SALZHALTIG)  
 FLUIDE AMBIANT : AIR (CHARGE D'EAU ET DE SEL)  
 FLUIDO AMBIENTE: ARIA (CONTENENTE ACQUA ED SALE)
- 2.1 THERMAL RANGE OF APPLICATION UNDER NORMAL AMBIENT CONDITIONS :  
 THERMISCHER ANWENDUNGSBEREICH UNTER NORMALEN UMGEBUNGSBEDINGUNGEN: -40°C...+80°C  
 GAMME D'APPLICATION THERMIQUE DANS CONDITIONS AMBIENTES NORMALES :  
 CAMPO TERMICO D'APPLICAZIONE NELLE NORMALI CONDIZIONI AMBIENTALI :
- 2.2 SHORT TERM RESISTANCE TO HEAT : WITHOUT VOLTAGE  
 KURZZEITIGE WAERMEBESTAENDIGKEIT : MAX. 1h AT 110°C OHNE SPANNUNG  
 RESISTANCE THERMIQUE TEMPORAIRE : SANS VOLTAGE  
 RESISTANZA TERMICA PER BREVE PERIODO: SENZA VOLTAGGIO
- 3.1 WORKING PRESSURE (SUPPLY) :  
 BETRIEBSDRUCK (VORRAT) : p<sub>e</sub> = 5...13 bar  
 PRESSION D'UTILISATION (ALIMENTATION) :  
 PRESSIONE DI ESERCIZIO (ALIMENTAZIONE) :
- 3.2 MAX. DYNAMIC PRESSURE (DELIVERY) :  
 MAX. DYNAMISCHER DRUCK (ARBEITSLAUF) : p<sub>0</sub> = 20 bar  
 PRESSION DYNAMIQUE MAXI. (UTILISATION) :  
 PRESSIONE DINAMICA MAX. (MANDATA) :
- 4 MIN. FLOW PASSAGE /NOMINAL DIAMETER  
 MIN. DURCHFLOSSUEFFNUNG /NENNWEITE  
 MIN. ORIFICE CALIBRE /DIAMETRE NOMINAL  
 MIN. PASSAGGIO LIBERO /DIAMETRO NOMINALE
- 4.1 PORT 1,21,22,26,31 : ANSCHLUSS 1,21,22,26,31 : 78 mm<sup>2</sup> (= Ø10mm)  
 ORIFICE 1,21,22,26,31 :  
 ORIFIZIO 1,21,22,26,31 :
- 4.2 PORT 23,24,25 : ANSCHLUSS 23,24,25 : 38 mm<sup>2</sup>  
 ORIFICE 23,24,25 : (=Ø 7mm)  
 ORIFIZIO 23,24,25 :
- 4.3 PORT 32 : ANSCHLUSS 32 : 59mm<sup>2</sup>  
 ORIFICE 32 : (=Ø 8.7mm)  
 ORIFIZIO 32 :
- 4.4 THROTTLE : DROSSEL : 0.28mm  
 ETRANGLEUR : (=Ø 0.6mm)  
 STROZZAMENTO :
- 5 INSTALLATION LIMITATIONS : AT THE TOP, PREFERABLY  
 EINBAUESCHRAENKUNGEN : \*\* OBEN, VORZUGSWEISE | \*\*\* OBEN  
 RESTRICTIONS D'INSTALLATION : EN HAUT, PREFERENCE | EN HAUT  
 LIMITAZIONE DI MONIAGGIO : VERSO IL ALTO, PREFERENZA | VERSO IL ALTO
- 6 MAINTENANCE REQUIREMENTS: NONE  
 WARTUNGSANFORDERUNGEN : KEINE  
 ENTRETIEN : NON  
 MANUTENZIONE : NON
- 7 OPERATING VOLTAGE :  
 BETRIEBSSPANNUNG : 24V ±5V  
 TENSION DE SERVICE : -4,4V  
 TENSIONE DI SERVIZIO:
- 8 TYPE OF CURRENT : DIRECT CURRENT  
 STROMART : GLEICHSTROM  
 NATURE DU COURANT : COURANT CONTINU  
 NATURA DELLA CORRENTE: CORRENTE CONTINUA
- 9 SERVICE CONDITION : VALVE 100% ED/5min VALVE  
 BETRIEBSART : VENTIL I (-40°C - +60°C) VENTIL II 100% ED  
 CONDITION DU SERVICE : CLAPET 50% ED/5min CLAPET  
 CONDIZIONE DI SERVIZIO: VALVOLA (+60°C - + 80°C) VALVOLA
- 10 SECURITY AGAINST THE CONFUSING OF POLES: EXISTING  
 VERPOLSICHERHEIT : VORHANDEN  
 DISPOSITIF DE TROMPEUR DE POLES : EXISTANT  
 SICUREZZA CONTRO L'INVERSIONE DEI POLI : ESISTENTE
- 11 NOMINAL CURRENT AT ROOM TEMPERATURE  
 NENNSTROM BEI RAUMTEMPERATUR : I<sub>N</sub> = 0.34 A  
 COURANT NOMINAL A LA TEMPERATURE AMBIANTE :  
 CORRENTE NOMINALE ALLA TEMPERATURA AMBIENTE:
- 12 DEGREE OF PROTECTION ACCORDING TO DIN 40050:  
 SCHUTZART NACH DIN 40050 : IP 6K9K  
 DEGRE DE PROTECTION SUIVANT DIN 40050 :  
 GRADO DI PROTEZIONE SECONDO DIN 40050 :
- 13 PROTECTION CLASS :  
 SCHUTZKLASSE : III  
 CLASSE DE PROTECTION:  
 CLASSE DI PROTEZIONE:

\* SOCKET  
 GERÄTESTECKDOSE  
 PRISE DE COURANT  
 PRESA DI CORRENTE

1 SUPPLY; ENERGIEZUFLOSS VOM VORRAT; ALIMENTATION; ALIMENTAZIONE )  
 21,22, 23,24,25,26: DELIVERY; ENERGIEABFLUSS IN DIE ARBEITSLAUF; UTILISATION; MANDATA )  
 31,32: EXHAUST; ANSCHLUSS ATMOSPHERE; ECHAPPEMENT; SCARICO )  
 61.1, 61.2 , 61.3, 61.4: ELECTRICAL CONTROL; ELEKTRISSCHER STEUERANSCHLUSS;  
 62.1, 62.2, 62.3, 62.4 COMMANDE ELETTRIQUE; COMANDO ELETTRICO



- 1 MANUFACTURING PLANT : JED-225  
 PRODUKTIONSSTAETTE : JED-225  
 LIEU DE FABRICATION :  
 LUOGO DI FABBRICAZIONE :
- 2 WEEK OF MANUFACTURE / YEAR OF MANUFACTURE  
 FERTIGUNGSWOCHE / FERTIGUNGSJAHR  
 SEMAINE DE FABRICATION / ANNEE DE FABRICATION  
 SETTIMANA DI FABBRICAZIONE / ANNO DI FABBRICAZIONE
- 3 WABCO DEVICE NUMBER  
 WABCO-GERÄTE NR.  
 NUMÉRO DE L'APPAREIL WABCO  
 NUMERO DELL' APPARECCHIO WABCO
- 4 CUSTOMER NO.  
 KUNDEN-NR.  
 NUMÉRO DU CLIENT  
 NUMERO CLIENTE
- 5 DATA MATRIX CODE ISO/IEC 16022  
 DATA MATRIX CODE  
 DATA MATRIX CODE  
 DATA MATRIX CODE



CODE FOR PLUG  
 CODIERUNG FUER STECKER  
 CODE POUR FICHE  
 CODICE PER SPINA

| General Specifications                          |         | Copyright WABCO®              |              | WABCO                    |                     |
|---|---------|-------------------------------|--------------|--------------------------|---------------------|
| Further Technical Data                          |         | Date                          | Signature    | SOLENOID VALVE           |                     |
| Doc. Code                                       | Sheet   | 2013-07-24                    | Bolago       | MAGNETVENTIL ( AA + LA ) |                     |
| General Tolerances JED-261                      |         | Checked                       | Zsk          | ELECTROVANNE             |                     |
| Range of Nominal Dimensions ( ± mm )            |         | Expert Couplée                |              | ELECTROVALVOLA           |                     |
| Class   | 1) ≤ 50 | 2) 50 > 180                   | 3) 180 ≤ 400 | 4) > 400                 | Material No.        |
| Fine  | 0.5     | 1.0                           | 1.5          | 2.0                      | 472 905 114 0       |
| Medium  | 1.0     | 2.0                           | 3.0          | 4.0                      | Date of first issue |
| Coarse  | 2.0     | 3.5                           | 5.0          | 6.5                      | 2011-10-24          |
| Tapped Holes acc. ISO 4039 / JED-152 // JED-388 |         | Scale                         | 1:1          | Doc.Code Language Sheet  |                     |
| 1) Tolerance Class Applied Crossmarked          |         | Size                          | 21 x 5.11    | 005                      | ML                  |
|   |         | Pro/E                         | 157905       | 3x                       | K                   |
|   |         | Ech.No. Revision Techn. Resp. |              | Replacement for          |                     |
|   |         | 6670                          |              |                          |                     |