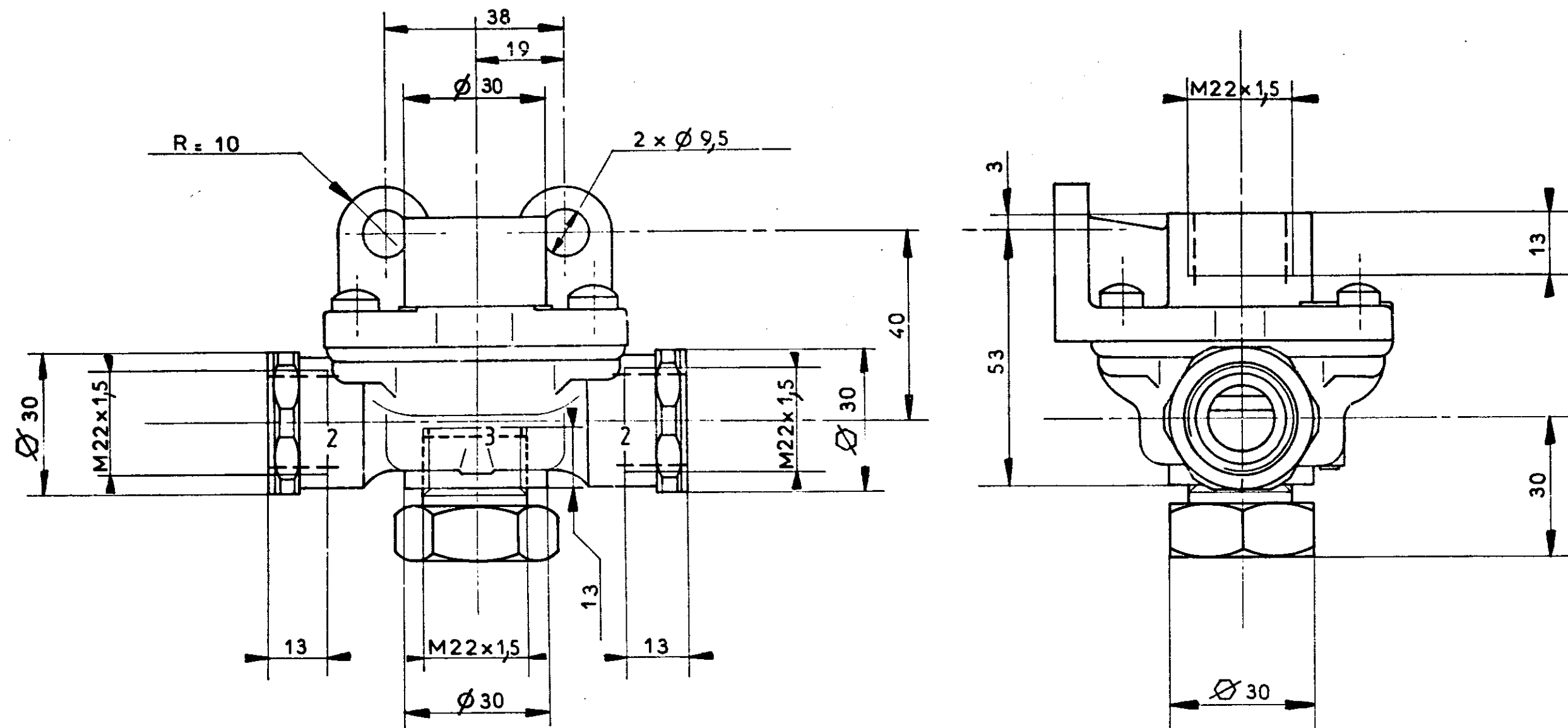
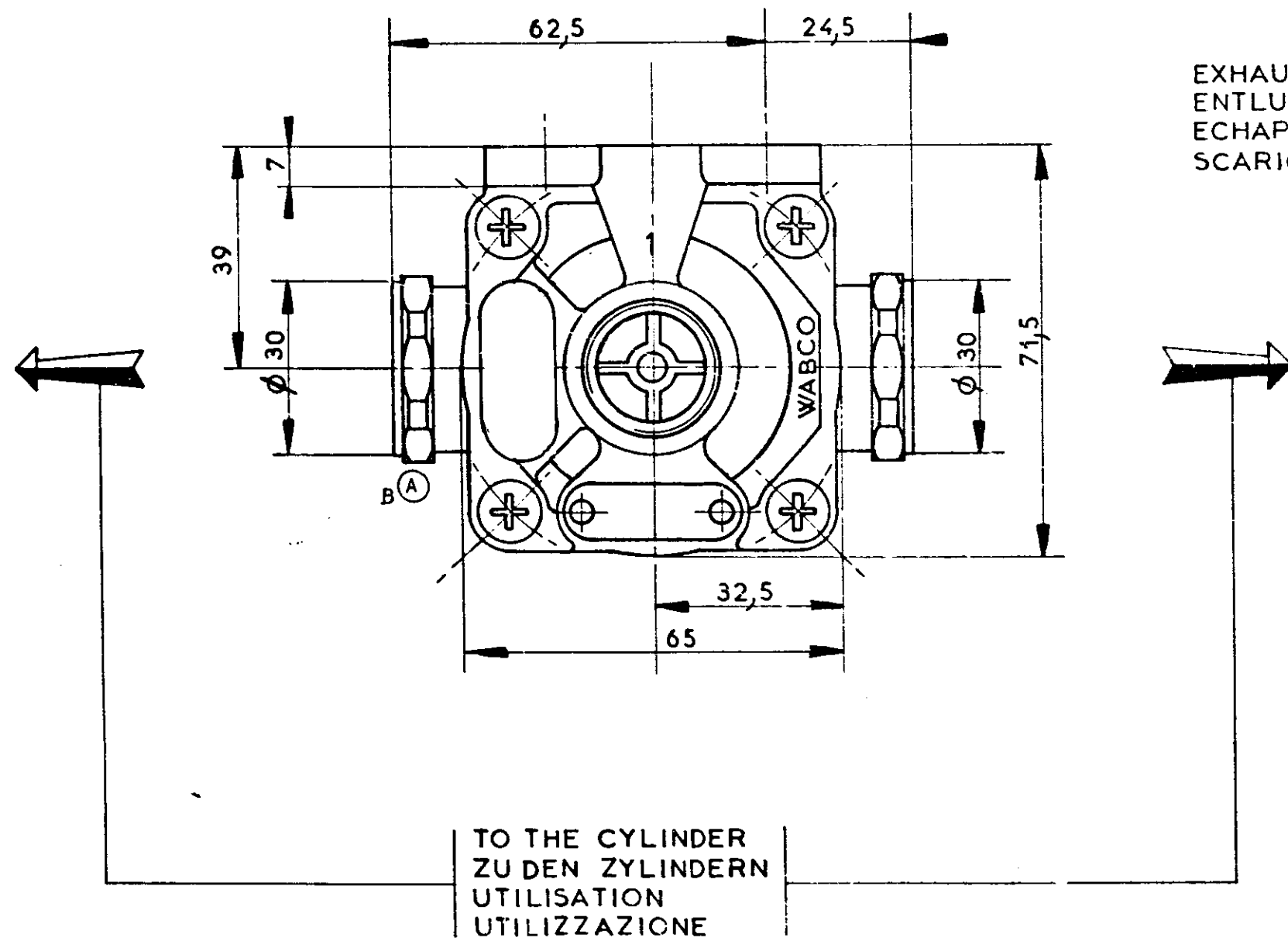


TIRAGE du :

INLET
VOM BREMSVENTIL
ALIMENTATION
ALIMENTAZIONE



EXHAUST
ENTLUEFTUNG
ECHAPPEMENT
SCARICO



TO THE CYLINDER
ZU DEN ZYLINDERN
UTILISATION
UTILIZZAZIONE

FUNCTION OF THE DEVICE ZWECK DES GERÄTES FONCTION DE L'APPAREIL FUNZIONE DELL'APPARECCHIO	QUICK RELEASE VALVE SCHNELL-LOESEVENTIL VALVE DE DESERRAGE RAPIDE VALVOLA DI SFRENTURA RAPIDO
MEDIUM MEDIUM FLUIDE FLUIDO	AIR LUFT AIR ARIA
MAX FREE PASSAGE MAX FREIER DURCHGANG PASSAGE LIBRE MAXI PASSAGIO LIBERO MASSIMO	∅ 14 mm = 154 mm ²
SERVICE PRESSURE BETRIEBSDRUCK PRESSION DE SERVICE PRESSIONE D'ESERCIZIO	MAXI : 10 bar
ADMISSIBLE TEMPERATURES THERM ANWENDBEREBICH TEMPERATURE DE SERVICE TEMPERATURA D'ESERCIZIO	- 40°C + 80°C

A®

81146 A	81422 T	GENERAL SPEC	ALLOGENE SPEC	SPEC GENERALES	SPEC GENERALI	BLANK NO. - RICHTZEICHEN NO. PECE BRUITE - NO. PEZZO GIUZZO
79052 A	79.05.28	TREATMENT - BEHANDLUNG TRATTEMENT - TRATTAMENTO	SURFACE PROTECTION - OBERFLACHENSCHUTZ PROTECTION - PROTEZIONE	MATERIAL - WERKSTOFF MATERIALE		
(N)	(M)	(L)	(K)	(J)	(H)	(G)
(F)	(E)	(D)	(C)	(B)	(A)	(Z)
DATE	SIGNATURE	WABCO				
79.05.28	Callé	QUICK RELEASE VALVE SCHNELL-LOESEVENTIL VALVOLA DI SFRENTURA RAPIDO VALVE DE DESERRAGE RAPIDE				
CHECKED	BION	DRAWING OF				
STANDARDIZATION	ty	DRAWING OF				
REPLACEMENT FOR	76.09.13	79.05.28	79.05.28	79.05.28	79.05.28	79.05.28
SIZE	A2	SIZE	A2	SIZE	A2	SIZE
1:1	210	1:1	210	1:1	210	1:1
CODE FOR FUNCTION	531	CODE FOR SHAPE	605	CODE FOR DOCUMENT	605	605
100 mm						