

WORKING PRESSURE
BETRIEBSDRUCK max. 20 bar
PRESSION D'UTILISATION
PRESSIONE DI ESERCIZIO

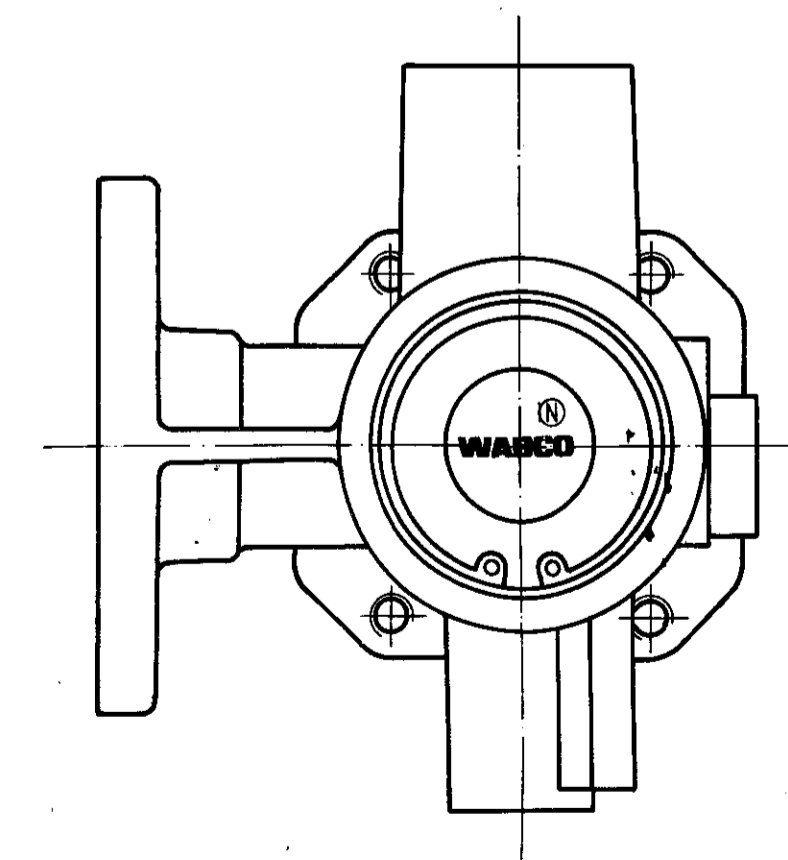
OUTLET PRESSURE
AUSGESTEUERTER DRUCK 7.0^{+0.3}₀ bar
PRESSION DE SORTIE AT A SUPPLY PRESSURE OF 10 bar (M)
PRESSIONE DI USCITA SOUS UNE PRESSION D'ALIMENTATION DE
PER UNA PRESSIONE D'ALIMENTAZIONE DI

RANGE OF ADJUSTMENT
EINSTELLBEREICH 6.0...9.0 bar (L)
ZONE DE REGLAGE
ZONA DI REGOLAZIONE

MEDIUM
MEDIUM AIR
FLUIDE LUFT
FLUIDO AIR
ARIA

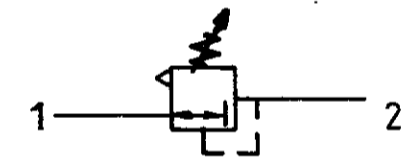
THERMAL RANGE OF APPLICATION
THERM. ANWENDUNGSBEREICH -40°C ... +80°C
GAMME D'APPLICATION THERMIQUE
CAMPO DI APPLICAZIONE TERMICA

INSTALLATION POSITION AS DRAWN
EINBAULAGE WIE GEZEICHNET
POSITION D'INSTALLATION SUIVANT DESSIN
POSIZIONE DI MONTAGGIO COME DISEGNATO



1=S= SUPPLY OF ENERGY
ENERGIEZUFLUSS
ALIMENTATION D'ENERGIE
ALIMENTAZIONE DI ENERGIA

2=Z= DELIVERY OF ENERGY
ENERGIEABFLUSS
UTILISATION D'ENERGIE
UTILIZZAZIONE DI ENERGIA



DATE		SIGNATURE		WABCO WESTINGHOUSE	
6	78-07-12	DRAWN	<i>[Signature]</i>	PRESSURE LIMITING VALVE	
8	78-07-12	CHECKED	<i>[Signature]</i>	VALVE DE LIMITATION DE PRESSION	
10	78-07-13	STANDARDIZATION	<i>[Signature]</i>	VALVOLA LIMITATRICE D. PRESSIONE	
11	39476	3x M	89-03-20	DRUCKBEGRENZUNGSVENTIL.	
12	27918	1x M	83-01-11	MASS	SCALE
13	19721	3x L	78-07-12	0.54	1:1
14				SIZE	T R I
15	ORIG. OF 76-06-03	16	A 2	140	17
18		19		CODE FOR FUNCTION	CODE FOR SHAPE
20		21		23	24
22		25		605	26

IDENTIFICATION CODE: 475 010 000 0

100 mm