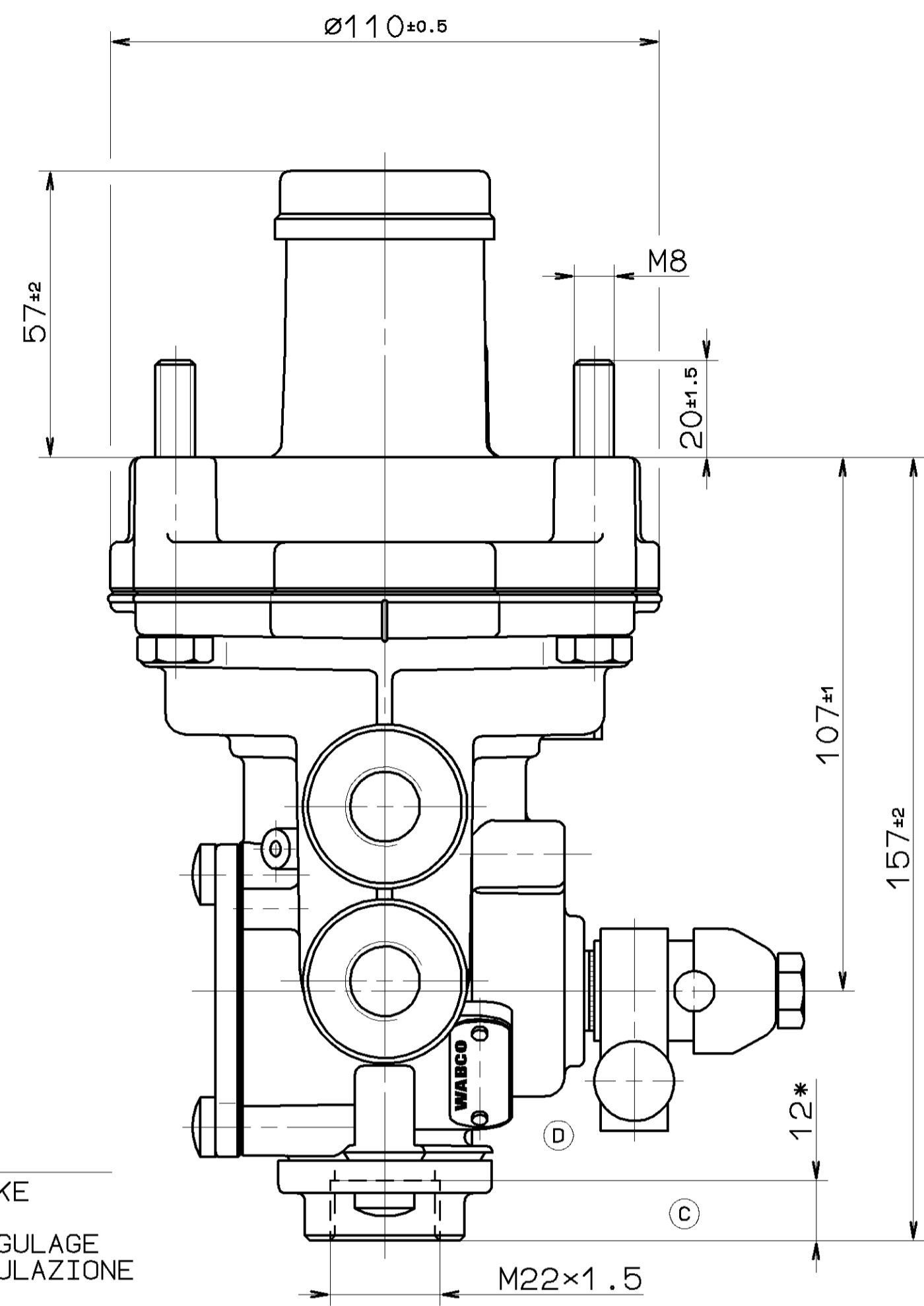
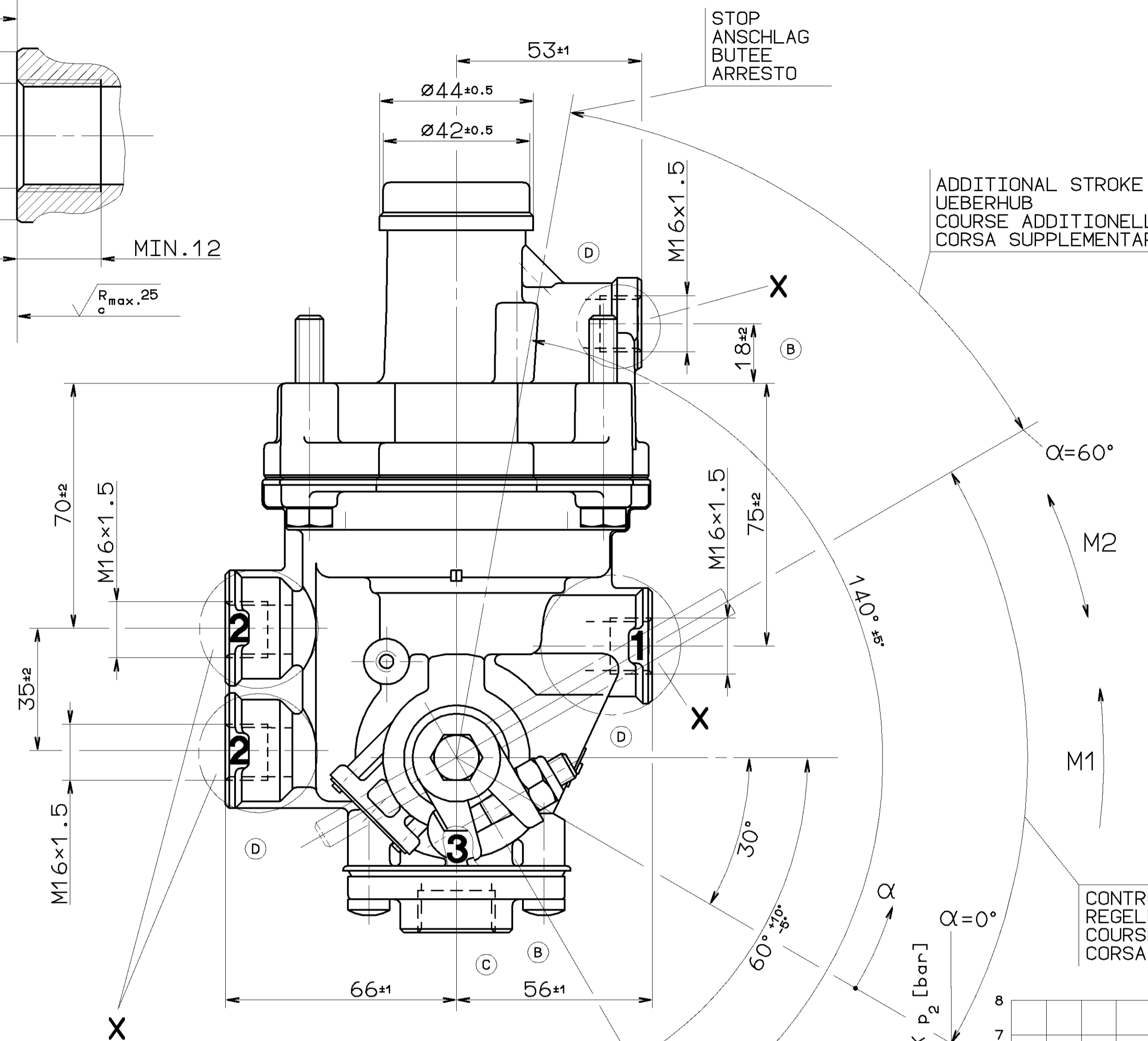
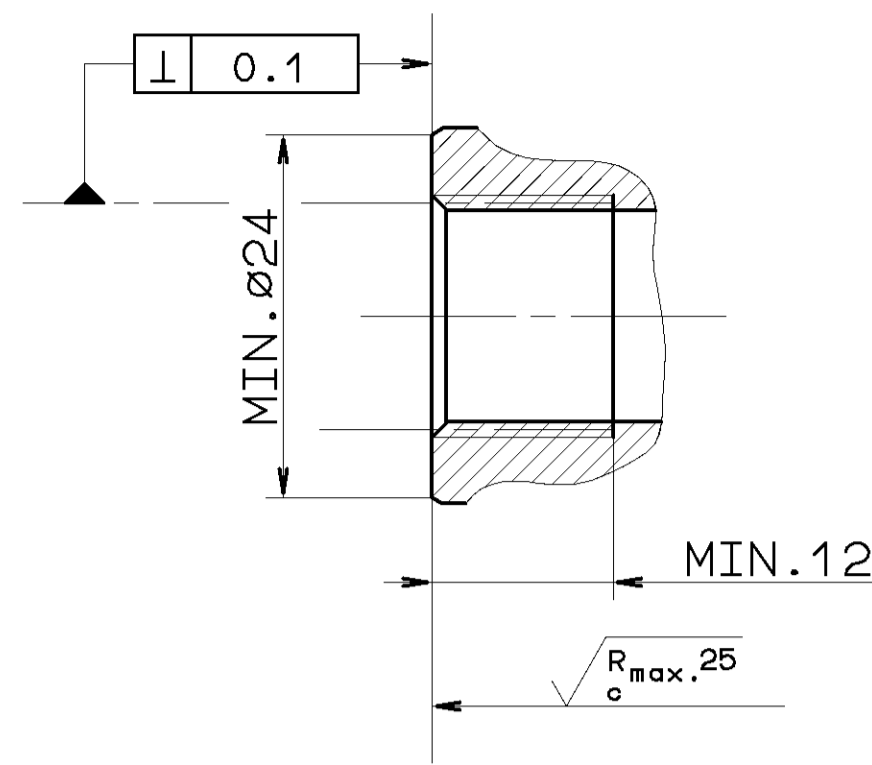
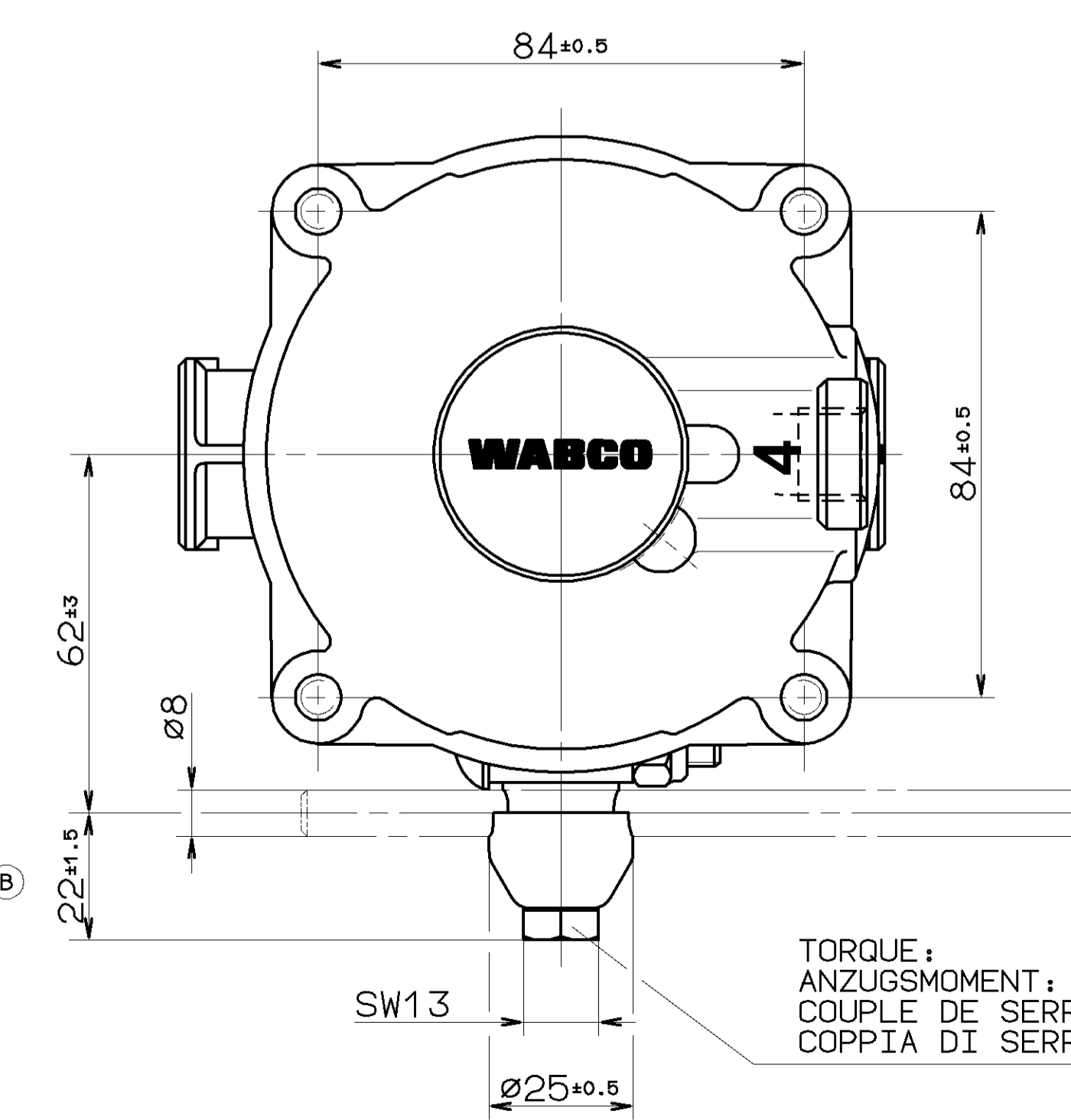


Ⓑ X 2:1



LIMITING STOP IN CASE OF ROD BREAKAGE
 ANSCHLAG BEI GESTÄNGEBRUCH
 BUTEE (LIMITANT) EN CAS DE RUPTURE DU TRINGLAGE
 POSIZIONE D'ARRESTO IN CASO DI ROTTURA DELL'ASTA

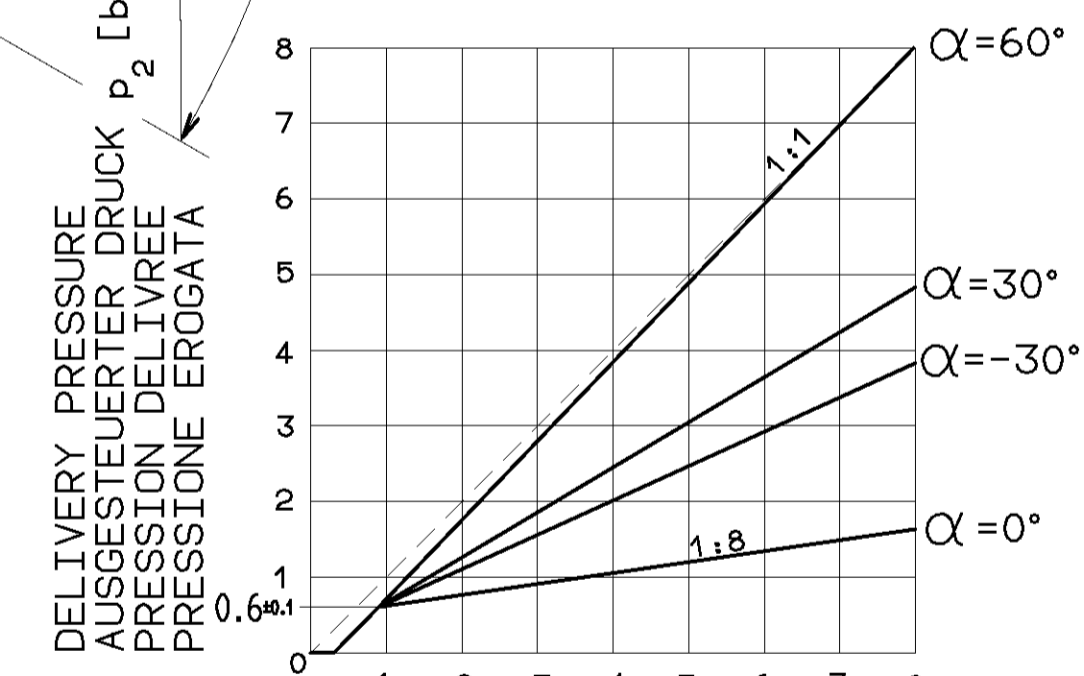


TORQUE:
 ANZUGSMOMENT: M=20 Nm
 COUPLE DE SERRAGE:
 COPPIA DI SERRAGGIO:

STOP
 ANSCHLAG
 BUTEE
 ARRESTO

ADDITIONAL STROKE
 UEBERHUB
 COURSE ADDITIONELLE
 CORSA SUPPLEMENTARE

CONTROL STROKE
 REGELHUB
 COURSE DE REGULATION
 CORSA DI REGOLAZIONE



CONTROL PRESSURE
 STEUERDRUCK
 PRESSION DE COMMANDE
 PRESSIONE DI COMANDO

WORKING PRESSURE:
 BETRIEBSDRUCK: MAX. p_e 10bar
 PRESSION DE SERVICE:
 PRESSIONE D'ESERCIZIO:

THERMAL RANGE OF APPLICATION:
 THERMISCHER ANWENDUNGSBEREICH: -40°...+80° C
 GAMME D'APPLICATION THERMIQUE:
 CAMPO DI APPLICAZIONE TERMICA:

MEDIUM: AIR
 MEDIUM: LUFT
 FLUIDO: AIR
 FLUIDO: ARIA

1 = SUPPLY
 VORRAT
 ALIMENTATION
 ALIMENTAZIONE

2 = DELIVERY PRESSURE
 AUSGESTEUERTER DRUCK
 PRESSION DELIVREE
 PRESSIONE EROGATA

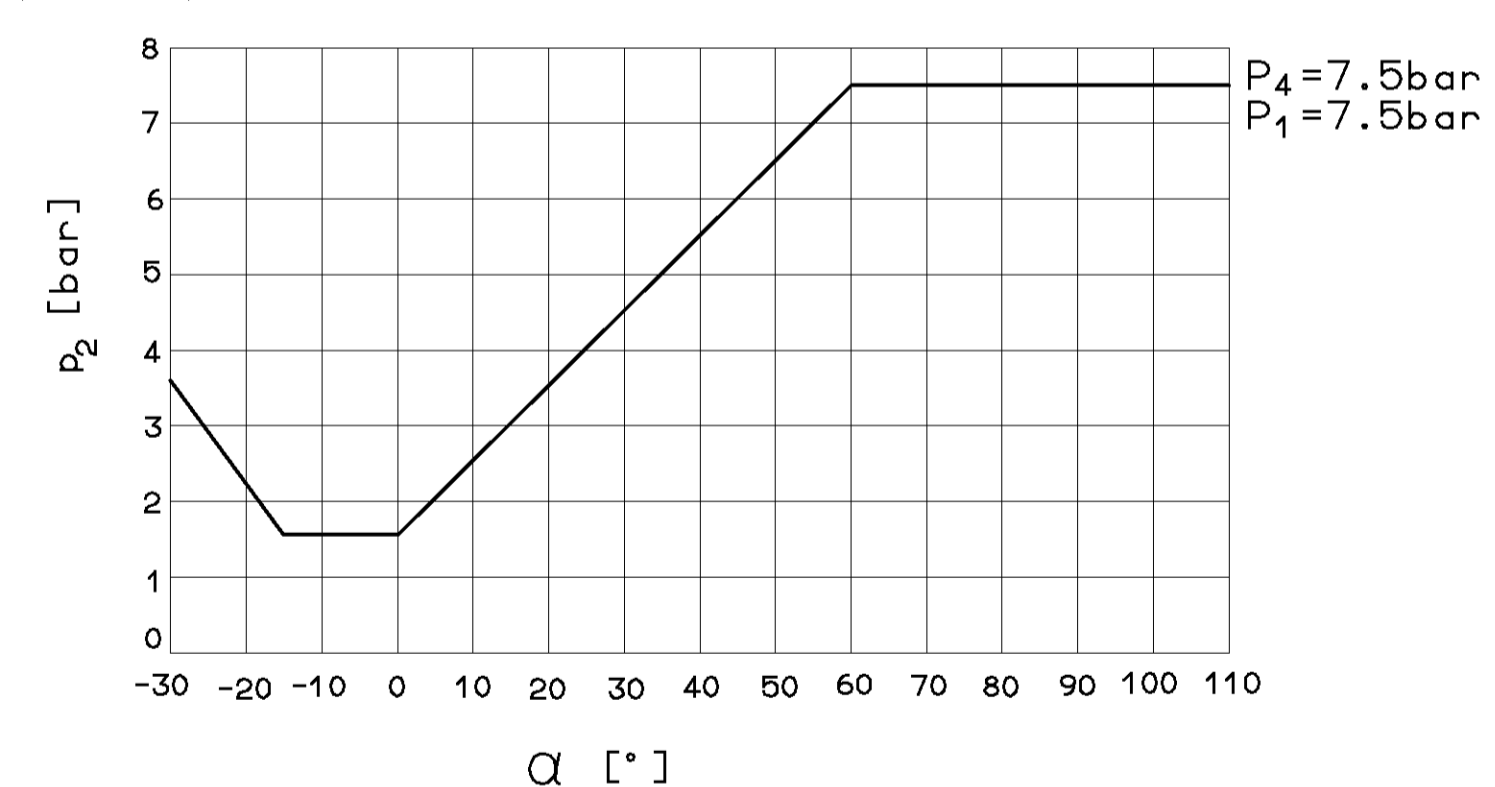
3 = EXHAUST
 ENTLUEFTUNG
 ECHAPPEMENT
 SCARICO

4 = CONTROL PRESSURE
 STEUERDRUCK
 PRESSION DE COMMANDE
 PRESSIONE DI COMANDO

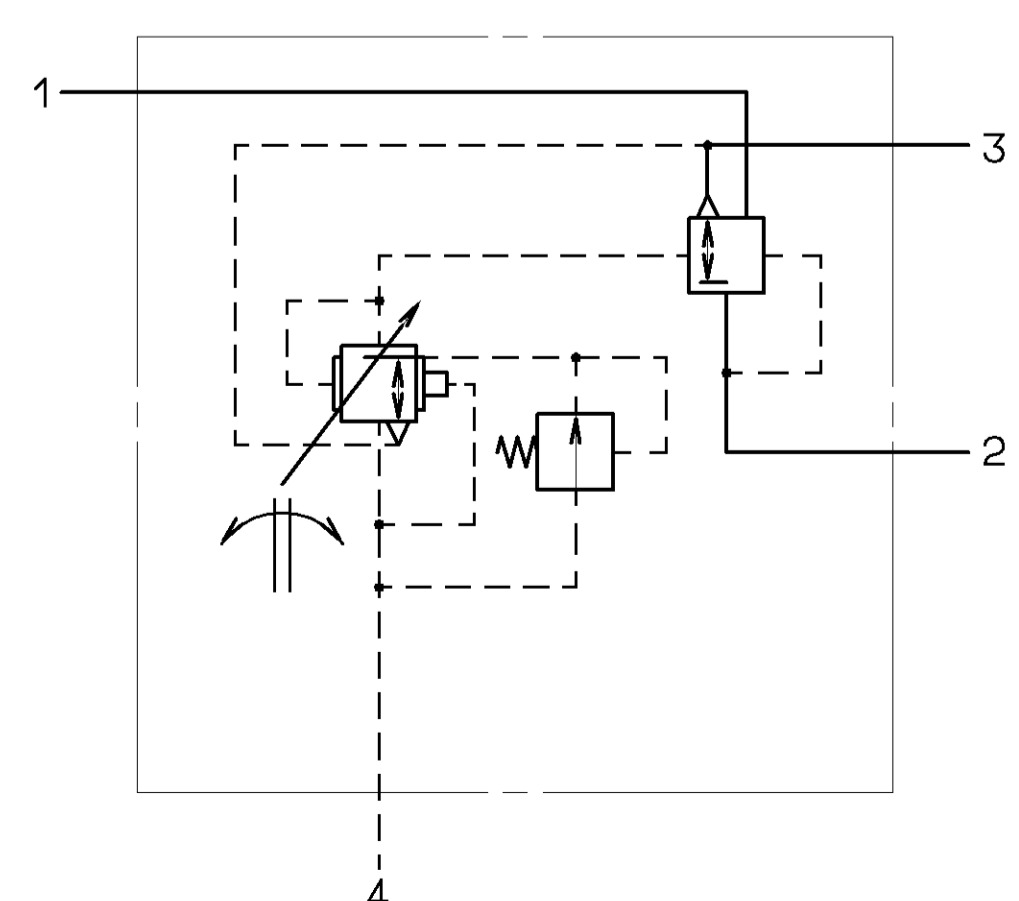
INSTALLATION POSITION AS DRAWN
 EINBAULAGE WIE GEZEICHNET
 POSITION D'INSTALLATION SUIVANT DESSIN
 POSIZIONE DI MONTAGGIO COME DISEGNATO

M1 = NECESSARY DISPLACING MOMENT:
 ERFORDERLICHES VERSTELLMOMENT: 1.4 Nm (p₄=7.5bar)
 COUPLE NECESSAIRE AU MOUVEMENT:
 COPPIA DI REGOLAZIONE NECESSARIA:

M2 = ADMISSIBLE DISPLACING MOMENT:
 ZULAESSIGES VERSTELLMOMENT: 20 Nm
 ADMISSIBLE MAXI AU MOUVEMENT:
 COPPIA DI REGOLAZIONE AMMESSA:



* MAX. DEPTH OF ENGAGEMENT
 MAX. EINSCHRAUBTIEFE
 PROFONDEUR MAX DE SERRAGE
 PROFONDITA MAX DI SERRAGGIO



GENERAL SPECIFICATION: JED-034		CADAM-DRAWING COPYRIGHT		WABCO	
FURTHER TECHNICAL DATA:		DATE: _____ SIGNATURE: _____		DRAWN: HAUKE	
DOC. CODE: _____ SHEET: _____ TO: _____		CHECKED: FAUCK DEI.		STANDARDIZATION: PANTZER	
GENERAL TOLERANCES		RANGE OF NOMINAL DIMENSIONS (± mm)		PRODUCT IDENTIFICATION NO.	
CLASS	1)	≤50	≤180	≤400	>400
FINE	×	0,5	1,0	1,5	2,0
MEDIUM	×	1,0	2,0	3,0	4,0
COARSE	×	2,0	3,5	5,0	6,5
TAPPED HOLES ACC. ISO 4039 / JED-162		037719 4×D 87-12-03		037703 3×C 87-10-21	
1) TOLERANCE CLASS APPLIED CROSSMARKED		034978 6×B 86-12-01		REPLACEMENT FOR 475 710 007 0	
DCN-NO.	REV.	DATE	A 1	140	592
SHAPE CODE		742		900	

TOUTE REPRODUCTION DE CE DOCUMENT, TOUTE ESCAMOTATION OU COMMUNICATION DE SON CONTENU, EST INTERDITE SANS LAutorisation écrite de WABCO. Toute utilisation non autorisée de ce document est formellement interdite. Toute réimpression ou utilisation non autorisée sans la permission écrite de WABCO est formellement interdite. Toute réimpression ou utilisation non autorisée sans la permission écrite de WABCO est formellement interdite. Toute réimpression ou utilisation non autorisée sans la permission écrite de WABCO est formellement interdite.