

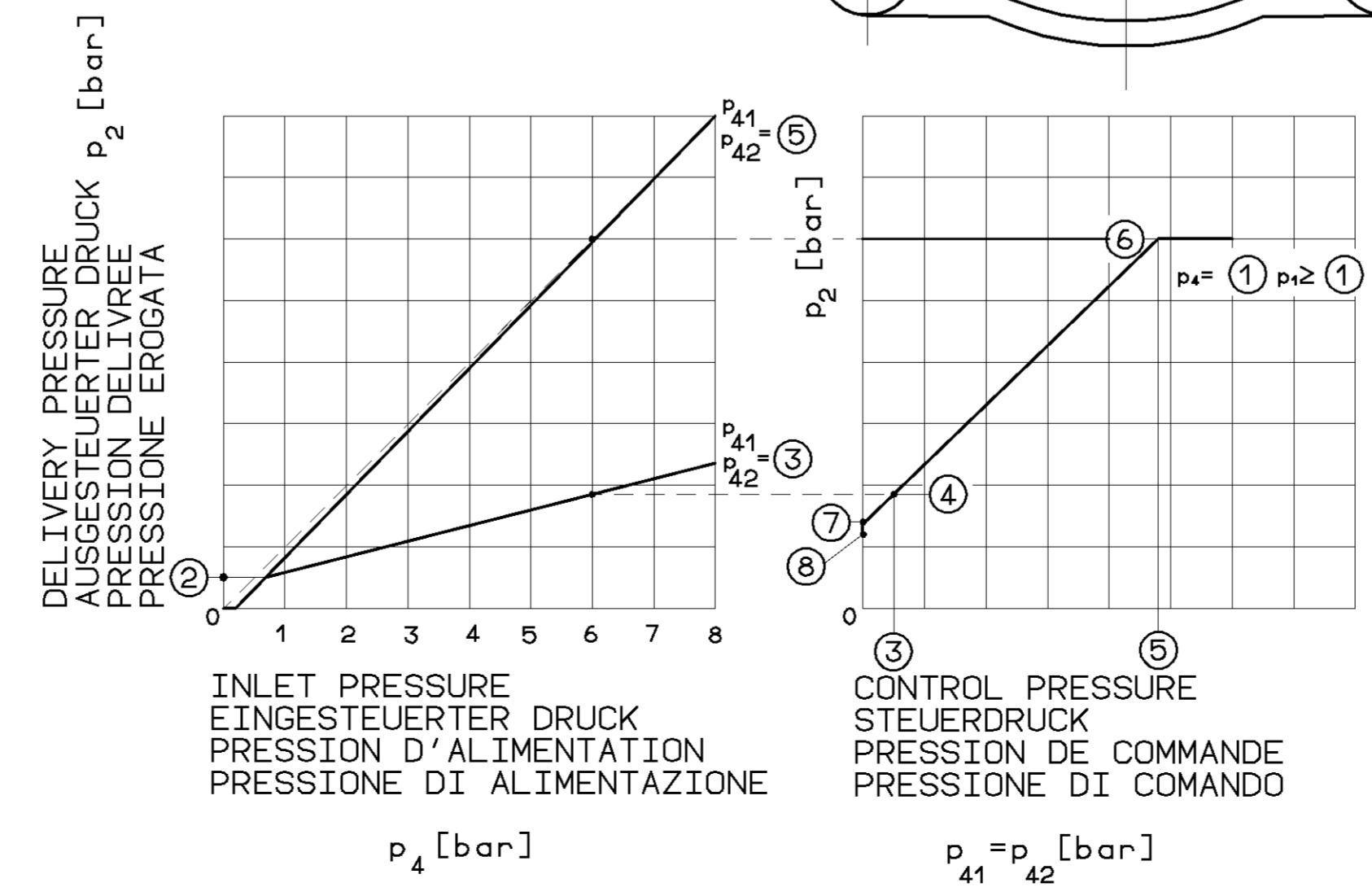
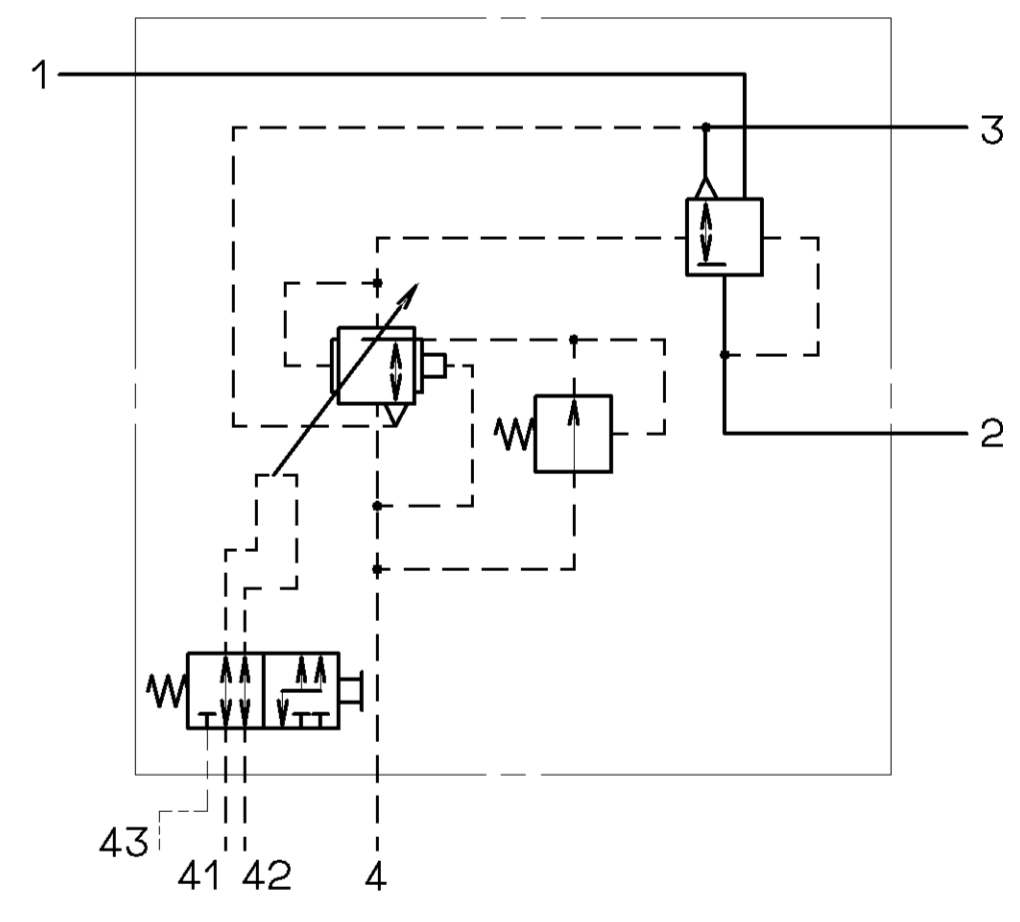
THERMAL RANGE OF APPLICATION:
 THERMISCHER ANWENDUNGSBEREICH: -40° ... +80° C
 GAMME D'APPLICATION THERMIQUE: -40° ... +80° C
 CAMPO DI APPLICAZIONE TERMICA:

MEDIUM: AIR
 MEDIUM: LUFT
 FLUIDE: AIR
 FLUIDO: ARIA

- 1 = SUPPLY VORRAT ALIMENTATION ALIMENTAZIONE MAX. p_e 13bar
- 2 = DELIVERY PRESSURE AUSGESTEUERTER DRUCK PRESSION DELIVREE PRESSIONE EROGATA
- 3 = EXHAUST ENTLUEFTUNG ECHAPPEMENT SCARICO
- 4 = INLET PRESSURE EINGESTEUERTER DRUCK PRESSION D'ALIMENTATION PRESSIONE DI ALIMENTAZIONE MAX. p_e 10bar
- 41 = CONTROL PRESSURE STEUERDRUCK PRESSION DE COMMANDE MAX. p_e 13bar
- 42 = PRESSIONE DI COMANDO
- 43 = TEST CONNECTION PRUEFANSCHLUSS RACCORD D'EPREUVE RACCORDO DI PROVA MAX. p_e 13bar

INSTALLATION POSITION AS DRAWN
 EINBAULAGE WIE GEZEICHNET
 POSITION D'INSTALLATION SUIVANT DESSIN
 POSIZIONE DI MONTAGGIO COME DISEGNATO

TORQUE FOR CONNECTIONS:
 ANZUGSMOMENT FUER EINSCHRAUBSTUTZEN: M16x1.5: M_{max.} = 34 Nm
 COUPLE DE SERRAGE DES RACCORDS: M22x1.5: M_{max.} = 53 Nm
 COPPIA DI SERRAGGIO DEI RACCORDI:



475 711 071 0	6	0.5	0.5	1.85	4.8	6	1.4...1.2	1.2	
475 711 069 0	6	0.5	0.8	1.7	8	6	1.2	1.2	
475 711 068 0	6	0.5	0.5	1.4	5.9	6	1.2	1.2	
WABCO	CUSTOMER'S NO. KUNDEN-NR. NO. CLIENT NO. CLIENTE	① p ₁ [bar]	② p ₂ [bar]	③ p ₄₁ [bar]	④ p ₄₂ [bar]	⑤ p ₄₁ [bar]	⑥ p ₄₂ [bar]	⑦ p ₂ (p ₄₁ /p ₄₂ =0 bar)	⑧ p ₂ [bar]
IDENTIFICATION		±0.1		Empty Position Leerstellung Vide Position Vuot Posistzone	Load Position Vollaststellung Charge Position Carico Posistzone				

GENERAL SPECIFICATION: JED-334	
FURTHER TECHNICAL DATA:	
DOC. CODE:	SHEET: TO
GENERAL TOLERANCES	
RANGE OF NOMINAL DIMENSIONS (± mm)	
CLASS	1) ≤50 >50 ≤180 >180 ≤400 >400
FINE	0,5 1,0 1,5 2,0
MEDIUM	1,0 2,0 3,0 4,0
COARSE	2,0 3,5 5,0 6,5
TAPPED HOLES ACC. ISO-4017/JED-108 JED-388	
1) TOLERANCE CLASS APPLIED CROSSHARDED	
DN-Nº.	REV.
DATE	

CAD-DRAWING COPYRIGHT		WABCO	
DATE	SIGNATURE	93-03-15	BRINK
DRAWN	CHECKED	AUTOM. LOAD-SENSING VALVE AUTOM. BREMSKRAFTREGLER CORRECTEUR DE FREINAGE AUTOM. REGOLATORE DI FRENATURA AUTOM.	
STANDARDIZATION:		PRODUCT IDENTIFICATION NO.	
MASS	SCALE	475 711 104 0	
2.1 kg	1:1 (2:1)	DOC. CODE	SHEET
SIZE	T.R.T.	653	1/1
A 1	140	SHAPE CODE	REPLACEMENT FOR
EXP. CODE 7142		PRODUCT TYPE 000	