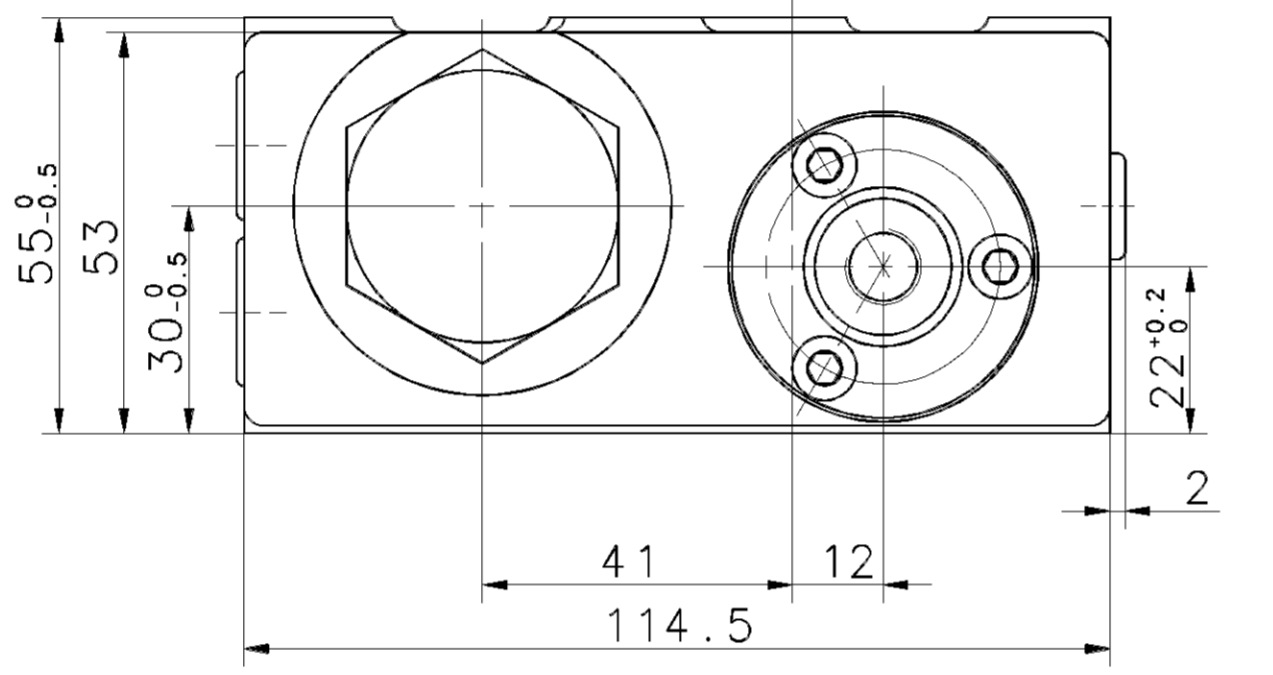
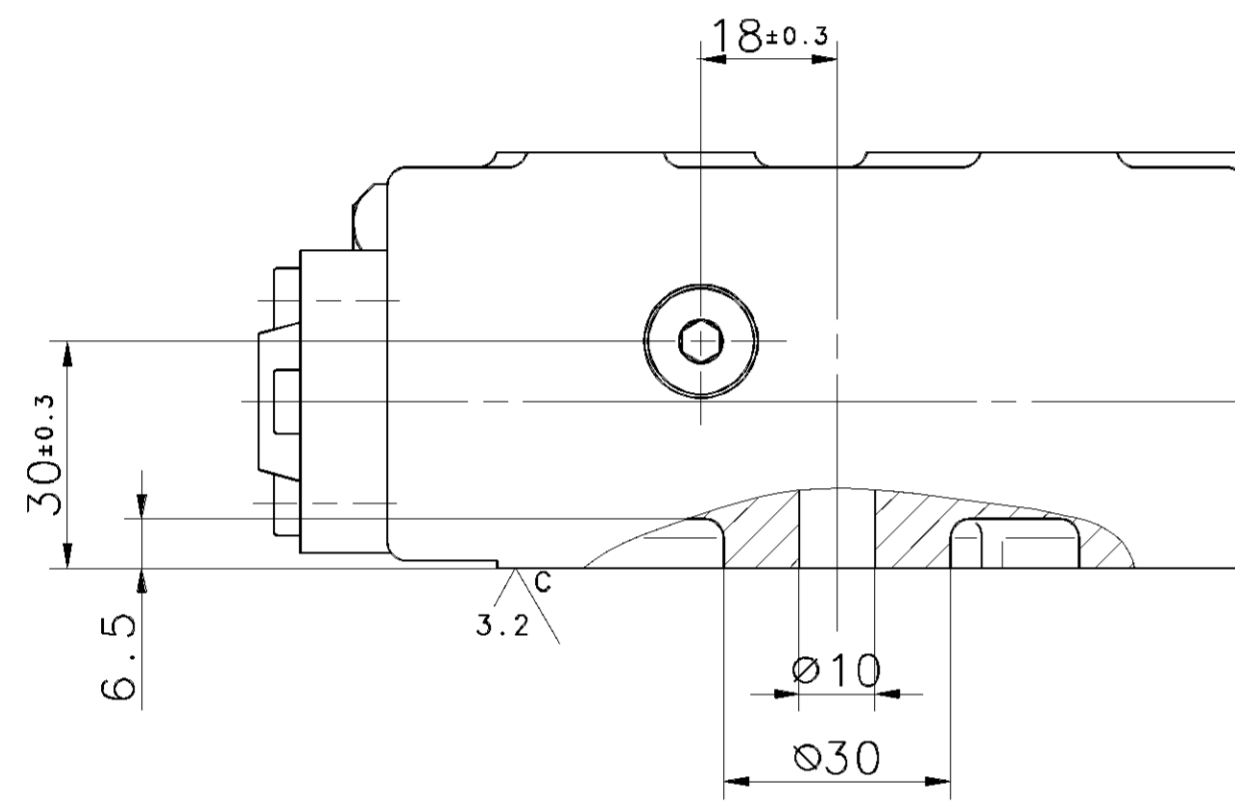


THE CHARACTERISTIC CURVE APPLIES TO:
 KURVE GÜELTIG FUER:
 LA COURBE CARACTERISTIQUE S'APPLIQUE:
 LA CURVA CARATTERISTICA E VALIDA PER:

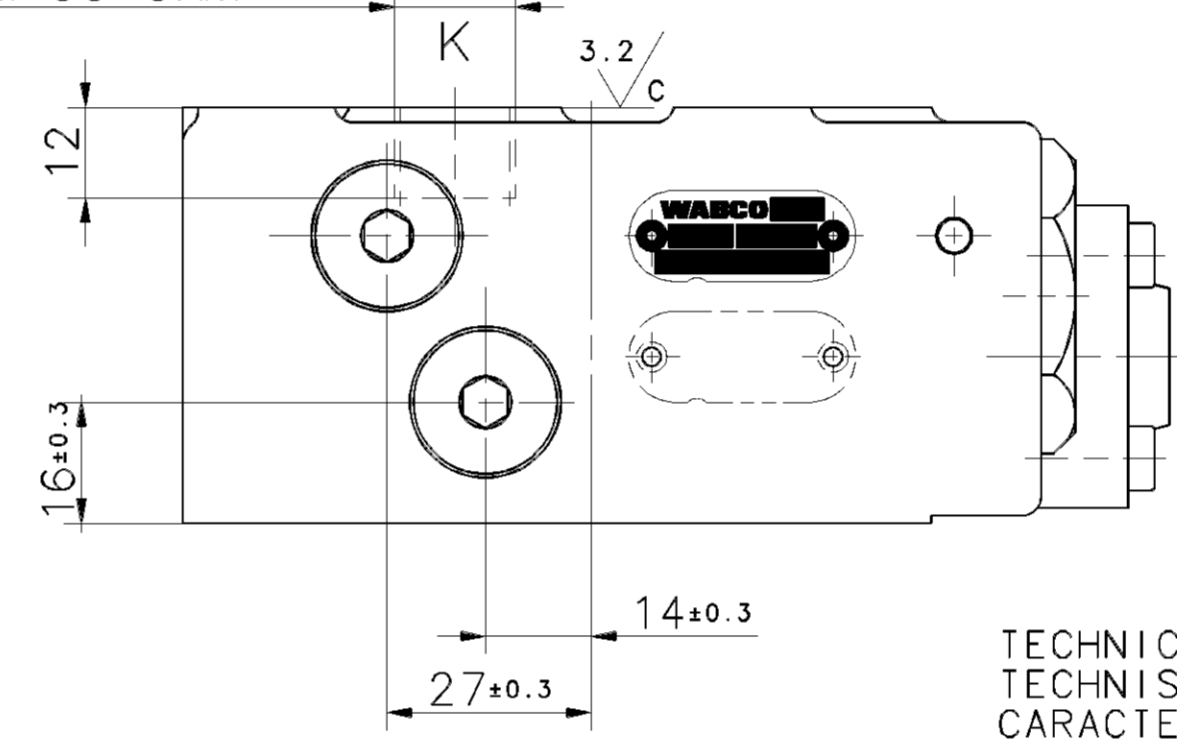
Q=12 dm³/min
 T_{oil} = +60°C UP TO +120°C
 T_{oel} = +60°C BIS +120°C
 T_{huile} = +60°C A +120°C
 T_{olio} = +60°C A +120°C

PRESSURE AT PORT S:
 DRUCK AM ANSCHLUSS S: 1.5 bar
 PRESSION A L'ORIFICE S:
 PRESSIONE ALL'ORIFIZIO S:

DELIVERED PRESSURE
 AUSGESTEUERTER DRUCK
 PRESSION DELIVREE
 PRESSIONE EROGATA



M16x1.5
 M=35±5Nm



TECHNICAL DATA
 TECHNISCHE DATEN
 CARACTERISTIQUES TECHNIQUES
 CARATTERISTICHE TECNICHE

WORKING MEDIUM: MINERAL OIL, 10 UP TO 2000mm²/s
 BETRIEBSMEDIUM: MINERALOEL, 2000 BIS 10 mm²/s
 FLUIDE: HUILE MINERALE, 2000 A 10mm²/s
 FLUIDO DI ESERCIZIO: OLIO MINERALE, 2000 A 10mm²/s

WORKING PRESSURE:
 BETRIEBSDRUCK: MAX. 16 bar
 PRESSION D'UTILISATION:
 PRESSIONE DI ESERCIZIO

CONTROL MEDIUM: AIR
 STEUERMEDIUM: LUFT
 FLUIDE DE COMMANDE: AIR
 FLUIDO DI COMANDO: ARIA

RANGE OF CONTROL PRESSURE: 4.5 UP TO 8.3 bar
 STEUERDRUCKBEREICH: 4.5 BIS 8.3 bar
 GAMME DE LA PRESSION DE COMMANDE: 4.5 A 8.3 bar
 CAMPO DELLA PRESSIONE DI COMANDO: 4.5 A 8.3 bar

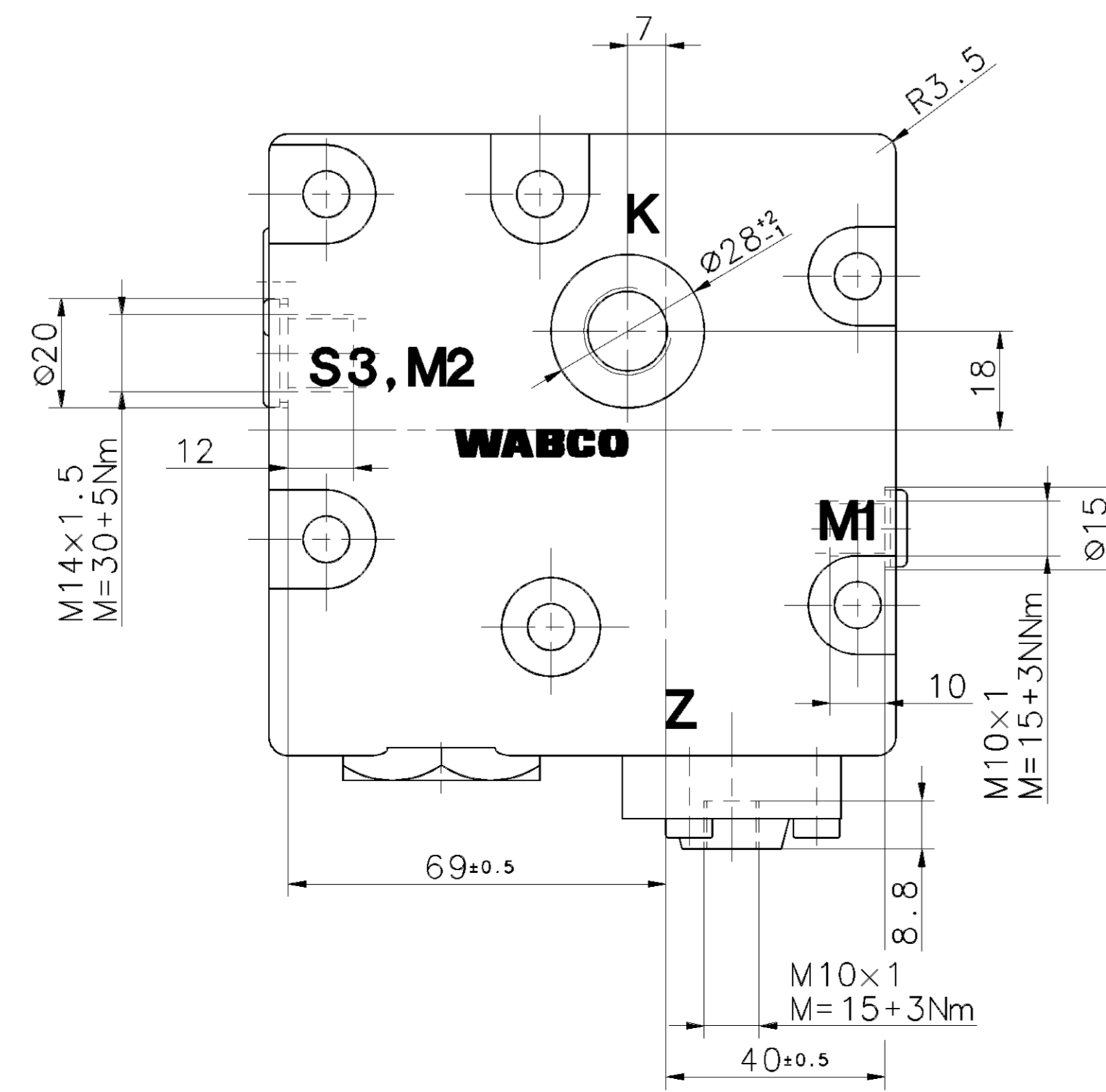
TEMPERATURE OF MEDIUM: -25°C UP TO +150°C
 DRUCKMITTELTEMPERATUR: -25°C BIS +150°C
 TEMPERATURE DE FLUIDE: -25°C A +150°C
 TEMPERATURA DEL FLUIDO: -25°C A +150°C

POSITION OF INSTALLATION: FLANGE UNDER
 EINBAULAGE: FLANSCH UNTEN
 POSITION D'INSTALLATION: FLASQUE EN BAS
 POSIZIONE DI MONTAGGIO: FLANGIA IN BASO

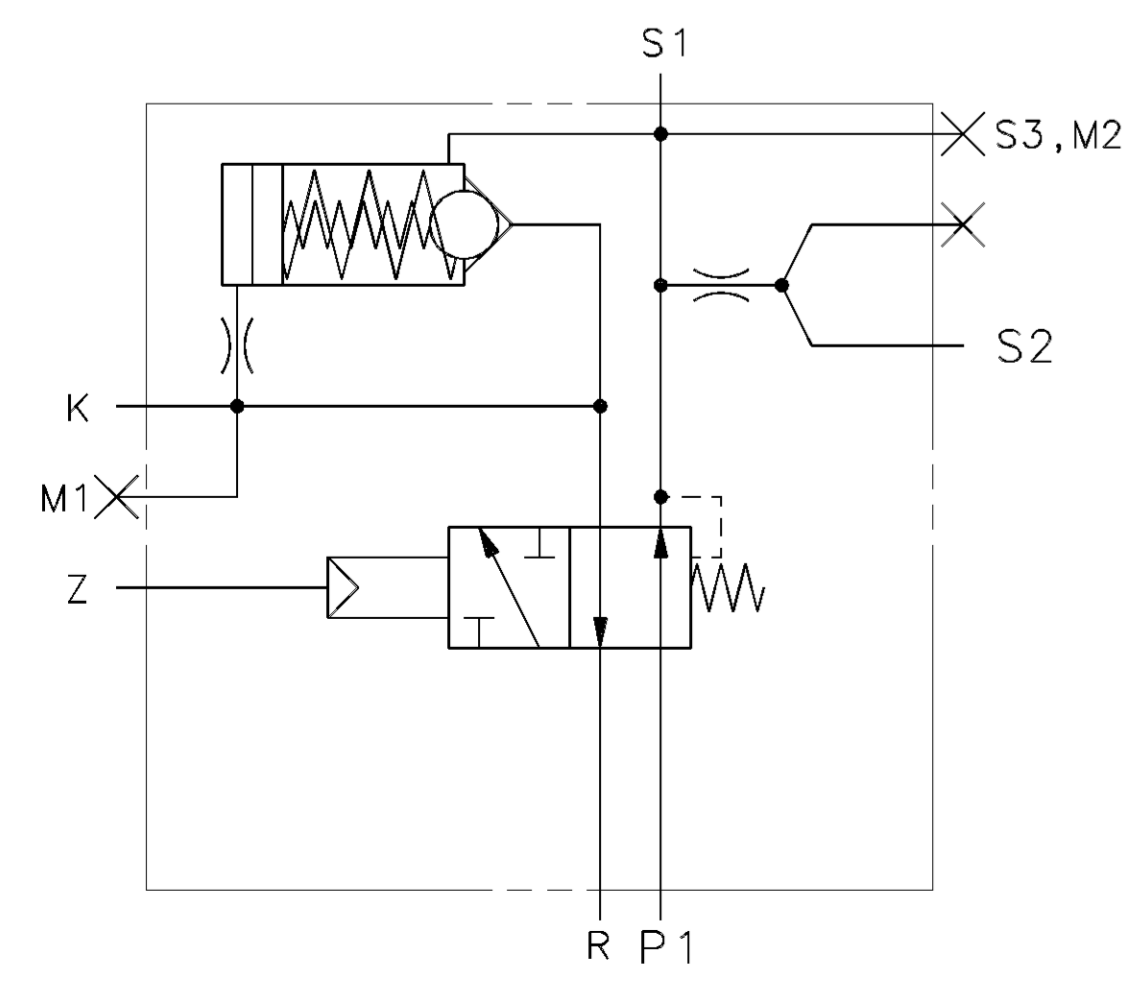
PAINTING: BLACK SYNTHETIC RESIN VARNISH RAL 9005
 PORTS AND HOLES FREE OF PAINT; DBL 7391
 FARBANSTRICH: KUNSTHARZLACK-DECKLACK SCHWARZ RAL 9005
 ANSCHLUESSE UND BOHRUNGEN FARBFREI; DBL 7391
 PEINTURE: VERNIS SYNTHETIQUE NOIR RAL 9005
 ORIFICES ET TROUS SANS PEINTURE; DBL 7391
 VERNICIATURA: VERNICE SINTETICA NERA RAL 9005
 ORIFIZI E FORI SENZA VERNICE; DBL 7391

FLOW RATE: MIN 5 dm³/min, MAX 30 dm³/min
 DURCHFLOUSSMENGE:
 DEBIT:
 FORTATA:

TORQUE FOR MOUNTING STUDS
 ANZUGSMOMENTE FUER BEFESTIGUNGSSCHRAUBEN: 20± Nm
 COUPLE DE SERRAGE POUR GOWONS:
 COPPIA DI SERRAGGIO PER VITI PRIGIONERE:



WIRING DIAGRAM
 SCHALTSCHEMA
 SCHEMA DE CONNEXIONS
 SCHEMA DI COLLEGAMENTO



GENERAL SPECIFICATION:		JED-334	
FURTHER TECHNICAL DATA:			
DOC. CODE:	SHEET:	10	
GENERAL TOLERANCES			
RANGE OF NOMINAL DIMENSIONS (± mm)			
CLASS	1)	≤50	50-180
		180-400	>400
FINE		0,5	1,0
MEDIUM		1,0	2,0
COARSE		2,0	3,5
TAPPED HOLES ACC. ISO 4039 / JED-152			
1) TOLERANCE CLASS APPLIED CROSSMARKED			

CADAM-DESIGNING COPYRIGHT		DATE		SIGNATURE			
DRAWN:		02-05-28 HEINRICH		CHECKED:			
STANDARDIZATION:							
MASS	SCALE	PRODUCT IDENTIFICATION NO.				DOC. CODE	SHEET
5 kg	1:1	476 406 007 0				605	1/1
SIZE	T.R.T.			SHAPE CODE	REPLACEMENT FOR		
A 1	141				884 015 743 0		

TOUTE REPRODUCTION DE CE DOCUMENT, TOUTE EXPLOITATION OU COMMUNICATION DE SON CONTENU, SANS LAutorisation de la WABCO, est formellement interdite. Toute violation de cette interdiction sera poursuivie devant les tribunaux. Toute communication de ce document à un tiers, même si elle est faite sous réserve de confidentialité, est formellement interdite. Toute utilisation non autorisée de ce document est formellement interdite.

1099/016/2/04_93
 800/653